

O.D.O.T. DISTRICT 2 SURVEY OFFICE (USE ONLY)

PERSONNEL

REFERENCE NO. 12 G

SHEET 2 OF 63

NOTES RHOADES DATE 11/4/20
 H.C. O'DONNELL WEATHER FAIR
 R.C. RHOADES TEMP. 40°

ROUTE SR 65
 COUNTY WOOD
 TOWNSHIP WASHINGTON
 SECTION 35
 T 6 N R 9 E

DWG BY RHOADES PID 95796

TYPE MONUMENT 1/2" IPIPE

ON SURFACE - ~~BELOW~~ ON

OFFSET ☉ PAVEMENT 19.2' LT : ~~RT~~

8.1' LT TO LT EDGE PAVEMENT

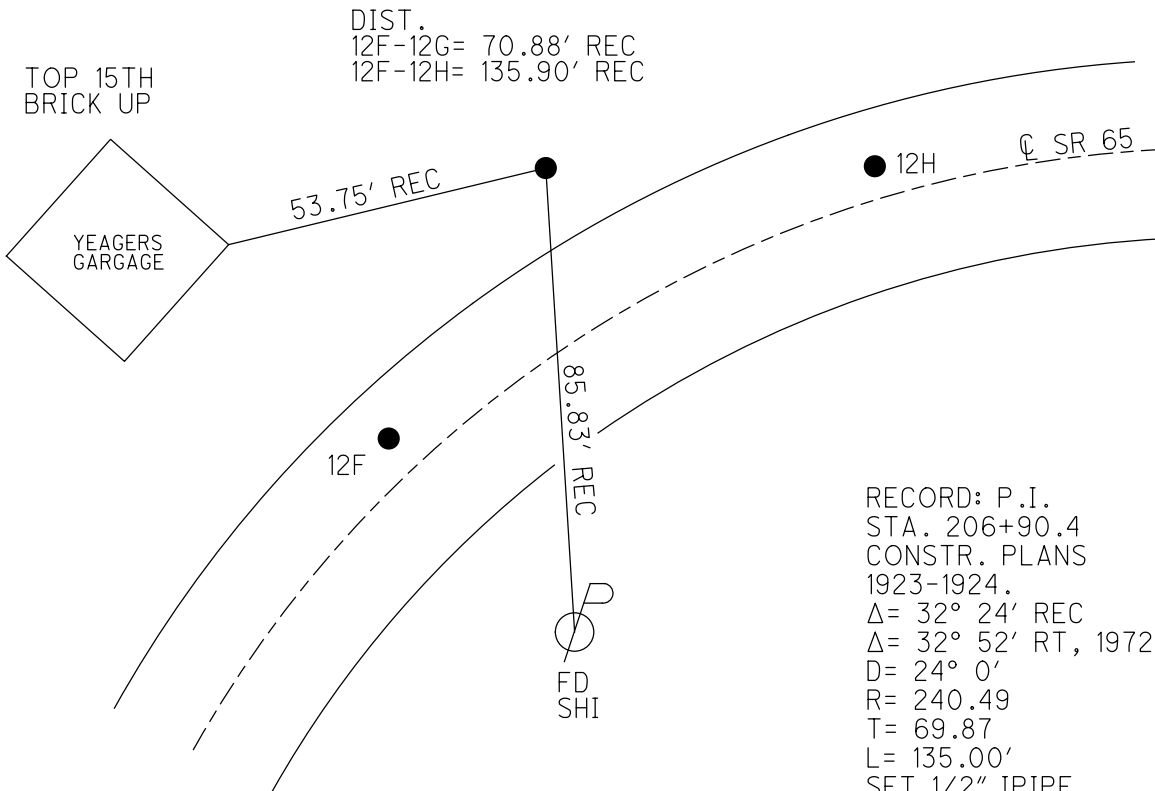
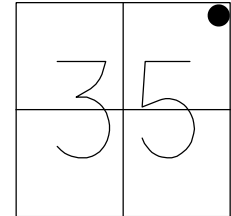
STATION: 307+42.27

HORIZ. DATUM: NAD83 2011

GEOID: NAVD88 2018

GRID: NORTHING: -

EASTING: -



RECORD: P.I.
 STA. 206+90.4
 CONSTR. PLANS
 1923-1924.
 $\Delta = 32^\circ 24'$ REC
 $\Delta = 32^\circ 52'$ RT, 1972
 D= 24° 0'
 R= 240.49
 T= 69.87
 L= 135.00'
 SET 1/2" IPIPE
 2/2/1972, BURNSIDE
 FD 1/2" IPIPE
 12/14/81, HOFFMAN
 D.N.F. POINT
 8/30/90, 4/17/92,
 9/16/04, 8/5/13,
 11/4/20, JFO

O.D.O.T. DISTRICT 2 SURVEY OFFICE (USE ONLY)

PERSONNEL

REFERENCE NO. 12 G

SHEET 2 OF 63

NOTES HOFFMAN

DATE 12/14/81

ROUTE SR 65

H.C. HOUSEHOLDER

WEATHER PTLY CLEAR

COUNTY WOOD

R.C. _____

TEMP. 34°

TOWNSHIP WASHINGTON

SECTION 35

T 6 N R 9 E

TYPE MONUMENT 1/2" IPIPE

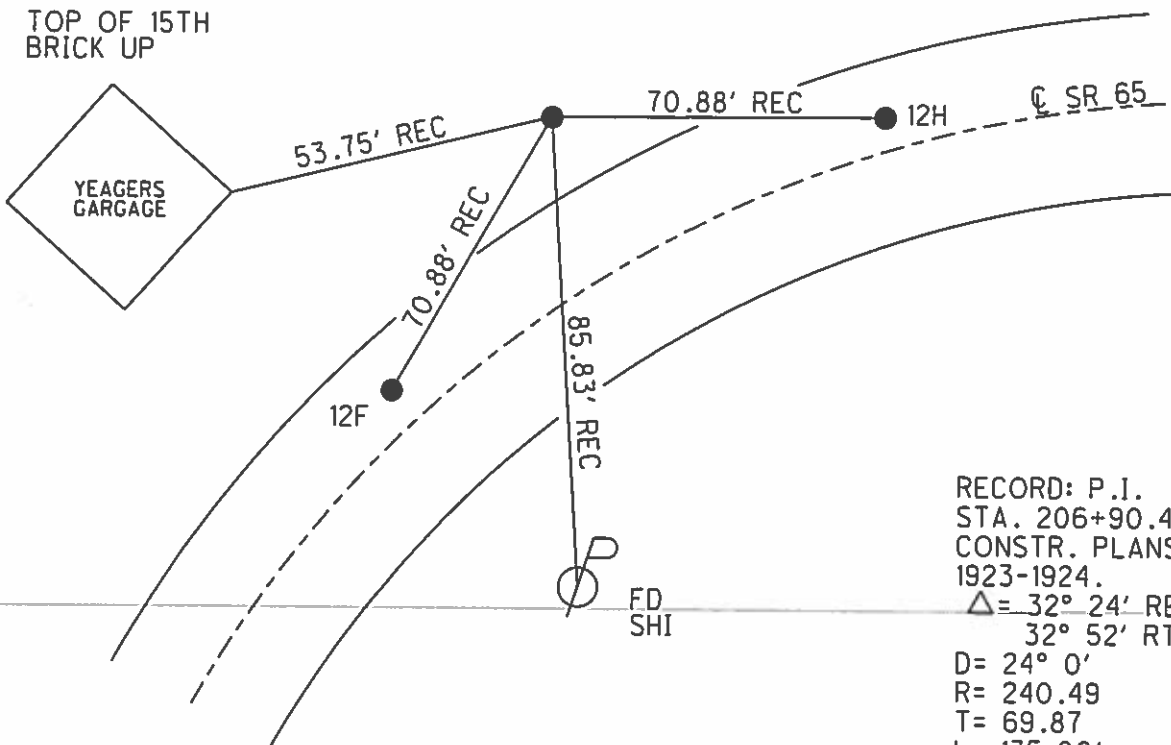
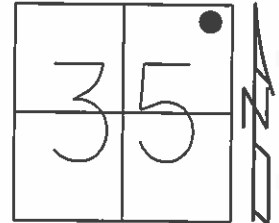
ON SURFACE - ~~BELOW~~ _____ ON _____

LEFT - PAV'T - ~~RIGHT~~ 19.2'

8.1' N TO N EDGE PAVEMENT

S.L.M. (1981 PROJECT) 307+54

Grid: Northing: _____ Easting: _____



RECORD: P.I.
 STA. 206+90.4
 CONSTR. PLANS
 1923-1924.
 $\Delta = 32^\circ 24' \text{ REC}$
 $32^\circ 52' \text{ RT, 1972}$

D = 24° 0'
 R = 240.49
 T = 69.87
 L = 135.00'

SET 1/2" IPIPE
 2/2/1972, BURNSIDE

D.N.F. POINT
 8/30/90, 4/17/92,
 9/16/04, 8/5/13
 NEED TO RESET
 WITH EXISTING TIES.

O.D.O.T. DISTRICT 2 SURVEY OFFICE

PERSONNEL

REFERENCE NO. 12 F

SHEET 33 OF 34

NOTES BARNHISEL

H.C. CURTIS

DATE 4-17-92

ROUTE 65

R.C. VAN DUSEN

WEATHER RAIN

COUNTY WOOD

Loehrke

TEMP. +50°

TOWNSHIP WASHINGTON

Rometo

SECTION 35

Set P.K's
WASHERS
5-1-92
C.L.

T 6 N R 9 E

TYPE MONUMENT AT "B" PT. "C"

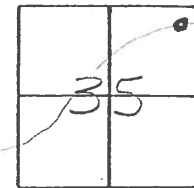
ON SURFACE - ~~BELOW~~ P.K. WASHER / SHANK

LEFT - ~~E~~ PAV'T. - ~~RIGHT~~ 4.7 / 4.6

^{BOTH} 4.6 TO LT EDGE PAVEMENT

S.L.M. 306776

308411



RECORD:

P.I. 206+90.4

CONST. PLANS 1923-24

$\Delta = 32^\circ - 24'$ Rec.

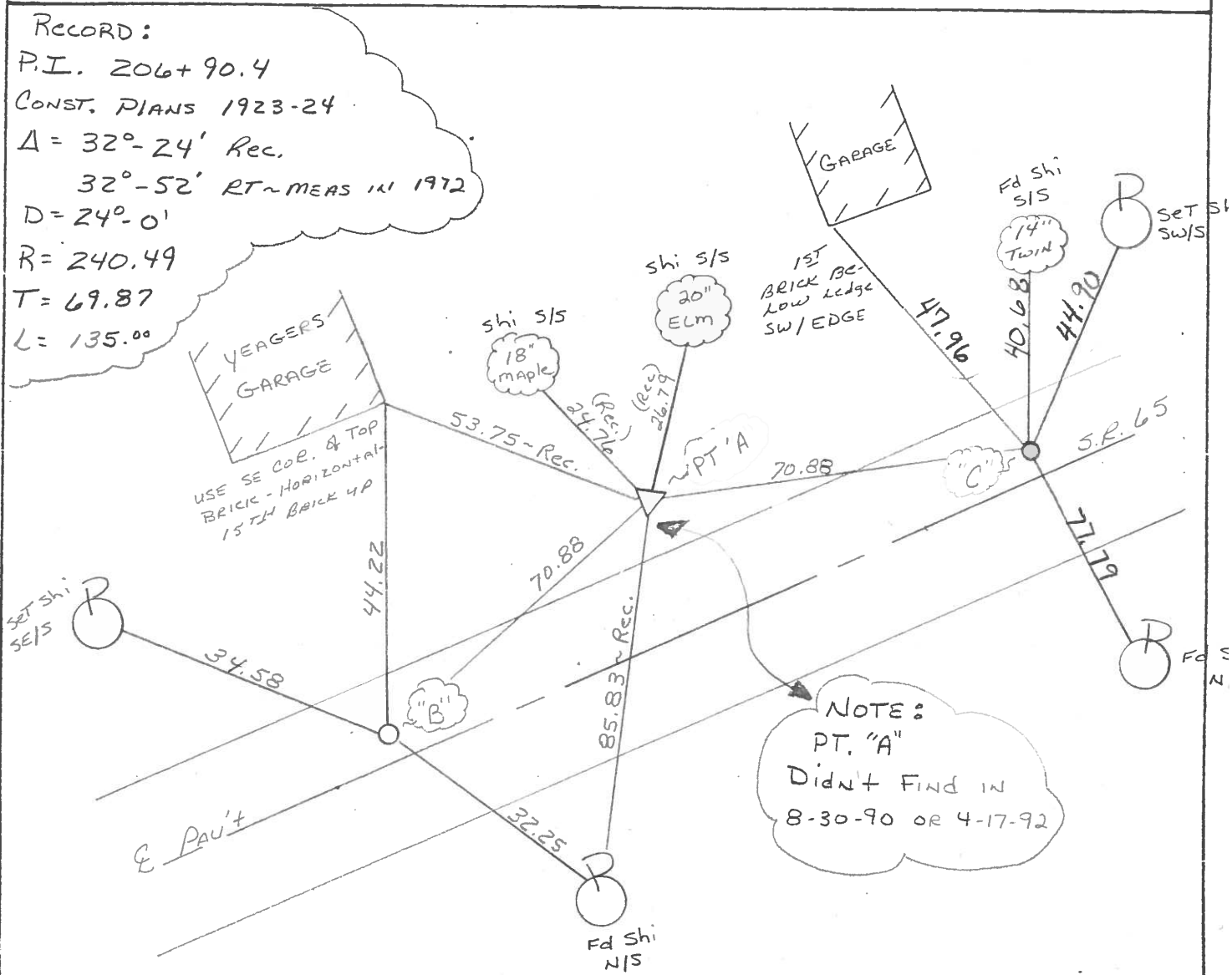
$32^\circ - 52'$ RT ~ MEAS IN 1972

$D = 24^\circ - 0'$

$R = 240.49$

$T = 69.87$

$L = 135.00$



NOTE:
PT. "A"
Didn't Find in
8-30-90 or 4-17-92

OD.O.T. DISTRICT 2 SURVEY OFFICE

SHEET 41 OF

County Wood S.R. 65

Date 6-14-82
12-14-81

Township Washington

Weather Partly Clear

Section 35

Temp. +34°

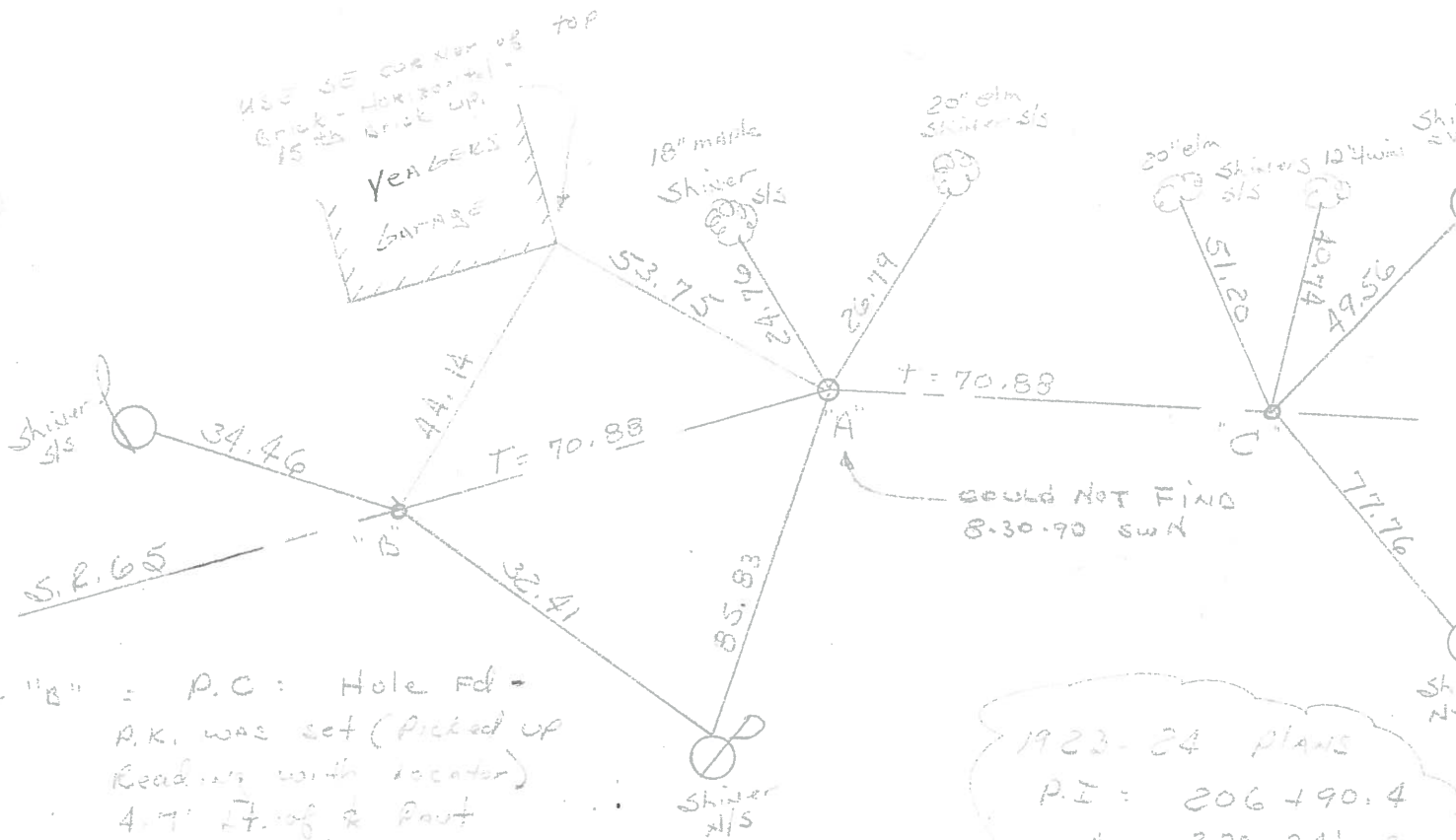
T_N, R_E

Personnel Hoffman
Houserholder

12-F



pt "A": P.I. = 1/2" steel pipe set on surface - Project sta ± 307+54
19.2' Lt. of & PAUT
8.1' N. of N. EP.



pt "B" = P.C. = Hole Fd -
P.K. was set (Picked up
Readings with locator)
4.7' Lt. of & PAUT
4.00 to N. EP.
14.3 to S. EP.

pt "C" = P.T. = Hole Fd.
P.K. was set - No Reading
with locator
4.6' Lt. of & PAUT
4.5' to N. EP.
14.5' to S. EP.

1923-24 plans
P.I. = 206+90.4
Δ = 32°-24' - Rec
32°-52' rt-me
197
D = 240.0'
R = 240.49
T = 69.87
L = 135.00