

O.D.O.T. DISTRICT 2 SURVEY OFFICE (USE ONLY)

PERSONNEL

REFERENCE NO. 12 H

SHEET 3 OF 63

NOTES RHOADES

DATE 4/11/22

ROUTE SR 65

H.C. NIESE

WEATHER FAIR

COUNTY WOOD

R.C. KETNER

TEMP. 63°

TOWNSHIP WASHINGTON

O'DONNELL

SECTION 35

DWG BY RHOADES

PID 95796

T 6 N R 9 E

TYPE MONUMENT MAG/WASHER

ON SURFACE - ~~BELOW~~ ON

OFFSET \varnothing PAVEMENT 4.7' LT : ~~RT~~

5.7' TO LT EDGE PAVEMENT

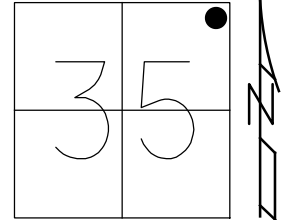
STATION: 308+07.44

HORZ.DATUM: NAD83 2011

GEOID: NAVD88 2018

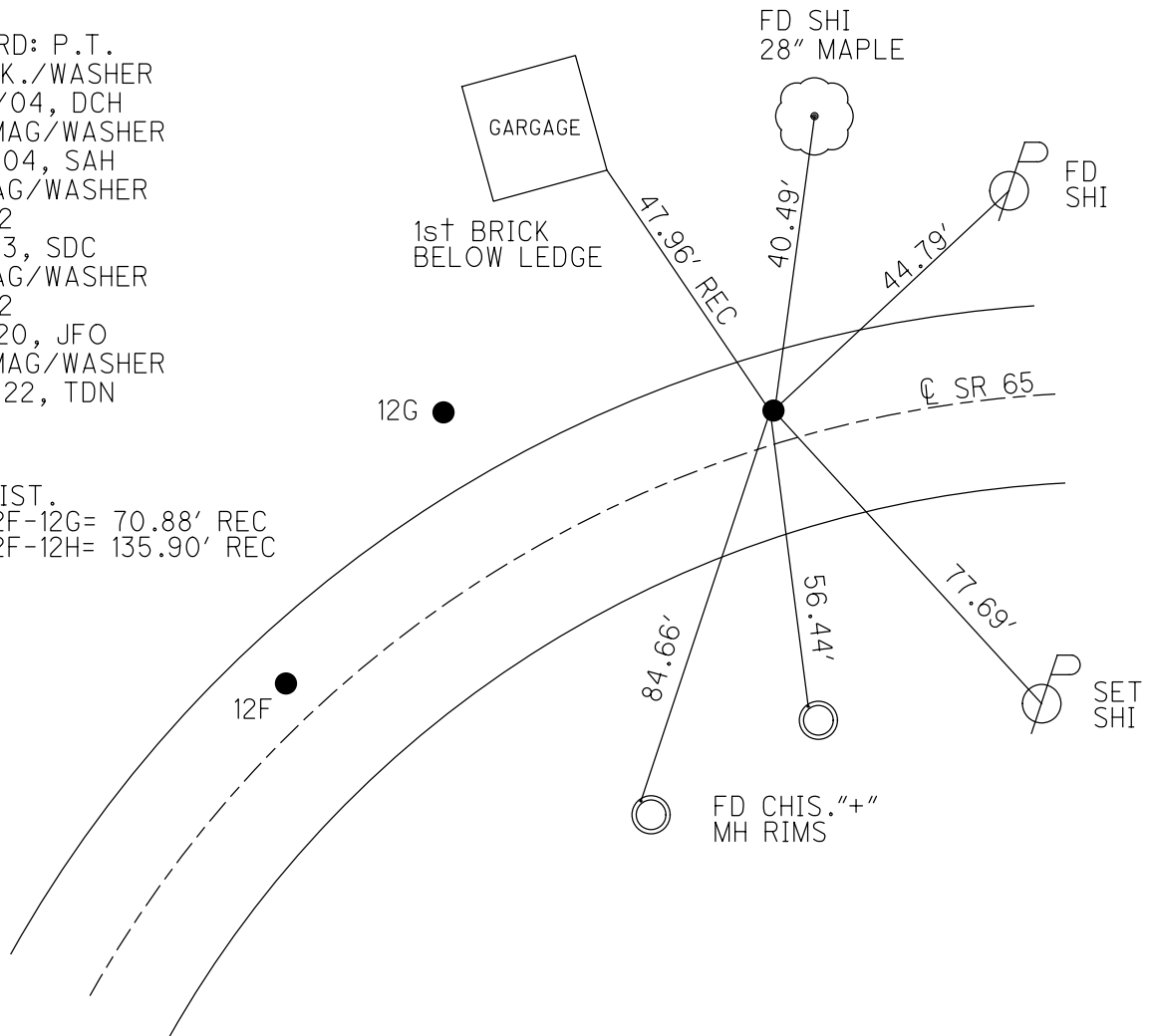
GRID: NORTHING: 650378.453

EASTING: 161540.165



RECORD: P.T.
 FD P.K./WASHER
 6/23/04, DCH
 SET MAG/WASHER
 9/16/04, SAH
 FD MAG/WASHER
 REFH12
 8/6/13, SDC
 FD MAG/WASHER
 REFH12
 11/4/20, JFO
 SET MAG/WASHER
 10/7/22, TDN

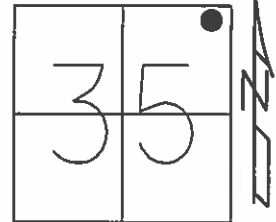
DIST.
 12F-12G= 70.88' REC
 12F-12H= 135.90' REC



O.D.O.T. DISTRICT 2 SURVEY OFFICE (USE ONLY)

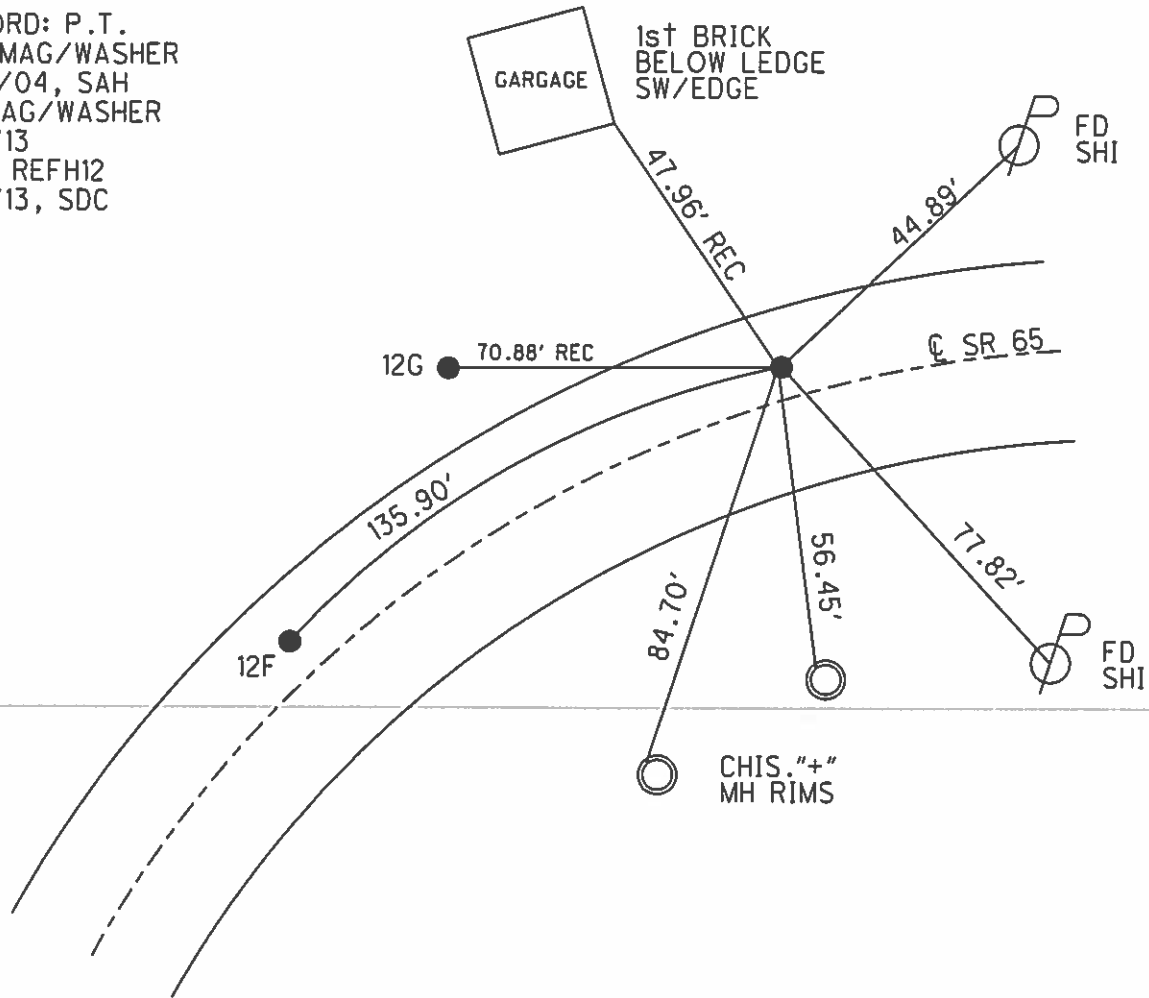
PERSONNEL	REFERENCE NO. <u>12 H</u>	SHEET <u>3</u> OF <u>63</u>
NOTES <u>NUHFER</u>	DATE <u>6/23/04</u>	ROUTE <u>SR 65</u>
H.C. <u>HOMAN</u>	WEATHER <u>SUNNY</u>	COUNTY <u>WOOD</u>
R.C. <u>ATKINS</u>	TEMP. <u>78°</u>	TOWNSHIP <u>WASHINGTON</u>
		SECTION <u>35</u>
		T <u>6</u> N R <u>9</u> E

TYPE MONUMENT P.K./WASHER
 ON SURFACE - ~~BELOW~~ ON
 LEFT - PAV'T - ~~RIGHT~~ 4.7'
5.7' TOLT EDGE PAVEMENT
 S.L.M. 308+32.20



Grid: Northing: 650378.446 Easting: 1615540.191

RECORD: P.T.
 SET MAG/WASHER
 9/16/04, SAH
 FD MAG/WASHER
 8/5/13
 GPS, REFH12
 8/6/13, SDC



O.D.O.T. DISTRICT 2 SURVEY OFFICE

PERSONNEL

REFERENCE NO. 12 F

SHEET 48 OF 49

NOTES Nufter

H.C. Homan

R.C. Atkins

DATE 6-23-04

WEATHER Sunny

TEMP. +78°F

ROUTE S.R. 65

COUNTY Wood

TOWNSHIP Washington

SECTION 35

T6 N R 9 E

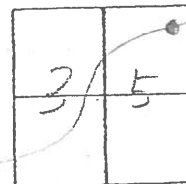
TYPE MONUMENT Pts B+C PK/W

ON SURFACE - ~~REVISION~~ surface

LEFT - ~~RIGHT~~ B - 4.4' Lt. - C - 4.7' Lt.

TO Lt. EDGE PAVEMENT

S.L.M. B - 306+73 C - 308+07



Record: A

P.I. 206+90.4

Cons: Plans 1923-24

$\Delta = 32^\circ - 24' \text{ Rec}$

$32^\circ - 52' \text{ RT} - \text{meas in 1972}$

$D = 24^\circ - 0'$

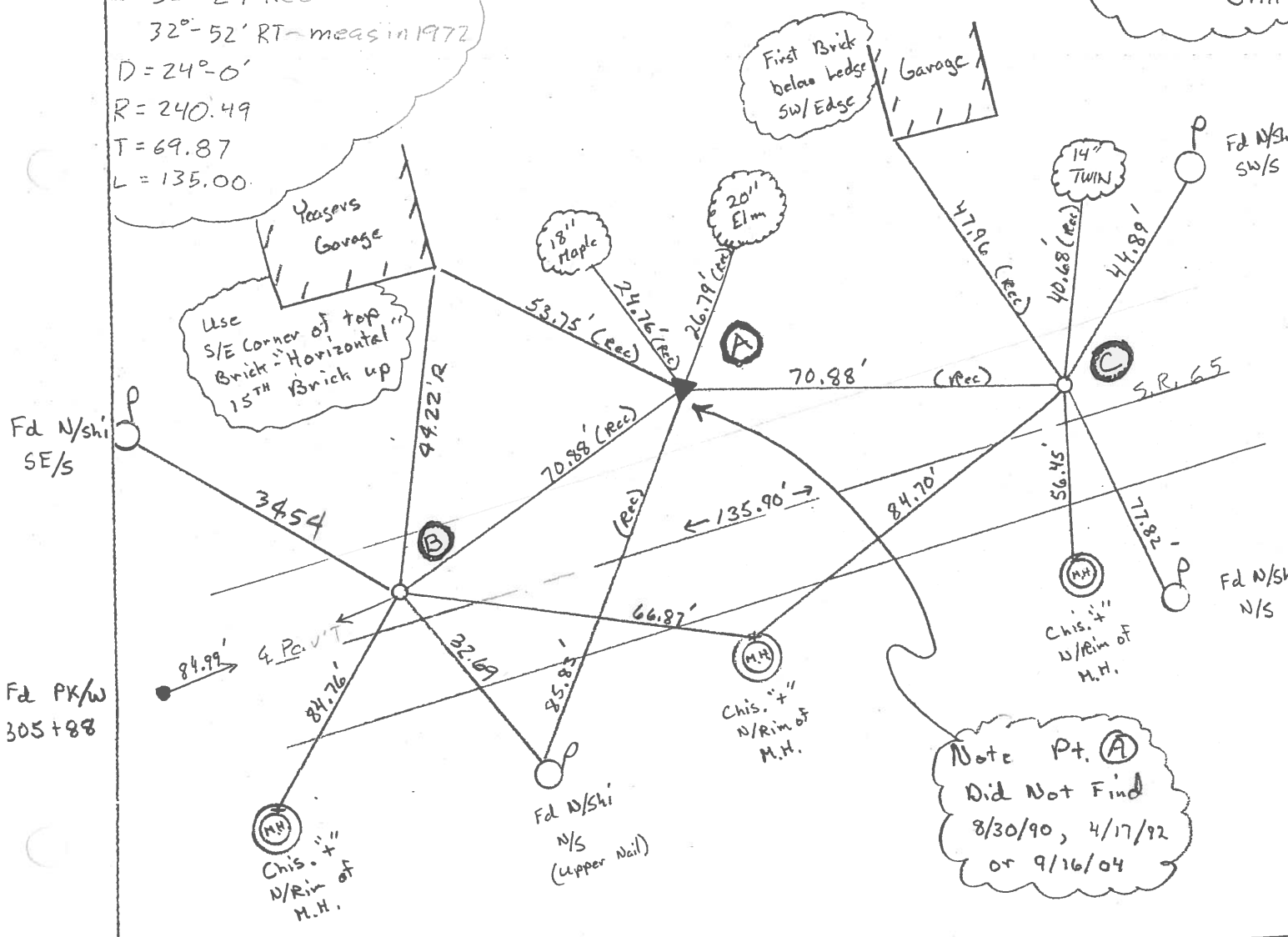
$R = 240.49$

$T = 69.87$

$L = 135.00$

(135.90' between Pts)

Set Mag/w
Pts B+C
9-16-04
SAH



O.D.O.T. DISTRICT 2 SURVEY OFFICE

PERSONNEL

REFERENCE NO. 12 F

SHEET 33 OF 34

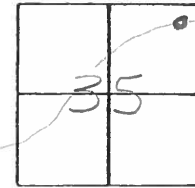
NOTES BARNHISEL
 H.C. CURTIS
 R.C. VAN DUSEN
Lochake
Romeo

DATE 4-17-92
 WEATHER RAIN
 TEMP. +50°

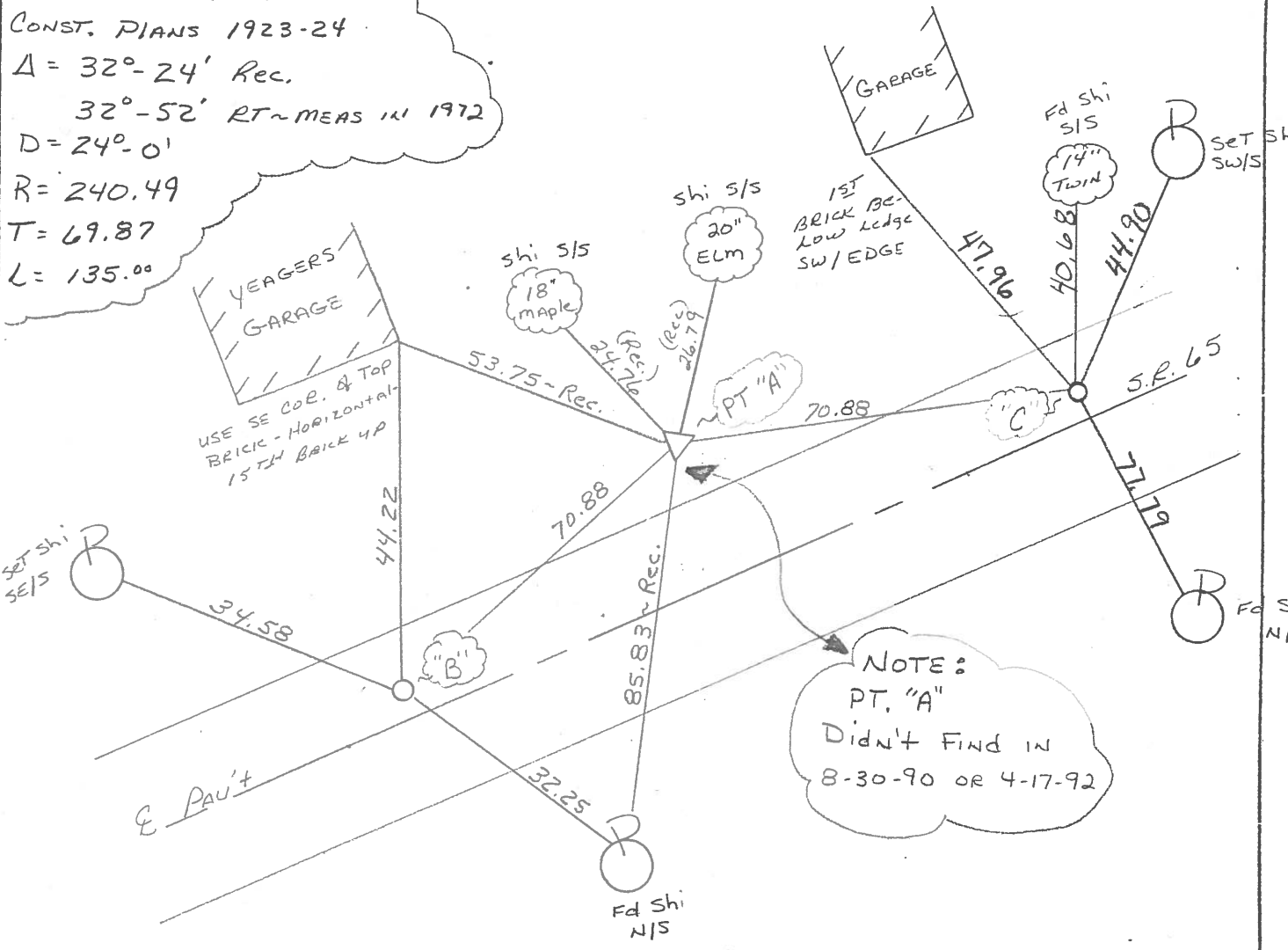
ROUTE 65
 COUNTY WOOD
 TOWNSHIP WASHINGTON
 SECTION 35
T 6 N R 9 E

Set P.K's
 WASHERS
 5-1-92
 C.L.

TYPE MONUMENT PT "B" PT. "C"
 ON SURFACE - ~~BELOW~~ P.K. WASHER / SHANK
 LEFT - PAV'T. - RIGHT 4.7 / 4.6
BOTH 4.6 TO LT EDGE PAVEMENT
 S.L.M. 306776 308411



RECORD:
 P.I. 206+90.4
 CONST. PLANS 1923-24
 $\Delta = 32^\circ - 24'$ Rec.
 $32^\circ - 52'$ RT ~ MEAS IN 1972
 $D = 24^\circ - 0'$
 $R = 240.49$
 $T = 69.87$
 $L = 135.00$



NOTE:
 PT. "A"
 Didn't Find in
 8-30-90 or 4-17-92

ODOT. DISTRICT 2 SURVEY OFFICE

SHEET 41 OF

County Wood S.R. 65

Date 12-14-81

Township Washington

Weather Partly Clear

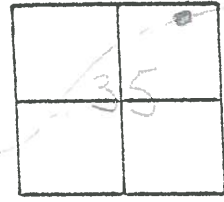
Section 35

Temp. +34°

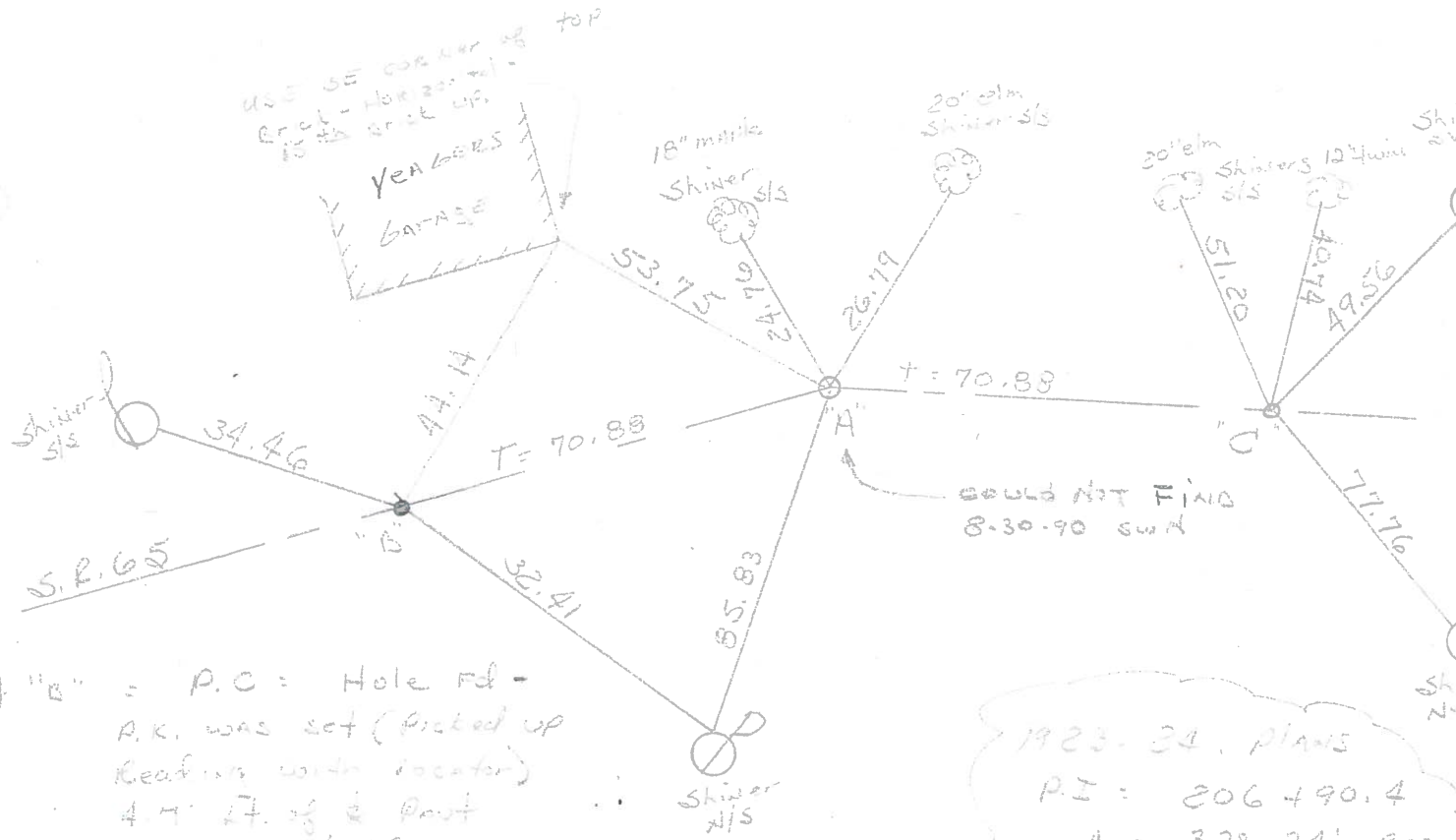
T_N, R_E

Personnel Hoffman
Householder

12-F



pt "A" = P.I. = 1/2" steel pipe Rd @ surface Project Sta 4 357+54
19.2' Lt. of 2 Pout
3.1' N. of N.E.P.



pt "B" = P.C. = Hole Rd -
P.K. was set (picked up
Reading with locator)
4.7' Lt. of 2 Pout
4.00 to N.E.P.
14.3 to S.E.P.

pt "C" = P.T. = Hole Rd.
P.K. WAS set - No Reading
with locator
4.6' Lt. of 2 Pout
4.5' to N.E.P.
14.5' to S.E.P.

1923-34. Plans
P.I. = 206+90.4
Δ = 32°-24' - Rec
32°-52' Pt-mo
197
D = 240-0'
R = 240.49
T = 69.87
L = 135.00