

O.D.O.T. DISTRICT 2 SURVEY OFFICE (USE ONLY)

PERSONNEL

REFERENCE NO. 12 J

SHEET 5 OF 63

NOTES RHOADES

DATE 4/11/22

ROUTE SR 65

H.C. NIESE

WEATHER FAIR

COUNTY WOOD

R.C. KETNER

TEMP. 63°

TOWNSHIP WASHINGTON

O'DONNELL

DWG BY RHOADES

PID 95796

SECTION 35

T 6 N R 9 E

TYPE MONUMENT MAG/WASHER

ON SURFACE - ~~BELOW~~ ON

OFFSET 2.2' LT : ~~RT~~

7.5' TO LT EDGE PAVEMENT

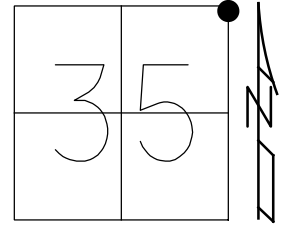
STATION: 310+67.36

HORZ.DATUM: NAD83 2011

GEOID: NAVD88 2018

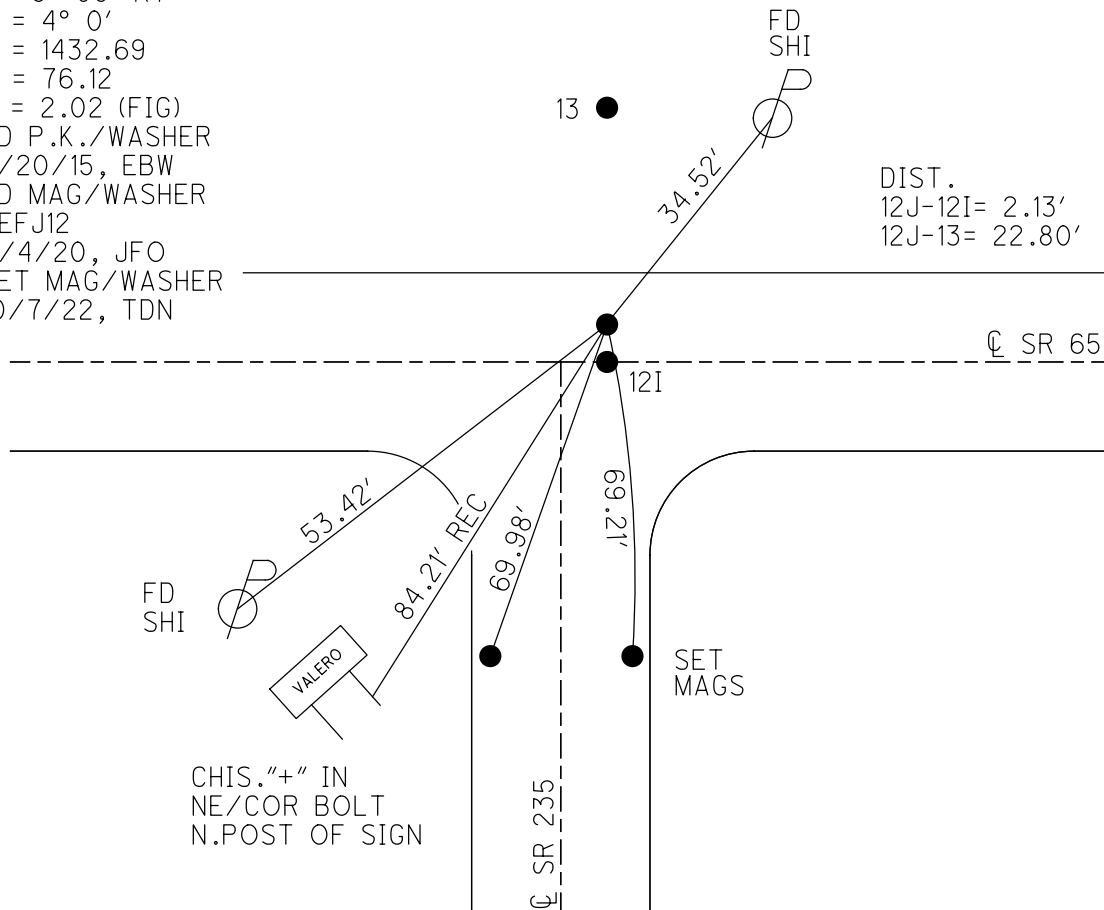
GRID: NORTHING: 650401.261

EASTING: 1615800.613



RECORD: P.I.
 STA. 210+24.6
 CURVE DATA FROM
 CONSTR.PLAN 1923-24
 $\Delta = 6^\circ 05' RT$
 $D = 4^\circ 0'$
 $R = 1432.69$
 $T = 76.12$
 $E = 2.02$ (FIG)
 FD P.K./WASHER
 4/20/15, EBW
 FD MAG/WASHER
 REFJ12
 11/4/20, JFO
 SET MAG/WASHER
 10/7/22, TDN

DIST.
 12J-12I = 2.13'
 12J-13 = 22.80'



O.D.O.T. DISTRICT 2 SURVEY OFFICE (USE ONLY)

PERSONNEL

REFERENCE NO. 12 J

SHEET 5 OF 63

NOTES RHOADES DATE 4/20/15

H.C. WESTFALL WEATHER WINDY

R.C. O'DONNELL TEMP. 58°

ROUTE SR 65

COUNTY WOOD

TOWNSHIP WASHINGTON

SECTION 35

T 6 N R 9 E

TYPE MONUMENT P.K./WASHER

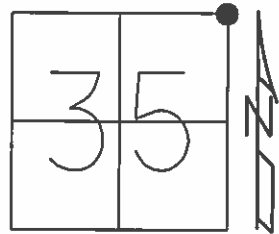
ON SURFACE - ~~BELOW~~ ON

LEFT - PAV'T - ~~RIGHT~~ 2.2'

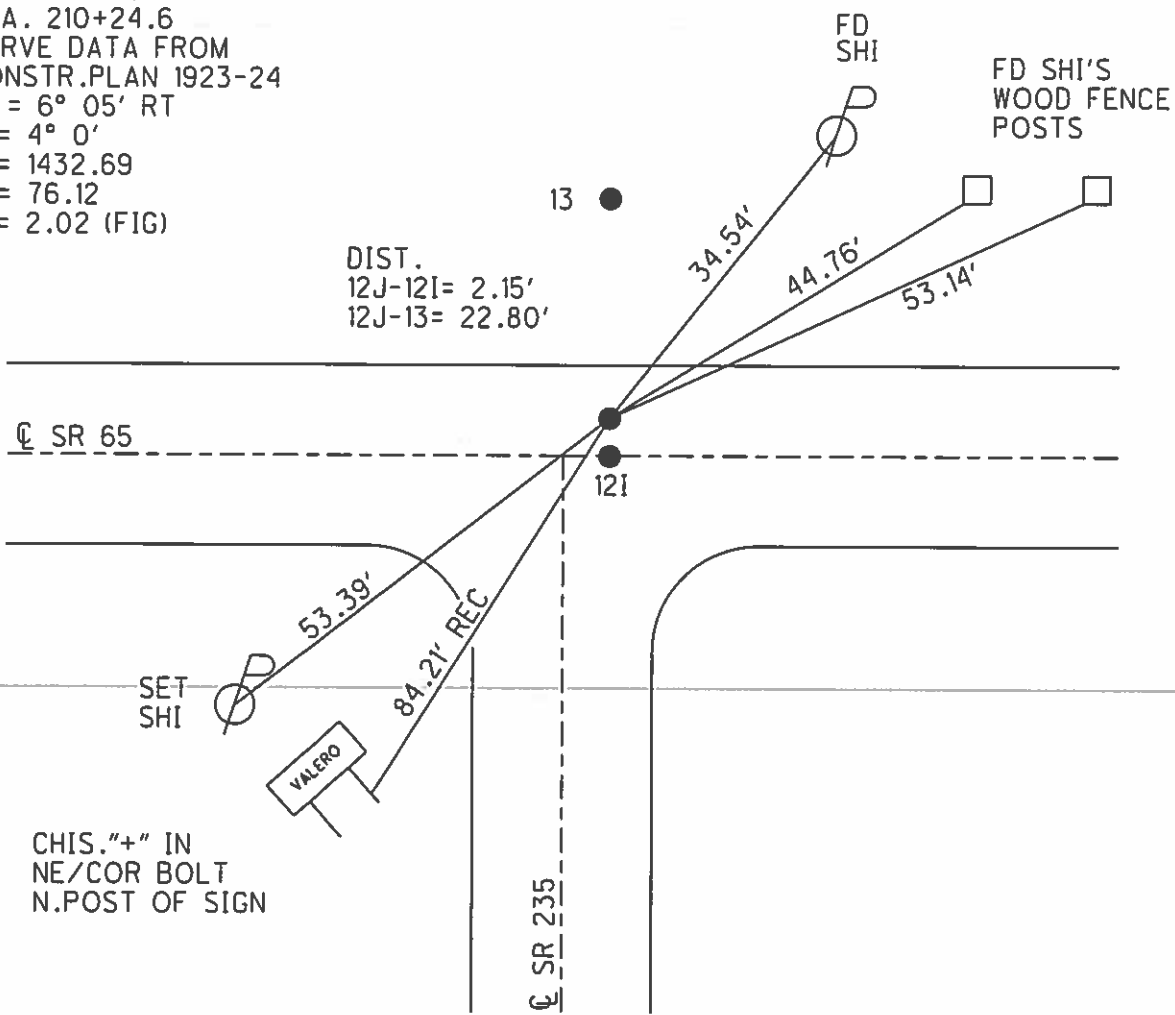
7.5' TOLT EDGE PAVEMENT

S.L.M. 310+99.2

Grid: Northing: 650401.372 Easting: 1615800.550



RECORD: P.I.
 STA. 210+24.6
 CURVE DATA FROM
 CONSTR. PLAN 1923-24
 $\Delta = 6^\circ 05' RT$
 $D = 4^\circ 0'$
 $R = 1432.69$
 $T = 76.12$
 $E = 2.02 (FIG)$



CHIS. "+" IN
 NE/COR BOLT
 N. POST OF SIGN

O.D.O.T. DISTRICT 2 SURVEY OFFICE

PERSONNEL

REFERENCE NO. 13

SHEET 49 OF 49

NOTES Nuhter

H.G. Homan

R.C. Atkins

DATE 6-23-04

WEATHER Sunny

TEMP. +78°F

ROUTE S.R. 65

COUNTY Wood

TOWNSHIP Washington

SECTION 35

T R

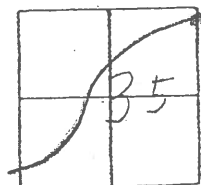
TYPE MONUMENT A = 3/4" iron pipe B + C = PK/W 12-I

ON SURFACE - ~~BLAND~~ Surface

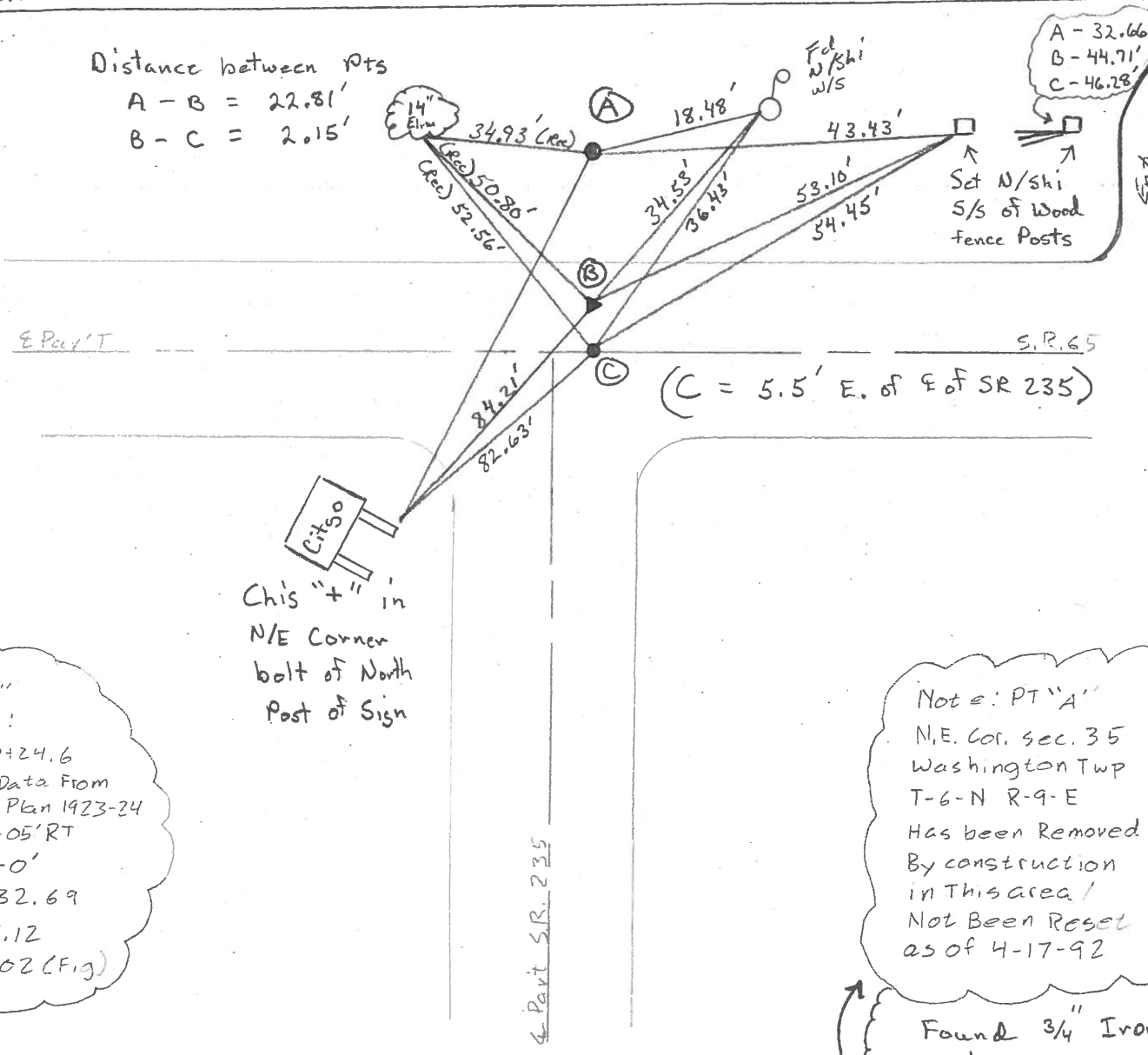
LEFT - ~~ON PAVT/4/13/11~~ Con & (A) (B) See Notes

TO EDGE PAVEMENT

S.L.M. 310 + 74



Distance between Pts
 A - B = 22.81'
 B - C = 2.15'



A - 32.66'
 B - 44.71'
 C - 46.28'

Set N/S of Wood Fence Posts

(C = 5.5' E. of E of SR 235)

Chis "+" in N/E Corner bolt of North Post of Sign

PT "B"
 Record:
 P.I. 210+24.6
 Curve Data From Const. Plan 1923-24
 $\Delta = 6^{\circ}-05' RT$
 $D = 4^{\circ}-0'$
 $R = 1432.69$
 $T = 76.12$
 $E = 2.02 (Fig)$

Note: PT "A"
 N/E Cor. sec. 35
 Washington Twp
 T-6-N R-9-E
 Has been Removed
 By construction
 in this area!
 Not Been Reset
 as of 4-17-92

Found 3/4" Iron Pipe 6-23-04

O.D.O.T. DISTRICT 2 SURVEY OFFICE

PERSONNEL

REFERENCE NO. 13

SHEET 34 OF 34

NOTES BARNHISEL

5/14/04

H.C. CURTIS

DATE 4-17-92

ROUTE 65

R.C. VAN DUSEN

WEATHER RAIN

COUNTY WOOD

Loehrke

TEMP. +50°

TOWNSHIP WASHINGTON

RomeTo

SECTION 35

12-I

12-J

T. 6 N. R. 9 E.

TYPE MONUMENT PT "B" PK (SHANK)

PT "C" - Fd P.I./WASHER

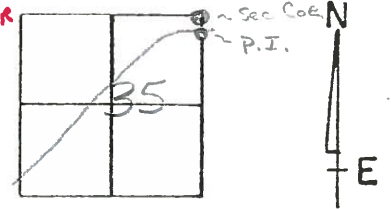
ON SURFACE - BELOW YES

yes

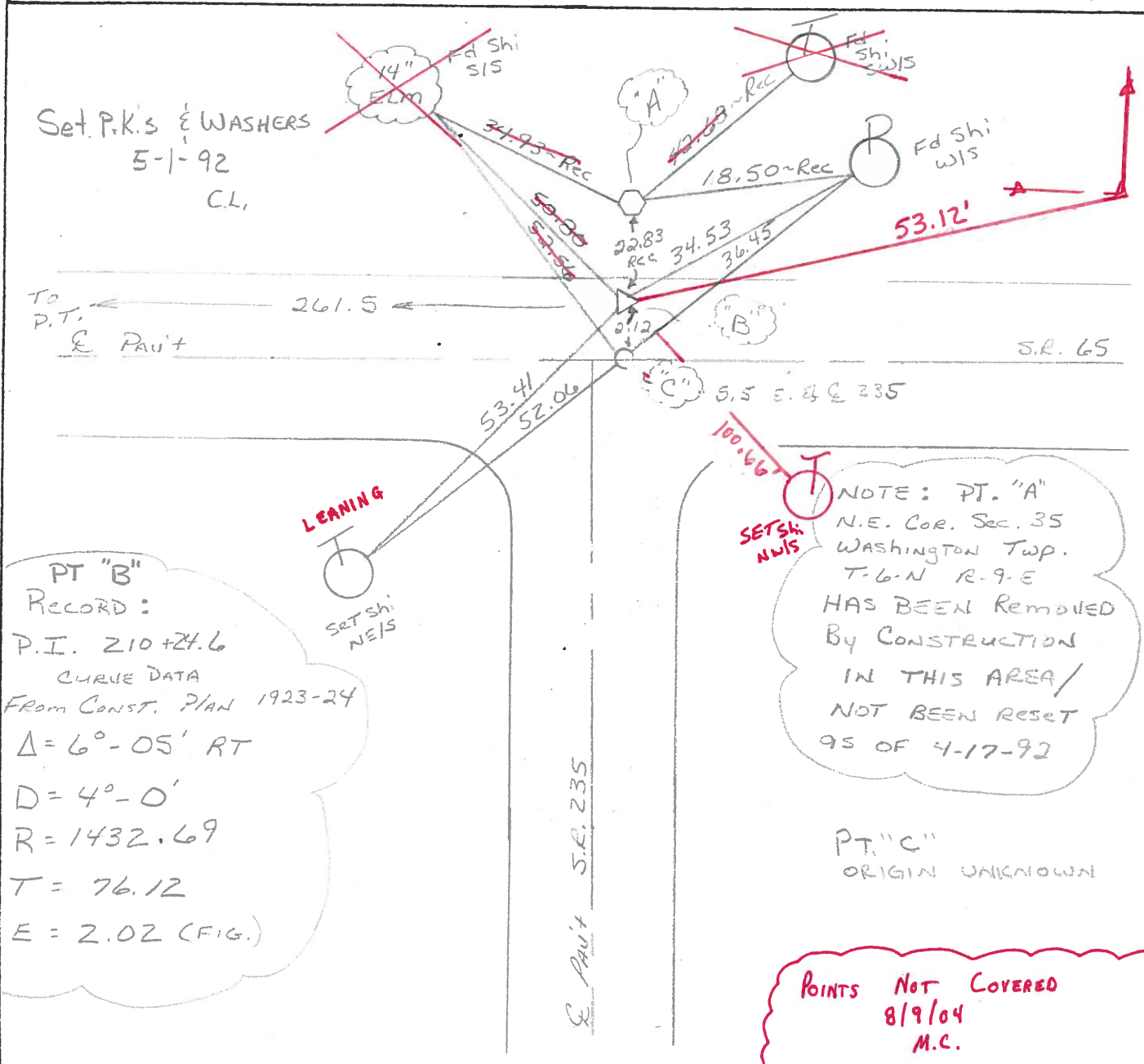
LEFT- & PAV'T. - RIGHT 2.2

ON & 9.8 To LT Edge

2.5 TO LT EDGE PAVEMENT



S.L.M. 310 + 74



OD.O.T. DISTRICT 2 SURVEY OFFICE

SHEET 42 OF

County Wood S.R. 65

Date 6-14-82
12-14-81

Township Washington

Weather Partly Clear

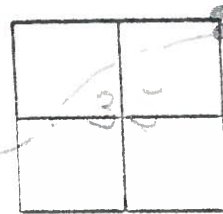
Section 35

Temp. +39°

T6N, R9E

Personnel Hoffman

12-I



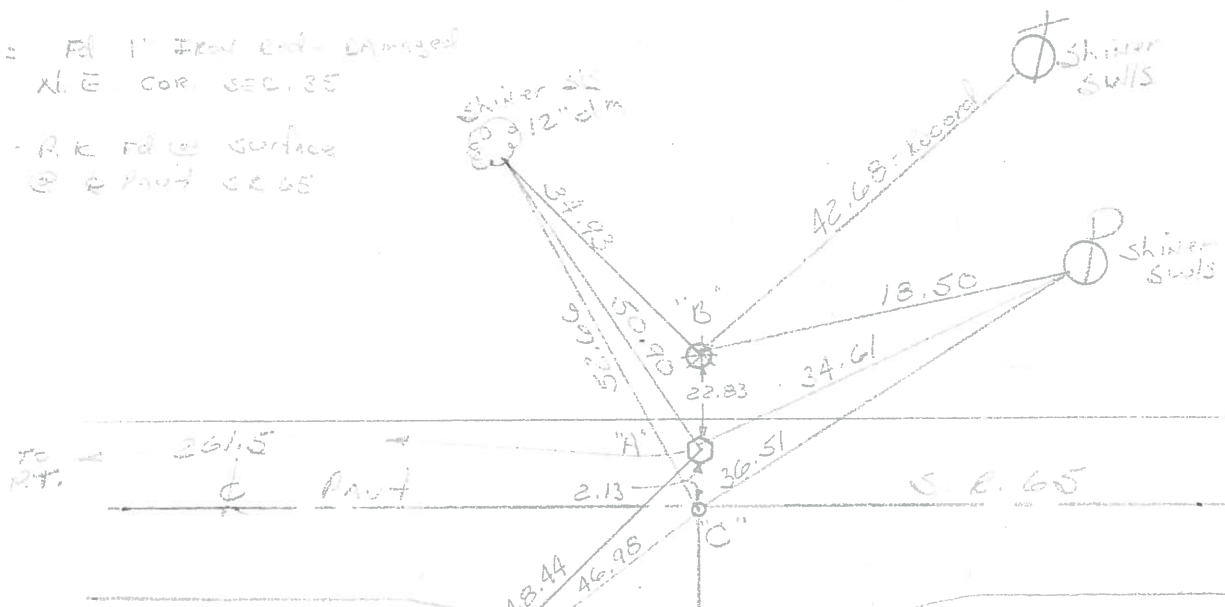
12-J

13

PT "A" - P.I. = Copperweld marker At. @ surface - Project Sta = 310 + 86
2.13 L.T. of R. PAVT SE WS
7.5' to N.E.R.

PT "B" = At 1" Iron end - Damaged
N.E. COR. SEC. 35

PT "C" = R.R. rd @ surface
@ R PAVT SE WS



POINT "B"
N.E. COR. SEC. 35
WASHINGTON TWP.
T-6-N R-9-E

P.I. 210+24.6
CURVE DATA
FROM CONST. PLAN 1923-
A = 6°-05' RT.
D = 40'-0'
R = 1432.69
T = 76.12'
L = 152.08'
(E = 2.02' FIG.)

PAVT SE 235

PERSONNEL TITLE PERSONNEL TITLE

COUNTY Wood. DATE May 2, 1969

S. R. #65 WEATHER Clear.

SEC. SP*235 to SE*582 TEMP. 55°

DESCRIPTION Ties to Control points (State & Private) JOB NO. _____

LEFT CENTER LINE RIGHT

