

O.D.O.T. DISTRICT 2 SURVEY OFFICE (USE ONLY)

PERSONNEL

REFERENCE NO. 13 A

SHEET 7 OF 63

NOTES RHOADES

DATE 4/11/22

ROUTE SR 65

H.C. NIESE

WEATHER FAIR

COUNTY WOOD

R.C. KETNER

TEMP. 63°

TOWNSHIP WASHINGTON

O'DONNELL

SECTION 25

DWG BY RHOADES

PID 95796

T 6 N R 9 E

TYPE MONUMENT MAG/WASHER

ON SURFACE - ~~BELOW~~ ON

OFFSET Q PAVEMENT 2.9' ~~±~~ : RT

7.2' TO RT EDGE PAVEMENT

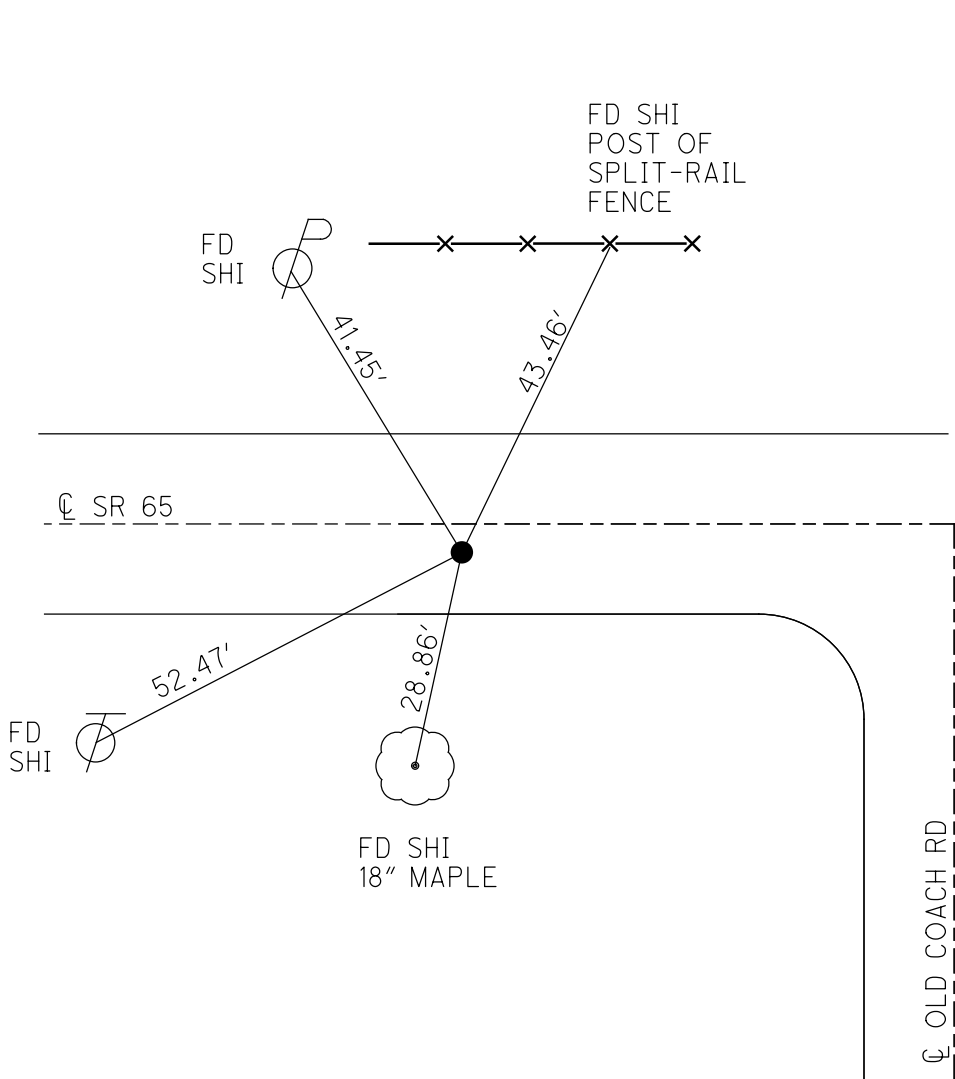
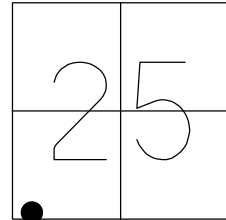
STATION: 316+65.77

HORZ. DATUM: NAD83 2011

GEOID: NAVD88 2018

GRID: NORTHING: 650396.113

EASTING: 1616399.105



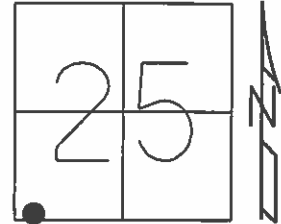
RECORD: P.I.
 STA. 216+23.2
 $\Delta = 1^\circ 35'$ RT
 $\Delta = 1^\circ 32'$ RT
 MEAS. 1972
 FD P.K./WASHER
 5/14/04
 SET P.K./WASHER
 8/31/92, MB
 FD P.K.SHANK
 REFA13
 8/6/13, SDC
 4/20/15, EBW
 SET MAG/WASHER
 NEWREFA13
 7/20/15, JFO
 FD MAG/WASHER
 REFA13
 11/4/20, JFO

Q OLD COACH RD

O.D.O.T. DISTRICT 2 SURVEY OFFICE (USE ONLY)

PERSONNEL	REFERENCE NO. <u>13 A</u>	SHEET <u>7</u> OF <u>63</u>
NOTES	RHOADES	DATE <u>4/20/15</u>
H.C.	WESTFALL	WEATHER <u>WINDY</u>
R.C.	O'DONNELL	TEMP. <u>59°</u>
		ROUTE <u>SR 65</u>
		COUNTY <u>WOOD</u>
		TOWNSHIP <u>WASHINGTON</u>
		SECTION <u>25</u>
		T <u>6</u> N R <u>9</u> E

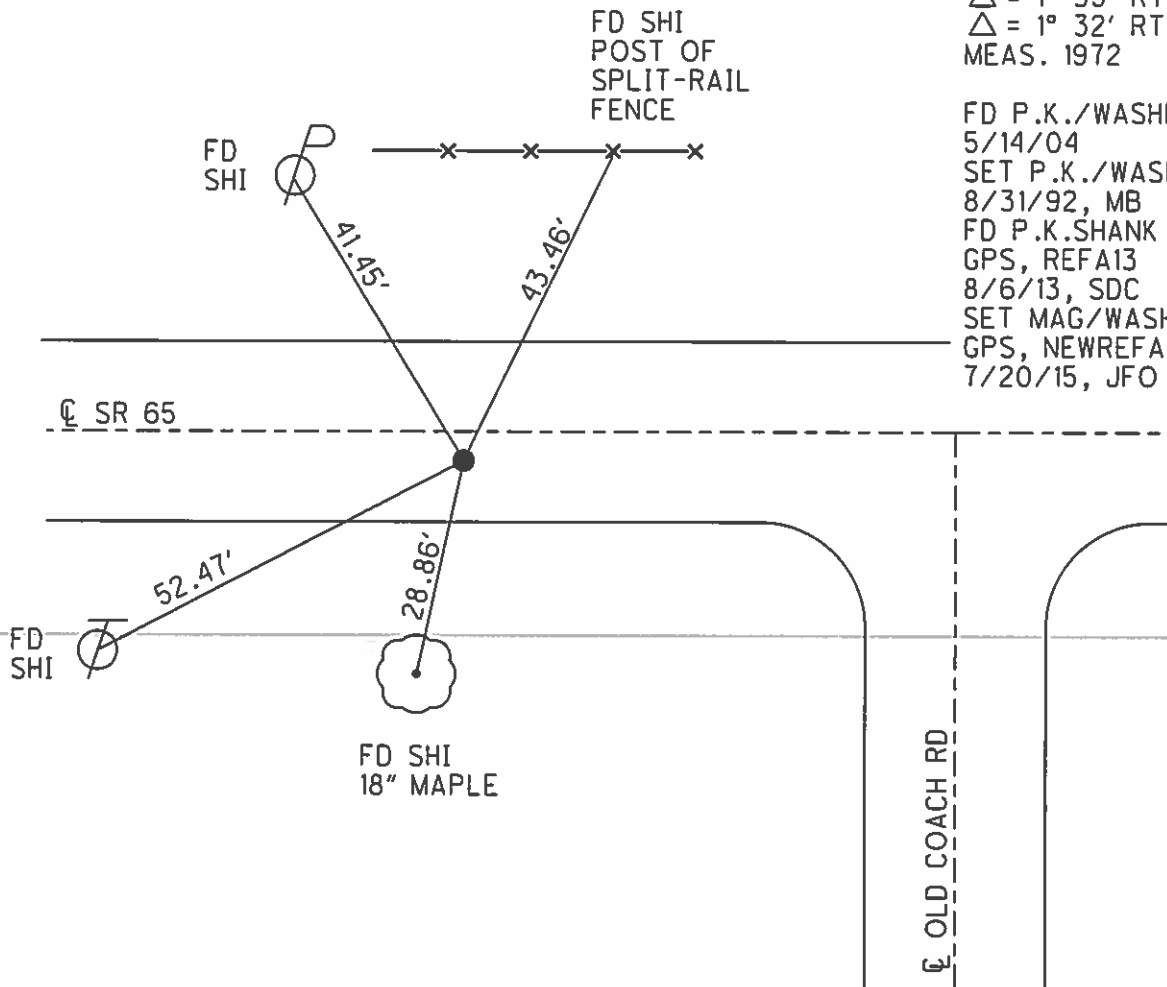
TYPE MONUMENT P.K.SHANK
 ON SURFACE - ~~BELOW~~ ON
~~LEFT~~ - PAV'T - RIGHT 2.9'
7.2' TORT EDGE PAVEMENT
 S.L.M. 316+97.73



Grid: Northing: 650396.097 Easting: 1616399.087

RECORD: P.I.
 STA. 216+23.2
 $\Delta = 1^\circ 35' RT$
 $\Delta = 1^\circ 32' RT$
 MEAS. 1972

FD P.K./WASHER
 5/14/04
 SET P.K./WASHER
 8/31/92, MB
 FD P.K.SHANK
 GPS, REFA13
 8/6/13, SDC
 SET MAG/WASHER
 GPS, NEWREFA13
 7/20/15, JFO



O.D.O.T. DISTRICT 2 SURVEY OFFICE

PERSONNEL

REFERENCE NO. 13-A

SHEET 1 OF 36

NOTES BARNHISEL

5/14/04

H.C. Loehrke

DATE 7-13-92

ROUTE 65

R.C. CURTIS

WEATHER Cloudy

COUNTY WOOD

TEMP. +72°

TOWNSHIP WASHINGTON

SECTION 25

T 6 N R 9 E

Fd. P.K. 5/14/04

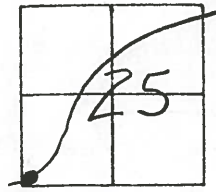
TYPE MONUMENT PK + WASHER

ON SURFACE - ~~BELOW~~ YES

~~SET~~ - C PAV'T. - RIGHT 2.9

2.2 TO RT EDGE PAVEMENT

S.L.M. 316+49



RECORD:

P.I.

STA: 216+23.2

A = 1°-36' RT

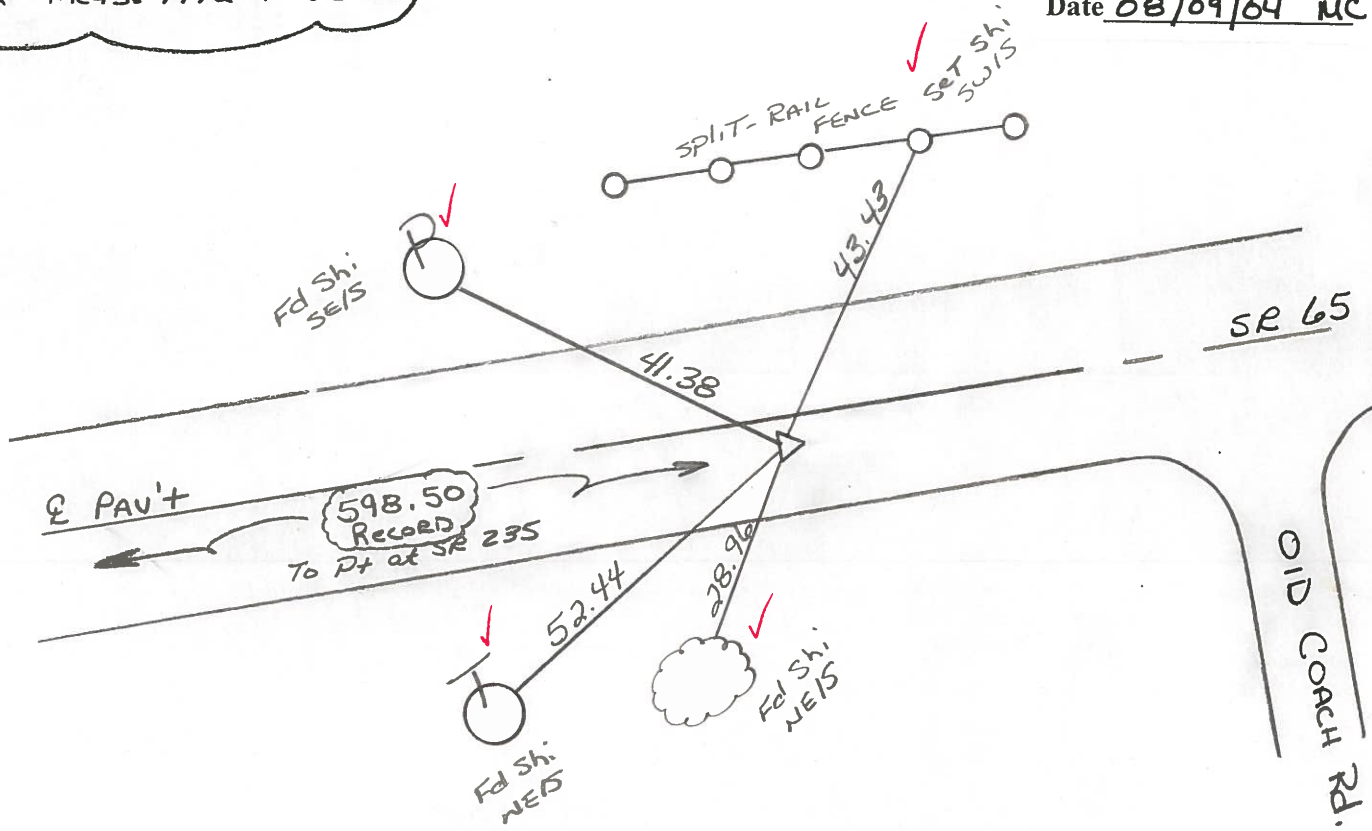
A = meas. 1972 1°-32' RT

Set PK + WASHER

8-31-92

C.L.

Preventive Maintenance
Microsurfaced 2004
Existing Point Uncovered
Date 08/09/04 MC



County Wood S.R. 65

Date 4-2-84

Township WASHINGTON

Weather P.C. Clear

Section 25

Temp. 40°

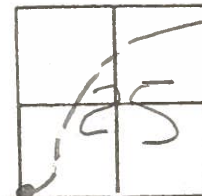
T6N, R9E

Personnel HOFFMAN

LOENRKE

HOUSEHOLDER HC

BARHISEL LC



Fd small R.R. spk @ surface

SLM = 316 + 49

2.7' RT of & PAUT

7.1' TO RTEP

12.5' TO L.T. EP

13A

SET PK/WASHER

10-4-84

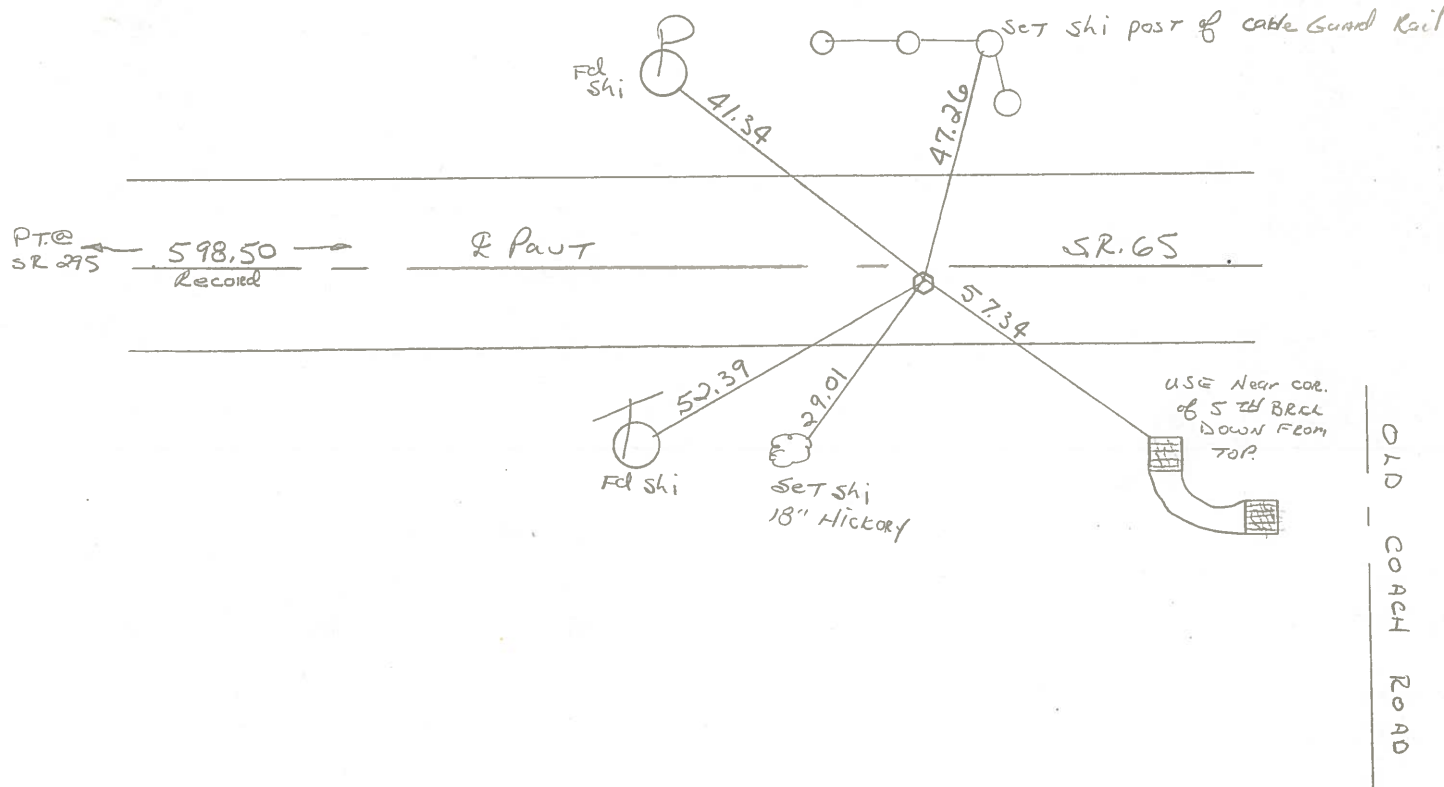
SWH

Record:

P.I. STA. 216 + 23.2

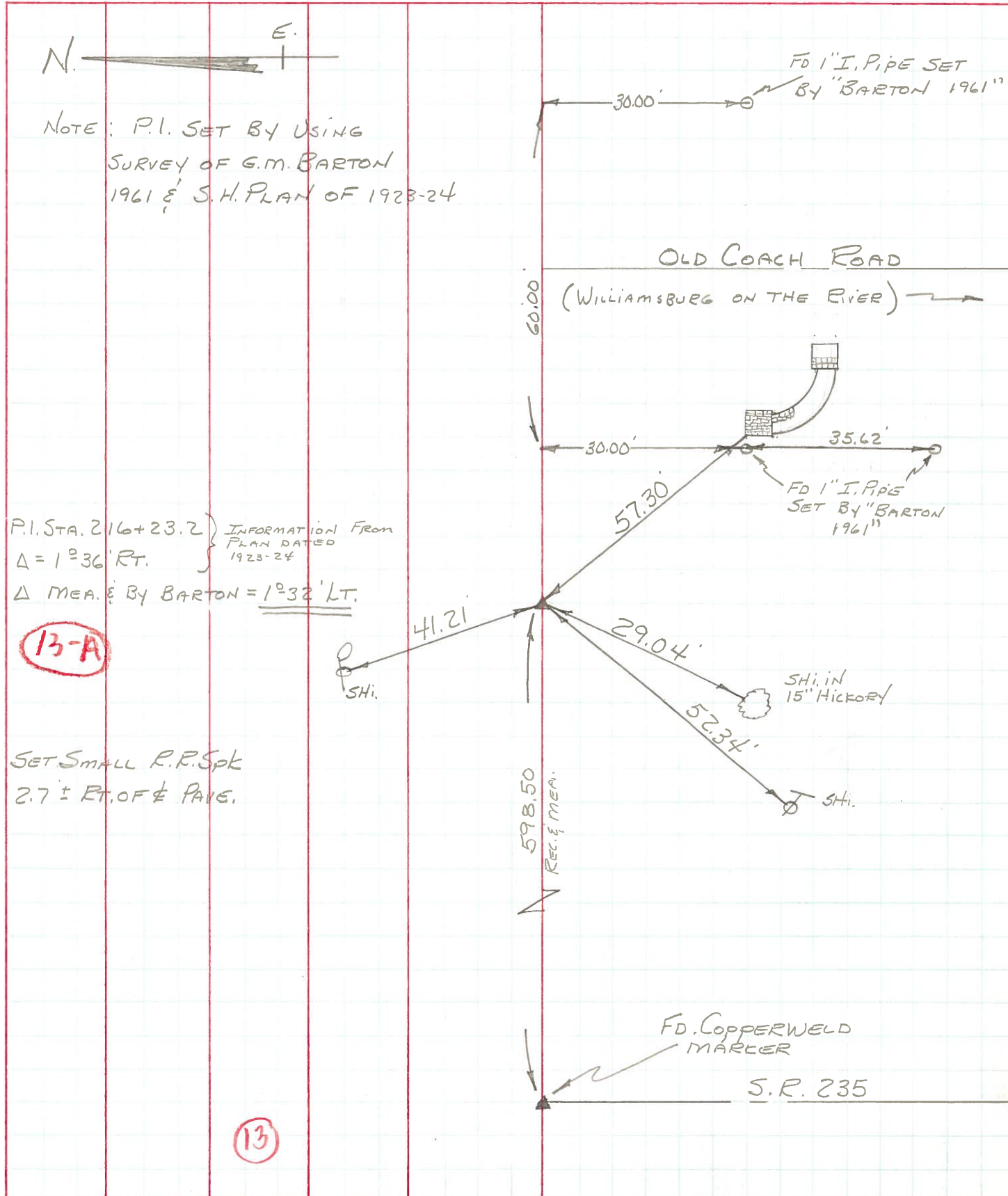
Δ = 10-36' RT

Δ = MEAS 1972 1°-32' LT



PERSONNEL	TITLE	PERSONNEL	TITLE	COUNTY	<u>Wood</u>	DATE	<u>8-29-72</u>
<u>BURNSIDE</u>				S. R.	<u>65</u>	WEATHER	<u>CLEAR</u>
<u>SMITH</u>				SEC.	<u>WASHINGTON TWP</u>	TEMP.	<u>+78°</u>
<u>BOWERS</u>							
<u>KIJOWSKI</u>							

DESCRIPTION ESTABLISH P.I. LEFT CENTER LINE RIGHT JOB NO.



13-A

13

PERSONNEL TITLE PERSONNEL TITLE COUNTY Wood DATE OK 12-12-57
 S. R. #110 WEATHER _____
 SEC. _____ TEMP. _____

DESCRIPTION LEFT CENTER LINE RIGHT JOB NO.

P.I. sta. 173+06.35 $\Delta = 0^\circ - 05' \text{ R.t.}$
 S.P. 6.9#110
 Fd. R.R. spt. 18" in part.

#511

P.I. sta. ?
 Stone

mon. N.E. 41.50'
 mon. S.E. 41.50'

#512

P.I. sta. 199+77.75 $\Delta = 0^\circ - 05' \text{ L.t.}$
 Fd. R.R. spt. (18" in part.)
 Sugar Creek Rd.

#513

P.I. sta. 226+48.15 $\Delta = 1^\circ - 15' \text{ R.t.}$
 Stone-set R.R. spt.
 Range Line Rd.
 Rd. N. & S. is 4' S. of edge part.

#514