

O.D.O.T. DISTRICT 2 SURVEY OFFICE (USE ONLY)

PERSONNEL

REFERENCE NO. 13 C

SHEET 10 OF 63

NOTES RHOADES DATE 4/20/15

ROUTE SR 65

H.C. WESTFALL WEATHER WINDY

COUNTY WOOD

R.C. O'DONNELL TEMP. 59°

TOWNSHIP WASHINGTON

SECTION 25

T 6 N R 9 E

TYPE MONUMENT P.K./WASHER

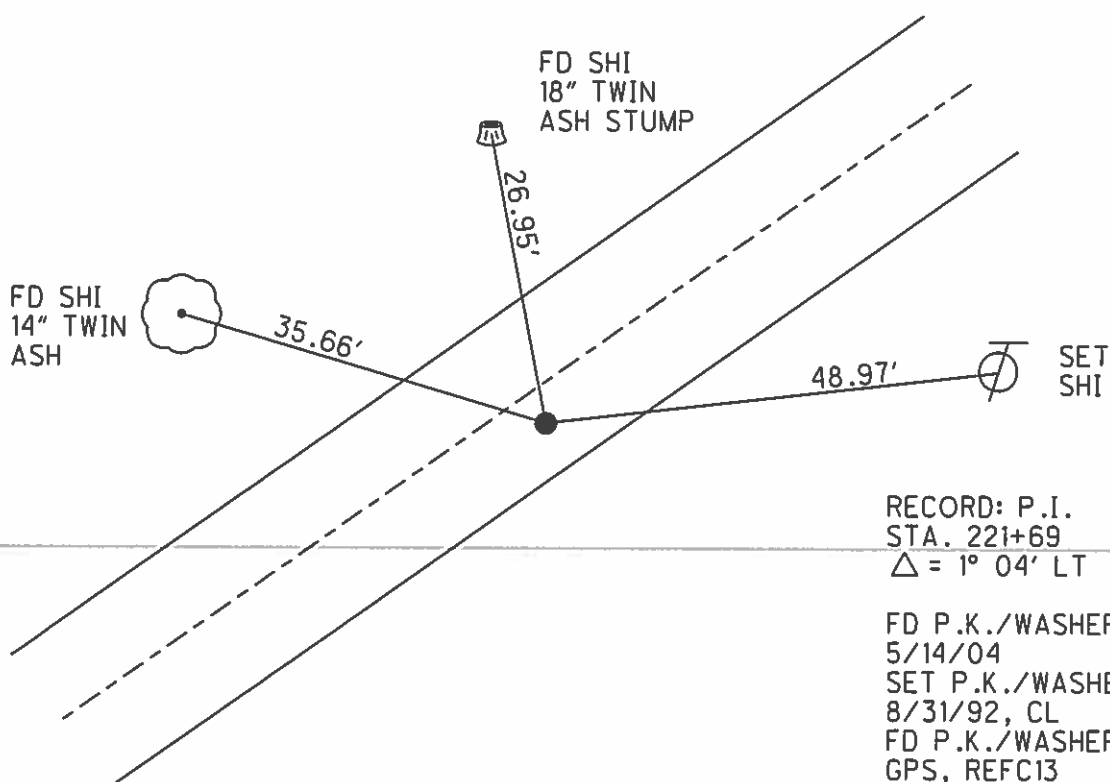
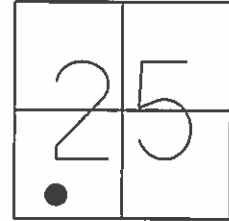
ON SURFACE - ~~BELOW~~ ON

~~LEFT~~ - PAV'T - RIGHT 3.0'

7.2' TORT EDGE PAVEMENT

S.L.M. 321+09.76

Grid: Northing: 650472.689 Easting: 1616796.563



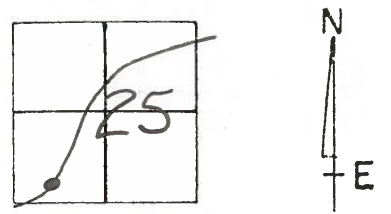
RECORD: P.I.  
STA. 221+69  
 $\Delta = 1^{\circ} 04' \text{ LT}$

FD P.K./WASHER  
5/14/04  
SET P.K./WASHER  
8/31/92, CL  
FD P.K./WASHER  
GPS, REFC13  
8/6/13, SDC  
SET MAG/WASHER  
GPS, NEWREFC13  
7/20/15, JFO

# O.D.O.T. DISTRICT 2 SURVEY OFFICE

PERSONNEL \_\_\_\_\_ REFERENCE NO. 13-C SHEET 3 OF 34  
 NOTES BARNHISEL DATE 5/14/04  
 H.C. Loehrke DATE 7-13-92 ROUTE 65  
 R.C. CURTIS WEATHER Cloudy COUNTY Wood  
 \_\_\_\_\_ TEMP. +72° TOWNSHIP WASHINGTON  
 \_\_\_\_\_ SECTION 25  
 \_\_\_\_\_ T6 NR 9 E

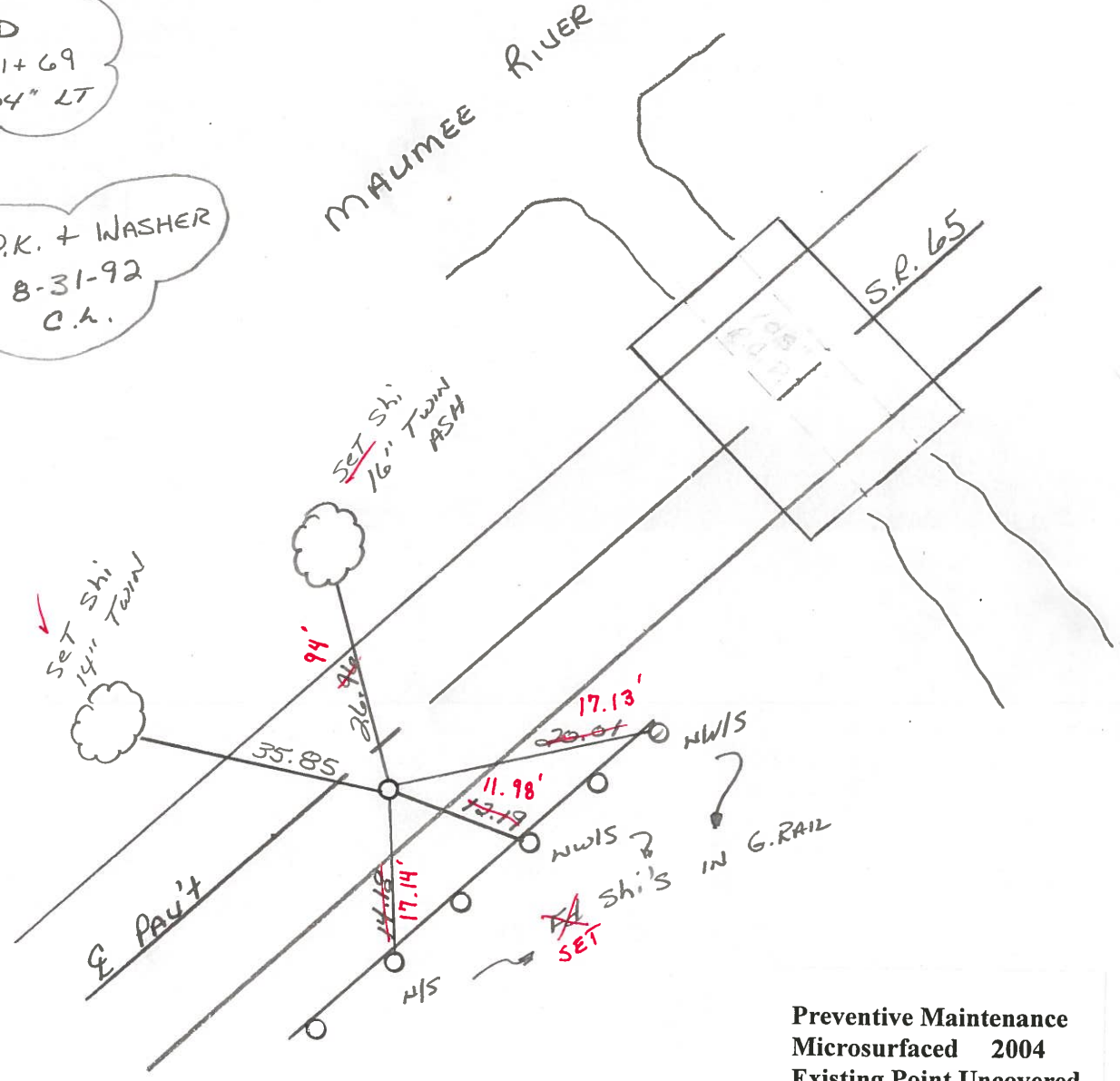
TYPE MONUMENT P.K. & WASHER ✓  
 ON SURFACE - ~~WOOD~~ YES  
~~T-C~~ PAV'T. - RIGHT 3.0 ✓  
7.2 TO RT EDGE PAVEMENT  
 S.L.M. 320+61



Record  
 P.I. 221+69  
 Δ = 1°-04" LT

SET P.K. + WASHER  
 8-31-92  
 C.A.

MAUMEE RIVER



Preventive Maintenance  
 Microsurfaced 2004  
 Existing Point Uncovered  
 Date 8/9/04 MC

County Wood S.R. 65

Date 4-2-84

Township WASHINGTON

Weather Cloudy

Section 25

Temp. 40°

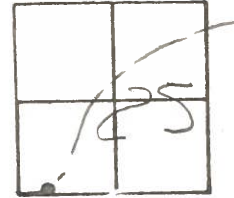
T6N, R9E

Personnel HOFFMAN

LOHRKE

HOUSEHOLDER H.C.

BARNHISEL R.C.



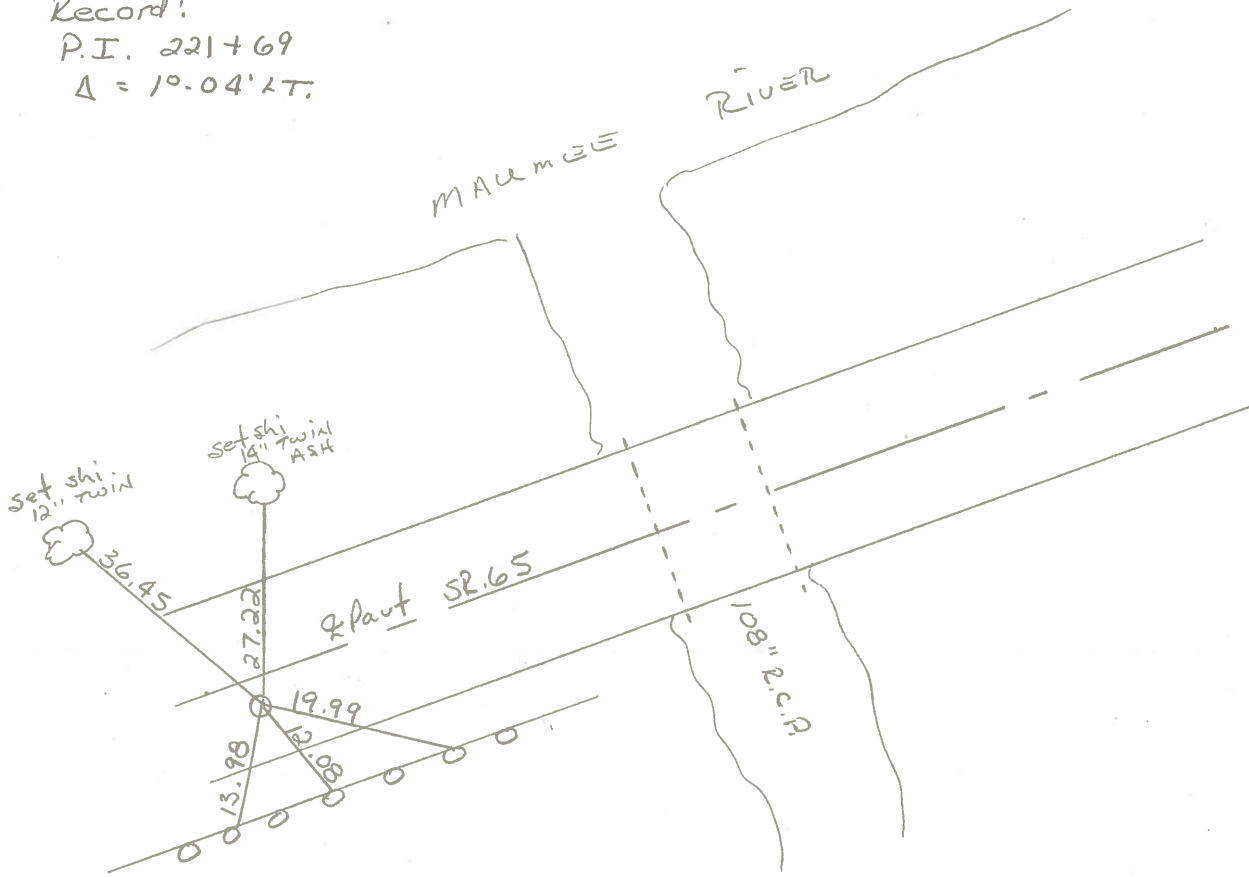
SLM =

13-C

Record:

P.I. 221+69

$\Delta = 10.04' \Delta T$



P.T. Fd P.K @ surface

3.6' RT. of PAV'T

6.2' TO RT. EP

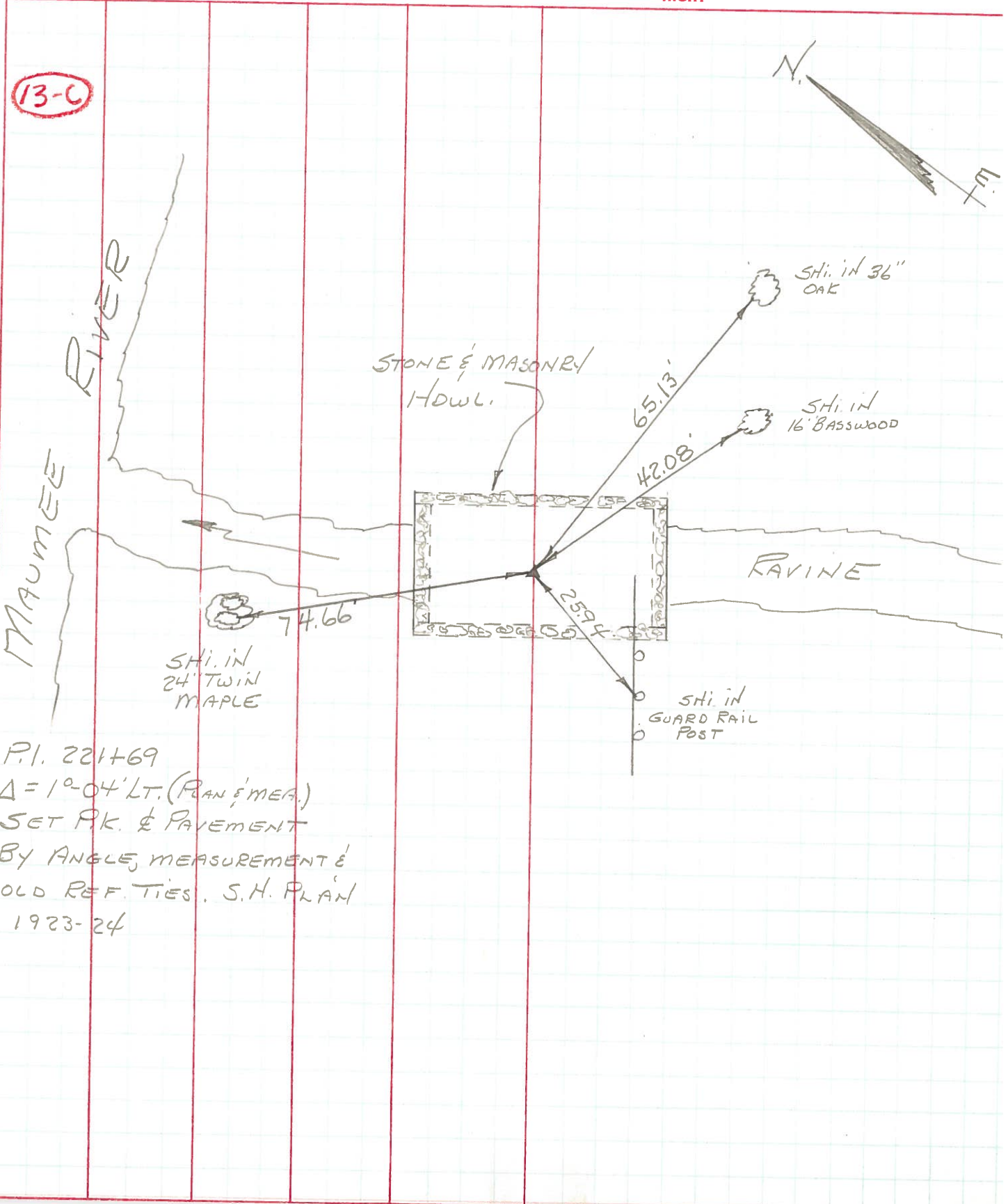
12.6' TO LT. EP

SLM = 320 + 58

PERSONNEL	TITLE	PERSONNEL	TITLE
BURNSIDE			
SMITH			
BOWERS			
KIOWSKI			

COUNTY WOOD DATE 8-29-72  
 S. R. 65 WEATHER CLEAR  
 SEC. WASHINGTON TWP TEMP. +80°

DESCRIPTION ESTABLISH P.I. LEFT CENTER LINE RIGHT JOB NO.



P.I. 221+69  
 $\Delta = 1^{\circ}04' \text{ LT. (PLAN \& MEAS.)}$   
 SET P.K. & PAVEMENT  
 BY ANGLE, MEASUREMENT &  
 OLD REF. TIES. S.H. PLAN  
 1923-24