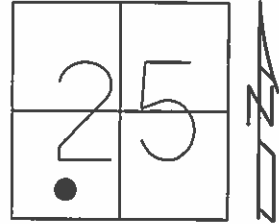


O.D.O.T. DISTRICT 2 SURVEY OFFICE (USE ONLY)

PERSONNEL	REFERENCE NO. <u>13 D</u>	SHEET <u>11</u> OF <u>63</u>
NOTES <u>RHOADES</u>	DATE <u>4/20/15</u>	ROUTE <u>SR 65</u>
H.C. <u>WESTFALL</u>	WEATHER <u>RAIN</u>	COUNTY <u>WOOD</u>
R.C. <u>O'DONNELL</u>	TEMP. <u>60°</u>	TOWNSHIP <u>WASHINGTON</u>
<u>LEU</u>		SECTION <u>25</u>
		T <u>6</u> N R <u>9</u> E

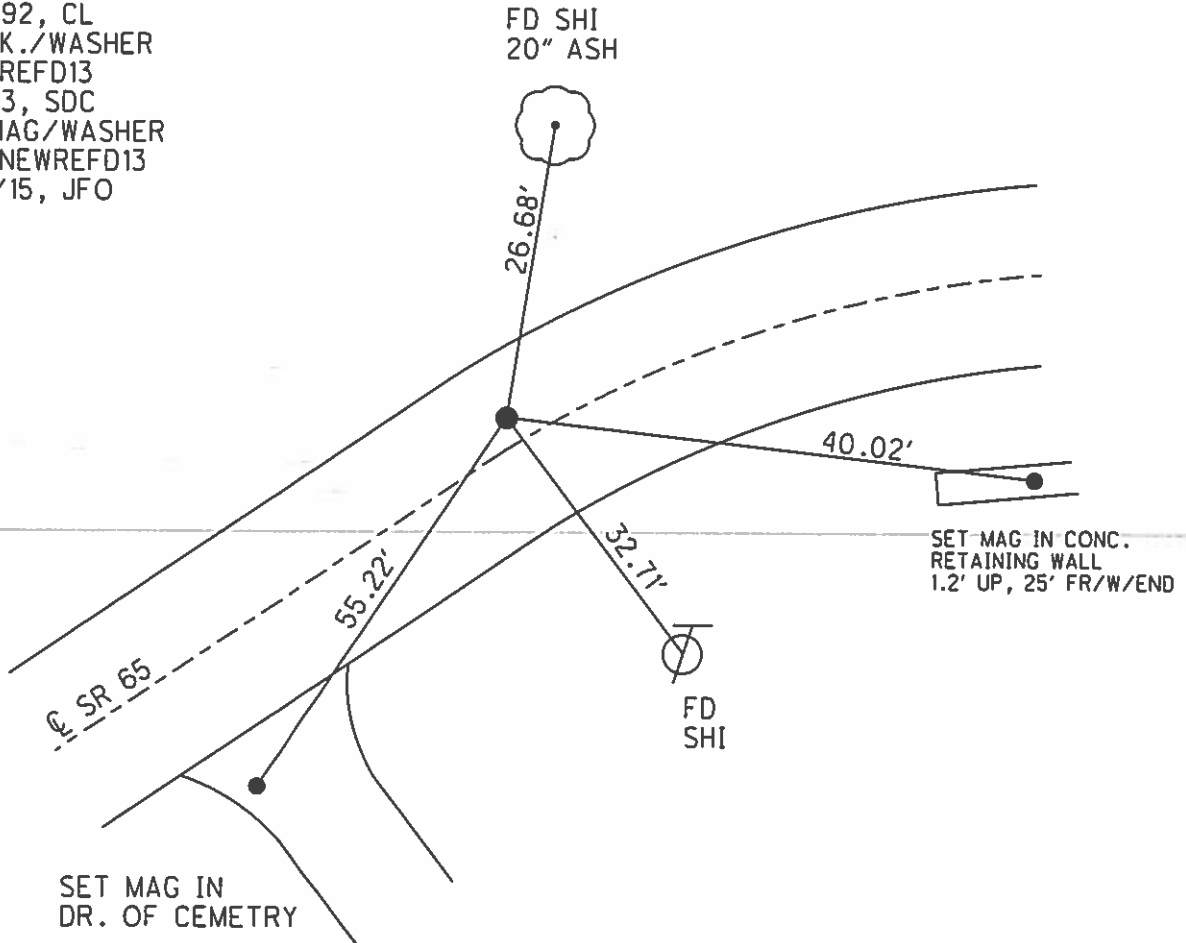
TYPE MONUMENT P.K./WASHER
 ON SURFACE - ~~BELOW~~ ON
 LEFT - PAV'T - ~~RIGHT~~ 3.7'
6.3' TOLT EDGE PAVEMENT
 S.L.M. 323+53.54



Grid: Northing: 650609.479 Easting: 1616998.379

RECORD: P.C.
 STA. 323+03

- FD P.K./WASHER
- 5/13/04
- SET P.K./WASHER
- 8/31/92, CL
- FD P.K./WASHER
- GPS, REFD13
- 8/5/13, SDC
- SET MAG/WASHER
- GPS, NEWREFD13
- 7/20/15, JFO



O.D.O.T. DISTRICT 2 SURVEY OFFICE

PERSONNEL

REFERENCE NO. 13-D SHEET 4 OF 34

NOTES BARNHISEL

H.C. Loehrke

R.C. CurTIS

DATE 5/13/04
~~7-13-92~~

WEATHER Cloudy

TEMP. +65°

ROUTE 65

COUNTY Wood

TOWNSHIP WASHINGTON

SECTION 25

T 6 N R 9 E

P.C.

P.I. 13-E

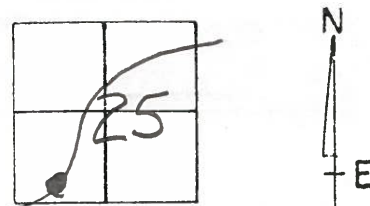
TYPE MONUMENT P.K. + WASHER P.K. + WASHER

ON SURFACE - ~~BELOW~~ yes yes

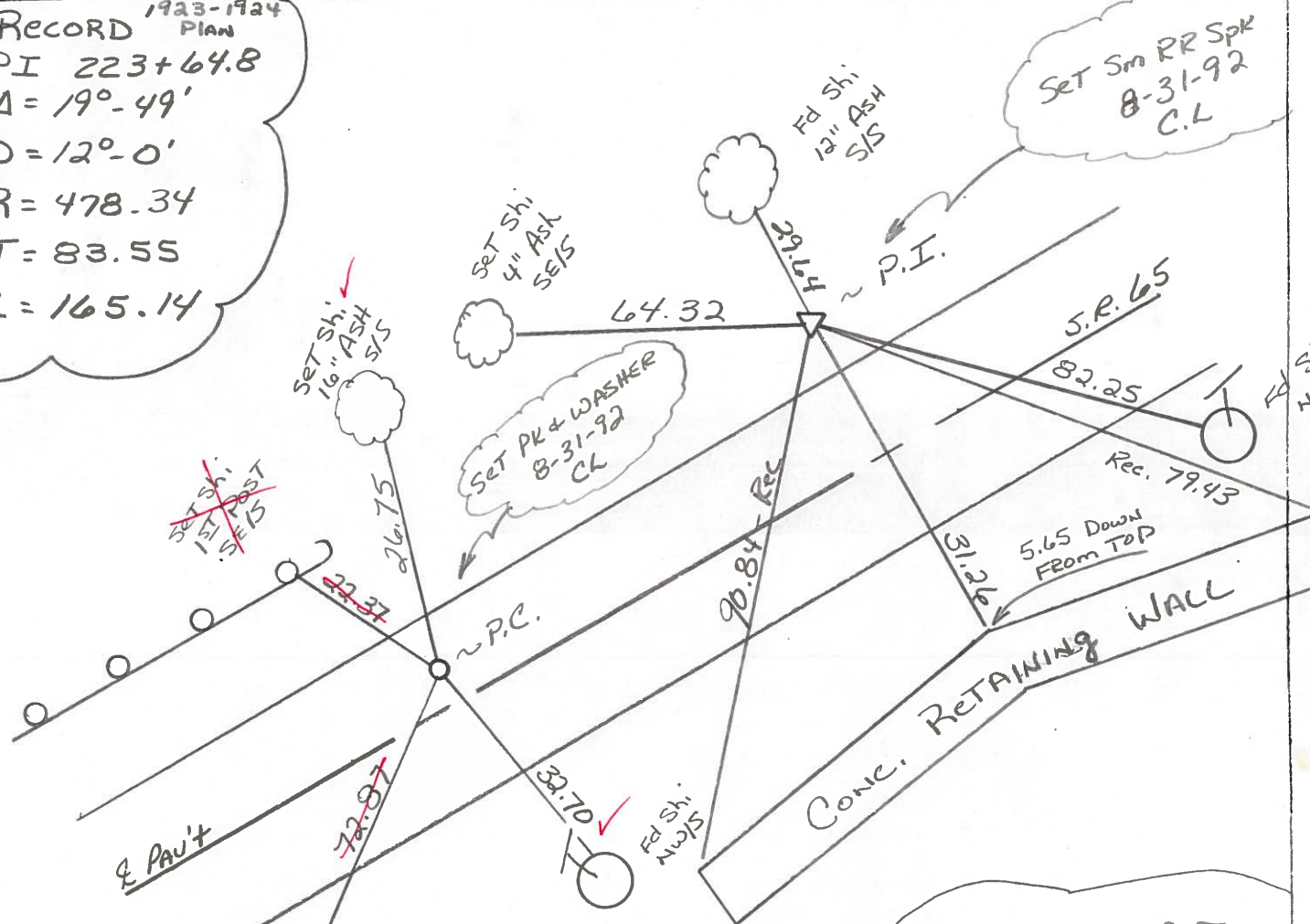
LEFT-☉ PAV'T. - ~~RIGHT~~ 3.6 13.8

6.3 TO LT EDGE PAVEMENT 3.8 LT OF LT Edge

S.L.M. 323+03 323+85



Record ¹⁹²³⁻¹⁹²⁴ Plan
 PI 223+64.8
 $\Delta = 19^{\circ}-49'$
 $D = 12^{\circ}-0'$
 $R = 478.34$
 $T = 83.55$
 $L = 165.14$



NOTE: USED P.I.
 FOR ALIGNMENT @
 BRIMHART ROAD PROJECT
 P.I. STA: 324+49.34

Preventive Maintenance
 Microsurfaced 2004
 Existing Point Uncovered
 Date 8/9/04 MC

O.D.O.T. DISTRICT 2 SURVEY OFFICE

PERSONNEL

REFERENCE NO. 13-D SHEET 4 OF 36

NOTES BARNHISEL

H.C. Lochrke

R.C. CURTIS

DATE 7-13-92

WEATHER Cloudy

TEMP. +65°

ROUTE 65

COUNTY WOOD

TOWNSHIP WASHINGTON

SECTION 25

T. 6 N. R. 9 E

P.C.

P.I.

13-D

TYPE MONUMENT P.K. + WASHER

P.K. + WASHER

13-E

ON SURFACE - ~~YES~~ YES

YES

LEFT - 0 PAV'T. - ~~3.6~~ 3.6

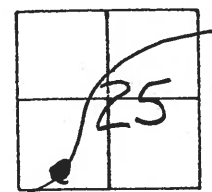
13.8

6.3 TO LT EDGE PAVEMENT

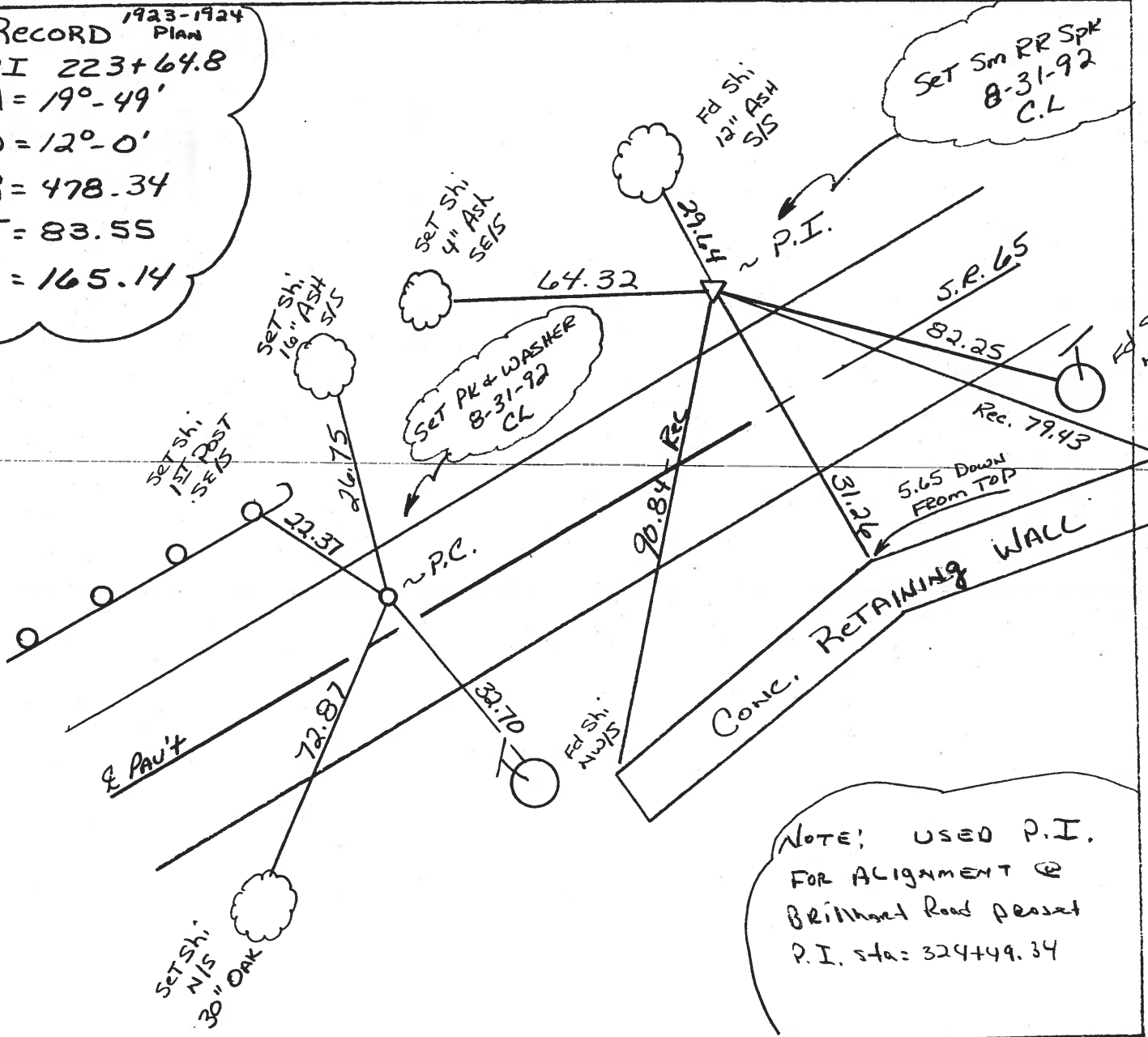
3.8 LT OF LT Edge

S.L.M. 323+03

323+85



Record 1923-1924
Plan
PI 223+64.8
A = 19°-49'
D = 12°-0'
R = 478.34
T = 83.55
L = 165.14



NOTE: USED P.I.
FOR ALIGNMENT @
BRINNET ROAD PRESENT
P.I. STA: 324+49.34

County Wood S.R. 65

Date 4-2-84

Township WASHINGTON

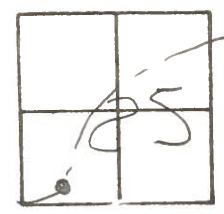
Weather cloudy

Section 25

Temp. 40°

T6N, R9E

Personnel HOFFMAN
LOEMBLE
HOUSEHOLDER H.C.
BARNHISEL R.C.



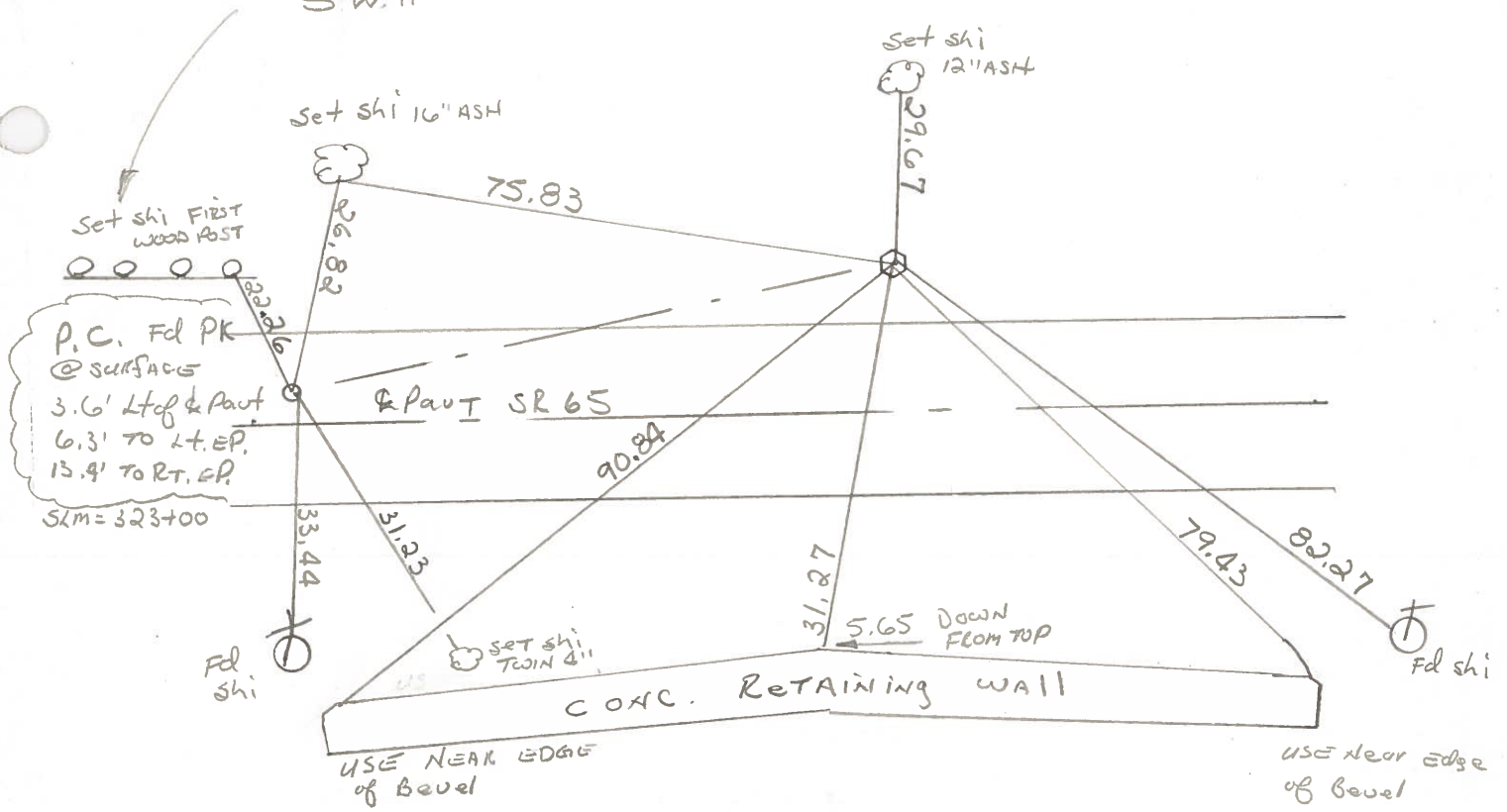
Fd R.R. SPK @ SURFACE - BENT.
 3.5' N. of Lt. EP.
 13.8' Lt. of & Pavt

P.I. SLM 323+86

13-D

13-E

SET PK/WASHER
 10-4-84
 S.W.H.



Record: 1923-1924 plan Curve DATA

P.I. STA 323+64.8

$\Delta = 19^\circ - 49'$

$D = 12^\circ - 0'$

$R = 478.34$

$T = 83.55$

$L = 165.14$