

O.D.O.T. DISTRICT 2 SURVEY OFFICE (USE ONLY)

PERSONNEL

REFERENCE NO. 13 E

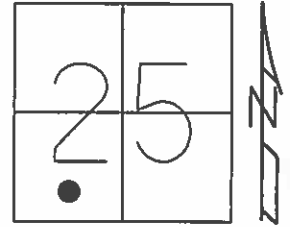
SHEET 12 OF 63

NOTES RHOADES
 H.C. WESTFALL
 R.C. O'CONNELL
LEU

DATE 4/20/15
 WEATHER RAIN
 TEMP. 60°

ROUTE SR 65
 COUNTY WOOD
 TOWNSHIP WASHINGTON
 SECTION 25
T 6 N R 9 E

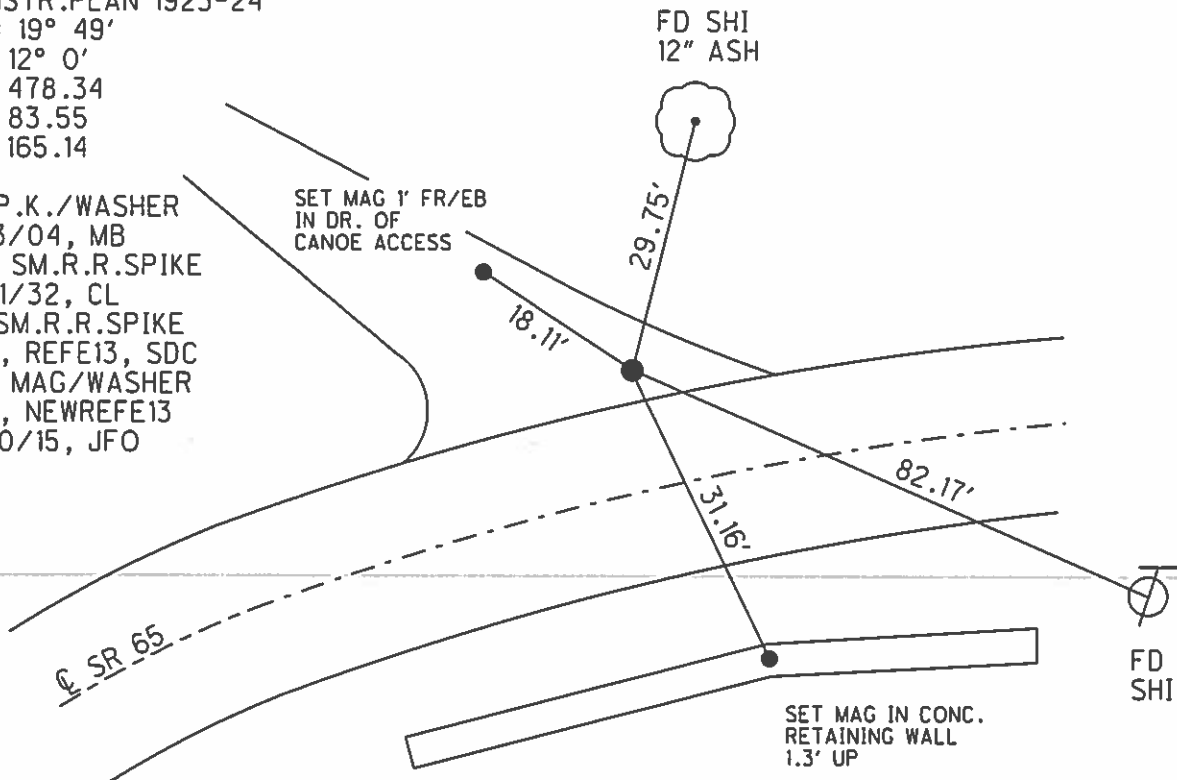
TYPE MONUMENT P.K./WASHER
 ON SURFACE - ~~BELOW~~ ON
 LEFT - PAV'T - ~~RIGHT~~ 13.8'
3.8' LT TOLT EDGE PAVEMENT
S.L.M. 324+38.88



Grid: Northing: 650657.997 Easting: 1617068.433

RECORD: P.I.
 STA. 223+64.8
 CURVE DATA FROM
 CONSTR.PLAN 1923-24
 $\Delta = 19^\circ 49'$
 $D = 12^\circ 0'$
 $R = 478.34$
 $T = 83.55$
 $L = 165.14$

FD P.K./WASHER
 5/13/04, MB
 SET SM.R.R.SPIKE
 8/31/32, CL
 FD SM.R.R.SPIKE
 GPS, REFE13, SDC
 SET MAG/WASHER
 GPS, NEWREFE13
 7/20/15, JFO



O.D.O.T. DISTRICT 2 SURVEY OFFICE

PERSONNEL

REFERENCE NO. 13-D SHEET 4 OF 34

NOTES BARNHISEL

5/13/04

H.C. Lochrke

DATE 7-13-92

ROUTE 65

R.C. CURTIS

WEATHER Cloudy

COUNTY Wood

TEMP. +65°

TOWNSHIP WASHINGTON

SECTION 25

P.C.

P.I.

13-E

T6 N R 9 E

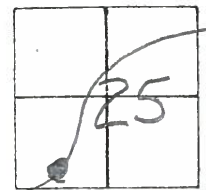
TYPE MONUMENT P.K. + WASHER P.K. + WASHER

ON SURFACE - BELOW YES YES

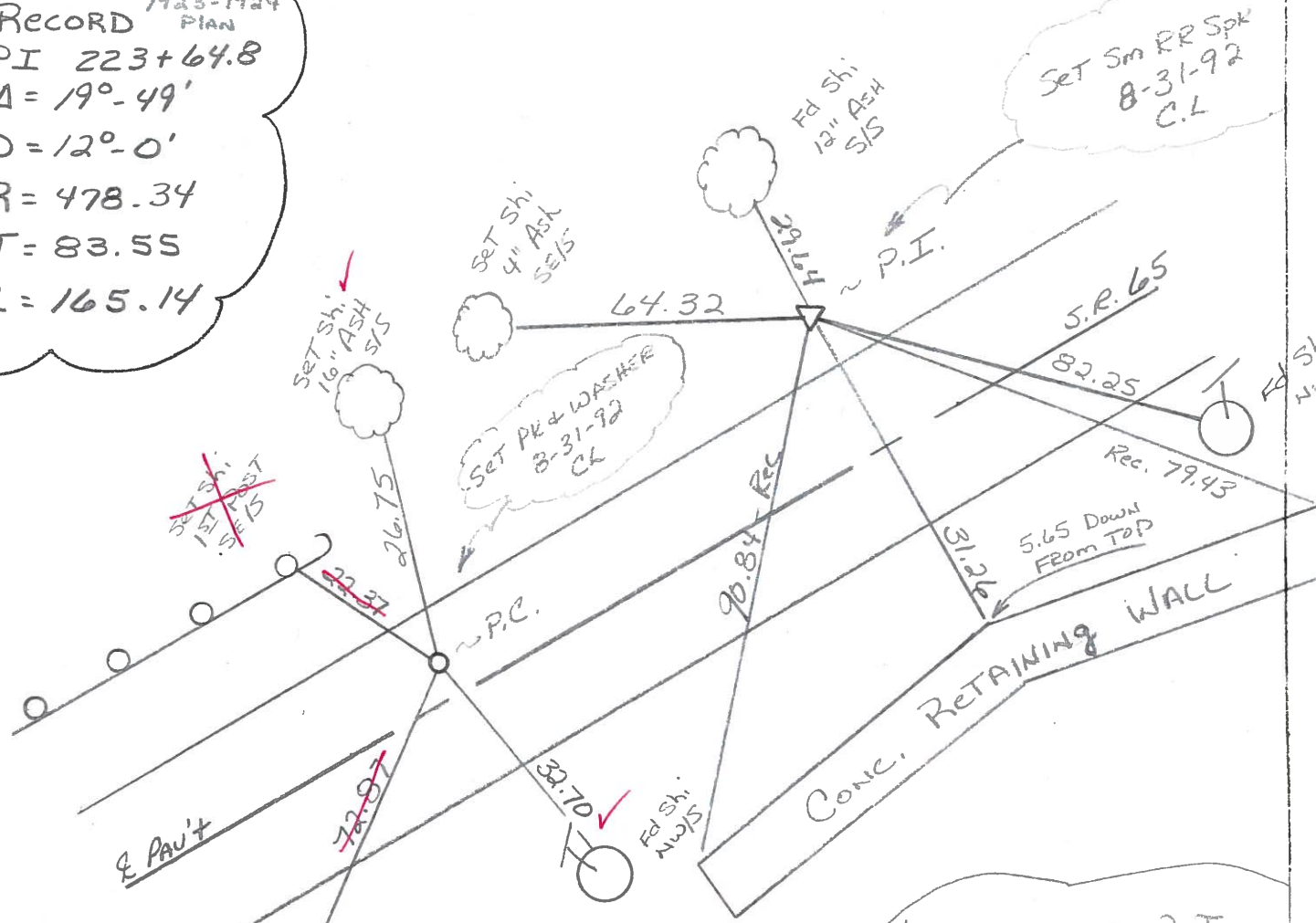
LEFT- & PAV'T. - RIGHT 3.6 13.8

6.3 TO LT EDGE PAVEMENT 3.8 LT OF LT Edge

S.L.M. 323+03 323+85



RECORD ¹⁹²³⁻¹⁹²⁴ PLAN
 PI 223+64.8
 $\Delta = 19^{\circ}-49'$
 $D = 12^{\circ}-0'$
 $R = 478.34$
 $T = 83.55$
 $L = 165.14$



NOTE: USED P.I. FOR ALIGNMENT @ BRIMMERT ROAD PROPOSED P.I. STA: 324+49.34

Preventive Maintenance
 Microsurfaced 2004
 Existing Point Uncovered
 Date 8/9/04 MC

O.D.O.T. DISTRICT 2 SURVEY OFFICE

PERSONNEL

REFERENCE NO. 13-D SHEET 4 OF 34

NOTES BARNHISEL

H.C. Loehrke

R.C. CURTIS

DATE 7-13-92

WEATHER Cloudy

TEMP. +65°

ROUTE 65

COUNTY WOOD

TOWNSHIP WASHINGTON

SECTION 25

T. 6 N. R. 9 E

P.C.

P.I.

13-D

TYPE MONUMENT P.K. + WASHER

P.K. + WASHER

13-E

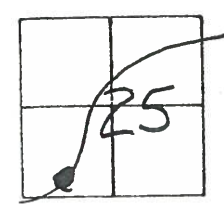
ON SURFACE - ~~NO~~ YES YES

LEFT - 0 PAV'T. - ~~NO~~ 3.6 13.8

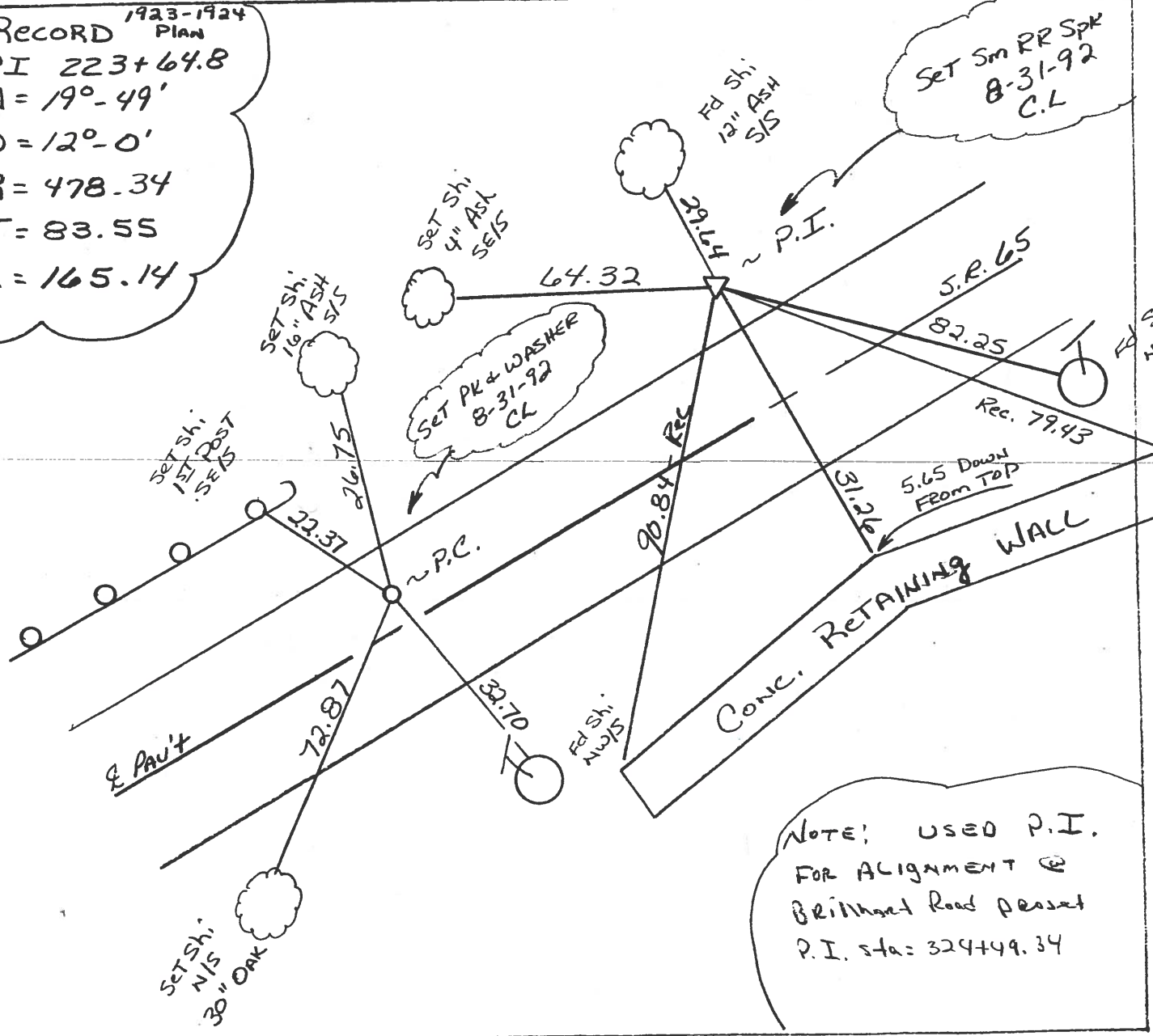
6.3 TO LT EDGE PAVEMENT 3.8 LT OF LT Edge

S.L.M. 323+03

323+85



RECORD ¹⁹²³⁻¹⁹²⁴ Plan
 P.I. 223+64.8
 $\Delta = 19^\circ - 49'$
 $D = 12^\circ - 0'$
 $R = 478.34$
 $T = 83.55$
 $L = 165.14$



NOTE: USED P.I. FOR ALIGNMENT @ BRIMMERT ROAD PRESET P.I. STA: 324+49.34

County Wood S.R. 65

Date 4-2-84

Township WASHINGTON

Weather cloudy

Section 25

Temp. 40°

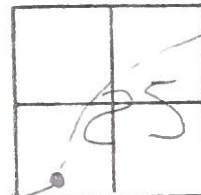
T6N, R9E

Personnel HOFFMAN

LOENHRES

HOUSEHOLDER H.C.

BURNHISEL R.C.



Fd R.R. SPR @ SURFACE - BENT.

P.I. SLM 323+86

3.5' N. of Lt. EP.

13.8' Lt. of & part

13-D

13-E

SET PK/WASHER

10-4-84

S.W.H.

Set shi 16" ASH

Set shi 12" ASH

Set shi First
WOOD POST

26.83
26.83

75.83

29.67

P.C. Fd PK
@ SURFACE

3.6' Lt. of part

6.3' to Lt. EP.

13.4' to Rt. EP.

SLM = 323+00

R PART SR 65

90.84

33.44

31.23

31.27

5.65
DOWEL
FROM TOP

79.43

82.27

Fd shi

SET shi
TOP OF

Fd shi

USE NEAR EDGES
of base

USE NEAR EDGE
of base



Record: 1923-1924 PLAIN CURVE DATA

P.I. STA 223+64.8

$\Delta = 19^\circ - 49'$

$D = 12^\circ - 0'$

$R = 478.39$

$T = 83.55$

$L = 165.14$

PERSONNEL TITLE PERSONNEL TITLE

BURNSIDE
SMITH

COUNTY WOOD

DATE 10-26-72

S. R. 65

WEATHER CLEAR

SEC. WASHINGTON TWP

TEMP. +34°

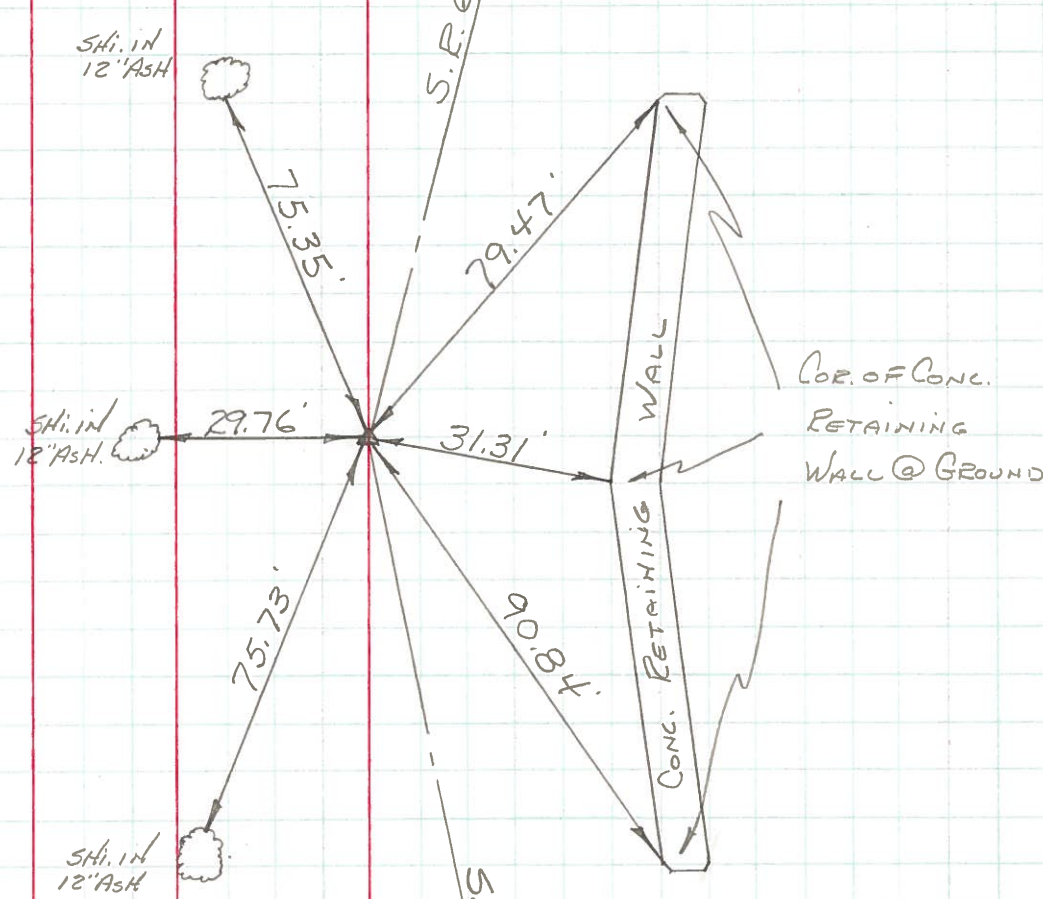
DESCRIPTION LEFT CENTER LINE RIGHT JOB NO.

13-E

P.I. 223+64.8

FOUND R.P. SPK.
3.5' N. OF N. EDGE
OF PAVEMENT

CURVE DATA
FROM PLAN DATED
1923 - 24
P.I. STA. 223+64.8
 $\Delta = 19^{\circ}49'$
 $D = 12^{\circ}0'$
 $R = 478.34$
 $T = 83.55$
 $L = 165.14$



PERSONNEL TITLE PERSONNEL TITLE

COUNTY Wood. DATE May 2, 1969

S. R. #65 WEATHER Clear.

SEC. SR#235 to SE#582 TEMP. 55°

DESCRIPTION Ties to Control points (State & Private) JOB NO. _____

LEFT CENTER LINE RIGHT

