

O.D.O.T. DISTRICT 2 SURVEY OFFICE

PERSONNEL _____

REFERENCE NO. 14-D-PC

SHEET 11 OF 11

NOTES BARNHISEL

5/14/04

H.C. MOSEL

DATE 9-25-00

ROUTE 65

R.C. CANTERBURY

WEATHER cloudy

COUNTY WOOD

TEMP. +55°

TOWNSHIP WASHINGTON

SECTION 25

T6 N R 9 E

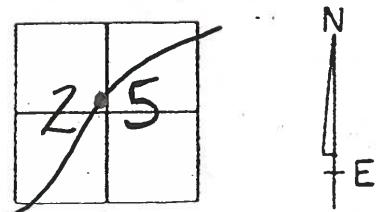
TYPE MONUMENT ~~SET~~ ^{Fd.} PK/WASHER _____

ON SURFACE - ~~BELOW~~ YES _____

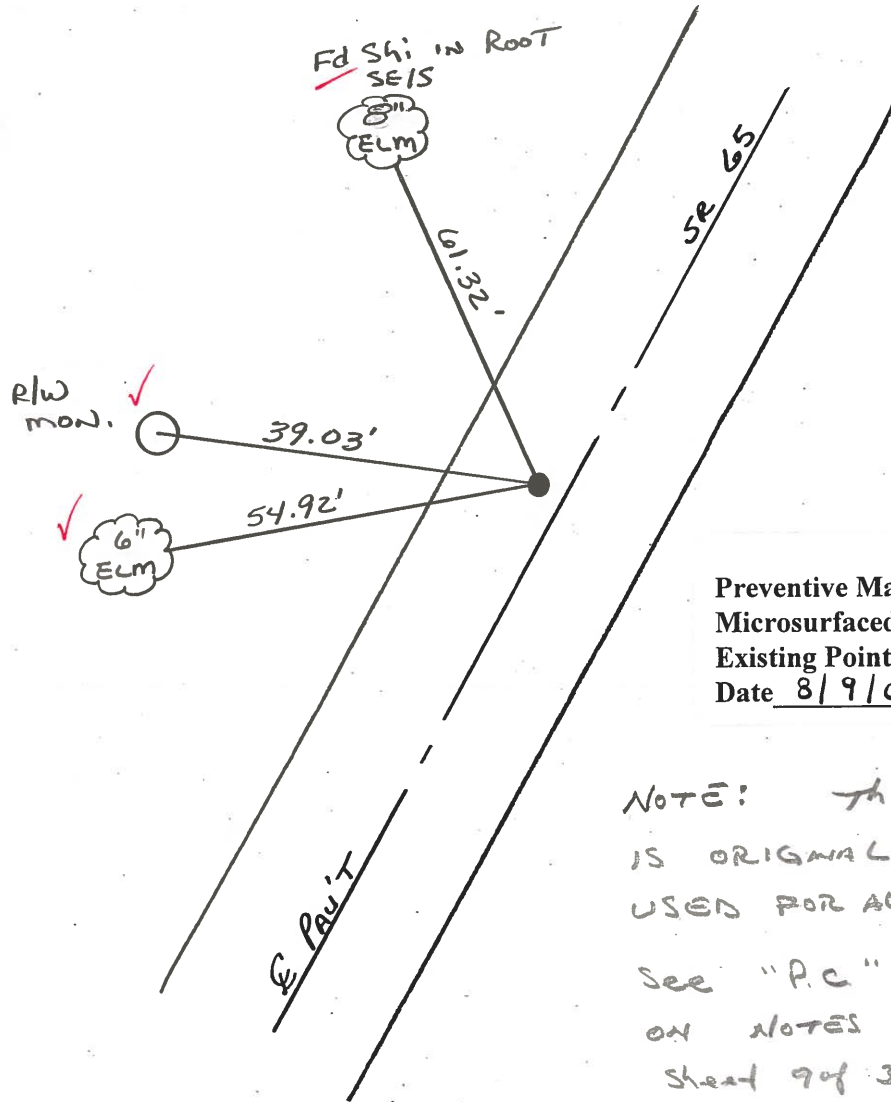
LEFT- & PAV'T. - ~~RIGHT~~ 2.0' _____

2.7' TO LT EDGE PAVEMENT _____

S.L.M. PC = 354+12.86 _____



PC



Preventive Maintenance
 Microsurfaced 2004
 Existing Point Uncovered
 Date 8/9/04 MC

NOTE: This point
 IS ORIGINAL P.C.
 USED FOR ALIGNMENT.
 See "P.C." sta 254+28.4
 ON NOTES dated 7-15-92
 Sheet 9 of 36.

O.D.O.T. DISTRICT 2 SURVEY OFFICE

PERSONNEL

REFERENCE NO. 14-D-PC SHEET 11 OF 11

NOTES BARNHISEL

H.C. MOSEK

R.C. CANTERBURY

DATE 9-25-00

WEATHER cloudy

TEMP. +55°

ROUTE 65

COUNTY WOOD

TOWNSHIP WASHINGTON

SECTION 25

T6 N R 9 E

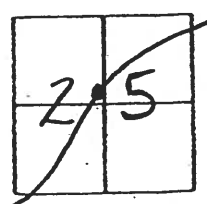
TYPE MONUMENT "SET" PK/WASHER

ON SURFACE - ~~BELOW~~ yes

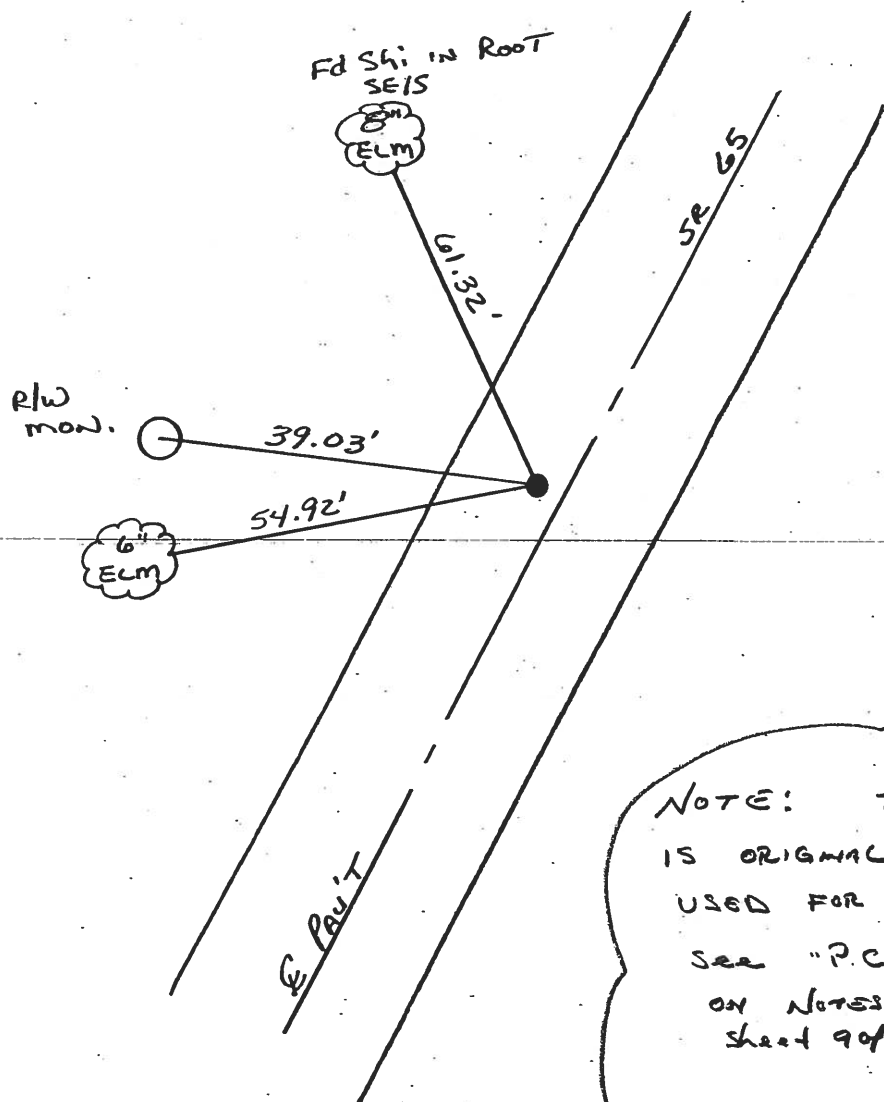
LEFT - E PAV'T. - ~~RIGHT~~ 2.0'

2.7' TO LT EDGE PAVEMENT

S.L.M. PC = 354+12.86



PC



NOTE: THIS POINT IS ORIGINAL P.C. USED FOR ALIGNMENT. SEE "P.C." Sta 354+12.86 ON Notes dated 7-15-92 sheet 9 of 36