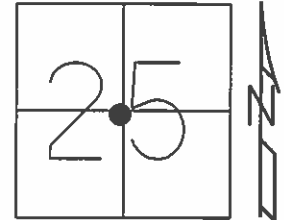


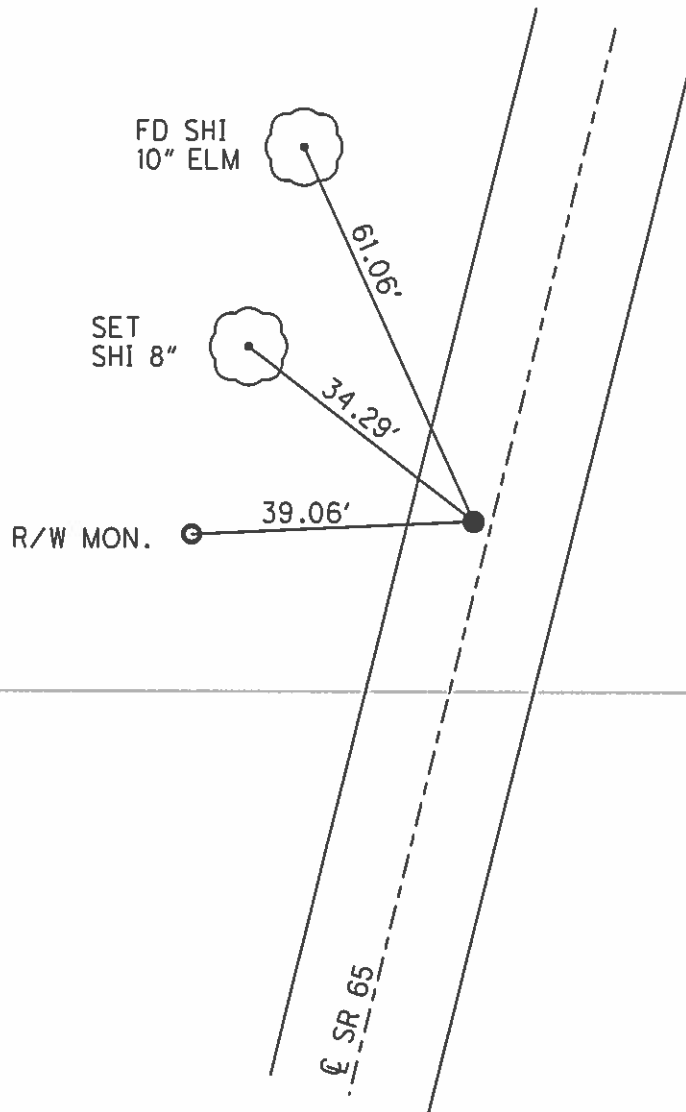
O.D.O.T. DISTRICT 2 SURVEY OFFICE (USE ONLY)

PERSONNEL	REFERENCE NO. <u>14 DD</u>	SHEET <u>16</u> OF <u>63</u>
NOTES <u>RHOADES</u>	DATE <u>4/20/15</u>	ROUTE <u>SR 65</u>
H.C. <u>WESTFALL</u>	WEATHER <u>WINDY</u>	COUNTY <u>WOOD</u>
R.C. <u>O'DONNELL</u>	TEMP. <u>55°</u>	TOWNSHIP <u>WASHINGTON</u>
		SECTION <u>25</u>
		T <u>6</u> N R <u>9</u> E

TYPE MONUMENT P.K./WASHER
 ON SURFACE - ~~BELOW~~ ON
 LEFT - PAV'T - ~~RIGHT~~ 2.0'
7.7' TOLT EDGE PAVEMENT
 S.L.M. 354+54.80



Grid: Northing: 652954.999 Easting: 1618544.257



RECORD: P.C.
 STA. 254+28.4
 SET P.K. NAIL, 1972.
 STA. 354+12.86
 SET P.K./WASHER
 8/27/92, CL

FD P.K./WASHER
 9/25/00
 SET P.K./WASHER
 5/14/04, MB
 FD P.K./WASHER
 TS, REFDD14
 8/5/13, SDC
 SET MAG/WASHER
 GPS, NEWREFDD14
 7/20/15, JFO

O.D.O.T. DISTRICT 2 SURVEY OFFICE

PERSONNEL _____

REFERENCE NO. 14-C-PC

SHEET 8 OF 11

NOTES BARNHISEL

6-20-03

H.C. MOSEK

DATE 9-25-00

ROUTE 65

R.C. CANTERBURY

WEATHER cloudy

COUNTY WOOD

TEMP. +55°

TOWNSHIP WASHINGTON

SECTION 25

T6 N R 9 E

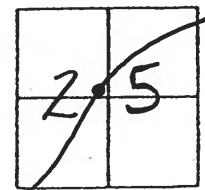
TYPE MONUMENT "SET" PK/washer Fd

ON SURFACE - ~~BELOW~~ yes

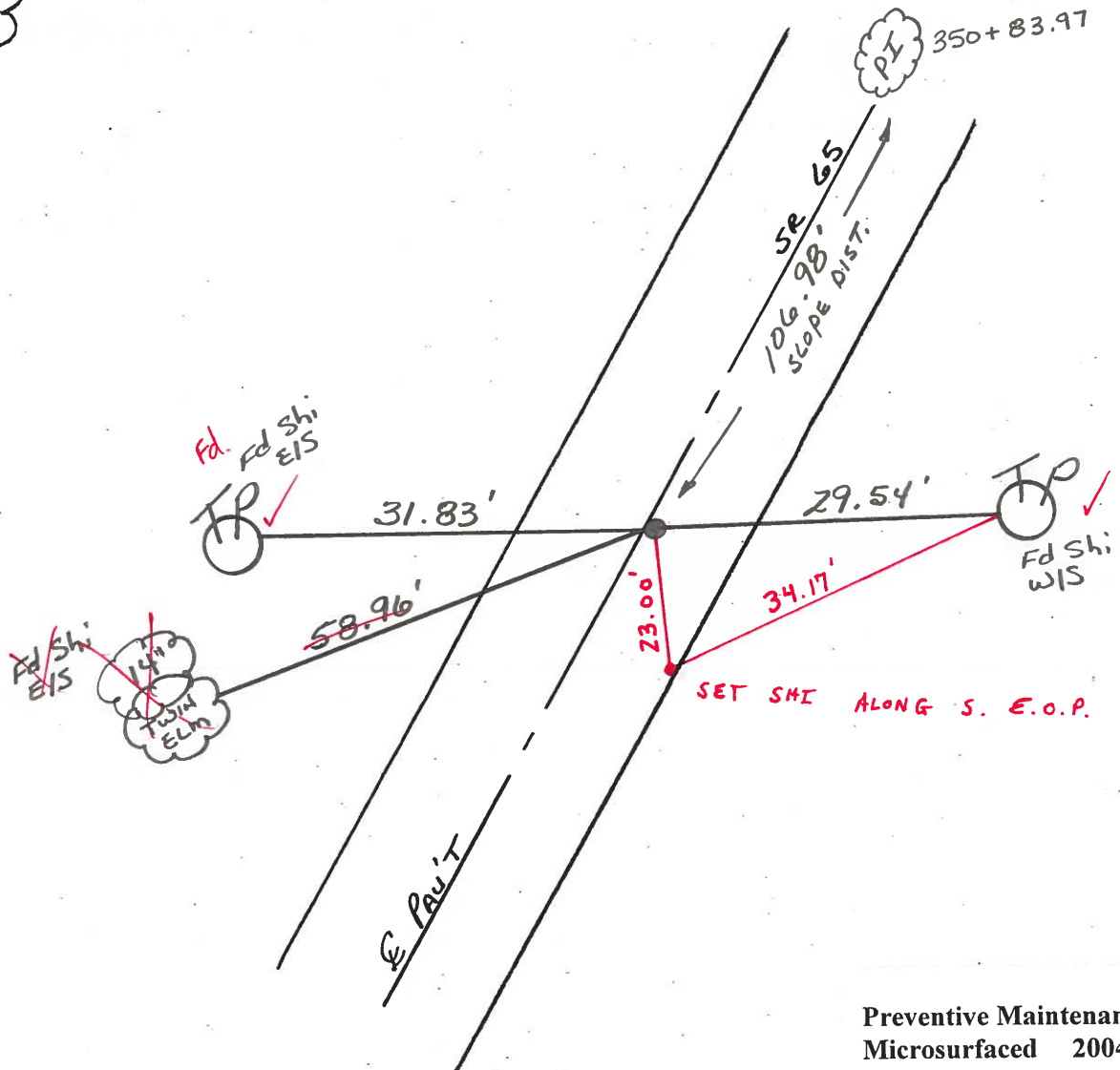
~~LEFT - & PAV'T. - RIGHT~~ 0.3'

9.3' TO LT EDGE PAVEMENT

S.L.M. PC = 349+77.03



PC



Preventive Maintenance
 Microsurfaced 2004
 Existing Point Uncovered
 Date 8/9/04 MC

O.D.O.T. DISTRICT 2 SURVEY OFFICE

PERSONNEL _____

REFERENCE NO. 14-C-PC

SHEET 8 OF 11

NOTES BARNHISEL

H.C. MOSEK

DATE 9-25-00

ROUTE 65

R.C. CANTERBURY

WEATHER cloudy

COUNTY WOOD

TEMP. +55°

TOWNSHIP WASHINGTON

SECTION 25

T6 N R 9 E

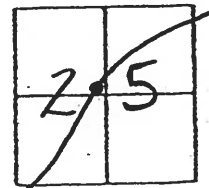
TYPE MONUMENT "Set" PK/washer

ON SURFACE - ~~BELOW~~ yes

~~LEFT~~ - E PAV'T. - RIGHT 0.3'

9.3' TO LT EDGE PAVEMENT

S.L.M. PC = 349+77.03



PC.

