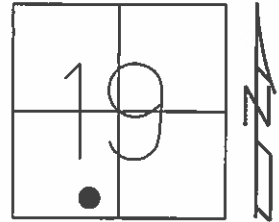


O.D.O.T. DISTRICT 2 SURVEY OFFICE (USE ONLY)

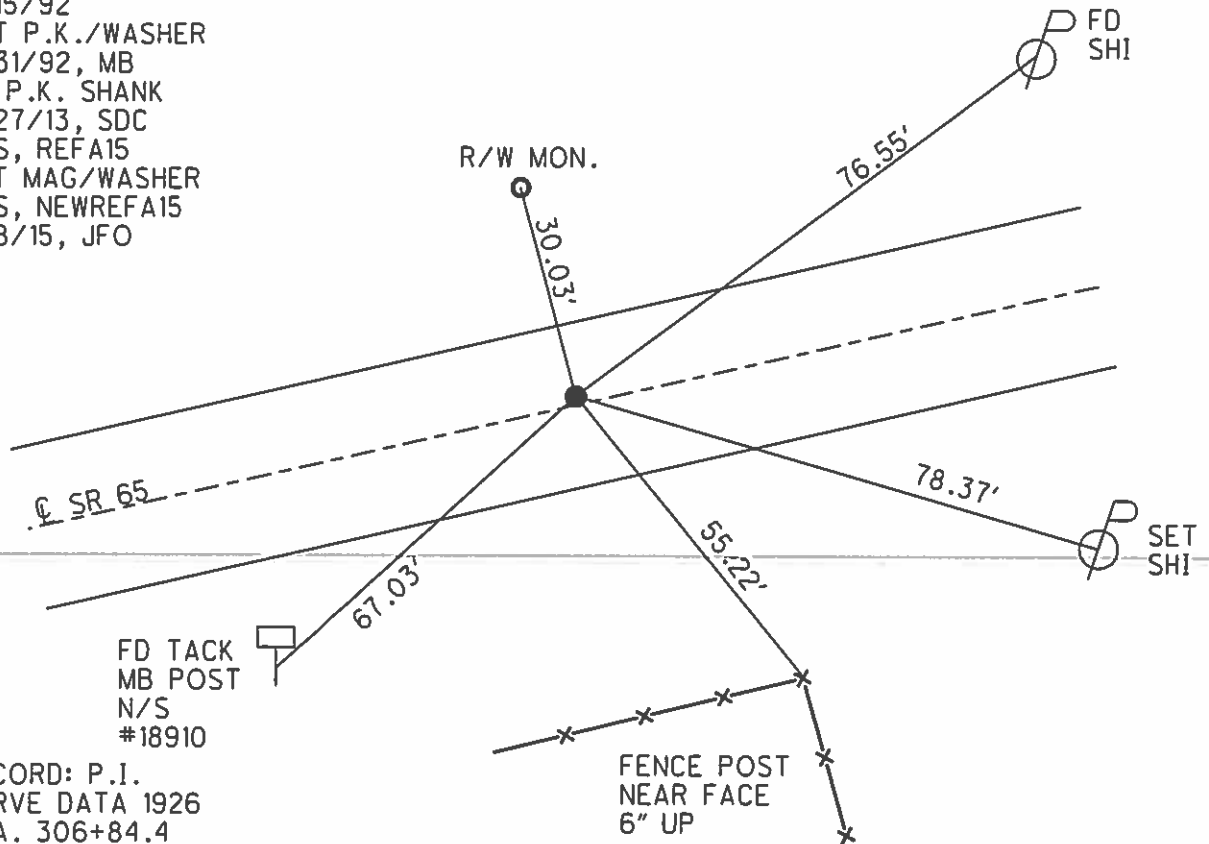
PERSONNEL	REFERENCE NO. <u>15 A</u>	SHEET <u>26</u> OF <u>63</u>
NOTES <u>LEU</u>	DATE <u>4/21/15</u>	ROUTE <u>SR 65</u>
H.C. <u>O'DONNELL</u>	WEATHER <u>WINDY</u>	COUNTY <u>WOOD</u>
R.C. <u>WESTFALL</u>	TEMP. <u>43°</u>	TOWNSHIP <u>WASHINGTON</u>
<u>RHOADES</u>		SECTION <u>19</u>
		T <u>6</u> N R <u>10</u> E

TYPE MONUMENT P.K. SHANK
 ON SURFACE - ~~BELOW~~ ON
 LEFT - PAV'T - ~~RIGHT~~ 0.8'
8.6' TOLT EDGE PAVEMENT
 S.L.M. 405+80.69



Grid: Northing: 655751.166 Easting: 1622503.700

RECORD: P.C.
 STA. 305+56.12
 SET P.K.NAIL, 1972
 FD P.K./WASHER
 7/15/92
 SET P.K./WASHER
 8/31/92, MB
 FD P.K. SHANK
 8/27/13, SDC
 GPS, REFA15
 SET MAG/WASHER
 GPS, NEWREFA15
 9/8/15, JFO



FD TACK
 MB POST
 N/S
 #18910

RECORD: P.I.
 CURVE DATA 1926
 STA. 306+84.4
 $\Delta = 10^\circ 14'$ RT
 D = $4^\circ 00'$
 R = 1432.69
 T = 128.28
 L = 255.83

O.D.O.T. DISTRICT 2 SURVEY OFFICE

PERSONNEL

REFERENCE NO. _____

SHEET 13 OF 36

NOTES BARNHISEL

5/17/04

H.C. JAN DUSEN

DATE 7-15-92

ROUTE 65

R.C. KUSZ

WEATHER RAIN

COUNTY WOOD

BURNETT

TEMP. +70°

TOWNSHIP WASHINGTON

SECTION 19

T. 6 N R. 10 E

TYPE MONUMENT P.C. ^{fd.} P.K. + WASHER P.T. ^{fd.} P.K. + WASHER

15-A

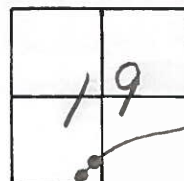
15-B

ON SURFACE - ~~BELOW~~ yes yes

LEFT-☉ PAV'T. - ~~RIGHT~~ 0.8 1.0

- TO LT EDGE PAVEMENT 8.6 8.3

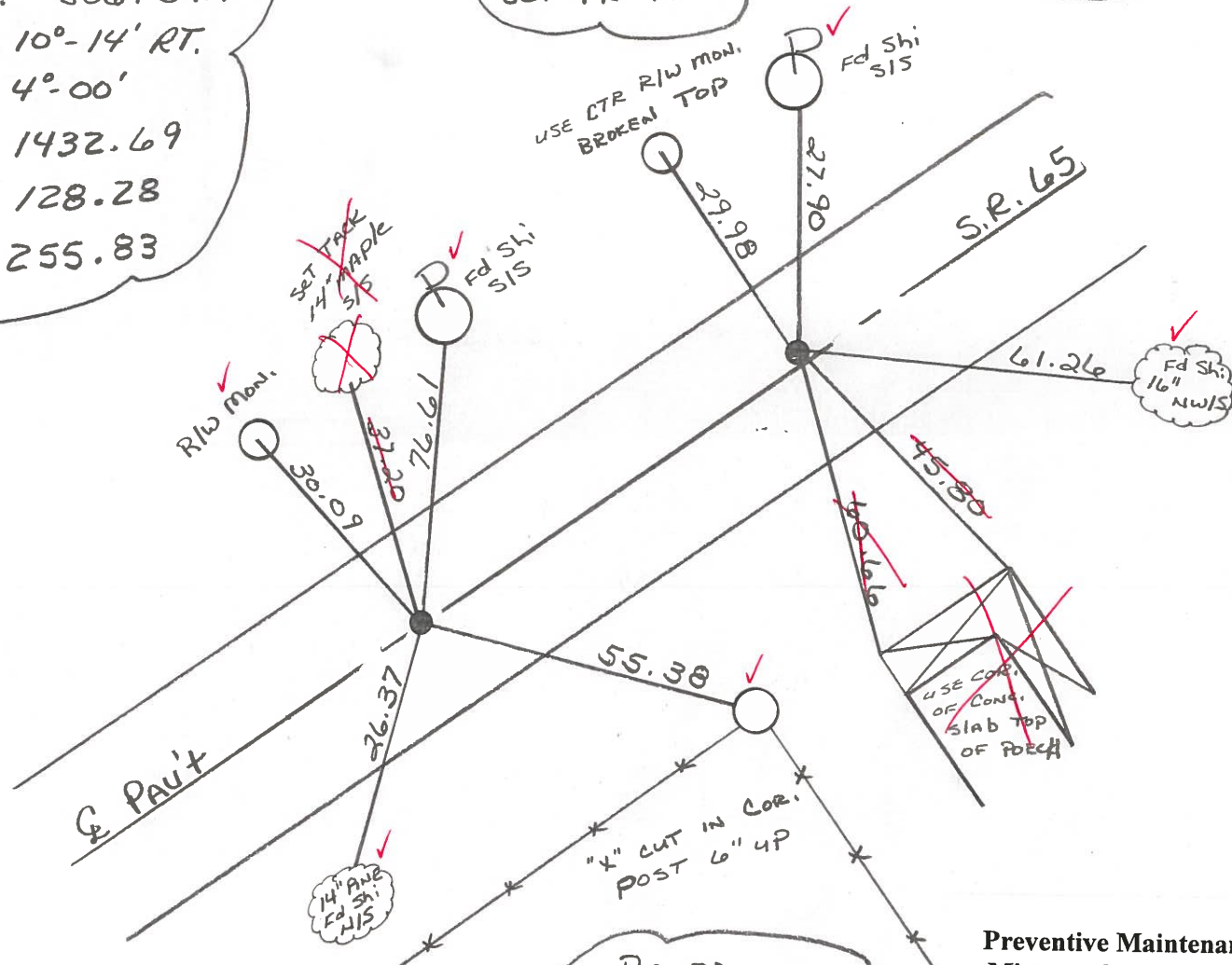
S.L.M. 404+70 407+27



Record:
 CURVE DATA 1926
 P.I. = 306+84.4
 Δ = 10°-14' RT.
 D = 4°-00'
 R = 1432.69
 T = 128.28
 L = 255.83

Record:
 P.T. = 308+11.95
 Set PK 1972

Set PK's + WASHERS
 8-31-92
 MB



Record:
 P.C. = 305+56.12
 Set PK 1972

Preventive Maintenance
 Microsurfaced 2004
 Existing Point Uncovered
 Date 8/10/04 MC

County WOOD S.R. 65

Date 4-9-84

Township WASHINGTON

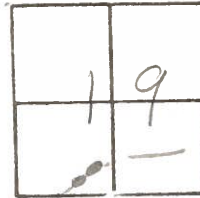
Weather Clear

Section 19

Temp. 45°

T6N, R10E

Personnel HOFFMAN



15-A

LOEHLKE

15-B

Householder H.C.

DARNHISEL R.C.

SET P.K./WASHER

@ BOTH POINTS

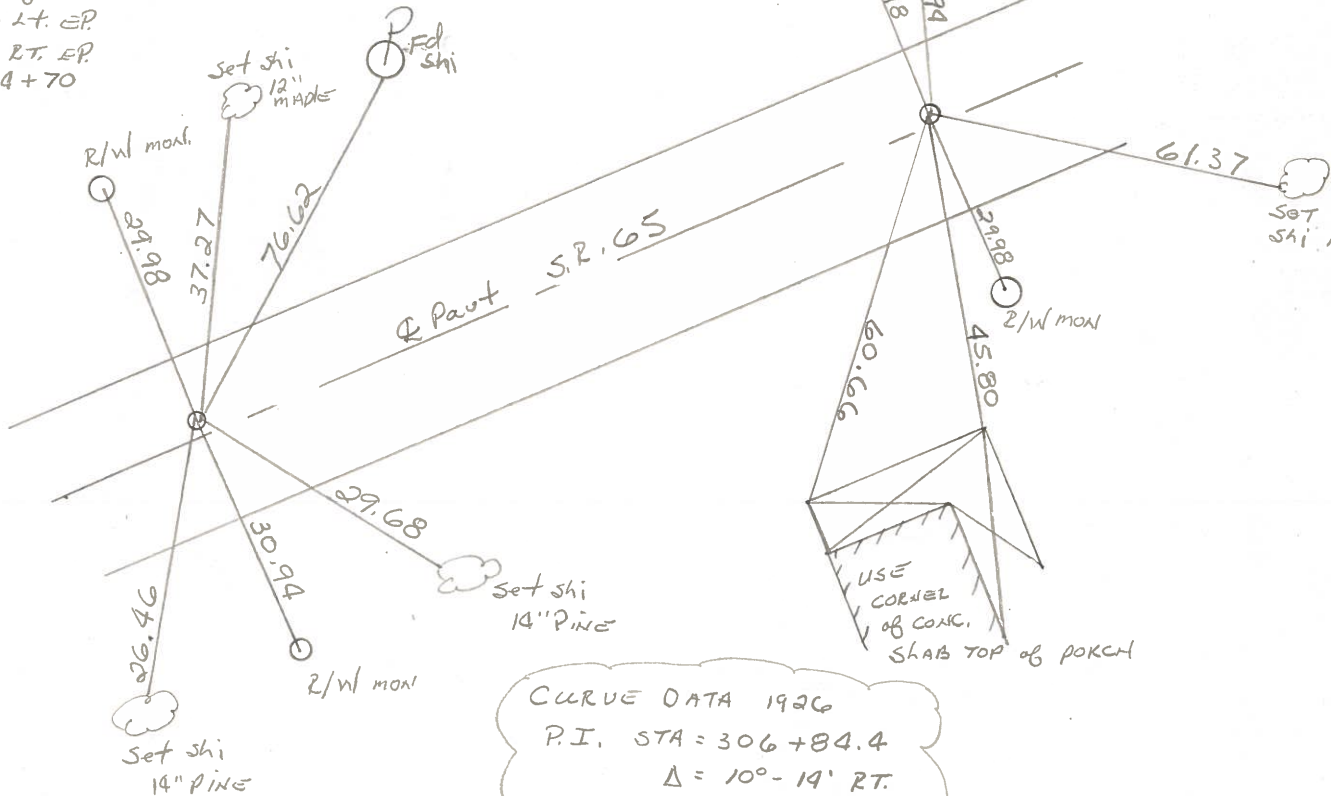
10-9-84
S.W.H.

Record;
P.T. STA 308+11.95
Set P.K. 1972

Fd P.K. @ SURFACE
1.0' Lt & part
8.3' TO Lt. EP
11.0' TO RT. EP
S.L.M. 407+27

Record;
P.C. 305+56.12
Set P.K. 1972

Fd. P.K. NAIL @ SURFACE
0.8' Lt. of & part
8.6' TO Lt. EP
11.0' TO RT. EP
S.L.M. = 404+70



CURVE DATA 1926
P.I. STA = 306+84.4
Δ = 10° - 19' RT.
D = 4° - 00'
R = 1432.69
T = 128.28
L = 255.83

PERSONNEL TITLE PERSONNEL TITLE
BURNSIDE _____
SMITH _____

COUNTY WOOD DATE 10-27-72

S. R. 65 WEATHER CLEAR

SEC. WASHINGTON TWP TEMP. +60°

DESCRIPTION ESTABLISH & REF. & CONTROL POINTS JOB NO. _____

