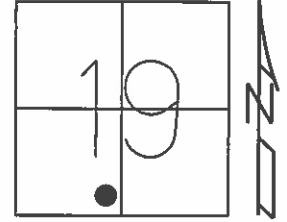


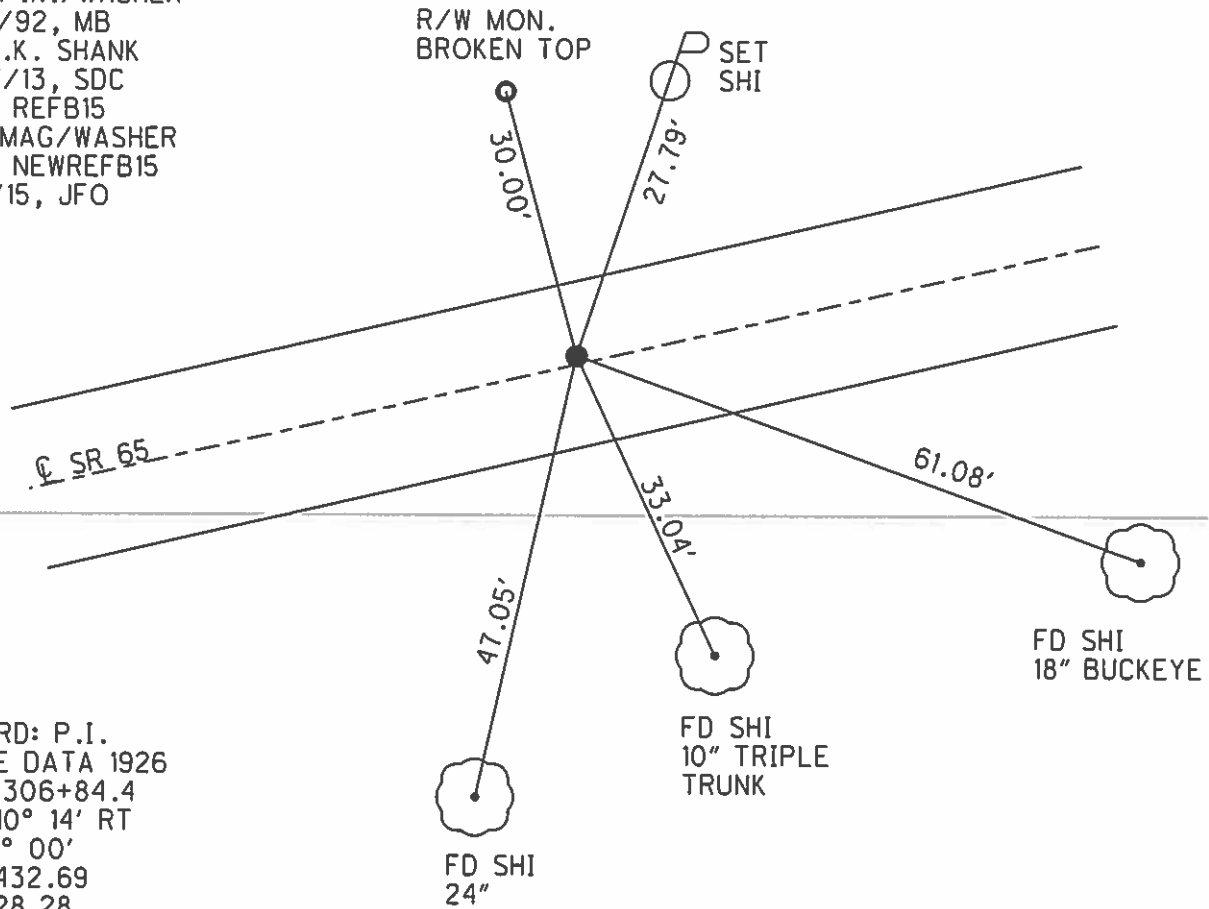
O.D.O.T. DISTRICT 2 SURVEY OFFICE (USE ONLY)

PERSONNEL	REFERENCE NO. <u>15 B</u>	SHEET <u>27</u> OF <u>63</u>
NOTES <u>LEU</u>	DATE <u>4/21/15</u>	ROUTE <u>SR 65</u>
H.C. <u>O'DONNELL</u>	WEATHER <u>WINDY</u>	COUNTY <u>WOOD</u>
R.C. <u>WESTFALL</u>	TEMP. <u>43°</u>	TOWNSHIP <u>WASHINGTON</u>
<u>RHOADES</u>		SECTION <u>19</u>
		T <u>6</u> N R <u>10</u> E

TYPE MONUMENT P.K. SHANK
 ON SURFACE - BELOW ON
 LEFT - PAV'T - RIGHT 0.8'
9.1' TOLT EDGE PAVEMENT
 S.L.M. 408+37.49
 Grid: Northing: 655821.264 Easting: 1622750.211



RECORD: P.T.
 STA. 308+11.95
 SET P.K.NAIL, 1972
 FD P.K./WASHER
 7/15/92
 SET P.K./WASHER
 8/31/92, MB
 FD P.K. SHANK
 8/27/13, SDC
 GPS, REFB15
 SET MAG/WASHER
 GPS, NEWREFB15
 9/9/15, JFO



RECORD: P.I.
 CURVE DATA 1926
 STA. 306+84.4
 $\Delta = 10^\circ 14'$ RT
 $D = 4^\circ 00'$
 $R = 1432.69$
 $T = 128.28$
 $L = 255.83$

O.D.O.T. DISTRICT 2 SURVEY OFFICE

PERSONNEL

REFERENCE NO. _____

SHEET 13 OF 34

NOTES BARNHISEL

H.C. VAN DUSEN

R.C. KUSZ

BURNETT

DATE 5/17/04

DATE 7-15-92

WEATHER RAIN

TEMP. +70°

ROUTE 65

COUNTY WOOD

TOWNSHIP WASHINGTON

SECTION 19

T. 6 N R. 10 E

TYPE MONUMENT P.C. fd. PK + WASHER P.T. fd. PK + WASHER

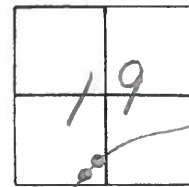
ON SURFACE - ~~BELOW~~ yes yes

LEFT- & PAV'T. - ~~RIGHT~~ 0.8 1.0

- TO LT EDGE PAVEMENT 8.6 8.3

S.L.M. 404+70 407+27

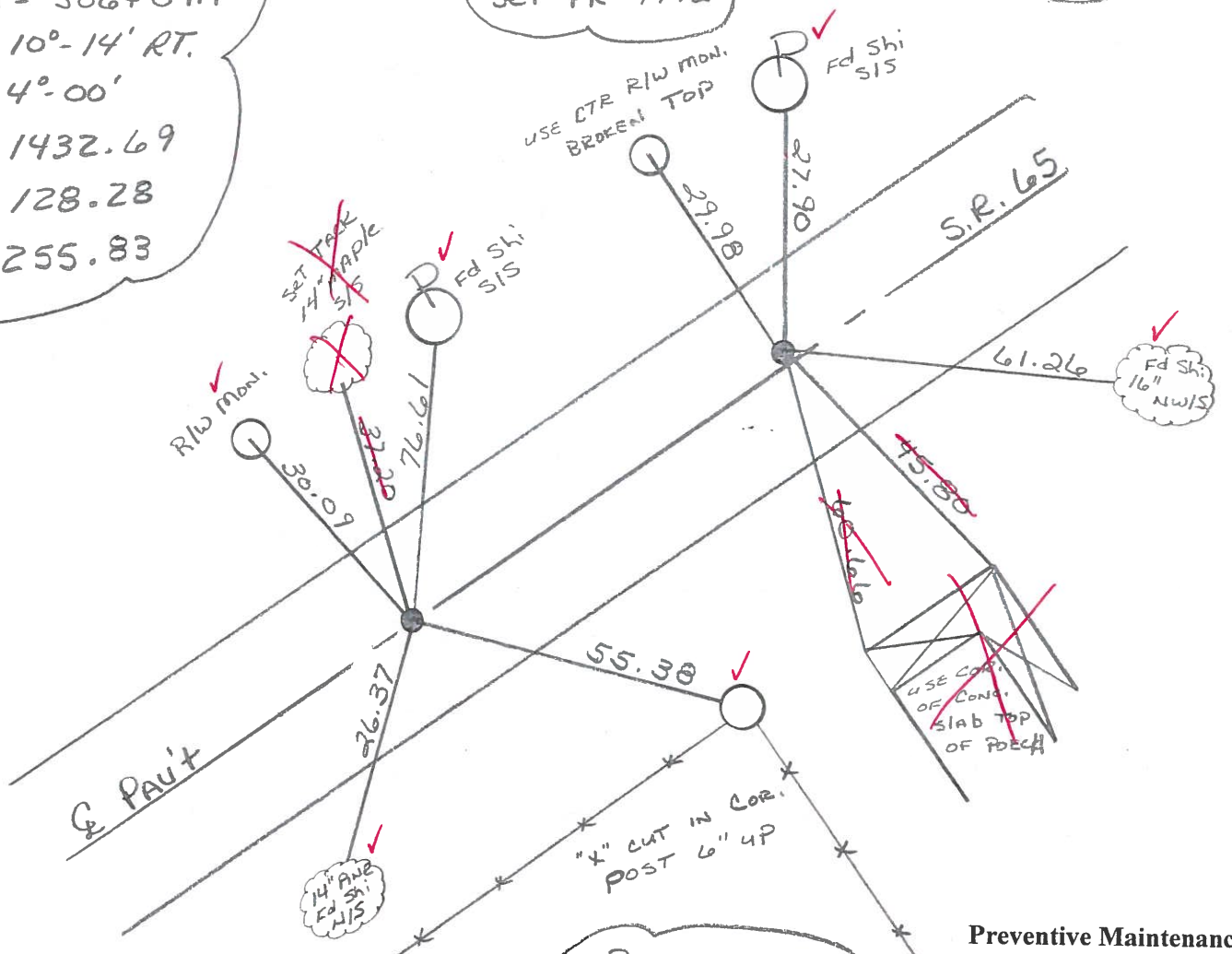
15-A
15-B



RECORD:
CURVE DATA 1926
P.I. = 306+84.4
Δ = 10°-14' RT.
D = 4°-00'
R = 1432.69
T = 128.28
L = 255.83

RECORD:
P.T. = 308+11.95
Set PK 1972

SET PK'S + WASHERS
8-31-92
MB



RECORD:
P.C. = 305+56.12
Set PK 1972

Preventive Maintenance
Microsurfaced 2004
Existing Point Uncovered
Date 8/10/04 MC

County Wood S.R. 65

Township WASHINGTON

Section 19

T6N, R10E

Personnel HOFFMAN

15-A

LOEHLKE

Householder H.C.

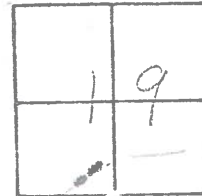
15-B

BALHISEL R.C.

Date 4-9-84

Weather Clear

Temp. 45°



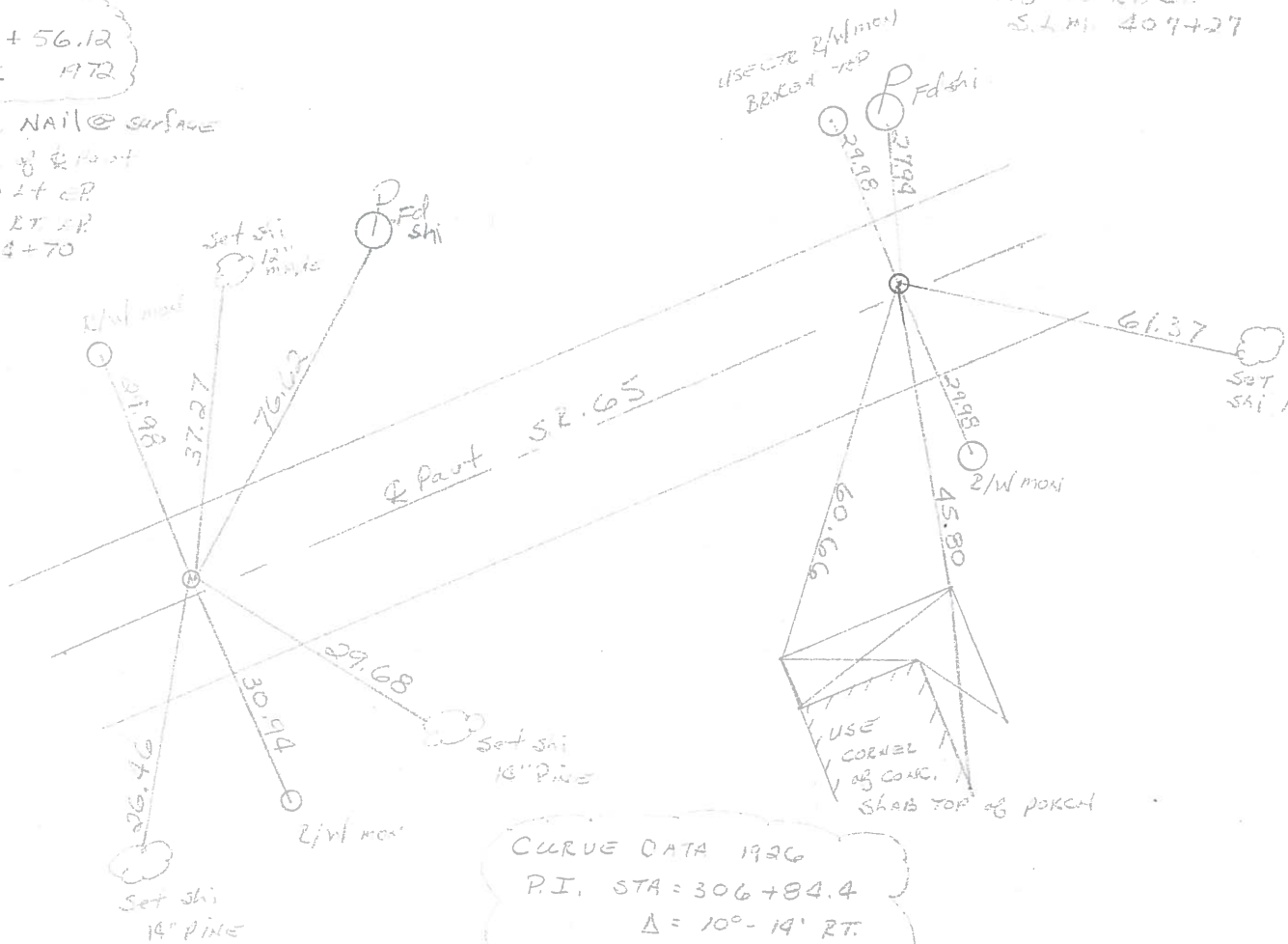
SET PK/WASHER
@ BOTH POINTS
10-9-84
E.W.H.

Record:
P.T. STA 308+11.95
Set PK. 1972

Fd. PK. @ surface
1.0' Lt & part
5.3' to Lt. EP
10.8' to Rt. EP
S.L.M. 409+27

Record:
P.C. 305+56.12
Set PK 1972

Fd. P.K. NAIL @ surface
0.8' Lt of & part
8.6' to Lt. EP
11.0' to Rt. EP
S.L.M. 404+70



CURVE DATA 1926
P.I. STA = 306+84.4
 $\Delta = 10^{\circ}-19'$ RT.
 $D = 4^{\circ}-00'$
 $R = 1432.69$
 $T = 128.28$
 $L = 255.83$

PERSONNEL TITLE PERSONNEL TITLE
BURNSIDE _____
SMITH _____

COUNTY WOOD DATE 10-27-72

S. R. 65 WEATHER CLEAR

SEC. WASHINGTON TWP TEMP. +60°

DESCRIPTION ESTABLISH & REF. & CONTROL POINTS

JOB NO. _____

LEFT CENTER LINE RIGHT

15-B

P.T. STA. 308+11.95
 SET P.K. NAIL

CURVE DATA:

PLAN OF 1926

P.I. STA. 306+84.4

$\Delta = 10^{\circ}-14'$ RT.

$D = 4^{\circ}-00'$

$R = 1432.69$

$T = 128.28$

$L = 255.83$

15-A

P.C. STA. 305+56.12
 SET P.K. NAIL

