

O.D.O.T. DISTRICT 2 SURVEY OFFICE (USE ONLY)

PERSONNEL

REFERENCE NO. 17 A

SHEET 37 OF 63

NOTES WESTFALL

DATE 4/21/15

ROUTE SR 65

H.C. O'DONNELL

WEATHER CLOUDY

COUNTY WOOD

R.C. LEU

TEMP. 30°

TOWNSHIP MIDDLETON

RHOADES

SECTION 20

T 6 N R 10 E

TYPE MONUMENT P.K./WASHER

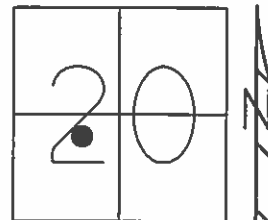
ON SURFACE - ~~BELOW~~ ON

~~LEFT~~ - PAV'T - RIGHT 1.8'

8.5' TORT EDGE PAVEMENT

S.L.M. 466+20.74

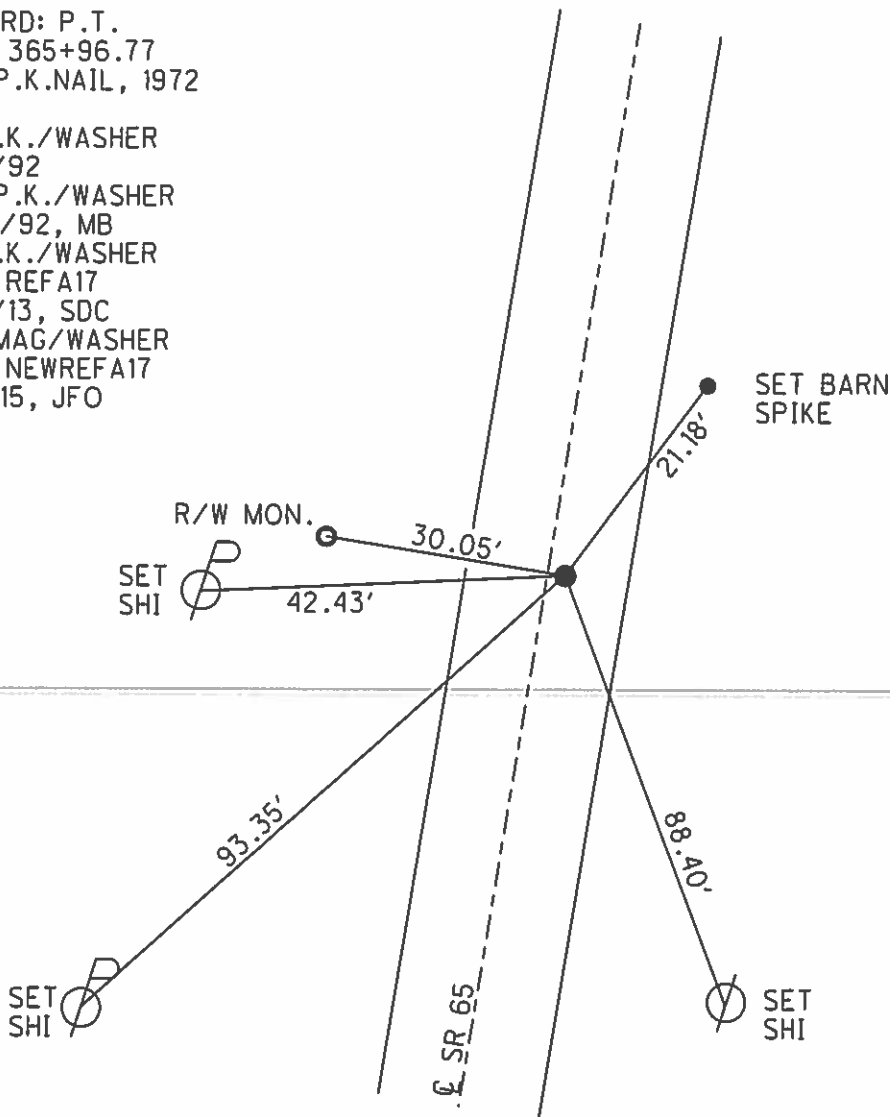
Grid: Northing: 658076.218 Easting: 1627795.954



RECORD: P.T.
STA. 365+96.77
SET P.K.NAIL, 1972

FD P.K./WASHER
7/16/92
SET P.K./WASHER
9/3/92, MB
FD P.K./WASHER
GPS, REFA17
8/16/13, SDC
SET MAG/WASHER
GPS, NEWREFA17
9/11/15, JFO

RECORD: P.I.
CURVE DATA 1926
STA. 361+20.4
 $\Delta = 51^\circ 23' \text{ LT}$
D = $5^\circ 00'$
R = 1146.28
T = 551.30
L = 1027.67



O.D.O.T. DISTRICT 2 SURVEY OFFICE

PERSONNEL

REFERENCE NO. _____

SHEET 22 OF 36

NOTES BARNHISEL

5-25-04

H.C. VAN DUSEN

DATE ~~7-16-92~~

ROUTE 65

R.C. KUSZ

WEATHER cloudy

COUNTY WOOD

BURNETT

TEMP. +75°

TOWNSHIP WASHINGTON

SECTION 20

T 6 N R 10 E

TYPE MONUMENT P.K. + WASHER ✓

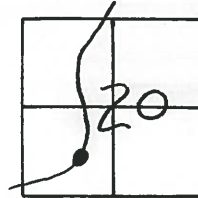
ON SURFACE - ~~BELOW~~ YES

17-A

~~EST~~ - PAV'T. - RIGHT 1.8

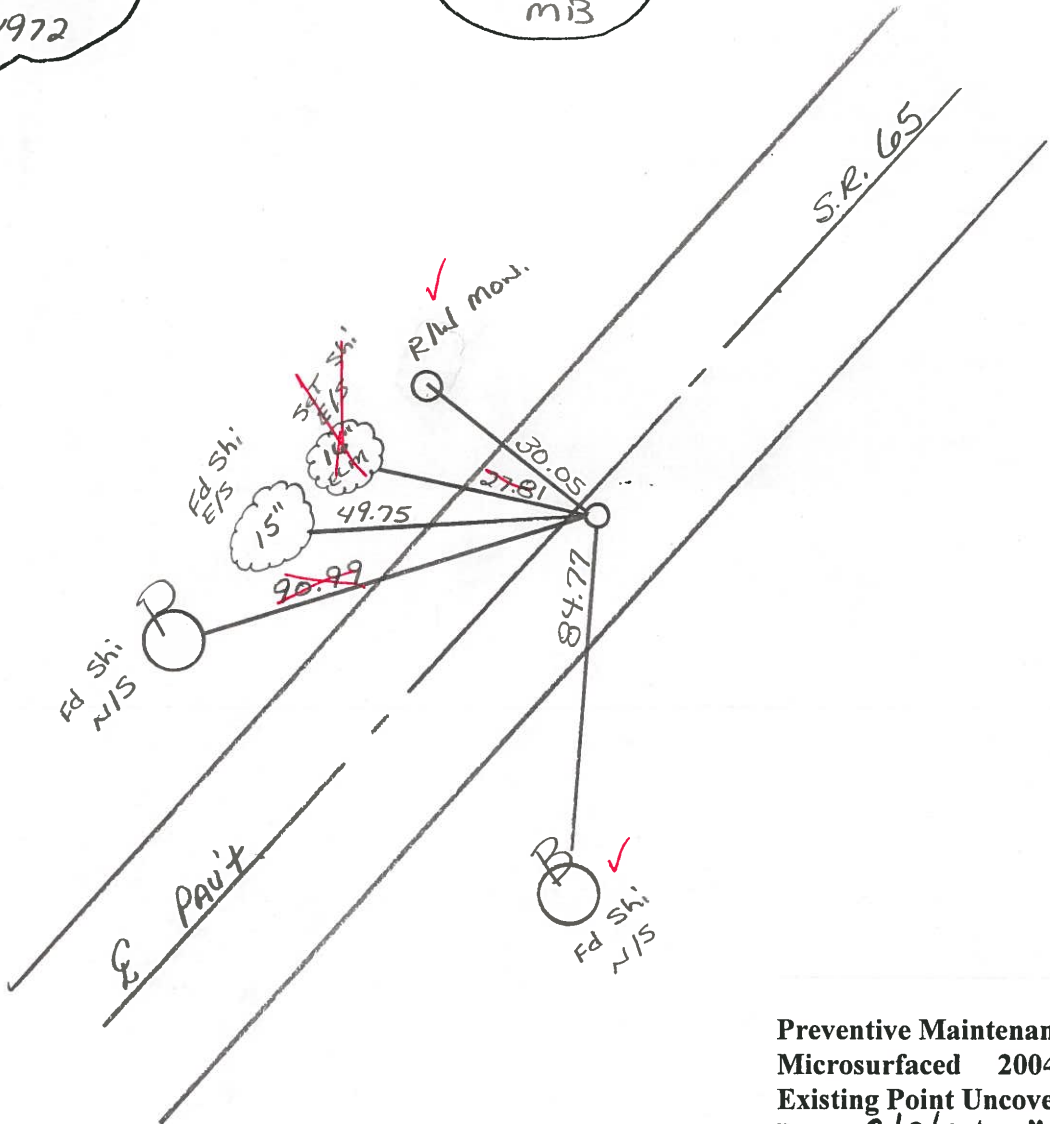
8.5 TO RT EDGE PAVEMENT

S.L.M. 465 + 10



RECORD:
P.T. = 365+96.77
Set PK 1972

Reset PK + WASHER
9-3-92
MB



Preventive Maintenance
Microsurfaced 2004
Existing Point Uncovered
Date 8/9/04 MC

County Wood S.R. 65

Date 4-10-84

Township MIDDLETON

Weather Clear

Section 20

Temp. 50°

T6N, R10E

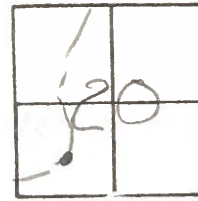
Personnel HOFFMAN

LOENRKE

HOUSEHOLDER

BAWHISEL

17-A



Fd P.K. @ SURFACE

1.2' RT. of & PAWT

8.0' TO RT. EP

10.6' TO LT. EP

S.L.M. 465+10.77

SET PK/WASHER

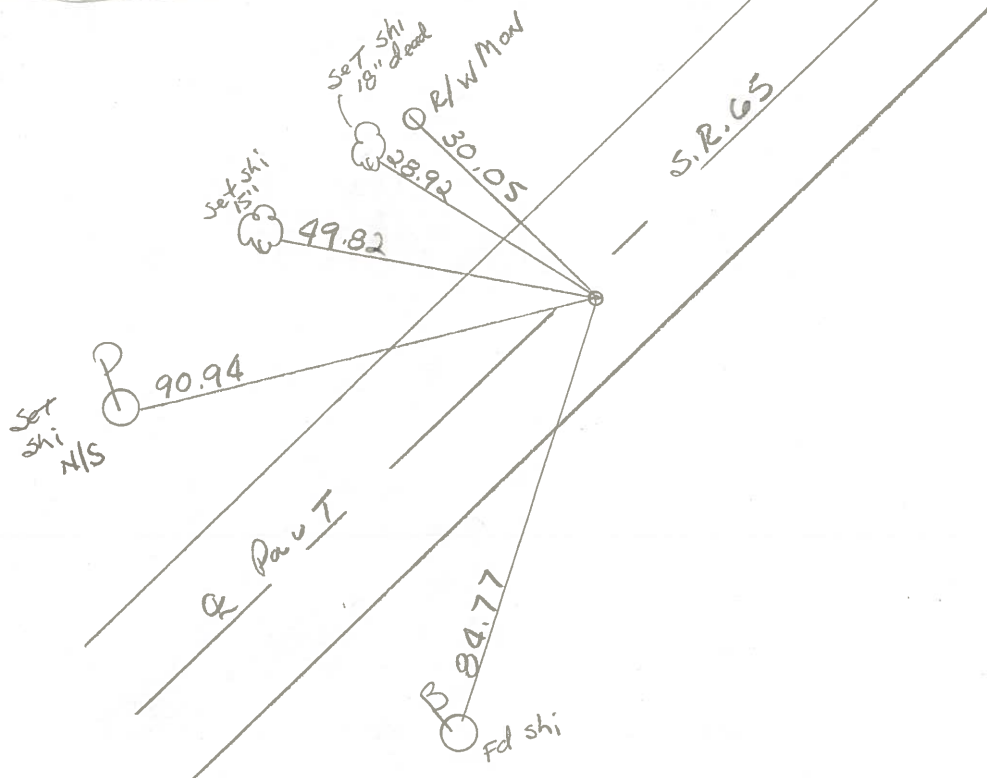
10-10-84

SWH

Record:

P.T. STA 365+96.77

Set P.K. 1972



PERSONNEL TITLE PERSONNEL TITLE

BURNSIDE

COUNTY Wood

DATE 11-6-72

SMITH

S. R. 65

WEATHER CLEAR

BOWERS

SEC. MIDDLETON TWP

TEMP. +58°

DESCRIPTION ESTABLISH REF. & CONTROL POINTS

JOB NO.

LEFT

CENTER LINE

RIGHT

17-A

P.T. STA. 365+96.77
SET P.K. NAIL

