

O.D.O.T. DISTRICT 2 SURVEY OFFICE (USE ONLY)

PERSONNEL

REFERENCE NO. 17 B

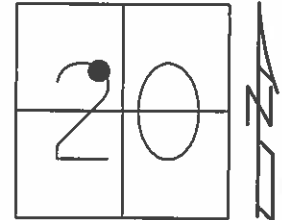
SHEET 38 OF 63

NOTES WESTFALL
 H.C. O'DONNELL
 R.C. LEU
RHOADES

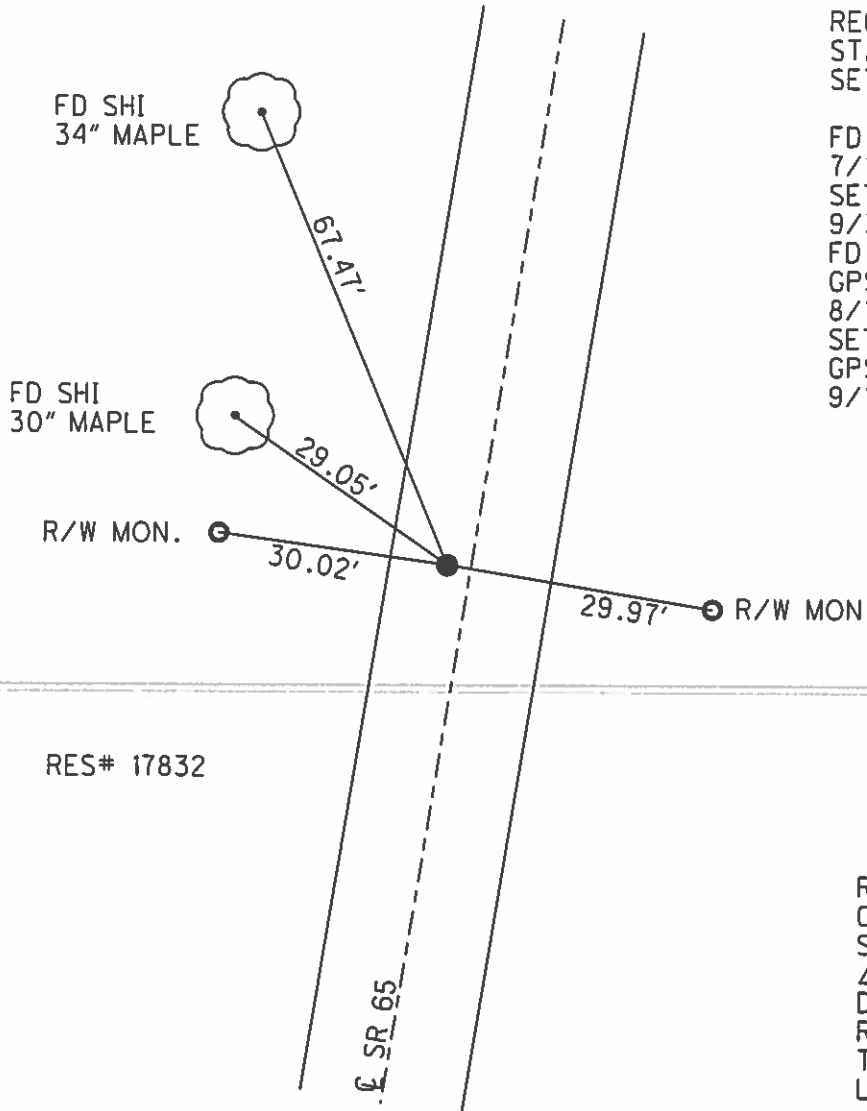
DATE 4/21/15
 WEATHER CLOUDY
 TEMP. 30°

ROUTE SR 65
 COUNTY WOOD
 TOWNSHIP MIDDLETON
 SECTION 20
 T 6 N R 10 E

TYPE MONUMENT P.K.NAIL
 ON SURFACE - ~~BELOW~~ 0.25'
 LEFT - PAV'T - ~~RIGHT~~ 2.3'
7.9' TOLT EDGE PAVEMENT
 S.L.M. 469+67.54



Grid: Northing: 658419.707 Easting: 1627843.787



RECORD: P.C.
 STA. 369+77.79
 SET P.K.NAIL, 1972

FD P.K./WASHER
 7/16/92
 SET P.K./WASHER
 9/3//92, MB
 FD P.K./WASHER
 GPS, REFB17
 8/16/13, SDC
 SET MAG/WASHER
 GPS, NEWREFB17
 9/11/15, JFO

RECORD: P.I.
 CURVE DATA 1926
 STA. 3370+79.2
 $\Delta = 18^\circ 05' RT$
 D = $9^\circ 00'$
 R = 637.28
 T = 101.41
 L = 200.90'

O.D.O.T. DISTRICT 2 SURVEY OFFICE

PERSONNEL

REFERENCE NO. _____

SHEET 23 OF 34

NOTES BARNHISEL

5/25/04

H.C. VAN DUSEN

DATE ~~7-16-92~~

ROUTE 65

R.C. KUSZ

WEATHER cloudy

COUNTY WOOD

BURNETT

TEMP. +75°

TOWNSHIP WASHINGTON

SECTION 20

T 6 N R 10 E

TYPE MONUMENT PK + WASHER PK + WASHER

ON SURFACE - ~~BELOW~~ yes yes

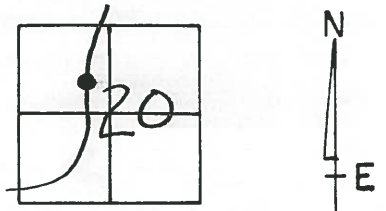
LEFT- ~~&~~ PAV'T. - ~~RIGHT~~ 2.3 2.4

- TO LT EDGE PAVEMENT 2.9 2.1

S.L.M. 468+57 470+56

17-B

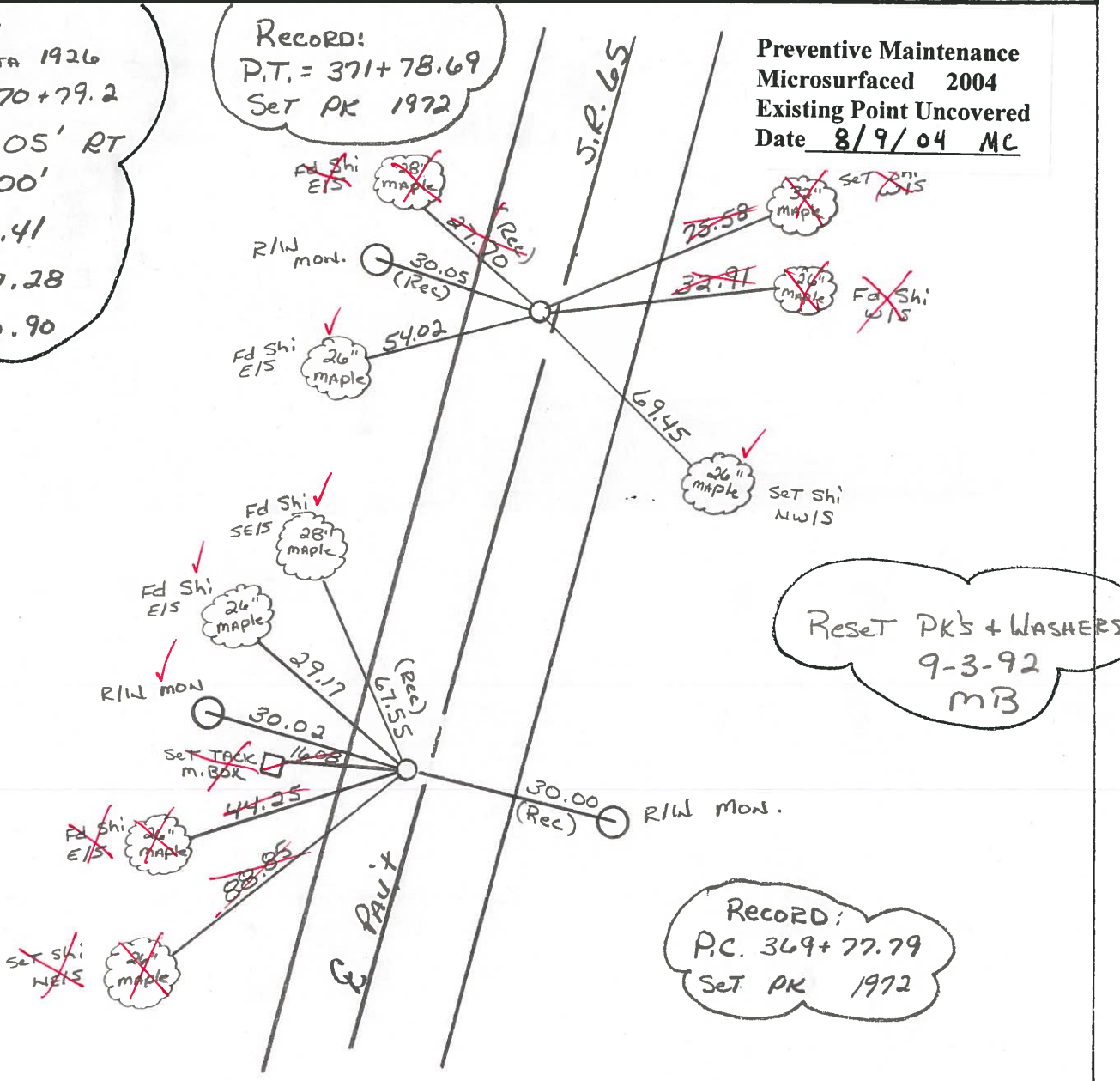
17-C



RECORD!
 CURVE DATA 1926
 P.I. = 370+79.2
 $\Delta = 18^{\circ} - 05' RT$
 $D = 9^{\circ} - 00'$
 $T = 101.41$
 $R = 637.28$
 $L = 200.90$

RECORD!
 P.T. = 371+78.69
 SET PK 1972

Preventive Maintenance
 Microsurfaced 2004
 Existing Point Uncovered
 Date 8/9/04 MC



County WOOD S.R. 65

Date 4-10-84

Township MIDDLETON

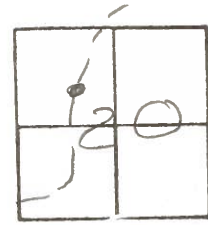
Weather Clear

Section 20

Temp. 50°

T&N, R10E

Personnel HOFFMAN



17-B

LOSHRKE

17-C

HOUSEHOLDER H.C.

BARNHISEL R.C.

SET PK/WASHER
@ BOTH POINTS

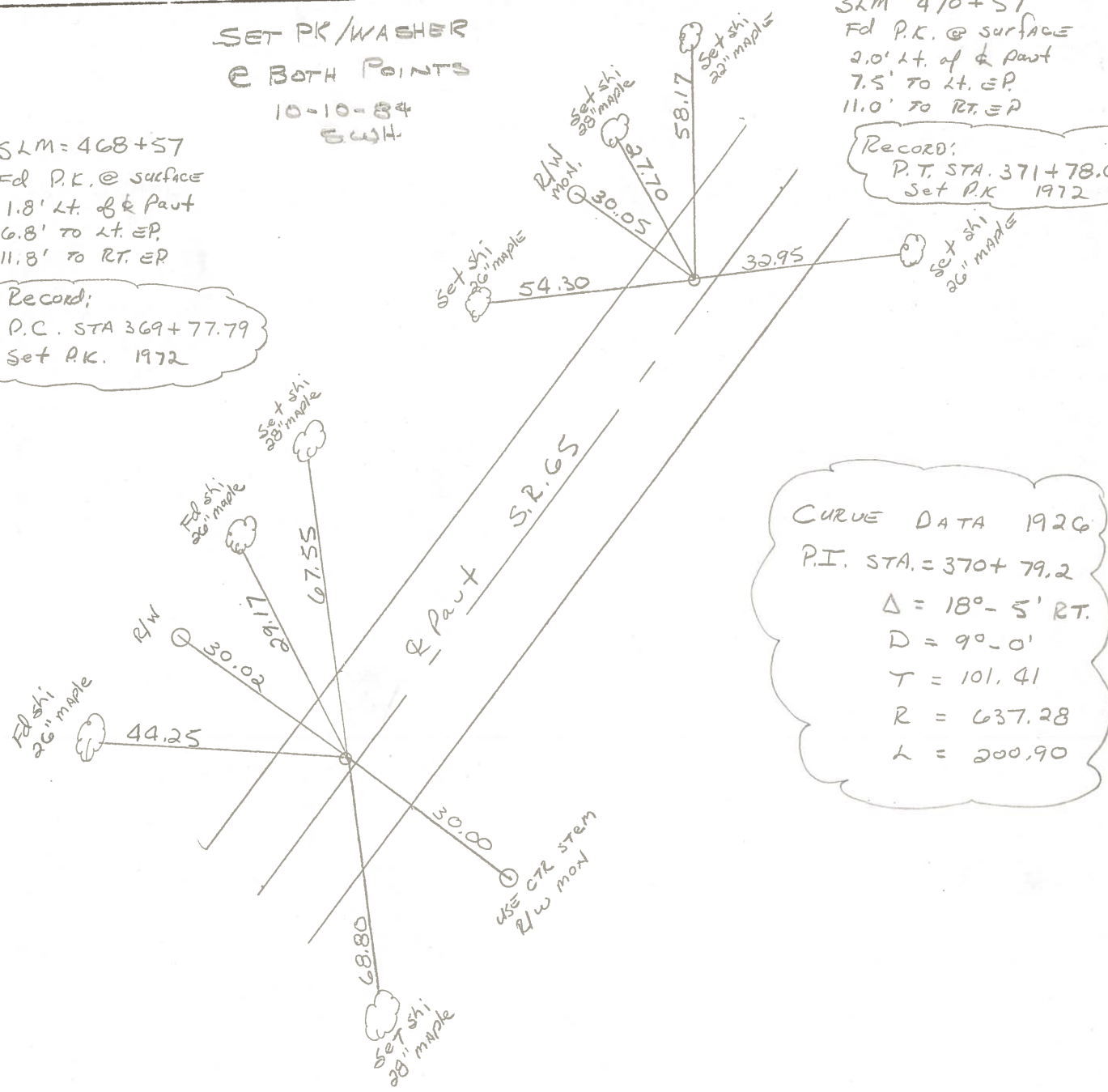
10-10-84
GWH

SLM 470+57
Fd P.K. @ surface
2.0' Lt. of & part
7.5' to Lt. EP
11.0' to RT. EP

Record:
P.T. STA. 371+78.69
Set P.K. 1972

SLM=468+57
Fd P.K. @ surface
1.8' Lt. of & part
6.8' to Lt. EP
11.8' to RT. EP

Record:
P.C. STA 369+77.79
Set P.K. 1972



CURVE DATA 1926
P.I. STA. = 370+79.2
 $\Delta = 18^\circ - 5' RT.$
 $D = 90 - 0'$
 $T = 101.41$
 $R = 637.28$
 $L = 200.90$

PERSONNEL BURNSIDE TITLE _____
 PERSONNEL SMITH TITLE _____
 PERSONNEL BOWERS TITLE _____

COUNTY WOOD DATE 11-6-72
 S. R. 65 WEATHER CLEAR
 SEC. MIDDLETON TWP TEMP. +58°

DESCRIPTION ESTABLISH & REF. & CONTROL POINTS JOB NO. _____

