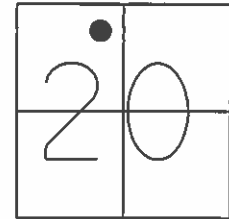


O.D.O.T. DISTRICT 2 SURVEY OFFICE (USE ONLY)

PERSONNEL	REFERENCE NO. <u>17 F</u>	SHEET <u>42</u> OF <u>63</u>
NOTES <u>WESTFALL</u>	DATE <u>4/22/15</u>	ROUTE <u>SR 65</u>
H.C. <u>O'DONNELL</u>	WEATHER <u>CLOUDY</u>	COUNTY <u>WOOD</u>
R.C. <u>LEU</u>	TEMP. <u>40°</u>	TOWNSHIP <u>MIDDLETON</u>
<u>RHOADES</u>		SECTION <u>20</u>
		T <u>6</u> N R <u>10</u> E

TYPE MONUMENT P.K./WASHER  
 ON SURFACE - ~~BELOW~~ ON  
 LEFT - PAV'T - RIGHT ON  
10.1' TO RT EDGE PAVEMENT  
 S.L.M. 488+73.14

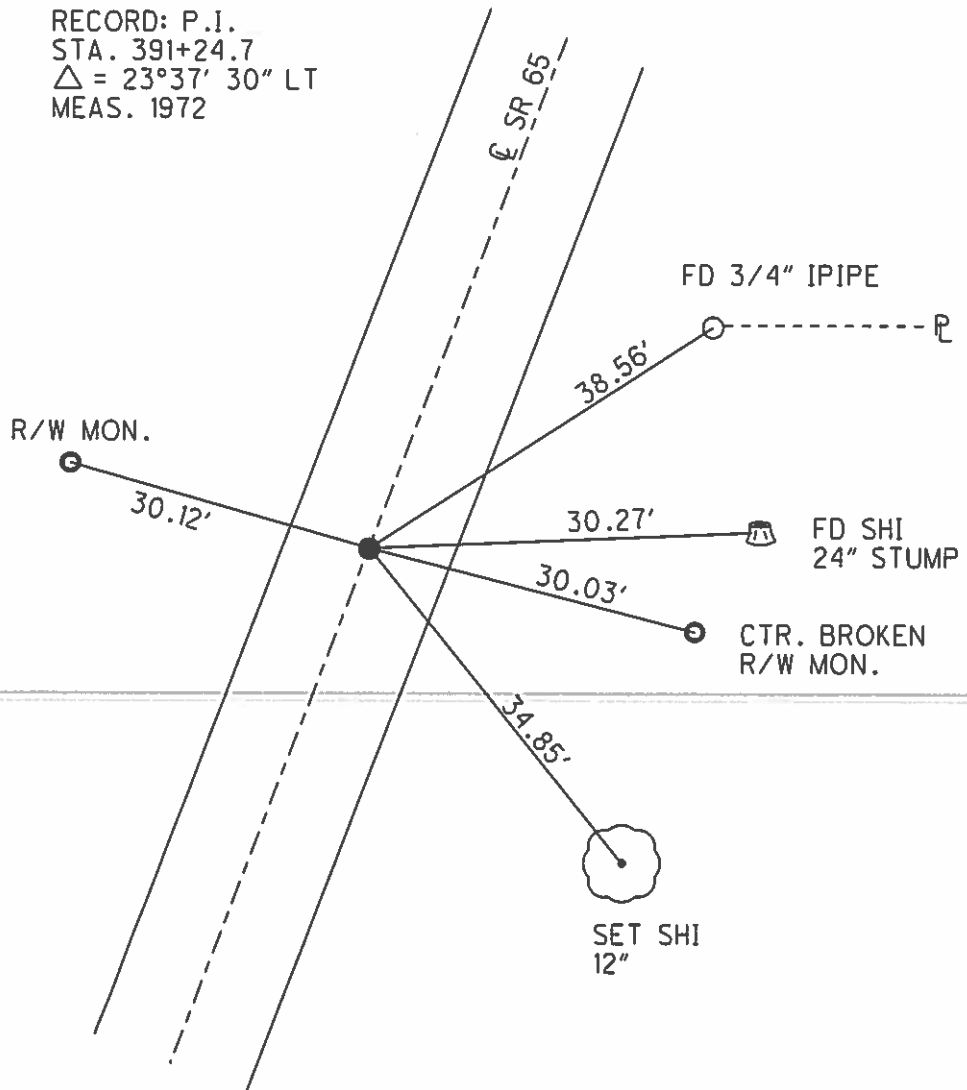


Grid: Northing: 660168.703 Easting: 1628593.531

RECORD: P.C.  
 STA. 388+83.5

FD P.K./WASHER  
 7/16/92  
 SET P.K./WASHER  
 9/4/92, MB  
 FD P.K./WASHER  
 5/25/04  
 GPS, REFF17  
 9/13/13, SDC  
 SET MAG/WASHER  
 GPS, NEWREFGA17  
 9/14/15, JFO

RECORD: P.I.  
 STA. 391+24.7  
 $\Delta = 23^{\circ}37' 30''$  LT  
 MEAS. 1972



# O.D.O.T. DISTRICT 2 SURVEY OFFICE

PERSONNEL

REFERENCE NO. \_\_\_\_\_

SHEET 25 OF 34

NOTES BARNHISEL

5/25/04

H.C. VAN DUSEN

DATE 7-16-92

ROUTE 65

R.C. KUSZ

WEATHER cloudy

COUNTY WOOD

(17-F)

BURNETT

TEMP. +75°

TOWNSHIP WASHINGTON

(17-G)

SECTION 20

(17-H)

P.C. ✓ P.T. ✓ P.C. ✓

TYPE MONUMENT ALL PK'S + WASHERS

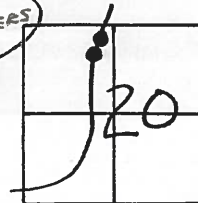
Reset  
P.K.'S + WASHERS  
9-4-92  
mib

ON SURFACE - BELOW YES YES YES

LEFT - ℄ PAV'T. - RIGHT ON ℄ ON ℄ 1.8 LT

TO RT EDGE PAVEMENT 10.1 11.8 11.2

S.L.M. 487+62 492+38 492+69



Record:

P.I. = 391+24.7

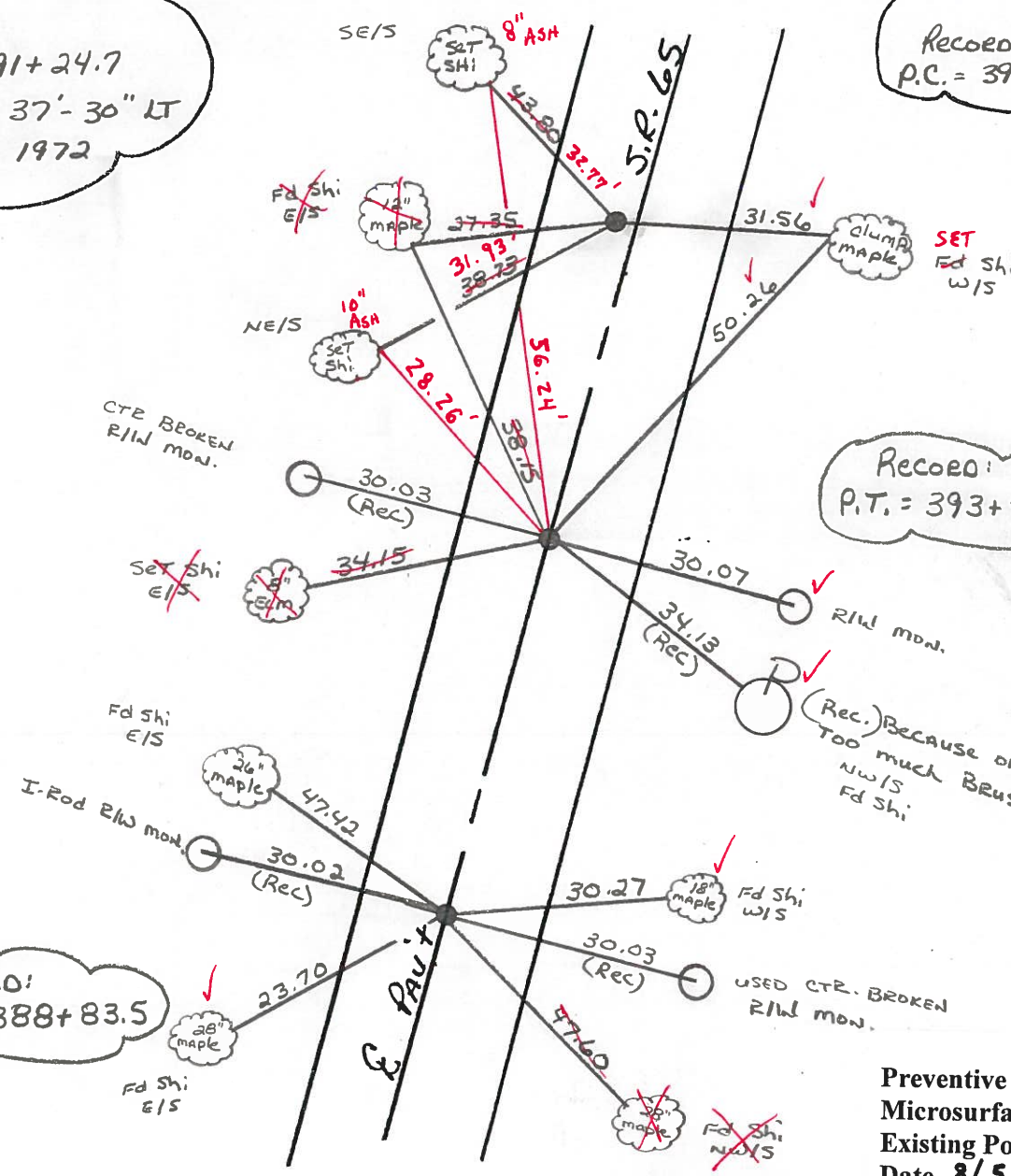
$\Delta = 23^\circ - 37' - 30''$  LT

MEAS 1972

Record:  
P.C. = 393+82

Record:  
P.T. = 393+58.8

Record:  
P.C. = 388+83.5



Preventive Maintenance  
Microsurfaced 2004  
Existing Point Uncovered  
Date 8/5/04 MC

County Wood S.R. 65

Date 4-10-84

Township MIDDLETON

Weather clear

Section 20

Temp. 45°

T6N, R10E

Personnel HOFFMAN

(17-F)

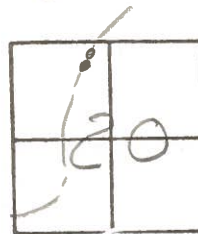
LOENRKE

(17-H)

HOUSEHOLDER H.C.

(17-G)

BARNHISEL R.C.

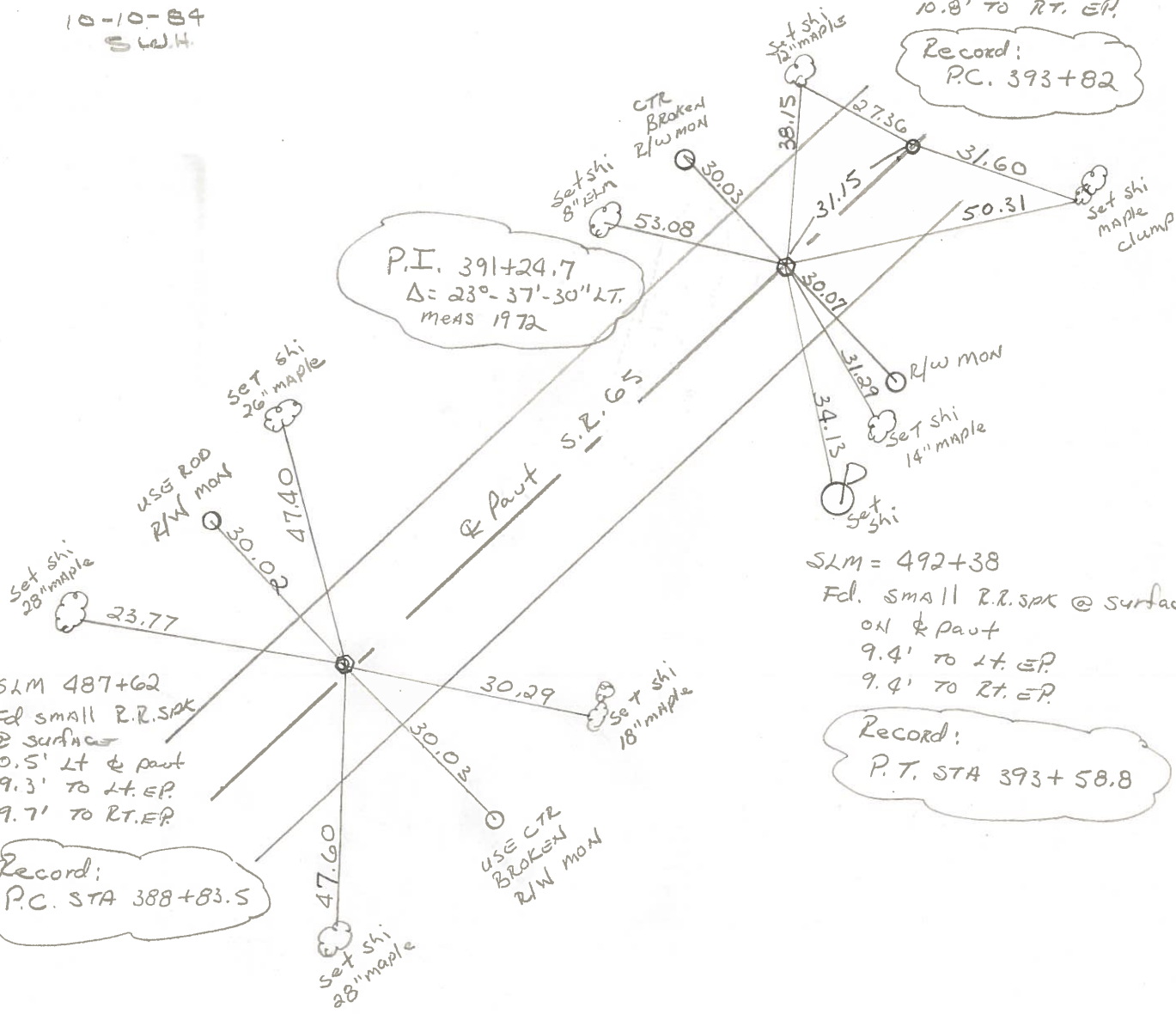


SET PK / WASHER  
@ ALL 3 POINTS  
10-10-84  
S.W.H.

SLM 492+69  
Fd P.K. @ surface  
1.2' Lt. of & part  
11.4' to Lt. EP.  
10.8' to Rt. EP.

Record:  
P.C. 393+82

P.I. 391+24.7  
Δ: 23°-37'-30" Lt.  
meas 1972



SLM 487+62  
Fd small R.R. SPK  
@ surface  
0.5' Lt & part  
9.3' to Lt. EP.  
9.7' to Rt. EP.

Record:  
P.C. STA 388+83.5

SLM = 492+38  
Fd. small R.R. SPK @ surface  
on & part  
9.4' to Lt. EP.  
9.4' to Rt. EP.

Record:  
P.T. STA 393+58.8

PERSONNEL TITLE PERSONNEL TITLE  
BURNSIDE \_\_\_\_\_  
SMITH \_\_\_\_\_  
BOWERS \_\_\_\_\_  
KIJOWSKI \_\_\_\_\_

COUNTY WOOD DATE 11-9-72  
 S. R. 65 WEATHER CLOUDY  
 SEC. MIDDLETON TWP TEMP. +43°

DESCRIPTION ESTABLISH & REF. & CONTROL POINTS JOB NO. \_\_\_\_\_

