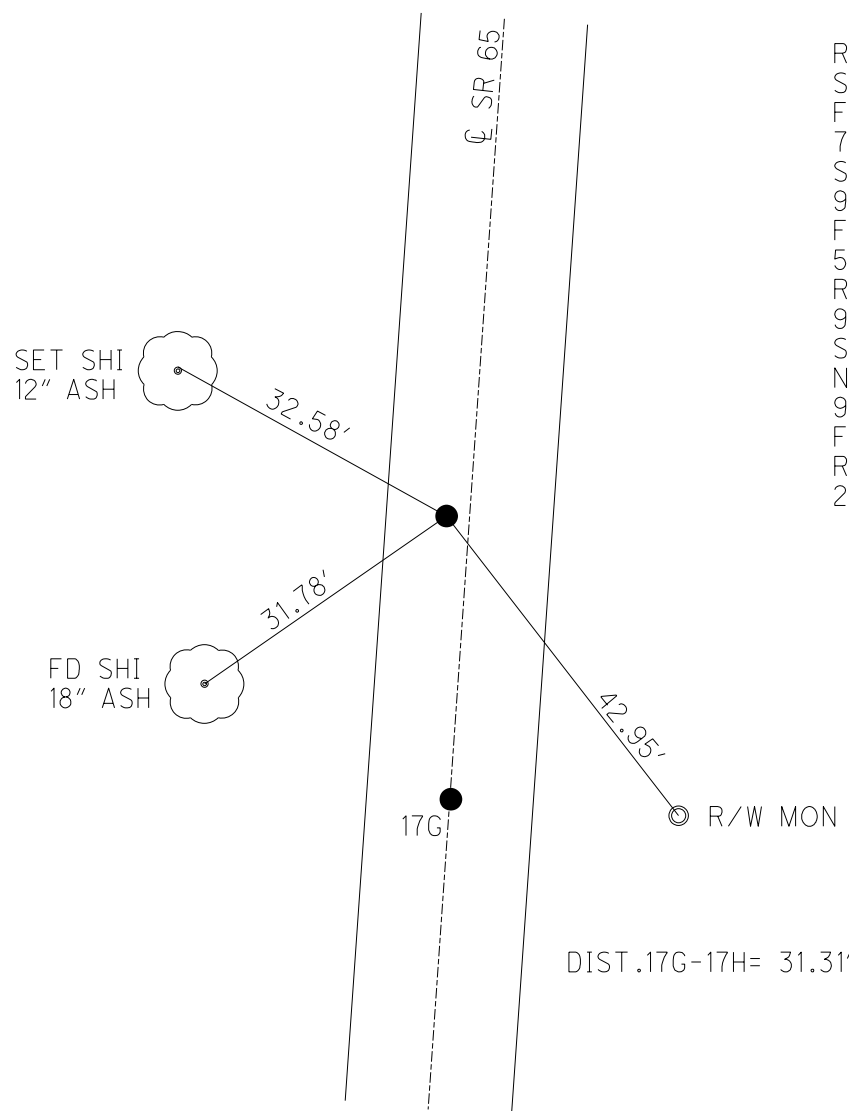
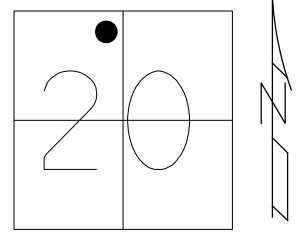


O.D.O.T. DISTRICT 2 SURVEY OFFICE (USE ONLY)

PERSONNEL _____ REFERENCE NO. 17 H SHEET 44 OF 63
 NOTES NIESE DATE 2/16/24 ROUTE SR 65
 H.C. NIESE WEATHER FAIR COUNTY WOOD
 R.C. ASTON TEMP. 32° TOWNSHIP MIDDLETON
 DWG BY RHOADES PID 93680 SECTION 20
 T 6 N R 10 E

TYPE MONUMENT MAG/WASHER
 ON SURFACE - ~~BELOW~~ ON
 OFFSET \odot PAVEMENT 1.8' LT : ~~RT~~
11.2' TO RT EDGE PAVEMENT
 STATION: 493+80.45

HORZ. DATUM: NAD83 2011 GEOID: NAVD88 2018
 GRID: NORTHING: 660663.870 EASTING: 1628680.618

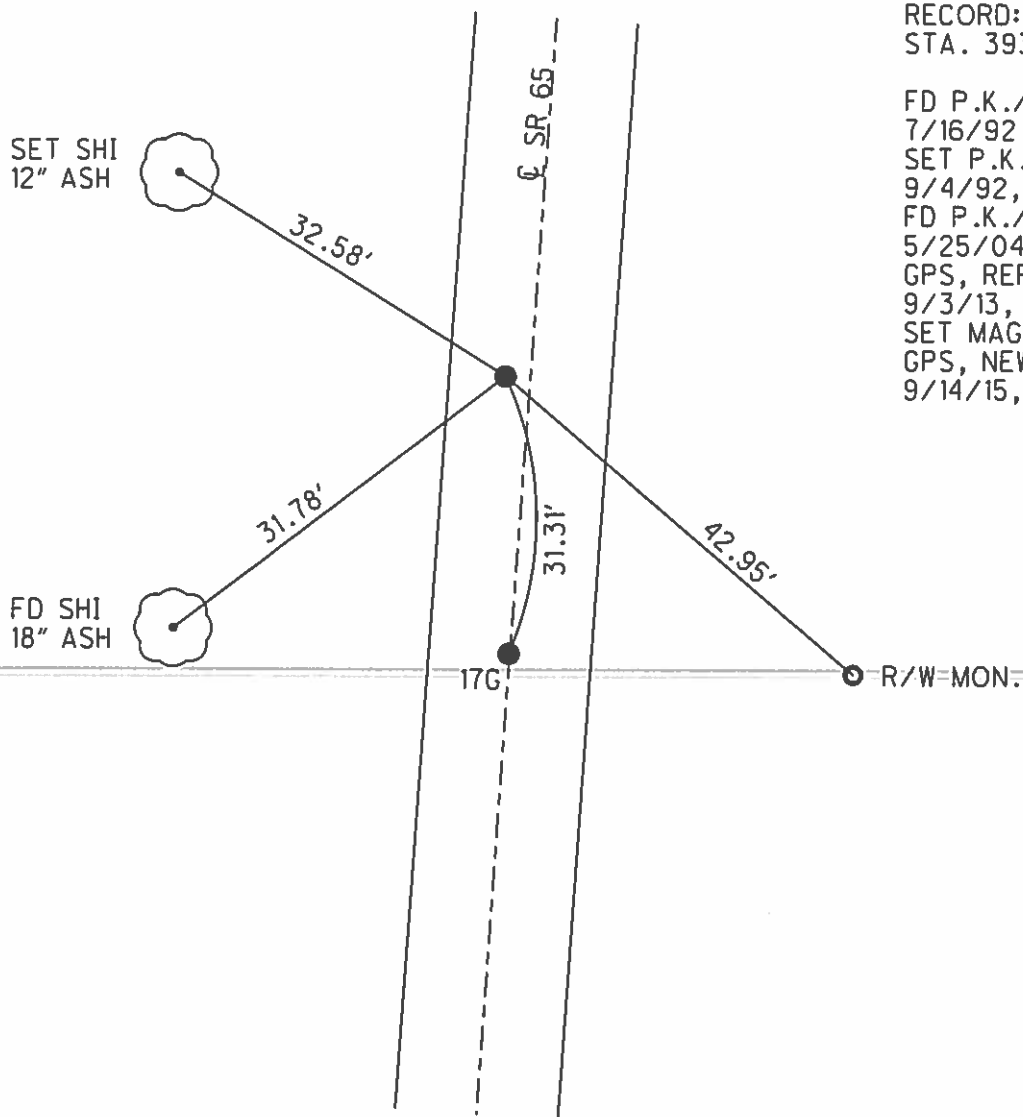
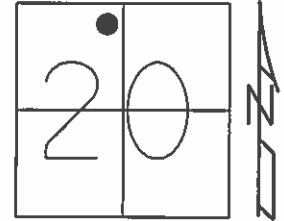


RECORD: P.C.
 STA. 393+82
 FD P.K./WASHER
 7/16/92
 SET P.K./WASHER
 9/4/92, MB
 FD P.K./WASHER
 5/25/04
 REFH17
 9/3/13, SDC
 SET MAG/WASHER
 NEWREFH17
 9/14/15, JFO
 FD MAG/WASHER
 REF17H
 2/16/24, TDN

O.D.O.T. DISTRICT 2 SURVEY OFFICE (USE ONLY)

PERSONNEL	REFERENCE NO. <u>17 H</u>	SHEET <u>44</u> OF <u>63</u>
NOTES <u>WESTFALL</u>	DATE <u>4/22/15</u>	ROUTE <u>SR 65</u>
H.C. <u>O'DONNELL</u>	WEATHER <u>CLOUDY</u>	COUNTY <u>WOOD</u>
R.C. <u>LEU</u>	TEMP. <u>40°</u>	TOWNSHIP <u>MIDDLETON</u>
<u>RHOADES</u>		SECTION <u>20</u>
		T <u>6</u> N R <u>10</u> E

TYPE MONUMENT P.K./WASHER
 ON SURFACE - ~~BELOW~~ ON
 LEFT - PAV'T - ~~RIGHT~~ 1.8'
11.2' TORT EDGE PAVEMENT
 S.L.M. 493+80.45
 Grid: Northing: 660663.907 Easting: 1628680.602



RECORD: P.C.
 STA. 393+82

FD P.K./WASHER
 7/16/92
 SET P.K./WASHER
 9/4/92, MB
 FD P.K./WASHER
 5/25/04
 GPS, REFH17
 9/3/13, SDC
 SET MAG/WASHER
 GPS, NEWREFH17
 9/14/15, JFO

O.D.O.T. DISTRICT 2 SURVEY OFFICE

PERSONNEL

REFERENCE NO. _____

SHEET 25 OF 34

NOTES BARNHISEL

5/25/04

H.C. VAN DUSEN

DATE 9-16-92

ROUTE 65

R.C. KUSZ

WEATHER cloudy

COUNTY WOOD

17-F

BURNETT

TEMP. +75°

TOWNSHIP WASHINGTON

17-G

17-H

P.C. ✓ P.T. ✓ P.C. ✓

Reset
P.K.'S + WASHERS
9-4-92
mib

SECTION 20

T 6 N R 10 E

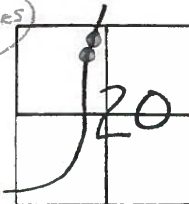
TYPE MONUMENT ALL PK'S + WASHERS

ON SURFACE - BELOW yes yes yes

LEFT - PAV'T. - RIGHT ON & ON & 1.8 LT

TO RT EDGE PAVEMENT 10.1 11.8 11.2

S.L.M. 487+62 492+38 492+69



RECORD:

P.I. = 391+24.7

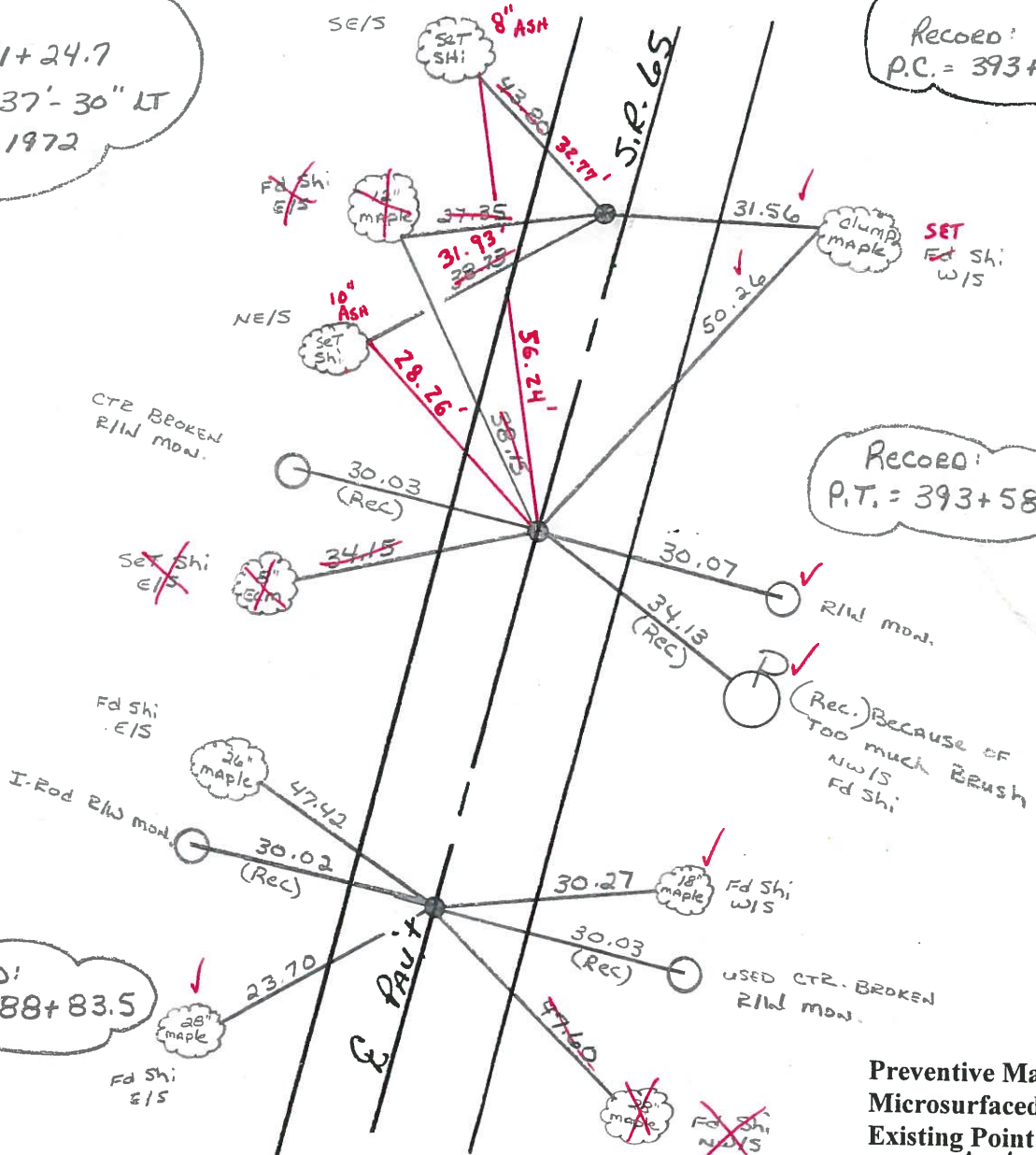
$\Delta = 23^\circ - 37' - 30''$ LT

MEAS 1972

RECORD:
P.C. = 393+82

RECORD:
P.T. = 393+58.8

RECORD:
P.C. = 388+83.5



Preventive Maintenance
Microsurfaced 2004
Existing Point Uncovered
Date 8/5/04 MC

County Wood S.R. 65

Date 4-10-84

Township MIDDLETON

Weather clear

Section 20

Temp. 45°

T6N, R10E

Personnel HOFFMAN

17-F

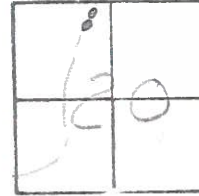
LOENRKE

17-H

HOUSEHOLDER H.C.

17-G

BARNHISEL R.C.

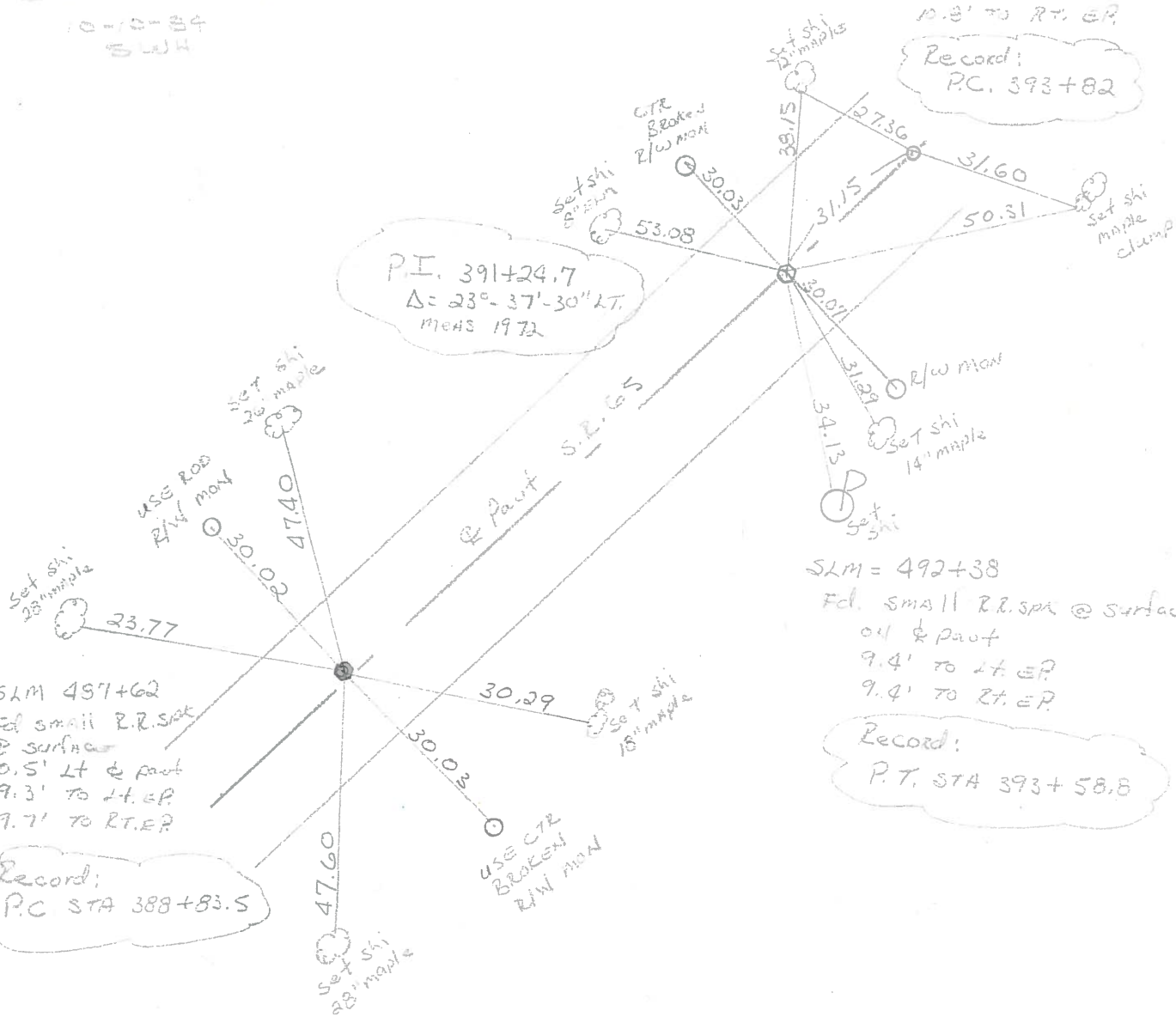


SET PK / WASHOR
 @ ALL 3 POINTS
 10-10-84
 SWH

SLM 492+69
 Fd. P.K. @ surface
 1.2' Lt. of & part
 11.4' to Lt. EP.
 10.8' to Rt. EP.

Record:
 P.C. 393+82

P.I. 391+24.7
 $\Delta = 23^\circ - 37' - 30''$ LT.
 MEAS 1972



SLM = 492+38
 Fd. small R.R. spk @ surface
 oil & part
 9.4' to Lt. EP
 9.4' to Rt. EP.

Record:
 P.T. STA 393+58.8

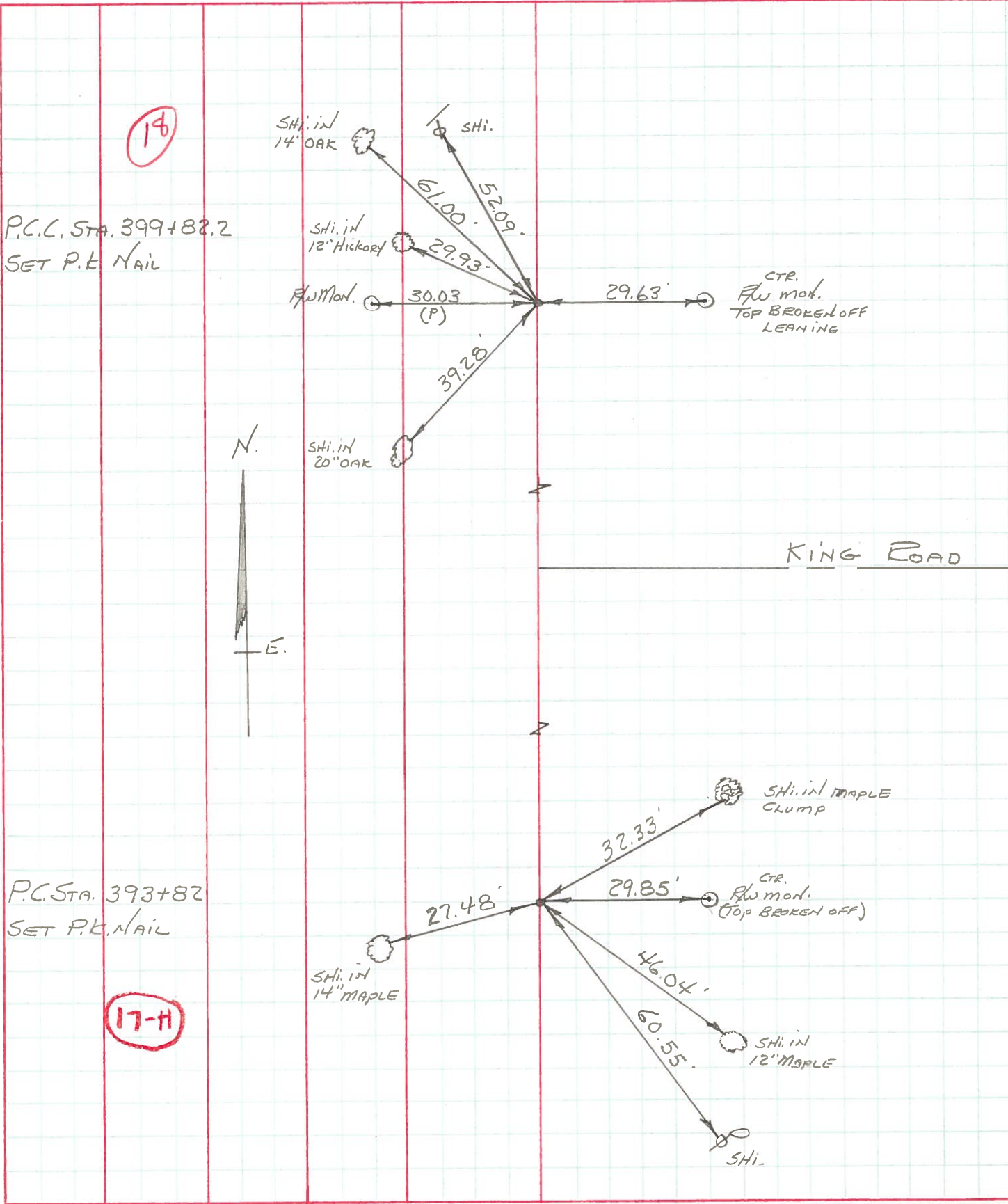
SLM 497+62
 Fd. small R.R. spk
 @ surface
 0.5' Lt & part
 9.3' to Lt. EP
 9.7' to Rt. EP.

Record:
 P.C. STA 388+83.5

PERSONNEL TITLE PERSONNEL TITLE
BURNSIDE _____
SMITH _____
BOWERS _____
KIJOWSKI _____

COUNTY WOOD DATE 11-9-72
 S. R. 65 WEATHER CLOUDY
 SEC. MIDDLETON TWP TEMP. +43°

DESCRIPTION ESTABLISH & REF. & CONTROL POINTS JOB NO. _____



16

P.C.C. STA. 399+82.2
 SET P.K. NAIL



KING ROAD

P.C. STA. 393+82
 SET P.K. NAIL

17-H