

O.D.O.T. DISTRICT 2 SURVEY OFFICE (USE ONLY)

PERSONNEL

REFERENCE NO. 17 1

SHEET 45 OF 63

NOTES LEU  
 H.C. O'DONNELL  
 R.C. RHOADES

DATE 4/30/15  
 WEATHER CLOUDY  
 TEMP. 50°

ROUTE SR 65  
 COUNTY WOOD  
 TOWNSHIP MIDDLETON  
 SECTION 20  
 T 6 N R 10 E

TYPE MONUMENT P.K./WASHER

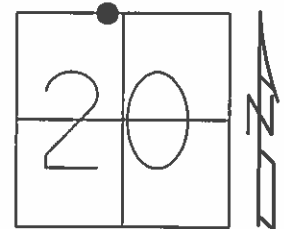
~~ON SURFACE~~ - BELOW 0.25'

LEFT - PAV'T - ~~RIGHT~~ 3.4'

6.1' TO LT EDGE PAVEMENT

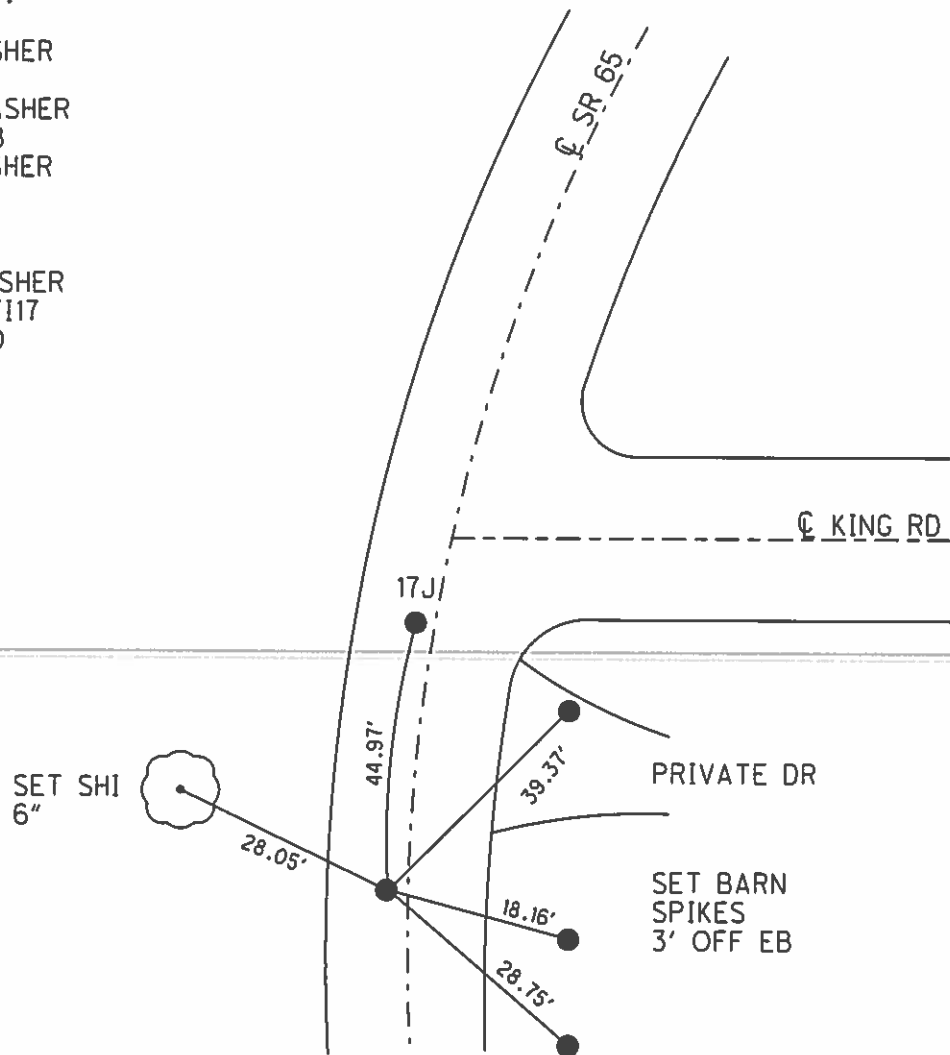
S.L.M. 495+31.23

Grid: Northing: 660814.635 Easting: 1628685.356



RECORD: P.C.

- FD P.K./WASHER
- 7/16/92
- SET P.K./WASHER
- 7/28/92, MB
- FD P.K./WASHER
- 5/25/04
- GPS, REF117
- 9/4/13, SDC
- SET MAG/WASHER
- GPS, NEWREF117
- 9/14/15, JFO



# O.D.O.T. DISTRICT 2 SURVEY OFFICE

PERSONNEL

REFERENCE NO. \_\_\_\_\_

SHEET 26 OF 34

NOTES BARNHISEL

5/25/04

H.C. VAN DUSEN

DATE 7-16-92

ROUTE 65

R.C. KUSZ

WEATHER SUNNY

COUNTY WOOD

BURNETT

TEMP. +77°

TOWNSHIP MIDDLETON

SECTION 20

T 6 N R 10 E

PT (A) ✓      PT (B) ✓  
(ORIGIN UNKNOWN)

TYPE MONUMENT P.K.'S + WASHERS

ON SURFACE - ~~BELOW~~ yes      yes

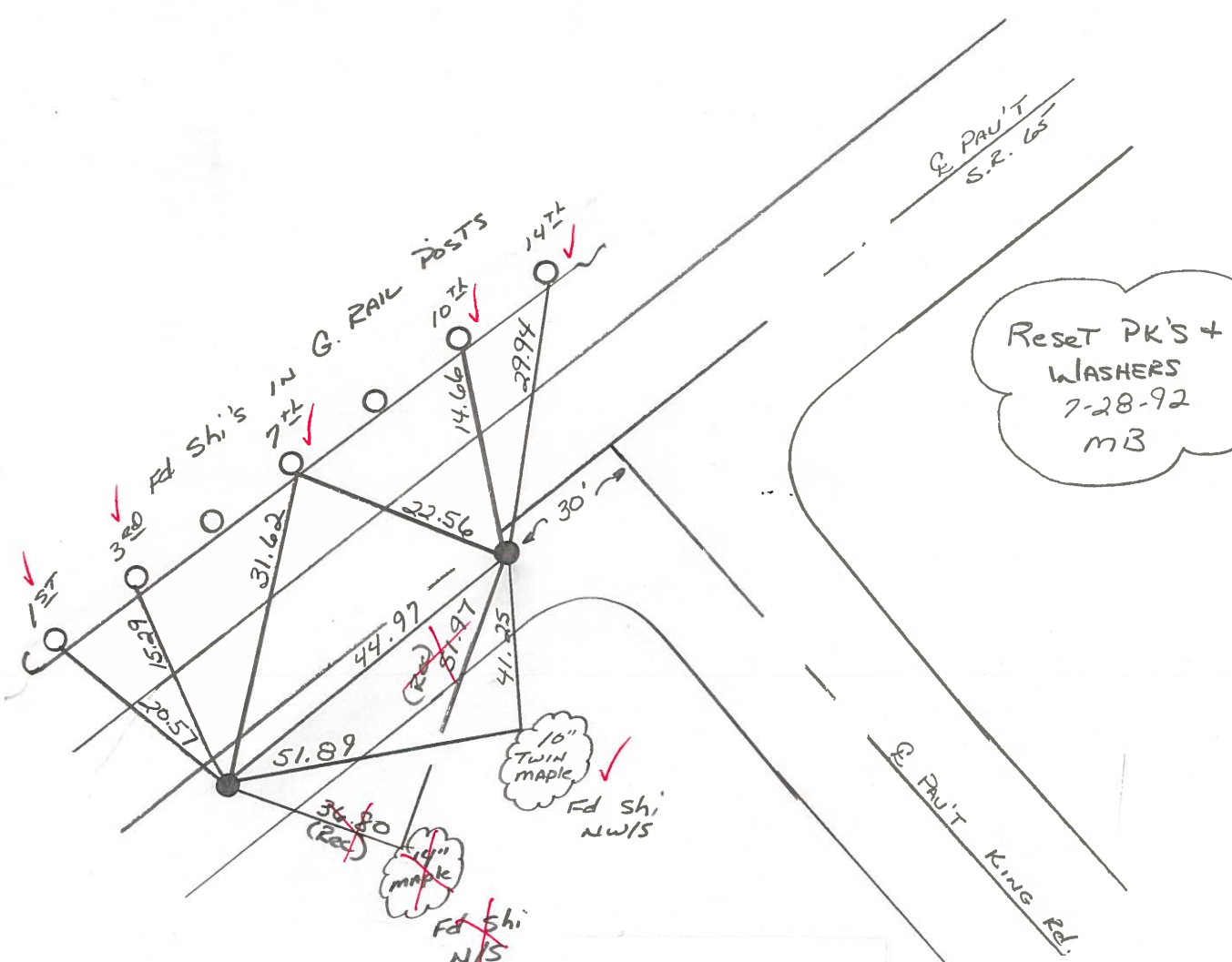
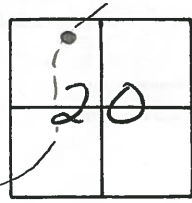
LEFT - C PAV'T. - ~~RIGHT~~ 3.4      2.4

— TO LT EDGE PAVEMENT 6.1      2.1

S.L.M. 494+20      494+65

(17-I)

(17-J)



Reset PK'S +  
WASHERS  
7-28-92  
MB

Preventive Maintenance  
Microsurfaced 2004  
Existing Point Uncovered  
Date 8/5/04 MB

County Wood S.R. 65

Date 4-11-84

Township MIDDLETON

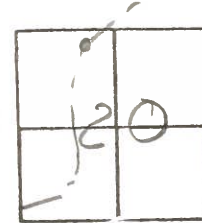
Weather clear

Section 20

Temp. 45°

T6N, R10E

Personnel HOFFMAN



**17-I**

LOENZKE

**17-J**

Householder H.C.

BARWISSEL R.C.

PT. "A" Fd R.R. SPC @ SURFACE, ORIGIN UNKNOWN

SLM 494+20

1.8' Lt. of & part

SET PK/WASHER

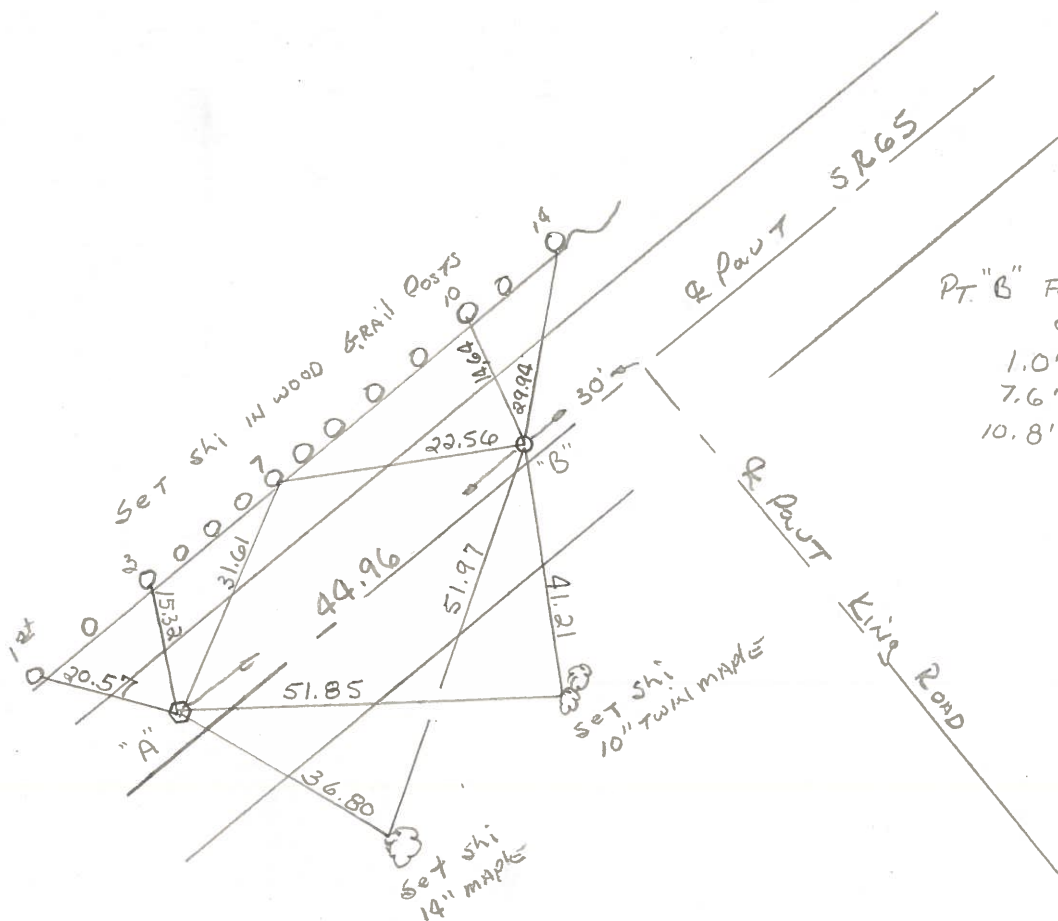
7.2' TO Lt. EP.

@ BOTH POINTS

11.6' TO RT. EP.

10-10-84

S.W.H.



PT. "B" Fd P.K. @ SURFACE

ORIGIN UNKNOWN

1.0' Lt. of & part

7.6' TO Lt. EP.

10.8' TO RT. EP.

PERSONNEL TITLE PERSONNEL TITLE

COUNTY Wood

DATE OK-12-12-57

S. R. #110

WEATHER

SEC.

TEMP.

DESCRIPTION

LEFT

CENTER LINE

RIGHT

JOB NO.

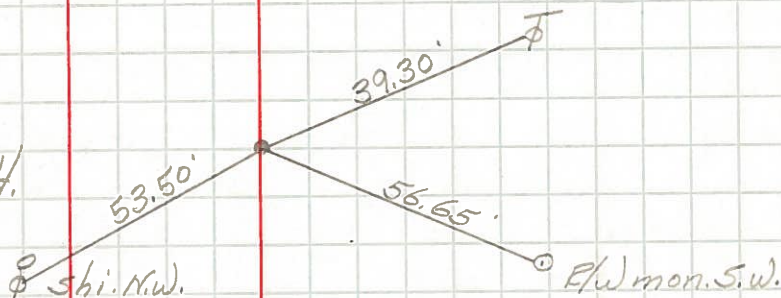
P.I. Sta. 240+48.10

$\Delta = 0^{\circ} - 05' Lt.$

Line N. & S. 3' S. edge part.

Stone - fd. R. R. spk.

#515

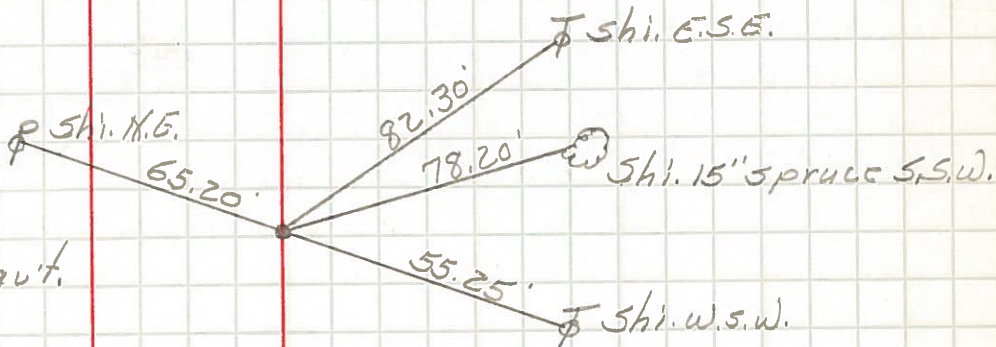


P.I. Sta. 253+86.80

$\Delta = 10^{\circ} - 03' Lt.$

Fd. R. R. spk. S. edge part.

#516



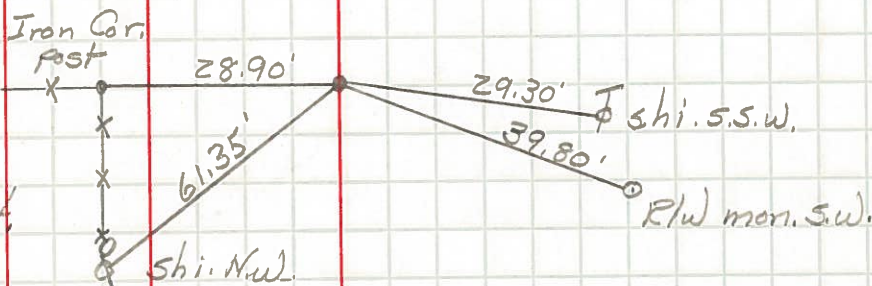
P.I. Sta. 280+36.12

$\Delta = 0^{\circ} - 04' Lt.$

Sec. line N. & S. 1' in part.

Fd. R. R. spk.

#517



P.I. Sta. 306+88.00

$\Delta = 0^{\circ} - 39' Rt.$

Inter. S. R. #110 of Tontogany Rd.

Fd. R. R. spike

2' S. of part. Ed. N. & S.

1/2 sec. line

#518

