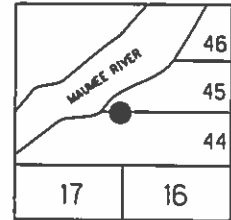


O.D.O.T. DISTRICT 2 SURVEY OFFICE (USE ONLY)

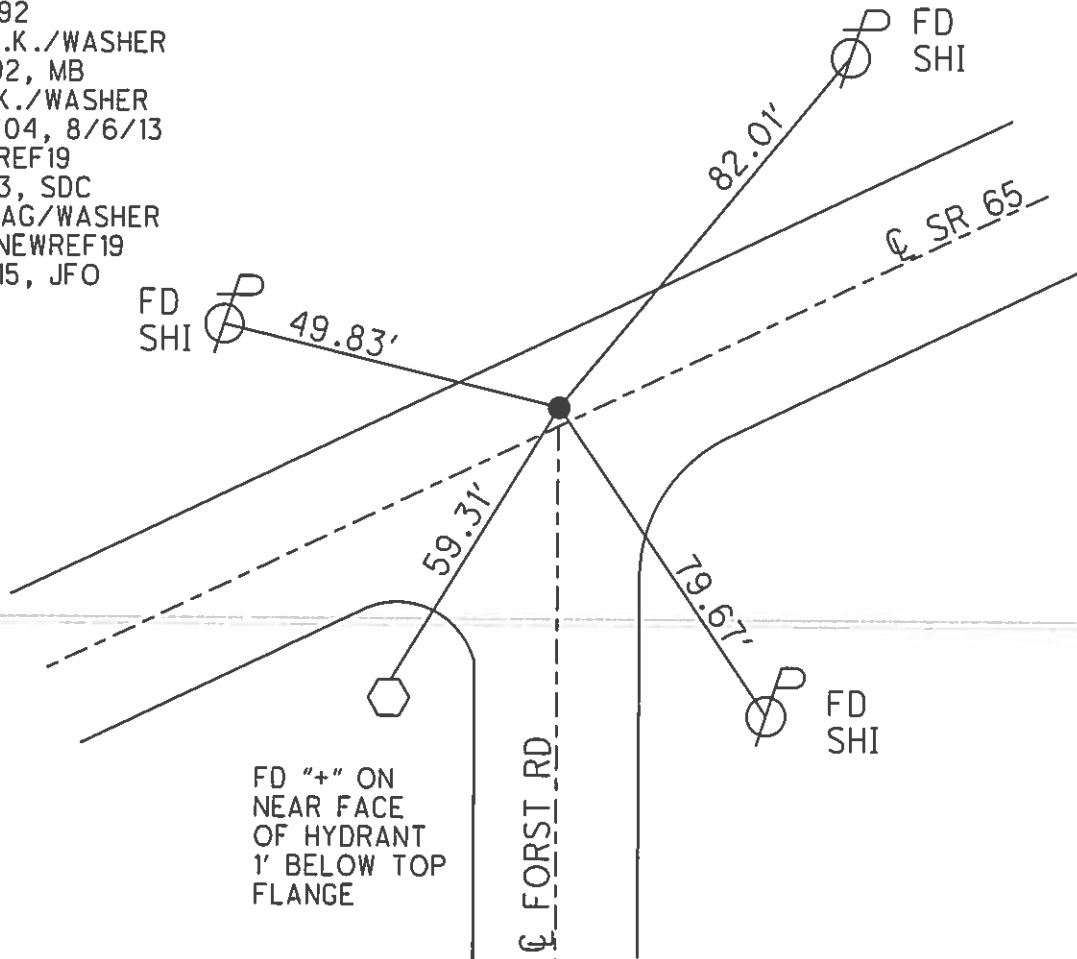
PERSONNEL _____ REFERENCE NO. 19 SHEET 51 OF 63
 NOTES LEU DATE 4/30/15 ROUTE SR 65
 H.C. O'DONNELL WEATHER CLOUDY COUNTY WOOD
 R.C. RHOADES TEMP. 50° TOWNSHIP MIDDLETON
 SECTION RT 45
 T 1 R 10 E

TYPE MONUMENT P.K./WASHER
 ON SURFACE - ~~BELOW~~ ON
 LEFT - PAV'T - ~~RIGHT~~ 0.6'
10.0' TO LT EDGE PAVEMENT
 S.L.M. 541+46.24

Grid: Northing: 663781.166 Easting: 1631916.515



RECORD:
 ORIGIN UNKNOWN
 FD P.K./WASHER
 7/15/92
 SET P.K./WASHER
 9/4/92, MB
 FD P.K./WASHER
 5/25/04, 8/6/13
 GPS, REF19
 9/4/13, SDC
 SET MAG/WASHER
 GPS, NEWREF19
 9/14/15, JFO



O.D.O.T. DISTRICT 2 SURVEY OFFICE

PERSONNEL _____

REFERENCE NO. _____

SHEET 31 OF 36

NOTES BARNHISEL

H.C. VAN DUSEN

R.C. KUSZ

BURNETT

DATE 5/25/04
~~7-15-92~~

WEATHER RAIN

TEMP. +65°

ROUTE 65

COUNTY WOOD

TOWNSHIP MIDDLETON

SECTION R.T. 45

T 6 N R 10 E

TYPE MONUMENT P.K. + WASHER

ON SURFACE - ~~BELOW~~ yes

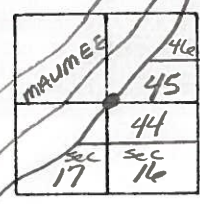
LEFT- & PAV'T. - ~~RIGHT~~ 0.6

9.4 TO LT EDGE PAVEMENT

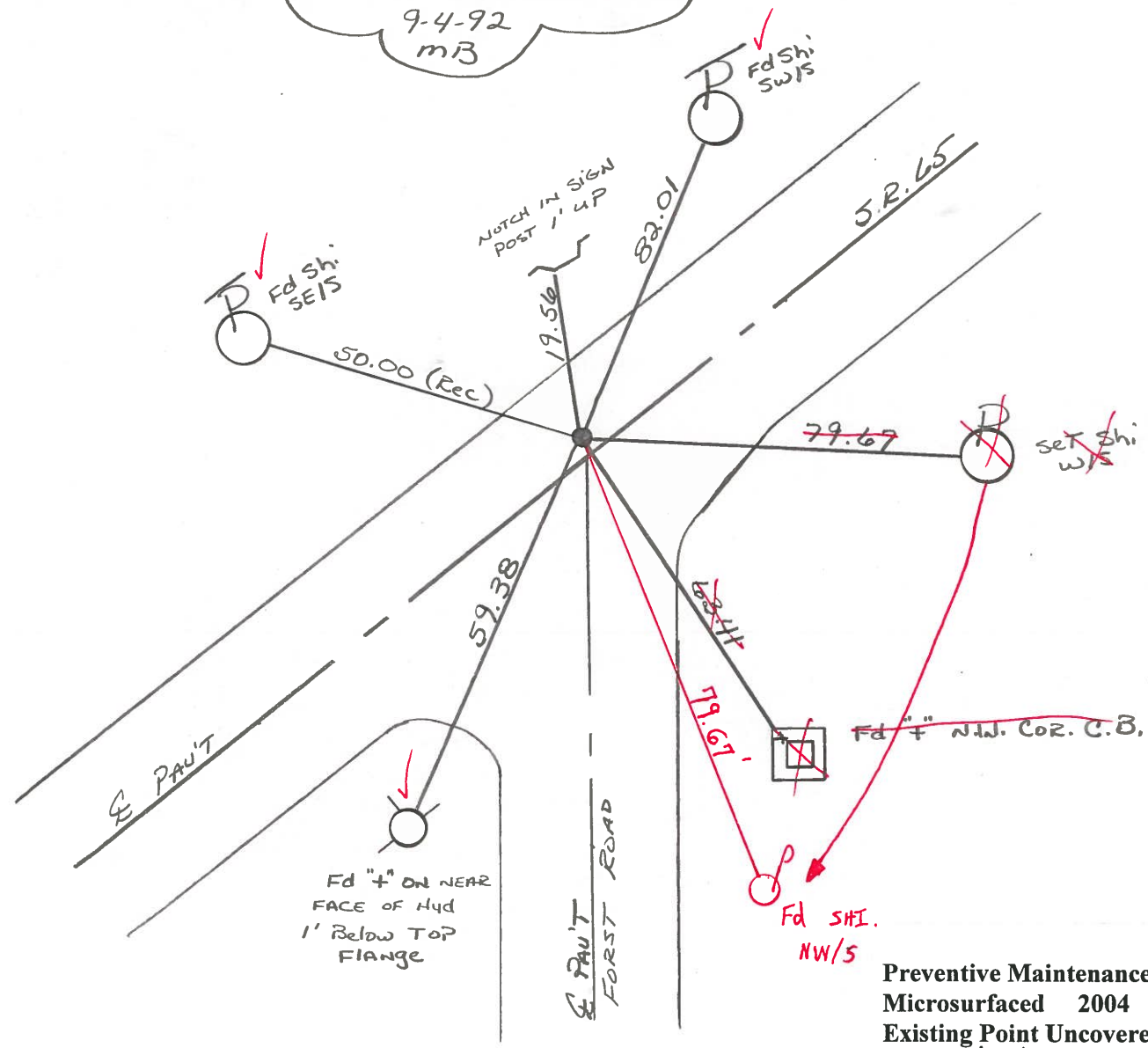
S.L.M. 546 + 35

ORIGIN UNKNOWN

19



Reset P.K. + WASHER
9-4-92
MB



Preventive Maintenance
Microsurfaced 2004
Existing Point Uncovered
Date 8/5/04 MB

County Wood S.R. 65

Date 4-12-84

Township MIDDLETON

Weather clear

Section R.T. 45

Temp. 40°

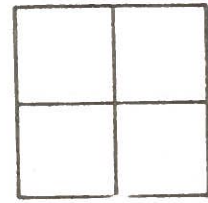
T6N, R10E

Personnel HOFFMAN

HOUSEHOLDER H.C.

BARNHISEL L.C.

19



Fcd PK @ SURFACE, ORIGIN UNKNOWN

SLM 540+37

1.0' LT of & PAWT SR65
9.0' TO LT. EP

SET P.K./WASHER
10-10-84
S.W.H.

