

O.D.O.T. DISTRICT 2 SURVEY OFFICE (USE ONLY)

PERSONNEL

REFERENCE NO. 19 B

SHEET 53 OF 63

NOTES LEU

DATE 4/30/15

ROUTE SR 65

H.C. O'DONNELL

WEATHER CLOUDY

COUNTY WOOD

R.C. RHOADES

TEMP. 50°

TOWNSHIP MIDDLETON

SECTION RT 45

T 1 R 10 E

TYPE MONUMENT P.K./WASHER

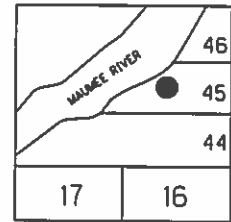
ON SURFACE - ~~BELOW~~ ON

LEFT - PAV'T - ~~RIGHT~~ 3.6'

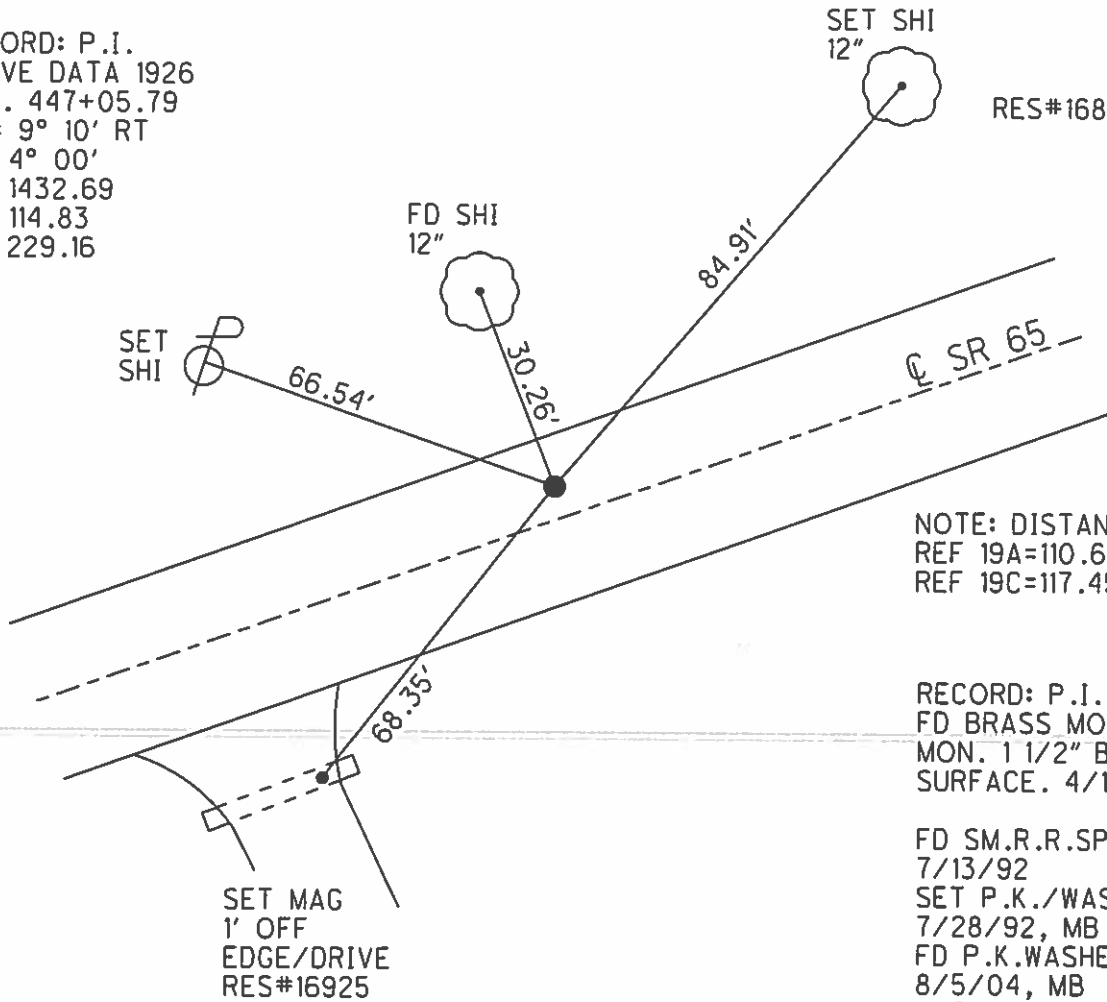
6.0' TO LT EDGE PAVEMENT

S.L.M. 546+93.85

Grid: Northing: 664026.595 Easting: 1632406.197



RECORD: P.I.  
 CURVE DATA 1926  
 STA. 447+05.79  
 $\Delta = 9^\circ 10' RT$   
 $D = 4^\circ 00'$   
 $R = 1432.69$   
 $T = 114.83$   
 $L = 229.16$



RES#16890

NOTE: DISTANCE TO  
 REF 19A=110.65'  
 REF 19C=117.45'

RECORD: P.I.  
 FD BRASS MOBAR  
 MON. 1 1/2" BELOW  
 SURFACE. 4/12/84

FD SM.R.R.SPIKE  
 7/13/92  
 SET P.K./WASHER  
 7/28/92, MB  
 FD P.K.WASHER  
 8/5/04, MB  
 8/5/13, SDC  
 GPS, REFB19  
 SET MAG/WASHER  
 GPS, NEWREFB19  
 9/14/15, JFO

# O.D.O.T. DISTRICT 2 SURVEY OFFICE

PERSONNEL

REFERENCE NO. \_\_\_\_\_

SHEET 32 OF 36

NOTES BARNHISEL

H.C. VAN DUSEN

R.C. KUSZ

**19-A**

**19-B**

**19-C**

BURNETT

DATE 5/25/04  
~~7-13-92~~

WEATHER Cloudy

TEMP. +72°

ROUTE 65

COUNTY WOOD

TOWNSHIP MIDDLETON

SECTION R.T. 45

T 6 N R 10 E

TYPE MONUMENT P.C. PK. WASHER P.I. SH. RR. SPK P.T. PK. WASHER

ON SURFACE - ~~BELOW~~ YES

~~LEFT - C PAV'T. - RIGHT~~ LT 1.6 LT 3.6 RT 1.2

- TO LT EDGE PAVEMENT 84/6.0/9.8

S.L.M. 544+73 ~ 545+83 ~ 547+01

**Fd**  
Reset P.K.'s  
+ WASHERS  
7-28-92  
m.B.

MAUMEE	46
	45
	44
SEC 17	SEC 16



CURVE DATA 1926

P.I. = 447+05.79

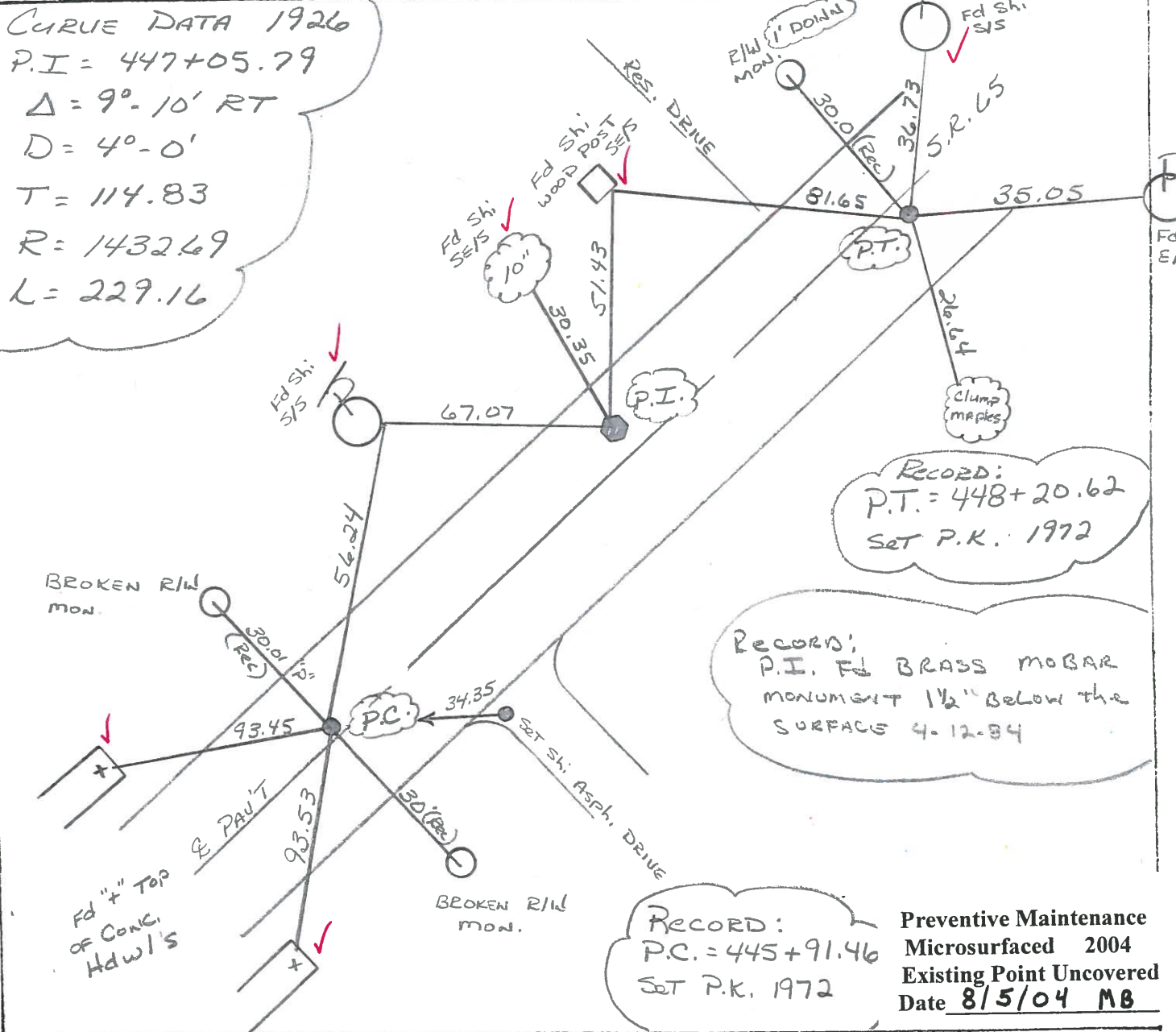
$\Delta = 9^{\circ}-10'$  RT

D = 4°-0'

T = 114.83

R = 1432.69

L = 229.16



RECORD:  
P.T. = 448+20.62  
SET P.K. 1972

RECORD:  
P.I. Fd BRASS MOBAR  
MONUMENT 1 1/2" BELOW THE  
SURFACE 4-12-94

RECORD:  
P.C. = 445+91.46  
SET P.K. 1972

Preventive Maintenance  
Microsurfaced 2004  
Existing Point Uncovered  
Date 8/5/04 MB

SMT-1

O.D.O.T. DISTRICT 2 SURVEY OFFICE

SHEET 32 OF 91

County Wood S.R. 65

Date 4-12-84

Township MIDDLETON

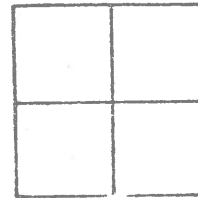
Weather Clear

Section R.T. 45

Temp. 45°

T6N, R10E

Personnel HOFFMAN



19-A

HOUSEHOLDER H.C.

19-B

BARHISEL R.C.

19-C

CURVE DATE 1926  
 P.I. STA = 447+05.79  
 $\Delta = 9^{\circ}-10'$  RT.  
 $D = 4^{\circ}-0'$   
 $T = 114.83$   
 $R = 1432.69$   
 $L = 229.16$

SLM 544+73  
 Fd P.K. @ SURFACE  
 10' Lt. of & Point  
 8.4' TO LT EP  
 10.6' TO RT EP

Record:  
 P.C. 445+91.46  
 Set P.K. 1972

SET PK/WASHER  
 10-10-84  
 SWH

Fd Broken  
 1/2" mark  
 into STR

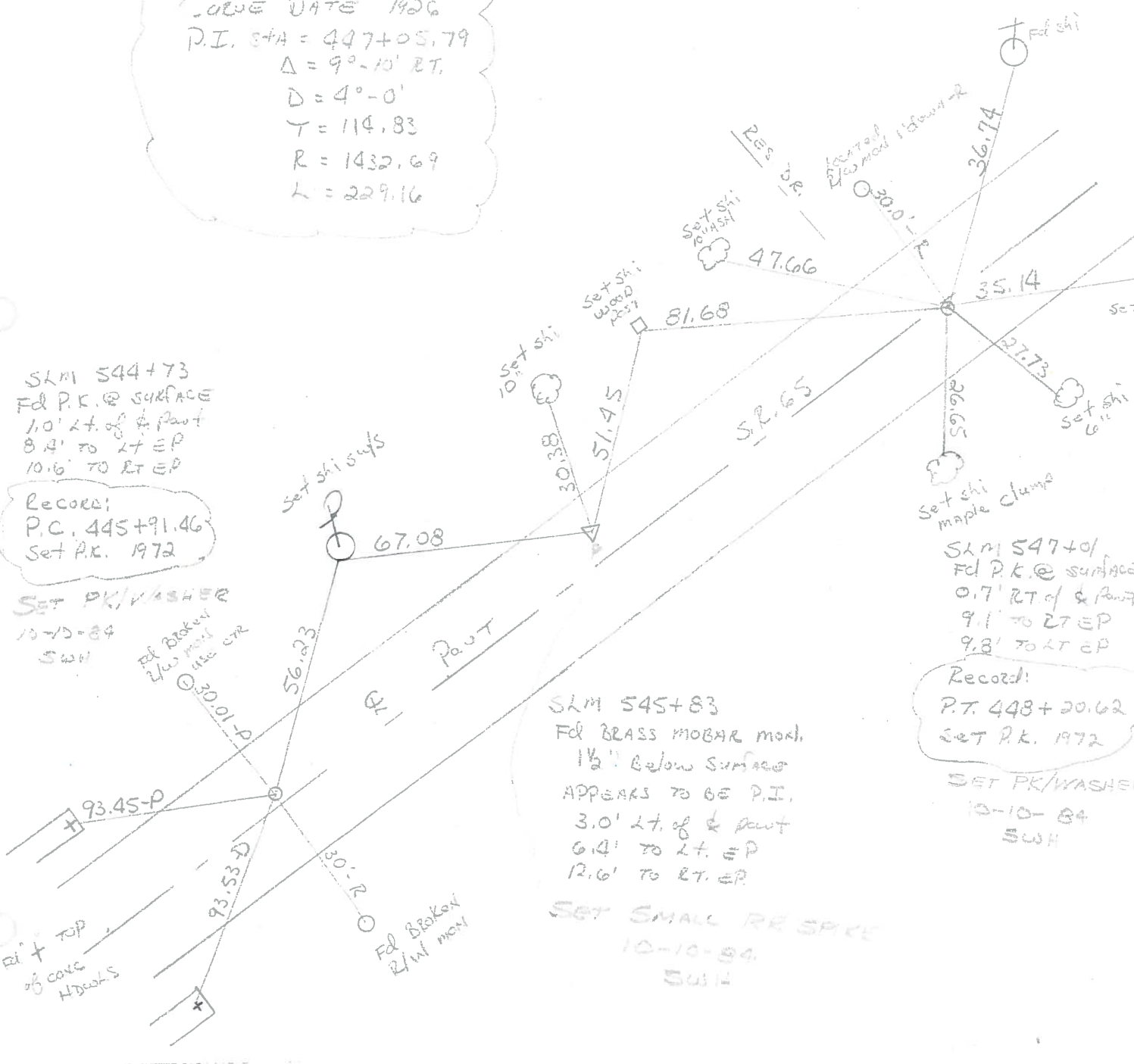
SLM 545+83  
 Fd BRASS MOBAR mark.  
 1 1/2" Below Surface  
 APPEARS TO BE P.I.  
 3.0' Lt. of & Point  
 6.4' TO LT EP  
 12.6' TO RT EP

SET SMALL RR SPIKE  
 10-10-84  
 SWH

SLM 547+01  
 Fd P.K. @ surface  
 0.7' RT of & Point  
 9.1' TO LT EP  
 9.8' TO RT EP

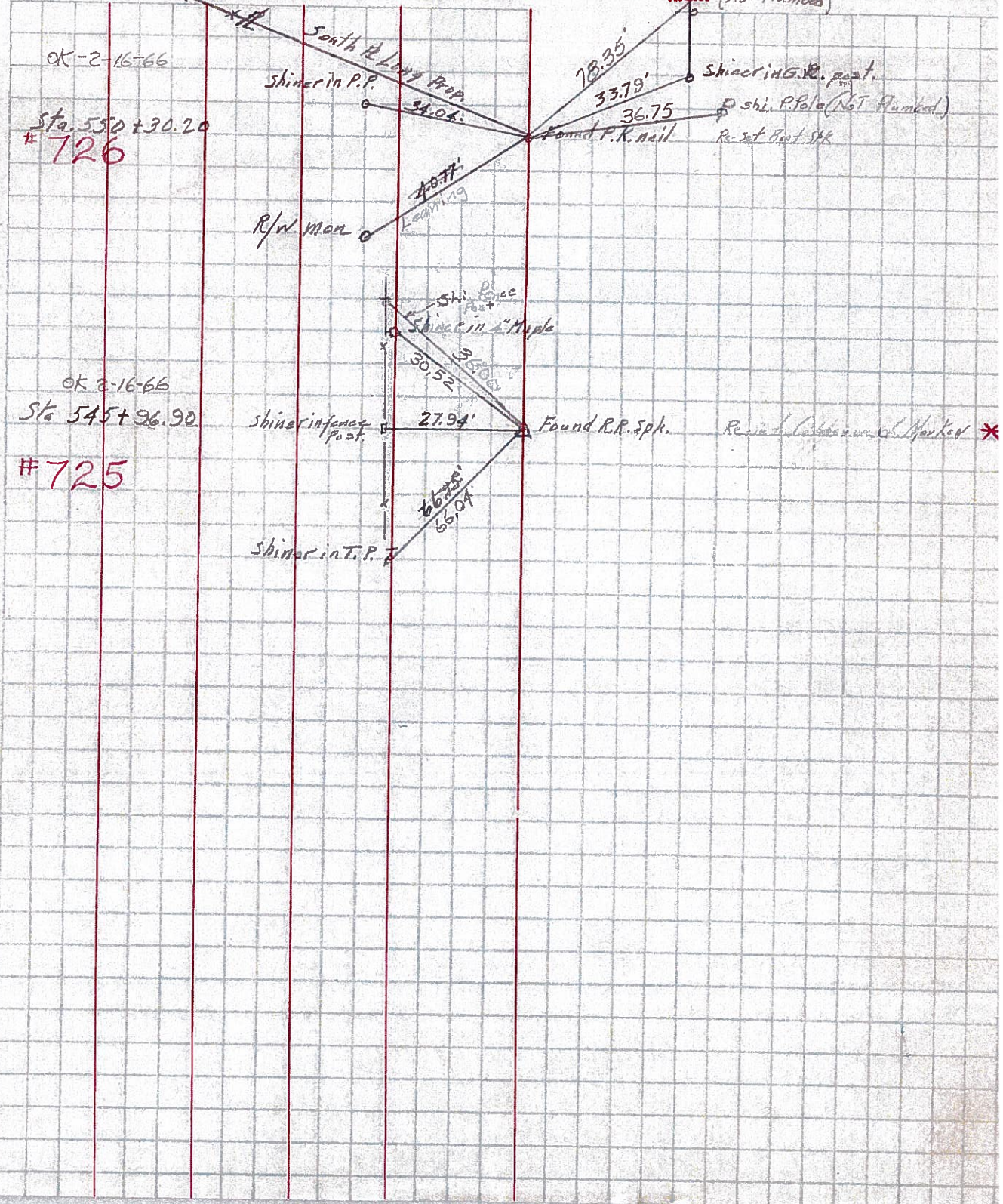
Record:  
 P.T. 448+20.62  
 SET P.K. 1972

SET PK/WASHER  
 10-10-84  
 SWH



PERSONNEL	TITLE	PERSONNEL	TITLE	COUNTY	DATE	WEATHER	TEMP
Jamason	notes			Wood	6-21-59		
Williams					OK 2-16-66		
Phillips				S. R. 65		Cloudy	
				SEC.			

DESCRIPTION *Ties & wit. to Points* LEFT CENTER LINE RIGHT JOB NO.



PERSONNEL	TITLE	PERSONNEL	TITLE	COUNTY	Wood	DATE	June 20, 1966
W. Dehno				S. R.	65	WEATHER	warm
D. Curtis				SEC.		TEMP.	70°±
J. Teal				DESCRIPTION S.R. 65 - Ref Mon. & Control Points - S.R. 64			
J. Brindley				JOB NO. 02994(0)			

