

O.D.O.T. DISTRICT 2 SURVEY OFFICE (USE ONLY)

PERSONNEL

REFERENCE NO. 19 C

SHEET 54 OF 63

NOTES LEU
 H.C. O'DONNELL
 R.C. RHOADES

DATE 4/30/15
 WEATHER CLOUDY
 TEMP. 50°

ROUTE SR 65
 COUNTY WOOD
 TOWNSHIP MIDDLETON
 SECTION RT 45
 T 1 R 10 E

TYPE MONUMENT P.K./WASHER

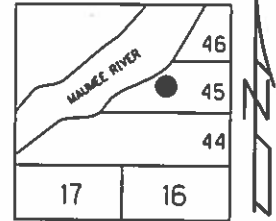
ON SURFACE - ~~BELOW~~ ON

~~LEFT~~ - PAV'T - RIGHT 1.2'

9.8' TO LT EDGE PAVEMENT

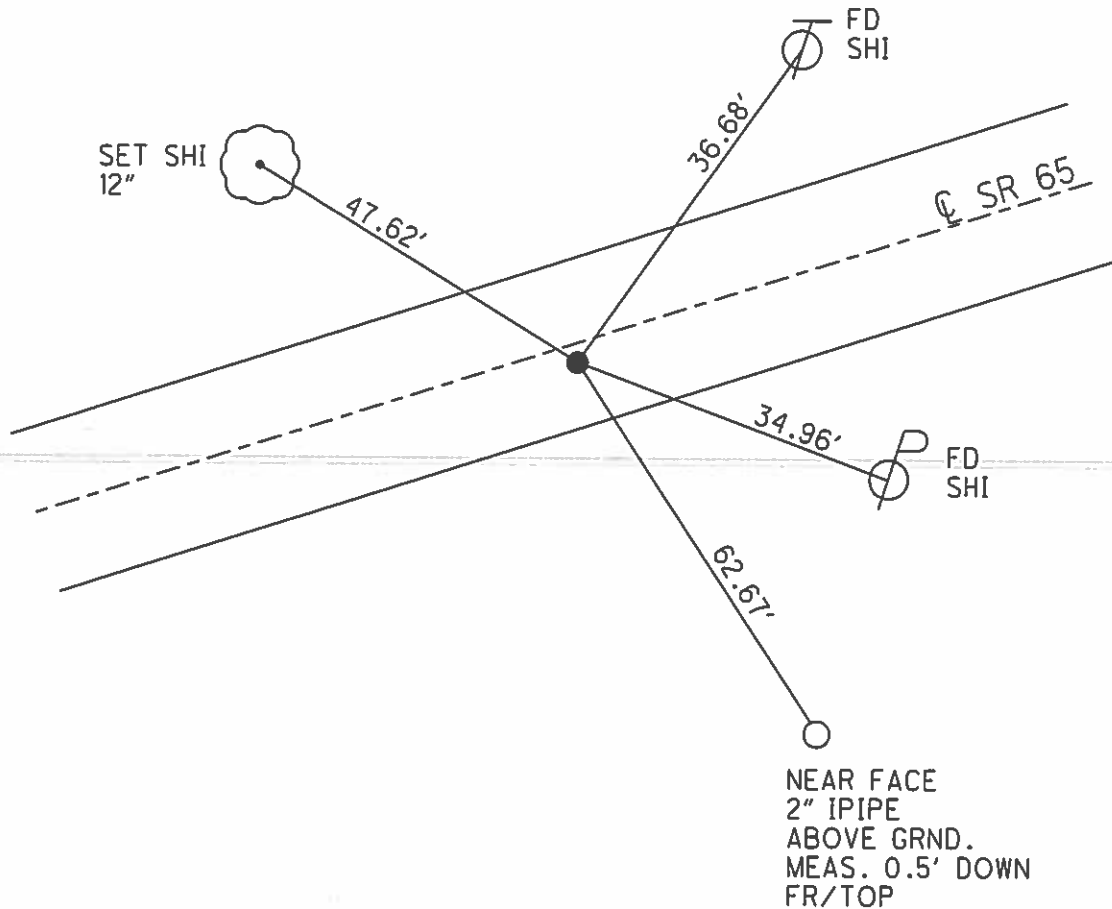
S.L.M. 548+11.17

Grid: Northing: 664064.258 Easting: 1632517.409



RECORD: P.T.
 STA. 448+20.62
 SET P.K.NAIL 1972
 FD P.K./WASHER
 7/13/92
 SET P.K./WASHER
 7/28/92, MB

FD P.K./WASHER
 5/25/04, 8/6/13
 GPS, REFFC19
 9/5/13, SDC
 SET MAG/WASHER
 GPS, NEWREFC19
 9/16/15, JFO



O.D.O.T. DISTRICT 2 SURVEY OFFICE

PERSONNEL

REFERENCE NO. _____

SHEET 32 OF 36

NOTES BARNHISEL

H.C. VAN DUSEN

R.C. KUSZ

19-A

BURNETT

19-B

19-C

DATE 5/25/04
~~7-13-92~~

WEATHER Cloudy

TEMP. +72°

ROUTE 65

COUNTY WOOD

TOWNSHIP MIDDLETON

SECTION R.T. 45

T 6 N R 10 E

TYPE MONUMENT P.C. PK. WASHER P.I. 3/4" BR. SPK P.T. PK. WASHER

ON SURFACE - BELOW YES

LEFT - 0 PAV'T. - RIGHT 1.6 3.6 1.2

TO LT EDGE PAVEMENT 84/6.0/9.8

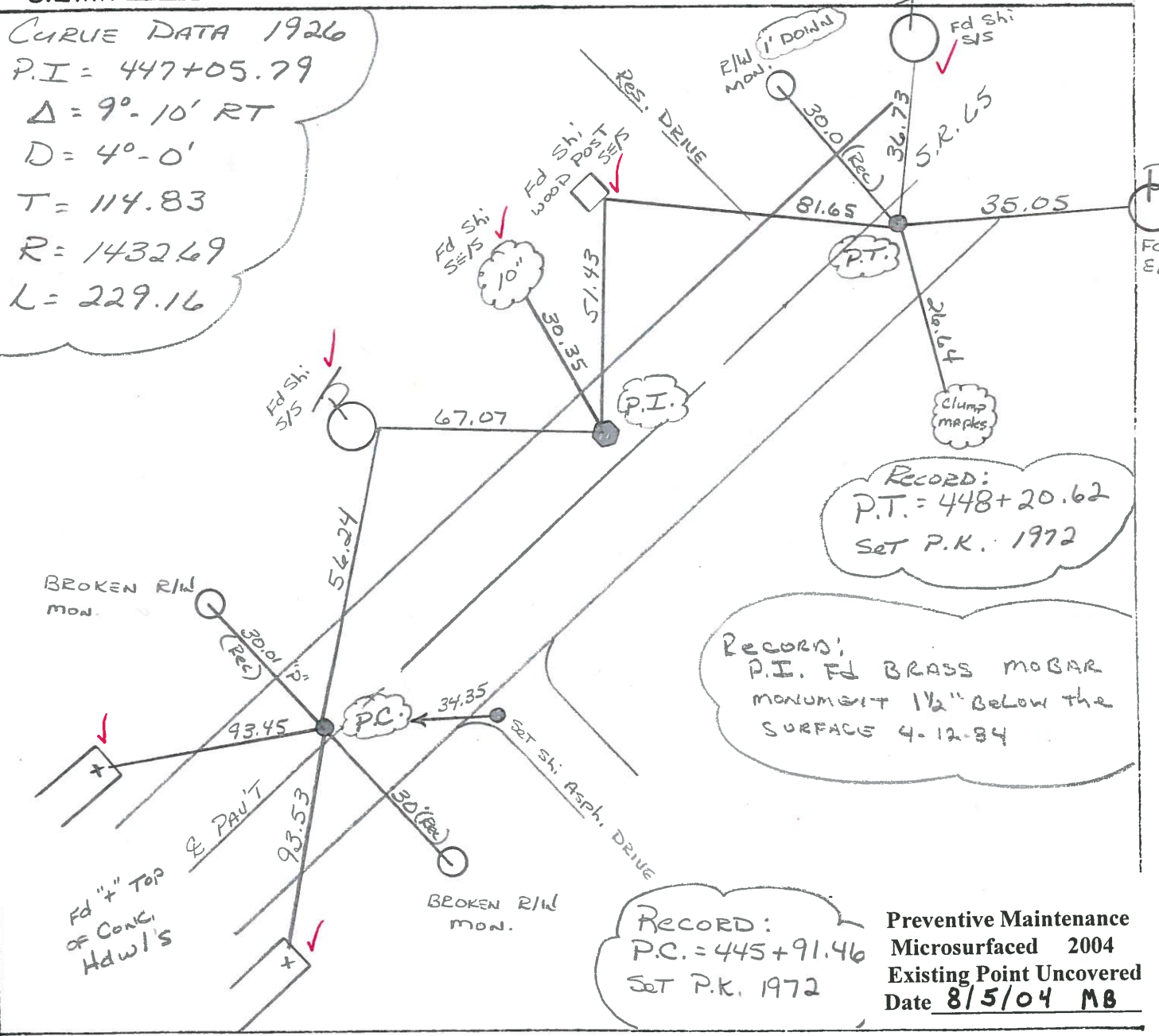
S.L.M. 544+73 ~ 545+83 ~ 547+01

Fd
Reset P.K.'s
+ WASHERS
7-28-92
m.B.

MAUMEE	46
	45
	44
SEC 17	SEC 16



CURVE DATA 1926
 P.I. = 447+05.79
 $\Delta = 9^{\circ} 10' RT$
 $D = 4^{\circ} - 0'$
 $T = 114.83$
 $R = 1432.69$
 $L = 229.16$



Preventive Maintenance
 Microsurfaced 2004
 Existing Point Uncovered
 Date 8/5/04 MB

SMT-1

O.D.O.T. DISTRICT 2 SURVEY OFFICE

SHEET 32 OF 91

County Wood S.R. 65

Date 4-12-84

Township MIDDLETON

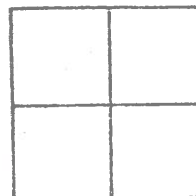
Weather Clear

Section R.T. 45

Temp. 45°

T6N, R10E

Personnel HOFFMAN



- 19-A
- 19-B
- 19-C

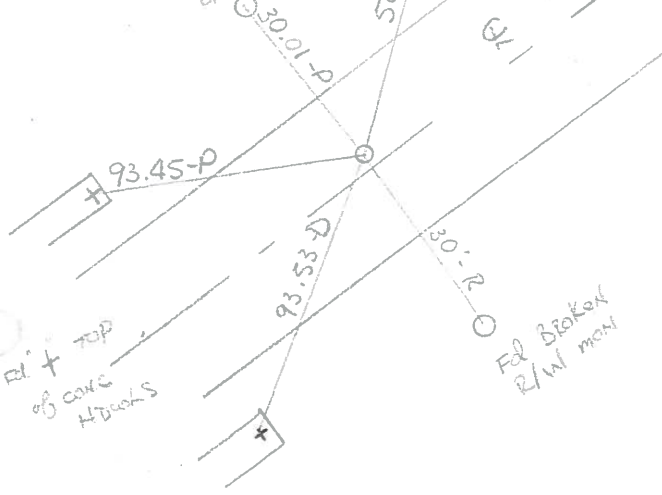
<u>HOUSEHOLDER</u>	<u>H.C.</u>
<u>BARHISEL</u>	<u>R.C.</u>

CURVE DATE 1926
 P.I. STA = 447+05.79
 $\Delta = 9^{\circ}-10'$ RT,
 $D = 4^{\circ}-0'$
 $T = 114.83$
 $R = 1432.69$
 $L = 229.16$

SLM 544+73
 F&P.K. @ SURFACE
 1.0' LT. of & PAWT
 8.4' TO LT. EP
 10.6' TO RT. EP

Records:
 P.C. 445+91.46
 SET P.K. 1972

SET PK/WASHER
 10-10-84
 SWH
 F& Broken
 2 1/2" mod
 USE STR



SLM 545+83
 F& BRASS MOBAR mod.
 1 1/2" Below SURFACE
 APPEARS TO BE P.I.
 3.0' LT. of & PAWT
 6.4' TO LT. EP
 12.6' TO RT. EP

SET SMALL RR SPIKE
 10-10-84
 SWH

SLM 547+01
 F& P.K. @ SURFACE
 0.7' RT. of & PAWT
 9.1' TO RT. EP
 9.8' TO LT. EP
 Records:
 P.T. 448+20.62
 SET P.K. 1972

SET PK/WASHER
 10-10-84
 SWH

PERSONNEL	TITLE	PERSONNEL	TITLE	COUNTY	Wood	DATE	11-13-72
BURNSIDE				S. R.	65	WEATHER	Cloudy
SMITH				SEC.	MIDDLETON TWP	TEMP.	+38°
BOWERS							
KIJOWSKI							

DESCRIPTION ESTABLISH & REF & CONTROL POINTS LEFT CENTER LINE RIGHT JOB NO.

