

**O.D.O.T. DISTRICT 2 SURVEY OFFICE (USE ONLY)**

PERSONNEL

REFERENCE NO. 19 D

SHEET 55 OF 63

NOTES LEU

DATE 4/30/15

ROUTE SR 65

H.C. O'DONNELL

WEATHER CLOUDY

COUNTY WOOD

R.C. RHOADES

TEMP. 50°

TOWNSHIP MIDDLETON

SECTION RT 46

T 1 R 10 E

TYPE MONUMENT P.K./WASHER

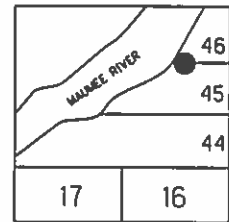
ON SURFACE - ~~BELOW~~ ON

~~LEFT~~ - PAV'T - RIGHT 3.7'

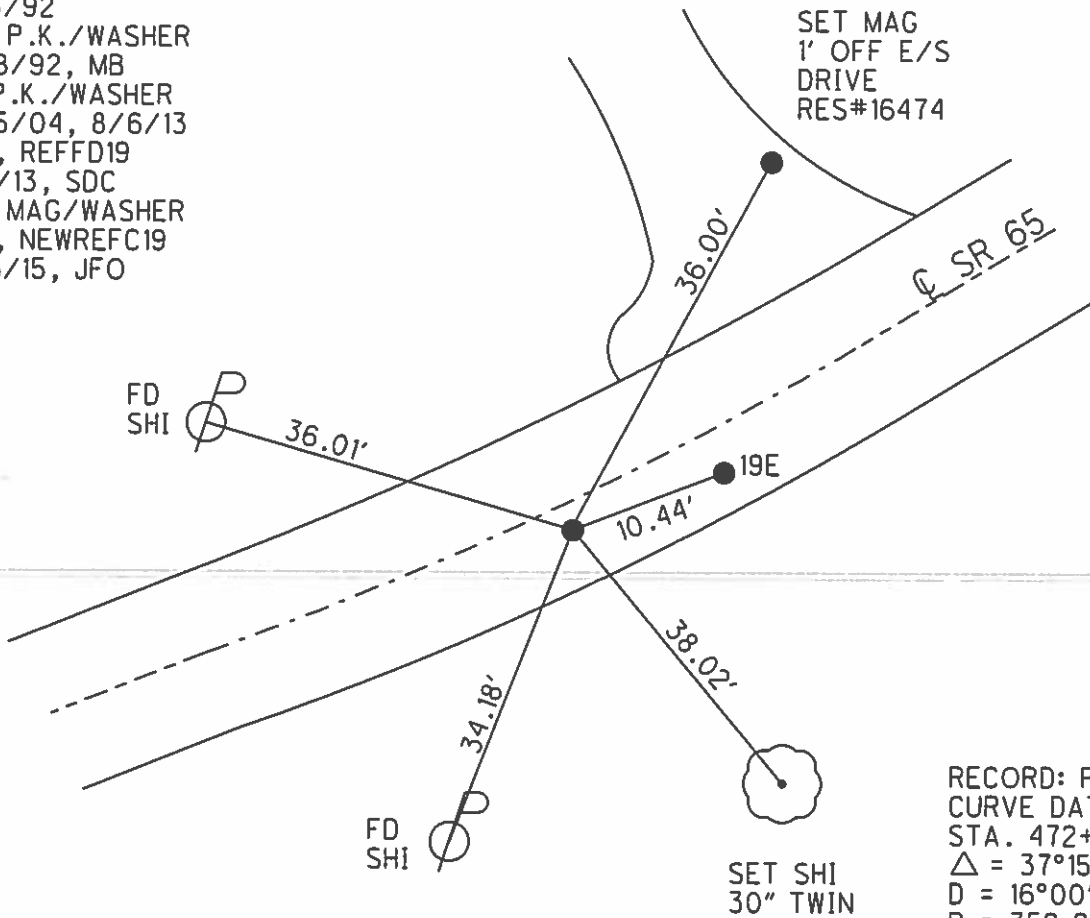
5.7' TORT EDGE PAVEMENT

S.L.M. 570+48.94

Grid: Northing: 664744.558 Easting: 1634649.232



RECORD: P.C.  
 STA. 471+01.13  
 SET P.K.NAIL 1972  
 FD P.K./WASHER  
 7/13/92  
 SET P.K./WASHER  
 7/28/92, MB  
 FD P.K./WASHER  
 5/25/04, 8/6/13  
 GPS, REFFD19  
 9/5/13, SDC  
 SET MAG/WASHER  
 GPS, NEWREFC19  
 9/16/15, JFO



RECORD: P.I.  
 CURVE DATA 1926  
 STA. 472+22.15  
 $\Delta = 37^{\circ}15' LT$   
 $D = 16^{\circ}00'$   
 $R = 359.27$   
 $T = 121.02$   
 $L = 232.81$

# O.D.O.T. DISTRICT 2 SURVEY OFFICE

PERSONNEL

REFERENCE NO. \_\_\_\_\_

SHEET 33 OF 36

NOTES BARNHISEL

5/25/04

H.C. VAN DUSEN

DATE 7-13-92

ROUTE 65

R.C. KUSZ

WEATHER Cloudy

COUNTY Wood

BURNETT

TEMP. +72°

TOWNSHIP MIDDLETON

SECTION R.T. 45+46

PT. A PT. B PT. C Fd

T 6 N 10 E

TYPE MONUMENT P.K.'s + WASHERS

ON SURFACE - ~~BELOW~~ yes yes yes

~~EST - C~~ PAV'T. - RIGHT 3.7 5.5 2.0

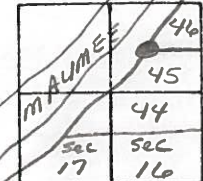
- TO RT EDGE PAVEMENT 5.7/4.0 7.7

S.L.M. 569+41 ~ ? ~ 571+76

19-D

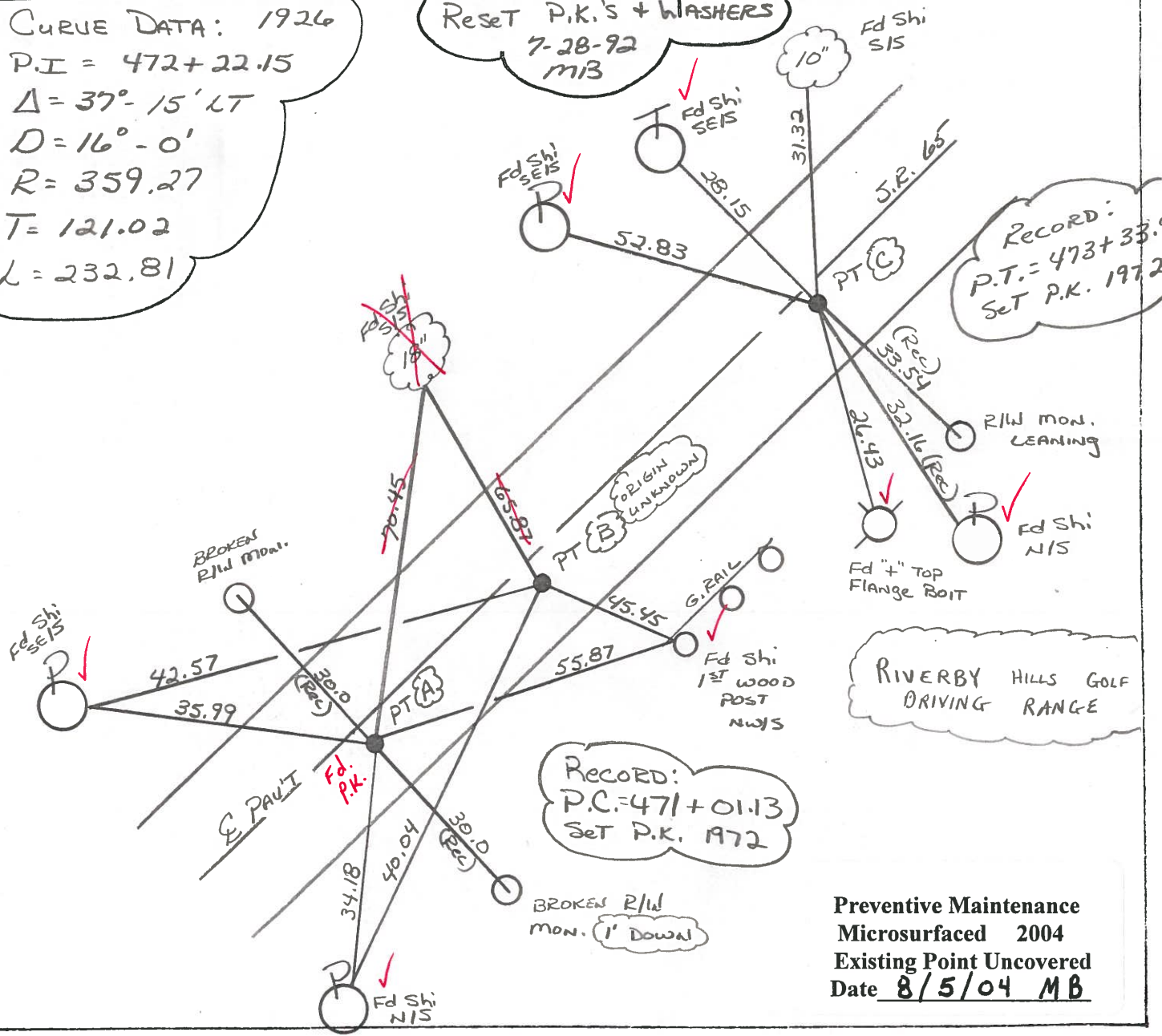
19-E

19-F



CURVE DATA: 1926  
 P.I. = 472+22.15  
 $\Delta = 37^\circ - 15' \text{ LT}$   
 $D = 16^\circ - 0'$   
 $R = 359.27$   
 $T = 121.02$   
 $L = 232.81$

Reset P.K.'s + WASHERS  
 7-28-92  
 m13



Preventive Maintenance  
 Microsurfaced 2004  
 Existing Point Uncovered  
 Date 8/5/04 MB

County Wood S.R. 65

Township MIDDLE TOWNSHIP

Section R. T. 45-46

T6N, R10E

Personnel HOFFMAN

HOUSEHOLDER H.C.

BARNHISEL R.C.

Date 4-12-84

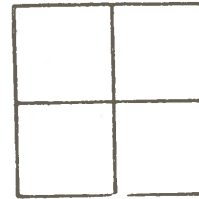
Weather Clear

Temp. 45°

19-D

19-E

19-F



SET PK/WASHER @ ALL 3 POINTS

10-10-84  
SLM

SLM 571+71

Fd SHANK of P.K. Nail  
@ surface  
2.0' RT of & Pawt  
7.7' to RT. EP.  
12.5' to Lt. EP

RECORD!  
P.T. 473+33.94  
Set P.K. 1972

CURVE DATA 1926

P.I. 472+22.15

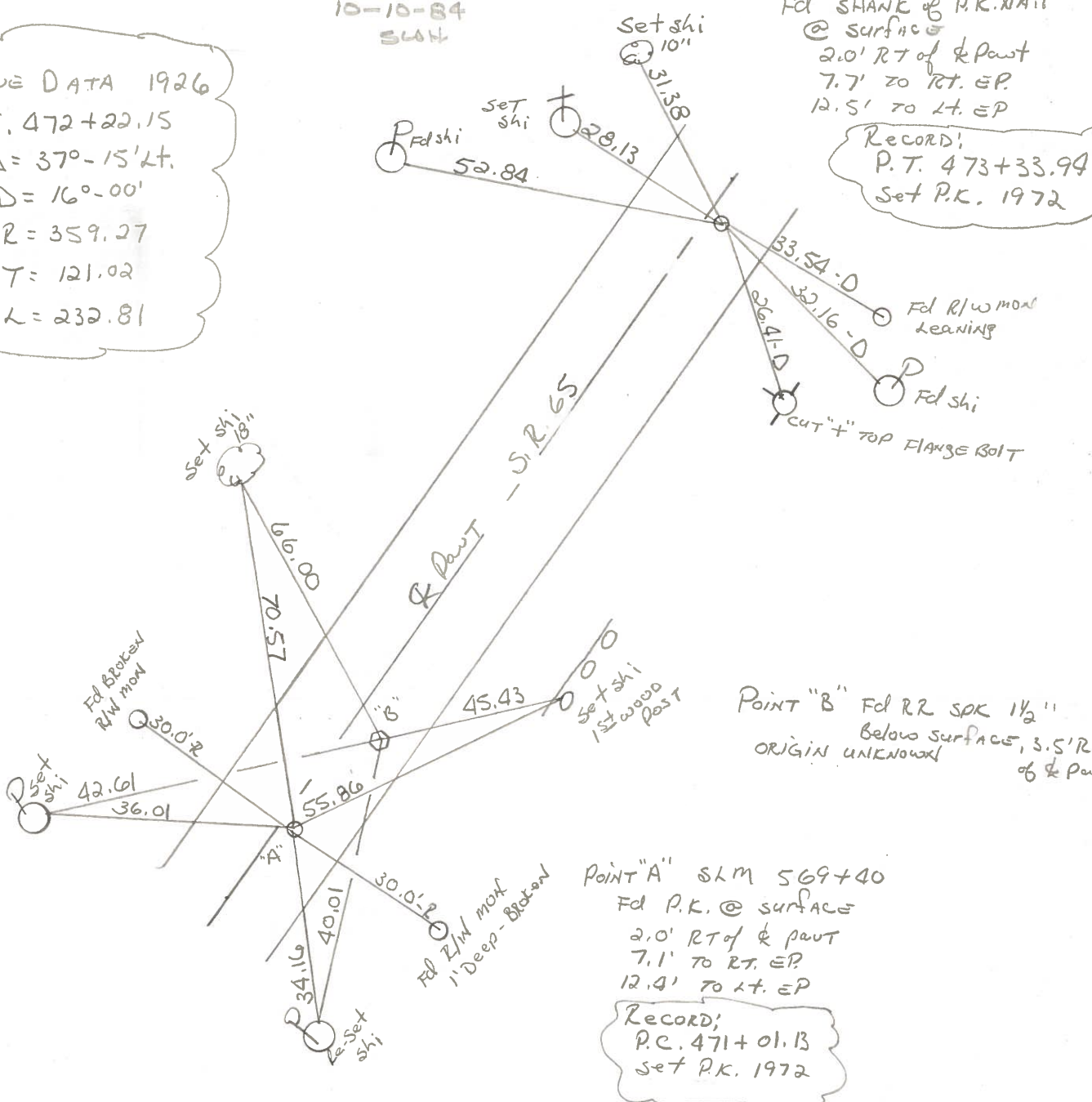
$\Delta = 37^{\circ}-15' Lt.$

D = 16°-00'

R = 359.27

T = 121.02

L = 232.81



POINT "B" Fd RR SPK 1 1/2"  
Below surface, 3.5' R.  
ORIGIN UNKNOWN  
of & Pawt

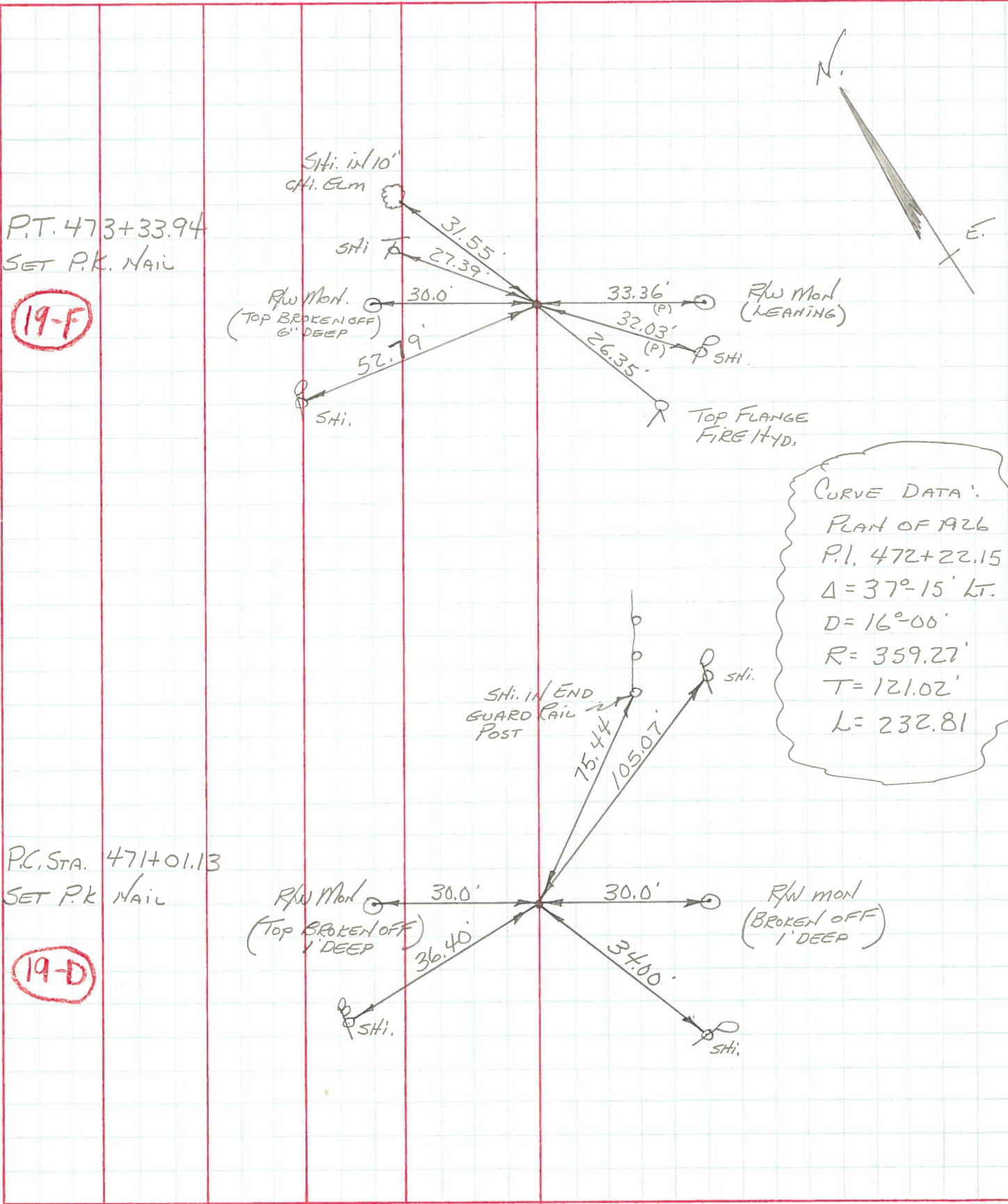
POINT "A" SLM 569+40  
Fd P.K. @ surface  
2.0' RT of & pawt  
7.1' to RT. EP  
12.4' to Lt. EP

RECORD!  
P.C. 471+01.13  
Set P.K. 1972

PERSONNEL TITLE PERSONNEL TITLE  
BURNSIDE \_\_\_\_\_  
SMITH \_\_\_\_\_  
BOWERS \_\_\_\_\_  
KIOWSKI \_\_\_\_\_

COUNTY WOOD DATE 11-16-72  
 S. R. 65 WEATHER CLOUDY  
 SEC. MIDDLETON TWP TEMP. + 34°

DESCRIPTION ESTABLISH & REF. & CONTROL POINTS JOB NO. \_\_\_\_\_



PERSONNEL TITLE PERSONNEL TITLE

COUNTY Wood DATE June 20, 1966

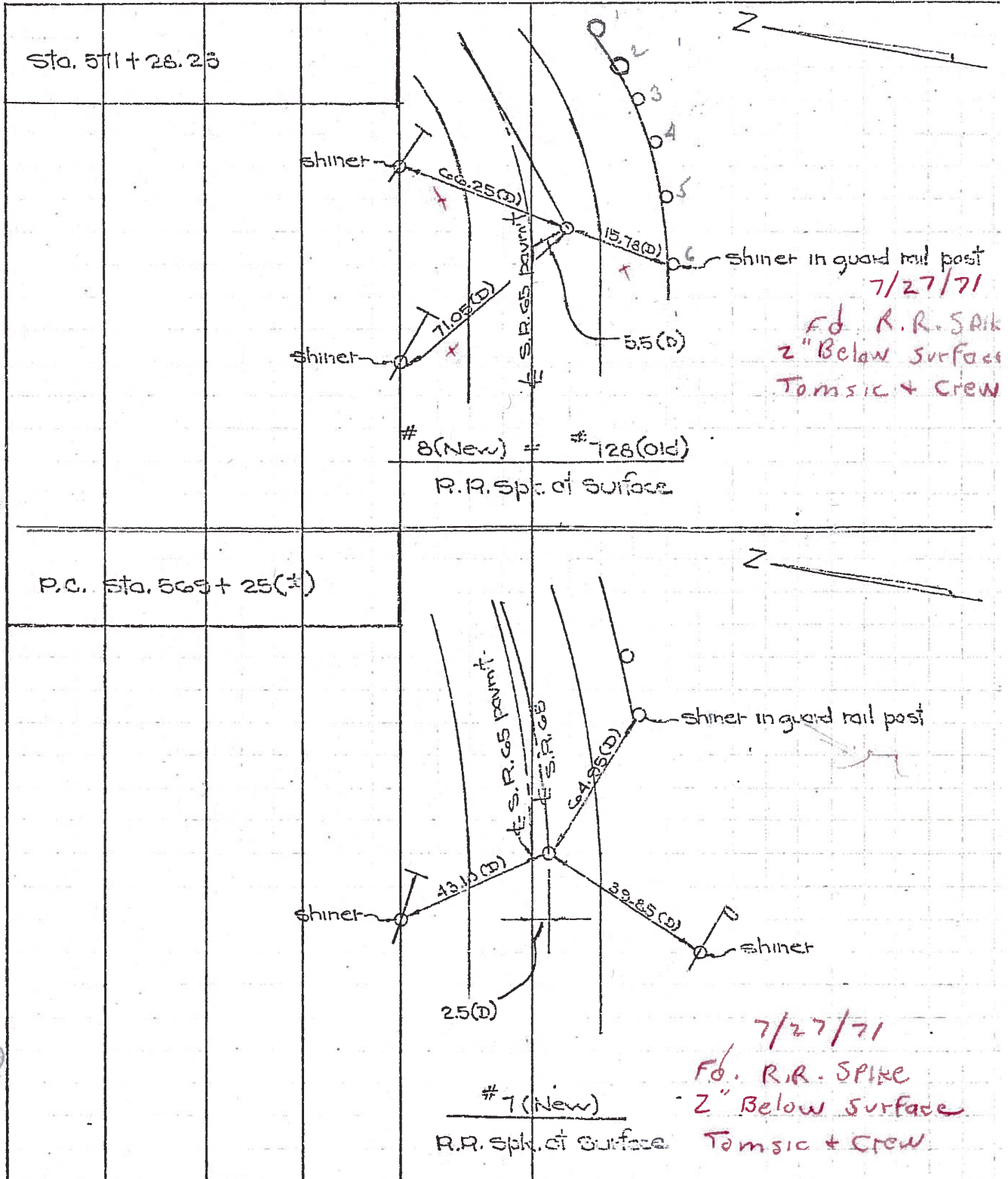
W. Penno \_\_\_\_\_  
D. Curtis \_\_\_\_\_  
J. Teal \_\_\_\_\_

S. R. 65 WEATHER Windy

J. Brindley \_\_\_\_\_

SEC. \_\_\_\_\_ TEMP. 70°±

DESCRIPTION S. R. 65 - Ref. Mon. & Control Points S. R. 582 To S. R. 64 JOB NO. 02994(5)



PERSONNEL TITLE PERSONNEL TITLE

W. Dennis  
D. Curtis  
J. Ted  
J. Brundage

COUNTY Wood DATE June 20, 1966

S. R. 65 WEATHER Warm

SEC. S.R. 552 to S.R. 64 TEMP. 70°F

DESCRIPTION S. R. 65 - Def. Man. & Center Points S.R. 64 JOB NO. 02994(3)

