

O.D.O.T. DISTRICT 2 SURVEY OFFICE (USE ONLY)

PERSONNEL _____ REFERENCE NO. 21 A SHEET 7 OF 7
 NOTES LEU DATE 6/12/14 ROUTE SR 65
 H.C. HOMAN WEATHER CLOUDY COUNTY WOOD
 R.C. RHOADES TEMP. 69° TOWNSHIP MIDDLETON
 WESTFALL SECTION RT 50
 DWG BY RHOADES PID 92088 T 6 N R 10 E

TYPE MONUMENT R.R.SPIKE

ON SURFACE - ~~BELOW~~ ON

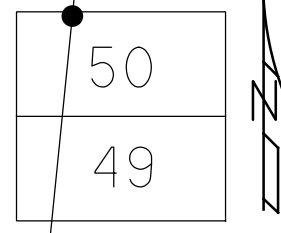
OFFSET ϕ PAVEMENT ON LT : RT

11.4' TO RT EDGE PAVEMENT

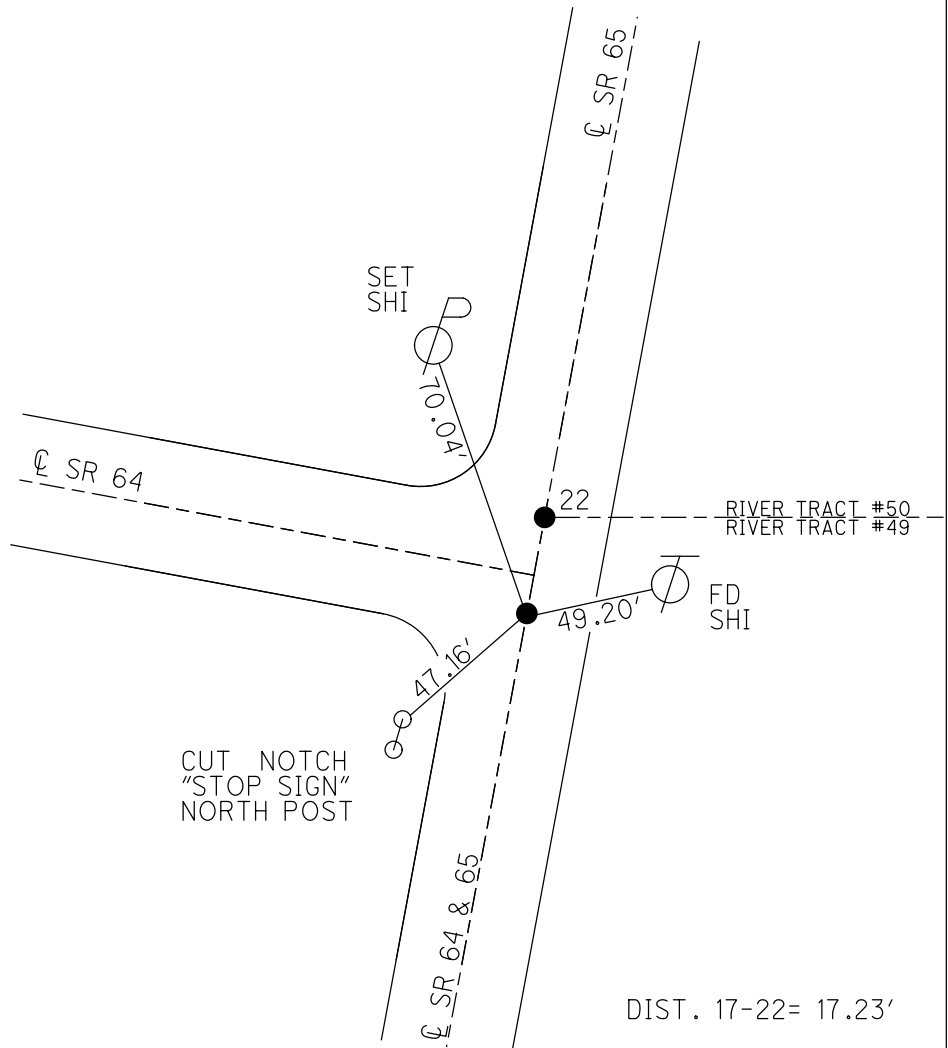
STATION: 633+05

HORZ.DATUM: NAD 83 2011 GEOID: 2018

GRID: NORTHING: 670131.026 EASTING: 1637225.882



RECORD:
 SET SM.R.R.SPIKE
 7/13/76, BURNSIDE
 FD SM.R.R.SPIKE
 1984
 SET P.K./WASHER
 8-7-95, SAH
 FD P.K./WASHER
 6-12-14
 7-28-15, DCH
 FD CMON
 NO DIMPLE
 NEWSTA62723
 12/11/20, JFO



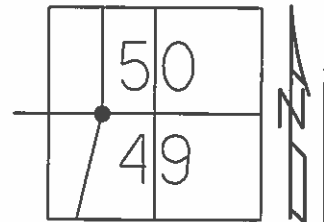
NOTE: SR 64 REF 17

DIST. 17-22= 17.23'

O.D.O.T. DISTRICT 2 SURVEY OFFICE (USE ONLY)

PERSONNEL _____ REFERENCE NO. 21 A SHEET 1 OF 44
 NOTES LEU DATE 06-12-14 ROUTE SR 65
 H.C. HOMAN WEATHER CLOUDY COUNTY WOOD
 R.C. RHOADES TEMP. 69°F TOWNSHIP MIDDLETON
WESTFALL SECTION RT 49&50
T 6 N R 10 E

TYPE MONUMENT RR. SPIKE
 ON SURFACE - ~~BELOW~~ ON
 LEFT - ☉ PAV'T - RIGHT ON
11.4' TO RT EDGE PAVEMENT
 S.L.M. 633+60



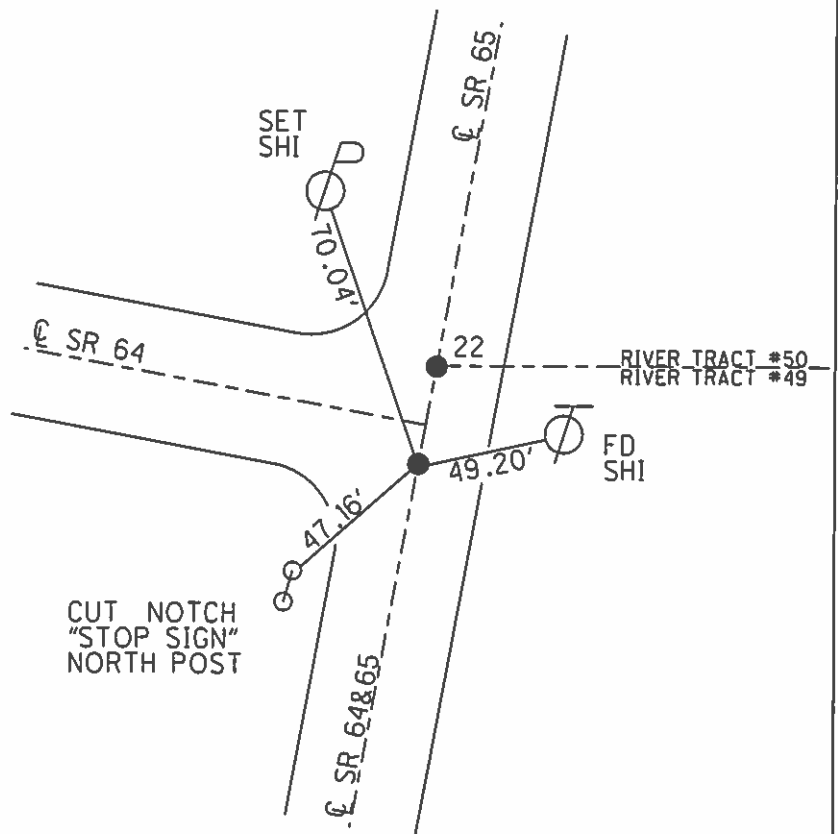
Grid: Northing: 670186.039 Easting: 1637230.583

RECORD 1984
 FD SM. RR.SPK @SURFACE
 11.4' TO RT EP ON ☉ PAVT SR 65

NOTE: DIST. 21A-22= 17.23'

SET PK/WASHER
 8-7-95, SAH

FD P.K./WASHER
 6-12-14
 UNCOVERED
 7-28-15, DCH



O.D.O.T. DISTRICT 2 SURVEY OFFICE

PERSONNEL _____

REFERENCE NO. 22

SHEET 41 OF 91

NOTES VAD DUSEN

H.C. MUSER

R.C. HUSS

DATE 5-24-95

WEATHER CLOUDY

TEMP. +60°F

ROUTE SR 64 & 65

COUNTY Wood

TOWNSHIP Middleton

SECTION River Tract # 49 & 50

T 6 N R 10 E

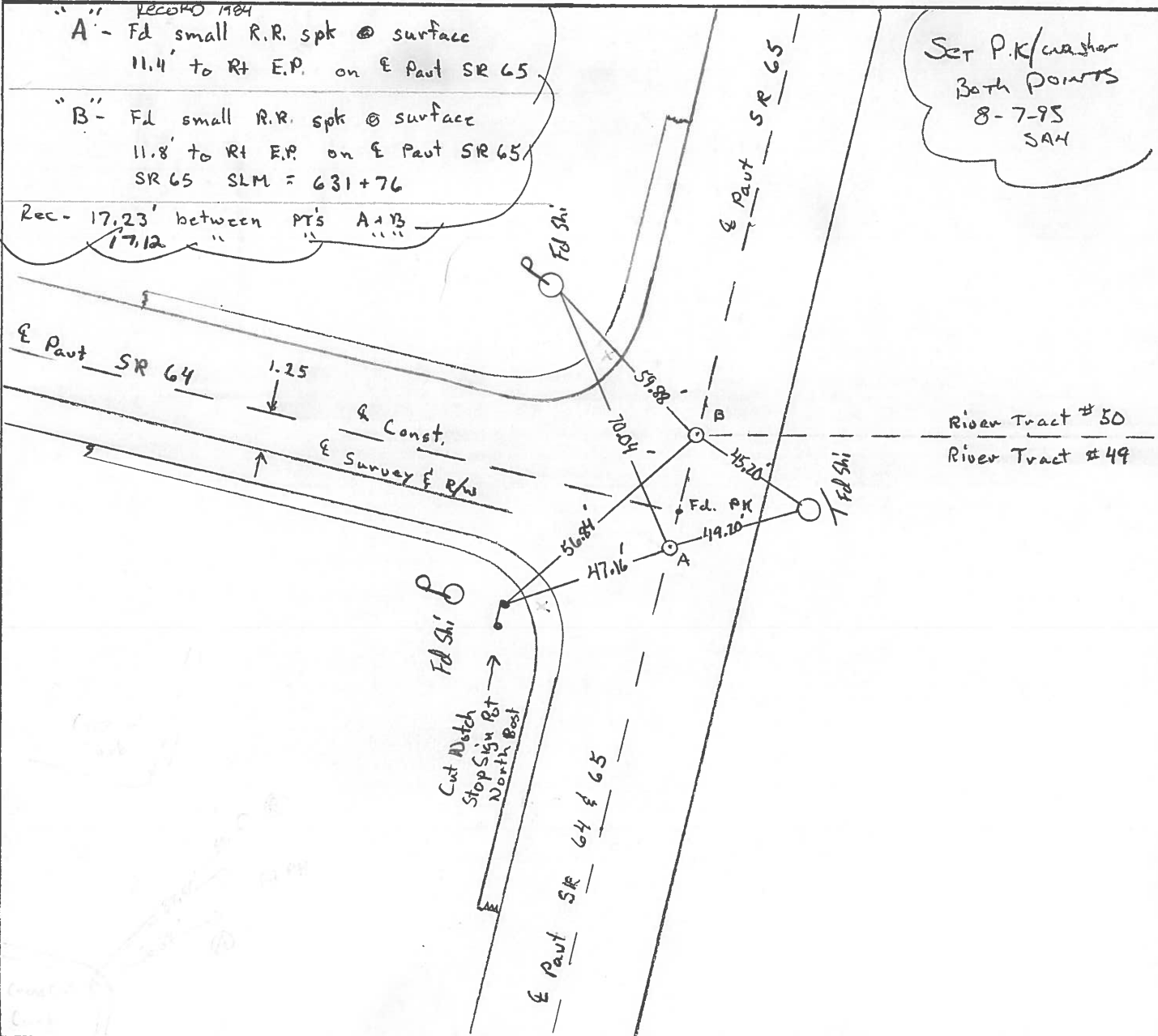
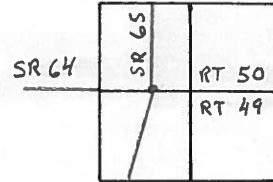
TYPE MONUMENT RR Spike

ON SURFACE - ~~BELOW~~ Yes

~~WEIGHT~~ - PAV'T. - ~~RIGHT~~ SR-65 Yes

TO EDGE PAVEMENT See Notes below

S.L.M. _____



RECORD 1984
 "A" - Fd small R.R. spk @ surface
 11.4' to Rt E.P. on E Pavt SR 65
 "B" - Fd small R.R. spk @ surface
 11.8' to Rt E.P. on E Pavt SR 65
 SR 65 SLM = 631+76

Set P.K/washer
Both points
8-7-95
SAH

County WOOD S.R. 64 & 65

Date 4-13-84

Township MIDDLETON

Weather clear

Section RIVER TRACT # 49 & #50

Temp. 45°

T6N, R10E

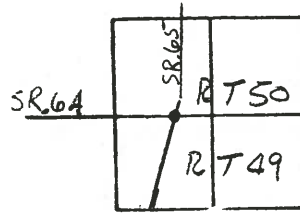
Personnel HOFFMAN

LOEHRKE

HOUSEHOLDER H.C.

BARANISSI R.C.

22



"A" Fd small R.R. spt @ surface
 11.4' TO RT. EP ON & PAVT SR 65

SET PK/WASHER

10-17-84

S.W.H.

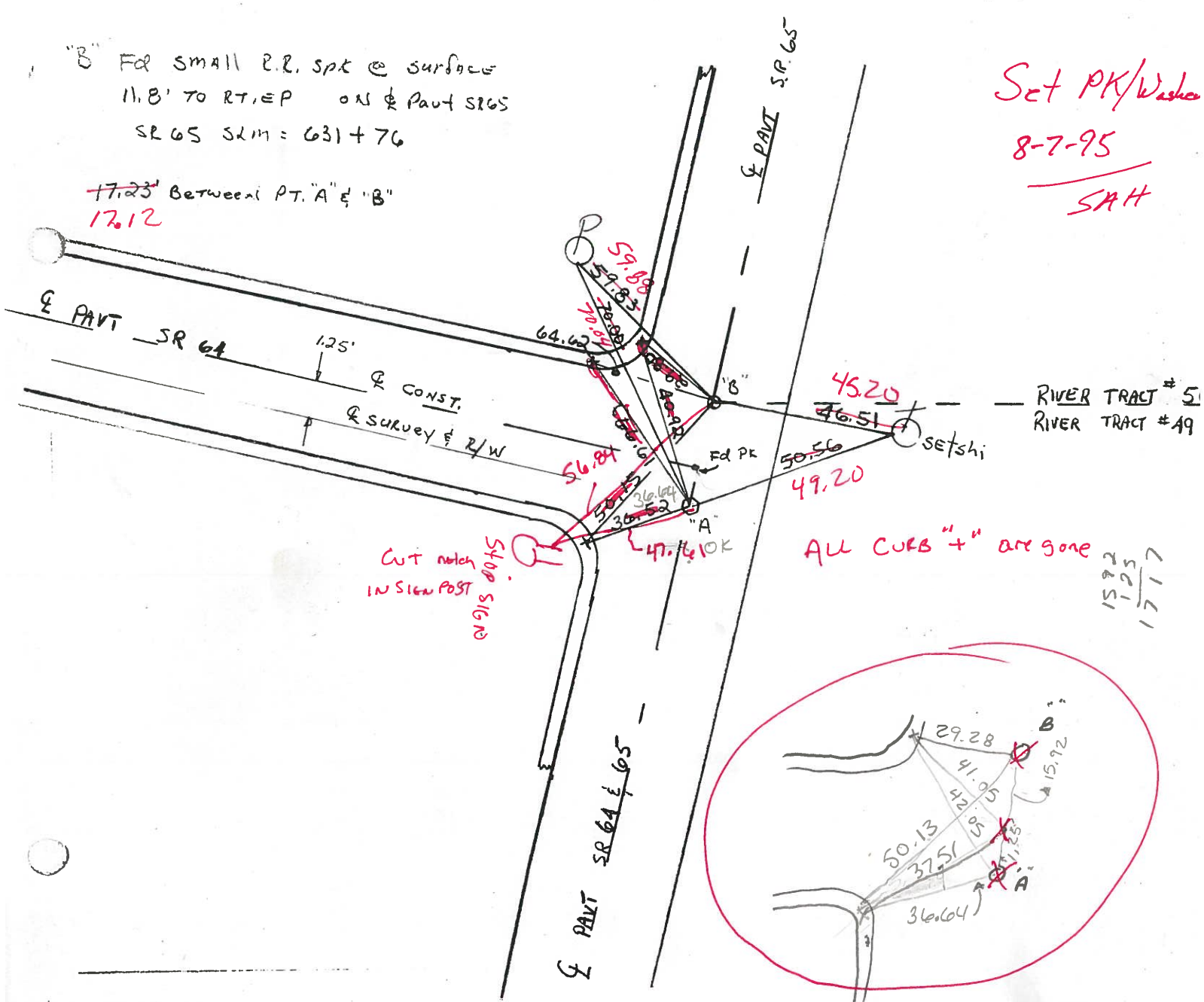
"B" Fd small R.R. spt @ surface
 11.8' TO RT. EP ON & PAVT SR 65
 SR 65 SKM = 631 + 76

Set PK/Washer

8-7-95

SAH

~~17.23~~ Between PT. "A" & "B"
 17.12



County WOOD S.R. 64 & 65

Date 4-13-84

Township MIDDLETON

Weather clear

Section RIVER TRACT # 49 & #50

Temp. 45°

T6N, R10E

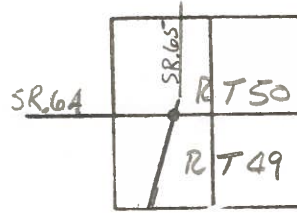
Personnel HOFFMAN

LOHRKE

HOUSEHOLDER H.C.

BARNHISEL R.C.

22



"A" Fd small R.R. spk @ surface
 11.4' TO RT. EP ON & PART SR 65

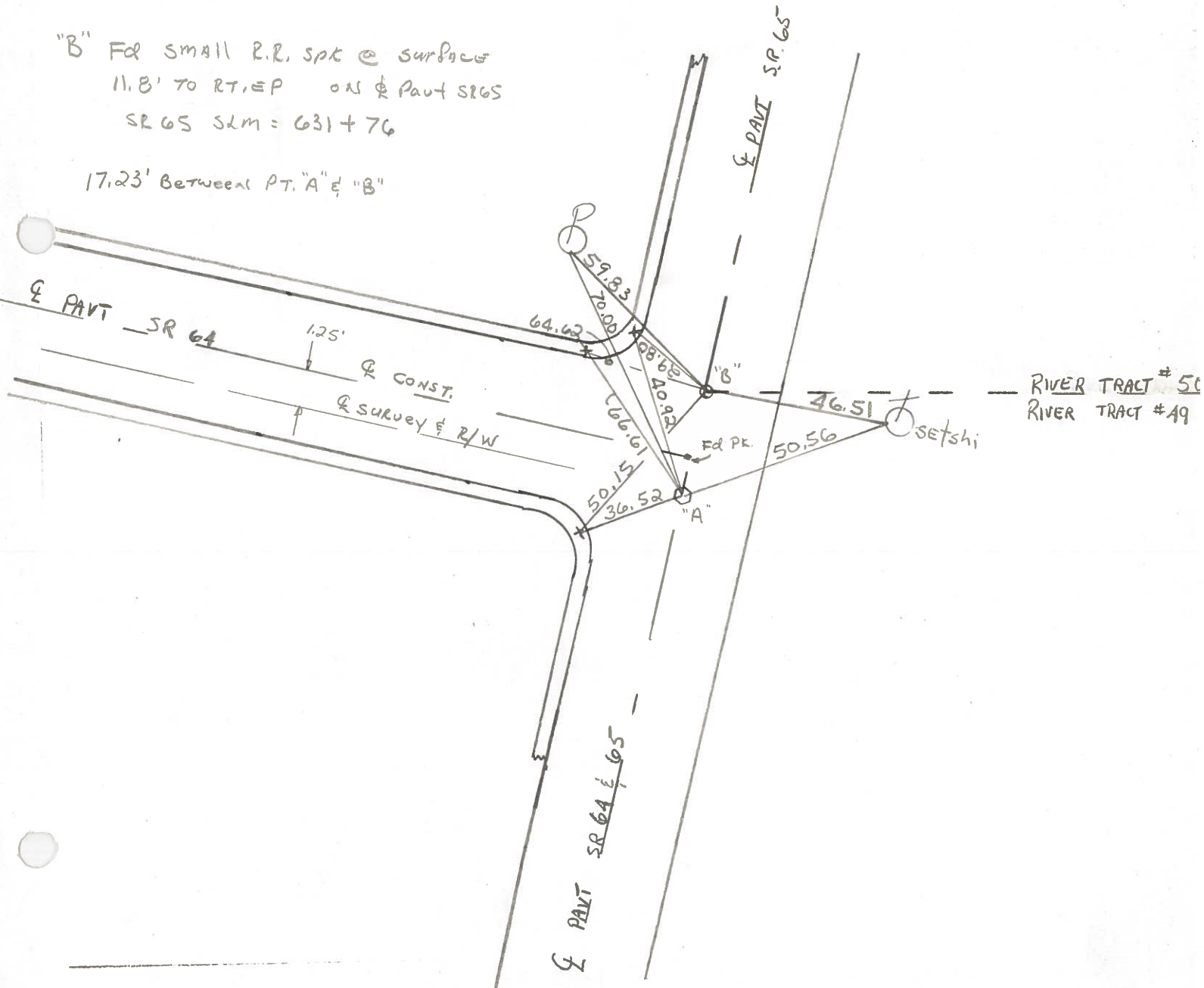
SET PK/WASHER

10-17-84

S.W.H.

"B" Fd small R.R. spk @ surface
 11.8' TO RT. EP ON & PART SR 65
 SR 65 SLM = 631 + 76

17.23' Between PT. "A" & "B"



PERSONNEL	TITLE	PERSONNEL	TITLE
BURNSIDE			
SMITH			
MEAD			

COUNTY WOOD DATE 7-13-76
 S. R. 65 WEATHER CLEAR
 SEC. MIDDLETOWN TWP TEMP. +80°

DESCRIPTION ESTABLISH & CONTROL POINTS

JOB NO. _____

