

O.D.O.T. DISTRICT 2 SURVEY OFFICE (USE ONLY)

PERSONNEL

REFERENCE NO. 22

SHEET 2 OF 44

NOTES LEU

DATE 6/12/14

ROUTE SR 65

H.C. HOMAN

WEATHER CLOUDY

COUNTY WOOD

R.C. RHOADES

TEMP. 69°

TOWNSHIP MIDDLETON

WESTFALL

SECTION RT 49/50

DWG BY RHOADES PID 92088

T 6 N R 10 E

TYPE MONUMENT R.R.SPIKE

~~ON SURFACE~~ - BELOW 3 1/2"

OFFSET CL PAVEMENT ON LT : RT

11.8' TO RT EDGE PAVEMENT

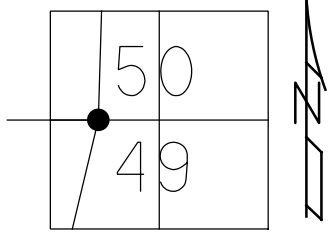
STATION: 633+77.34

HORZ.DATUM: NAD 83 2011

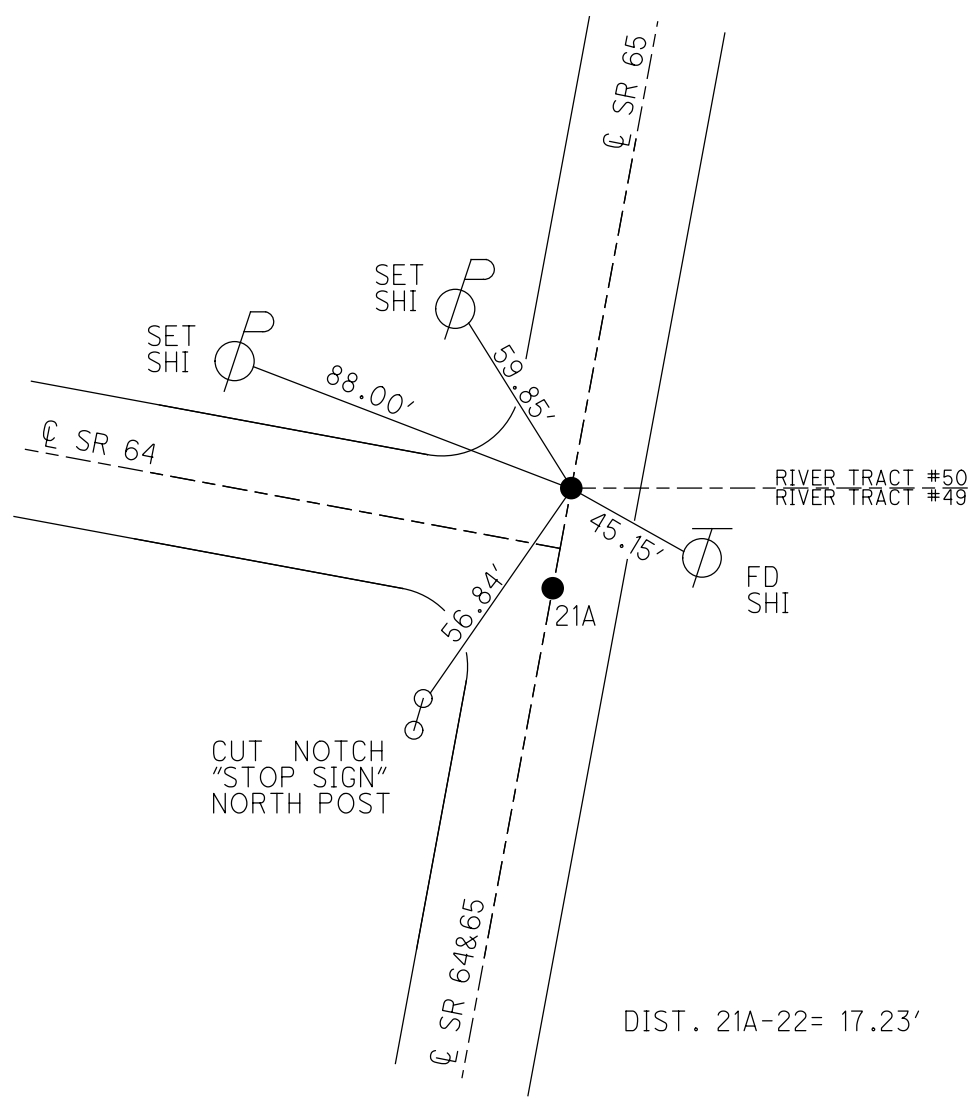
GEOID: 2018

GRID: NORTHING: 699529.350

EASTING: 1637171.966



RECORD:
 SET SM.R.R.SPIKE
 7/13/76, BURSIDE
 FD SM.R.R.SPIKE
 STA. 631+76
 1984
 SET P.K./WASHER
 8-7-95, SAH
 FD P.K./WASHER
 FD SM.R.R.SPIKE
 3 1/2" DOWN
 6-12-14
 7-28-15, DCH
 FD MAG SPIKE
 CLO7
 1/24/18, JFO
 FD MONBOX
 W/1" IPIN
 NEWSTA63360
 12/11/20, JFO



DIST. 21A-22= 17.23'

O.D.O.T. DISTRICT 2 SURVEY OFFICE (USE ONLY)

PERSONNEL _____ REFERENCE NO. 22 SHEET 2 OF 44

NOTES LEU DATE 06-12-14 ROUTE SR 65
 H.C. HOMAN WEATHER CLOUDY COUNTY WOOD
 R.C. RHOADES TEMP. 69°F TOWNSHIP MIDDLETON
WESTFALL SECTION RT 49&50
 T 6 N R 10 E

TYPE MONUMENT RR. SPIKE

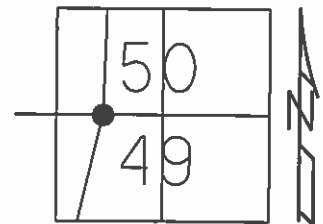
~~ON SURFACE~~ - BELOW 3 1/2"

LEFT - ☉ PAV'T - RIGHT ON

11.8' TO RT EDGE PAVEMENT

S.L.M. 633+77.14

Grid: Northing: 670203.141 Easting: 1637231.738

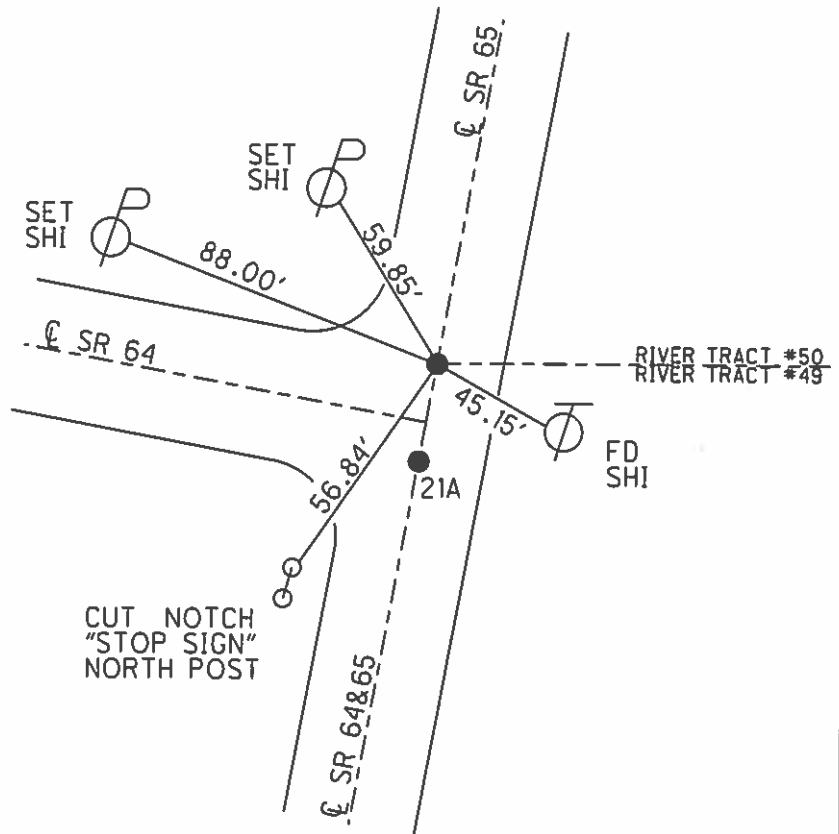


RECORD 1984
 FD SM. RR. SPK @SURFACE
 11.8' TO RT EP ON ☉ PAVT SR 65
 SLM. 631.76

NOTE: DIST. 21A-22= 17.23'

SET PK/WASHER
 8-7-95, SAH

FD P.K./WASHER
 6-12-14
 UNCOVERD
 7-28-15, DCH



CUT NOTCH
 "STOP SIGN"
 NORTH POST

O.D.O.T. DISTRICT 2 SURVEY OFFICE

PERSONNEL _____

REFERENCE NO. 22

SHEET 41 OF 91

NOTES VAD DUSEN

H.C. MUSER

R.C. HUSS

DATE 5-24-95

WEATHER CLOUDY

TEMP. +60°F

ROUTE SR 64 & 65

COUNTY Wood

TOWNSHIP Middleton

SECTION River Tract # 49 & 50

T 6 N R 10 E

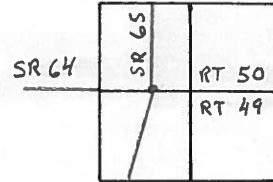
TYPE MONUMENT RR Spike

ON SURFACE - ~~BELOW~~ Yes

~~WEIGHT~~ - PAV'T. - ~~RIGHT~~ SR-65 Yes

TO EDGE PAVEMENT See Notes below

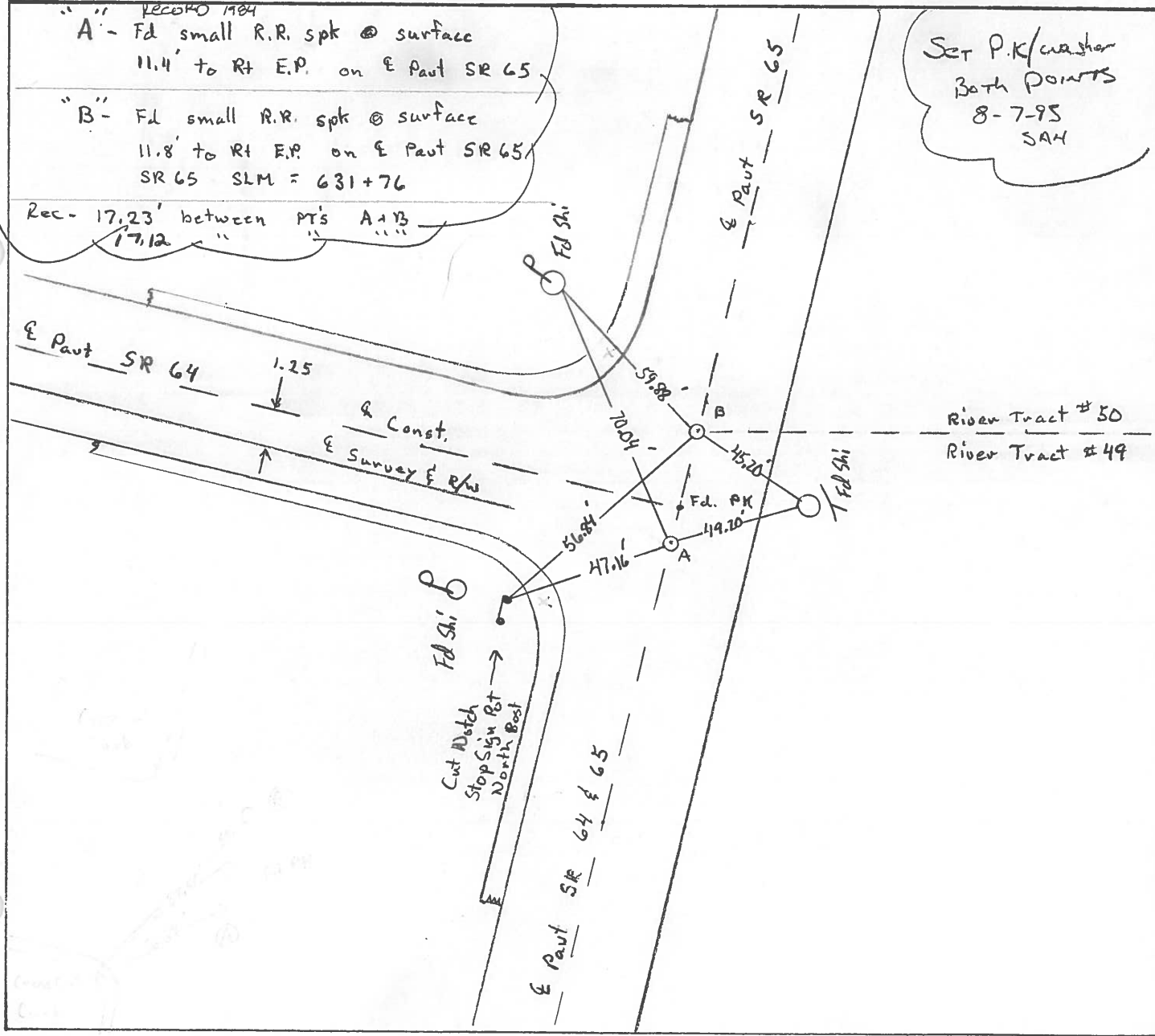
S.L.M. _____



- " " RECORD 1984
- " A - Fd small R.R. spk @ surface
11.4' to Rt E.P. on E Pavt SR 65
- " B - Fd small R.R. spk @ surface
11.8' to Rt E.P. on E Pavt SR 65
SR 65 SLM = 631+76

Rec - 17.23' between PT'S A + B
17.12 "

Set P.K/washer
Both points
8-7-95
SAH



County WOOD S.R. 64 & 65

Date 4-13-84

Township MIDDLETON

Weather clear

Section RIVER TRACT # 49 & #50

Temp. 45°

T6N, R10E

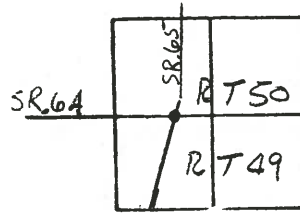
Personnel HOFFMAN

LOEHRKE

HOUSEHOLDER H.C.

BARANISSI R.C.

22



"A" Fd small R.R. spt @ surface
 11.4' TO RT. EP ON & PAVT SR 65

SET PK/WASHER

10-17-84

S.W.H.

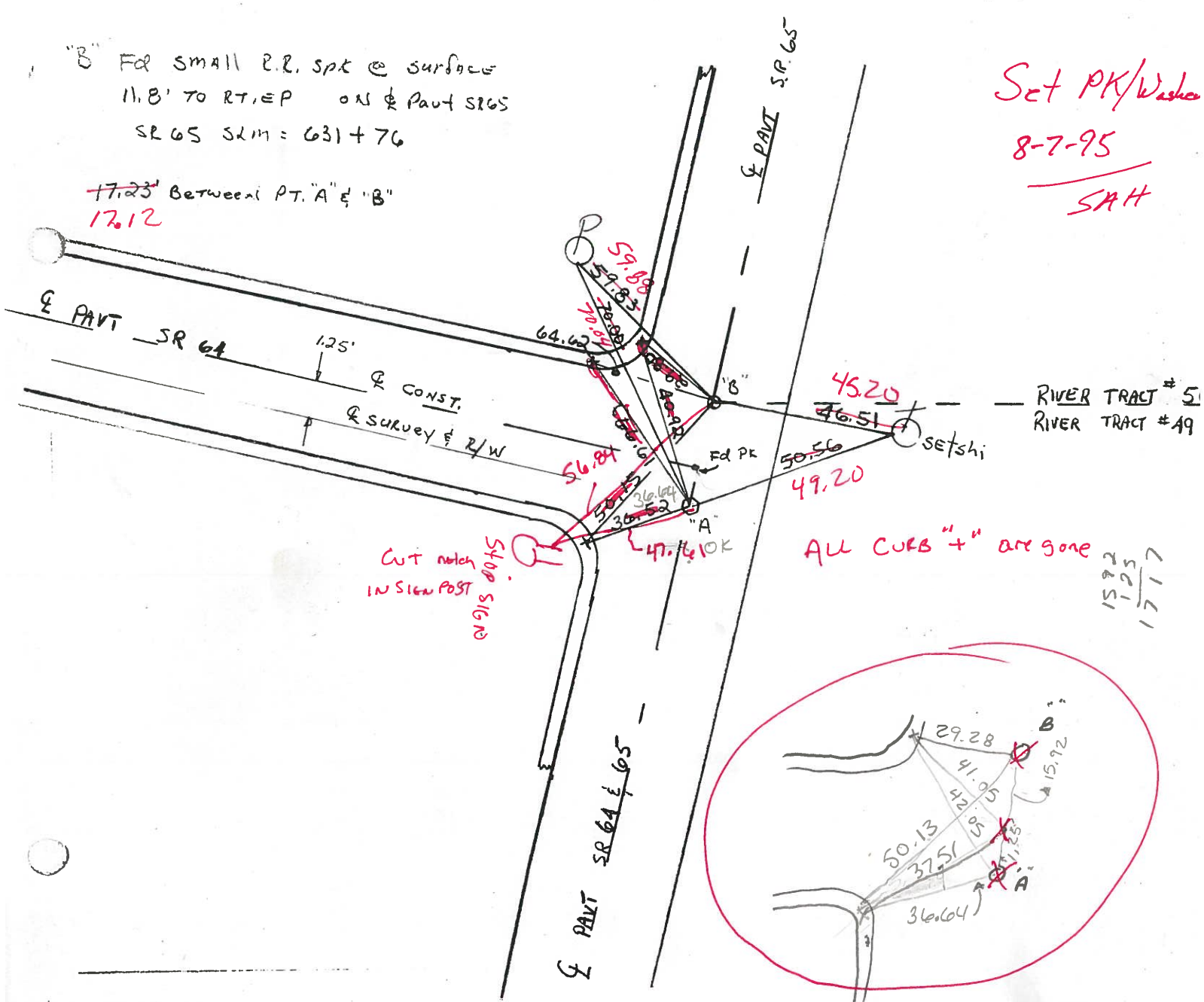
"B" Fd small R.R. spt @ surface
 11.8' TO RT. EP ON & PAVT SR 65
 SR 65 S.M. = 631 + 76

Set PK/Washer

8-7-95

SAH

~~17.23~~ Between PT. "A" & "B"
 17.12



County WOOD S.R. 64 & 65

Date 4-13-84

Township MIDDLETON

Weather clear

Section RIVER TRACT # 49 & #50

Temp. 45°

T6N, R10E

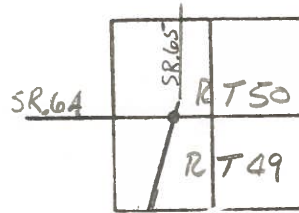
Personnel HOFFMAN

LOHRKE

HOUSEHOLDER H.C.

BARNHISEL R.C.

22



"A" Fd small R.R. spk @ surface
 11.4' TO RT. EP ON & PART SR 65

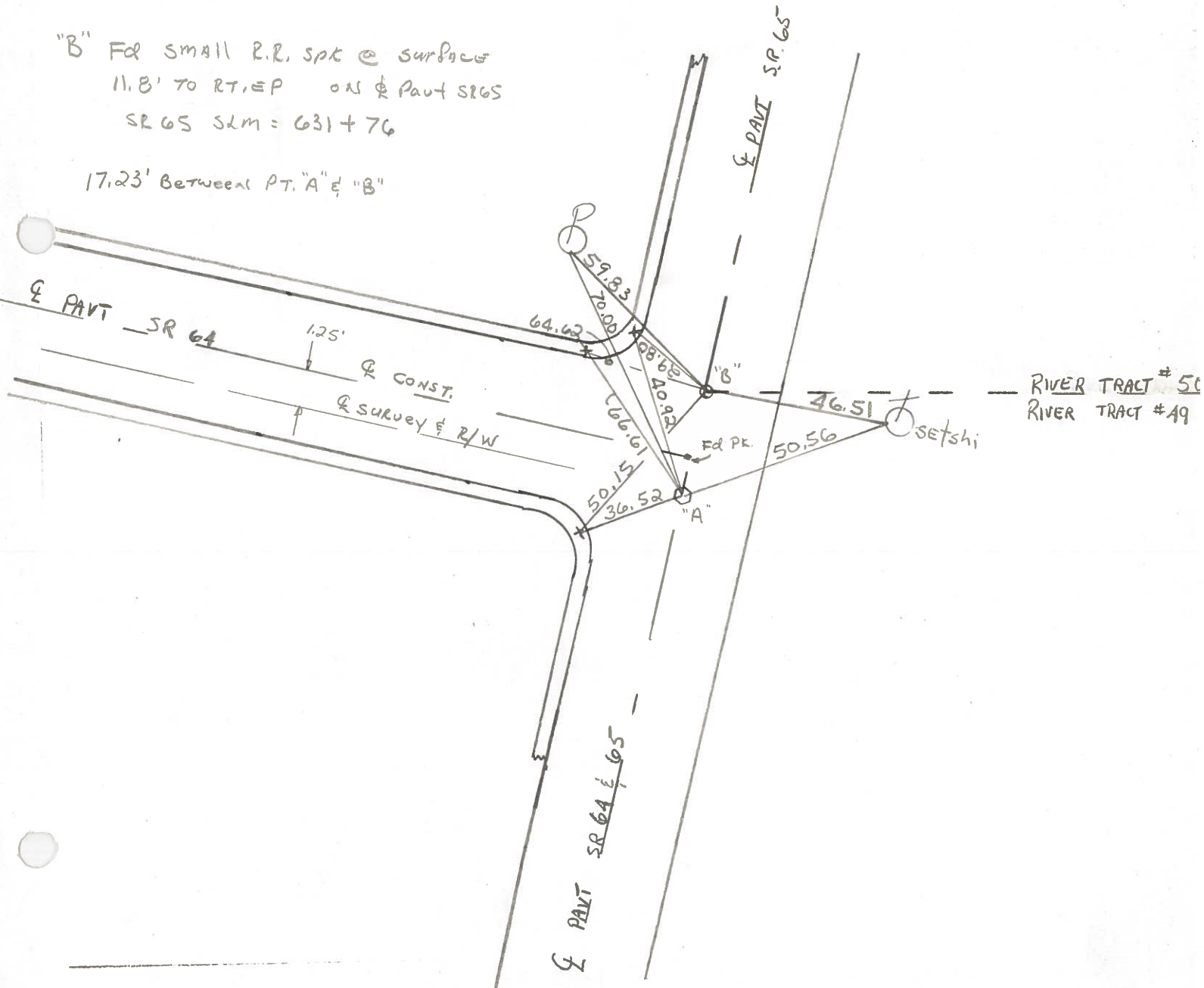
SET PK/WASHER

10-17-84

S.W.H.

"B" Fd small R.R. spk @ surface
 11.8' TO RT. EP ON & PART SR 65
 SR 65 SLM = 631 + 76

17.23' Between PT. "A" & "B"

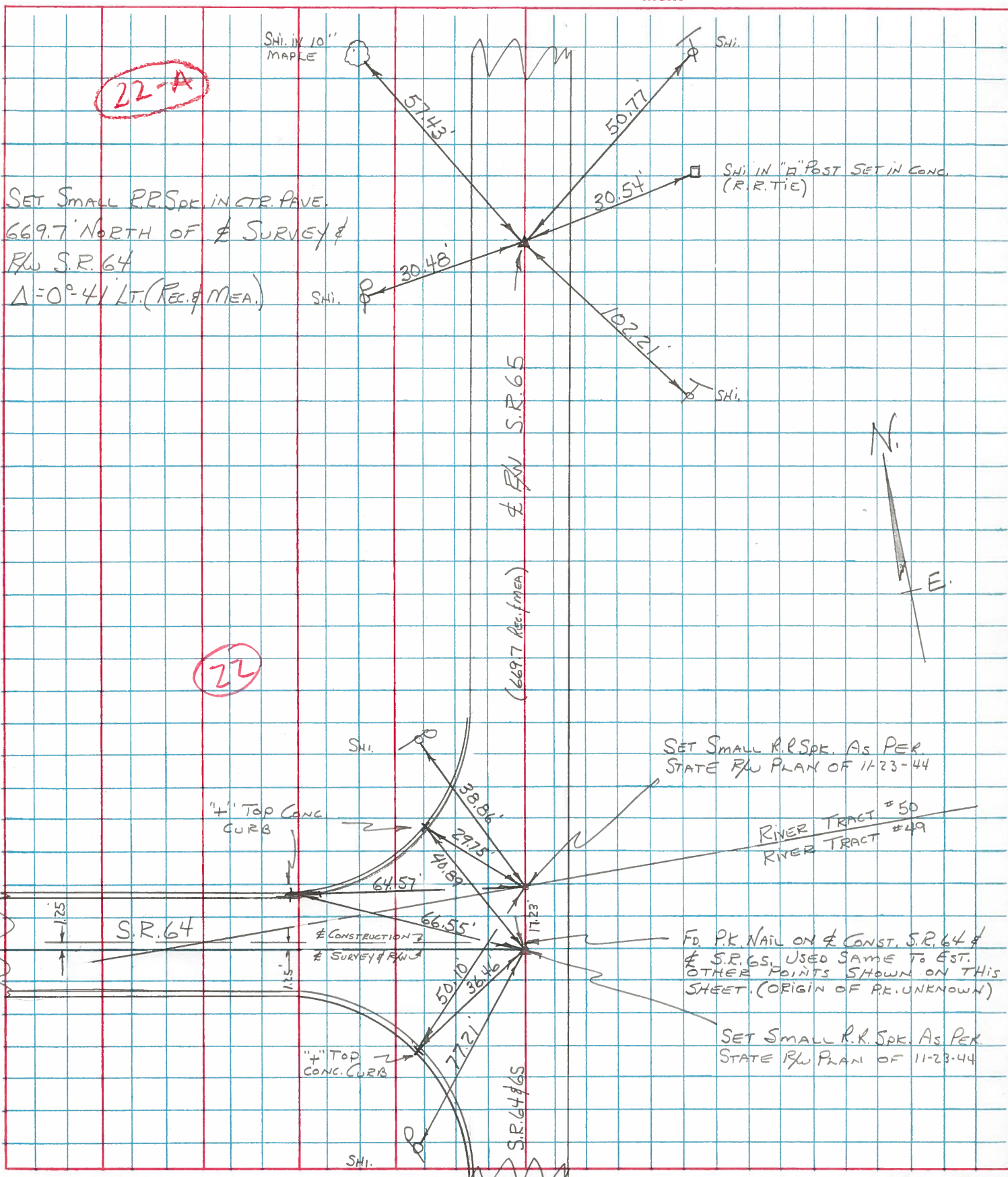


| PERSONNEL | TITLE | PERSONNEL | TITLE |
|-----------|-------|-----------|-------|
| BURNSIDE | | | |
| SMITH | | | |
| MEAD | | | |

COUNTY WOOD DATE 7-13-76
 S. R. 65 WEATHER CLEAR
 SEC. MIDDLETOWN TWP TEMP. +80°

DESCRIPTION ESTABLISH & CONTROL POINTS

JOB NO. _____



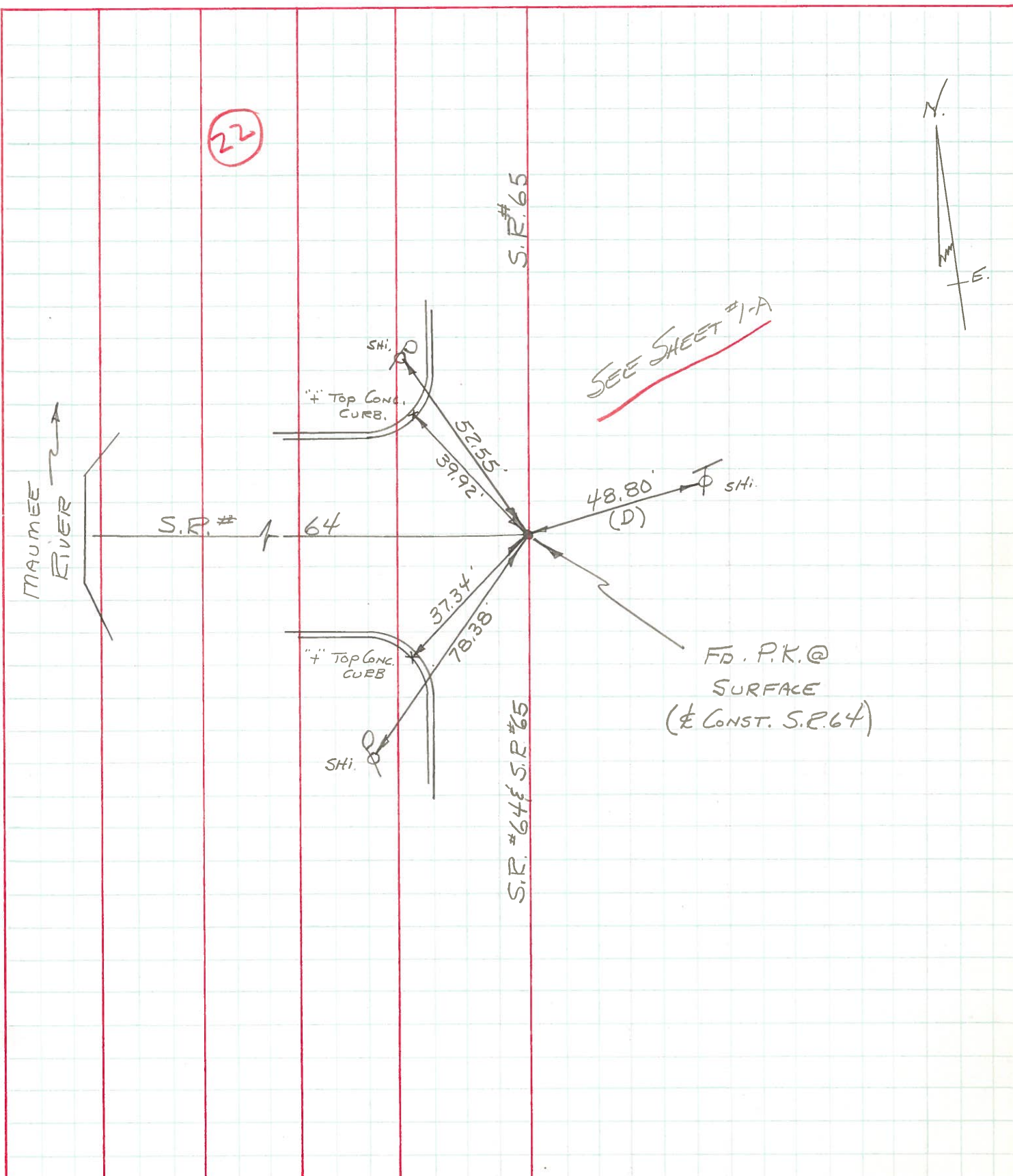
| PERSONNEL | TITLE | PERSONNEL | TITLE |
|-----------|-------|-----------|-------|
| BURNSIDE | | | |
| SMITH | | | |
| ROWERS | | | |

COUNTY Wood DATE 4-18-72

S. R. 65 WEATHER CLEAR

SEC. 11.96 To 15.53 S.L.M. TEMP. +74°

DESCRIPTION _____ MIDDLETON TWP JOB NO. _____



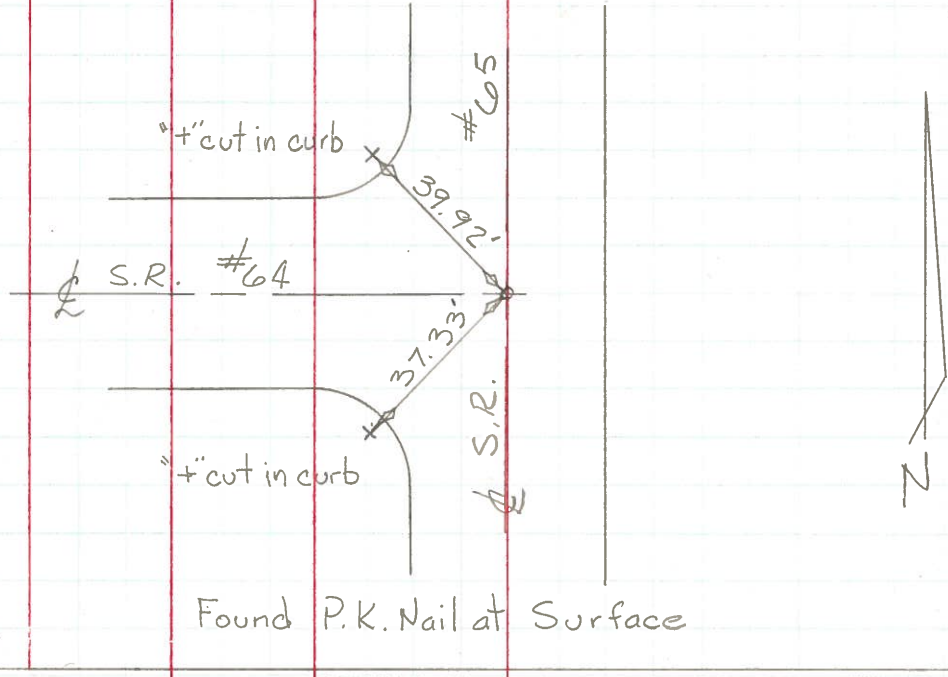
(22)

SEE SHEET #1-A



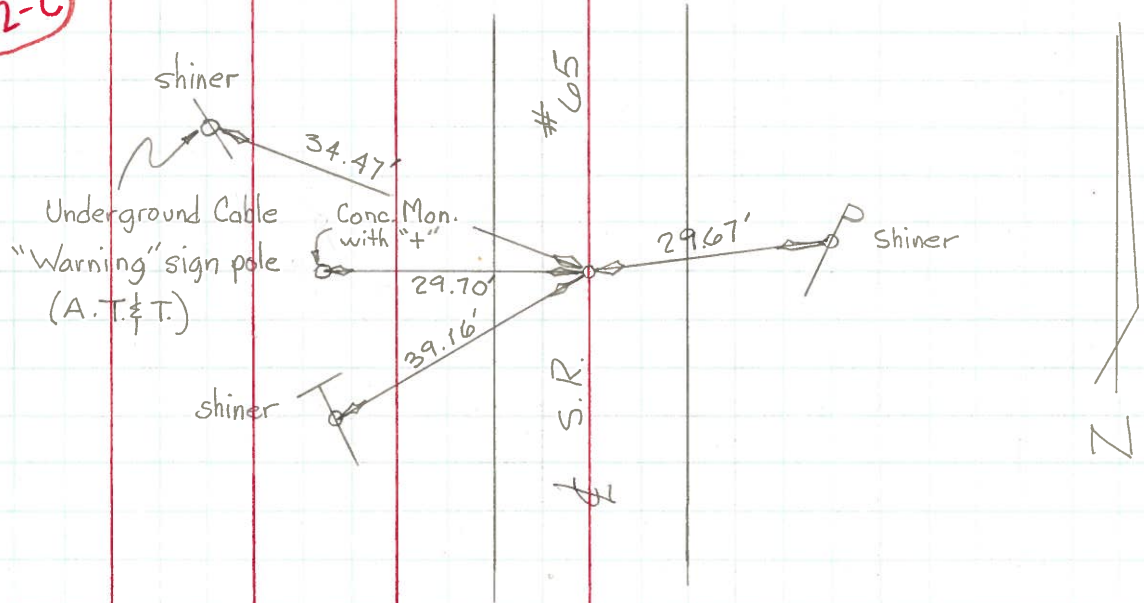
| PERSONNEL | TITLE | PERSONNEL | TITLE | COUNTY | DATE | WEATHER | TEMP. |
|-------------|-------|-----------|-------|-----------------------------------|--------------|---------|-------|
| Tomsic | | Jackson | | Wood | Aug. 3, 1971 | Fair | 70's |
| Neuser | | | | S. R. #65 | | | |
| Vanyo | | | | SEC. | | | |
| Granata | | | | | | | |
| DESCRIPTION | | | | Reference Monumenting on S.R. #65 | JOB NO. | | |

22



Found P.K. Nail at Surface

22-C



Found P.K. Nail at Surface (sta. 65+46±)

PERSONNEL TITLE PERSONNEL TITLE

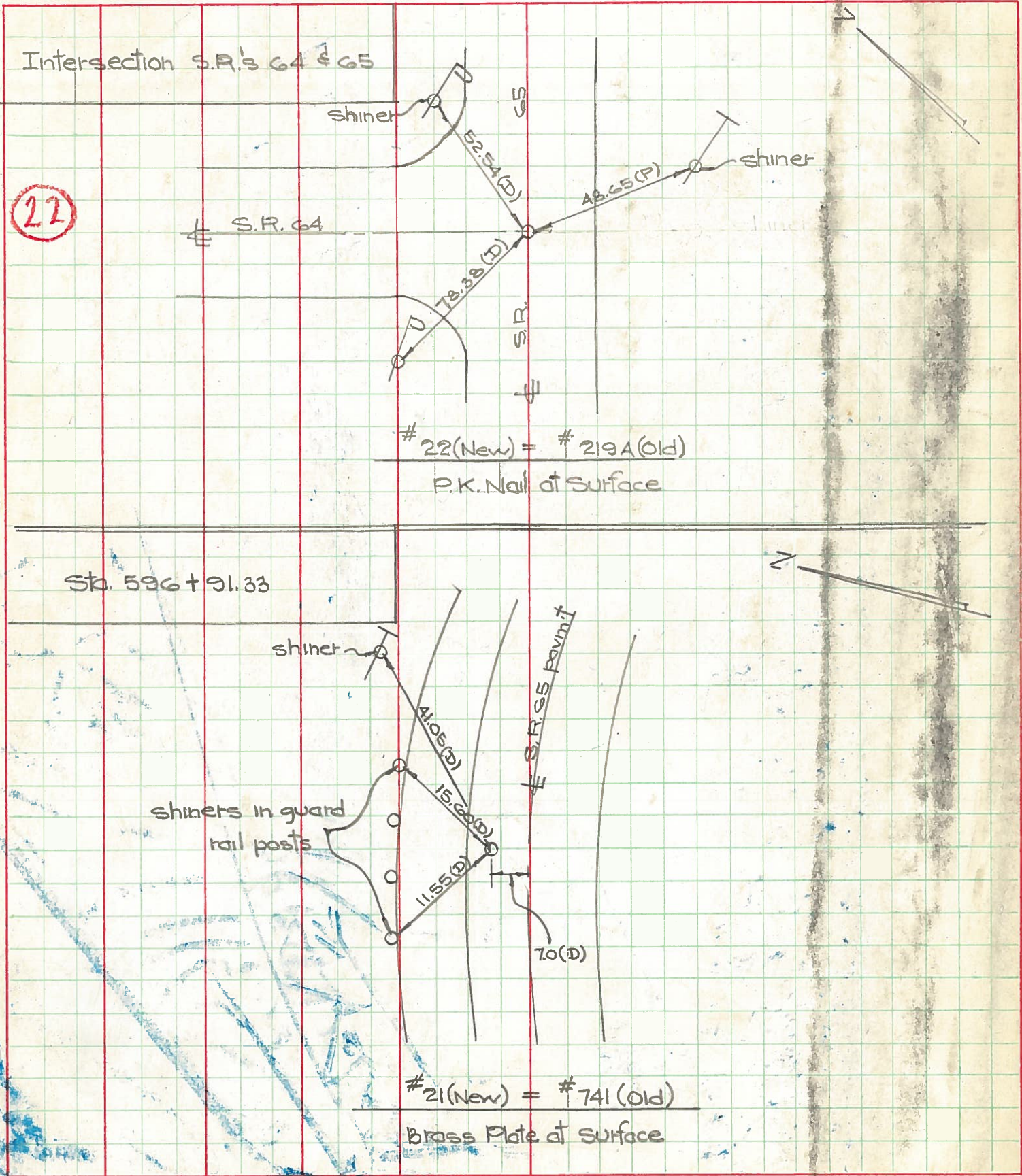
COUNTY Wood DATE June 20, 1968

W. Denno
D. Curtis
J. Teal
J. Brindley

S. R. 65 WEATHER warm
SEC. S.R. 582 to S.R. 64 TEMP. 75° ±

DESCRIPTION S.R. 65-Ref. Mon. & Control Points - S.R. 64 JOB NO. 02994(0)

LEFT CENTER LINE RIGHT



22

St. 596 + 91.33

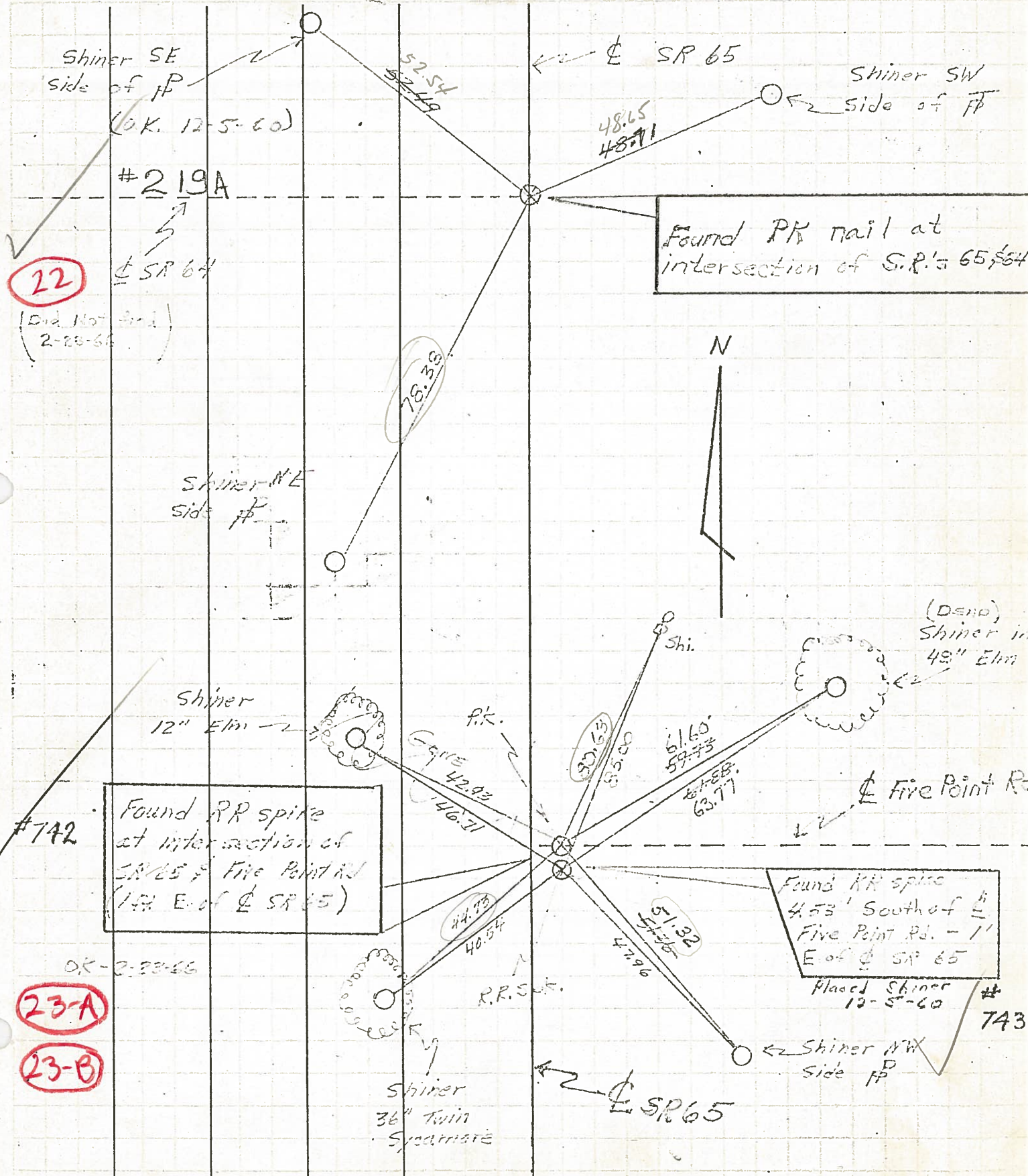
#22(New) = #219A(Old)
P.K. Nail at Surface

#21(New) = #741(Old)
Brass Plate at Surface

| PERSONNEL | TITLE | PERSONNEL | TITLE |
|------------|------------|-----------|-------|
| Delucathal | Hoover | | |
| Young | Roffet | | |
| | Delucathal | | |
| | Young | | |
| | Hoff | | |

COUNTY Wood DATE 8-17-60
2-23-66
 S. R. 65 WEATHER Clear
 SEC. 11.76 - 17.65 TEMP. 80

DESCRIPTION CONTROL POINTS JOB NO. _____
 LEFT CENTER LINE RIGHT



Found PK nail at intersection of S.R.'s 65, 64

Found RR spike at intersection of SR 65 & Five Point Rd (1/4" E. of center of SR 65)

Found RR spike 4.53' South of center of Five Point Rd. - 1' E. of center of SR 65
 Placed Shiner 12-5-60

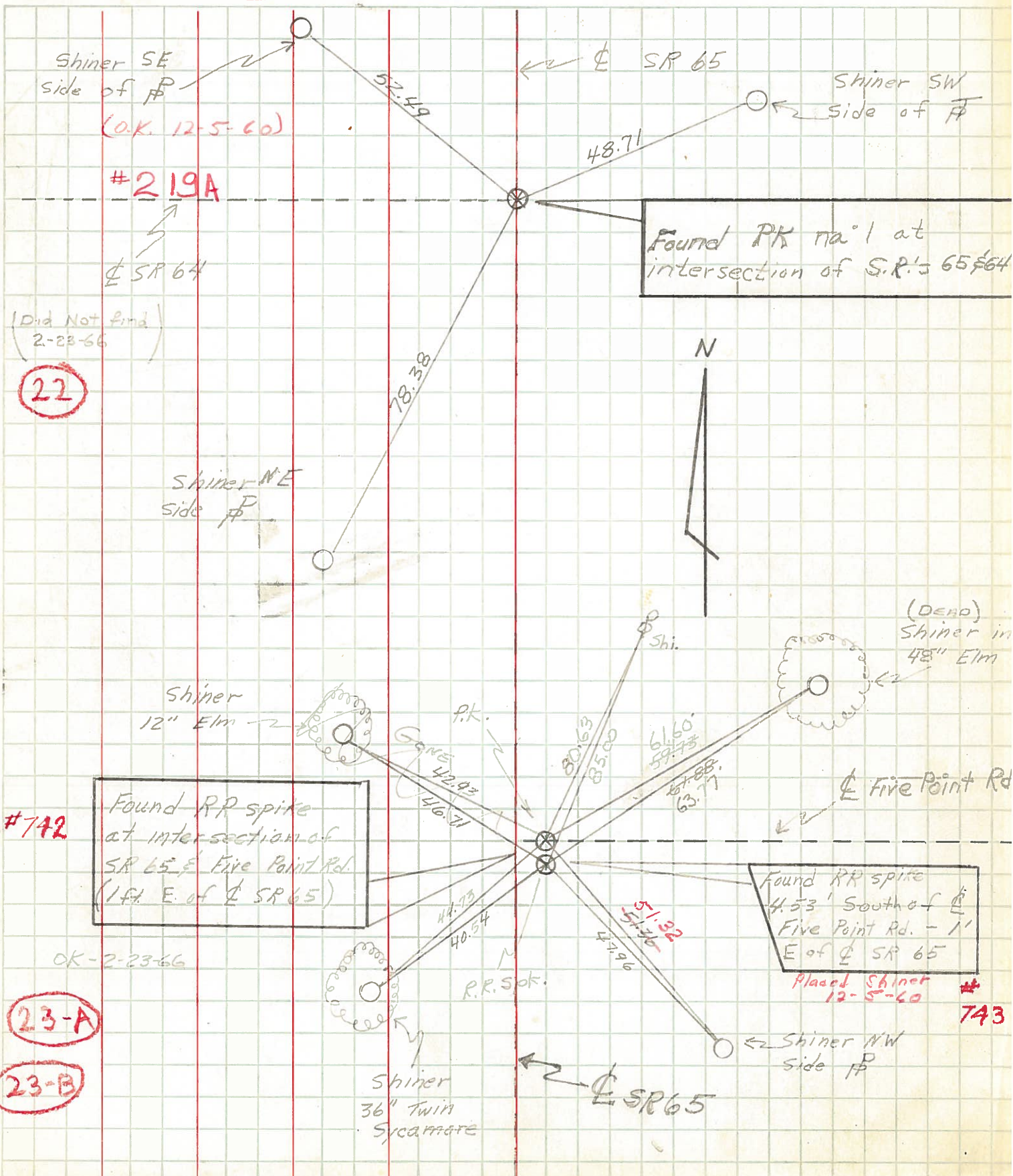
#742
 OK-2-23-66
 23-A
 23-B

#743

| PERSONNEL | TITLE | PERSONNEL | TITLE |
|------------|------------|-----------|-------|
| Delventhal | Hoover | | |
| Young | Ruffet | | |
| | Delventhal | | |
| | Young | | |
| | Hoff | | |

COUNTY Wood DATE 8-17-60
 S. R. 65 WEATHER Clear
 SEC. 11.96 - 17.65 TEMP. 80

DESCRIPTION CONTROL POINTS LEFT CENTER LINE RIGHT JOB NO.



#219A

(Did Not find)
2-23-66

22

#742

Found RR spike at intersection of SR 65 & Five Point Rd. (1 ft E. of center line SR 65)

OK-2-23-66

23-A

23-B

Found RR spike 4.53' South of center line Five Point Rd. - 1' E of center line SR 65

Placed Shiner 12-5-60

#743