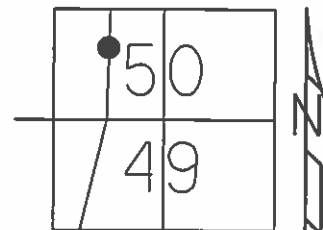


O.D.O.T. DISTRICT 2 SURVEY OFFICE (USE ONLY)

PERSONNEL \_\_\_\_\_ REFERENCE NO. 22 B SHEET 4 OF 44  
 NOTES LEU DATE 06-12-14 ROUTE SR 65  
 H.C. HOMAN WEATHER CLOUDY COUNTY WOOD  
 R.C. RHOADES TEMP. 69°F TOWNSHIP MIDDLETON  
 \_\_\_\_\_ WESTFALL \_\_\_\_\_ SECTION RT 50  
 \_\_\_\_\_ T 6 N R 10 E

TYPE MONUMENT P.K.NAIL  
~~ON SURFACE~~ - BELOW 2"  
 LEFT - ℄ PAV'T - ~~RIGHT~~ 0.3'  
9.7 TO LT EDGE PAVEMENT  
 S.L.M. 653+56.01



Grid: Northing: 672178.163 Easting: 1637354.599

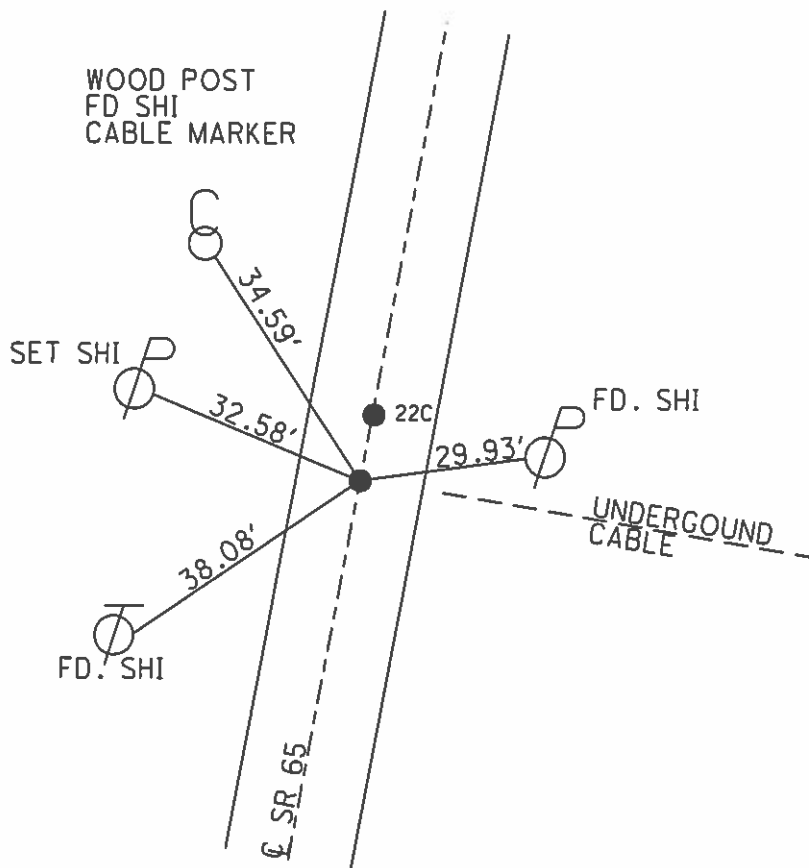
FD PK @SURFACE, 1984

NOTE: DIST. 22B-22C=12.99'

SET PK/WASHER  
8-7-95, SAH

FD P.K.NAIL  
06-12-14, DCH

SET MAG/WASHER  
7-28-15, DCH



# O.D.O.T. DISTRICT 2 SURVEY OFFICE

PERSONNEL \_\_\_\_\_

REFERENCE NO. \_\_\_\_\_

SHEET 43 OF 91

NOTES VANDUSEN

H.C. MOSER

R.C. HUSS

DATE 5-24-95

WEATHER CLOUDY/RAINY

TEMP. +60°F

ROUTE SR-65

COUNTY Wood

TOWNSHIP Middleton

SECTION River Tract 50

T 6 N R 10 E

TYPE MONUMENT P.K./WASHER

ON SURFACE - BELOW Yes

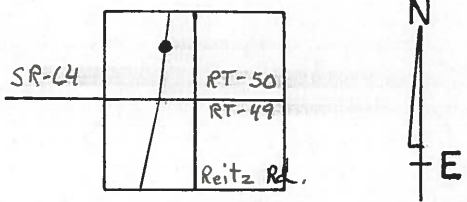
LEFT-~~PAV'T.~~ - RIGHT 0.7' LT

7.6' TO LT. EDGE PAVEMENT

S.L.M. 651+55

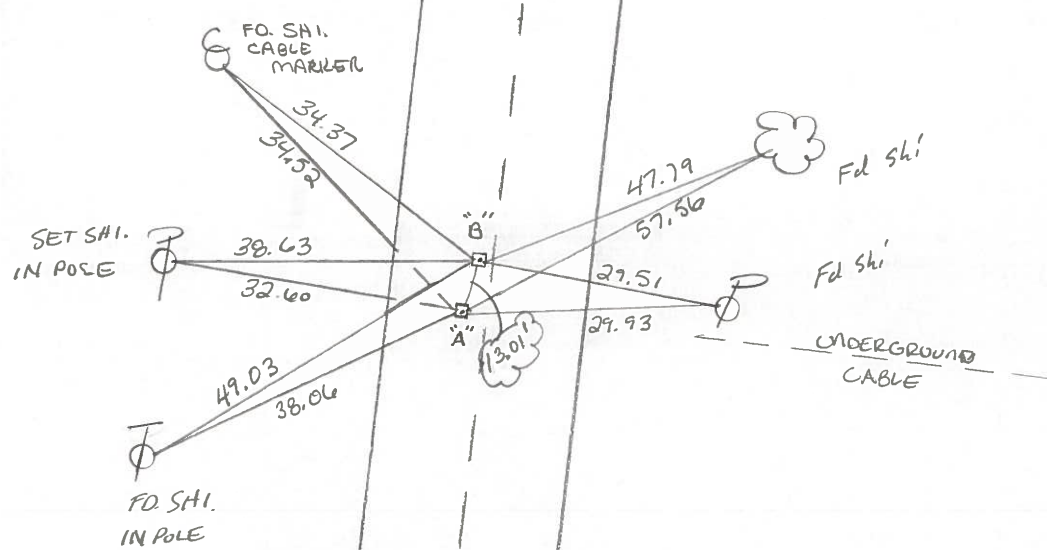
22-B

22-C



"A" Fd PK @ surface  
 "B" Fd Bent Harrow Tooth  
 "1984"

Set P.K./washer  
 8-7-95 SAM



County Wood S.R. 65

Date 4-13-84

Township MIDDLETON

Weather CLEAR

Section RIVER TRACT 50

Temp. 50°

T6N, R10E

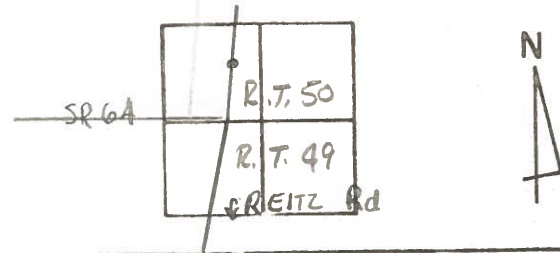
Personnel HOFFMAN

LOEHRKE

HOUSEHOLDER H.C.

BARNHISEL R.C.

**22-B**  
**22-C**



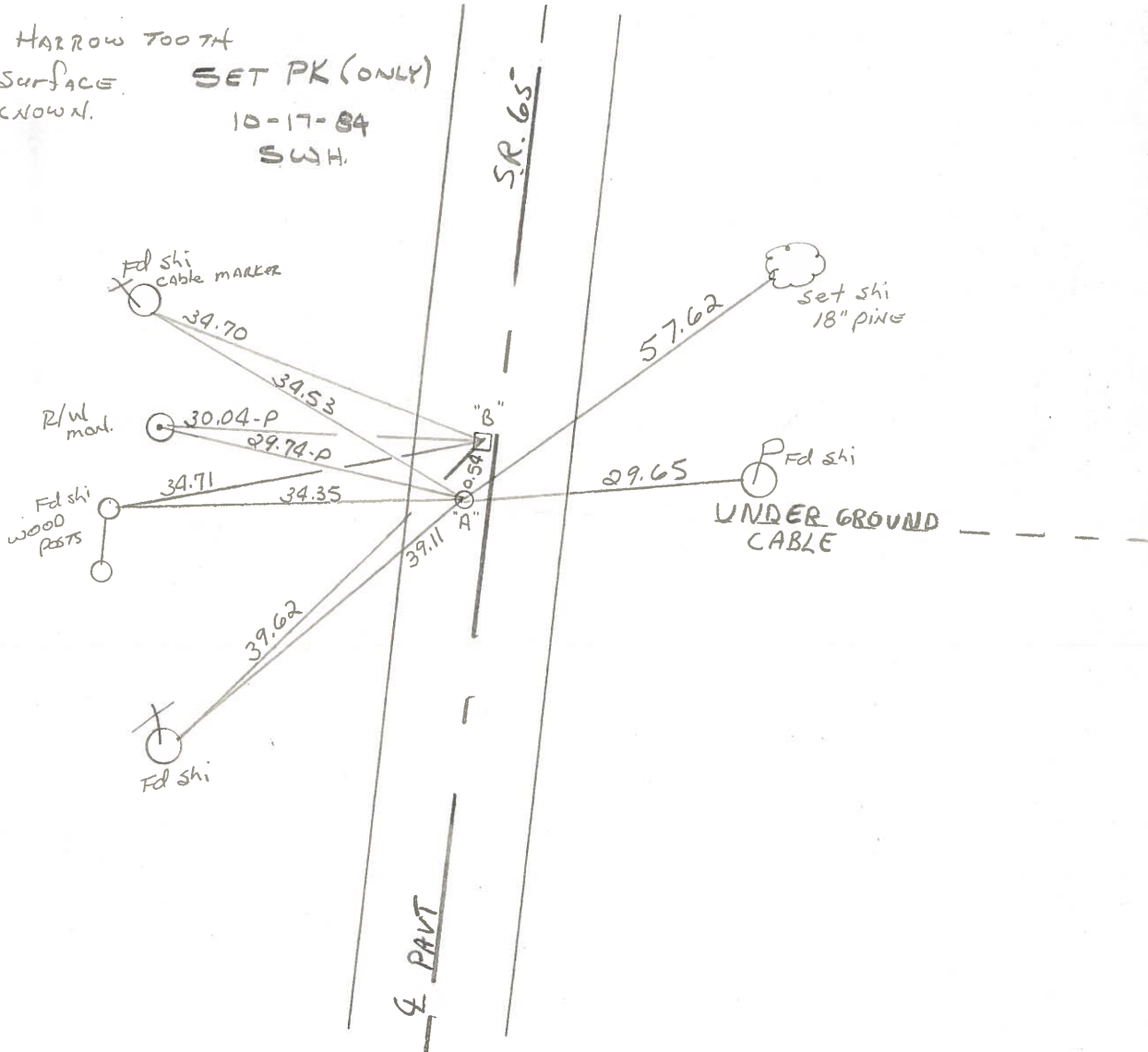
"A" Fd P.K. @ surface  
0.7' Lt. of & part  
8.9' TO Lt. EP  
10.0' TO RT EP

SET PK/WASHER  
10-17-84  
SWH.

S&M 651+55

"B" Fd Bent Harrow Tooth  
3" Below surface  
ORIGIN UNKNOWN.

SET PK (ONLY)  
10-17-84  
SWH.



PERSONNEL	TITLE	PERSONNEL	TITLE
BURNSIDE			
SMITH			
BOWERS			

COUNTY Wood DATE 4-18-72  
 S. R. 65 WEATHER CLEAR  
 SEC. MIDDLETON TWP TEMP. +75°

DESCRIPTION \_\_\_\_\_ LEFT \_\_\_\_\_ CENTER LINE \_\_\_\_\_ RIGHT \_\_\_\_\_ JOB NO. \_\_\_\_\_

