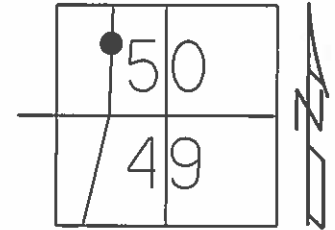


O.D.O.T. DISTRICT 2 SURVEY OFFICE (USE ONLY)

PERSONNEL _____ REFERENCE NO. 22 C SHEET 5 OF 44
 NOTES LEU DATE 06-12-14 ROUTE SR 65
 H.C. HOMAN WEATHER CLOUDY COUNTY WOOD
 R.C. RHOADES TEMP. 69°F TOWNSHIP MIDDLETON
 _____ WESTFALL _____ SECTION RT 50
 _____ T 6 N R 10 E

TYPE MONUMENT PK NAIL
 ON SURFACE - ~~BELOW~~ ON
~~LEFT~~ - CL PAV'T - RIGHT 0.4'
9.6' TO RT EDGE PAVEMENT
 S.L.M. 653+69



Grid: Northing: 672191.069 Easting: 1637356.057

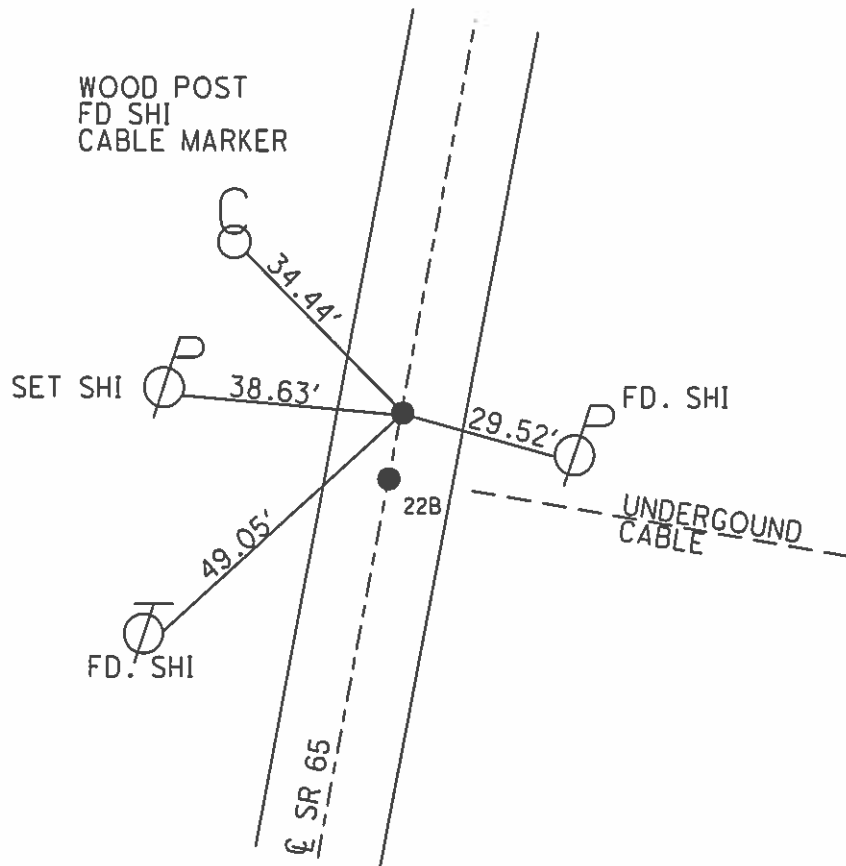
FD BENT HARROW TOOTH
1984

NOTE: DIST. 22B-22C=12.99'

SET PK/WASHER
8-7-95, SAH

FD P.K.NAIL
06-12-14, DCH

SET MAG/WASHER
7-28-15, DCH



O.D.O.T. DISTRICT 2 SURVEY OFFICE

PERSONNEL

REFERENCE NO. _____

SHEET 43 OF 91

NOTES VANDUSEN

H.C. MOSEY

R.C. HUSS

DATE 5-24-95

WEATHER CLOUDY/RAINY

TEMP. 46.0°F

ROUTE SR-65

COUNTY Wood

TOWNSHIP Middleton

SECTION River Tract 50

T 6 N 10 E

TYPE MONUMENT P.K./WASHER

ON SURFACE - BELOW Yes

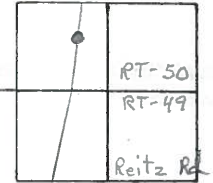
LEFT-~~PAV'T.~~ - RIGHT 0.7' LT

7.6' TO LT. EDGE PAVEMENT

S.L.M. 651+55

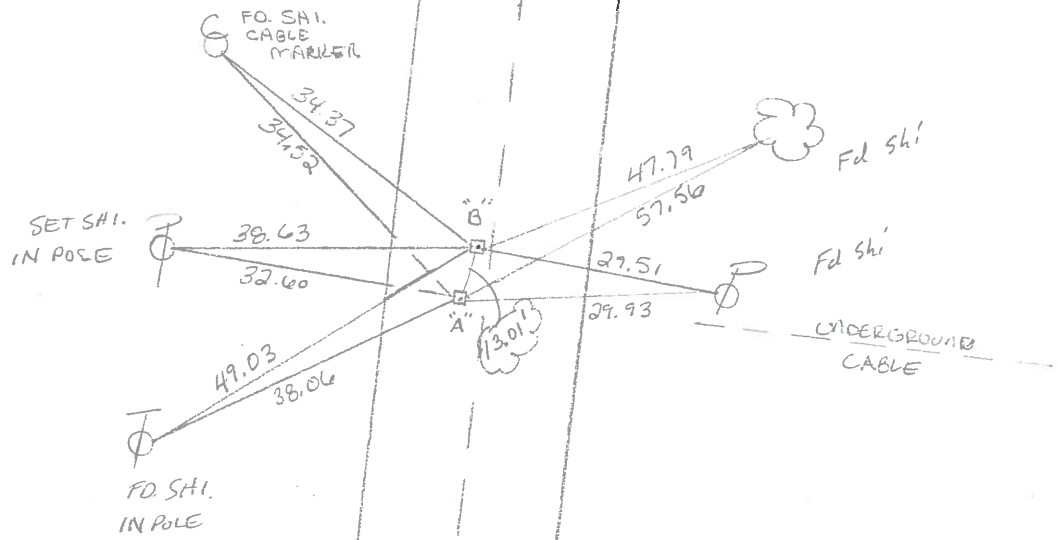
22-B

22-C



"A" Fd PK @ surface
 "B" Fd Bent Harrow Tooth
 "1984"

Set P.K./washer
 8-7-95 SML



County WOOD S.R. 65

Date 4-13-84

Township MIDDLETON

Weather CLEAR

Section RIVER TRACT 50

Temp. 50°

T6N, R10E

Personnel HOFFMAN

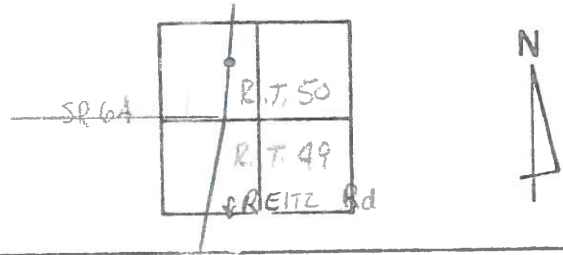
LOEHRKE

HOUSEHOLDER H.C.

BARUNISSEL R.C.

22-B

22-C



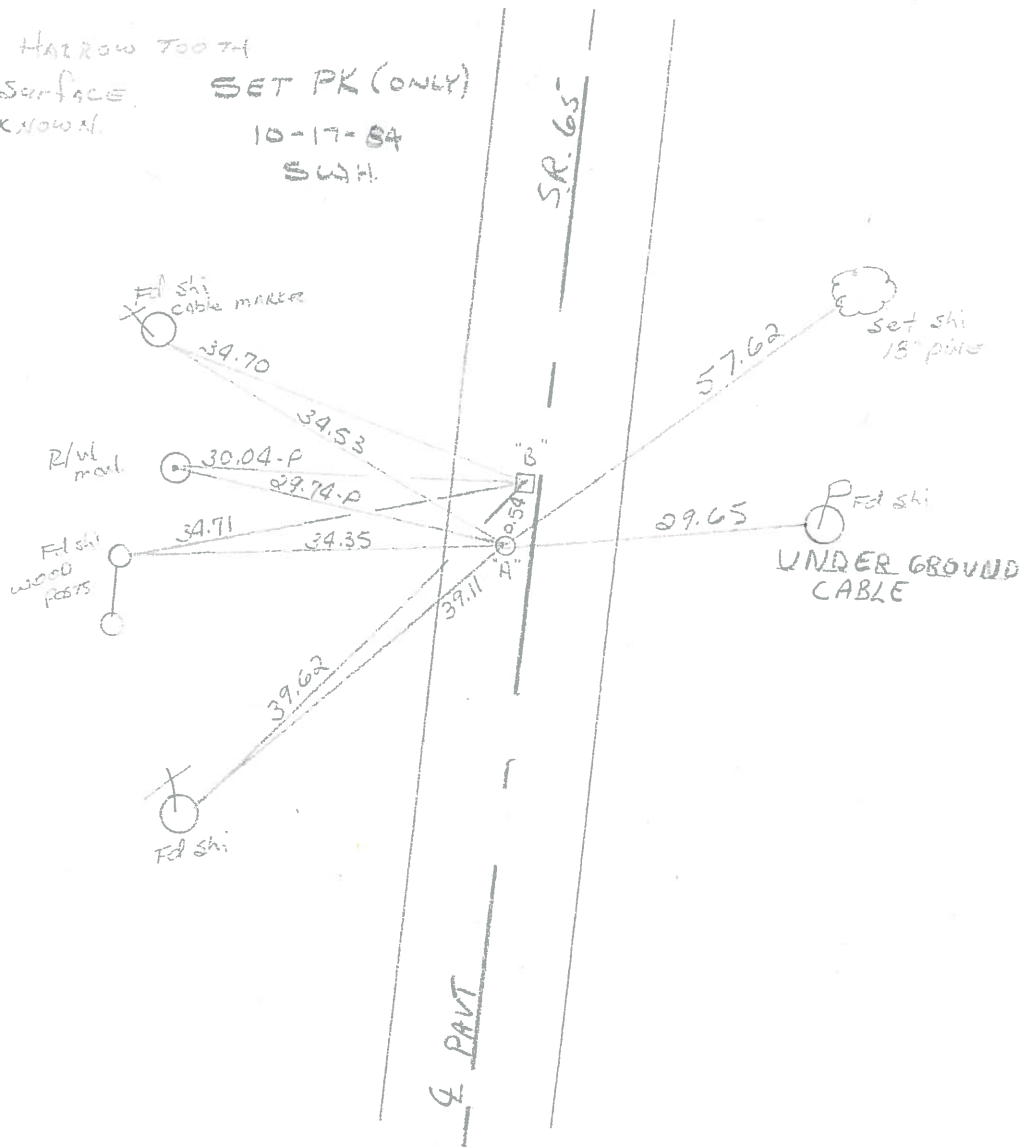
"A" Fd P.C. @ surface
 0.7' Lt. of & part
 8.9' to Lt. #P
 10.0' to R.T.P.

SET PK/WASHER
 10-17-84
 SWH

SLM 651+55

"B" Fd Bent Harrow Tooth
 3" below surface
 ORIGIN UNKNOWN.

SET PK (ONLY)
 10-17-84
 SWH.



PERSONNEL	TITLE	PERSONNEL	TITLE	COUNTY	DATE	WEATHER	TEMP.
Tomsic		Jackson		Wood	Aug. 3, 1971	Fair	70's
Neuser				S. R. #65			
Vanyo				SEC.			
Granata							

DESCRIPTION Reference Monumenting on S.R. #65 JOB NO. _____

