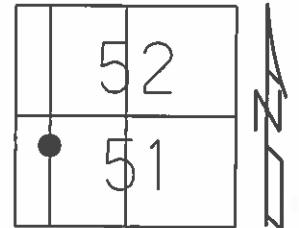


O.D.O.T. DISTRICT 2 SURVEY OFFICE (USE ONLY)

PERSONNEL \_\_\_\_\_ REFERENCE NO. 22 E SHEET 7 OF 44  
 NOTES LEU DATE 6-12-14 ROUTE SR 65  
 H.C. HOMAN WEATHER CLOUDY COUNTY WOOD  
 R.C. WESTFALL TEMP. 70°F TOWNSHIP MIDDLETON  
 SECTION RT 51  
 T 6 N R 10 E

TYPE MONUMENT P.K.NAIL  
 ON SURFACE - ~~BELOW~~ ON \_\_\_\_\_  
 LEFT - ☉ PAV'T - ~~RIGHT~~ 1.0'  
9.9' TO LT EDGE PAVEMENT  
 S.L.M. 656+18.93



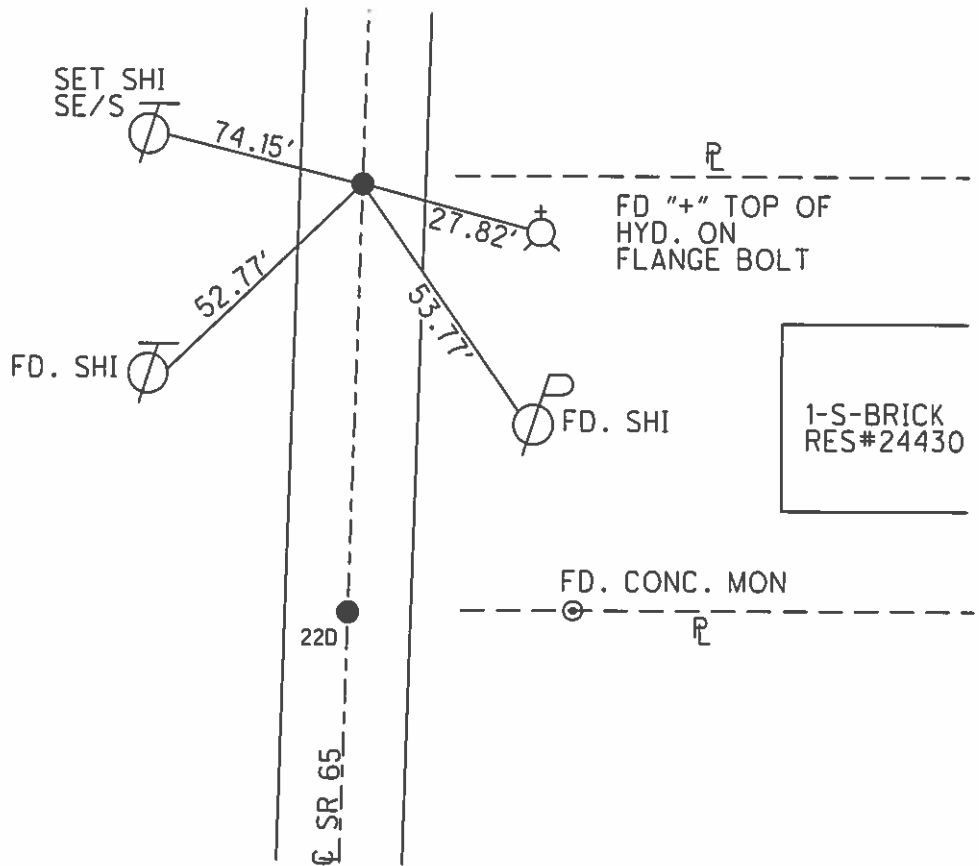
Grid: Northing: 672440.589 Easting: 1637370.357

FD PK @ SURFACE  
 5/24/95

NOTE: DIST.22D-22E= 116.07'

SET PK/WASHER  
 8-7-95, SAH

FD P.K./WASHER  
 6-12-14  
 SET MAG/WASHER  
 7-28-15, DCH



# O.D.O.T. DISTRICT 2 SURVEY OFFICE

PERSONNEL \_\_\_\_\_

REFERENCE NO. \_\_\_\_\_

SHEET 44 OF 91

NOTES VAN DUSEN

H.C. MOSEK

DATE 5-24-95

ROUTE SR 65

R.C. HUSS

WEATHER CLOUDY

COUNTY Wood

TEMP. +60°F

TOWNSHIP Middletown

SECTION \_\_\_\_\_

T 6 N R 10 E

TYPE MONUMENT P.K. WASHER

22-D

ON SURFACE - BELOW YES

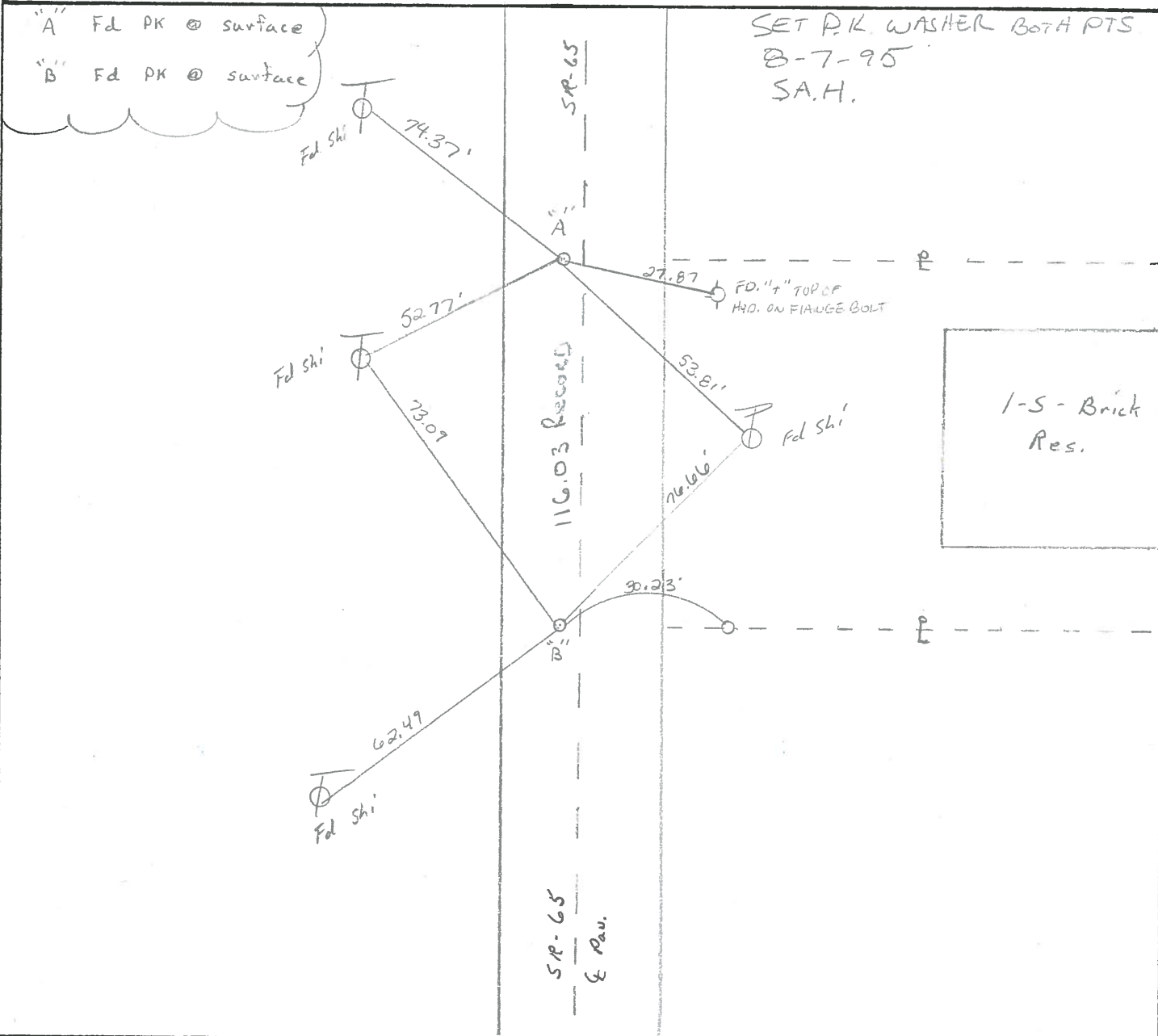
22-E

LEFT-~~C~~ PAV'T. - RIGHT ("A" = 10'4") ("B" = 10'4")

<sup>A=9.9</sup>  
<sup>B=10.0</sup> TO LT EDGE PAVEMENT

S.L.M. 654+19

5225	RT 52
●	RT 51



County Wood S.R. 65

Date 4-13-84

Township MIDDLETON

Weather Clear

Section R.T. - 51

Temp. 50°

T6N, R0E

Personnel HOFFMAN

LOERKE

HOUSEHOLDER H.C.

BARNAISEL P.C.

22-D  
22-E

R.T.	52
R.T.	51



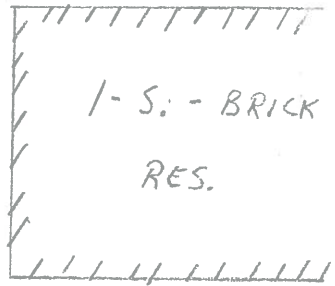
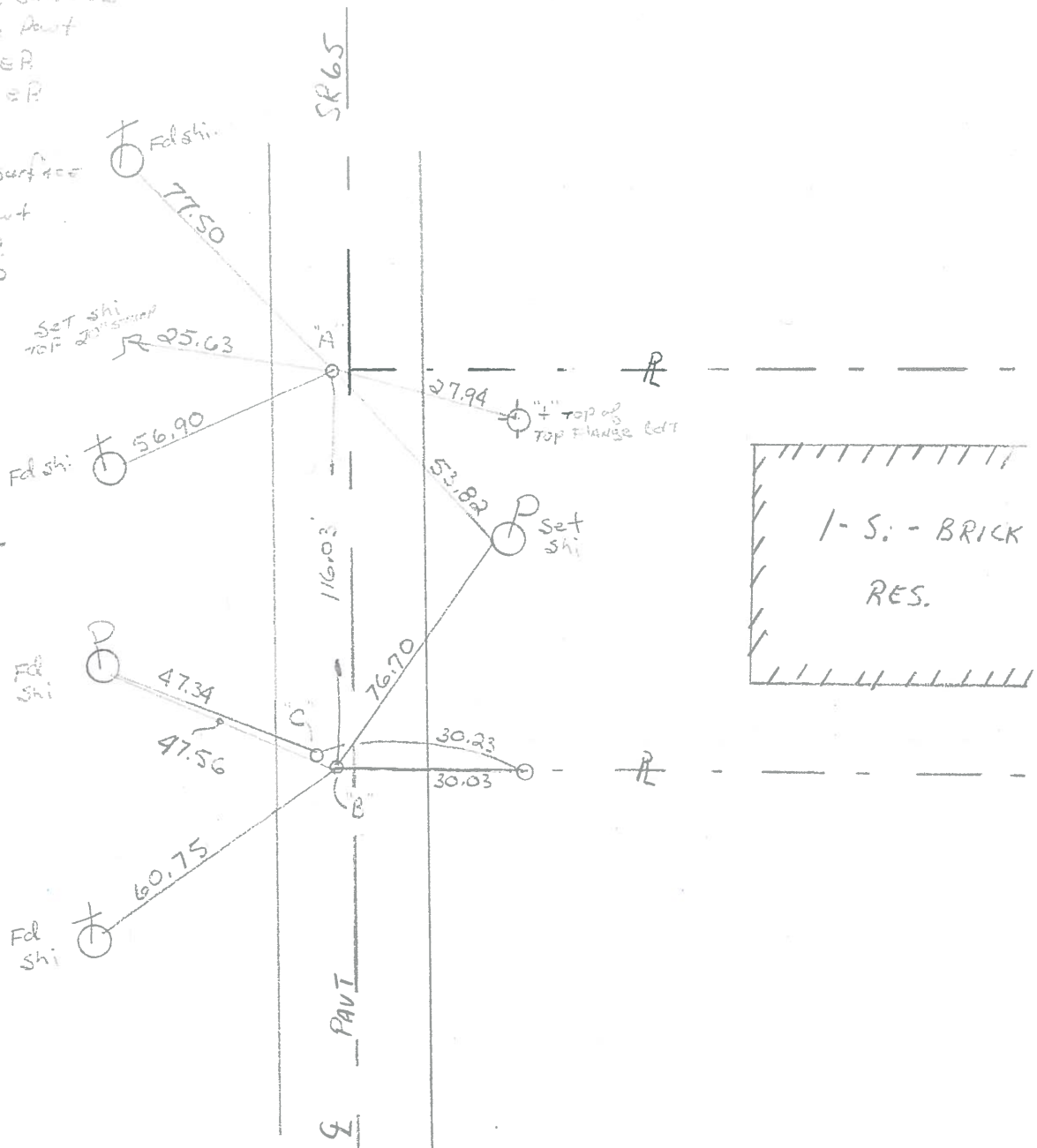
S.L.M. 654+19

"A" = Fd P.K. @ surface  
 SET PK 10' Lt. of Pavt  
 10-17-84 9.1' to Lt. EP  
 SWH 10.2' to Rt. EP

"B" = Fd P.K. @ surface  
 SET PK 10' Lt. of Pavt  
 10-17-84 9.1' to Lt. EP  
 SWH 10.1' to Rt. EP

"C" Fd P.K. @ surface,  
 0.25' FROM "B",  
 ORIGINAL UNKNOWN

DID NOT RESET THIS POINT



ODOT DISTRICT 2 SURVEY OFFICE

SHEET 3 OF

County WOOD S.R. 65

Date 7-10-80

Township MIDDLETON

Weather FAIR

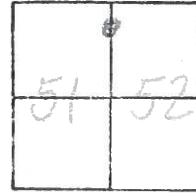
Section R.T. - 51-52

Temp. 85°

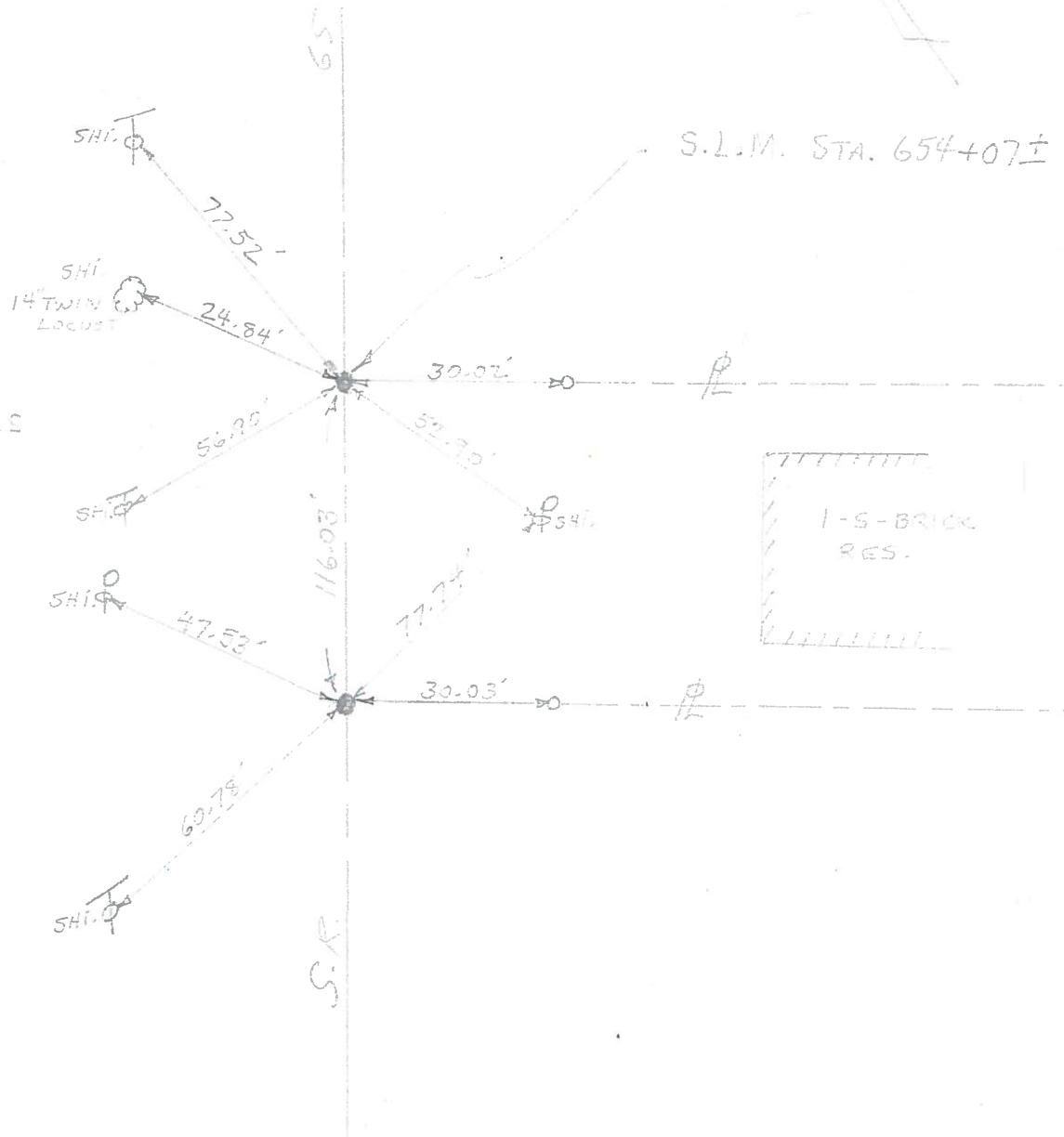
T\_N, R\_E

Personnel SMITH

**22-D**  
**22-E**



RESET P.K. NAILS



PERSONNEL	TITLE	PERSONNEL	TITLE	COUNTY	DATE
BURNSIDE				Wood	4-27-71
SMITH				S. R. #65	WEATHER Cloudy
BOWERS				MIDDLETON TWP	
SPADEJA	C.I.T.			SEC. 11.96 To 15.53	TEMP. +52°

DESCRIPTION POINTS FOUND BEFORE RESURFACING JOB NO. \_\_\_\_\_

