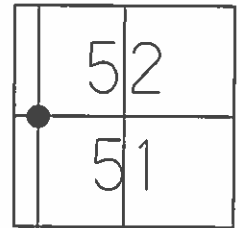


O.D.O.T. DISTRICT 2 SURVEY OFFICE (USE ONLY)

PERSONNEL _____ REFERENCE NO. 23 A SHEET 8 OF 44
 NOTES LEU DATE 6-12-14 ROUTE SR 65
 H.C. HOMAN WEATHER CLOUDY COUNTY WOOD
 R.C. WESTFALL TEMP. 70°F TOWNSHIP MIDDLETON
 SECTION RT 51&52
 T 6 N R 10 E

TYPE MONUMENT P.K.NAIL
~~ON SURFACE~~ - BELOW 3.5"
 LEFT - ☉ PAV'T - RIGHT ON
9.8' TO LT EDGE PAVEMENT
 S.L.M. 660+17.88



Grid: Northing: 672838.878 Easting: 1637393.369

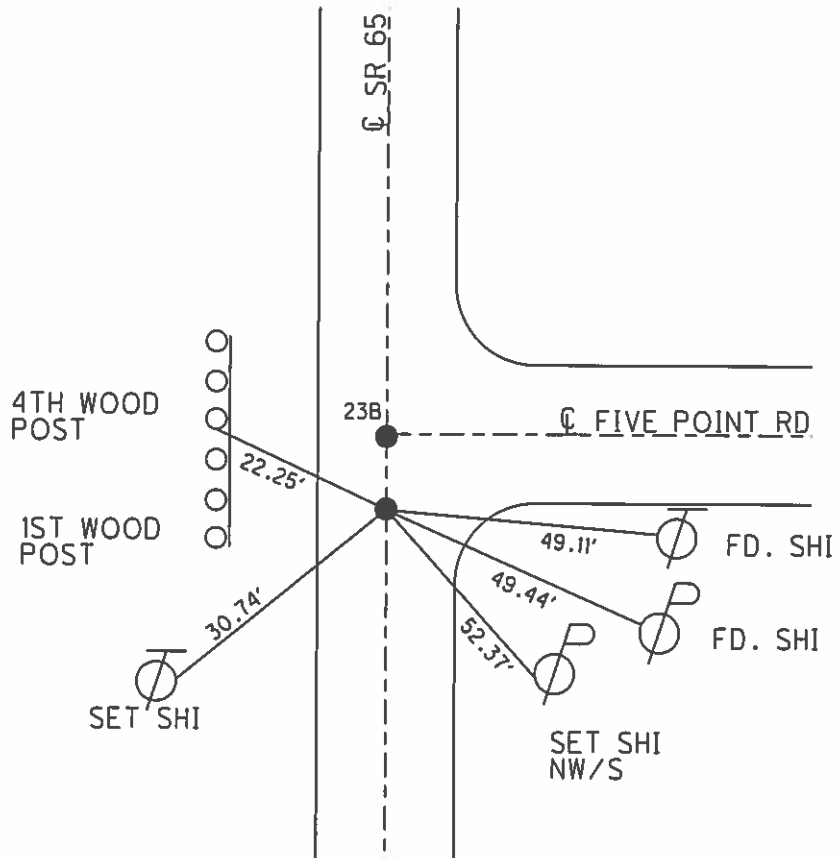
RECORD:
 FD. LARGE RR. SPK
 3" BELOW, 5/24/95

NOTE: DIST. 23A-23B= 4.55'

SET PK/WASHER
 8-7-95, SAH

FD P.K.SHANK
 9-17-12
 GPS, REFA23
 9-18-12, SAH

FD P.K.NAIL
 05-12-2014
 SET MAG/WASHER
 07-28-15, DCH



O.D.O.T. DISTRICT 2 SURVEY OFFICE

PERSONNEL _____

REFERENCE NO. _____

SHEET 45 OF 91

NOTES V. A. Dusen

H.C. MOSER

R.C. HUSS

DATE 5-24-95

WEATHER Cloudy

TEMP. 760 °F

ROUTE SR 65

COUNTY WOOD

TOWNSHIP MIDDLETON

SECTION R7-51#52

T6 N R 10 E

TYPE MONUMENT P.K. WASHER

ON SURFACE - BELOW Yes

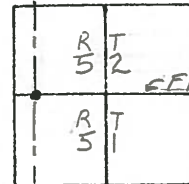
~~LEFT - & PAV'T. - RIGHT~~

TO LT EDGE PAVEMENT

S.L.M. 658+17

23-A

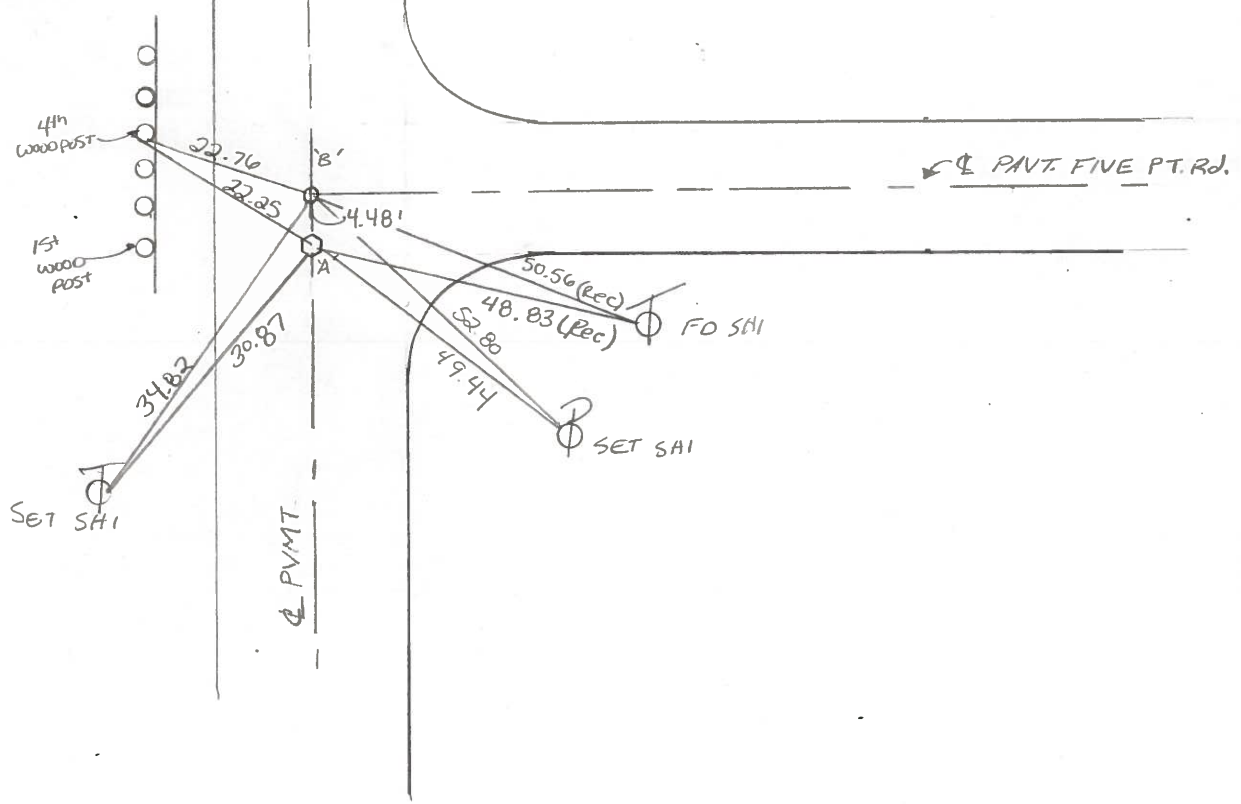
23-B



SET PK/WASHER
@ BOTH POINTS
18-7-95
SAH

REC.
A 1/2" LARGE RR SPK
3" BELOW SURFACE

REC.
B 1/2" SMALL RR SPK
@ SURFACE



County WOOD S.R. 65

Date 4-13-84

Township MIDDLETON

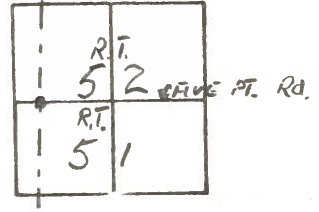
Weather Clear

Section RT - 51 & 52

Temp. 45

T6N, R10E

Personnel NOFFMAN



23-A

Loehrer

23-B

Householder H.C.

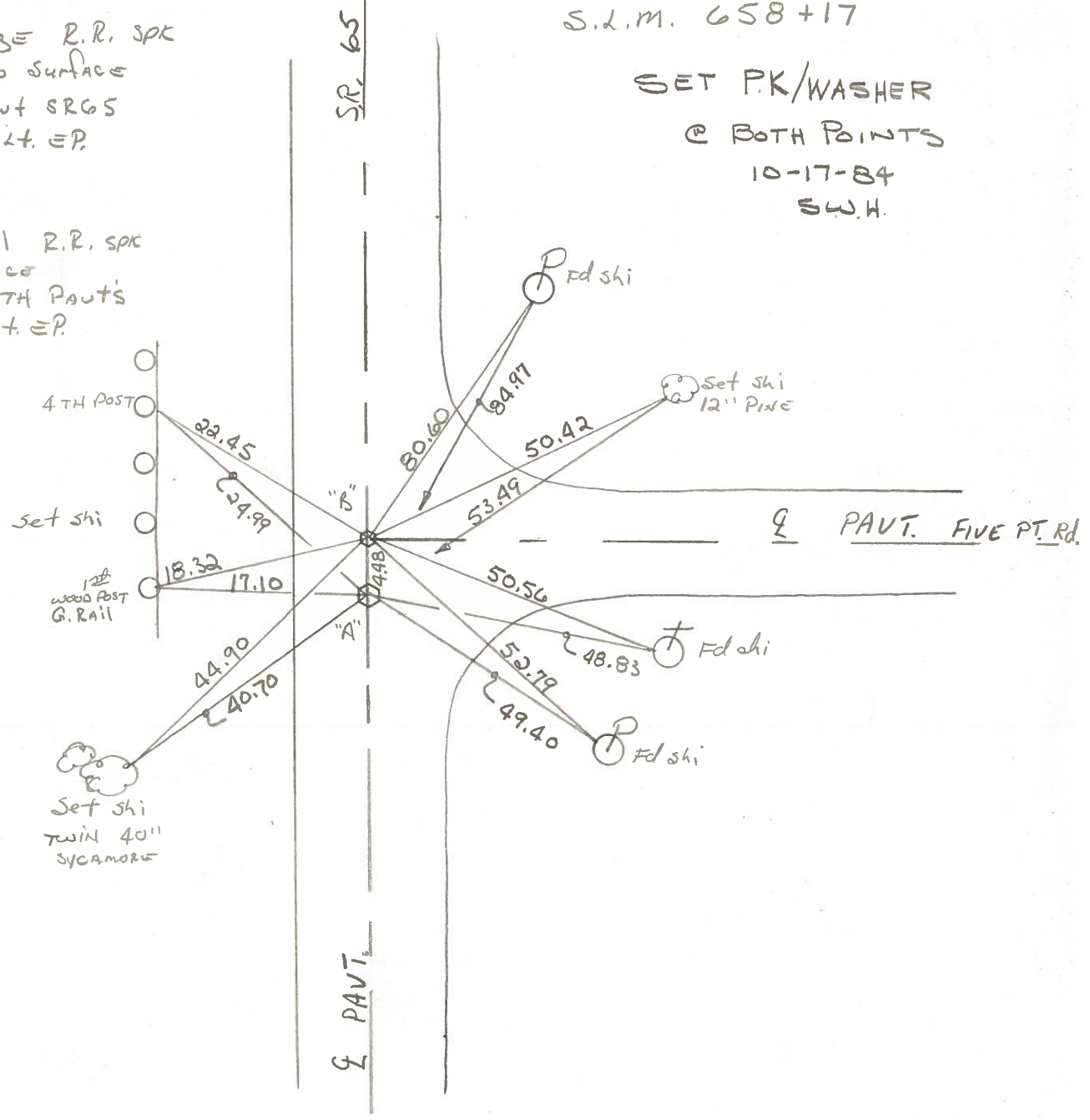
Barnhisel R.C.

"A" Fd large R.R. spike
 3" below surface
 on & part SR65
 9.8' to Lt. EP.

"B" Fd small R.R. spike
 @ surface
 on & both parts
 10.3' to Lt. EP.

S.L.M. 658+17

SET PK/WASHER
 @ BOTH POINTS
 10-17-84
 S.W.H.



County WOOD S.R. 65

Date 7-10-80

Township MIDDLETON

Weather FAIR

Section R.T. -

Temp. 85°

T_N, R_E

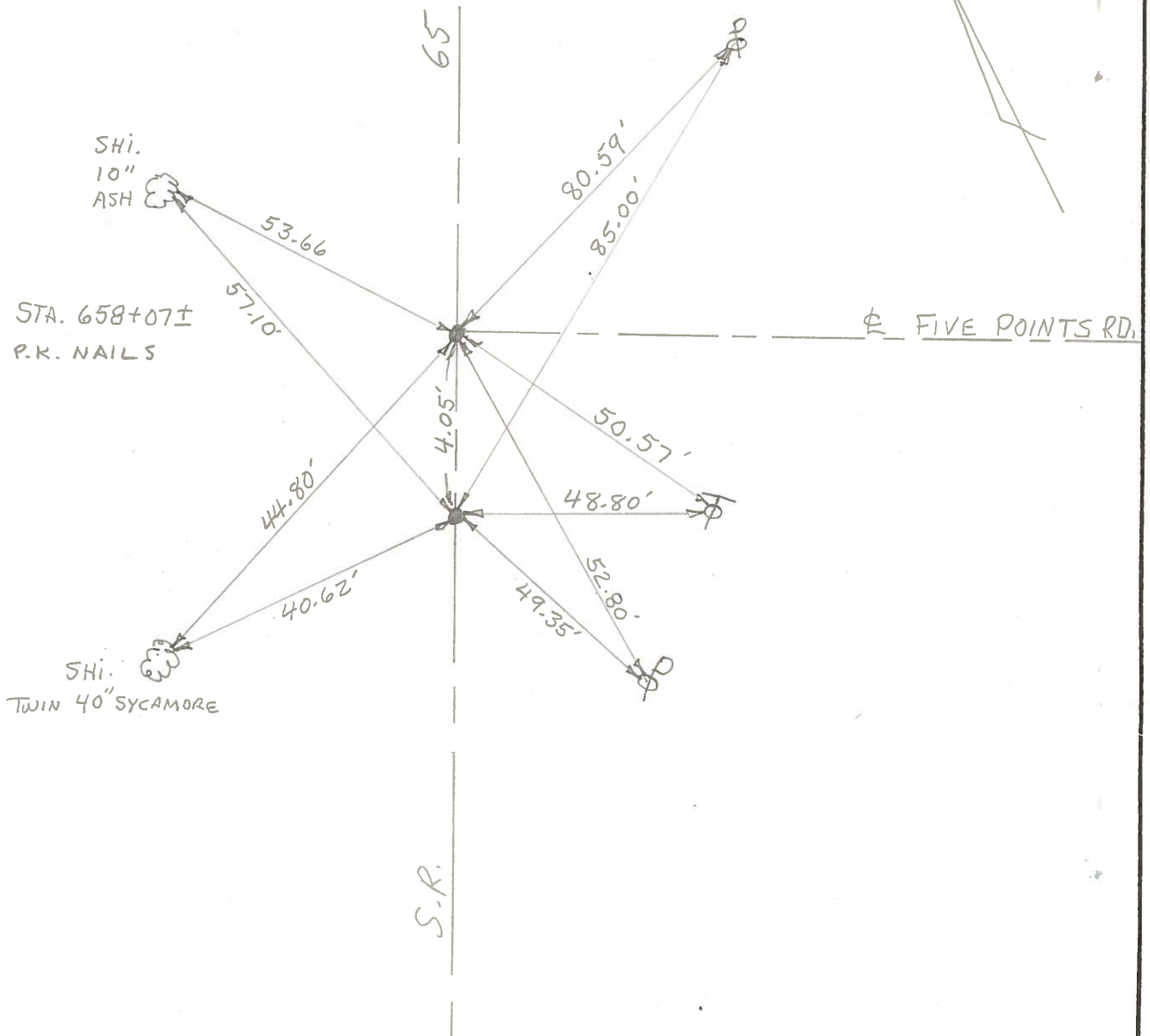
Personnel SMITH

23-A
23-B

51	52



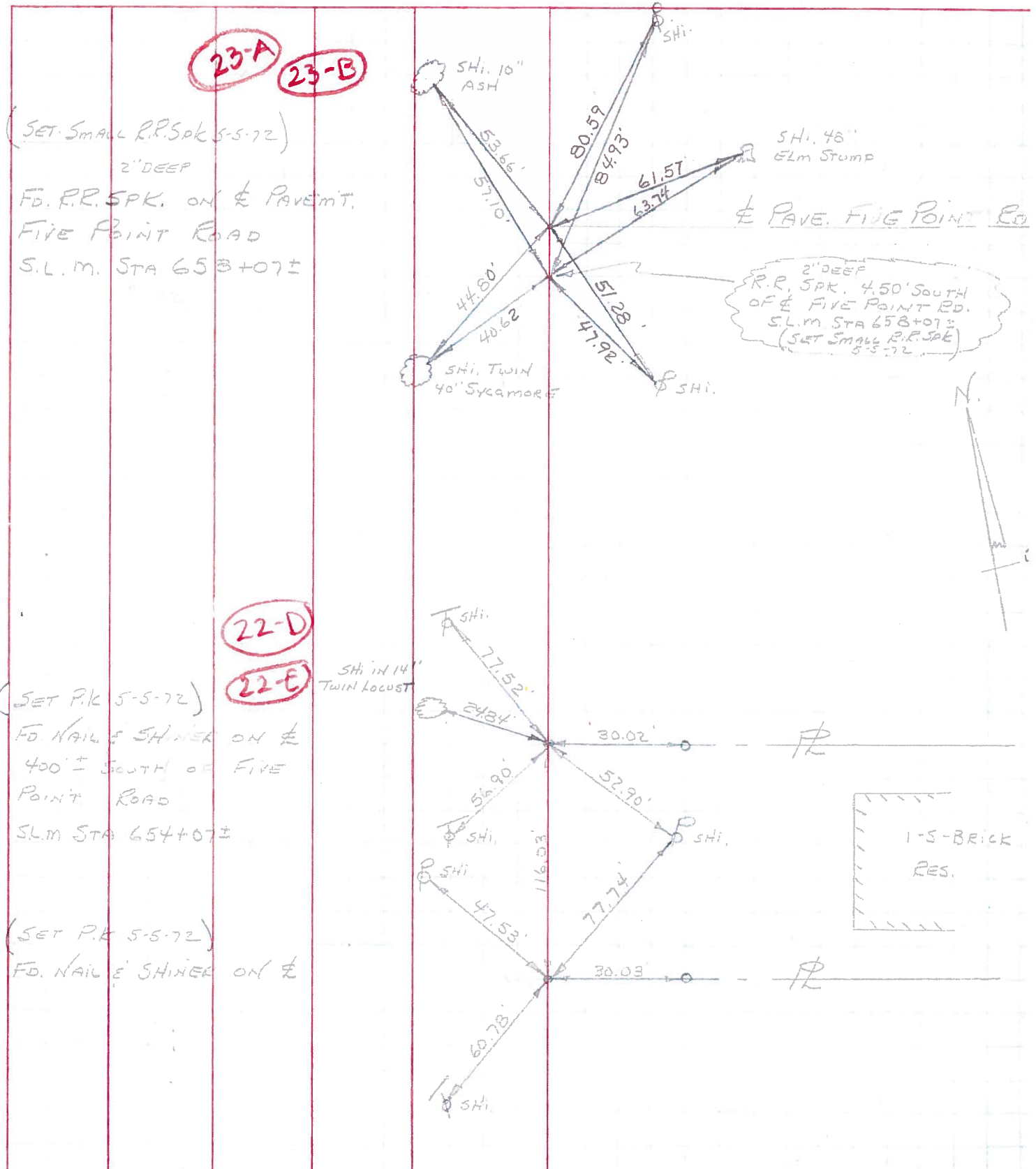
S.L.M. STA. 658+07±
SET P.K. NAILS



PERSONNEL TITLE PERSONNEL TITLE
 BUENSIDE _____
 SMITH _____
 BOWERS _____
 SPADEJA G.I.T.

COUNTY WOOD DATE 4-27-71
 S. R. #65 WEATHER CLOUDY
 MIDDLETON TWP
 SEC. 11.96 To 15.53 TEMP. +52°

DESCRIPTION POINTS FOUND BEFORE RESURFACING, LEFT CENTER LINE RIGHT JOB NO.



PERSONNEL	TITLE	PERSONNEL	TITLE
W. Denna			
D. Curtis			
J. Teal			
J. Brindley			

COUNTY Wood DATE June 24, 1968

S. R. 65 WEATHER warm

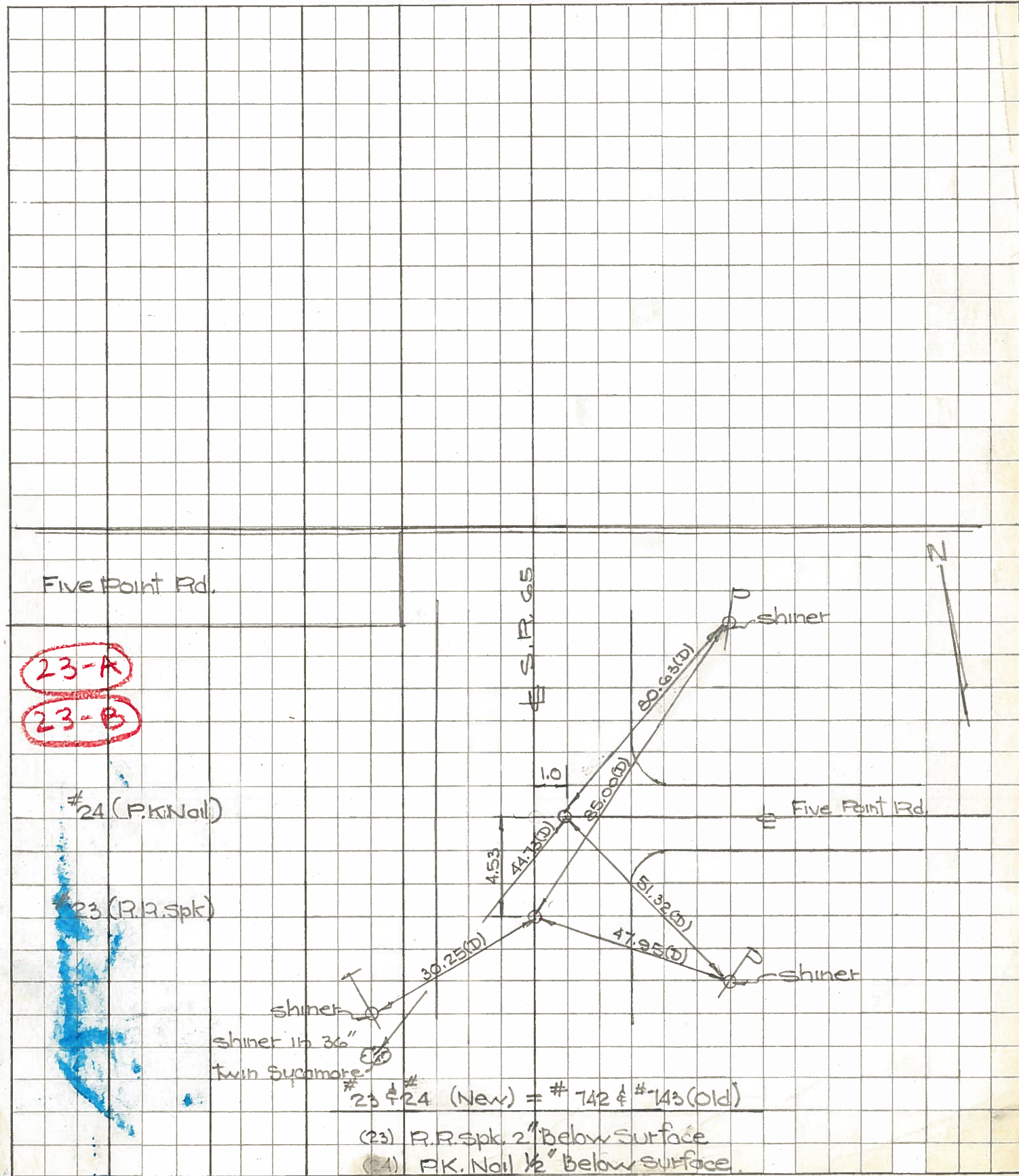
SEC. _____ TEMP. 85° F

DESCRIPTION S.R. 65 - Ref. Mon. & Control Points - JOB NO. 02994(0)

LEFT

CENTER LINE

RIGHT



#23 & #24 (New) = #742 & #143 (old)
 (23) R.R. Spk. 2" below surface
 (24) P.K. Nail 1/2" below surface.

PERSONNEL TITLE PERSONNEL TITLE COUNTY Wood DATE 8-17-60
Delventhal Hoover Rofter 2-23-66
Young Delventhal S. R. 65 WEATHER Clear
Young SEC. 11.76 - 17.65 TEMP. 80
Hoff

DESCRIPTION CONTROL POINTS LEFT CENTER LINE RIGHT JOB NO.

