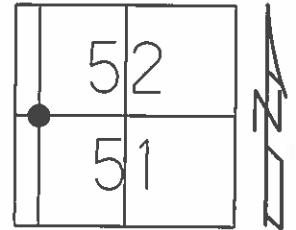


O.D.O.T. DISTRICT 2 SURVEY OFFICE (USE ONLY)

PERSONNEL \_\_\_\_\_ REFERENCE NO. 23 B SHEET 9 OF 44  
 NOTES LEU DATE 6-12-14 ROUTE SR 65  
 H.C. HOMAN WEATHER CLOUDY COUNTY WOOD  
 R.C. WESTFALL TEMP. 70°F TOWNSHIP MIDDLETON  
 SECTION RT 51&52  
 T 6 N R 10 E

TYPE MONUMENT SM RR. SPK  
~~ON SURFACE~~ - BELOW 5"  
 LEFT - ☉ PAV'T - RIGHT ON  
10.5' TO LT EDGE PAVEMENT  
 S.L.M. 660+22.43



Grid: Northing: 672843.2326 Easting: 1637394.2775

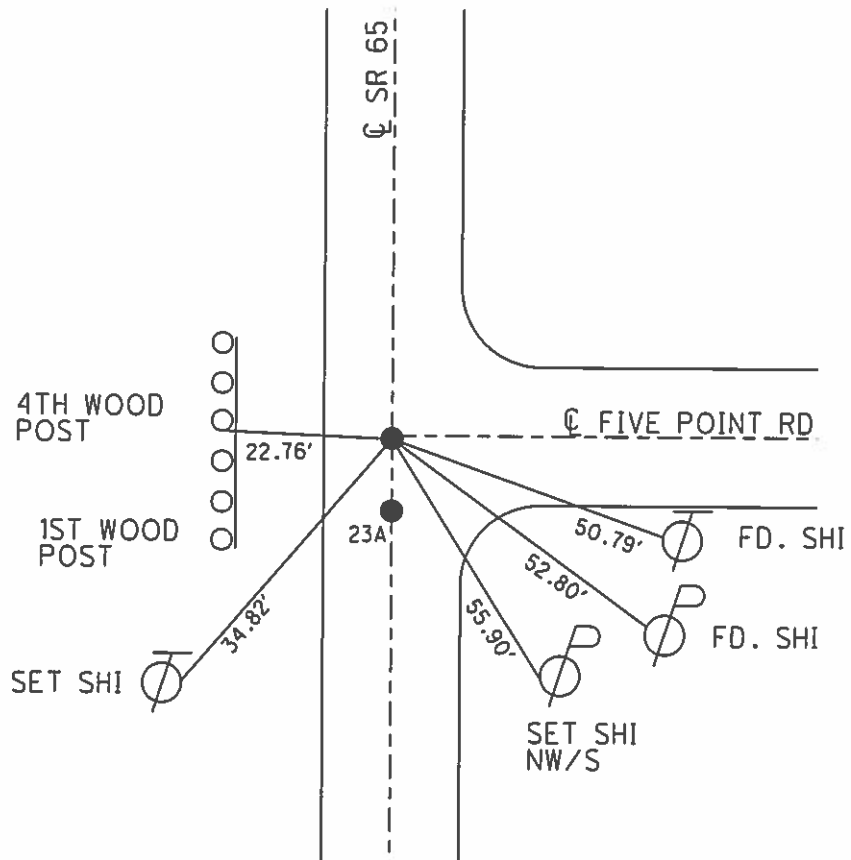
RECORD:  
 FD. LARGE RR. SPK  
 @ SURF., 5/24/95

NOTE: DIST. 23A-23B= 4.55'

SET PK/WASHER  
 8-7-95, SAH

FD P.K.SHANK  
 9-17-12  
 GPS, REFA23  
 9-18-12, SAH

FD SM.R.R.SPIKE  
 05-12-2014  
 SET MAG/WASHER  
 07-28-15, DCH



# O.D.O.T. DISTRICT 2 SURVEY OFFICE

PERSONNEL \_\_\_\_\_

REFERENCE NO. \_\_\_\_\_

SHEET 45 OF 91

NOTES V. A. Dusen

H.C. MOSER

R.C. HUSS

DATE 5-24-95

WEATHER Cloudy

TEMP. 760 °F

ROUTE SR 65

COUNTY WOOD

TOWNSHIP MIDDLETON

SECTION R7-51#52

T6 N R 10 E

TYPE MONUMENT P.K. WASHER

ON SURFACE - BELOW Yes

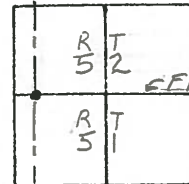
~~LEFT - & PAV'T. - RIGHT~~

TO LT EDGE PAVEMENT

S.L.M. 658+17

23-A

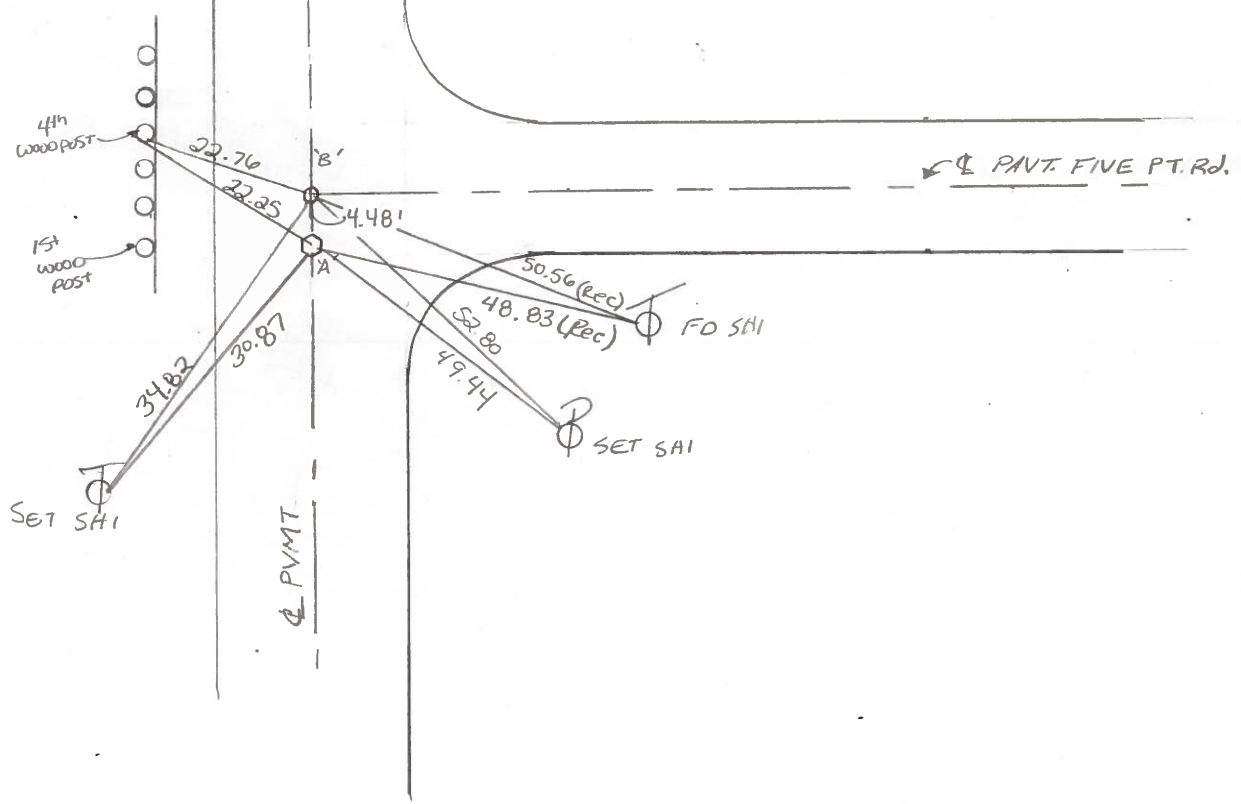
23-B



SET PK/WASHER  
@ BOTH POINTS  
18-7-95  
SAH

REC.  
A 1/2" LARGE RR SPK  
3" BELOW SURFACE

REC.  
B 1/2" SMALL RR SPK  
@ SURFACE



County WOOD S.R. 65

Date 4-13-84

Township MIDDLETON

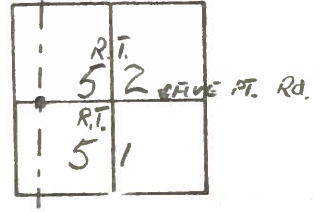
Weather Clear

Section RT - 51 & 52

Temp. 45

T6N, R10E

Personnel NOFFMAN



23-A

LOENRKE

23-B

HOUSEHOLDER H.C.

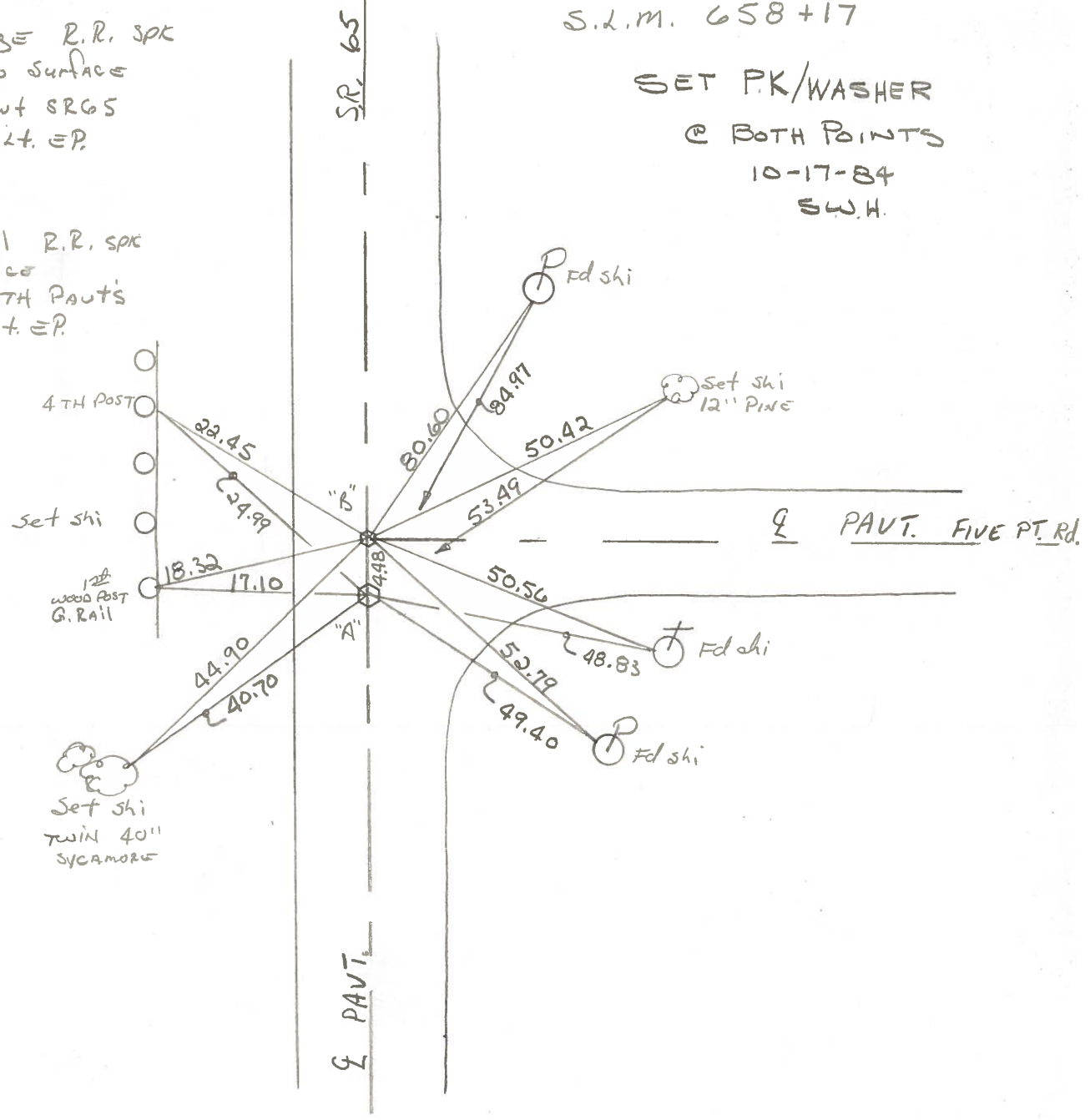
BARNHISEL R.C.

"A" Fd Large R.R. spike  
 3" Below surface  
 ON & PAUT SR65  
 9.8' TO Lt. EP.

"B" Fd small R.R. spike  
 @ surface  
 ON & BOTH PAUT'S  
 10.3' TO Lt. EP.

S.L.M. 658+17

SET P.K./WASHER  
 @ BOTH POINTS  
 10-17-84  
 S.W.H.



County WOOD S.R. 65

Date 7-10-80

Township MIDDLETON

Weather FAIR

Section R.T. -

Temp. 85°

T<sub>N</sub>, R<sub>E</sub>

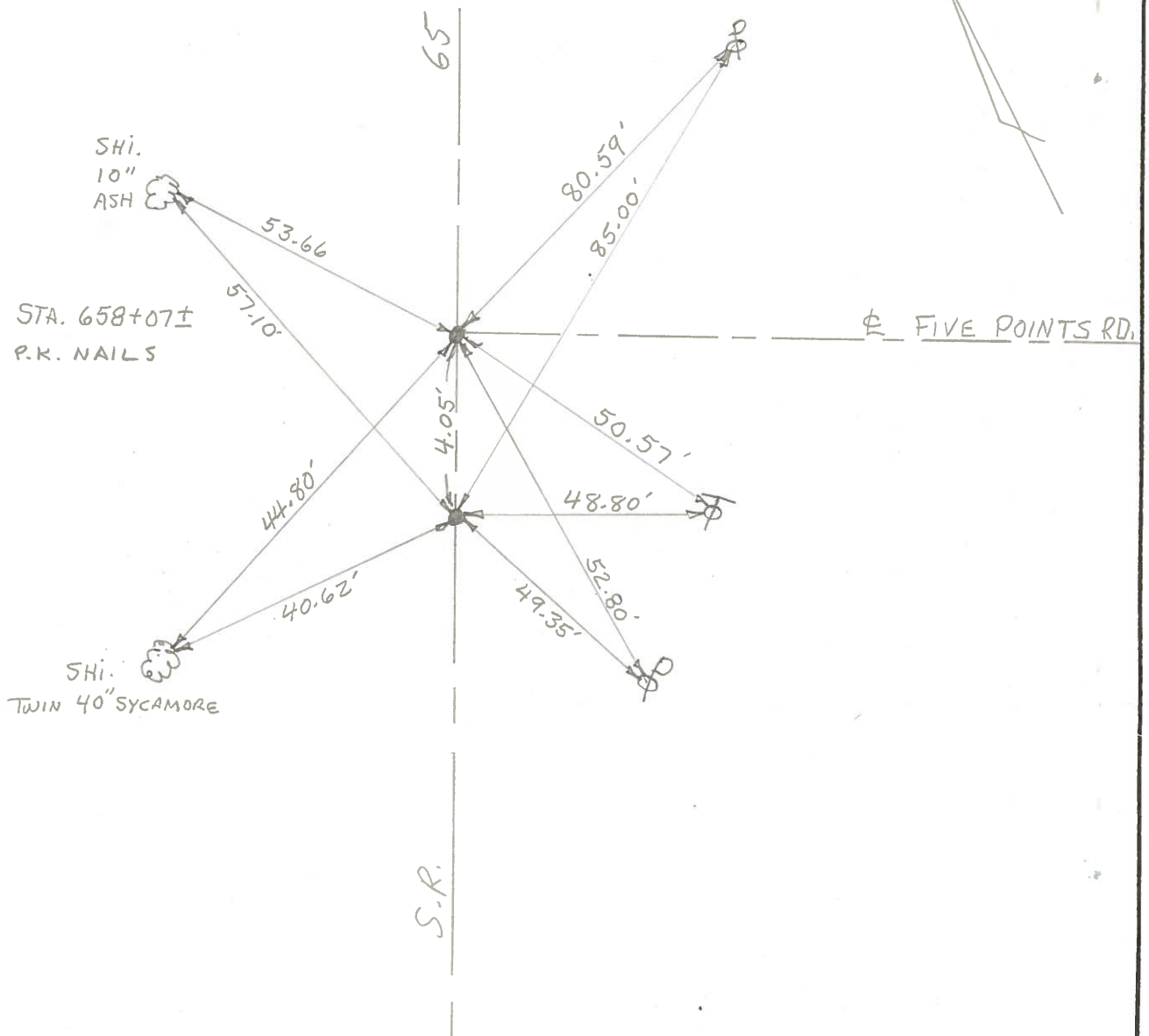
Personnel SMITH

23-A  
23-B

51	52



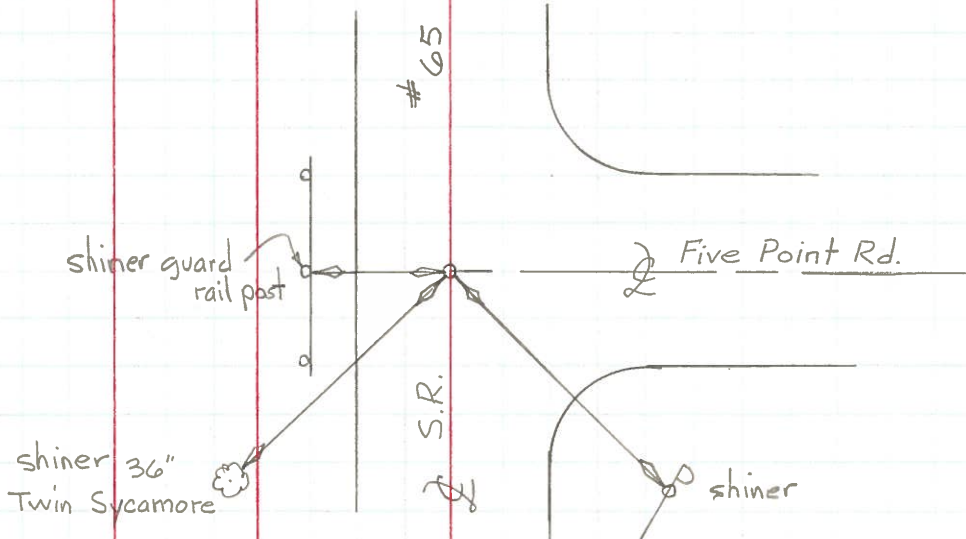
S.L.M. STA. 658+07±  
SET P.K. NAILS



PERSONNEL	TITLE	PERSONNEL	TITLE	COUNTY	Wood	DATE	Aug. 3, 1971
Tomsic		Jackson		S. R.	#65	WEATHER	Fair
Neuser				SEC.		TEMP.	70's
Vanyo							
Granata							

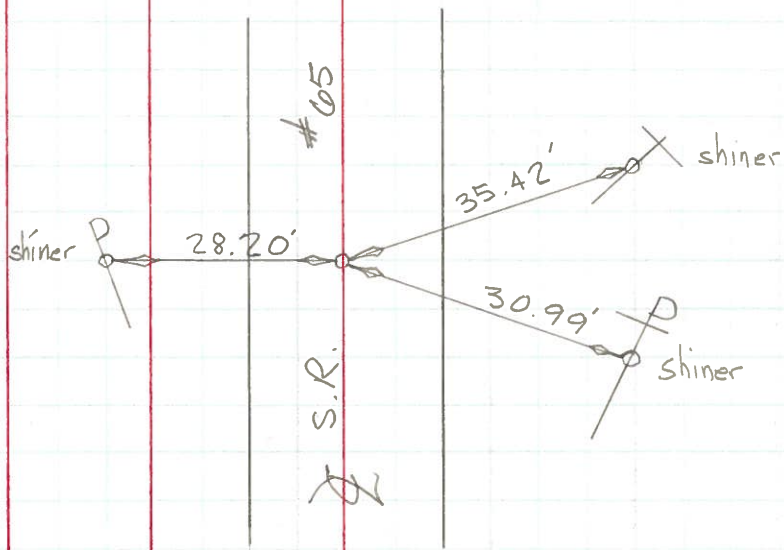
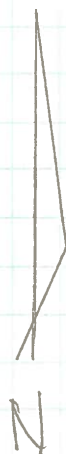
DESCRIPTION Reference Monumenting S.R. #65 JOB NO. \_\_\_\_\_

23-B



Found P. K. Nail at Surface (sta. 658+11±)

23-C



Found R.R. Spike at Surface (678+67±)

PERSONNEL TITLE PERSONNEL TITLE

BUENSIDE

COUNTY Wood

DATE 4-27-71

SMITH

S. R. #65

WEATHER Cloudy

BOWERS

MIDDLETON TWP

SPADEJA G.I.T.

SEC. 11.96 To 15.53

TEMP. +52°

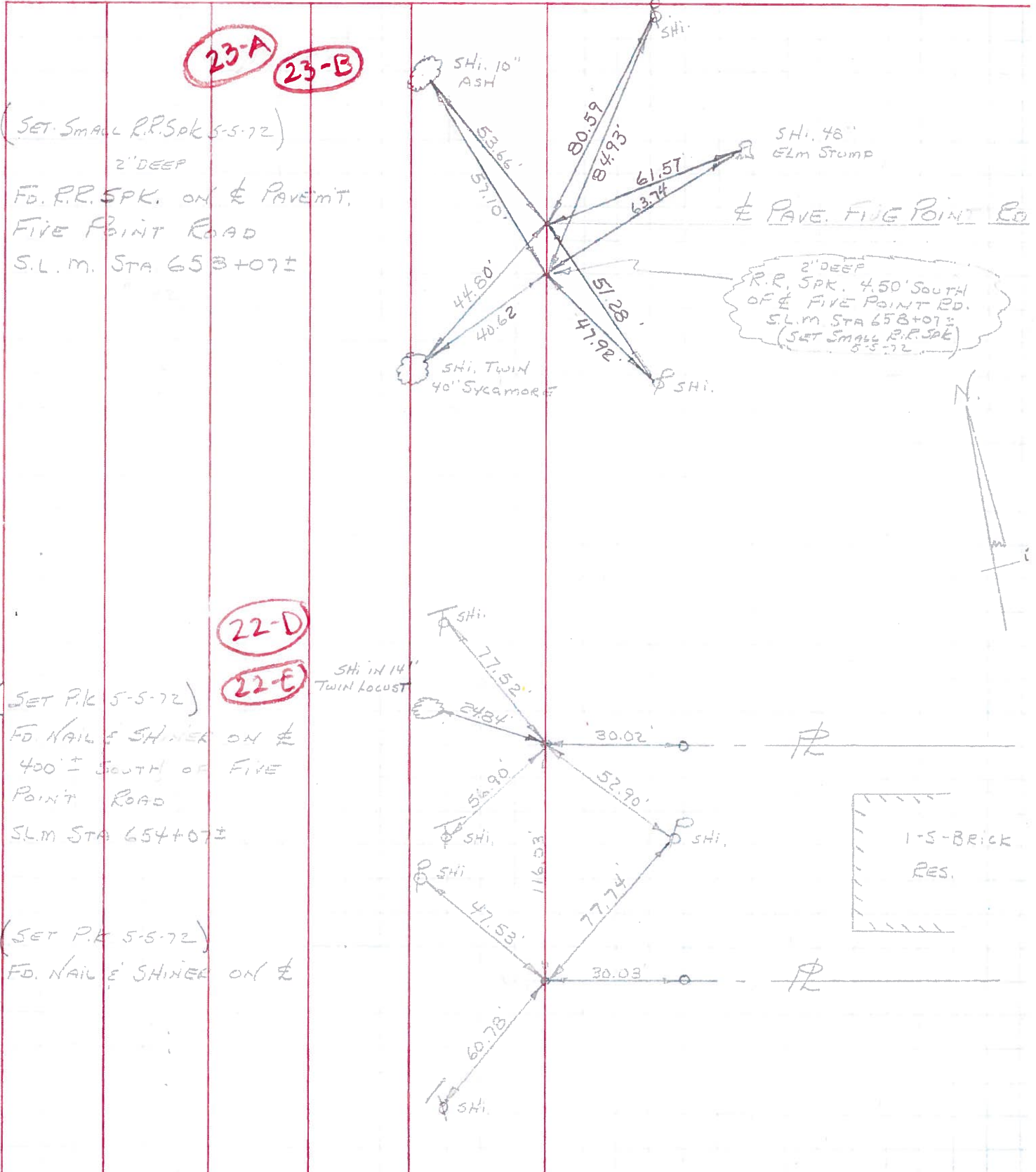
DESCRIPTION POINTS FOUND BEFORE RESURFACING

JOB NO.

LEFT

CENTER LINE

RIGHT



23-A 23-B

22-D 22-E

2' DEEP R.R. SPK. 4.50' SOUTH OF & FIVE POINT RD. S.L.M. STA 65B+07± (SET SMALL R.R. SPK 5-5-72)

1-S-BRICK RES.

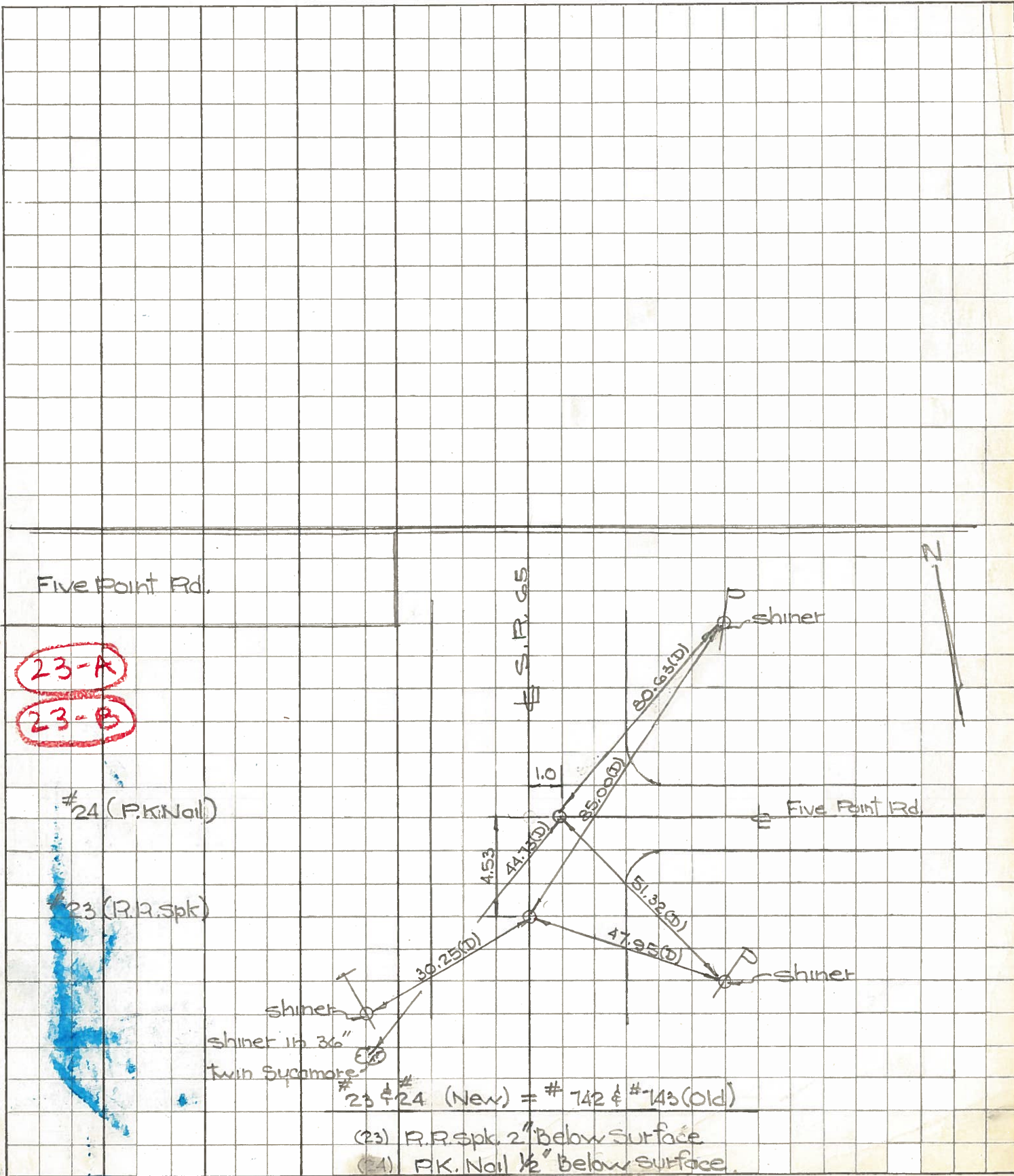


PERSONNEL	TITLE	PERSONNEL	TITLE
W. Denna			
D. Curtis			
J. Teal			
J. Brindley			

COUNTY Wood DATE June 24, 1968  
 S. R. 65 WEATHER warm  
 SEC. \_\_\_\_\_ TEMP. 85°

DESCRIPTION S.R. 65 - Ref. Mon. & Control Points - JOB NO. 02994(0)

LEFT CENTER LINE RIGHT



23-A  
23-B

#23 & #24 (New) = #742 & #143 (old)

(23) R.R. Spk. 2" below surface  
 (24) P.K. Nail 1/2" below surface

PERSONNEL	TITLE	PERSONNEL	TITLE	COUNTY	Wood	DATE	8-17-60
Delventhal	Hoover						2-23-66
Young	Rofter			S. R.	65	WEATHER	Clear
	Delventhal			SEC.	11.76 - 17.65	TEMP.	80
	Young						
	Hoff						

DESCRIPTION CONTROL POINTS JOB NO. \_\_\_\_\_

