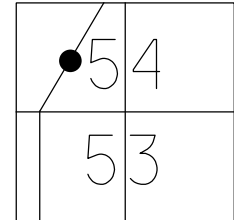


O.D.O.T. DISTRICT 2 SURVEY OFFICE (USE ONLY)

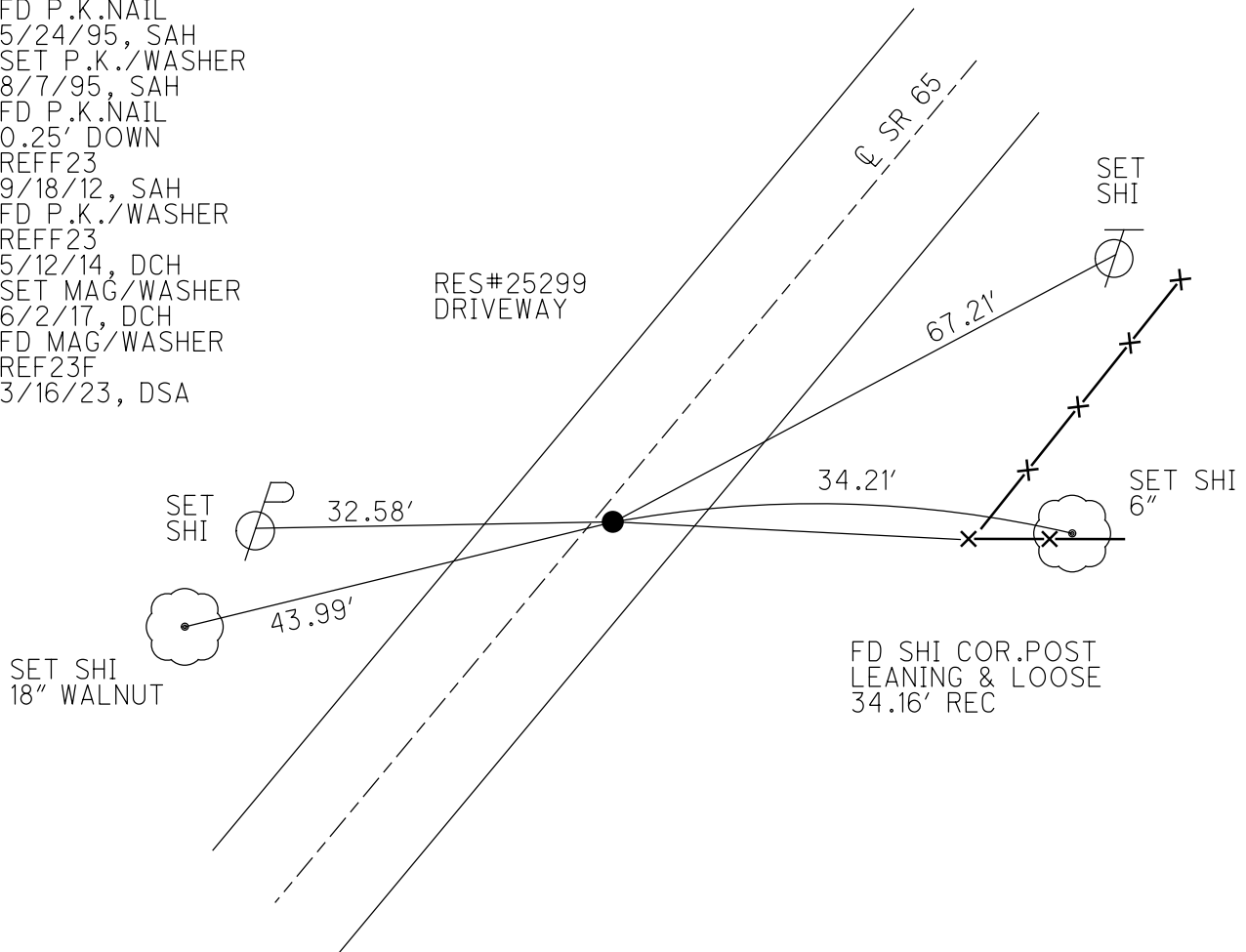
PERSONNEL _____ REFERENCE NO. 23 F SHEET 16 OF 44
 NOTES HOMAN DATE 5/12/14 ROUTE SR 65
 H.C. LEU WEATHER CLOUDY COUNTY WOOD
 R.C. HOMAN TEMP. 70° TOWNSHIP MIDDLETON
 DWG BY RHOADES PID 93680_R SECTION RT 54
 T 7 N R 10 E

TYPE MONUMENT P.K./WASHER
 ON SURFACE - ~~BELOW~~ ON
 OFFSET 0.8' RT : RT
8.9' TO RT EDGE PAVEMENT
 STATION: 703+06.05



HORZ. DATUM: NAD83 2011 GEOID: NAVD88 2018
 GRID: NORTHING: 676853.825 EASTING: 1638438.724

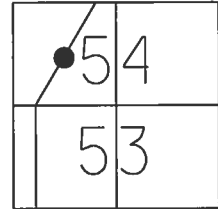
RECORD:
 FD P.K.NAIL
 10/17/84
 FD P.K.NAIL
 5/24/95, SAH
 SET P.K./WASHER
 8/7/95, SAH
 FD P.K.NAIL
 0.25' DOWN
 REFF23
 9/18/12, SAH
 FD P.K./WASHER
 REFF23
 5/12/14, DCH
 SET MAG/WASHER
 6/2/17, DCH
 FD MAG/WASHER
 REF23F
 3/16/23, DSA



O.D.O.T. DISTRICT 2 SURVEY OFFICE (USE ONLY)

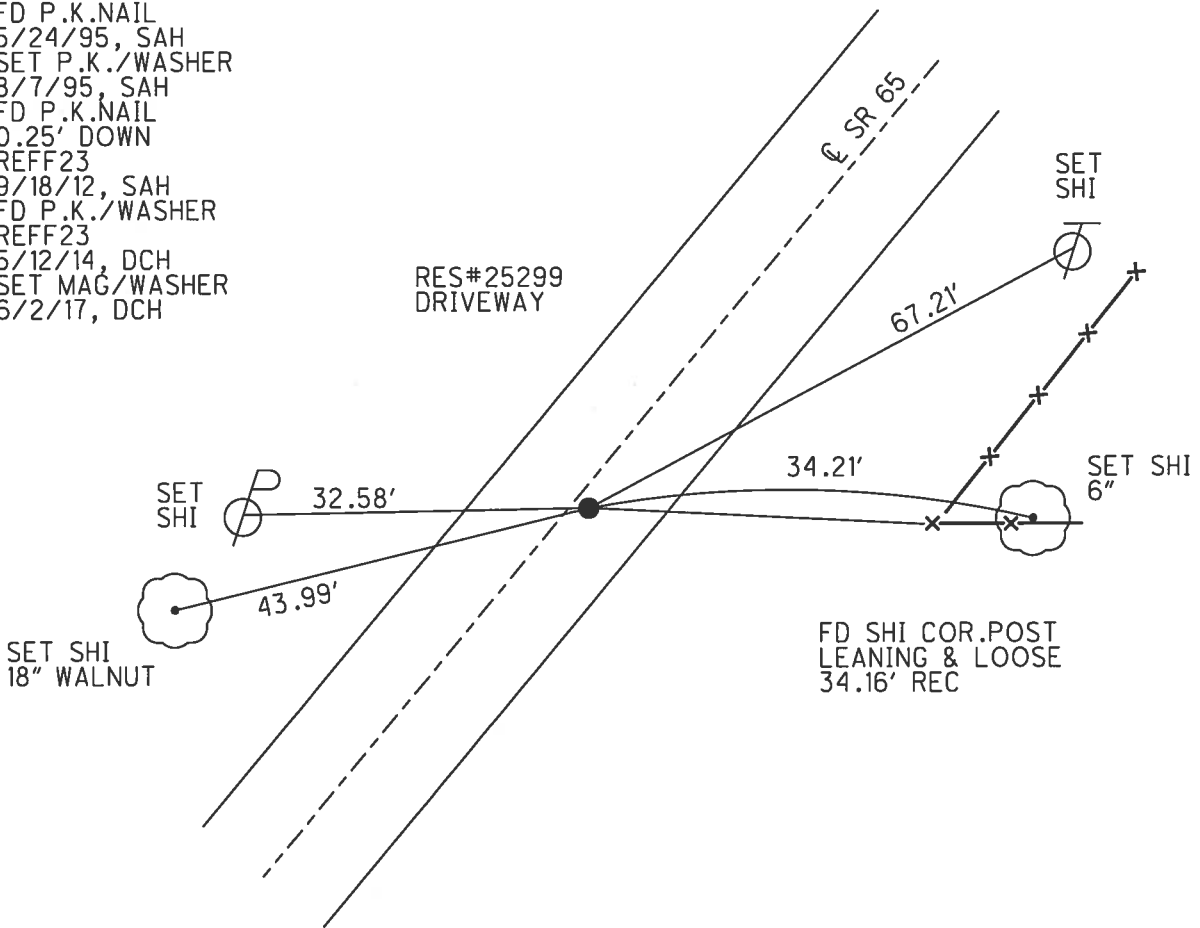
PERSONNEL _____ REFERENCE NO. 23 F SHEET 16 OF 44
 NOTES HOMAN DATE 5/12/14 ROUTE SR 65
 H.C. LEU WEATHER CLOUDY COUNTY WOOD
 R.C. HOMAN TEMP. 70° TOWNSHIP MIDDLETON
 _____ SECTION RT 54
 _____ T 7 N R 10 E

TYPE MONUMENT P.K./WASHER
 ON SURFACE - ~~BELOW~~ ON
~~LEFT~~ - PAV'T - RIGHT 0.8'
8.9' TO RT EDGE PAVEMENT
 S.L.M. 703+06.05



RECORD:
 FD P.K.NAIL
 10/17/84
 FD P.K.NAIL
 5/24/95, SAH
 SET P.K./WASHER
 8/7/95, SAH
 FD P.K.NAIL
 0.25' DOWN
 REFF23
 9/18/12, SAH
 FD P.K./WASHER
 REFF23
 5/12/14, DCH
 SET MAG/WASHER
 6/2/17, DCH

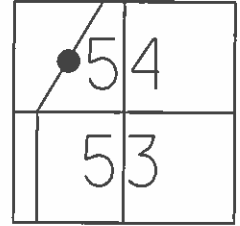
RES#25299
 DRIVEWAY



O.D.O.T. DISTRICT 2 SURVEY OFFICE (USE ONLY)

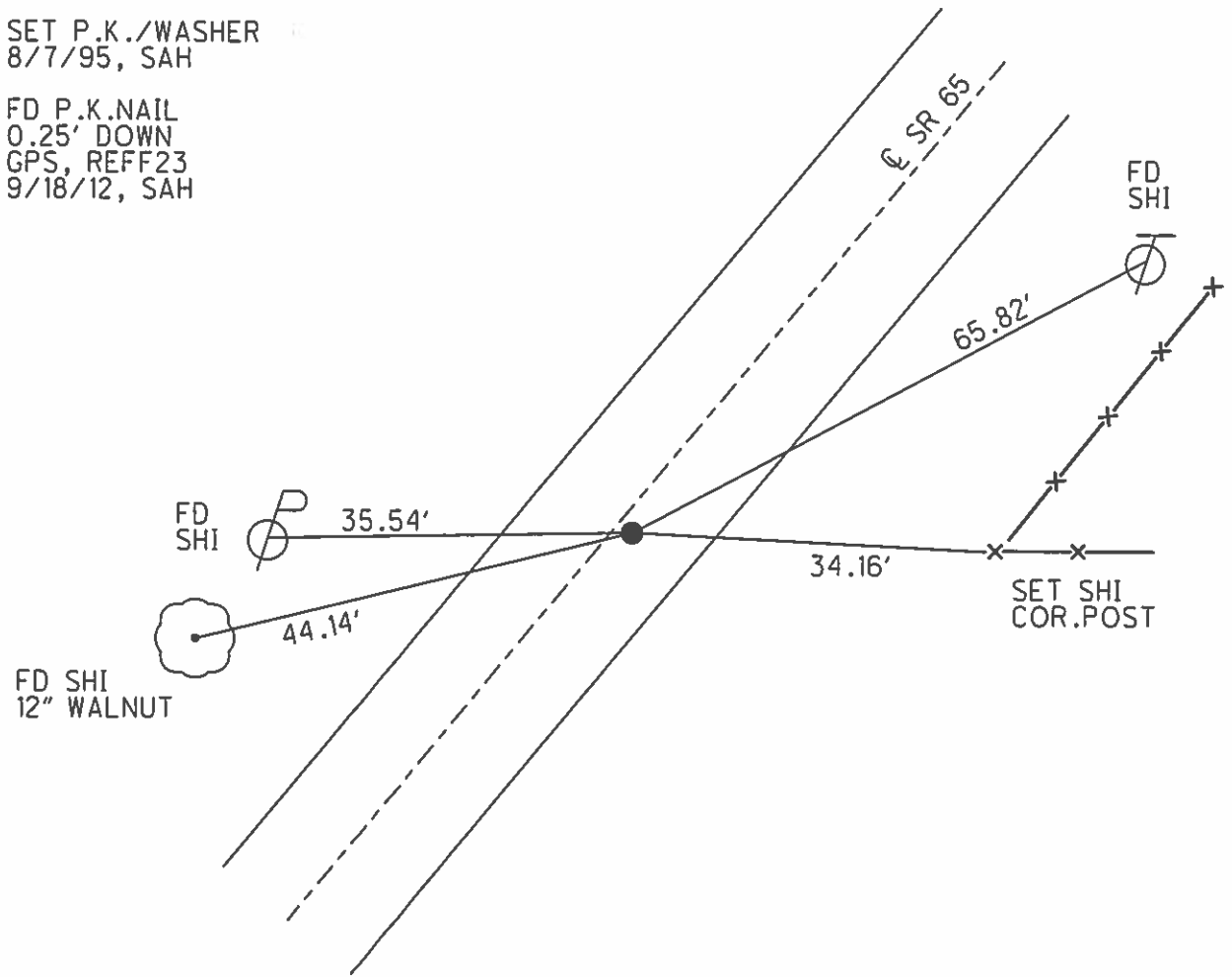
PERSONNEL _____ REFERENCE NO. 23 F SHEET 16 OF 44
 NOTES VAN DUSEN DATE 5/24/95 ROUTE SR 65
 H.C. MOSER WEATHER CLOUDY COUNTY WOOD
 R.C. HUSS TEMP. 60° TOWNSHIP MIDDLETON
 _____ SECTION RT 54
 _____ T 7 N R 10 E

TYPE MONUMENT P.K.NAIL
 ON SURFACE - ~~BELOW~~ ON
~~LEFT~~ - CL PAV'T - RIGHT 0.8'
8.9' TO RT EDGE PAVEMENT
 S.L.M. 703+06.05



Grid: Northing: 676853.921 Easting: 1638438.611

RECORD:
 FD P.K.NAIL @ SURFACE
 10/17/84
 SET P.K./WASHER
 8/7/95, SAH
 FD P.K.NAIL
 0.25' DOWN
 GPS, REFF23
 9/18/12, SAH



O.D.O.T. DISTRICT 2 SURVEY OFFICE

PERSONNEL _____

REFERENCE NO. _____

SHEET 47 OF 91

NOTES VRAJDUSEN

H.C. MUSER

R.C. HUSS

DATE 5-24-95

WEATHER Cloudy

TEMP. +60°F

ROUTE SR-65

COUNTY Wood

TOWNSHIP Middleton

SECTION RT 54

T 7 N R 10 E

TYPE MONUMENT PK/WASHER

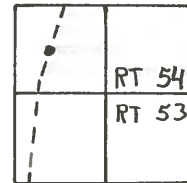
ON SURFACE - ~~BELOW~~ Yes

~~LEFT - C PAV'T.~~ - RIGHT 0.8' RT

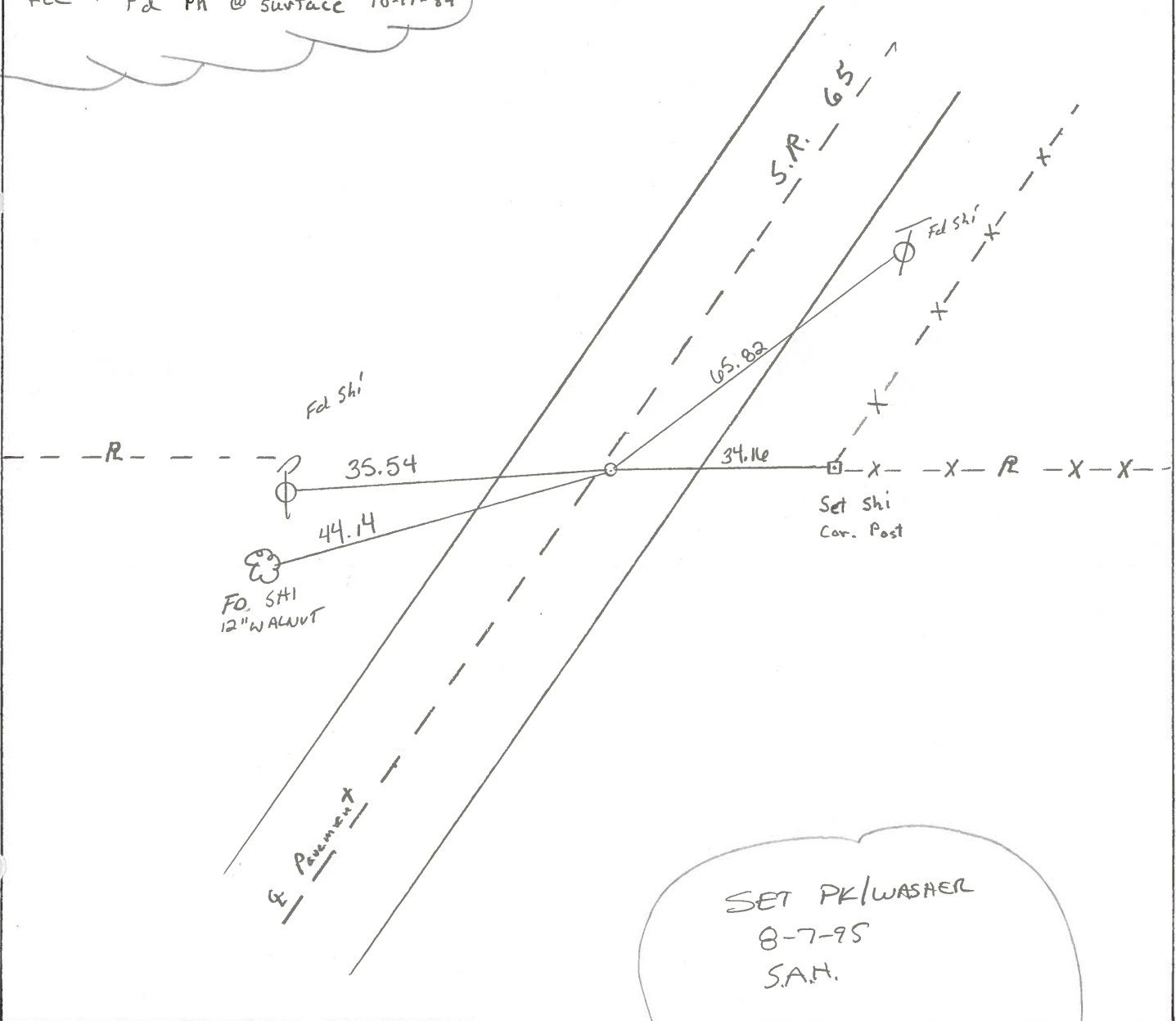
8.9' TO RT EDGE PAVEMENT

S.L.M. 701+04

23-F



Rec. Fd PK @ surface 10-17-84



SET PK/WASHER
 8-7-95
 S.A.H.

County Wood S.R. 65

Date 4-13-84

Township MIDDLETON

Weather P. CLEAR

Section R. 7. 54

Temp. 55°

T7N, R10E

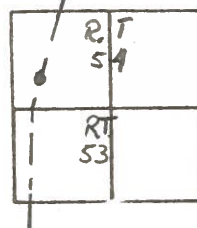
Personnel HOFFMAN

LOENRKE

HOUSEHOLDER H.C.

BARNHISEL R.C.

23-F



Fd P.K. @ surface

SLM 701+04

0.8' RT of & Pavt

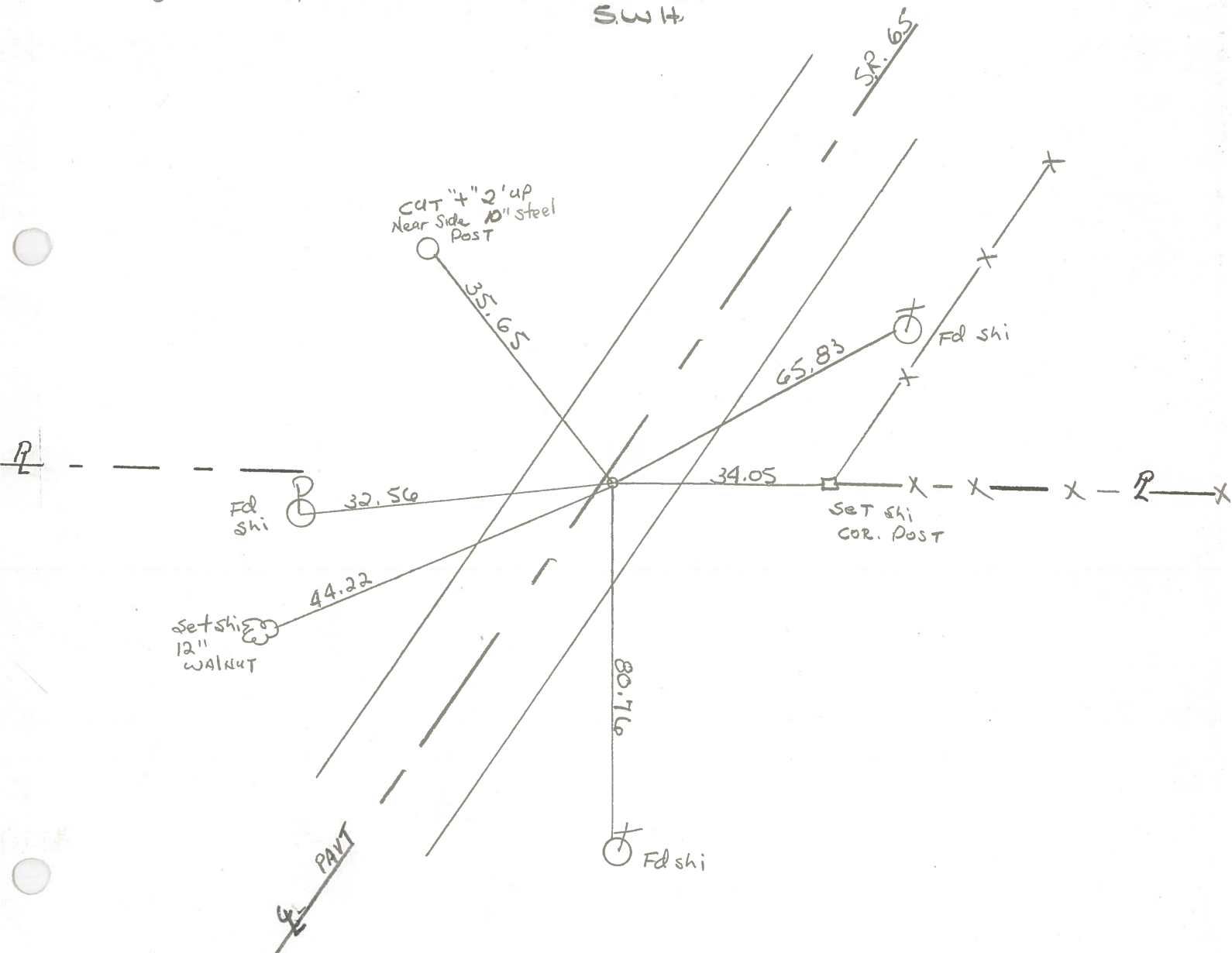
9.0' TO RT. EP

10.5' TO LT. EP

SET PK/WASHER

10-17-84

S.W.H.



O.D.O.T. DISTRICT 2 SURVEY OFFICE

SHEET 6 OF

County WOOD S.R. 65

Date 7-11-80

Township MIDDLETON

Weather _____

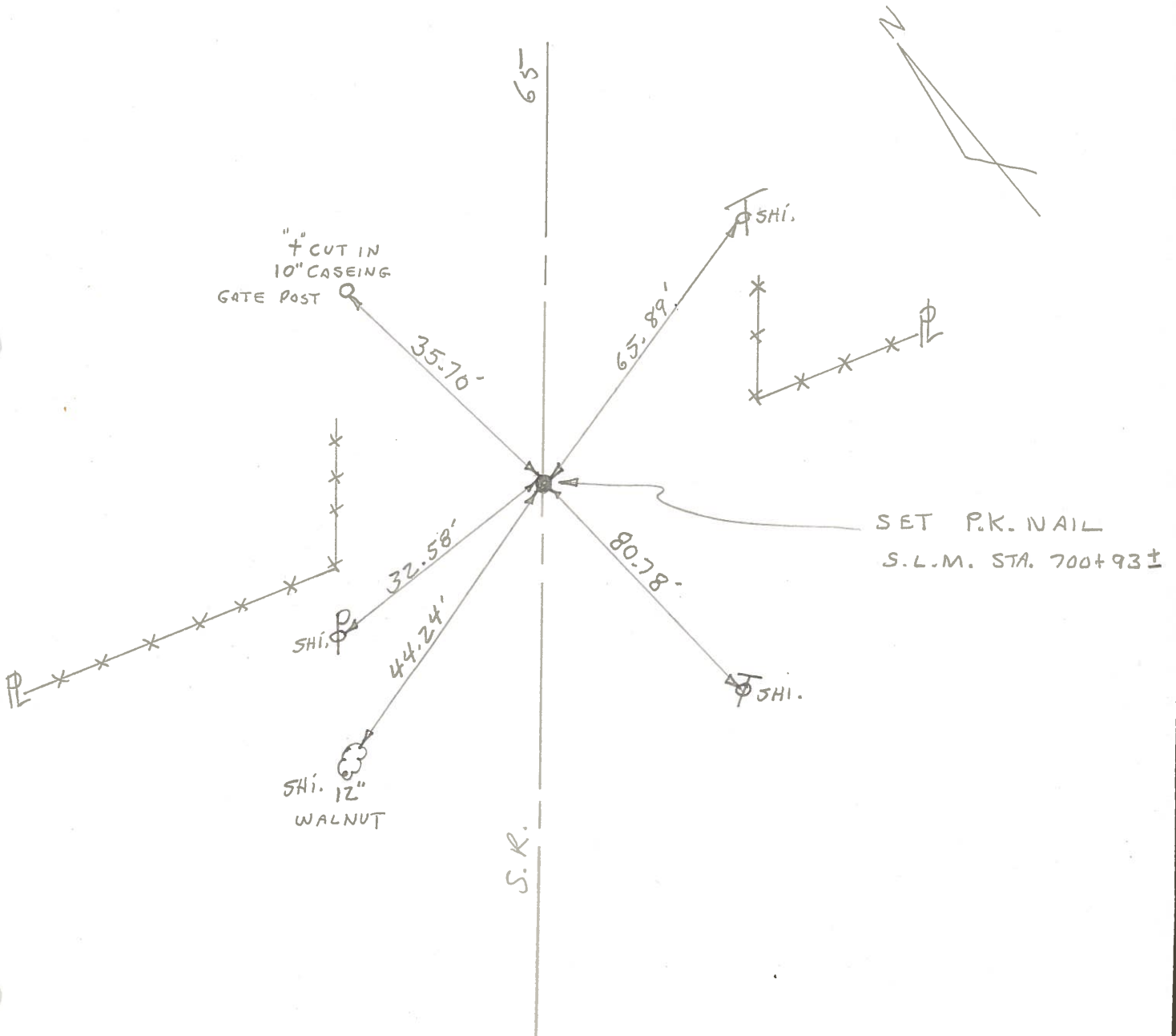
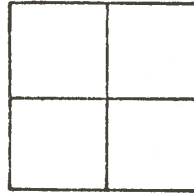
Section _____

Temp. _____

T N, R E

Personnel SMITH

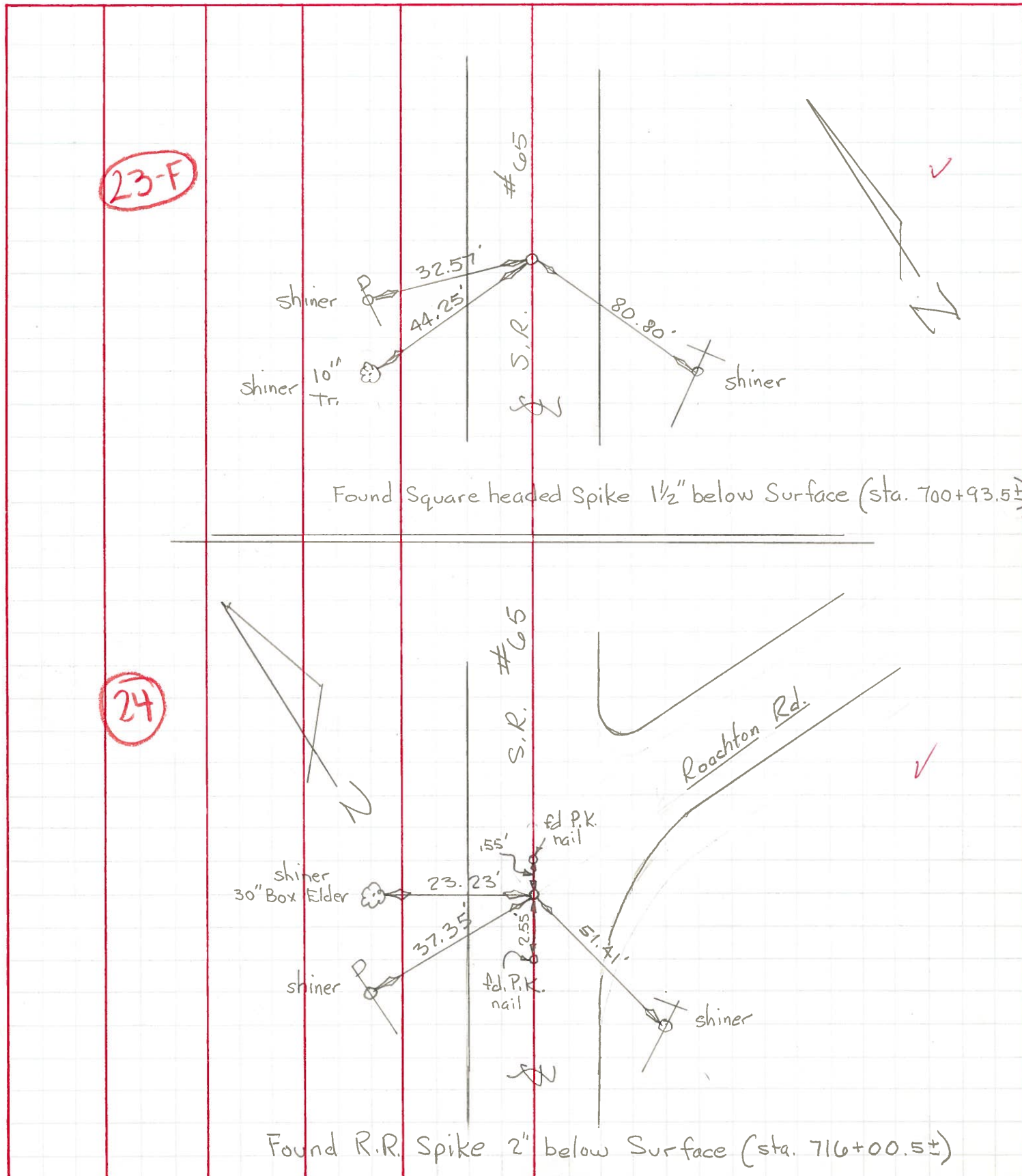
23-F



PERSONNEL	TITLE	PERSONNEL	TITLE
Tomsic		Jackson	
Neuser			
Vanyo			
Granata			

COUNTY Wood DATE Aug. 3, 1971
 S. R. #65 WEATHER P. Cloudy
 SEC. _____ TEMP. 70's

DESCRIPTION Reference Monumenting S.R. #65 JOB NO. _____



23-F

24

Found Square headed Spike 1/2" below Surface (sta. 700+93.5±)

Found R.R. Spike 2" below Surface (sta. 716+00.5±)

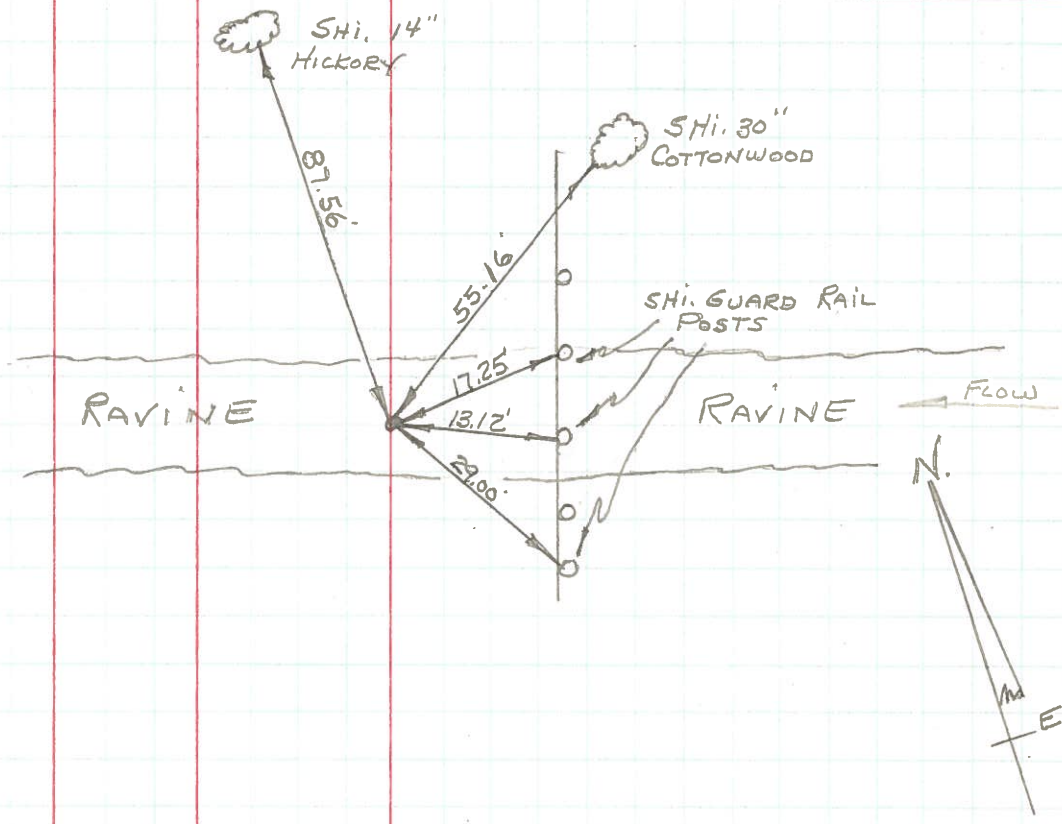
PERSONNEL	TITLE	PERSONNEL	TITLE	COUNTY	DATE
BURNSIDE				Wood	4-28-71
SMITH				S. R. #65	WEATHER LT. RAIN
BOWERS				SEC. MIDDLETON TWP	TEMP. +55°
SARDEJA	E.I.T.				

DESCRIPTION POINTS FOUND BEFORE RESURFACING JOB NO. _____

JK
4-18-72

23-J

FD. P.K. NAIL
800'± SOUTH OF
ROCHTON ROAD
S.L.M. STA. 708+99±
744
(SET P.K. 5-5-72)



OK
4-18-72

23-F

FD. 1" IRON BOLT
2" BELOW SURFACE
S.L.M. STA. 700+93±
(SET P.K. 5-5-72)

