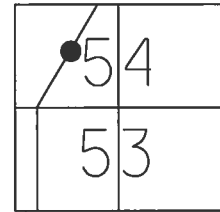


O.D.O.T. DISTRICT 2 SURVEY OFFICE (USE ONLY)

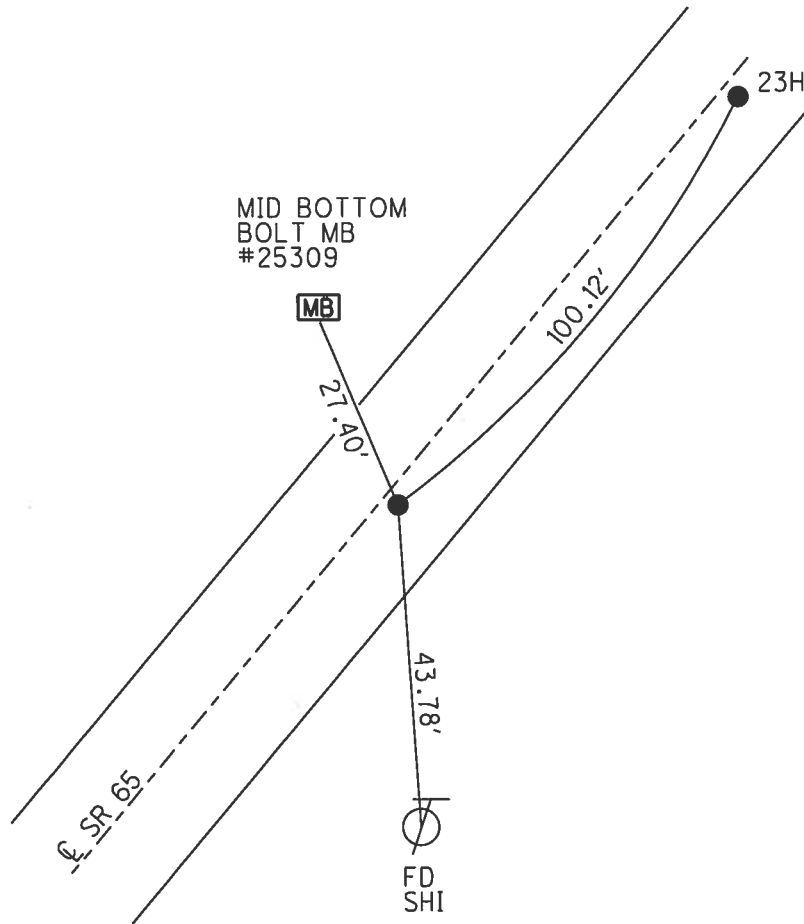
PERSONNEL \_\_\_\_\_ REFERENCE NO. 23 G SHEET 17 OF 44  
 NOTES HOMAN DATE 6/23/14 ROUTE SR 65  
 H.C. LEU WEATHER SUNNY COUNTY WOOD  
 R.C. THOMAS TEMP. 75° TOWNSHIP MIDDLETON  
 \_\_\_\_\_ SECTION RT 54  
 \_\_\_\_\_ T 7 N R 10 E

TYPE MONUMENT MAG NAIL  
 ON SURFACE - ~~BELOW~~ ON \_\_\_\_\_  
 LEFT - C PAV'T - RIGHT ON \_\_\_\_\_  
10' TO RT EDGE PAVEMENT  
 S.L.M. 705+44.52



Grid: Northing: 677052.820 Easting: 1638570.168

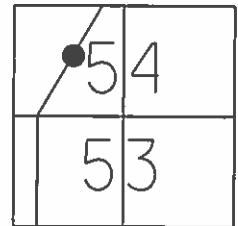
RECORD:  
 FD R.R.SPIKE  
 3" DOWN  
 ORIGIN UNKNOWN  
 SET P.K./WASHER  
 10/17/84  
 FD P.K./WASHER  
 5/24/95, SAH  
 SET P.K./WASHER  
 8/7/95, SAH  
 FD P.K.NAIL  
 REFG23  
 9/18/12, SAH  
 FD MAG NAIL  
 REFG23  
 6/23/14, DCH  
 SET MAG/WASHER  
 6/2/17, DCH



O.D.O.T. DISTRICT 2 SURVEY OFFICE (USE ONLY)

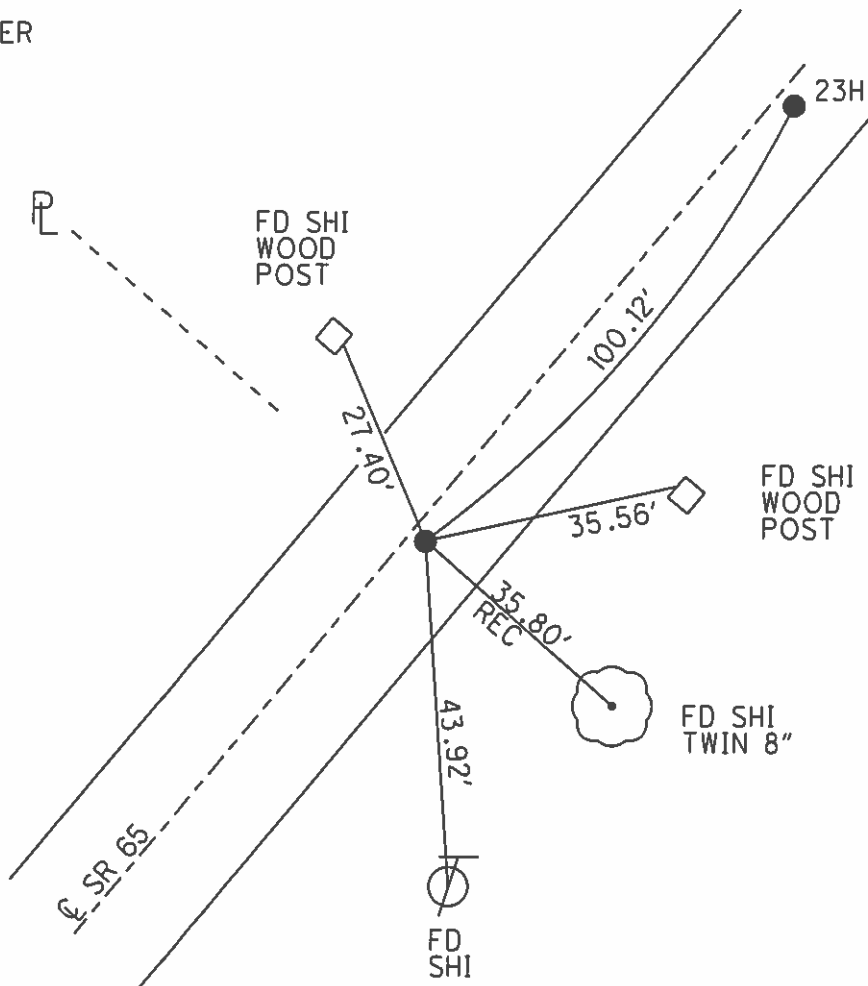
PERSONNEL \_\_\_\_\_ REFERENCE NO. 23 G SHEET 17 OF 44  
 NOTES VANDUSEN DATE 5/24/95 ROUTE SR 65  
 H.C. MOSER WEATHER CLOUDY COUNTY WOOD  
 R.C. HUSS TEMP. 60° TOWNSHIP MIDDLETON  
 SECTION RT 54  
 T 7 N R 10 E

TYPE MONUMENT P.K./WASHER  
 ON SURFACE - ~~BELOW~~ ON \_\_\_\_\_  
 LEFT - ☉ PAV'T - RIGHT ON \_\_\_\_\_  
10' TO RT EDGE PAVEMENT  
 S.L.M. 705+44.52



Grid: Northing: 677052.820 Easting: 1638570.168

RECORD:  
 SET P.K./WASHER  
 10/17/84  
  
 SET P.K./WASHER  
 8/7/95, SAH  
  
 FD P.K.NAIL  
 GPS, REFG23  
 9/18/12, SAH



# O.D.O.T. DISTRICT 2 SURVEY OFFICE

PERSONNEL \_\_\_\_\_

REFERENCE NO. \_\_\_\_\_

SHEET 48 OF 91

NOTES VAN DUSEN

H.C. MOSEK

DATE 5-24-95

ROUTE SR 65

R.C. HUSS

WEATHER CLOUDY

COUNTY Wood

TEMP. +60°F

TOWNSHIP Perrysburg

SECTION RT 54

T 7 N R 10 E

TYPE MONUMENT PK/WASHER

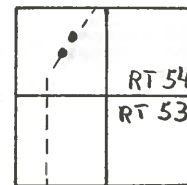
23-G

ON SURFACE - ~~BELOW~~ YES

23-H

~~LEFT - & PAV'T. - RIGHT~~ A & B

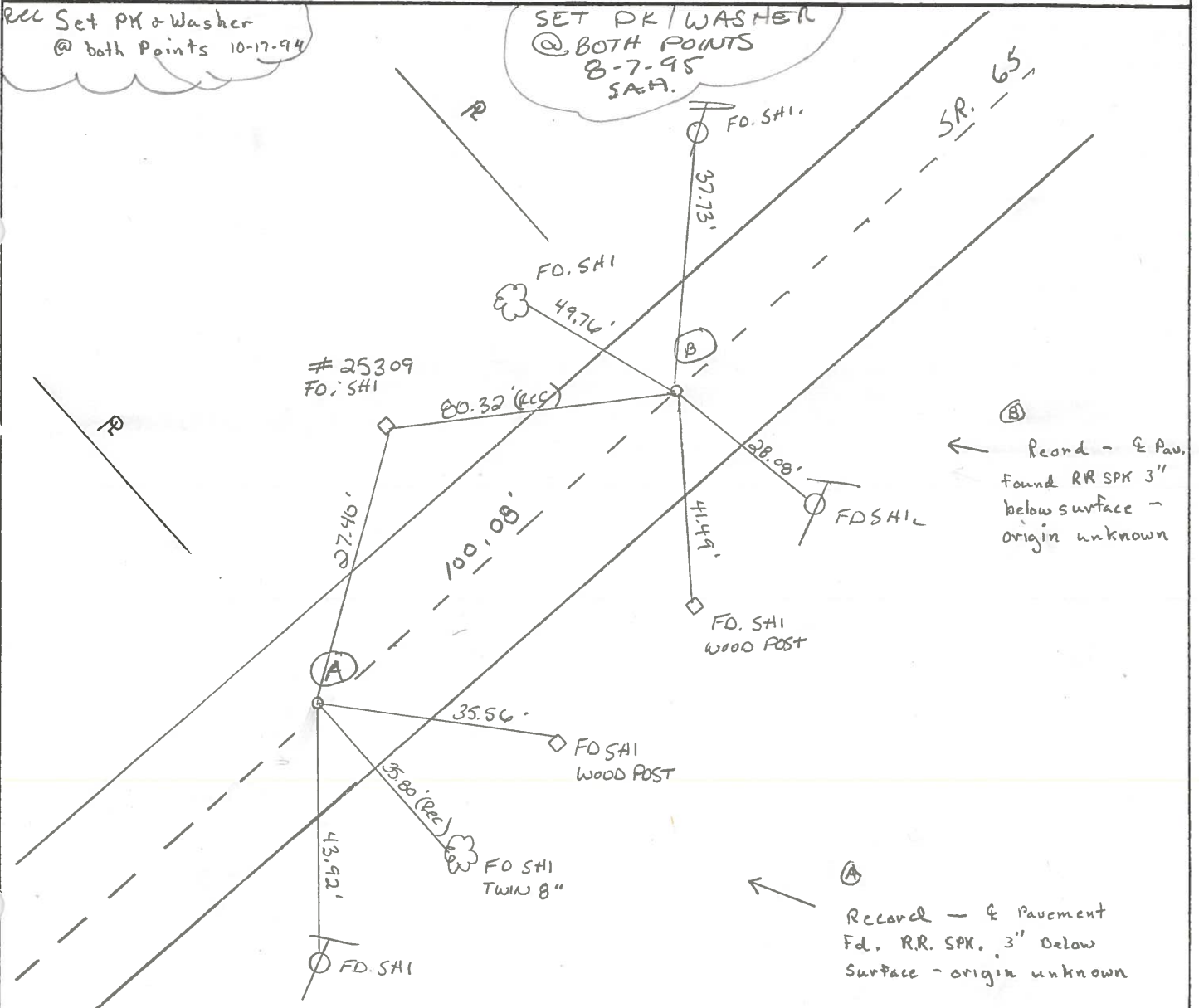
10.0 TO RT EDGE PAVEMENT



S.L.M. A = 703+42    B = 704+42

Rec Set PK + Washer @ both Points 10-17-94

SET PK/WASHER @ BOTH POINTS 8-7-95 S.A.H.



County WOOD S.R. 65

Date 4-13-84

Township PERRYSBURG

Weather P. CLEAR

Section R.T. 54

Temp. 55°

TZN, R/OE

Personnel HOFFMAN

23-G

LOEHRKE

HOUSEHOLDER H.C.

23-H

BARNHISEL R.C.

