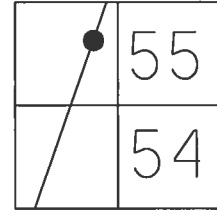


O.D.O.T. DISTRICT 2 SURVEY OFFICE (USE ONLY)

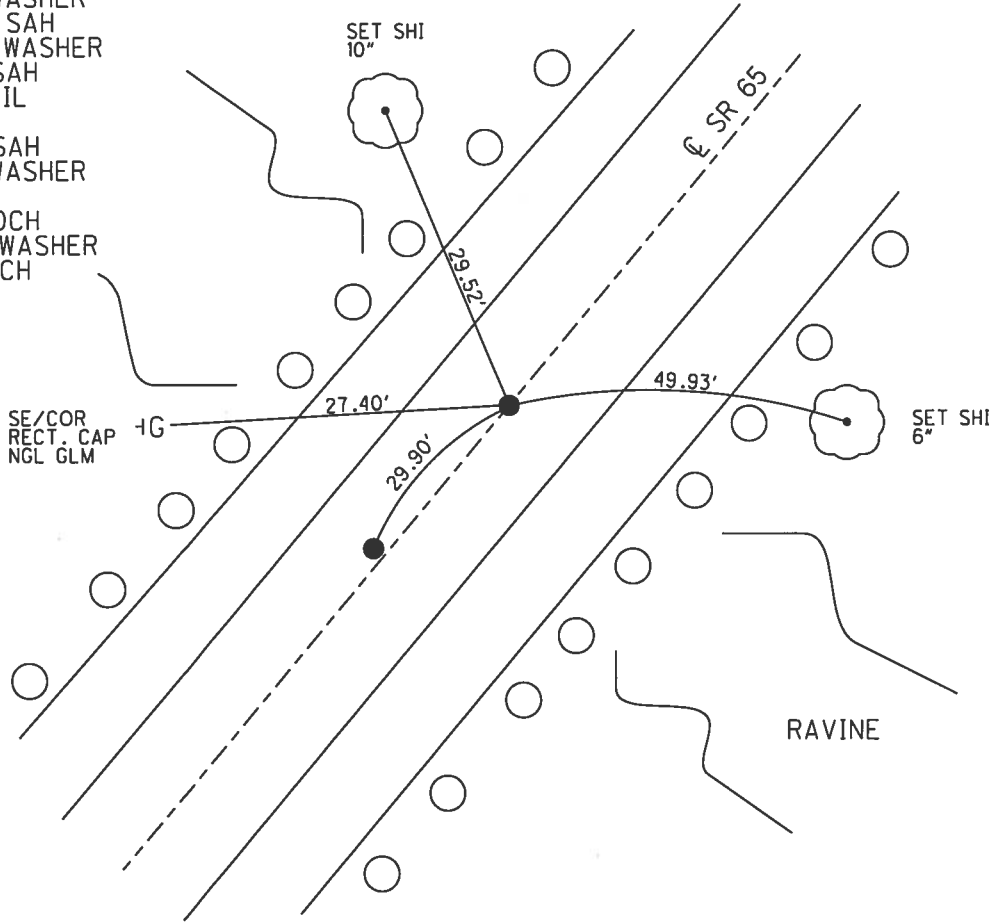
PERSONNEL _____ REFERENCE NO. 23 J SHEET 20 OF 44
 NOTES LEU DATE 6/12/14 ROUTE SR 65
 H.C. WESTFALL WEATHER CLOUDY COUNTY WOOD
 R.C. HOMAN TEMP. 69° TOWNSHIP MIDDLETON
RHOADES SECTION RT 55
 T 7 N R 10 E

TYPE MONUMENT P.K./WASHER
 ON SURFACE - ~~BELOW~~ ON _____
 LEFT - ☉ PAV'T - RIGHT ON _____
9.9' TO LT EDGE PAVEMENT
 S.L.M. 711+85



Grid: Northing: 677525.957 Easting: 1638883.204

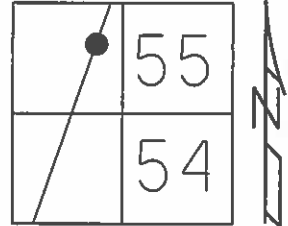
RECORD:
 SET P.K./WASHER
 10/17/84
 FD P.K./WASHER
 5/24/95, SAH
 SET P.K./WASHER
 8/7/95, SAH
 FD P.K. NAIL
 REFJ23
 9/18/12, SAH
 FD P.K./WASHER
 REFJ23
 6/12/14, DCH
 SET MAG/WASHER
 6/2/17, DCH



O.D.O.T. DISTRICT 2 SURVEY OFFICE (USE ONLY)

PERSONNEL _____ REFERENCE NO. 23 J SHEET 20 OF 44
 NOTES VAN DUSEN DATE 5/24/95 ROUTE SR 65
 H.C. MOSER WEATHER CLOUDY COUNTY WOOD
 R.C. HUSS TEMP. 60° TOWNSHIP MIDDLETON
 SECTION RT 55
 T 7 N R 10 E

TYPE MONUMENT P.K./WASHER
 ON SURFACE - ~~BELOW~~ ON
 LEFT - ☉ PAV'T - RIGHT ON
10.3' TO LT EDGE PAVEMENT
 S.L.M. 711+85

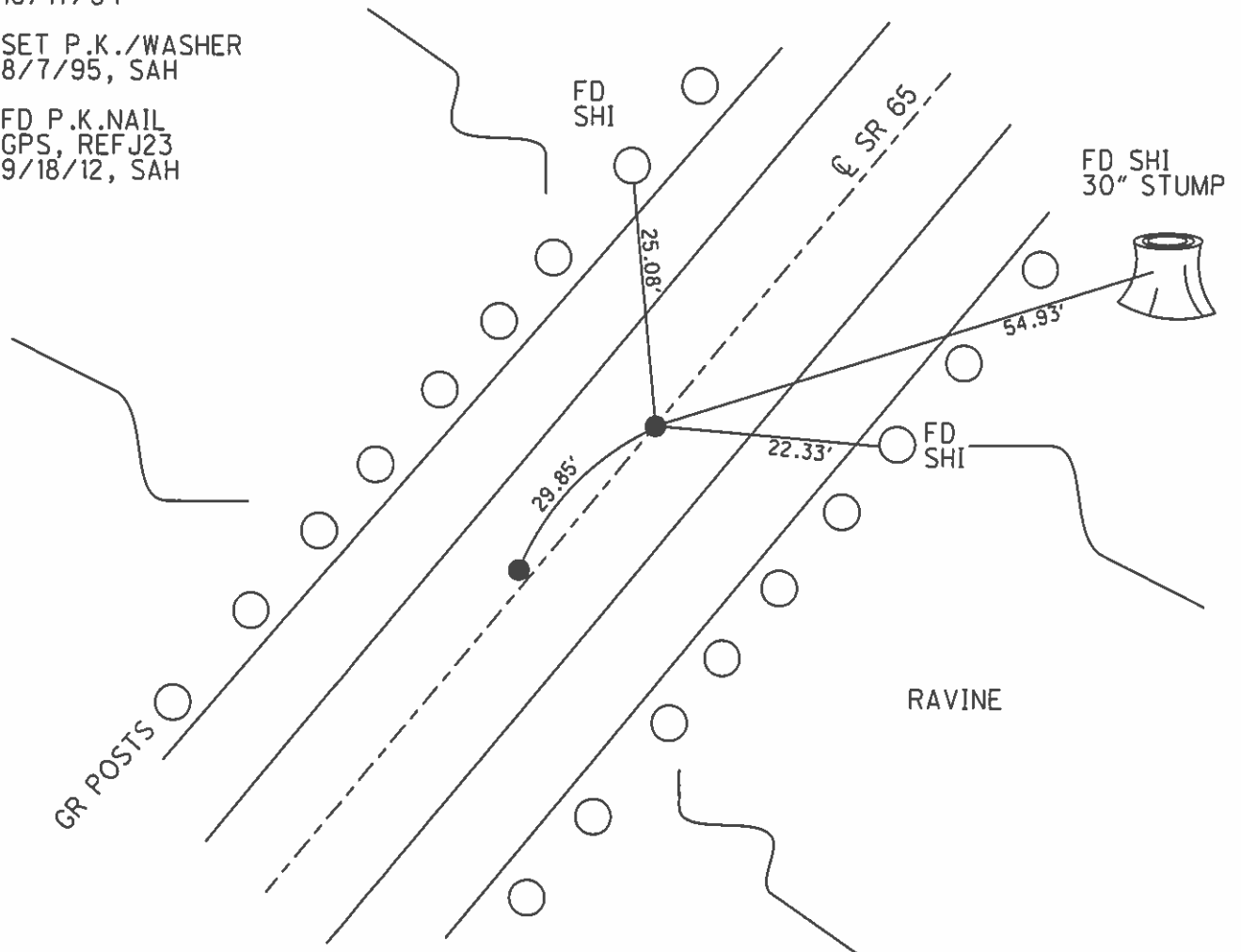


Grid: Northing: 677525.957 Easting: 1638883.204

RECORD:
 SET P.K./WASHER
 10/17/84

SET P.K./WASHER
 8/7/95, SAH

FD P.K.NAIL
 GPS, REFJ23
 9/18/12, SAH



O.D.O.T. DISTRICT 2 SURVEY OFFICE

PERSONNEL _____

REFERENCE NO. _____

SHEET 49 OF 91

NOTES VAU DUSEN

H.C. MOSER

R.C. HUSS

DATE 5-24-95

WEATHER CLOUDY / DRIZZLE

TEMP. +60°F

ROUTE SR 65

COUNTY Wood

TOWNSHIP Middleton

SECTION RT - 55

T 7 N R 10 E

TYPE MONUMENT PK/WASHER

ON SURFACE - BELOW

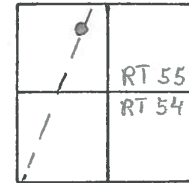
LEFT- & PAV'T. - RIGHT A=0.5' LT B=0.0' R

<sup>A=7.9
B=10.3</sup> TO LT EDGE PAVEMENT

S.L.M. A=709+10 B=708+80

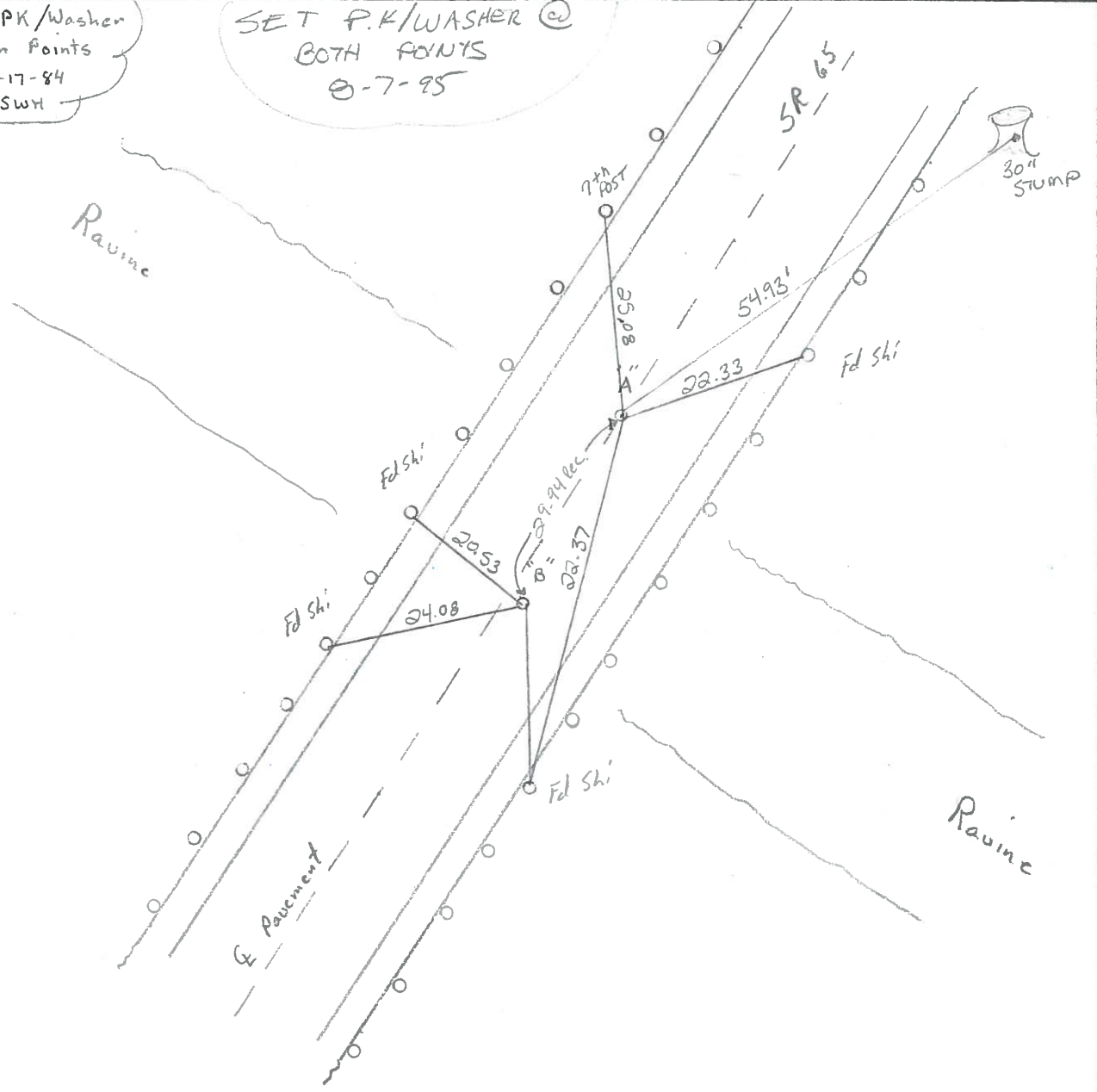
23-I

23-J



REC Set PK/Washer
Both Points
10-17-84
SWH

SET P.K/WASHER @
BOTH POINTS
8-7-95



County WOOD S.R. 65

Date 4-13-84

Township MIDDLETON

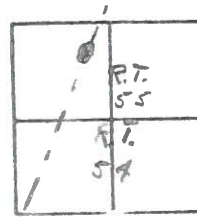
Weather P. CLEAR

Section R.O. 55

Temp. 55°

T7N, R10E

Personnel HOFFMAN



23-I
23-J

LOENRKE
HOUSEHOLDER H.C.
BALNHISEL R.C.

"A" Fd P.K. @ SURFACE

SLM 709+10

out of PAWT

SET PK/WASHER

8.8' TO LT. EP.

@ BOTH POINTS

9.6' TO RT. EP.

10-17-84

S.W.H.

PAWT. SR 65

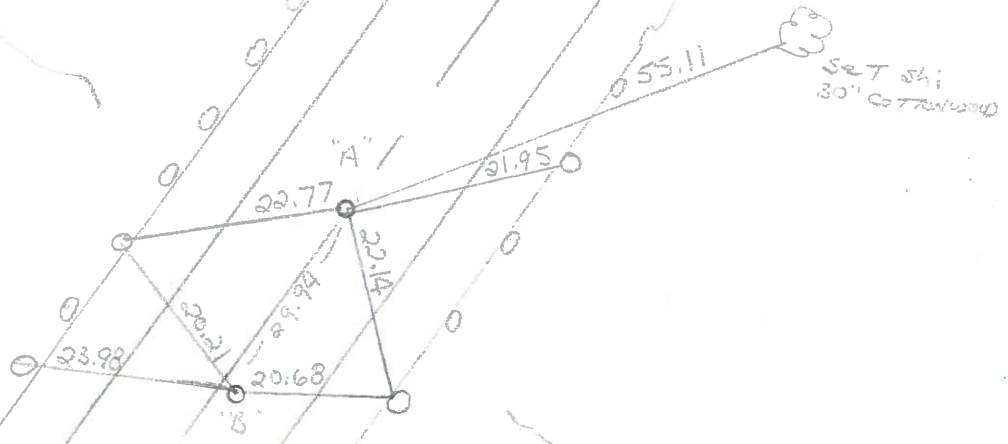


"B" Fd P.K. @ SURF.

0.7' RT. of PAWT

8.8' TO RT. EP.

9.5' TO LT. EP.



County WOOD S.R. 65

Date 7-11-80

Township MIDDLETON

Weather FAIR

Section R.T. 55

Temp. 82°

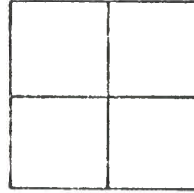
T N, R E

Personnel SMITH

BOWERS

23-I

23-J



RESET P.K. NAIL
800 ± SOUTH OF
ROACHTON ROAD
S.L.M. STA. 708+99 ±

65

SNI. 14' HICKORY

SNI. 30' COTONWOOD

61.18'

55.78'

12.00'

29.25'

67.30'

S.R.

RESET P.K. NAIL
S.L.M. STA. 708+99 ±

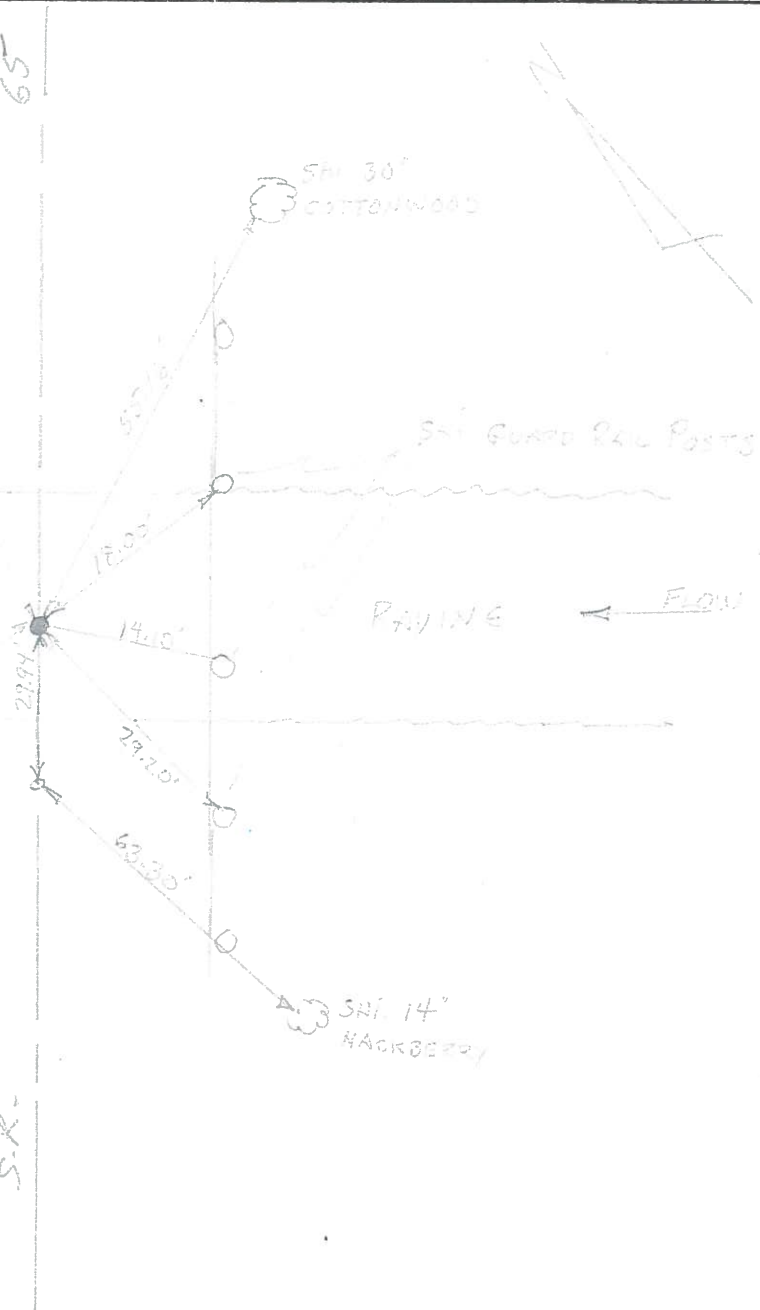
RAVINE

SNI. GUARD RAIL POSTS

RAVINE

← FLOW

SNI. 14' HACKBERRY



PERSONNEL TITLE PERSONNEL TITLE

BURNSIDE
SMITH
BOUERS
SARDEJA E.I.T.

COUNTY Wood DATE 4-28-71
S. R. #65 WEATHER LT. RAIN
SEC. MIDDLETON TWP TEMP. +55°

DESCRIPTION POINTS FOUND BEFORE RESURFACING JOB NO. _____

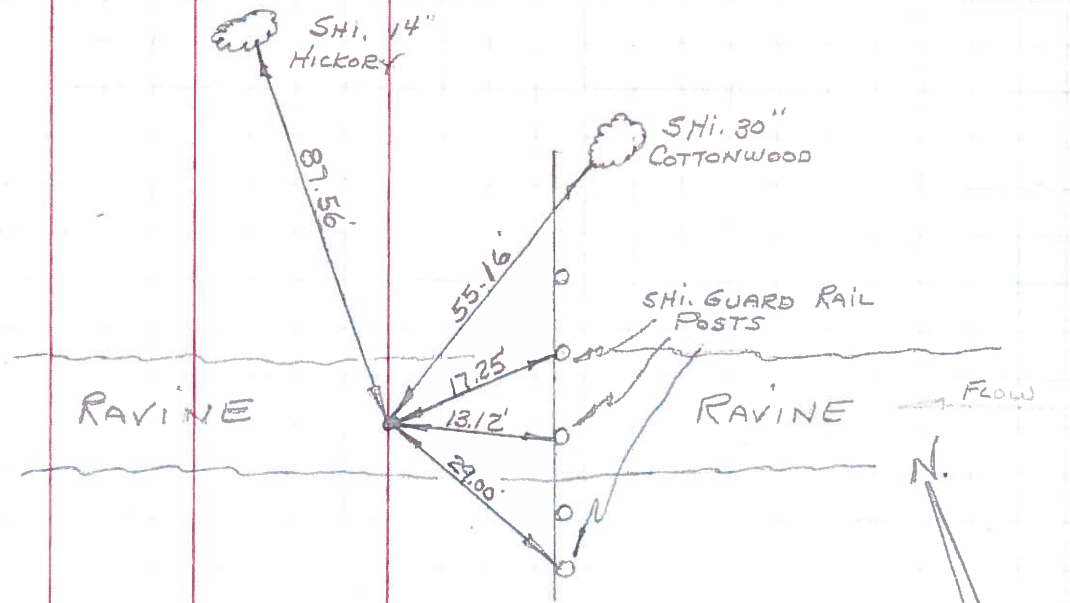
LEFT CENTER LINE RIGHT

3-72

23-J

FD. P.K. NAIL
800± SOUTH OF
ROACHTON ROAD
S.L.M. STA. 708+99±

(SET P.K. 5-5-72)



3-72

23-F

FD. 1" IRON BOLT
2" BELOW SURFACE
S.L.M. STA. 700+93±

(SET P.K. 5-5-72)

