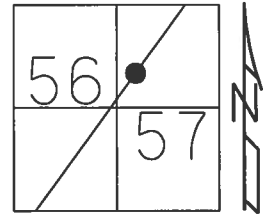


O.D.O.T. DISTRICT 2 SURVEY OFFICE (USE ONLY)

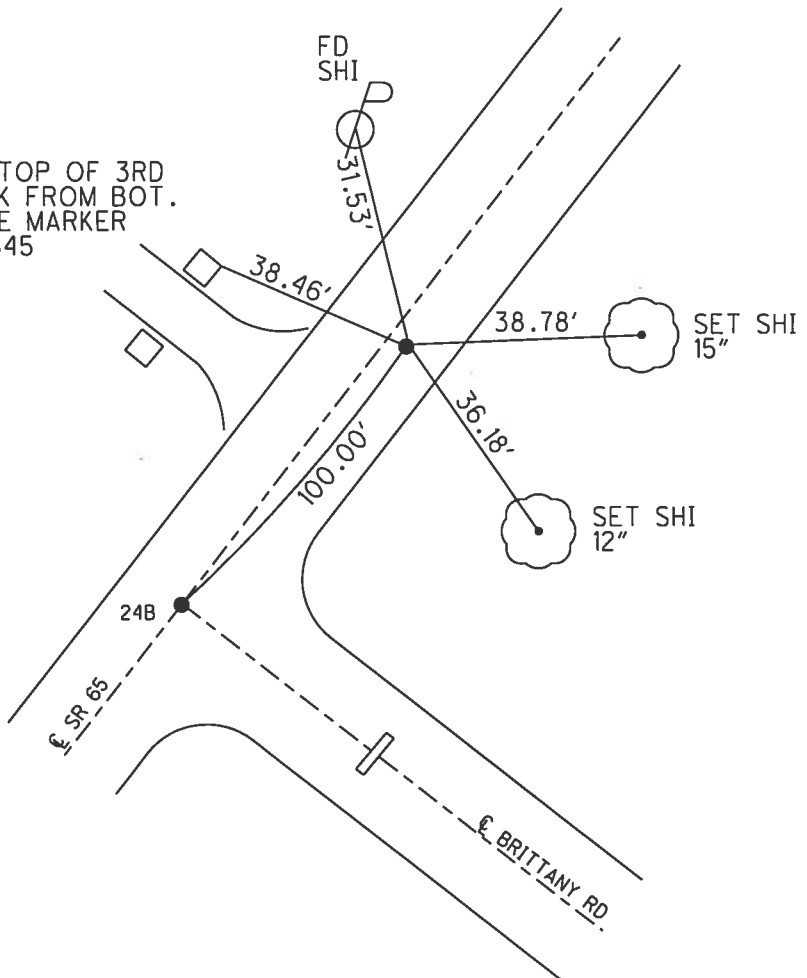
PERSONNEL _____ REFERENCE NO. 24 C SHEET 25 OF 44
 NOTES LEU DATE 6/12/14 ROUTE SR 65
 H.C. HOMAN WEATHER CLOUDY COUNTY WOOD
 R.C. WESTFALL TEMP. 71° TOWNSHIP PERRYSBURG
RHOADES SECTION RT 57
 _____ T 7 N R 10 E

TYPE MONUMENT P.K./WASHER
~~ON SURFACE~~ - BELOW 3"
~~LEFT~~ - Q PAV'T - RIGHT 3.0'
6.8' TO RT EDGE PAVEMENT
 S.L.M. 740+00.02



RECORD:
 FD LG.R.R.SPIKE
 10/17/84
 SLM. 737+99
 FD P.K./WASHER
 5/23/95, SAH
 SET P.K./WASHER
 8/8/95, SAH
 FD P.K./WASHER
 REFC24
 9/18/12, SAH
 FD P.K.NAIL
 3" BELOW
 REFC24
 6/12/14, DCH
 SET MAG/WASHER
 3/16/16, DCH

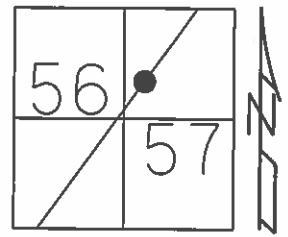
USE TOP OF 3RD
 BRICK FROM BOT.
 DRIVE MARKER
 #25845



O.D.O.T. DISTRICT 2 SURVEY OFFICE (USE ONLY)

PERSONNEL _____ REFERENCE NO. 24 BB SHEET 25 OF 44
 NOTES VAN DUSEN DATE 5/23/95 ROUTE SR 65
 H.C. MOSER WEATHER SUNNY COUNTY WOOD
 R.C. HUSS TEMP. 80° TOWNSHIP PERRYSBURG
 _____ CORDES SECTION RT 57
 _____ T 7 N R 10 E

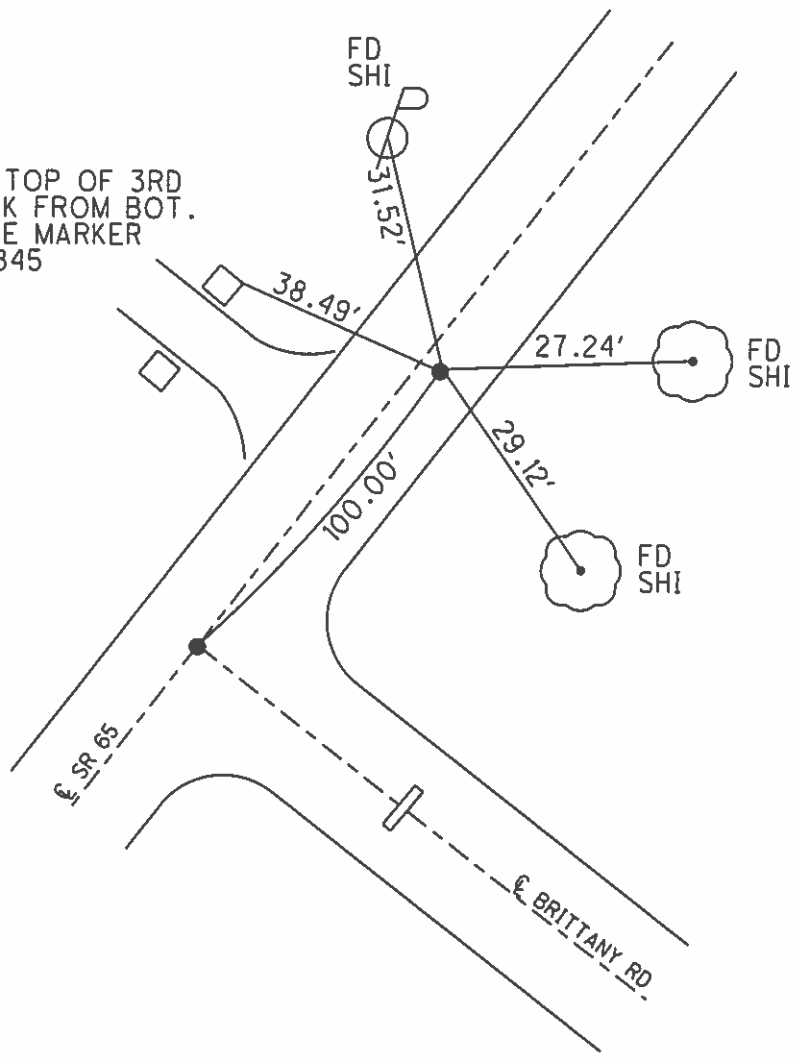
TYPE MONUMENT P.K./WASHER
 ON SURFACE - ~~BELOW~~ ON _____
~~LEFT~~ - CL PAV'T - RIGHT 3.0'
6.8' TO RT EDGE PAVEMENT
 S.L.M. 740+00.02
 Grid: Northing: 679934.129 Easting: 1640477.641



RECORD:
 FD LG.R.R.SPIKE
 AT SURFACE.
 10/17/84

SET P.K./WASHER
 8/8/95, SAH

USE TOP OF 3RD
 BRICK FROM BOT.
 DRIVE MARKER
 #25845



O.D.O.T. DISTRICT 2 SURVEY OFFICE

PERSONNEL _____

REFERENCE NO. _____

SHEET 53 OF 91

NOTES VAN DUSEN

H.C. MOSEK

R.C. HUSS

CORRES

DATE 5-23-95

WEATHER SUNNY

TEMP. +80°F

ROUTE Wood

COUNTY SR-65

TOWNSHIP Pennysburg

SECTION R.T. 57-38

T 7 N R 10 E

TYPE MONUMENT PK/WASHER

ON SURFACE - BELOW

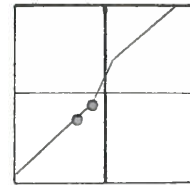
~~LEFT~~ - PAV'T. - RIGHT A=4 B=3.0' RT

^{A-10.7}
^{B-6.6} TO RT EDGE PAVEMENT

S.L.M. A = 736+99 B = 737+99

24-B

24-C



RECORD PT A

FD LARGE R.F. SPK @
SURFACE & PAINT
S.R. 65 10.7' LTER.
SET BY H. FLEY FOR
WILLOWBEND SUB.
(FARNAHM, WILRES & BERNING)
10-17-84

RECORD PT B

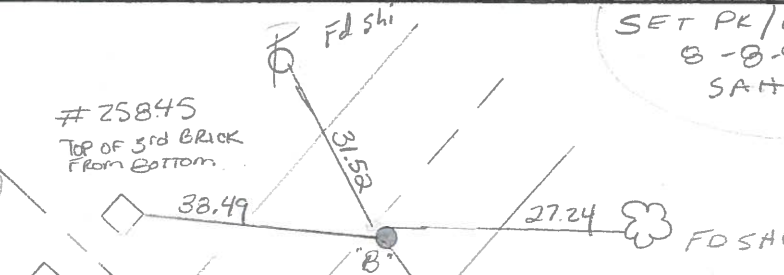
FD. SMALL R.R. SPK
@ SURFACE
SLM 737+99

SET PK/WASHER
B-8-95
SAH

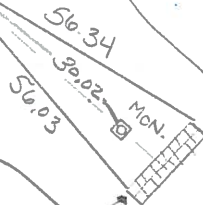
25845
TOP OF 3rd BRICK
FROM BOTTOM

FD. SHI
29.64'

48.34



USE TOP OF 8th
BRICK FROM
BOTTOM OF BRICK
DRIVE MARKER
25815



USE TOP CORNER OF
BRICK BASE FOR
"DIVISION SIGN"
"BOTH SIDES"

Q. R/W BRITANNY ROAD

County WOOD S.R. 65

Date 4-16-84

Township PERRYSBURG

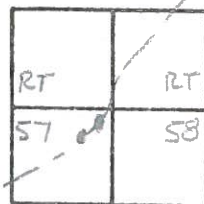
Weather Cloudy

Section RT. 57-58 (Willow Bend Sub.)

Temp. 45°

T7N, R10E

Personnel HOFFMAN



24-B

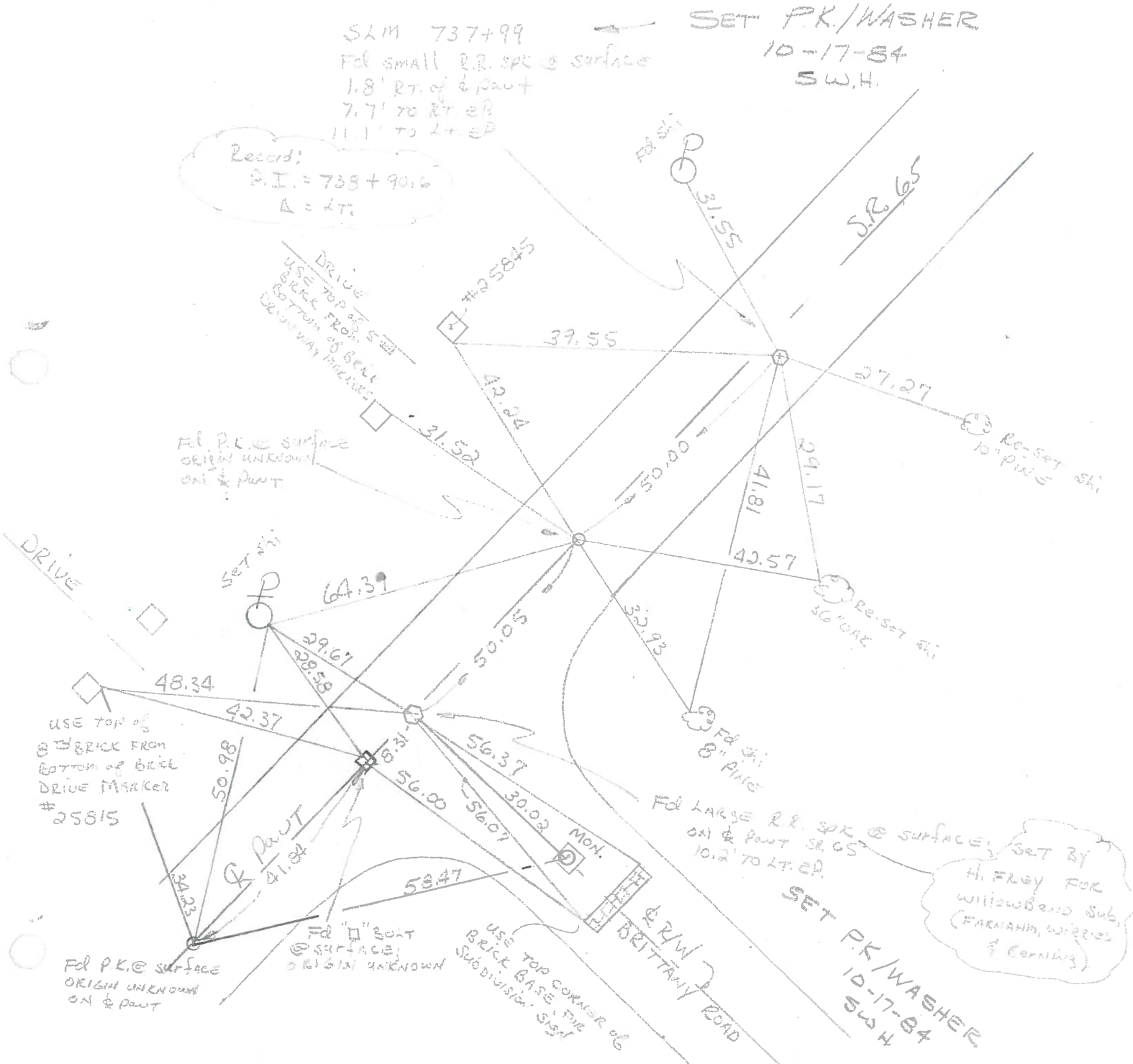
24-C

LOEHRKE	
HOUSEHOLDER	H.C.
BAKHNISEL	R.C.

S.L.M. 737+99
 Fd small R.R. spk @ surface
 1.8' RT. of & PAWT
 7.7' TO RT. EP
 11.1' TO LT. EP

SET P.K./WASHER
 10-17-84
 S.W.H.

Record:
 B.I. = 738+90.6
 Δ = 47.



Drive
 USE TOP OF SET
 BRICK FROM
 BOTTOM OF BEST
 DRIVEWAY MARKER

Fd P.K. @ surface
 ORIGIN UNKNOWN
 ON & PAWT

USE TOP OF
 BRICK FROM
 BOTTOM OF BRICK
 DRIVE MARKER
 # 25815

Fd P.K. @ surface
 ORIGIN UNKNOWN
 ON & PAWT

Fd 1" Bolt
 @ surface
 ORIGIN UNKNOWN

USE TOP CORNER OF
 BRICK BASE FOR
 SUBDIVISION SIGN

Fd LARGE R.R. SPK @ surface,
 ON & PAWT SR 65
 10.2' TO LT. EP.

SET P.K./WASHER
 10-17-84
 S.W.H.

SET BY
 H. FLOY FOR
 Willow Bend Sub.
 (FARMHAND, WIREES
 & CORNING)

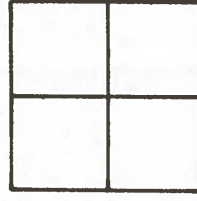
Q.D.O.T. DISTRICT 2 SURVEY OFFICE

11-A
Sht. 1 of 3

County WOOD S.R. 65
Township PERRYSBURG
Section _____ (WILLOW BEND SUBDIVISION)
T1N, R10E
Personnel BURNSIDE
SMITH
MEAD

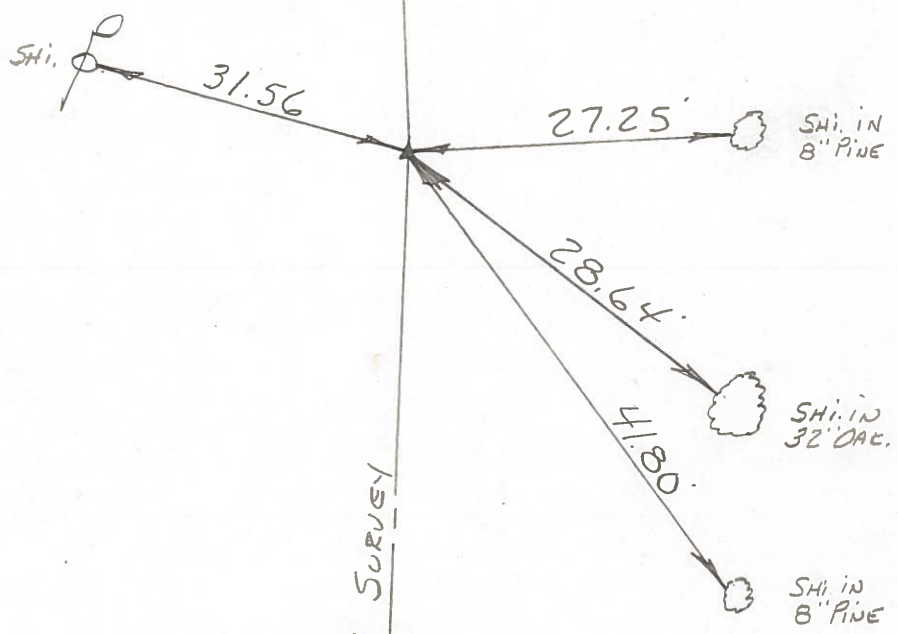
Date 11-8-79
Weather CLOUDY - LT. RAIN
Temp. +40°

24-C



± R/W S.R. 65

± SURVEY

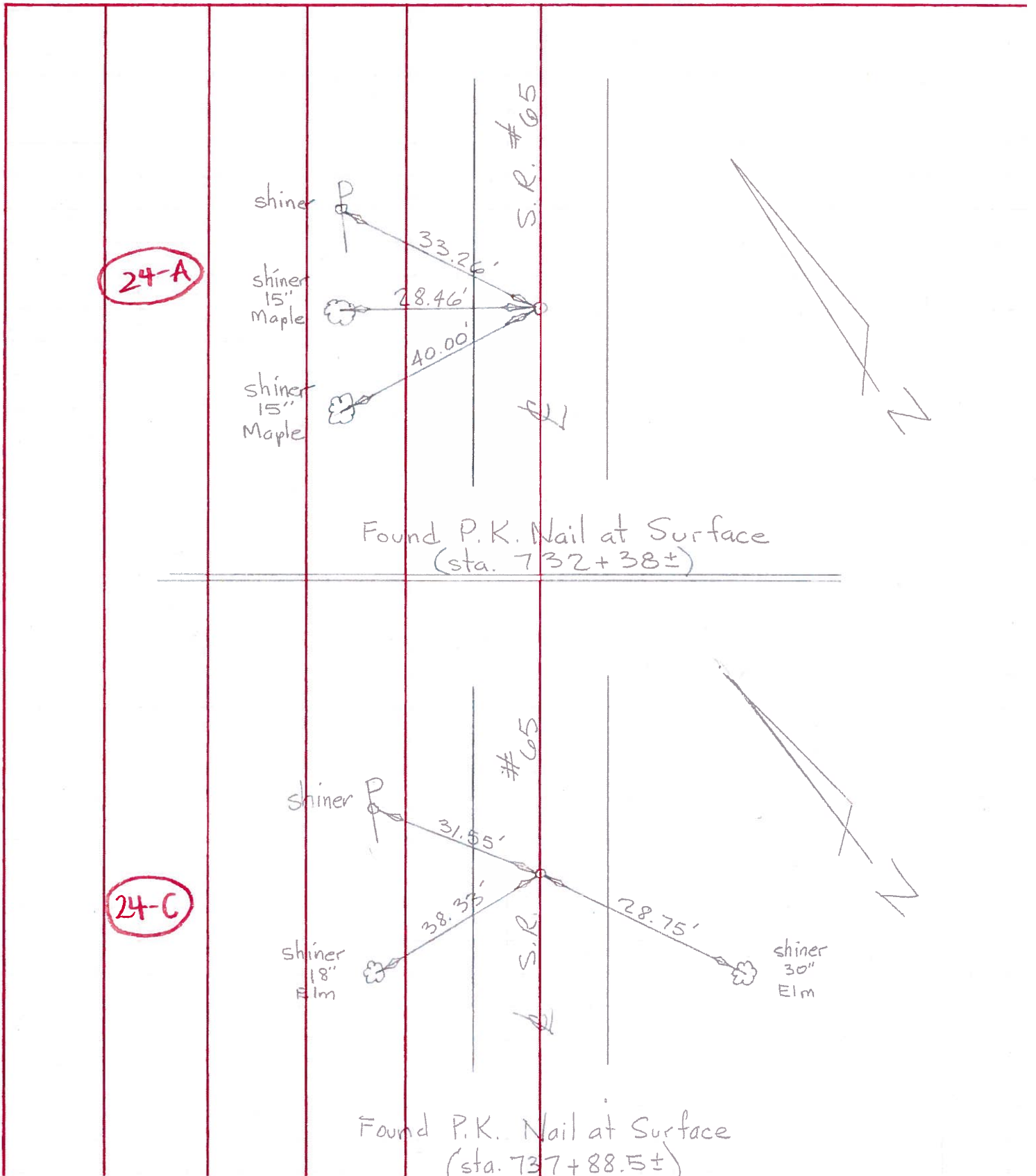


P.I.
STA. 738+90.6
FD. SMALL P.P. SPK.
@ SURFACE E' 2 1/2'
RT. OF CTR. PAVE.
Δ = LT.

BRITTANY ROAD

PERSONNEL	TITLE	PERSONNEL	TITLE	COUNTY	DATE
Tomsic		Jackson		Wood	Aug. 4, 1971
Neuser				#65	Overcast
Vanyo					
Granata					60's

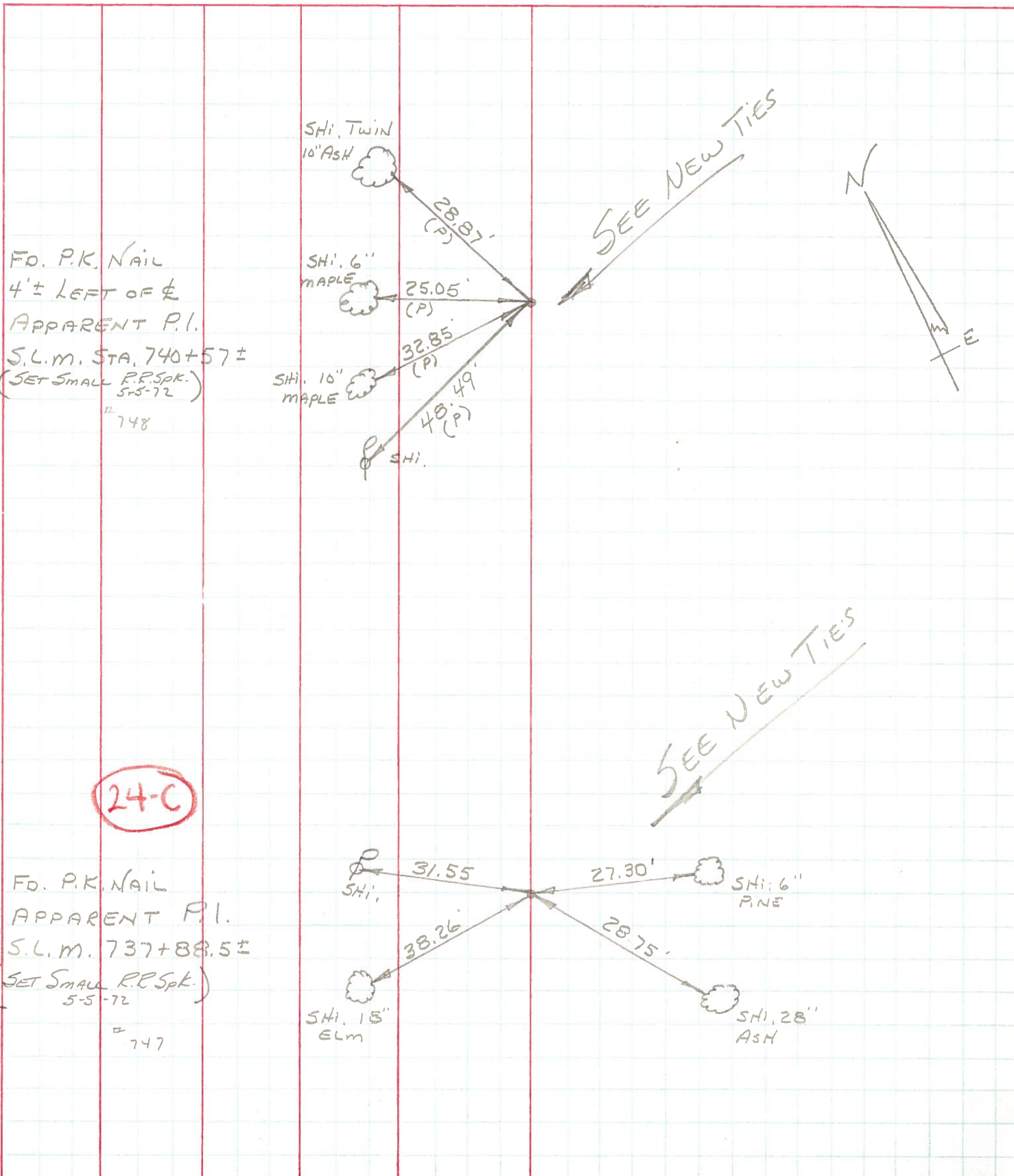
DESCRIPTION Reference Monumenting S.R. #65 JOB NO. _____



PERSONNEL TITLE PERSONNEL TITLE
 BURNSIDE _____
 SMITH _____
 BOWERS _____
 SARDEJA _____

COUNTY Wood DATE 4-29-71
 S. R. #65 WEATHER PT. CLOUDY
 SEC. PERRYBOAG TWP TEMP. +50°

DESCRIPTION POINTS FOUND BEFORE RESURFACING JOB NO. _____



10
4-19-72

10
4-19-72

24-C

SEE NEW TIES

SEE NEW TIES



PERSONNEL	TITLE	PERSONNEL	TITLE
Delventhal			
Young			

COUNTY Wood DATE 8-17-60
OK-2-23-66
 S. R. 65 WEATHER Clear
 SEC. 11.96-17.65 TEMP. 80's

DESCRIPTION CONTROL POINTS JOB NO. _____

