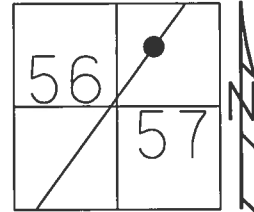


O.D.O.T. DISTRICT 2 SURVEY OFFICE (USE ONLY)

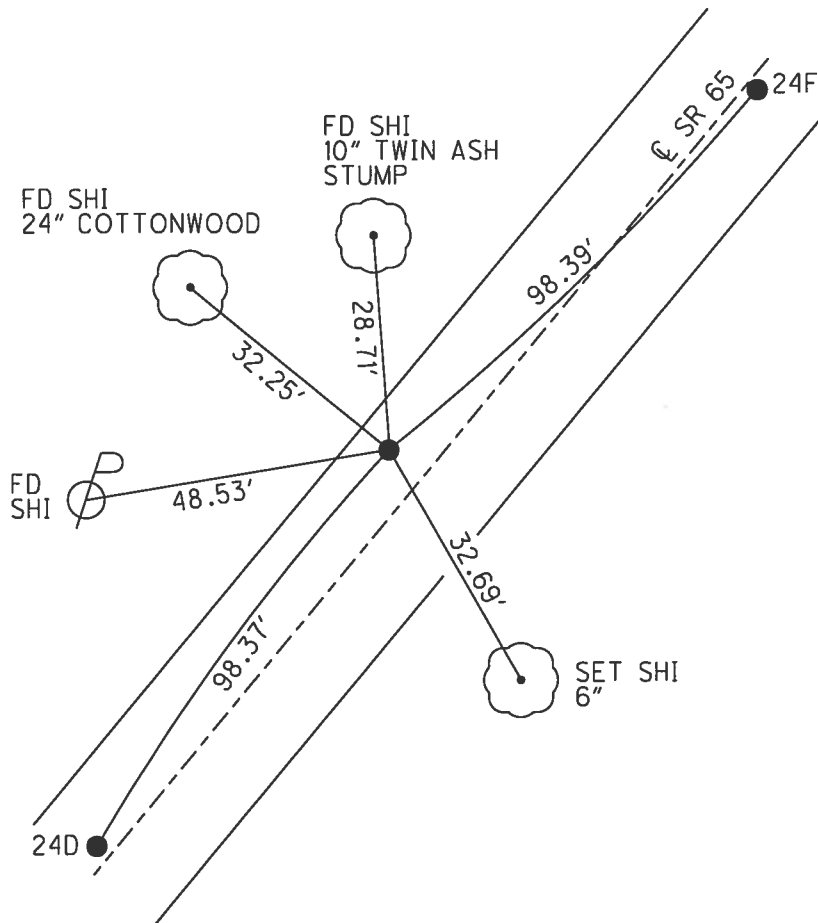
PERSONNEL _____ REFERENCE NO. 24 E SHEET 27 OF 44
 NOTES LEU DATE 6/12/14 ROUTE SR 65
 H.C. HOMAN WEATHER CLOUDY COUNTY WOOD
 R.C. WETFALL TEMP. 72° TOWNSHIP PERRYSBURG
RHOADES SECTION RT 57
 T 7 N R 10 E

TYPE MONUMENT P.K./WASHER
 ON SURFACE - ~~BELOW~~ ON _____
 LEFT - ☉ PAV'T - ~~RIGHT~~ 5.2'
4.7' TO LT EDGE PAVEMENT
 S.L.M. 742+69



Grid: Northing: 680168.914 Easting: 1640608.897

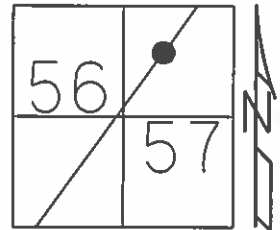
RECORD: P.I.
 $\Delta = 7^{\circ}50' 51''$ RT
 STA. 741+59.72
 FD SM.R.R.SPIKE
 4/18/84
 SET P.K./WASHER
 8/8/95, SAH
 FD P.K./WASHER
 REFE24
 9/18/12, SAH
 FD P.K.NAIL
 REFE24
 6/12/14, DCH
 SET MAG/WASHER
 3/16/16, DCH



O.D.O.T. DISTRICT 2 SURVEY OFFICE (USE ONLY)

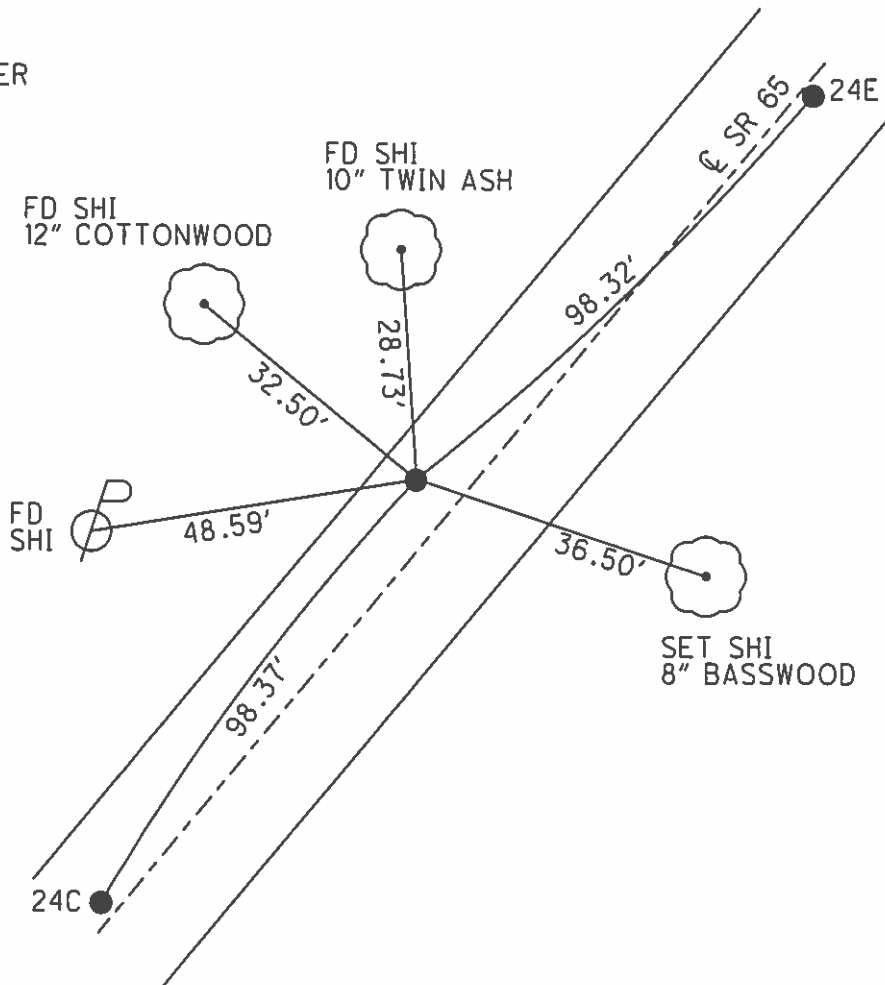
PERSONNEL _____ REFERENCE NO. 24 D SHEET 27 OF 44
 NOTES VAN DUSEN DATE 5/23/95 ROUTE SR 65
 H.C. MOSER WEATHER SUNNY COUNTY WOOD
 R.C. HUSS TEMP. 80° TOWNSHIP PERRYSBURG
 _____ CORDES SECTION RT 57
 _____ T 7 N R 10 E

TYPE MONUMENT P.K./WASHER
 ON SURFACE - ~~BELOW~~ ON _____
 LEFT - ☉ PAV'T - ~~RIGHT~~ 5.2'
4.7' TO LT EDGE PAVEMENT
 S.L.M. 742+69



RECORD: P.I.
 $\Delta = 7^\circ 50' 51''$ RT
 FD SM.R.R.SPIKE
 AT SURFACE
 4/18/84

SET P.K./WASHER
 8/8/95, SAH



O.D.O.T. DISTRICT 2 SURVEY OFFICE

PERSONNEL _____

REFERENCE NO. _____

SHEET 54 OF 91

NOTES VANASEN

H.C. MOSEK

R.C. HUSS

CORDES

DATE 5-23-95

WEATHER SUNNY

TEMP. +80°F

ROUTE SR 65

COUNTY WOOD

TOWNSHIP Perrysburg

SECTION R.T. 58 (Willowhead)

T 7 N R 10 E

TYPE MONUMENT PK/WASHER (MAG LITE'S)

ON SURFACE - BELOW

LEFT - C PAV'T. - RIGHT A=1.4LT B=5.2LT C=0.5'LT

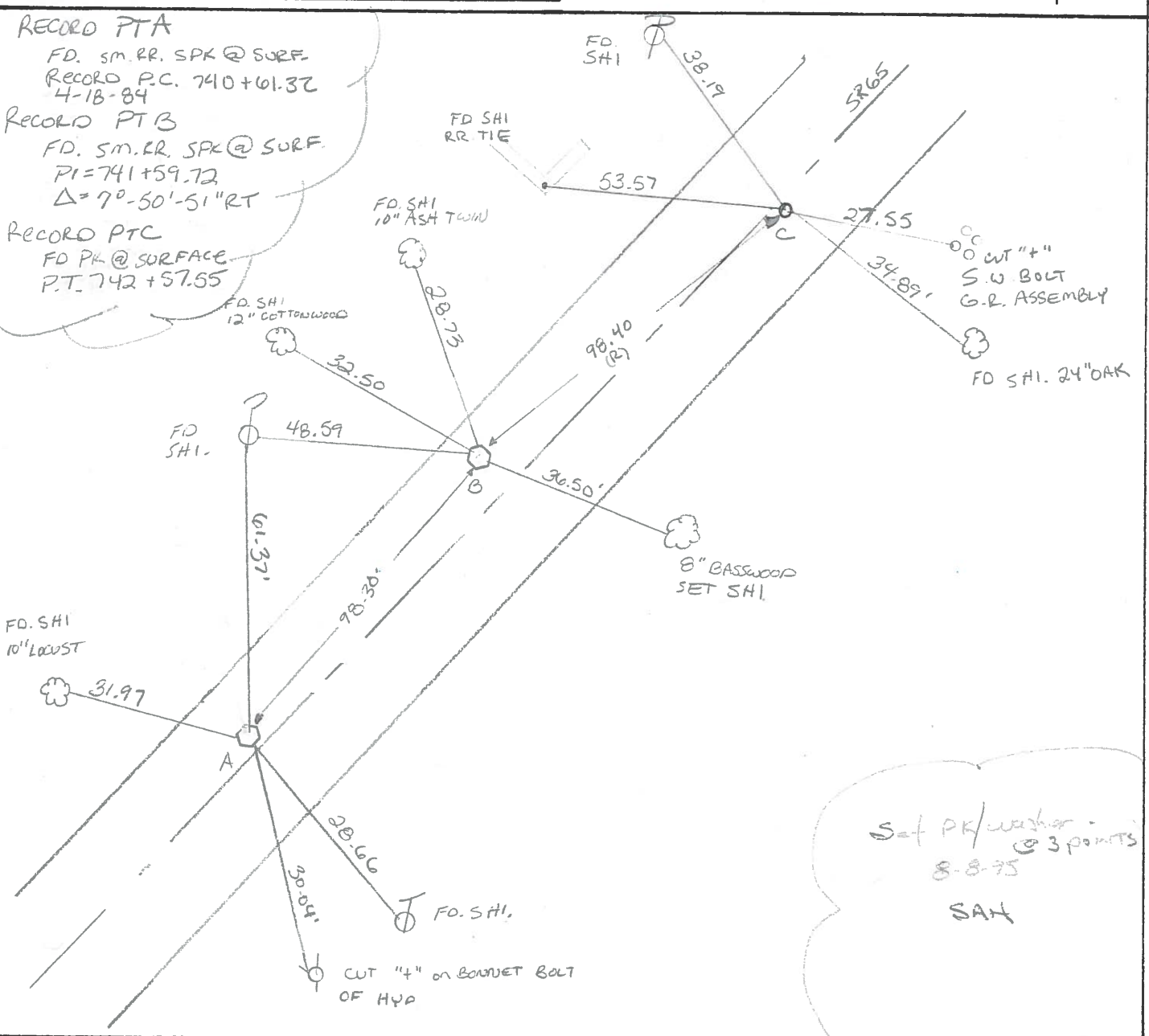
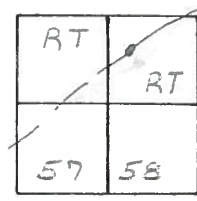
TO EDGE PAVEMENT

S.L.M. A=740+61.32 B=741+59.72 C=742+57.55

24-D

24-E

24-F



RECORD PTA
FD. SM. RR. SPK @ SURF.
RECORD P.C. 740+61.32
4-18-84

RECORD PT B
FD. SM. RR. SPK @ SURF.
PI=741+59.72
Δ=7°-50'-51" RT

RECORD PTC
FD PK @ SURFACE
P.T. 742+57.55

Set PK/washer @ 3 points
8-8-95
SAH

County Wood S.R. 65

Date 11-8-79

Township PERRYSBURG

Weather LT. RAIN

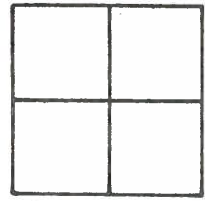
Section _____ (WILLOWBEND SUBDIVISION)

Temp. +40°

T7N, R10E

Personnel BURNSIDE
SMITH
MEAD

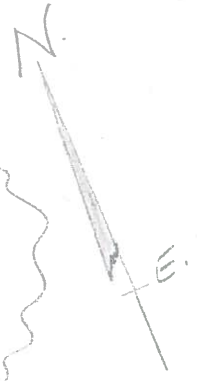
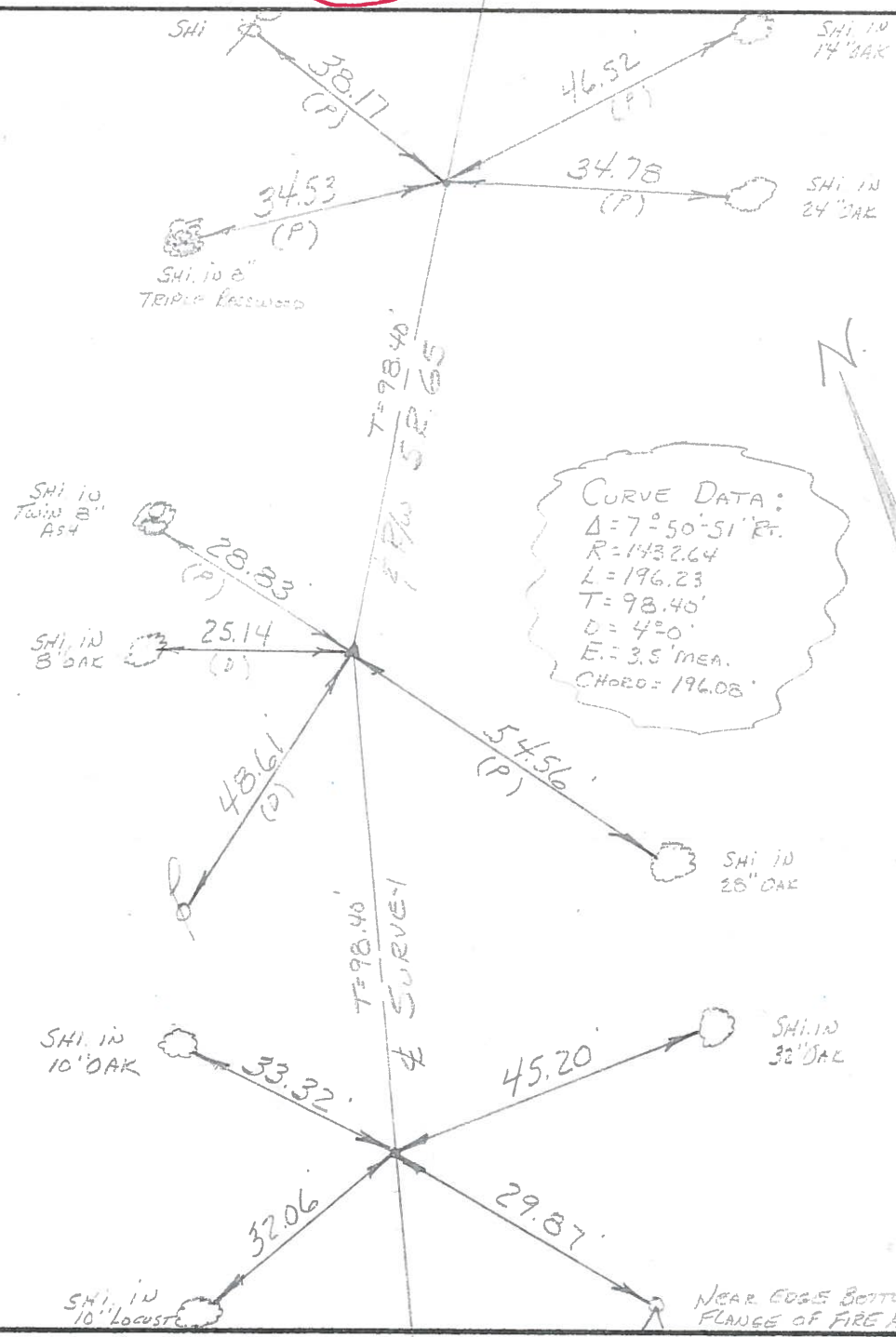
24-D
 24-E
 24-F



P.T.
 STA. 742+57.55
 FD. P.K. NAIL
 @ SURFACE

P.I.
 STA. 741+59.72
 $\Delta = 7^{\circ}50'51''$ Rt.
 FD. SMALL R.R. S.F.K.
 @ SURFACE

P.C.
 STA. 740+61.32
 FD. SMALL R.R. S.F.K.
 @ SURFACE



NEAR EDGE BOTTOM
 FLANGE OF FIRE HYD.

