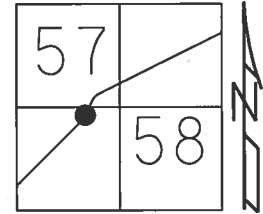


O.D.O.T. DISTRICT 2 SURVEY OFFICE (USE ONLY)

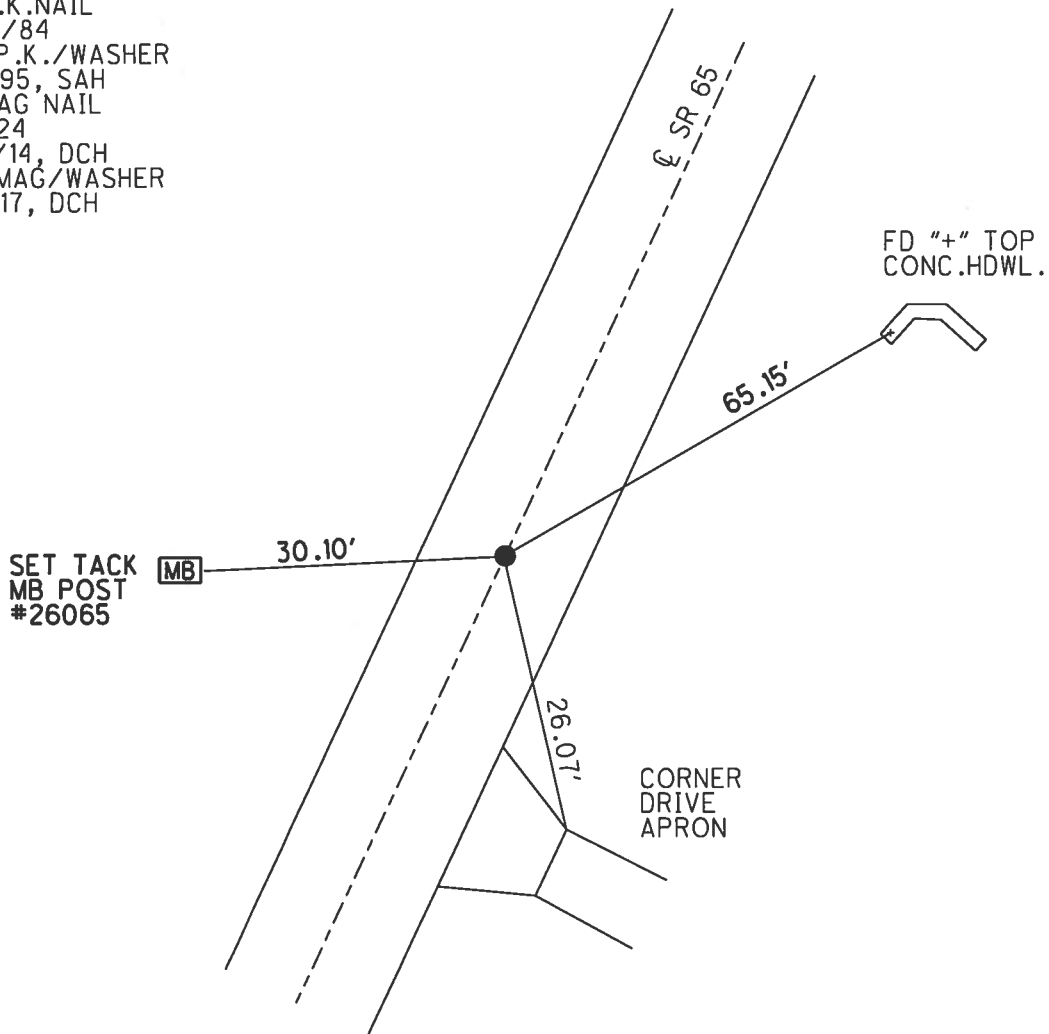
PERSONNEL \_\_\_\_\_ REFERENCE NO. 24 H SHEET 30 OF 44  
 NOTES HOMAN DATE 6/18/14 ROUTE SR 65  
 H.C. HOMAN WEATHER CLOUDY COUNTY WOOD  
 R.C. THOMAS TEMP. 85° TOWNSHIP PERRYSBURG  
 SECTION RT 57  
 T 7 N R 10 E

TYPE MONUMENT MAG NAIL  
 ON SURFACE - ~~BELOW~~ ON  
 LEFT - Q PAV'T - RIGHT ON  
9.8' TO RT EDGE PAVEMENT  
 S.L.M. 753+65.94



Grid: Northing: 681072.079 Easting: 1641222.308

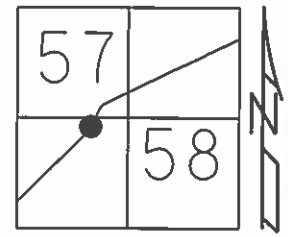
RECORD:  
 FD P.K.NAIL  
 10/19/84  
 SET P.K./WASHER  
 8/8/95, SAH  
 FD MAG NAIL  
 REFH24  
 6/18/14, DCH  
 SET MAG/WASHER  
 6/2/17, DCH



O.D.O.T. DISTRICT 2 SURVEY OFFICE (USE ONLY)

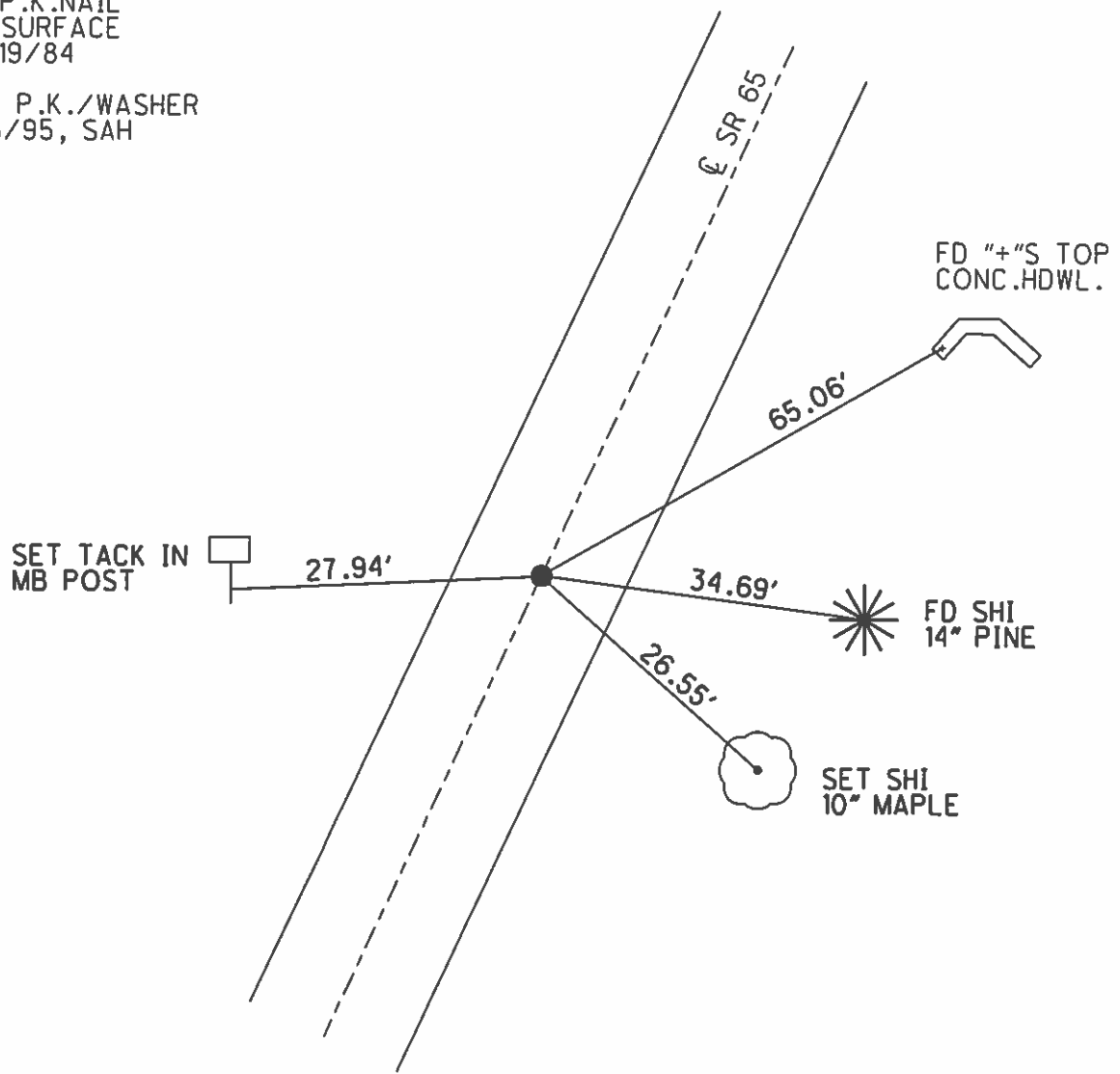
PERSONNEL \_\_\_\_\_ REFERENCE NO. 24 G SHEET 30 OF 44  
 NOTES VAN DUSEN DATE 5/23/95 ROUTE SR 65  
 H.C. MOSE WEATHER SUNNY COUNTY WOOD  
 R.C. HUSS TEMP. 80° TOWNSHIP PERRYSBURG  
CORDES SECTION RT 57  
 T 7 N R 10 E

TYPE MONUMENT P.K./WASHER  
 ON SURFACE - ~~BELOW~~ ON \_\_\_\_\_  
 LEFT - ☉ PAV'T - RIGHT ON \_\_\_\_\_  
9.8' TO RT EDGE PAVEMENT  
 S.L.M. 753+65.94  
 Grid: Northing: 681072.079 Easting: 1641222.308



RECORD:  
 FD P.K.NAIL  
 AT SURFACE  
 10/19/84

SET P.K./WASHER  
 8/8/95, SAH



# O.D.O.T. DISTRICT 2 SURVEY OFFICE

PERSONNEL \_\_\_\_\_

REFERENCE NO. \_\_\_\_\_

SHEET 56 OF 91

NOTES VAN DOSEN

H.C. MOSEK

DATE 5-23-95

ROUTE SR65

R.C. HUSS

WEATHER SUNNY

COUNTY Wood

COPDES

TEMP. +80°F

TOWNSHIP Perrytown

SECTION RT. 58 (w. 115' board Sub-division)

T 7 N R 10 E

TYPE MONUMENT PK/WASHER MAGLITE

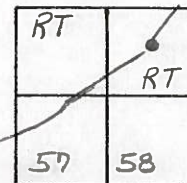
ON SURFACE - ~~BELOW~~ \_\_\_\_\_

~~LEFT~~ - Q PAV'T. - ~~RIGHT~~ \_\_\_\_\_

9.8 TO RT EDGE PAVEMENT

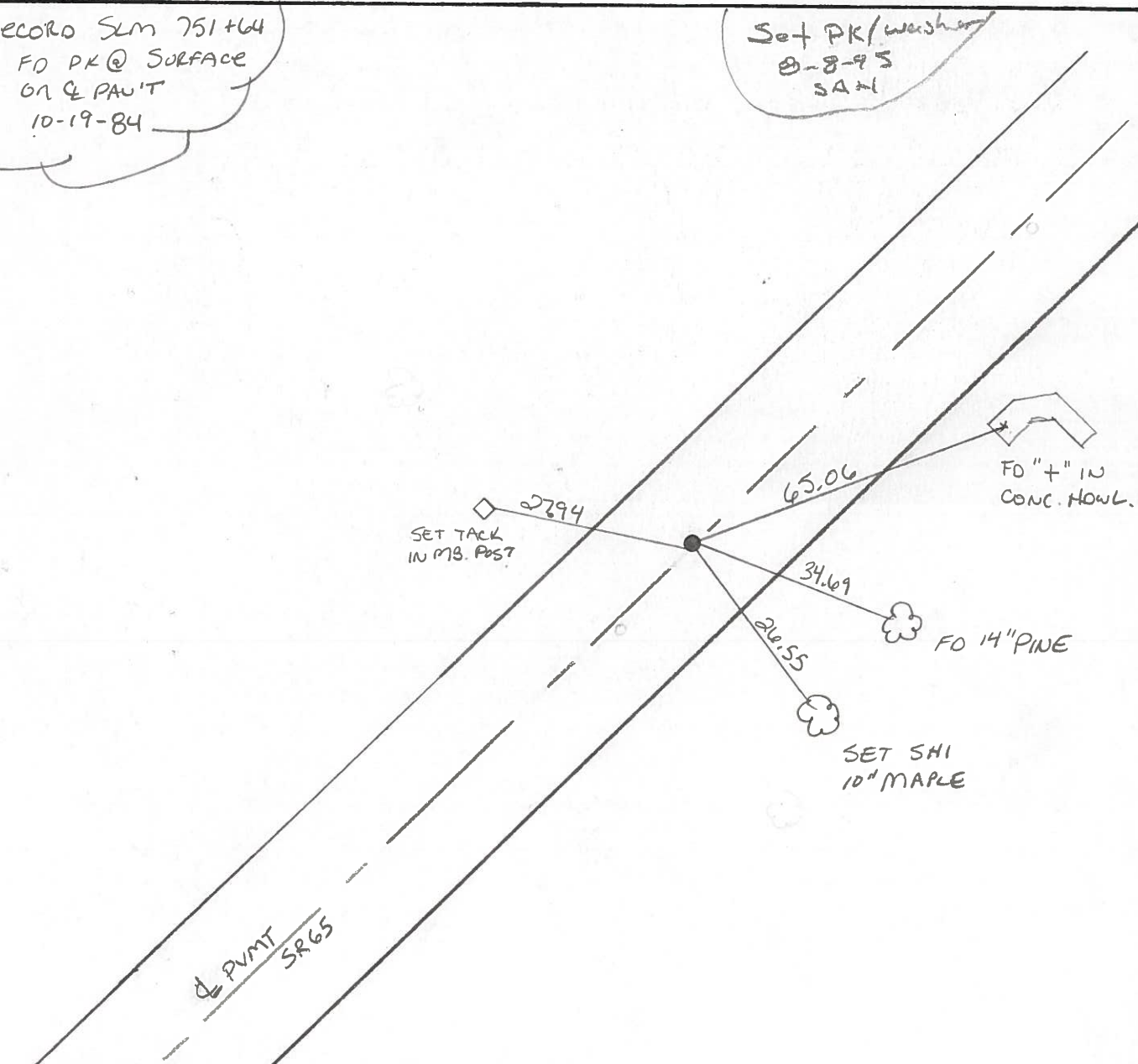
S.L.M. 751+64

24-11



RECORD SLM 751+64  
FO PK @ SURFACE  
ON Q PAV'T  
10-19-84

Set PK/washer  
8-8-95  
SAH



FO "+" IN CONC. HOWL.

FO 14" PINE

SET SHI 10" MAPLE

County Wood S.R. 65

Date 4-18-84

Township PERRYSBURG

Weather Cloudy

Section R.T. 58 (Willow Bend Sub.)

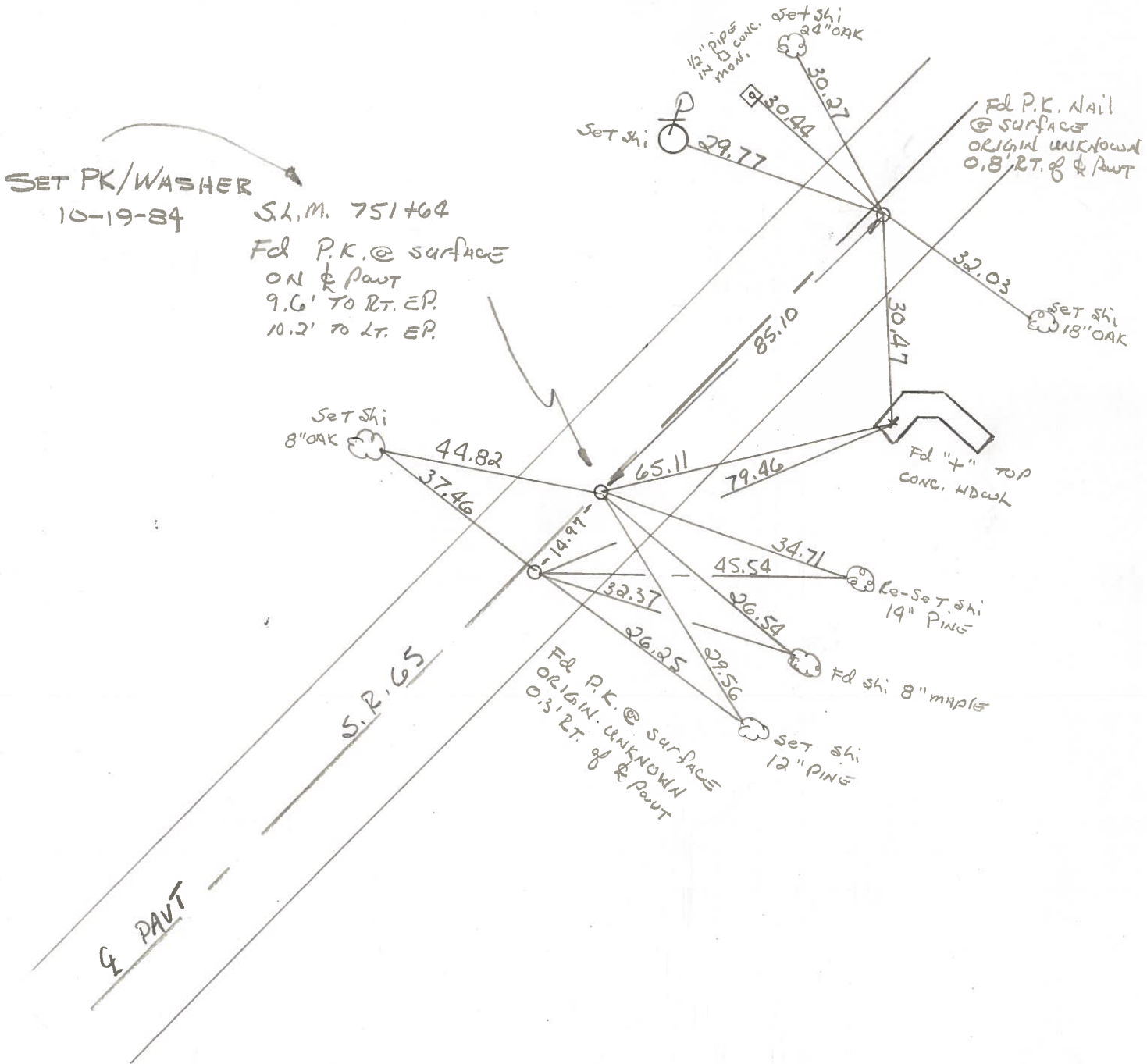
Temp. 40°

TZN, R/OE

Personnel HOFFMAN  
HOUSEHOLDER H.C.  
BARNHISEL R.C.

24-H

RT.	RT.
57	58



County WOOD S.R. 65

Date 7-24-80

Township PERRYSBURG

Weather HAZY

Section \_\_\_\_\_

Temp. 86°

T\_N, R\_E

Personnel SMITH

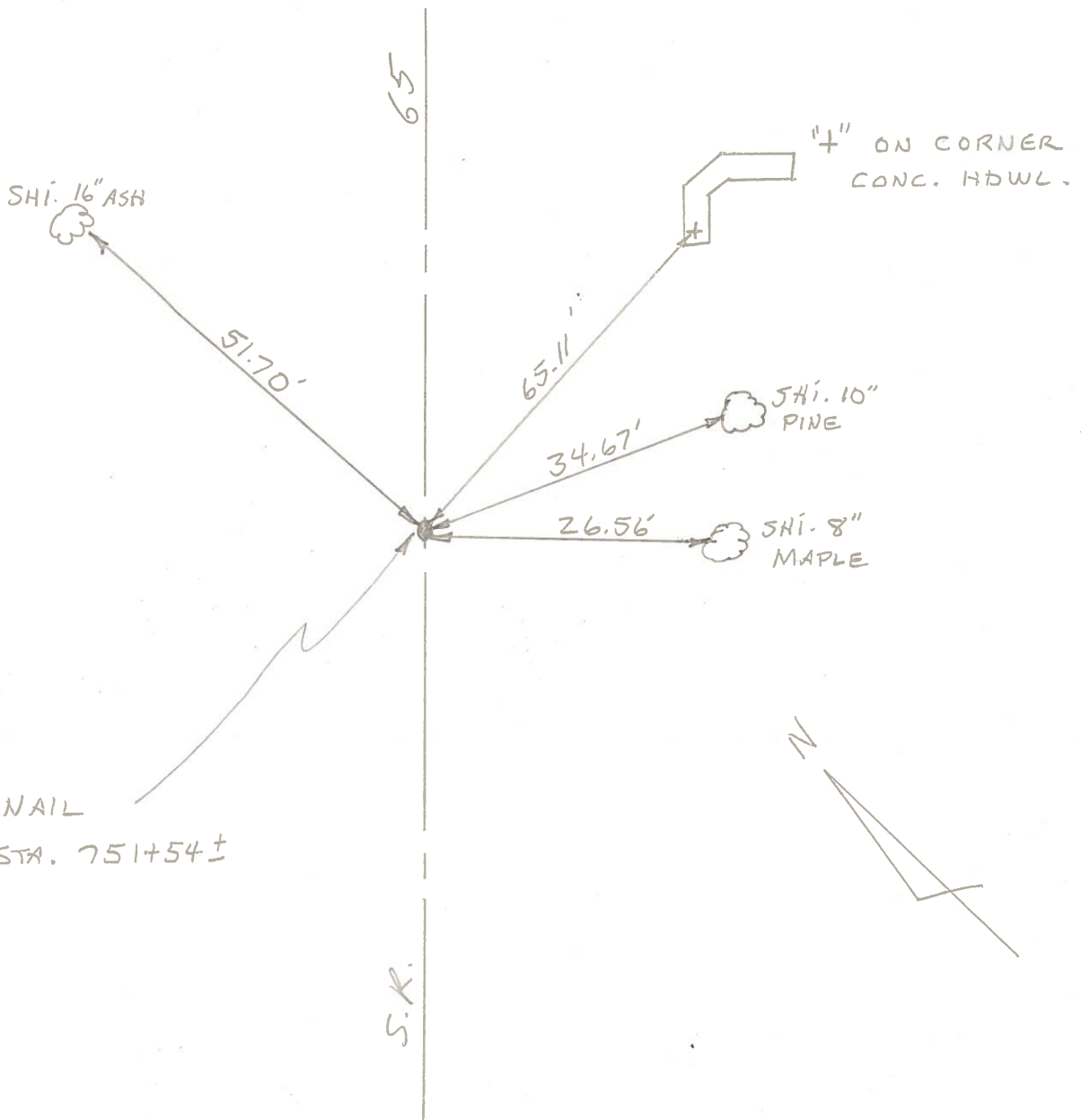
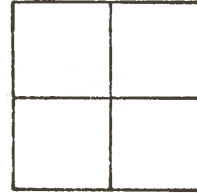
BOWERS

\_\_\_\_\_

\_\_\_\_\_

\_\_\_\_\_

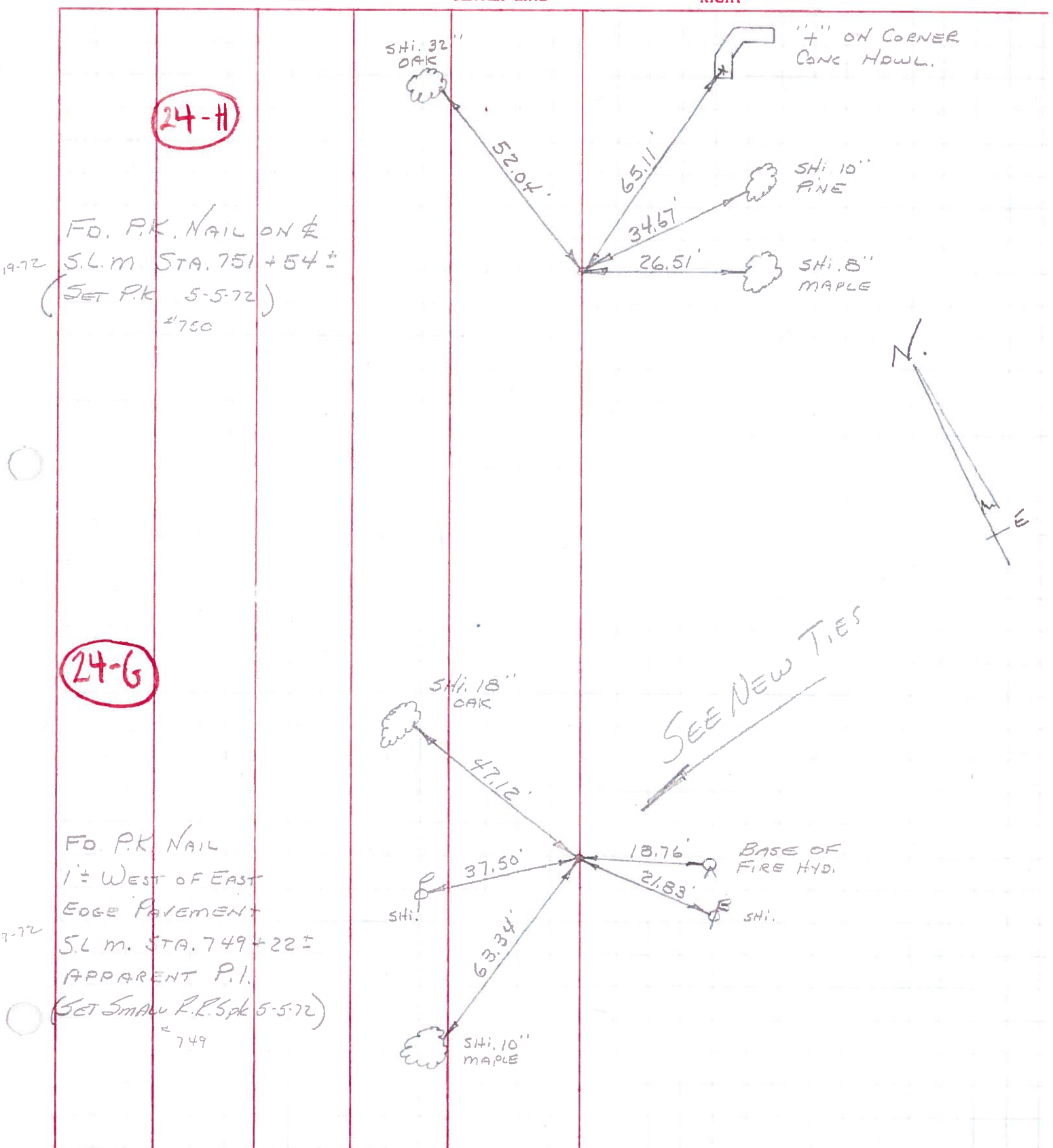
24-H



PERSONNEL	TITLE	PERSONNEL	TITLE
<u>BURNSIDE</u>			
<u>SMITH</u>			
<u>BOWERS</u>			
<u>SARDEJA</u>	<u>E.I.T.</u>		

COUNTY WOOD DATE 4-29-71  
 S. R. #65 WEATHER CLEAR  
 SEC. PERRYSBURG TWP TEMP. +50°

DESCRIPTION POINTS FOUND BEFORE RESURFACING JOB NO. \_\_\_\_\_



19-72  
 FD. P.K. NAIL ON E  
 S.L.M. STA. 751 + 54 ±  
 (SET P.K. 5-5-72)  
 #750

7-72  
 FD. P.K. NAIL  
 1 ± WEST OF EAST  
 EDGE PAVEMENT  
 S.L.M. STA. 749 + 22 ±  
 APPARENT P.I.  
 (SET SMALL R.R. S.P.K. 5-5-72)  
 #749

PERSONNEL	TITLE	PERSONNEL	TITLE
Delventhal			
Young			

COUNTY Wood DATE 8-17-60  
~~OK-2-23-66~~  
 S. R. 65 WEATHER Clear  
 SEC. 11.96-17.65 TEMP. 80's

DESCRIPTION CONTROL POINTS JOB NO. \_\_\_\_\_

