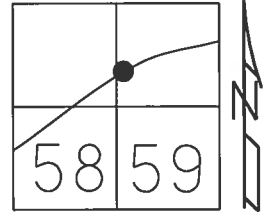


O.D.O.T. DISTRICT 2 SURVEY OFFICE (USE ONLY)

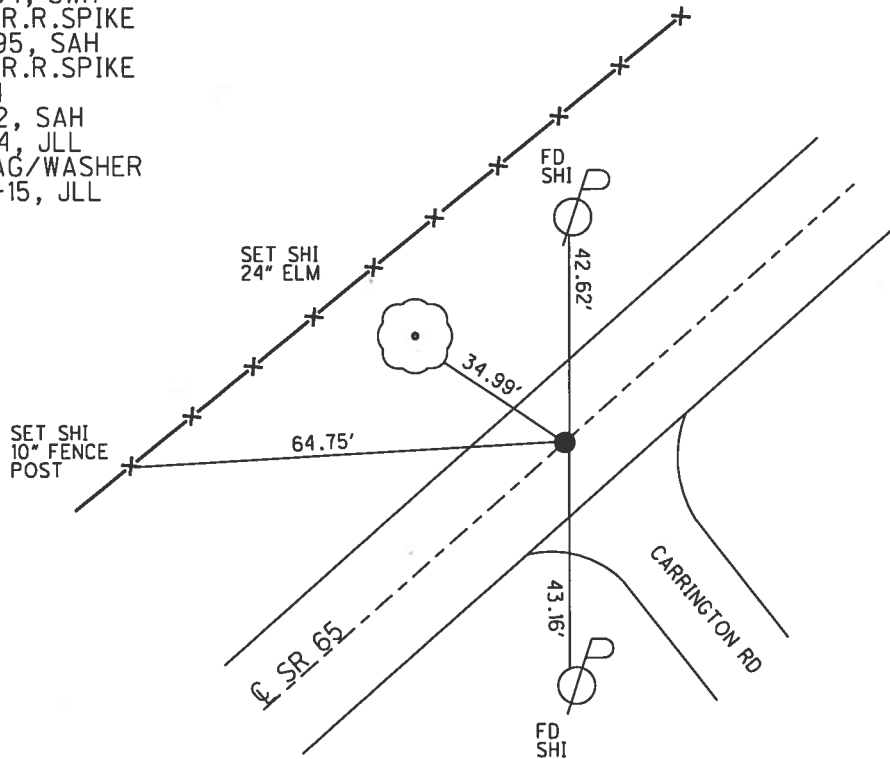
PERSONNEL \_\_\_\_\_ REFERENCE NO. 24 S SHEET 36 OF 44

NOTES HOMAN DATE 6-23-14 ROUTE SR 65  
 H.C. LEU WEATHER SUNNY COUNTY WOOD  
 R.C. THOMAS TEMP. 80°F TOWNSHIP PERRYSBURG  
 \_\_\_\_\_ SECTION RT 59  
 \_\_\_\_\_ T 7 N R 10 E

TYPE MONUMENT PK/WASHER  
 ON SURFACE - ~~BELOW~~ ON  
 LEFT - ☉ PAV'T - RIGHT ON  
17.2' TO LT EDGE PAVEMENT  
 S.L.M. 788+28.91  
 Grid: Northing: 683878.076 Easting: 1643161.760



RECORD:  
 STA. 786+25  
 FD SM.R.R.SPIKE  
 1984  
 SET PK/WASHER  
 10-19-84, SWH  
 FD SM.R.R.SPIKE  
 5/23/95, SAH  
 FD SM.R.R.SPIKE  
 REFS24  
 9/21/12, SAH  
 6-23-14, JLL  
 SET MAG/WASHER  
 08-03-15, JLL



# O.D.O.T. DISTRICT 2 SURVEY OFFICE

PERSONNEL \_\_\_\_\_

REFERENCE NO. \_\_\_\_\_

SHEET 64 OF 91

NOTES YANOUSEN

H.C. MOSEK

R.C. CORDES

HUSS

DATE 5-23-95

WEATHER SUNNY

TEMP. +80°F

ROUTE SR-65

COUNTY Wood

TOWNSHIP Pennsбург

SECTION RT 59

T 7 N R 10 E

TYPE MONUMENT PK/WASHER

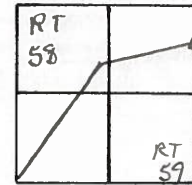
ON SURFACE - ~~BELOW~~

~~LEFT - & PAV'T. - RIGHT~~

17.2 TO LT EDGE PAVEMENT

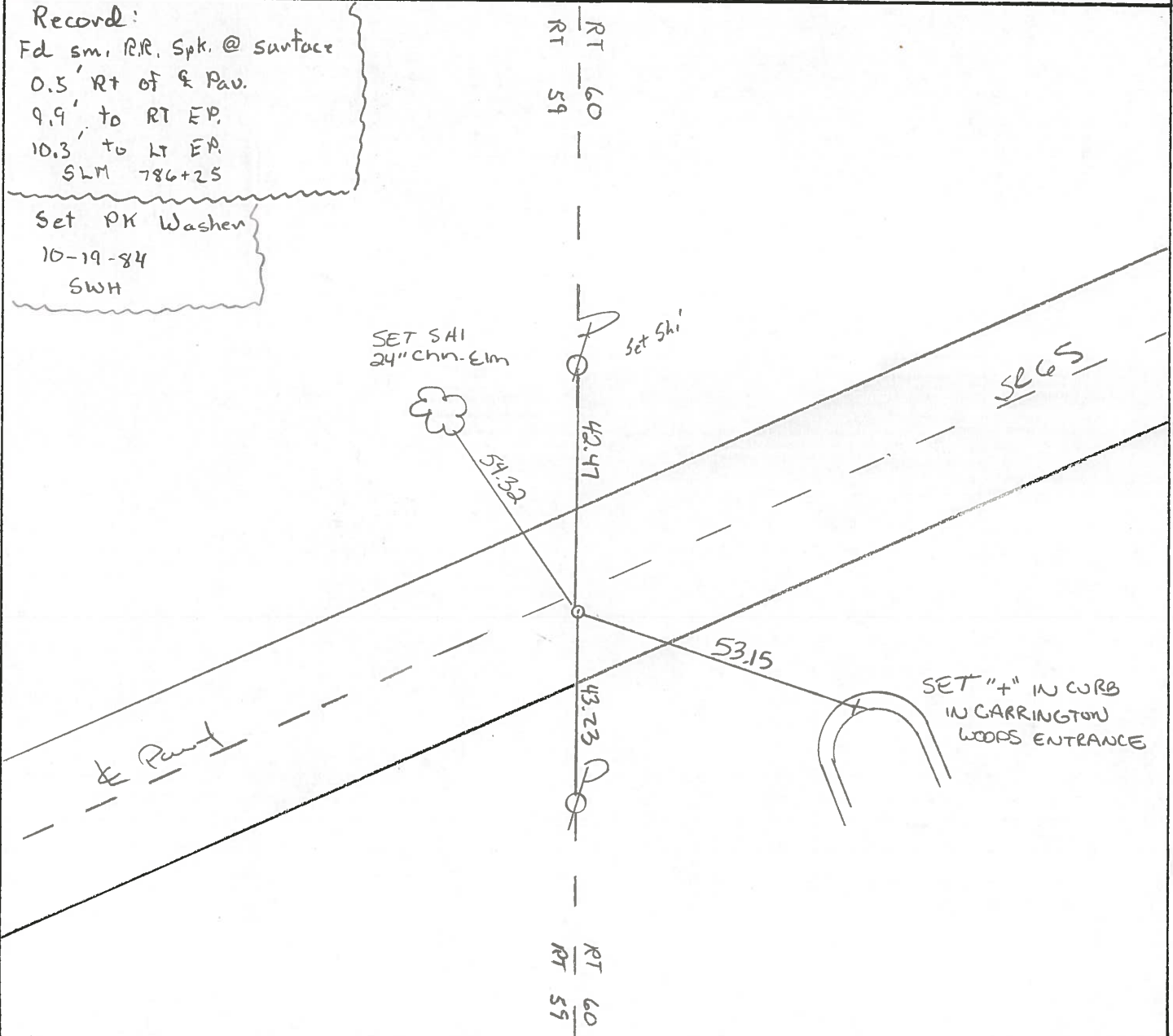
S.L.M. 786+25

24-5



Record:  
 Fd sm. RR. Spk. @ surface  
 0.5' Rt of & Pav.  
 9.9' to RT EP.  
 10.3' to LT EP.  
 SLM 786+25

Set PK Washer  
 10-19-84  
 SWH



County WOOD S.R. 65

Date 5-9-84

Township PERRYSBURG

Weather OVERCAST

Section RIVER TRACT 59

Temp. 40°

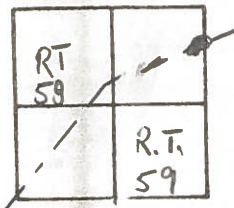
TZN, R/OE

Personnel HOFFMAN

HOUSEHOLDER H.C.

BARWISSEL R.C.

24-S



SLM 786+25

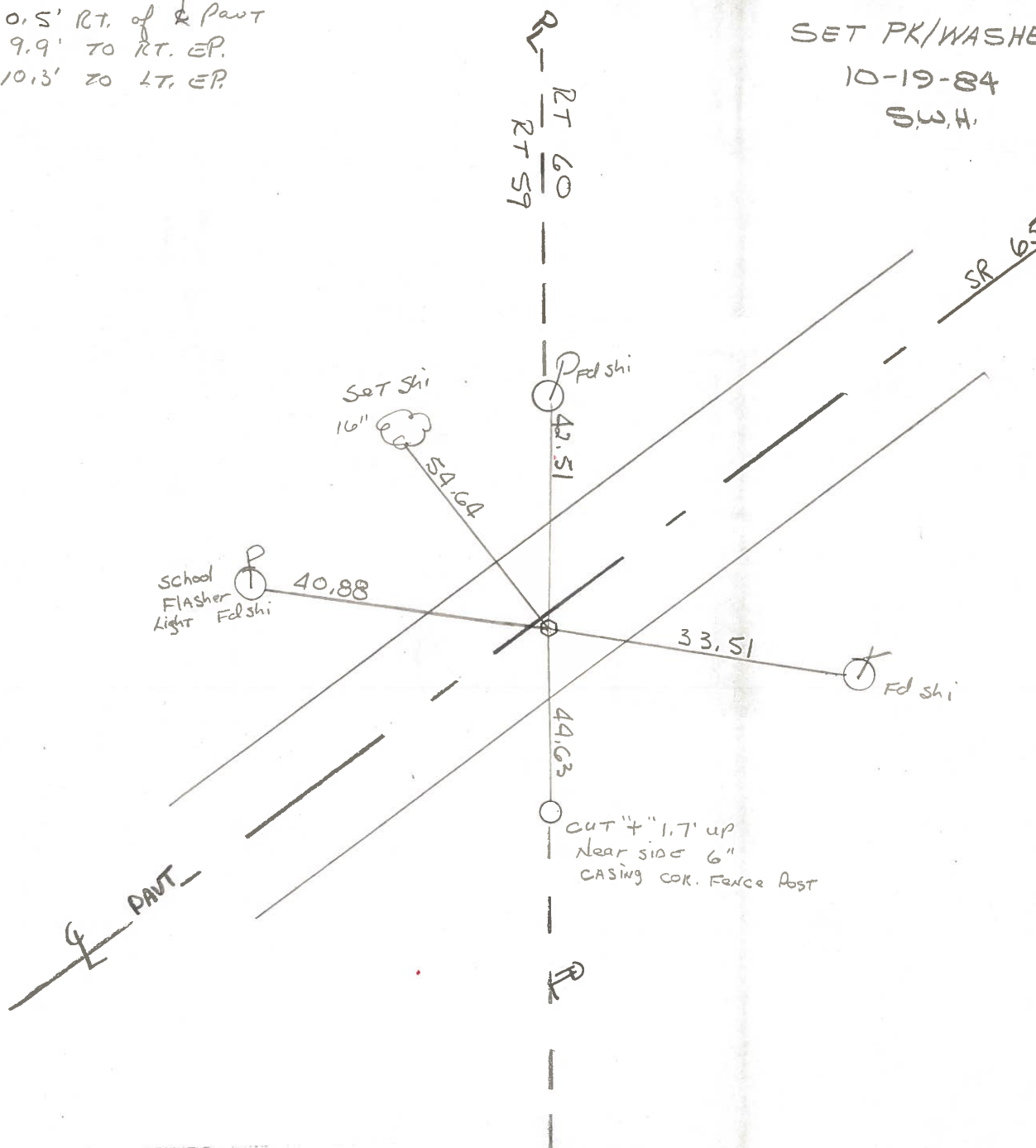
SET PK/WASHER  
10-19-84  
S.W.H.

Fd small RR spk @ surface

0.5' RT. of & Pant

9.9' TO RT. EP.

10.3' TO LT. EP.



County WOOD S.R. 65

Date 7-24-80

Township PERRYSBURG

Weather \_\_\_\_\_

Section \_\_\_\_\_

Temp. \_\_\_\_\_

T N, R E

Personnel SMITH

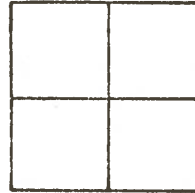
BOWERS

\_\_\_\_\_

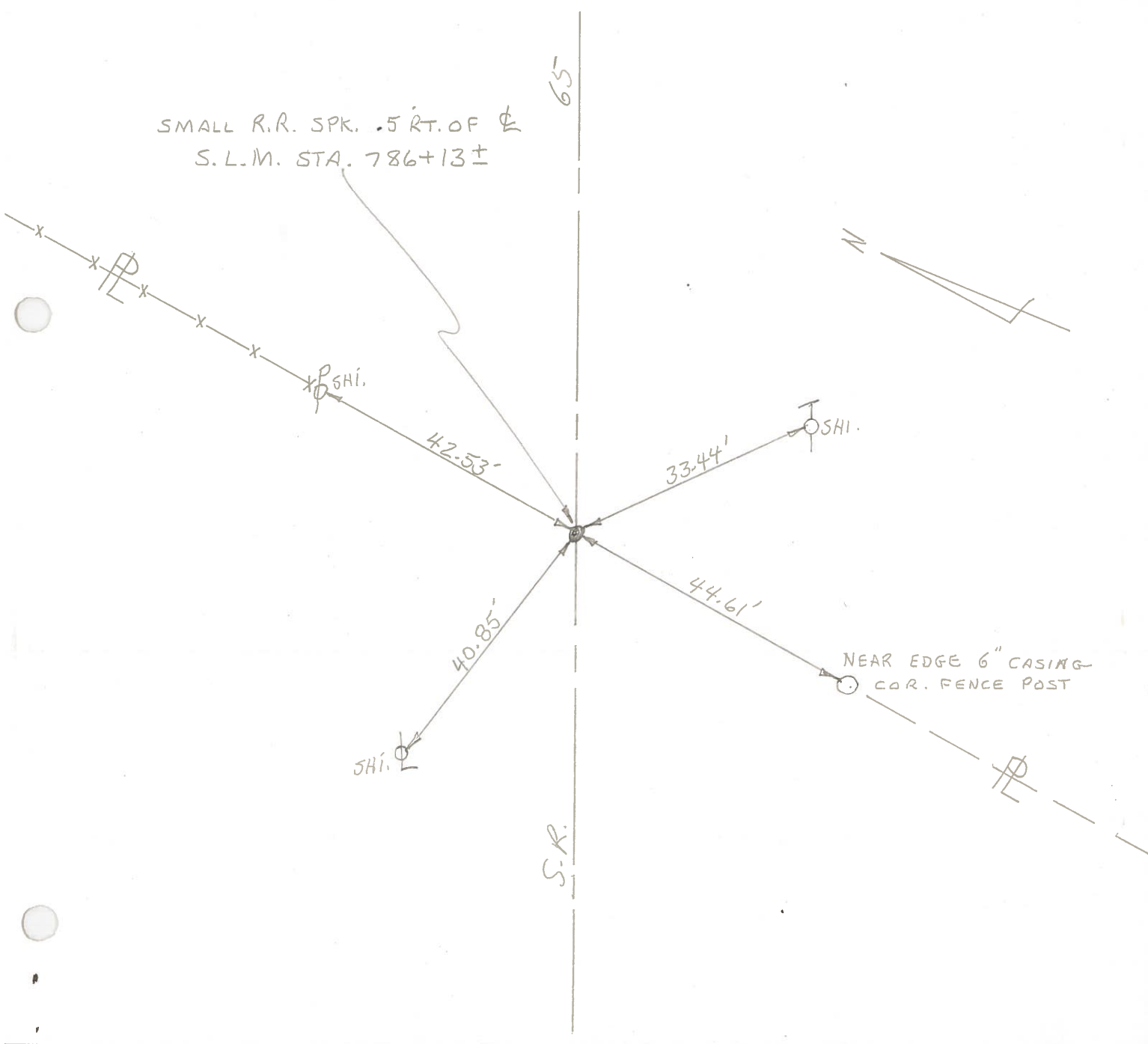
\_\_\_\_\_

\_\_\_\_\_

24-S



SMALL R.R. SPK. .5 RT. OF  $\Phi$   
S.L.M. STA. 786+13±



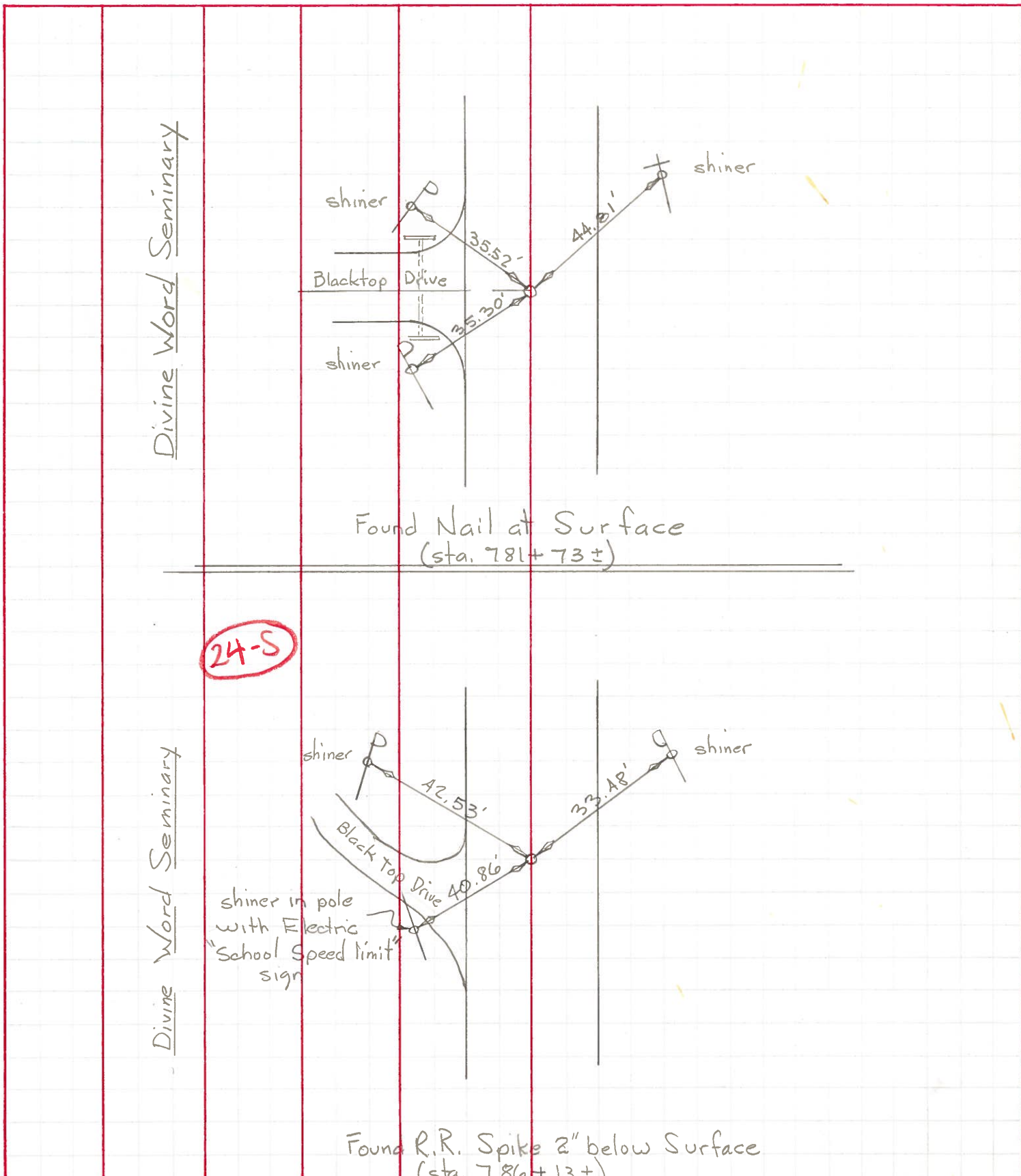
PERSONNEL	TITLE	PERSONNEL	TITLE
Tomic		Jackson	
Neuser			
Janyz			
Granata			

COUNTY Wood DATE Aug. 4, 1971

S. R. #65 WEATHER Cloudy

SEC. \_\_\_\_\_ TEMP. 70<sup>o</sup>is

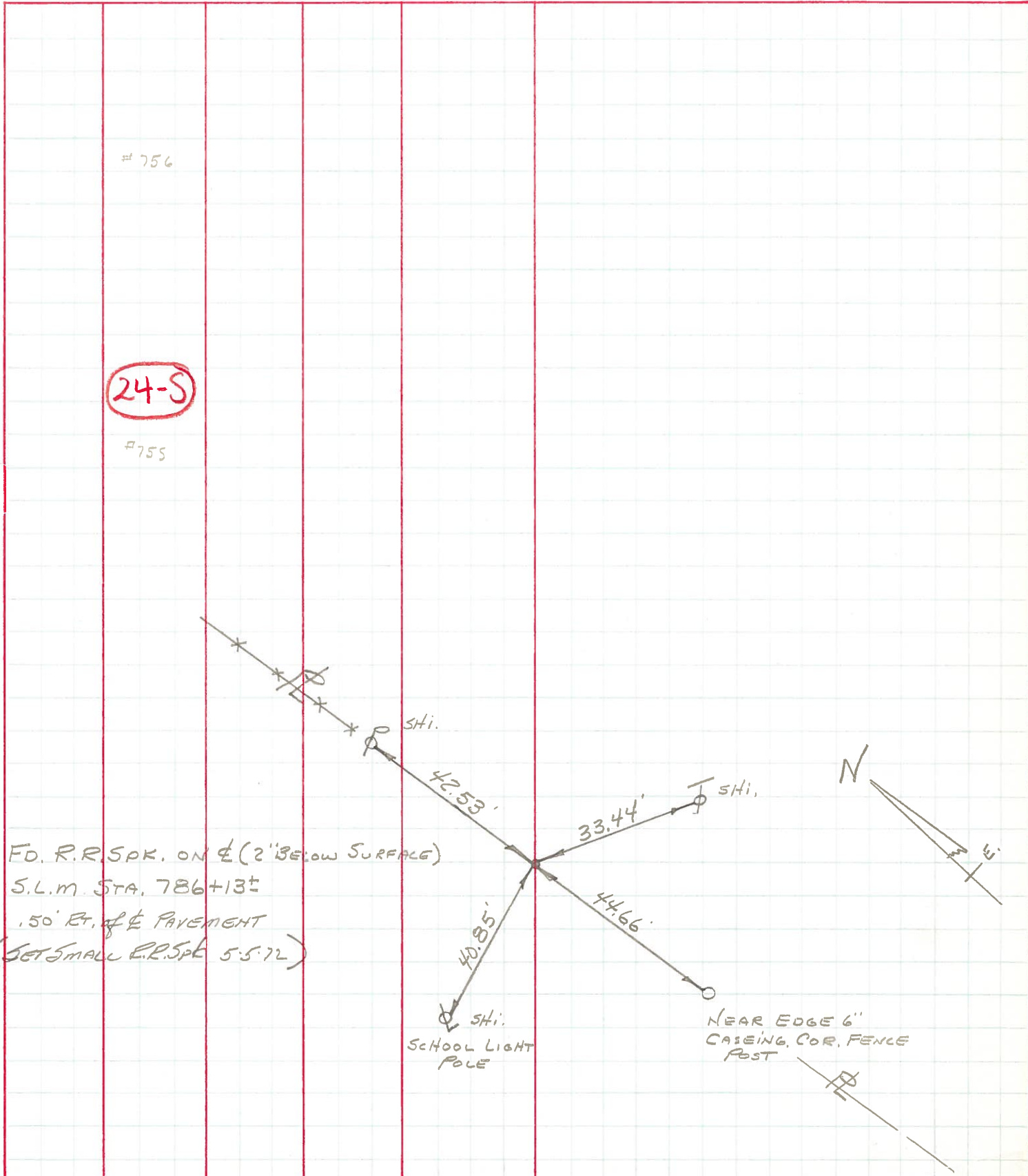
DESCRIPTION Reference Mon. S.R.#65 JOB NO. \_\_\_\_\_



PERSONNEL	TITLE	PERSONNEL	TITLE
BURNSIDE			
SMITH			
BOWERS			
SARDEJA	E.I.T.		

COUNTY WOOD DATE 4-29-71  
 S. R. #65 WEATHER PT. CLOUDY  
 SEC. PERRYSBURG TWP TEMP. +52

DESCRIPTION CONTROL POINTS JOB NO. \_\_\_\_\_



24-S

# 756

# 755

SHI.

42.53'

33.44'

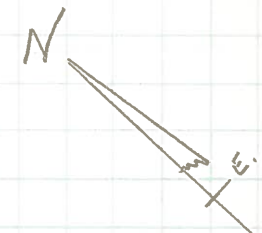
SHI.

40.85'

44.66'

SHI.  
SCHOOL LIGHT  
POLE

NEAR EDGE 6"  
CASEING, COR. FENCE  
POST



FD. R.R. SPK. ON E (2' BELOW SURFACE)  
 S.L.M. STA. 786+13±  
 .50' RT. OF E PAVEMENT  
 (SET SMALL R.R. SPK 5.5.72)

E  
-19-72