

O.D.O.T. DISTRICT 2 SURVEY OFFICE (USE ONLY)

PERSONNEL _____ REFERENCE NO. 26 A SHEET 1 OF 25

NOTES BARNHESEL DATE 5/19/95 ROUTE SR 65
 H.C. CORDES WEATHER SUNNY COUNTY WOOD
 R.C. BARNHESEL TEMP. 78° TOWNSHIP PERRYSBURG
 _____ SECTION RT 62
 _____ T 7 N R 10 E

TYPE MONUMENT P.K./WASHER

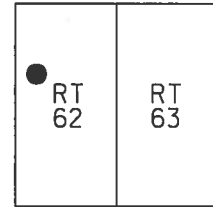
ON SURFACE - ~~BELOW~~ ON _____

~~LEFT~~ - ℄ PAV'T - RIGHT 6.7'

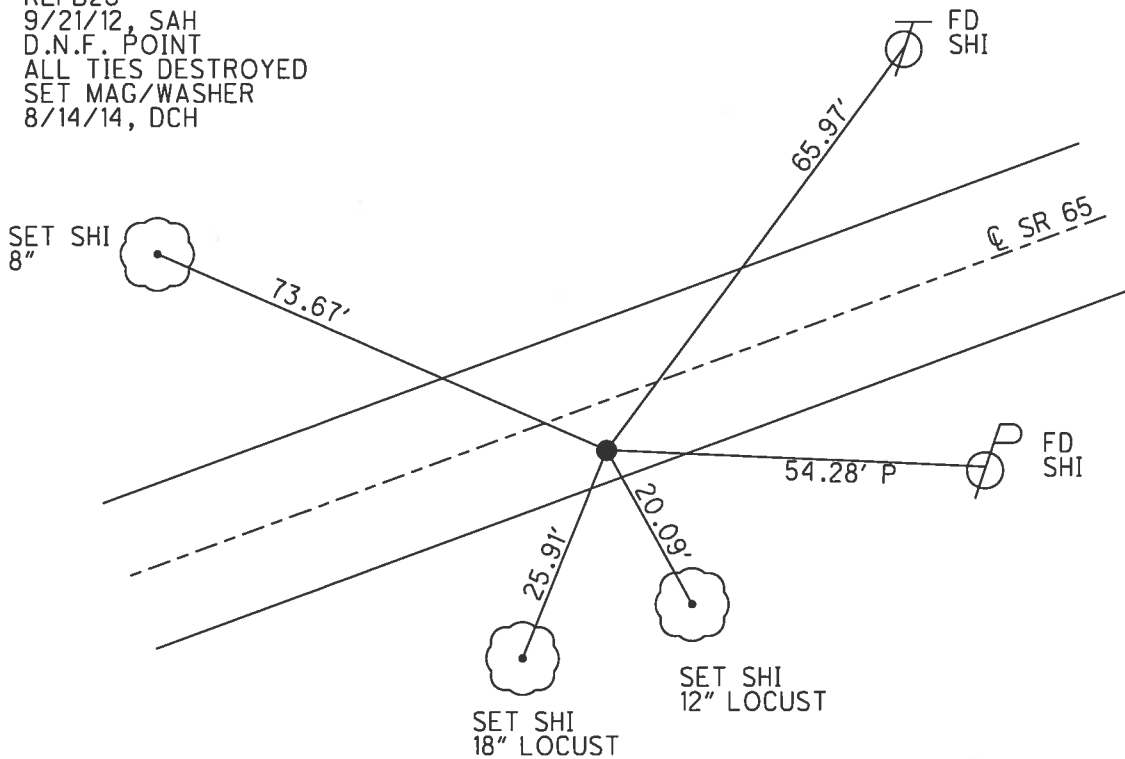
2.9' TO RT EDGE PAVEMENT

S.L.M. 834+39.41

Grid: Northing: 685717.762 Easting: 1647287.211



RECORD: P.I.
 STA. 831+92.47
 $\Delta = 8^\circ 18' 40''$ LT
 FD P.K.NAIL
 FD P.K./WASHER
 5/19/95, MB
 SET P.K./WASHER
 8/8/95, SAH
 FD P.K.NAIL
 REFB26
 9/21/12, SAH
 D.N.F. POINT
 ALL TIES DESTROYED
 SET MAG/WASHER
 8/14/14, DCH



O.D.O.T. DISTRICT 2 SURVEY OFFICE

PERSONNEL _____

REFERENCE NO. 26-A

SHEET 72 OF 91

NOTES BARNHSEL

H.C. CORDES

R.C. BARNHSEL

DATE 5-19-95

WEATHER Sunny

TEMP. +78°F

ROUTE SR-65

COUNTY Wood

TOWNSHIP Perrysburg

SECTION RT-62

T 7 N R 10 E

TYPE MONUMENT PK/WASHER

ON SURFACE - ~~BELOW~~

~~LEFT - C PAV'T.~~ - RIGHT 6.7 RT

2.9 TO RT EDGE PAVEMENT

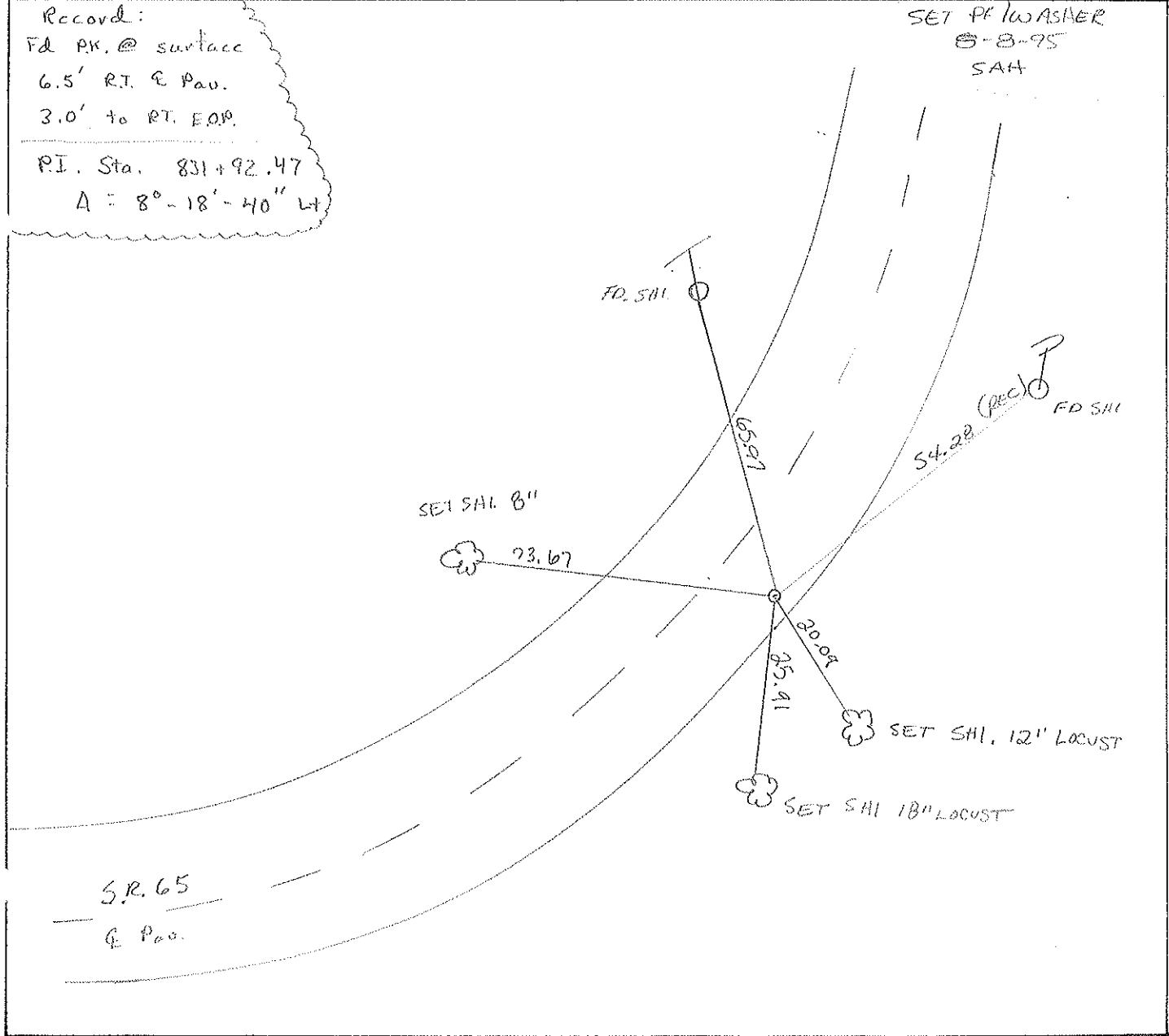
S.L.M. 832 +35

RT 62	RT 63



SET PK/WASHER
8-8-95
SAH

Record:
Fd PK. @ surface
6.5' RT. & Pav.
3.0' to RT. EOP.
P.I. Sta. 831+92.47
A = 8°-18'-40" L



County WOOD S.R. 65

Date 5-10-84

Township PERRYSBURG

Weather CLEAR

Section RT 62

Temp. 50°

TZN, R/OE

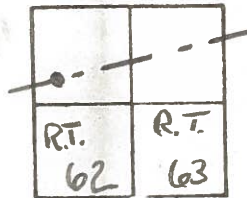
Personnel HOFFMAN

LOEHKE

HOUSEHOLDER H.C.

BARWISER P.C.

26-A



#26-A

SLM = 832 + 35

Fd P.K. @ surface

RT. of Φ PAWT 6.5

3.0' TO RT. EP.

16.1' TO LT. EP.

SET PK/WASHER

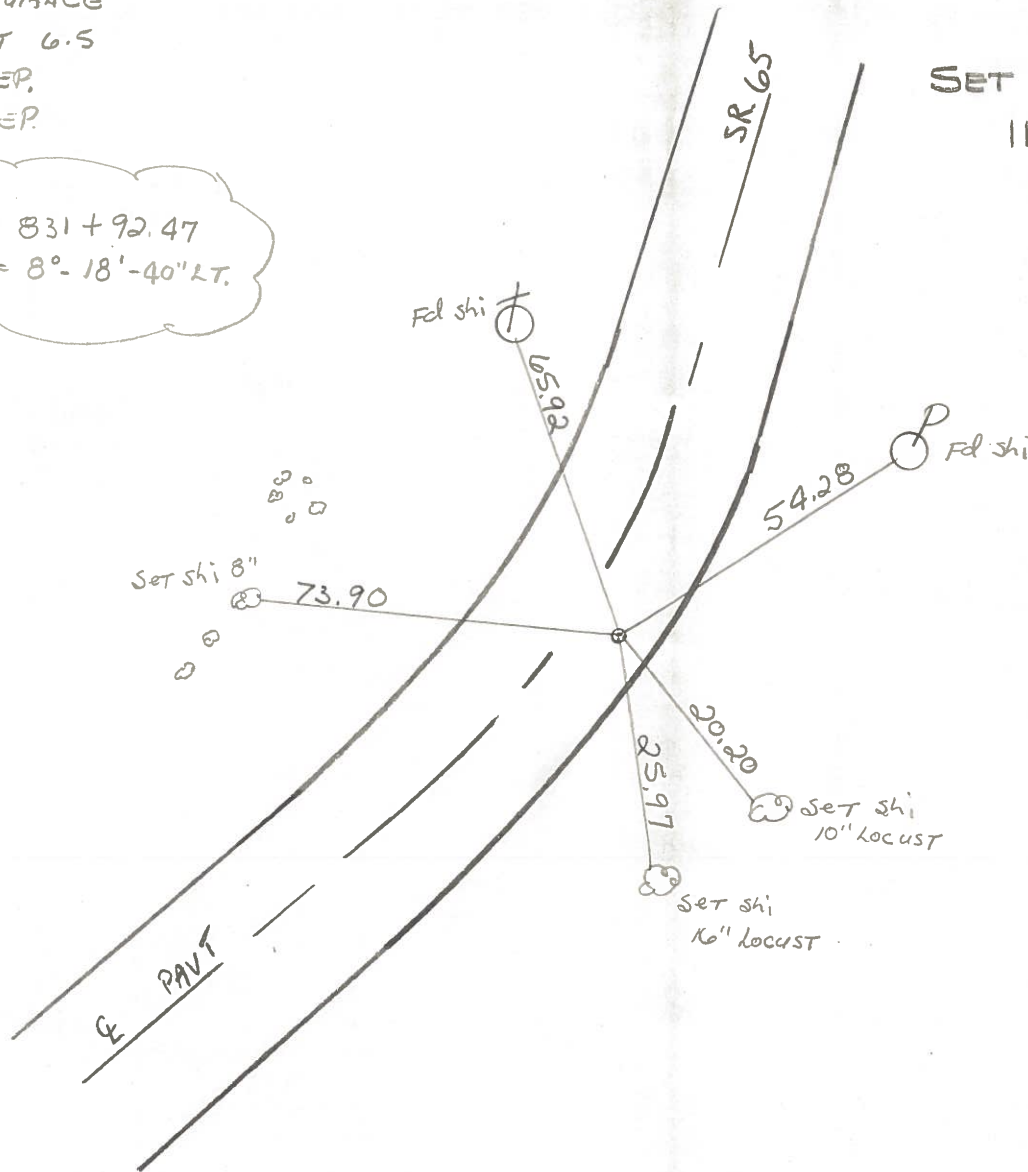
11-5-84

S.W.H.

RECORD:

P.I. STA = 831 + 92.47

$\Delta = 8^\circ - 18' - 40''$ LT.



County Wood S.R. #65

Date 4 Aug. 80

Township Pennsberg

Weather Warm

Section RT. 62

Temp. 80°

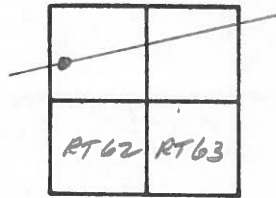
T N, R E

Personnel L. Stone

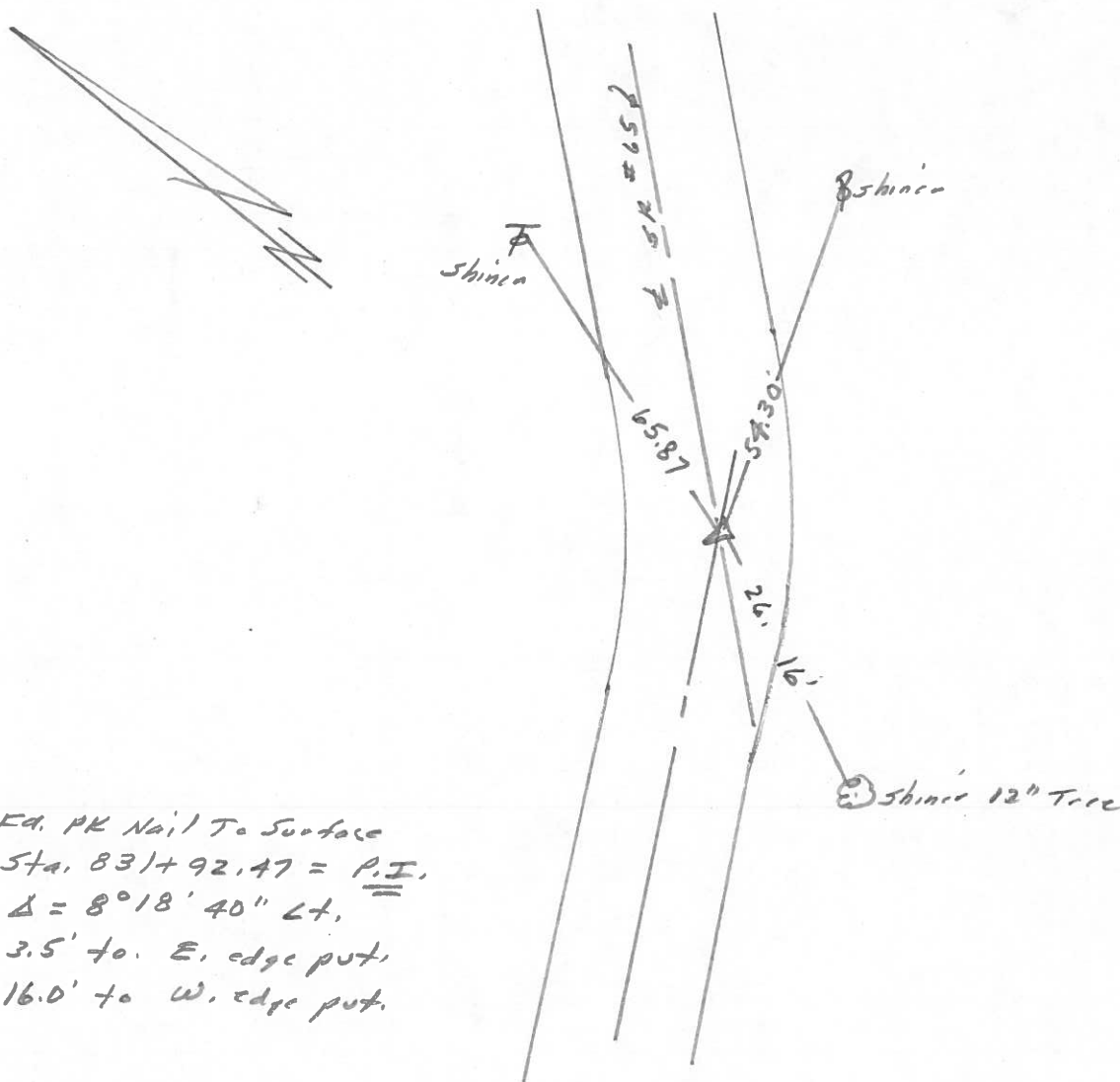
R. Michalek

P. Neuser

D. Curtis



#26-A



Ed. PK Nail To Surface
 Sta. 831+92.47 = P.I.
 $\Delta = 8^{\circ}18'40''$ Lt.
 3.5' to E. edge put.
 16.0' to W. edge put.

PERSONNEL TITLE PERSONNEL TITLE
 BURNSIDE _____
 SMITH _____

COUNTY Wood DATE 4-20-72

S. R. 65 WEATHER Cloudy-Rain

SEC. PERRYSBURG TWP TEMP. +46°

DESCRIPTION P.K. NAILS FOUND BEFORE RESURFACING PROJ. JOB NO. _____

