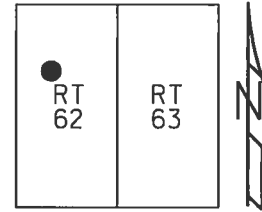


O.D.O.T. DISTRICT 2 SURVEY OFFICE (USE ONLY)

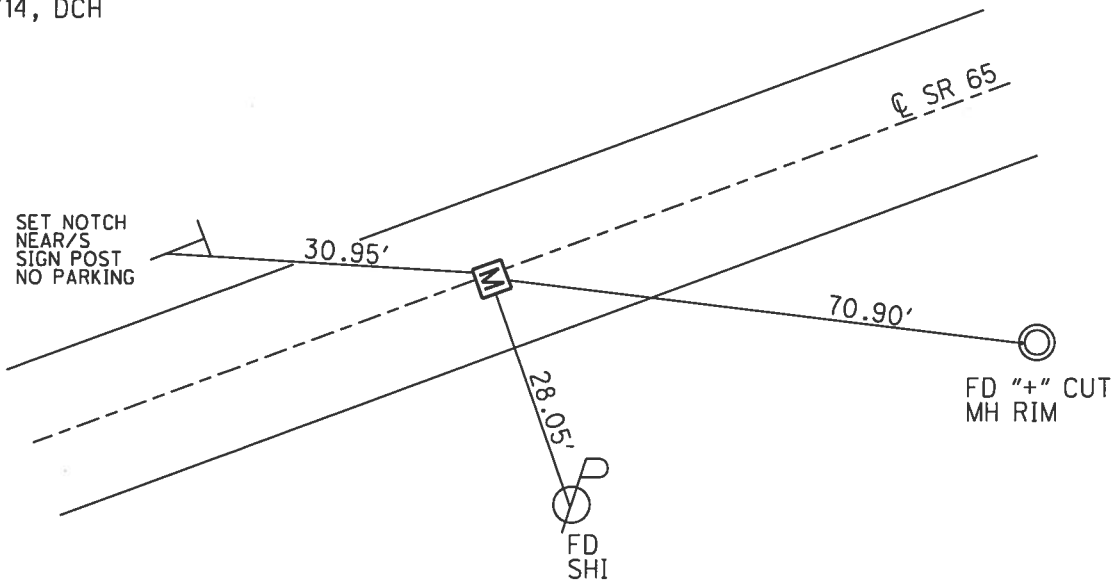
PERSONNEL _____ REFERENCE NO. 26 B SHEET 2 OF 25
 NOTES LEU DATE 8/14/14 ROUTE SR 65
 H.C. HOMAN WEATHER SUNNY COUNTY WOOD
 R.C. WESTFALL TEMP. 70° TOWNSHIP PERRYSBURG
 _____ SECTION RT 62
 _____ T 7 N R 10 E

TYPE MONUMENT MONBOX
 ON SURFACE - ~~BELOW~~ ON
~~LEFT~~ - C PAV'T - RIGHT 0.5'
9.4' TO RT EDGE PAVEMENT
 S.L.M. 840+45.17



Grid: Northing: 685967.590 Easting: 1647839.470

RECORD: P.I.
 STA. 837+98.58
 $\Delta = 2^\circ 43' RT$
 FD P.K.NAIL
 FD P.K./WASHER
 5/19/95, MB
 SET P.K./WASHER
 8/8/95, SAH
 FD MONBOX
 COULD NOT OPEN
 REFC26
 9/21/12, SAH
 SET "+" W/DIMPLE
 ON LID
 REFB26
 8/14/14, DCH



O.D.O.T. DISTRICT 2 SURVEY OFFICE

PERSONNEL _____

REFERENCE NO. 26-B

SHEET 73 OF 91

NOTES BARNHISEL

H.C. CORDES

R.C. BARNHISEL

DATE 5-19-95

WEATHER Sunny

TEMP. 78°F

ROUTE SR. 65

COUNTY Wood

TOWNSHIP Perrysburg

SECTION RT-62

T 7 N R 10 E

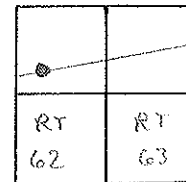
TYPE MONUMENT PK/WASHER

ON SURFACE - ~~BELOW~~

LEFT - ~~C~~ PAV'T. - RIGHT OS'

9.4 TO RT EDGE PAVEMENT

S.L.M. 838+40



Record:

Fd. PK. @ surface

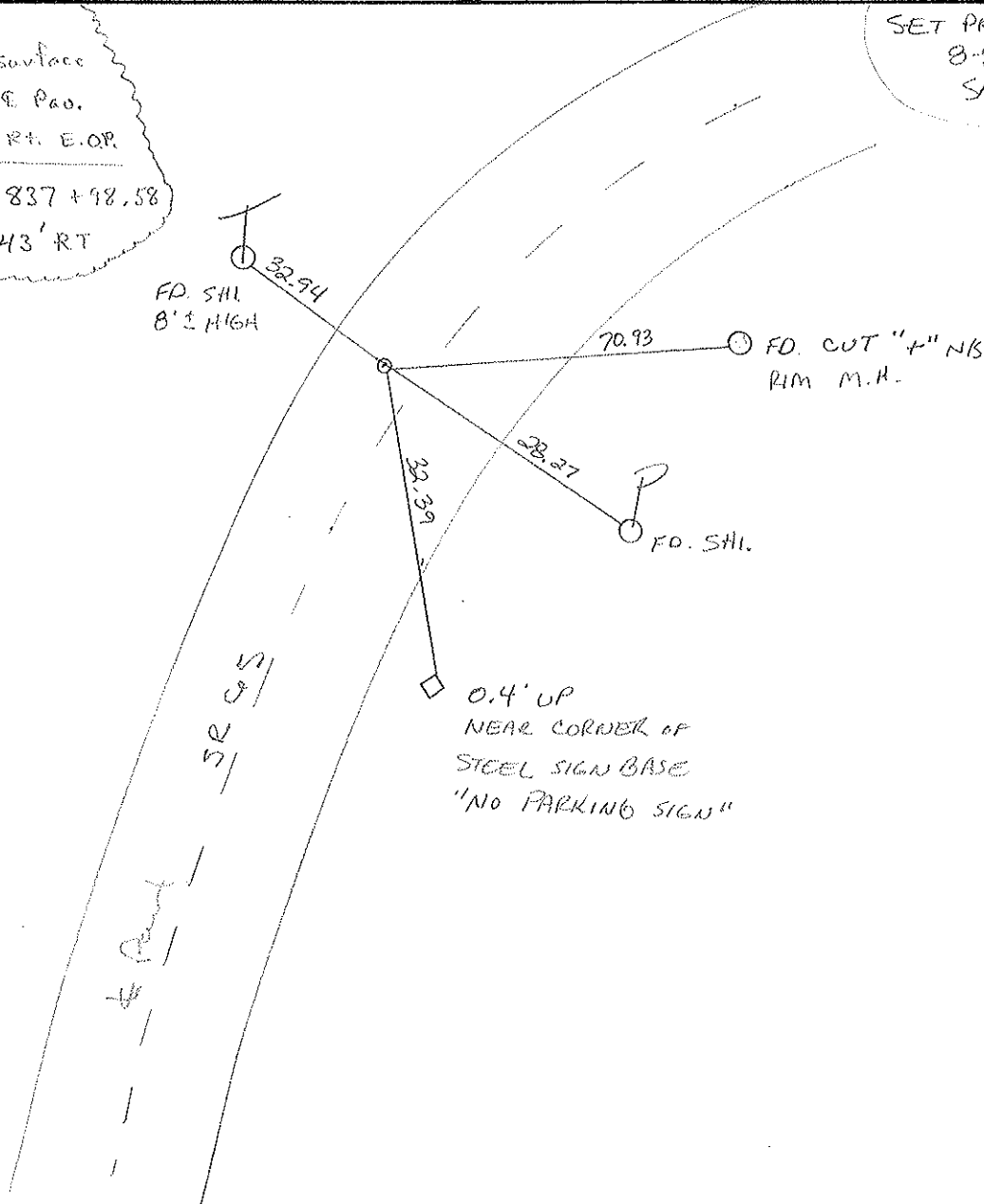
0.5' RT E Pao.

9.2' TO RT. E.O.P.

P.I. Sta. 837+48.58

$A = 2^{\circ} - 43' RT$

SET PK/WASHER
8-8-95
SAH



County WOOD S.R. 65

Date 5-10-84

Township PERRYS BURG

Weather Clear

Section R.T. 62

Temp. 50°

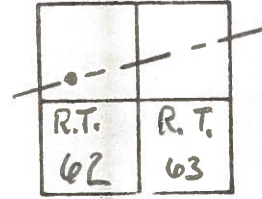
T7N, R10E

Personnel HOFFMAN

LOEHRKE

HOUSEHOLDER

BARNHISEL



Ref # 26-B

SLM = 838+40

Fd P.K. @ SURFACE

0.5' RT. & PAWT

9.2' TO RT. EP.

10.0' TO LT. EP.

Record!

P.I. STA. = 837+98.58

$\Delta = 2^{\circ} 43' RT.$

Set shi



70.96

CUT "4" N/S Rim m.H.

28.43



Fd shiior

S.R. 65

SET PK/WASHER

11-5-84

SW.H.

PAWT

County Wood S.R. # 65

Date 7 Aug. 80

Township Perrysburg

Weather Warm

Section RT 62

Temp. 80°

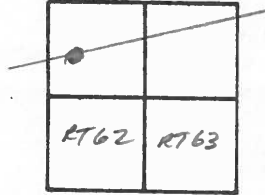
T N, R E

Personnel L. Stone

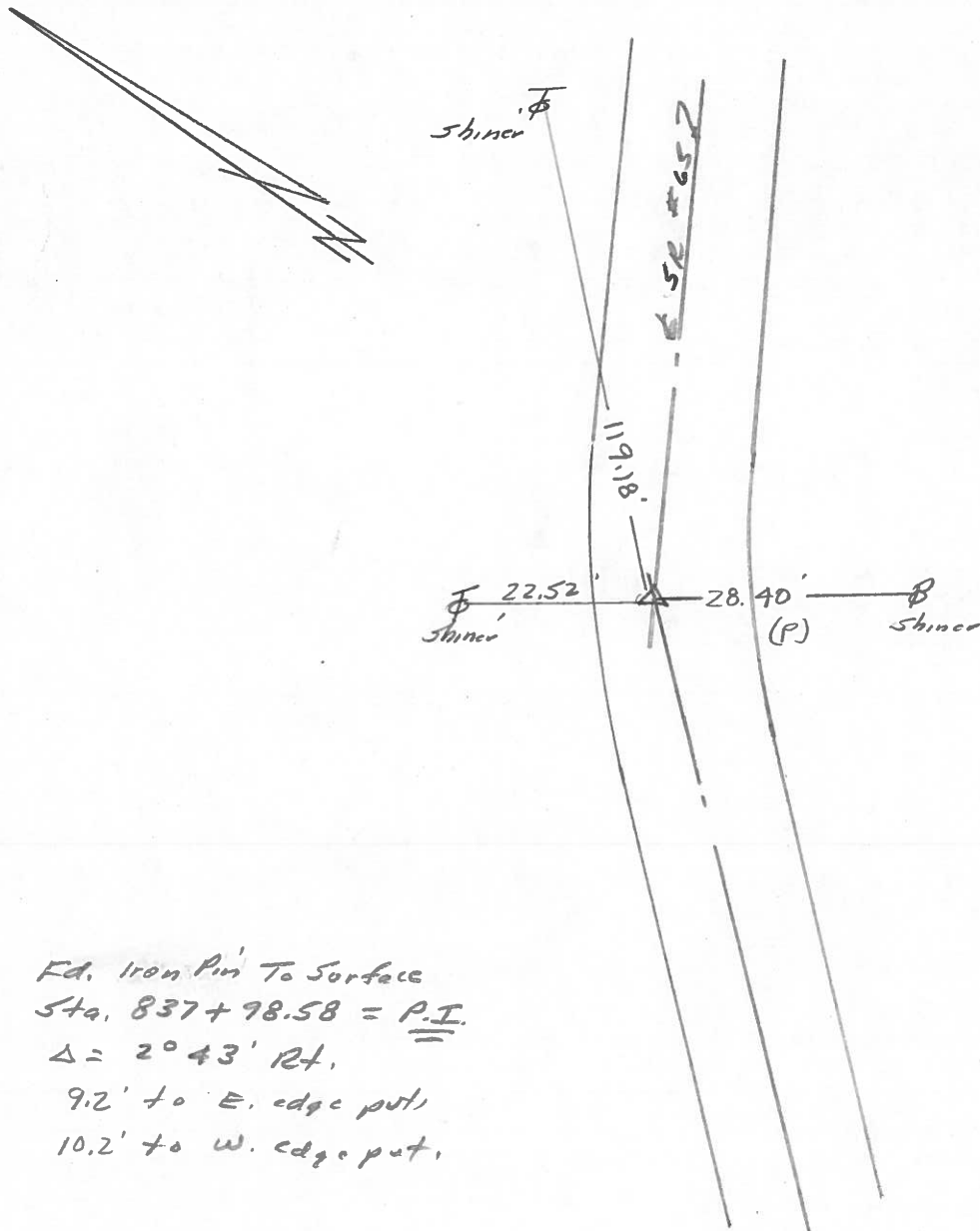
P. Neuse

D. Curtis

R. Michalak



#26-B



Fd. Iron Pin To Surface
 Sta. $837 + 98.58 = \underline{\underline{P.I.}}$
 $\Delta = 2^{\circ} 43' \text{ Rt.}$
 9.2' to E. edge put,
 10.2' to W. edge put.