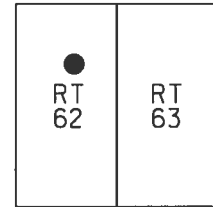


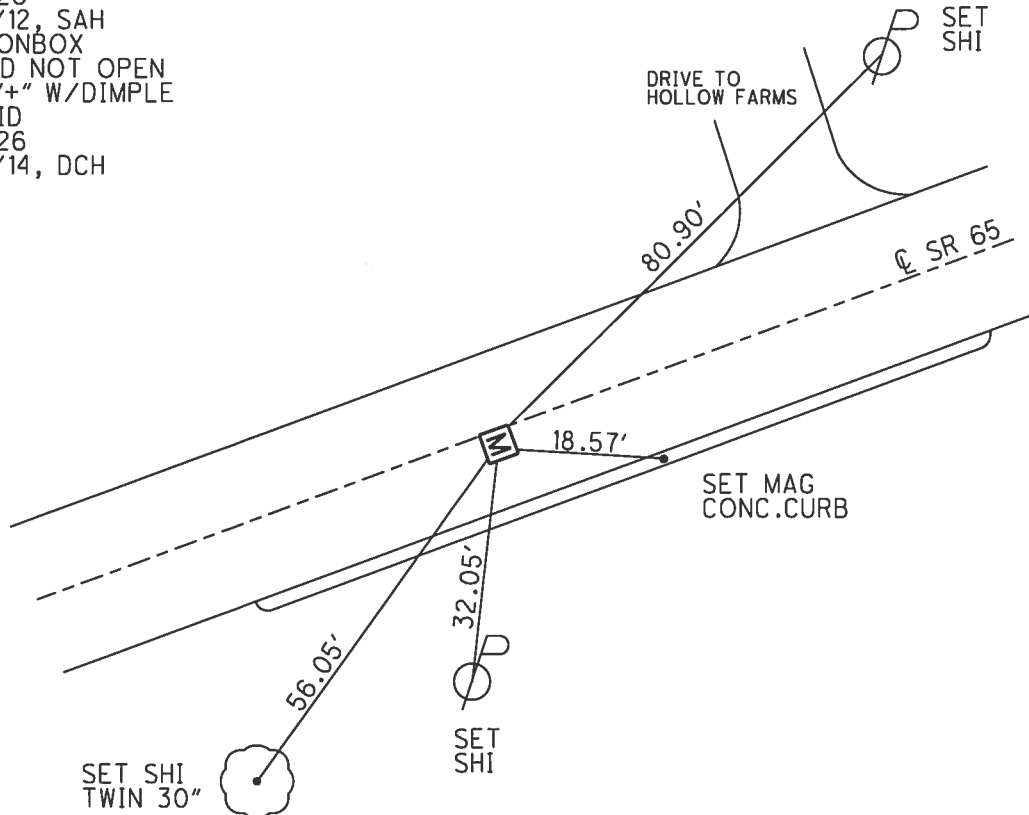
O.D.O.T. DISTRICT 2 SURVEY OFFICE (USE ONLY)

PERSONNEL _____ REFERENCE NO. 26 C SHEET 3 OF 25
 NOTES LEU DATE 8/14/14 ROUTE SR 65
 H.C. HOMAN WEATHER SUNNY COUNTY WOOD
 R.C. WESTFALL TEMP. 70° TOWNSHIP PERRYSBURG
 SECTION RT 62
 T 7 N R 10 E

TYPE MONUMENT MONBOX
 ON SURFACE - ~~BELOW~~ ON _____
~~LEFT~~ - ℄ PAV'T - RIGHT 1'
8.7' TO LT EDGE PAVEMENT
 S.L.M. 844+19.03
 Grid: Northing: 686103.410 Easting: 1648187.780



RECORD: P.I.
 STA. 841+74.31
 $\Delta = 5^\circ 36' 20''$ RT
 FD P.K./WASHER
 5/19/95, MB
 SET P.K./WASHER
 8/8/95, SAH
 FD P.K.NAIL
 REFD26
 9/21/12, SAH
 FD MONBOX
 COULD NOT OPEN
 SET "+" W/DIMPLE
 ON LID
 REFC26
 8/14/14, DCH



O.D.O.T. DISTRICT 2 SURVEY OFFICE

PERSONNEL _____

REFERENCE NO. _____

SHEET 74 OF 91

NOTES BARNHISEL

H.C. CORDES

R.C. BARNHISEL

DATE 5-19-95

WEATHER SUNNY

TEMP. +75°

ROUTE S.R. 65

COUNTY WOOD

TOWNSHIP PERRYSBURG

SECTION R.T. 62

T 7 N R 10 E

TYPE MONUMENT PK/WASHER

ON SURFACE - BELOW

LEFT - 0 PAV'T. - RIGHT 1.8' LT.

8.7 TO LT. EDGE PAVEMENT

S.L.M. 842+16

●	●
RT 62	RT 63

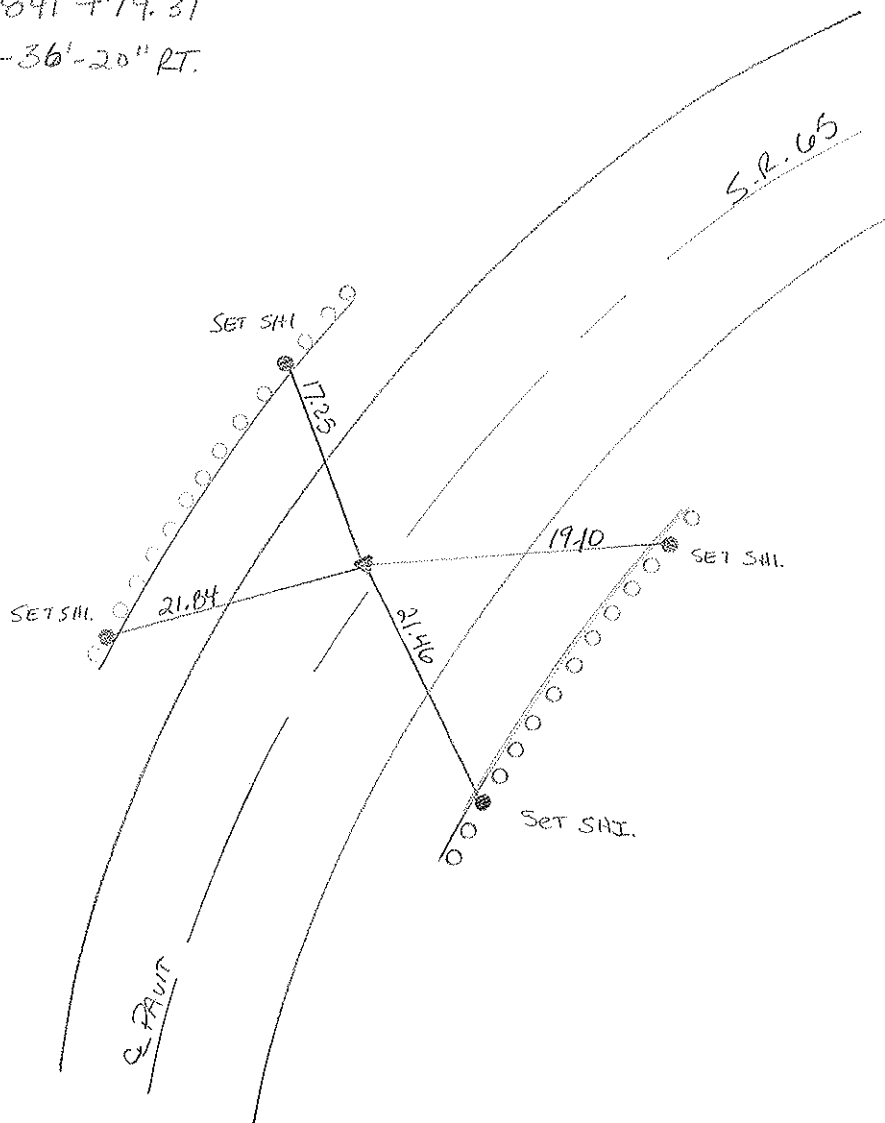


RECORD : SLM = 842+16

PI STA. = 841+74.31

$\Delta = 5^{\circ}-36'-20''$ RT.

Set PK/washer
@ 8.75 SAH



County Wood S.R. 65

Date 5-10-84

Township PERRYSBURG

Weather CLEAR

Section R.T. 62

Temp. 50°

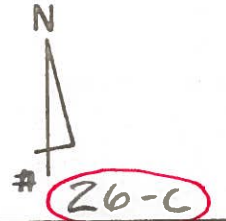
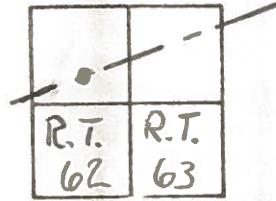
TZN, RICE

Personnel HOFFMAN

LOENLGE

HOUSEHOLDER H.C.

BARNHISEL R.C.



"A" = Fd P.K. @ surface
 1.9' LT. of & PAUT
 7.4' TO LT. EP
 11.6' TO RT. EP

SET PK/WASHER
 @ PT. "A" ONLY
 S.W.H.

SLM 842+16

DID NOT RESET "B" OR "C"

RECORD:

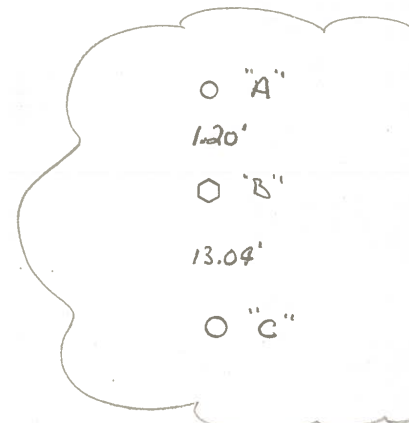
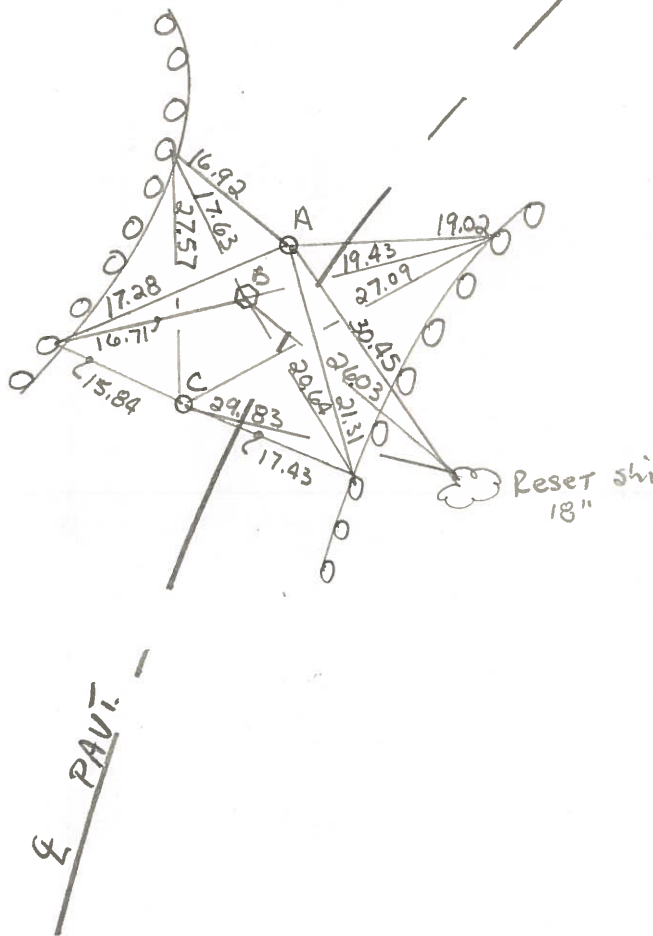
P.I. STA. = 841+74.31

$\Delta = 5^\circ - 36' - 20''$ RT.

S.R. 65

"B" = Fd R.R. SPK @ surface
 ORIGIN UNKNOWN
 1.4' LT. of & PAUT

"C" = Fd P.K. @ surface
 ORIGIN UNKNOWN
 1.6' LT. of & PAUT



County Wood S.R. # 65

Date 4 Aug. 80

Township Perrysburg

Weather Warm

Section RT-62

Temp. 80°

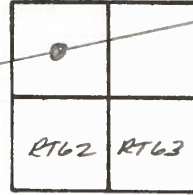
T N, R E

Personnel I. Stone

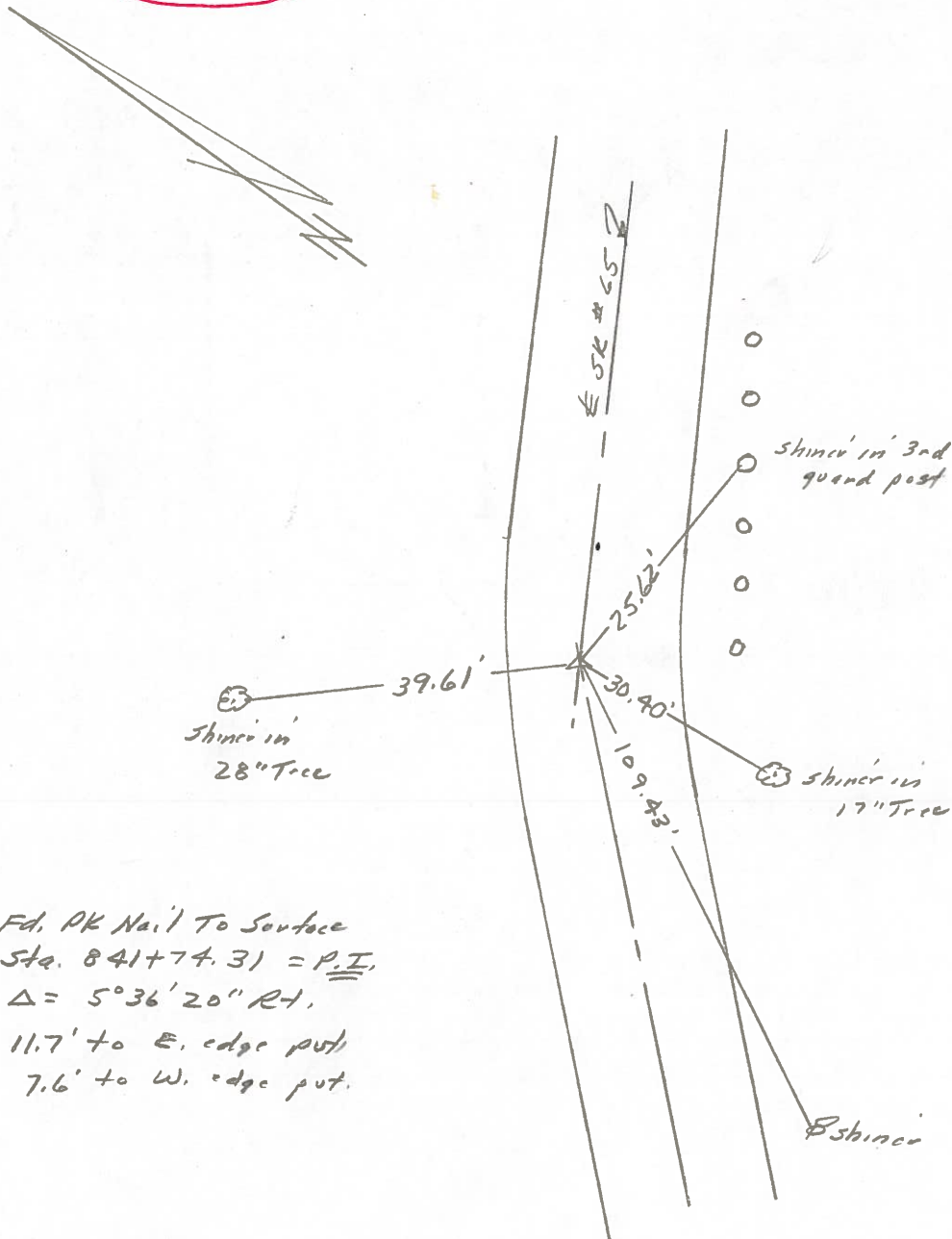
R. Michalak

P. Neuser

D. Curtis



#26-C



Fd. PK Nail To Surface
 Sta. 841+74.31 = P.I.
 $\Delta = 5^{\circ}36'20''$ Rt.
 11.7' to E. edge put
 7.6' to W. edge put.