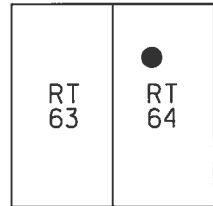


O.D.O.T. DISTRICT 2 SURVEY OFFICE (USE ONLY)

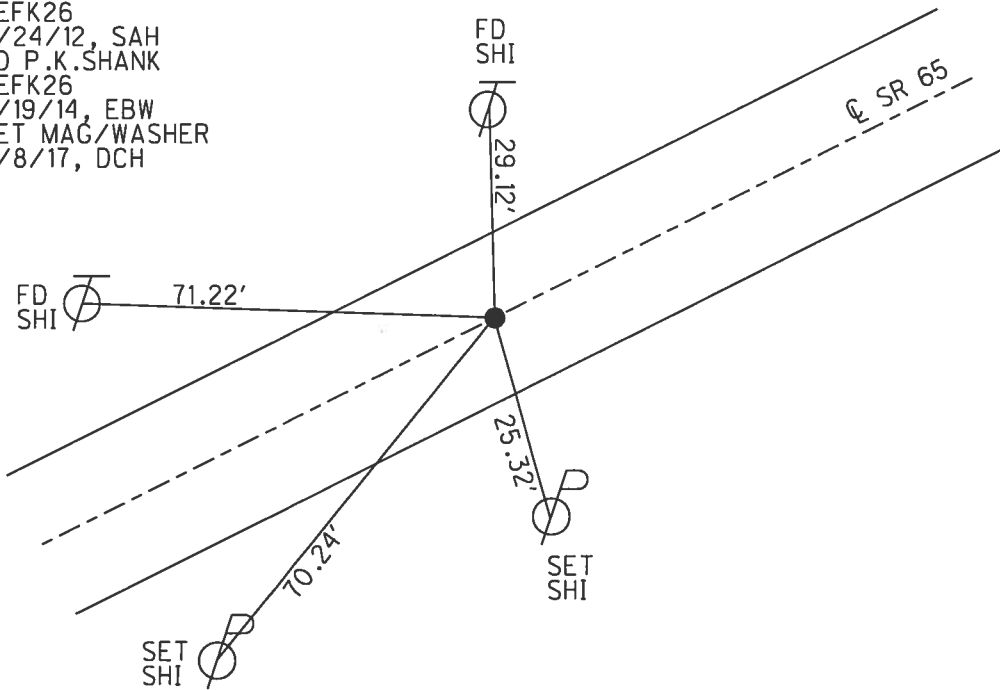
PERSONNEL _____ REFERENCE NO. 26 K SHEET 10 OF 25
 NOTES LEU DATE 8/19/14 ROUTE SR 65
 H.C. WESTFALL WEATHER SUNNY COUNTY WOOD
 R.C. RHOADES TEMP. 70° TOWNSHIP PERRYSBURG
 _____ SECTION RT 64
 _____ T 7 N R 10 E

TYPE MONUMENT P.K.SHANK
 ON SURFACE - ~~BELOW~~ ON
 LEFT - ☉ PAV'T - RIGHT ON
11.0' TO RT EDGE PAVEMENT
 S.L.M. 863+45.66



Grid: Northing: 687048.538 Easting: 1649843.424

RECORD: P.O.T.
 STA. 860+99.72
 FD LG.R.R.SPIKE
 11/5/84
 FD P.K./WASHER
 ATOP LG.R.R.SPIKE
 3" DOWN
 5/19/95, MB
 SET P.K./WASHER
 8/15/95, CL
 FD P.K./WASHER
 REFK26
 9/24/12, SAH
 FD P.K.SHANK
 REFK26
 8/19/14, EBW
 SET MAG/WASHER
 6/8/17, DCH



O.D.O.T. DISTRICT 2 SURVEY OFFICE

PERSONNEL _____

REFERENCE NO. _____

SHEET 78 OF 91

NOTES BALUNISEL

H.C. CORDES

R.C. BARNHISEL

DATE 5-19-95

WEATHER SUNNY

TEMP. +75°F

ROUTE S.R. 65

COUNTY WOOD

TOWNSHIP PERRYSBURG

SECTION R.T. 04

T 7 N R 10 E

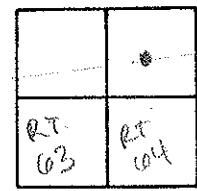
TYPE MONUMENT PK/WASHER

ON SURFACE - BELOW

~~LEFT~~ - € PAV'T. - RIGHT

11.0 TO RT EDGE PAVEMENT

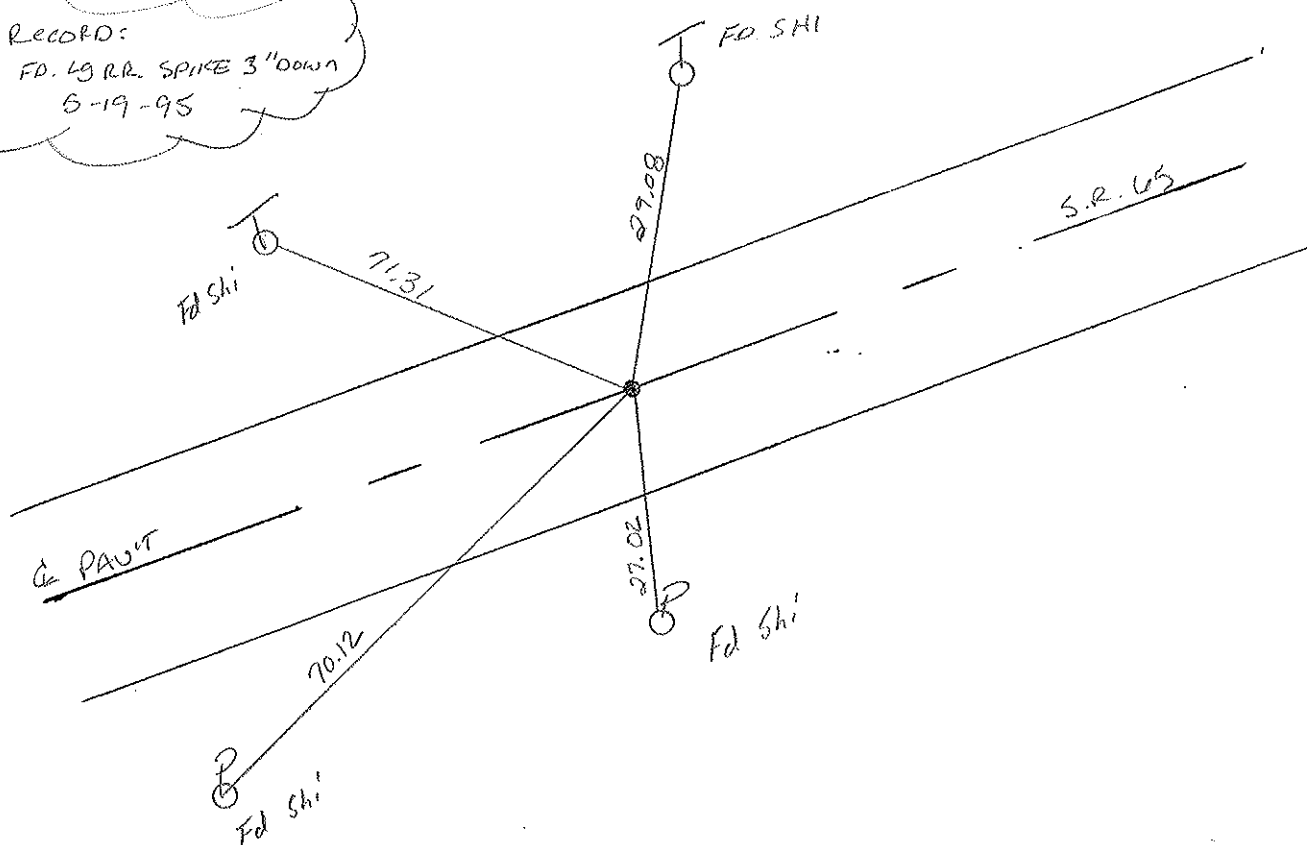
S.L.M. 861+38



RECORD:
 FD. LG. RR. SPIKE
 P.O.T. STA = 860+99.72
 11-5-84

SET PK/WASHER
 8-15-95
 C.L.

RECORD:
 FD. LG. RR. SPIKE 3" DOWN
 5-19-95



County WOOD S.R. 65

Date 5-10-84

Township PERRYSBURG

Weather Clear

Section R.T. 64

Temp. 60°

T1N, R10E

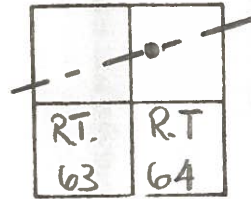
Personnel HOFFMAN

LOHRKE

HOUSEHOLDER H.C.

BARNHISEL R.C.

26-K



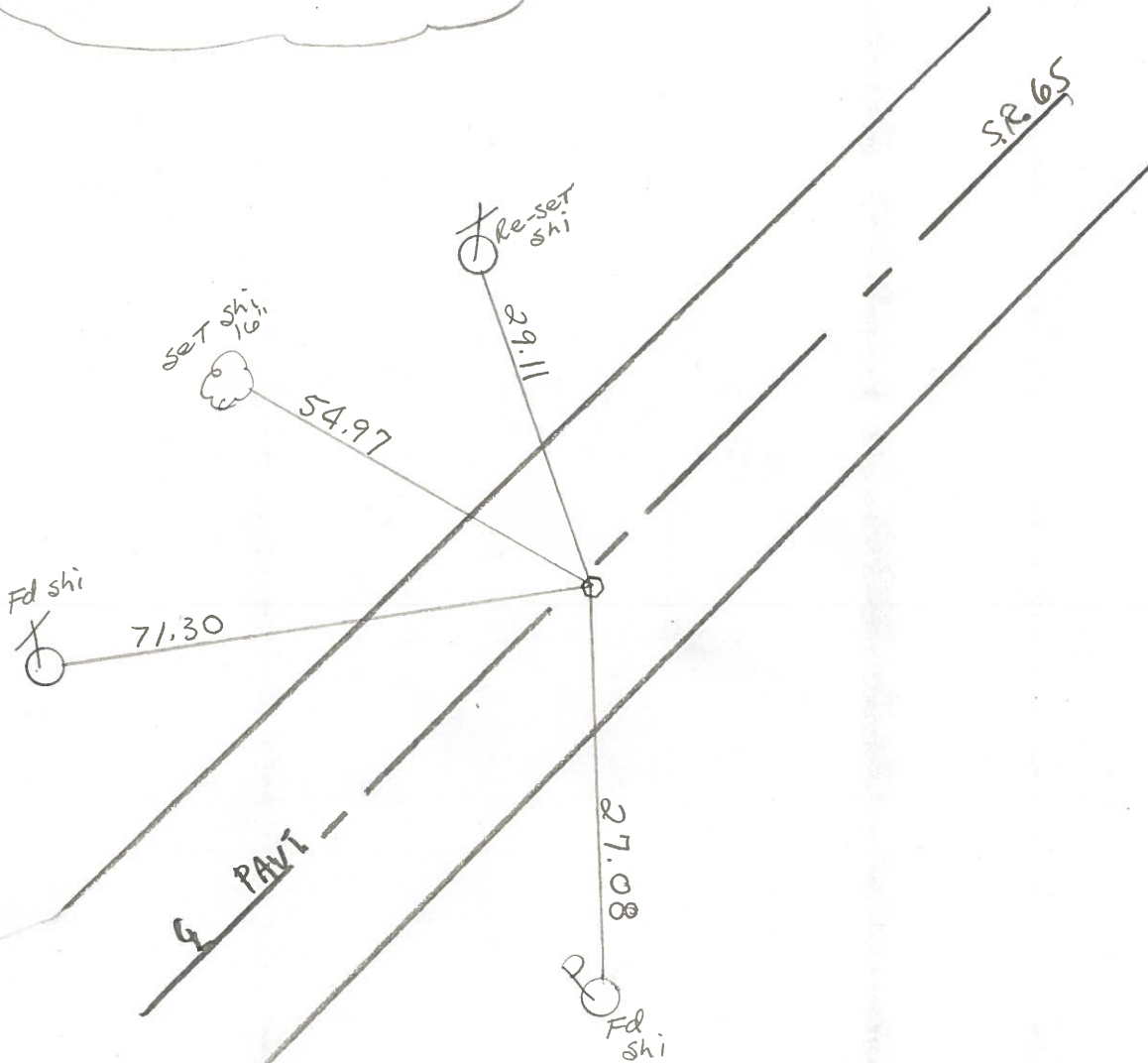
Ref # 26-F

Fd BOAT SPK @ SURFACE
 ON & PAVT
 9.4' TO RT. EP.
 9.6' TO LT. EP.

SLM 861+38

SET PK/WASHER
 11-5-84
 SWH.

Record:
 P.O.T. STA. = 860+99.72



O.D.O.T. DISTRICT 2 SURVEY OFFICE

Sht. ___ of ___

County Wood S.R. #65

Date 7 Aug. 80

Township Perryburg

Weather Warm

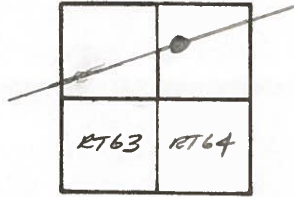
Section RT-64

Temp. 80°

T N, R E

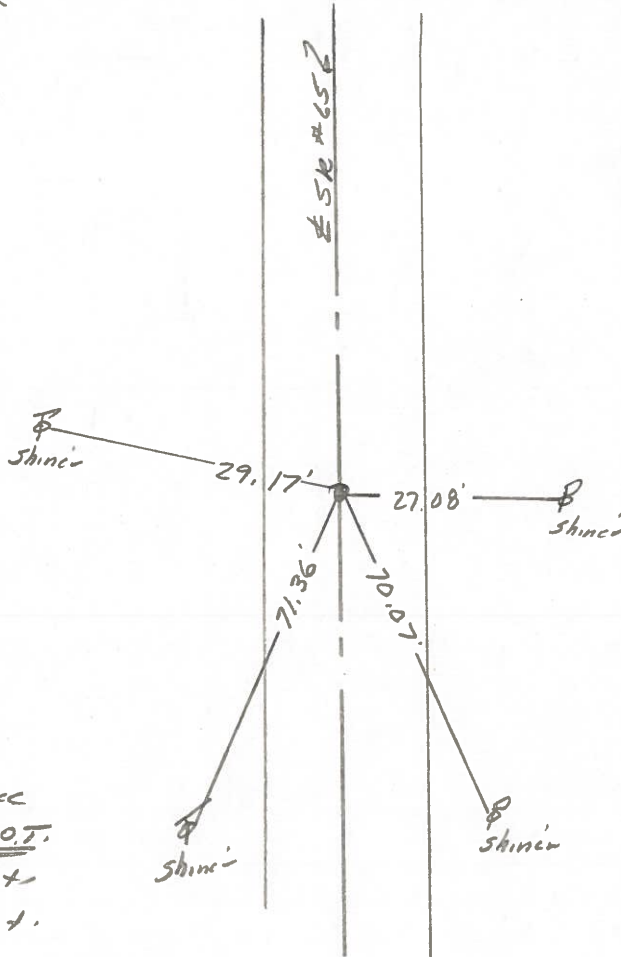
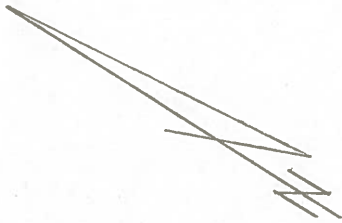
Personnel I. Stone
R. Michalak
P. Newson
D. Curtis

26-K



26-F

Ref. No 32



Fd. Boat Spk. To Surface
 Sta. 860+99.72 = P.O.T.
 9.2' to E. edge put
 10.2' to W. edge put.

NNEL TITLE PERSONNEL TITLE

COUNTY Wood

DATE 8-18-60

venthal
Young

S. R. 65

WEATHER Clear

SEC. 11.96-17.65

TEMP 80's

DESCRIPTION

CONTROL POINTS

JOB NO.

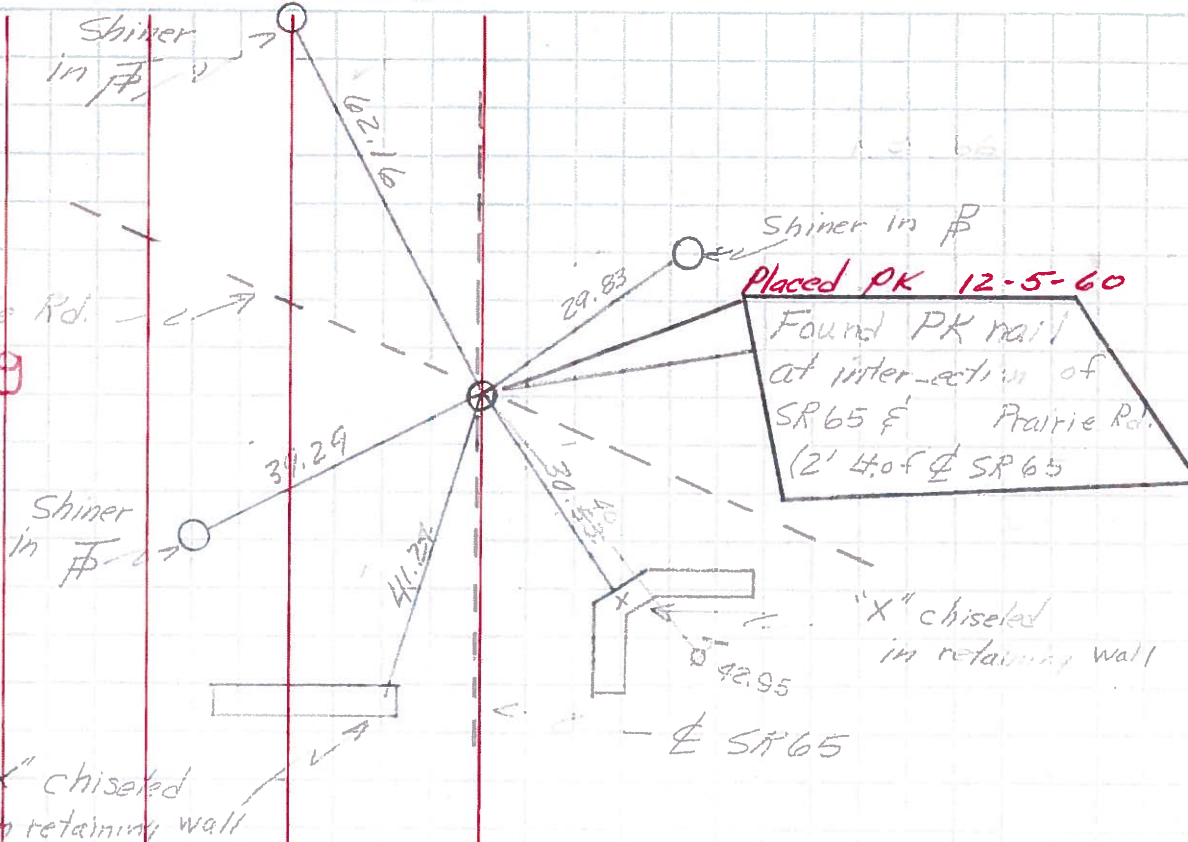
LEFT

CENTER LINE

RIGHT

26

± Hull Prairie Rd.
759



26-K

760

