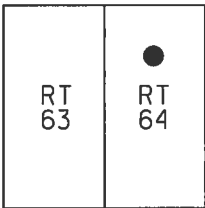


O.D.O.T. DISTRICT 2 SURVEY OFFICE (USE ONLY)

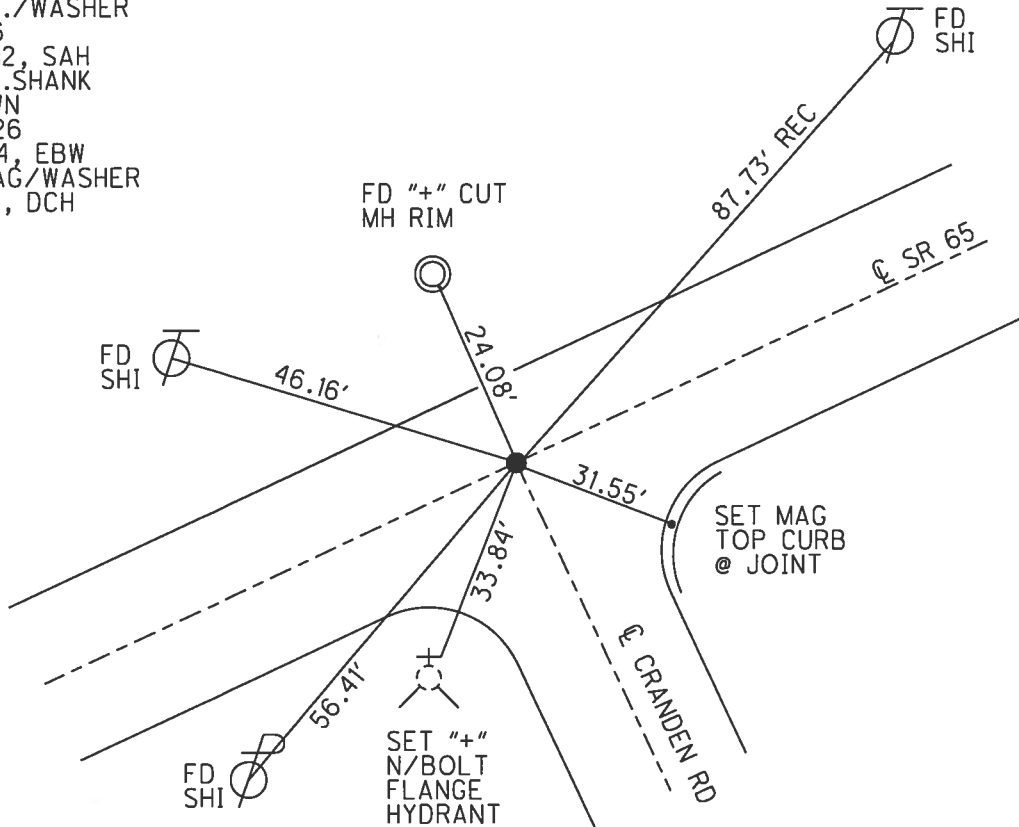
PERSONNEL \_\_\_\_\_ REFERENCE NO. 26 L SHEET 11 OF 25  
 NOTES LEU DATE 8/19/14 ROUTE SR 65  
 H.C. WESTFALL WEATHER SUNNY COUNTY WOOD  
 R.C. RHOADES TEMP. 70° TOWNSHIP PERRYSBURG  
 \_\_\_\_\_ SECTION RT 64  
 \_\_\_\_\_ T 7 N R 10 E

TYPE MONUMENT P.K.SHANK  
~~ON SURFACE~~ - BELOW 3"  
~~LEFT~~ - CL PAV'T - RIGHT 0.5'  
10.9' TO LT EDGE PAVEMENT  
 S.L.M. 865+48.62



Grid: Northing: 687136.592 Easting: 1650026.290

RECORD: P.O.T.  
 STA. 863+02.79  
 FD P.K./WASHER  
 5/19/95, MB  
 SET P.K./WASHER  
 8/15/95, CL  
 FD P.K./WASHER  
 REFL26  
 9/24/12, SAH  
 FD P.K.SHANK  
 3" DOWN  
 REFGG26  
 8/19/14, EBW  
 SET MAG/WASHER  
 6/8/17, DCH



# O.D.O.T. DISTRICT 2 SURVEY OFFICE

PERSONNEL \_\_\_\_\_

REFERENCE NO. # 266

SHEET 79 OF 91

NOTES M. Barnhisel

H.C. B. Cordes

R.C. M. Barnhisel

DATE 5-19-95

WEATHER Sunny - Clear

TEMP. +75° F

ROUTE SR-65

COUNTY Wood

TOWNSHIP Powaytown

SECTION R.T. 64

T 7 N 10 E

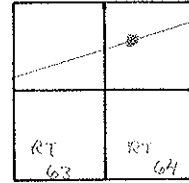
TYPE MONUMENT PK/Washer

(ON SURFACE) - ~~BELOW~~ On surface

LEFT - E PAV'T. - RIGHT E

100' TO LT. EDGE PAVEMENT

S.L.M. 863140



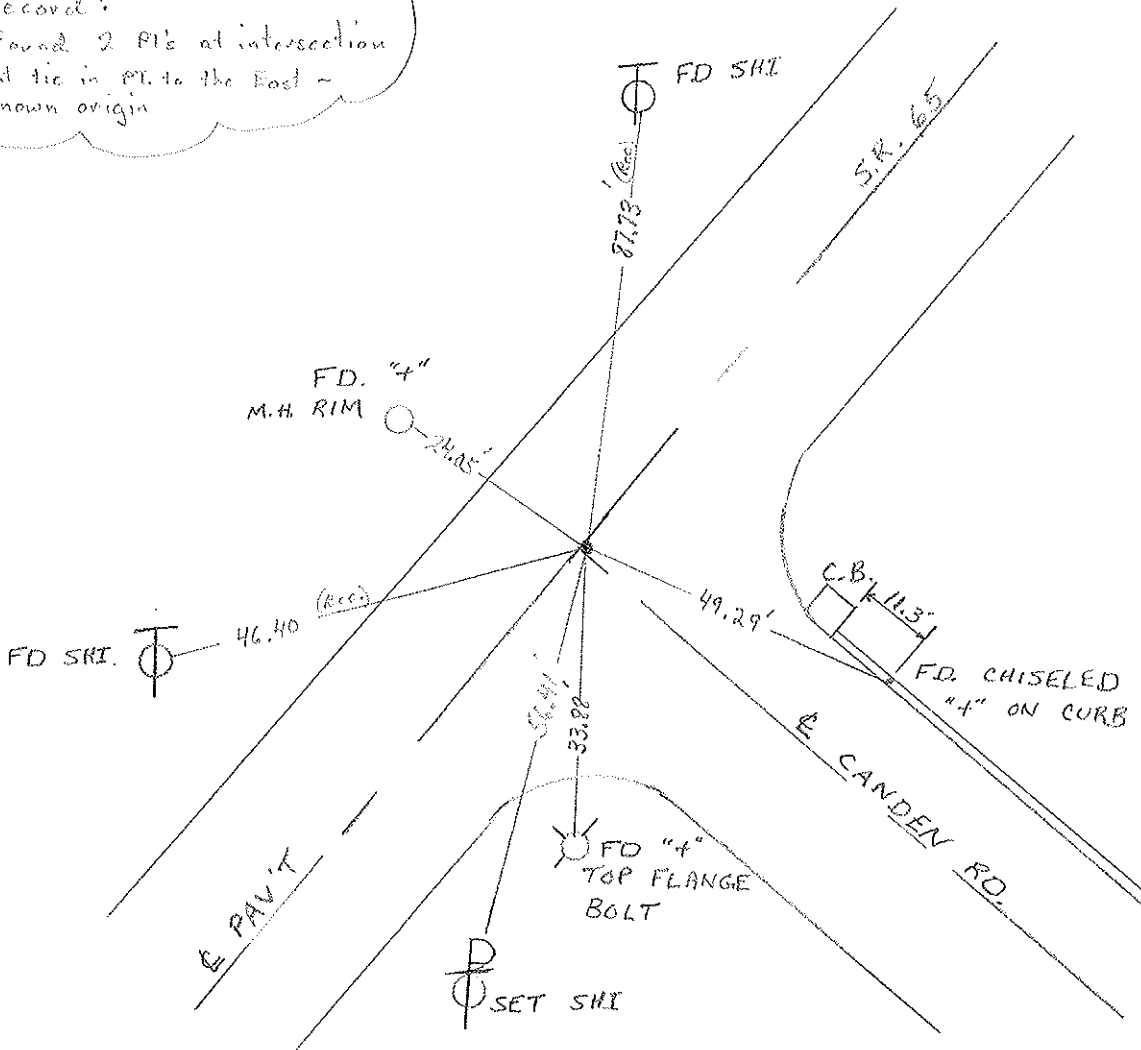
RECORD:

POI. STA = 863402.79

Set PK/Washer  
8-15-95  
Ch.

Record:

Found 2 PI's at intersection  
didn't tie in PI to the East -  
unknown origin



County Wood S.R. 65

Date 5-10-84

Township PERRYSBURG

Weather CLEAR

Section R.T. 64

Temp. 60°

TZN, R/OE

Personnel HOFFMAN

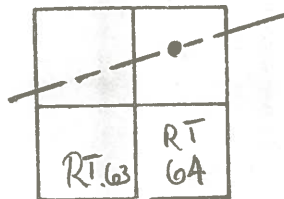
LOEHRKE

HOUSEHOLDER H.C.

BARNHISEL R.C.

**26-L**

#26-G



Fd P.K. @ surface

1.2' RT. of & Pavt

10.9' TO LT. CP

SLM = 863+40

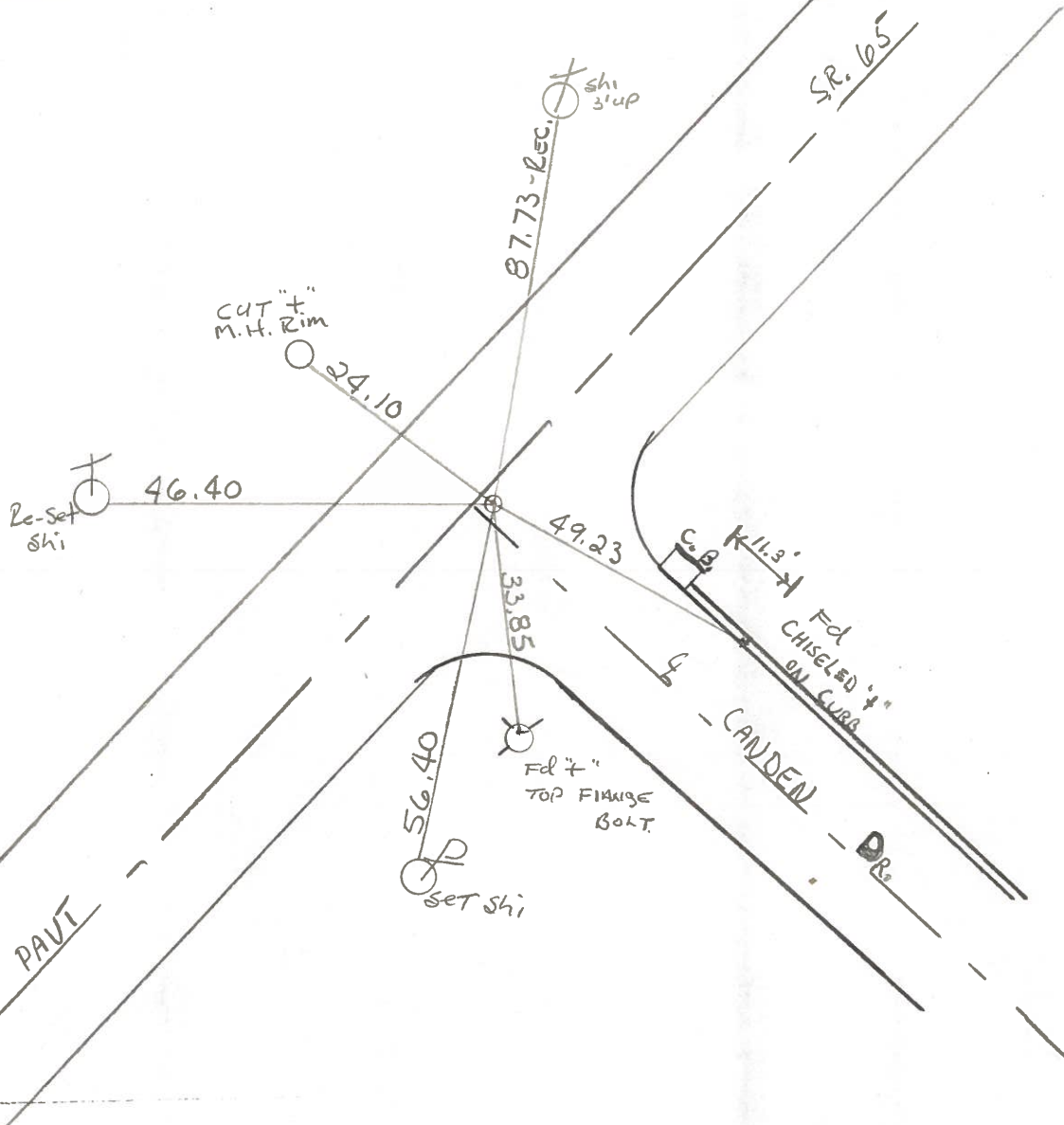
SET PK/WASHER

11-5-84

S.W.H.

Record:

P.O.T. STA. = 863+02.79



Q.D.O.T. DISTRICT 2 SURVEY OFFICE

Sht. \_\_\_ of \_\_\_

County Wood S.R. #65

Date 4 Aug. 80

Township Perryburg

Weather Warm

Section RT-64

Temp. 80°

T\_N, R\_E

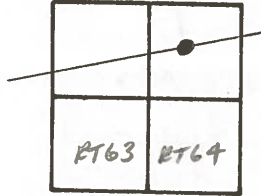
Personnel J. Stone

P. Neuser

R. Michalek

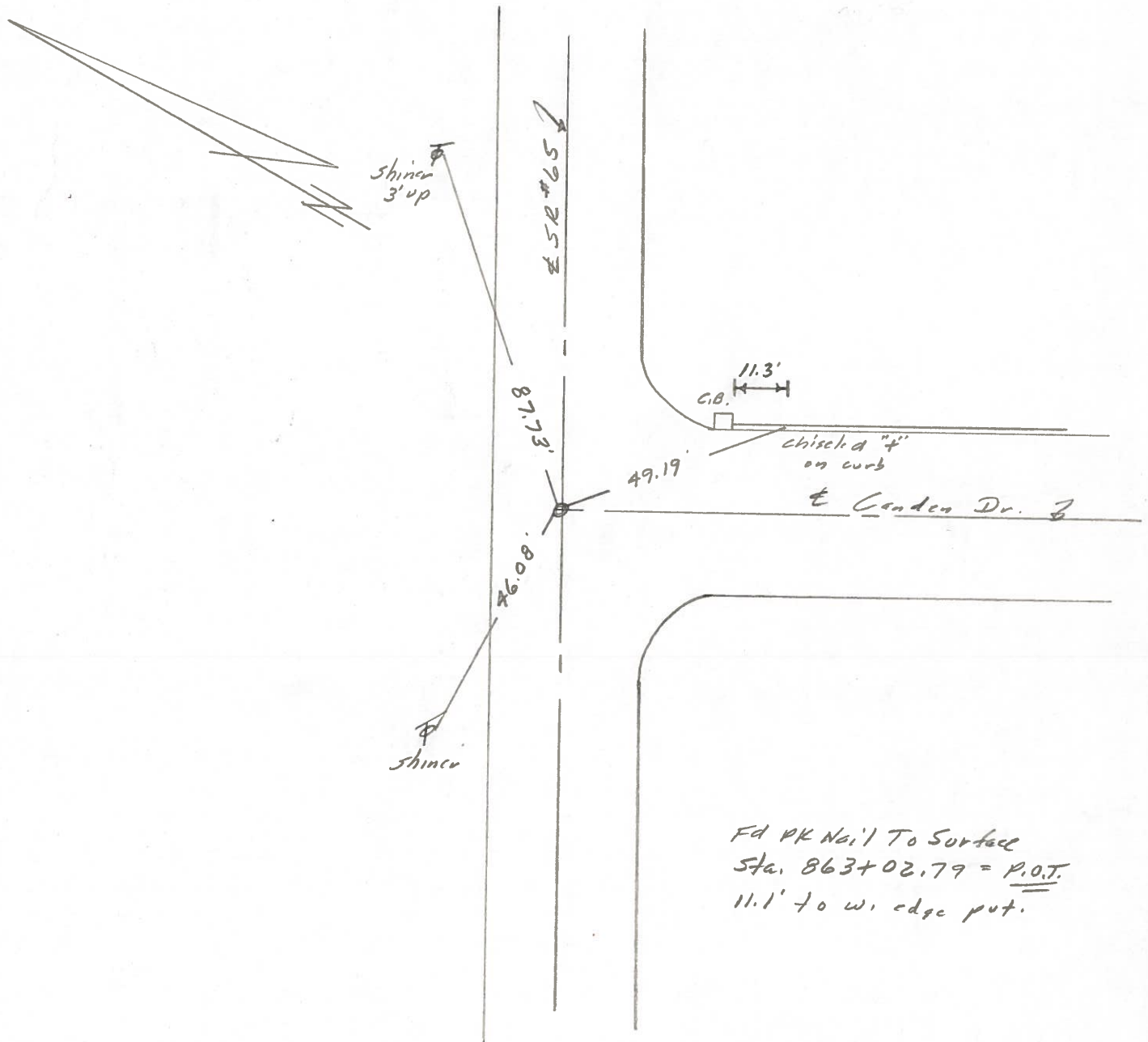
D. Curtis

26-L



26-6

RT # 33



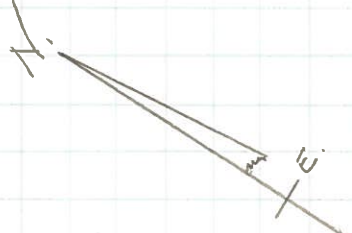
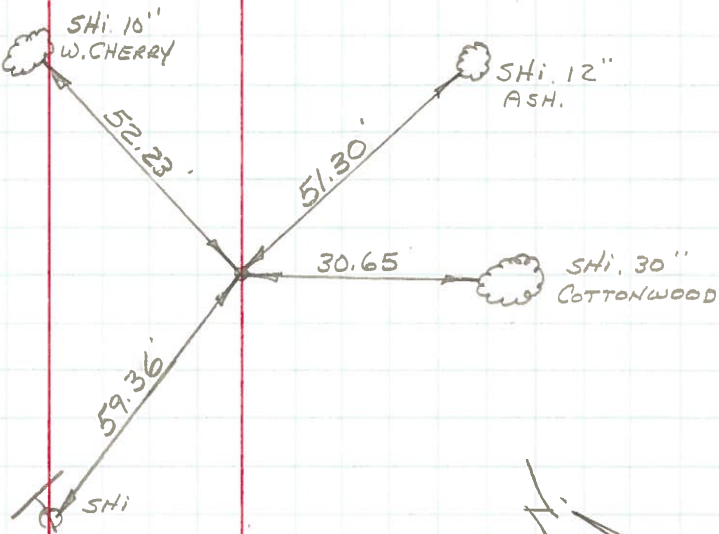
PERSONNEL	TITLE	PERSONNEL	TITLE
BURNSIDE			
SMITH			
BOWERS			
SARDEJA	E.I.T.		

COUNTY WOOD DATE 4-30-71  
 S. R. #65 WEATHER CLEAR  
 SEC. PERRYSBURG TWP TEMP. +58

DESCRIPTION \_\_\_\_\_ CONTROL POINTS \_\_\_\_\_ JOB NO. \_\_\_\_\_  
 LEFT CENTER LINE RIGHT

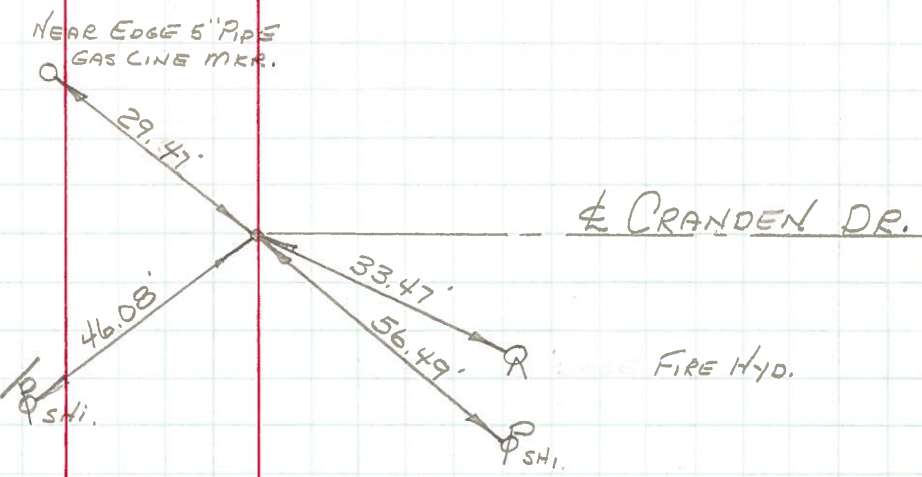
26-N

OK 4-19-72  
 FD. P.K. NAIL 1.5' E.T.O.F.  
 S.L.M. STA. 868+17±  
 (SET P.K. 5-9-72)  
 #762



26-L

K 4-19-72  
 FD. P.K. NAIL  
 S.L.M. STA. 862+99±  
 (SET P.K. 5-9-72)  
 #761



PERSONNEL	TITLE	PERSONNEL	TITLE
Delventhal			
Young			

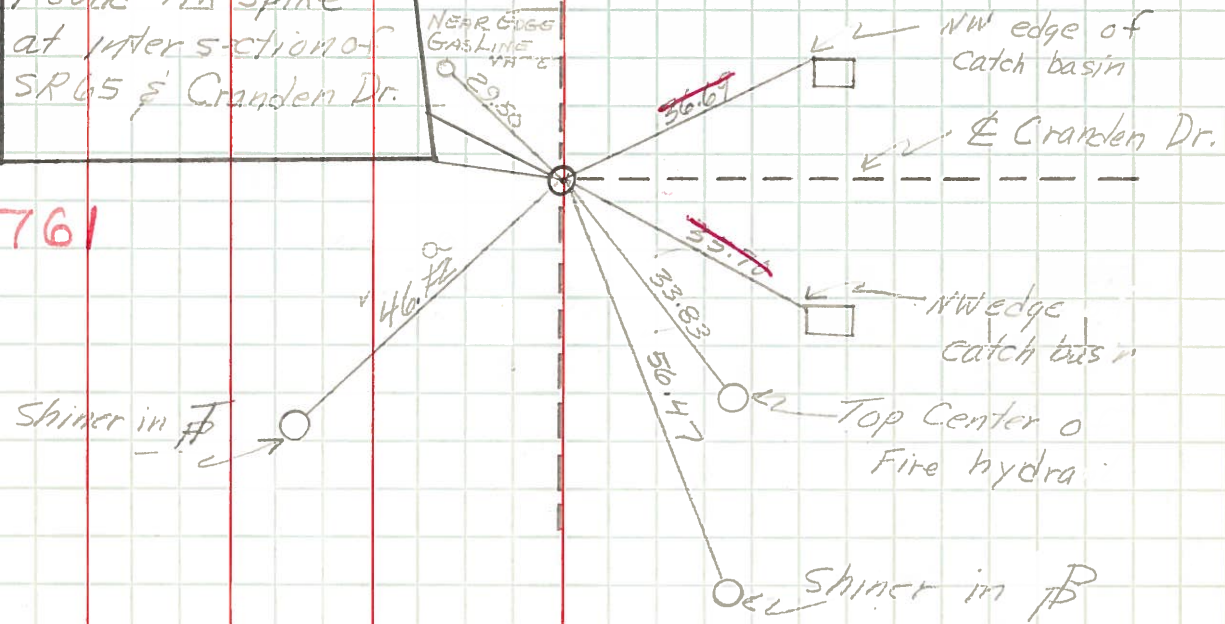
COUNTY Wood DATE 8-18-60  
 S. R. 65 WEATHER Clear  
 SEC. 11.96-17.65 TEMP. 80's

DESCRIPTION CONTROL POINTS JOB NO. \_\_\_\_\_  
 LEFT CENTER LINE RIGHT

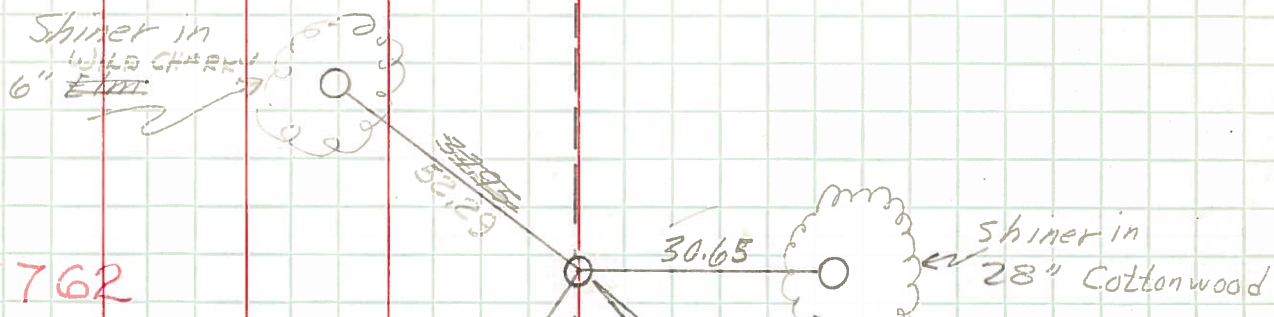
26-L

O.K. Placed P.K. 12-6-60  
 Found RR spike  
 at intersection of  
 SR 65 & Cranden Dr.

# 761



26-N



# 762

Placed PK 12-6-60  
 Found PK 11  
 515' ± NE of  
 Cranden Dr. 1' ROF  
 of SR 65

