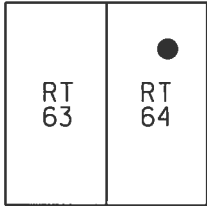


O.D.O.T. DISTRICT 2 SURVEY OFFICE (USE ONLY)

PERSONNEL _____ REFERENCE NO. 26 N SHEET 12 OF 25
 NOTES LEU DATE 8/19/14 ROUTE SR 65
 H.C. WESTFALL WEATHER SUNNY COUNTY WOOD
 R.C. RHOADES TEMP. 72° TOWNSHIP PERRYSBURG
 _____ SECTION RT 64
 _____ T 7 N R 10 E

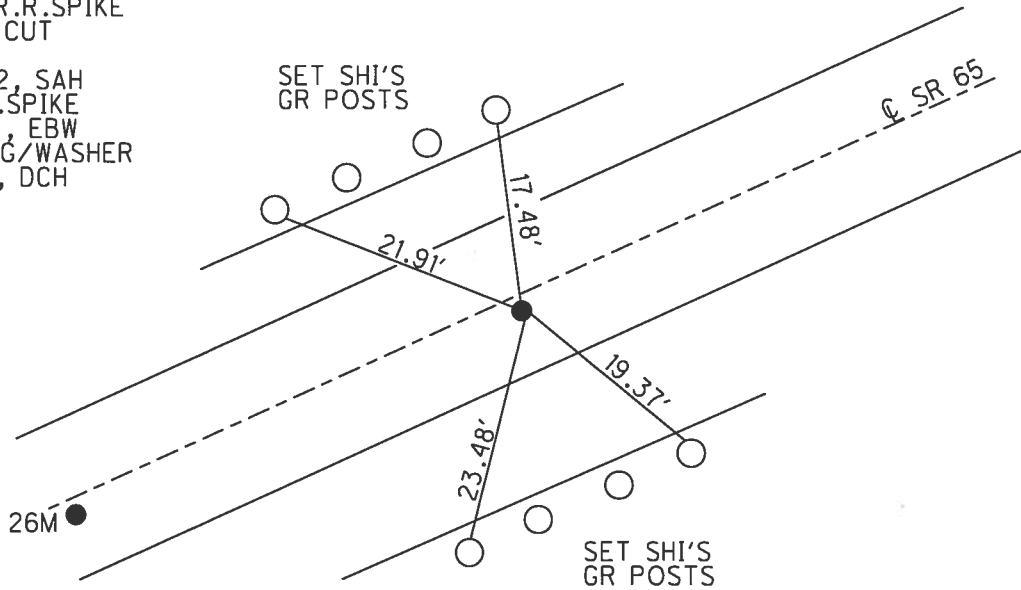
TYPE MONUMENT R.R.SPIKE
 ON SURFACE - ~~BELOW~~ ON _____
~~LEFT~~ - CL PAV'T - RIGHT 1.7'
8.3' TO RT EDGE PAVEMENT
 S.L.M. 870+64.49



Grid: Northing: 687360.177 Easting: 1650491.196

RECORD: P.O.T.
 STA. 868+18.86
 FD P.K.NAIL
 5/10/84, CL
 SET P.K./WASHER
 11/5/84, CL
 PIPE CONSTRUCTION
 DESTROYED POINT
 AND TIES, 5/19/95
 FD LG.R.R.SPIKE
 W/ "+" CUT
 REFN26
 9/24/12, SAH
 FD R.R.SPIKE
 8/19/14, EBW
 SET MAG/WASHER
 6/8/17, DCH

DIST. 26M-26N= 180.61'



REF 26 M
 ORIGIN UNKNOWN
 FD LR.R.R.SPIKE
 W/ "+" CUT
 REF26
 9/24/12, SAH
 STA. 686+83.88
 N: 687281.755
 E: 1650328.498

County WOOD S.R. 65

Township PERRYSBURG

Section RT. - 64

TZN, R/OE

Personnel HOFFMAN

LOENRLE

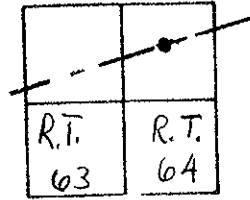
HOUSEHOLDER H.C.

BARNHISEL R.C.

Date 5-10-84

Weather CLEAR

Temp. 60°



Ref. # Z6H

PT. "A" = Fd P.K. @ surface
 1.8' RT. of & PAWT
 7.8' TO RT. EP
 11.6' TO LT. EP

RECORD;

P.O.T. = STA 868+12.92

SET PK/WASHER
 @ BOTH POINTS
 11-5-84
 S.W.H.

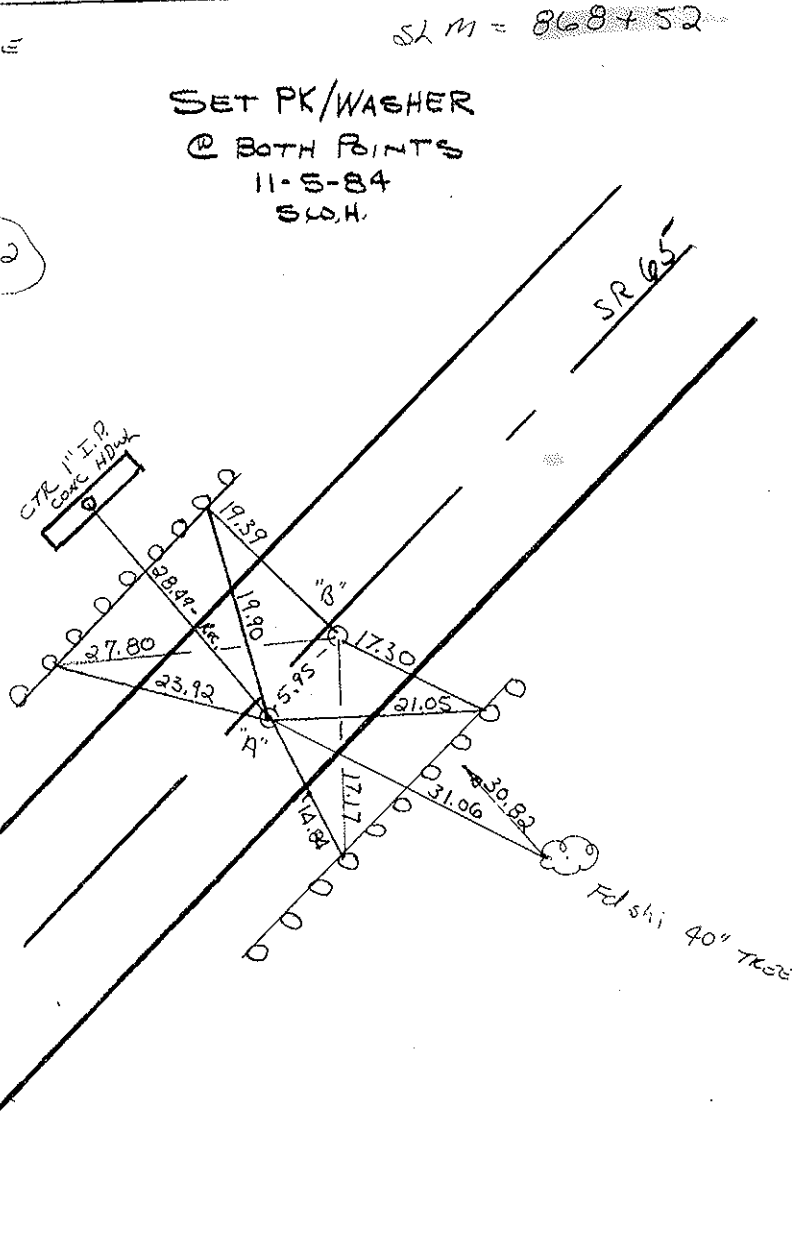
PT. "B" = Fd P.K. @ surface
 1.8' RT. of & PAWT
 7.8' TO RT. EP
 11.6' TO LT. EP

RECORD;

P.O.T. STA = 868+18.86

THESE POINTS & TIES
 WERE all destroyed
 with pipe removal.

5-19-95



SLM = 868+52

County WOOD S.R. 65

Date 5-10-84

Township PERRYSBURG

Weather CLEAR

Section RT. - 64

Temp. 60°

TZN, R/OE

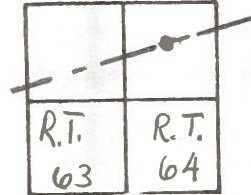
Personnel HOFFMAN

LOENRKE

HOUSEHOLDER H.C.

BARNHISEL R.C.

26-N



Ref# 26H

PT. "A" = Fd P.K. @ surface
 1.8' RT. of & Pavt
 7.8' TO RT. EP.
 11.6' TO LT. EP.

SLM = 868 + 52

SET PK/WASHER
 @ BOTH POINTS
 11-5-84
 SLO.H.

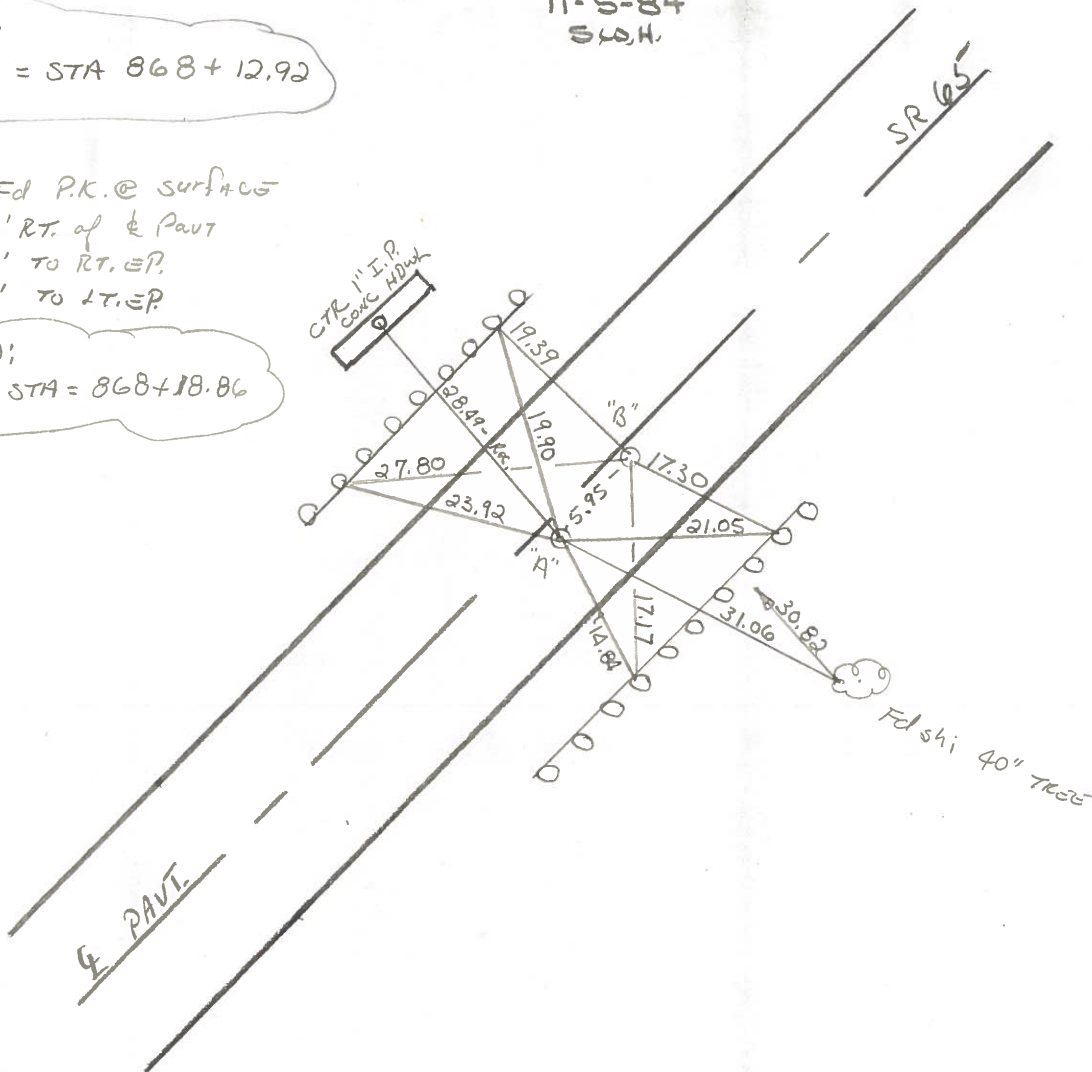
RECORD:

P.O.T. = STA 868 + 12.92

PT. "B" = Fd P.K. @ surface
 1.8' RT. of & Pavt
 7.8' TO RT. EP.
 11.6' TO LT. EP.

RECORD:

P.O.T. STA = 868 + 18.86



Q.D.O.T. DISTRICT 2 SURVEY OFFICE

Sht. ___ of ___

County Wood S.R. # 65

Date 4 Aug 80

Township Perryburg

Weather Warm

Section RT-64

Temp. 80°

T N, R E

Personnel L. Stone

R. Mehalak

P. Neusser

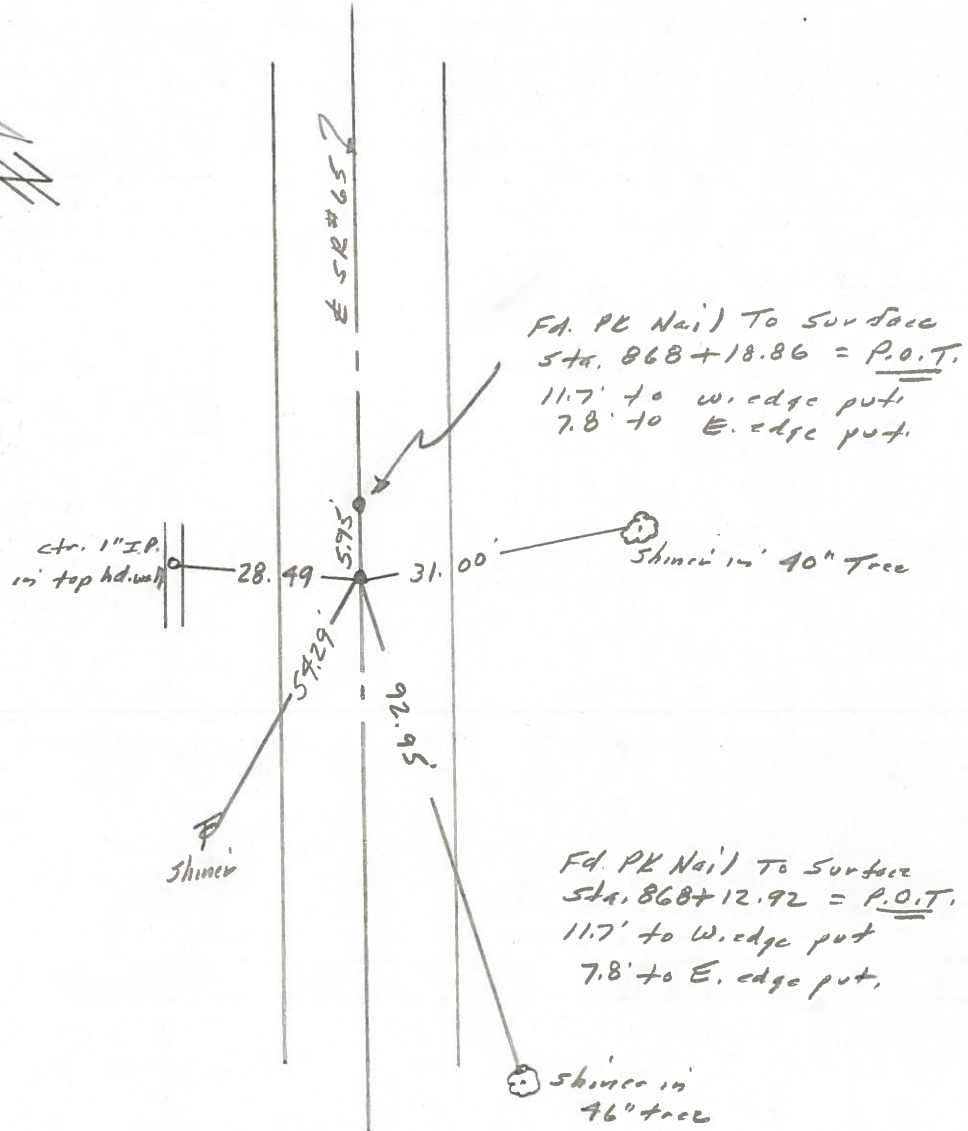
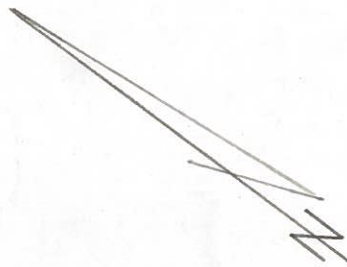
D. Curtis

26-N



26-N

Ref. No. 34



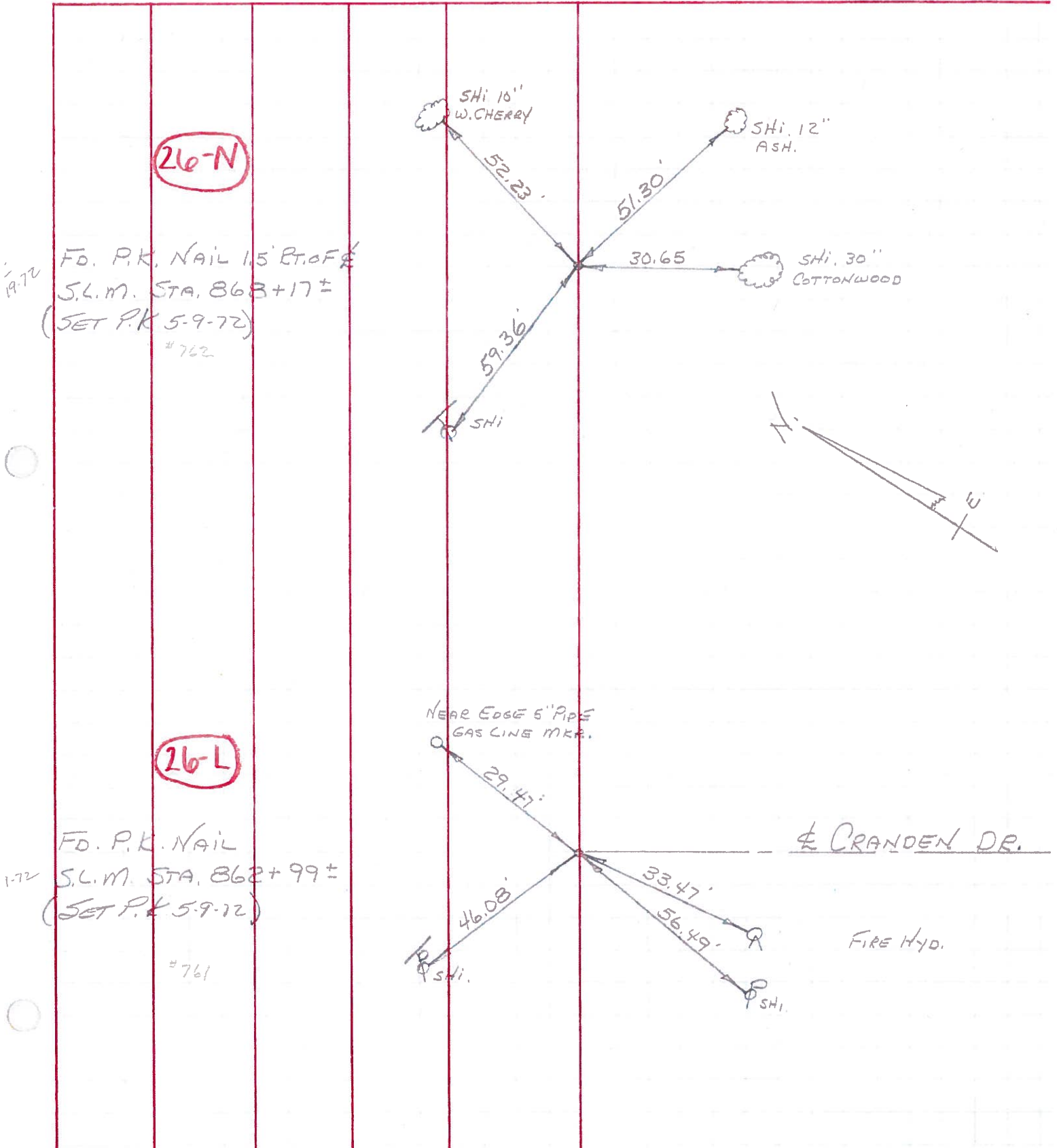
Fd. PK Nail To Surface
Sta. 868+18.86 = P.O.T.
11.7' to w. edge put
7.8' to E. edge put.

Fd. PK Nail To Surface
Sta. 868+12.92 = P.O.T.
11.7' to W. edge put
7.8' to E. edge put.

PERSONNEL	TITLE	PERSONNEL	TITLE
BURNSIDE			
SMITH			
BOWERS			
SARDEJA	E.I.T.		

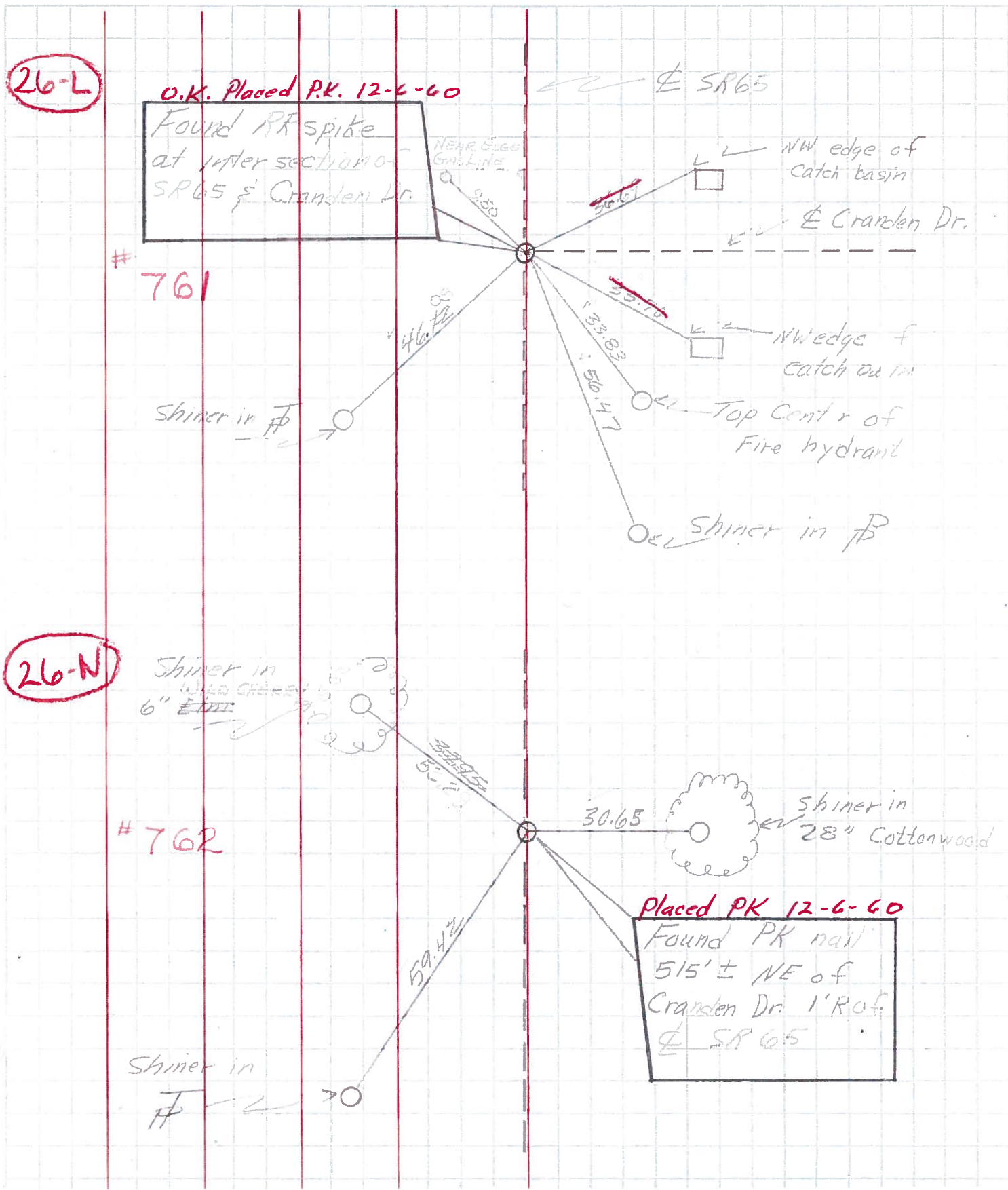
COUNTY WOOD DATE 4-30-71
 S. R. #65 WEATHER CLEAR
 SEC. PERAYSBURG TWP TEMP. +58

DESCRIPTION _____ CONTROL POINTS _____ JOB NO. _____
 LEFT CENTER LINE RIGHT



PERSONNEL	TITLE	PERSONNEL	TITLE	COUNTY	Wood	DATE	8-18-60
Delventhal				S. R.	65	WEATHER	Clear
Young				SEC.	11.96-17.65	TEMP.	80's

DESCRIPTION CONTROL POINTS LEFT CENTER LINE RIGHT JOB NO.



26-L

O.K. Placed P.K. 12-6-60
 Found PK spike
 at intersection of
 SR 65 & Cranden Dr.

761

26-N

Shiner in
 WILD CHERRY
 6" diam

762

Placed PK 12-6-60
 Found PK nail
 515' ± NE of
 Cranden Dr. 1' ROF
 & SR 65