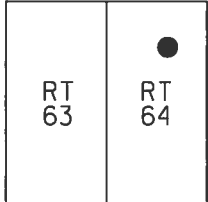


**O.D.O.T. DISTRICT 2 SURVEY OFFICE (USE ONLY)**

PERSONNEL \_\_\_\_\_ REFERENCE NO. 26 P SHEET 13 OF 25  
 NOTES LEU DATE 8/19/14 ROUTE SR 65  
 H.C. WESTFALL WEATHER SUNNY COUNTY WOOD  
 R.C. RHOADES TEMP. 72° TOWNSHIP PERRYSBURG  
 SECTION RT 64  
 T 7 N R 10 E

TYPE MONUMENT P.K./WASHER  
 ON SURFACE - ~~BELOW~~ ON \_\_\_\_\_  
~~LEFT~~ - CL PAV'T - RIGHT 2.5'  
7.4' TO RT EDGE PAVEMENT  
 S.L.M. 873+08.44



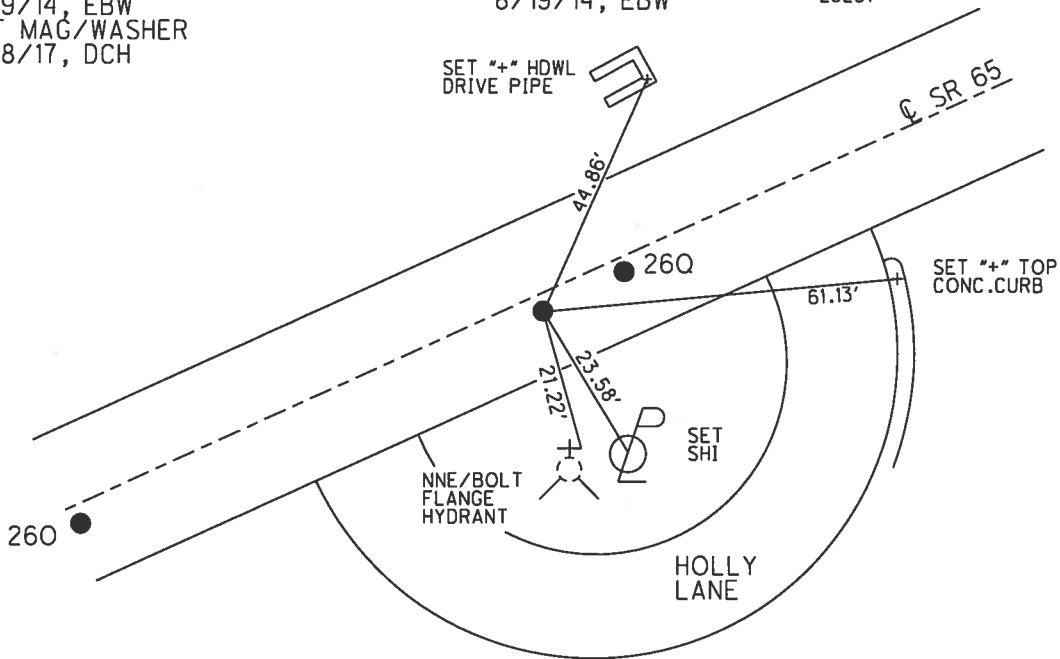
Grid: Northing: 687465.901 Easting: 1650711.042

RECORD:  
 STA. 871+02  
 FD CONC.NAIL  
 5/10/84, SAH  
 SET P.K./WASHER  
 8/15/95, CL  
 FD P.K./WASHER  
 REFP26  
 9/24/12, SAH  
 FD P.K./WASHER  
 REF126  
 8/19/14, EBW  
 SET MAG/WASHER  
 6/18/17, DCH

REF 26 O  
 ORIGIN UNKNOWN  
 FD LR.R.R.SPIKE  
 W/ "+" CUT  
 REFO26  
 9/24/12, SAH  
 STA.871+98.46  
 N: 687418.278  
 E: 1650611.904

REF 26 Q  
 ORIGIN UNKNOWN  
 FD LR.R.R.SPIKE  
 W/ "+" CUT  
 REFQ26  
 9/24/12, SAH  
 STA.873+18.55  
 N: 687470.305  
 E: 1650720.142  
 FD R.R.SPIKE  
 REF101  
 8/19/14, EBW

DRIVE RES.  
 #28291



DIST. 260-26P= 109.98'  
 26P-26Q= 10.11'

# O.D.O.T. DISTRICT 2 SURVEY OFFICE

PERSONNEL \_\_\_\_\_

REFERENCE NO. 26-I

SHEET 81 OF 91

NOTES Van Nusen

H.C. Mosen

R.C. Huss

DATE 8-15-95

WEATHER Clay, Mild

TEMP. +55° F

ROUTE 65

COUNTY Wood

TOWNSHIP Perrysburg

SECTION RT-64

T 7 N R 10 E

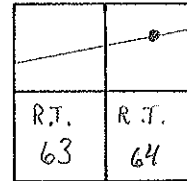
TYPE MONUMENT PK/Washer

ON SURFACE - BELOW on surface

NEPT - C PAV'T. - RIGHT 2.4' RT of C

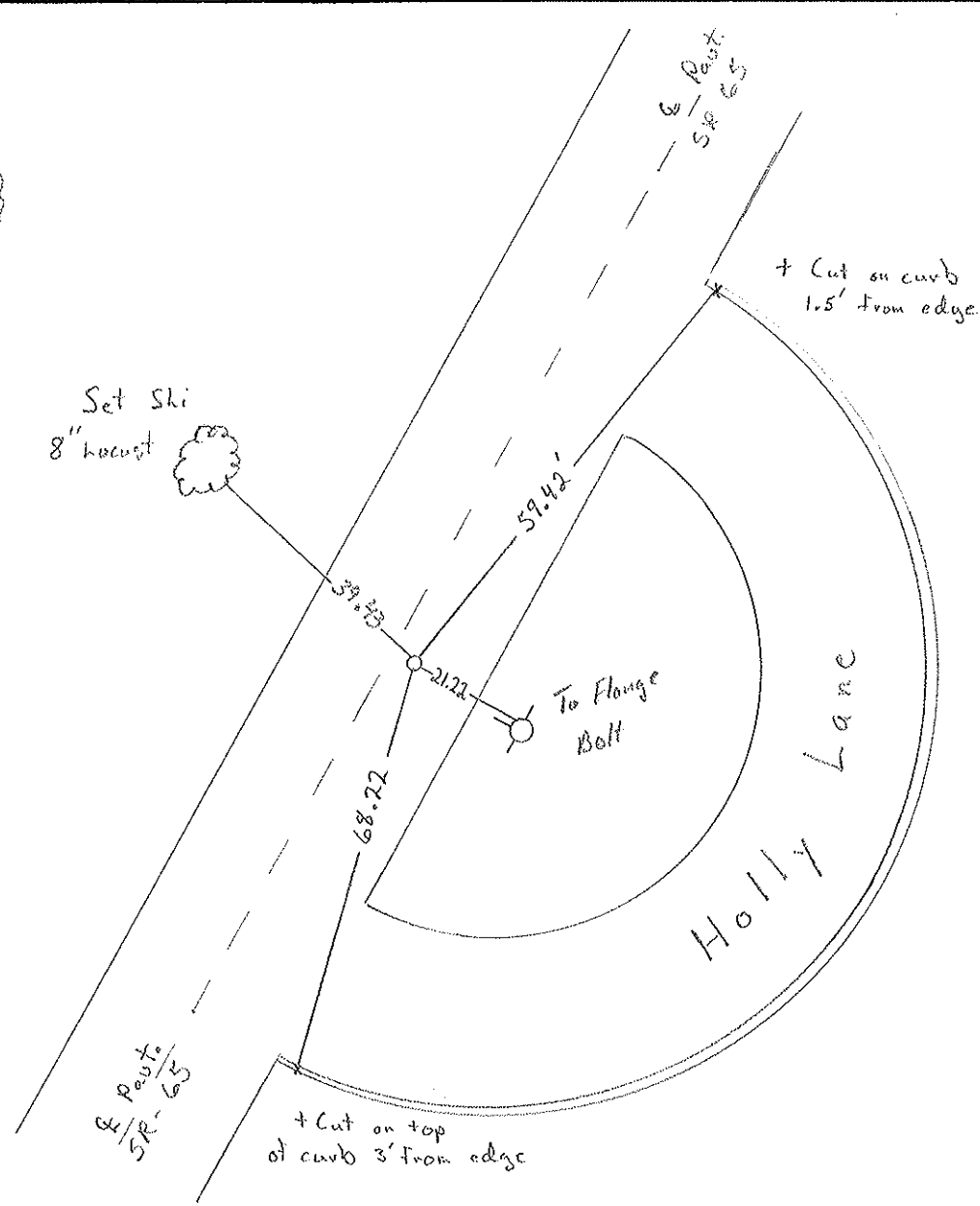
7.8' TO RT EDGE PAVEMENT

S.L.M. 871+02



Set PK/Washer  
8-15-95 C.L.

Record  
Fd Conc. Nail on surface  
2.3' RT of past.  
7.5' RT E.P. 5-10-84  
12.1' LT E.P. S.H.



County Wood S.R. 65

Township PERRYSBURG

Section RT-64

TZN, RICE

Personnel HOFFMAN

LOCHKE

HOUSEHOLDER H.C.

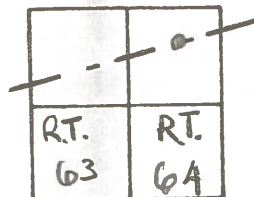
BARNHISEL R.C.

Date 5-10-84

Weather clear

Temp. 60°

26-P



26-I

SLM 871+02

Fd CONC. NAIL ON SURFACE

2.3' RT. of PAUT

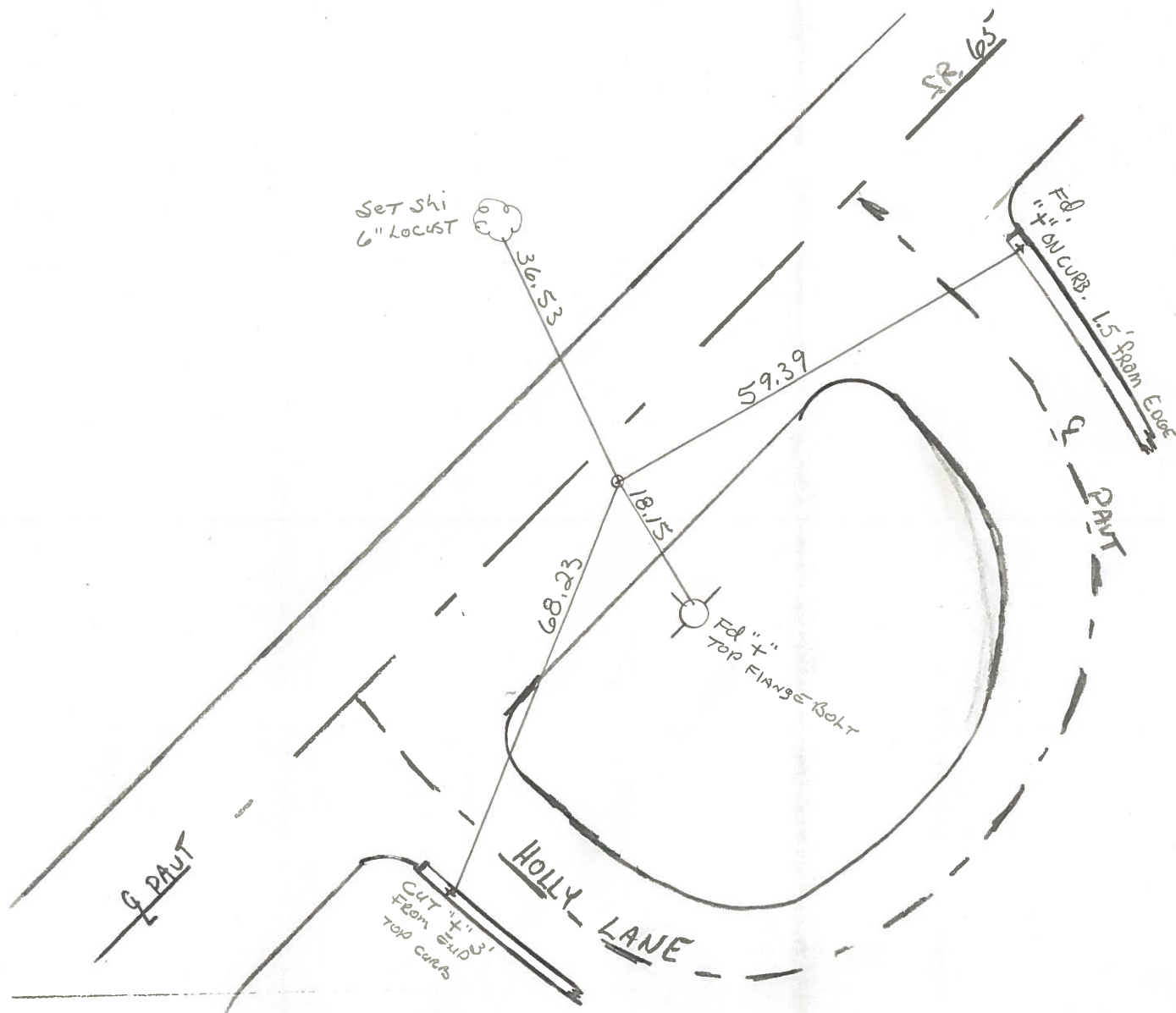
7.5' TO RT. EP

12.1' TO LT. EP

SET PK/WASHER

11-5-84

S.W.H.



County Wood S.R. # 65

Date 4 Aug. 80

Township Pennysburg

Weather Windy

Section RT-64

Temp. 80°

T\_N, R\_E

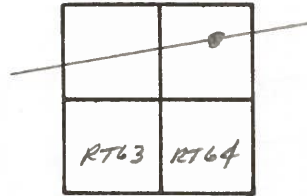
Personnel I. Stone

R. Michalek

P. Neuser

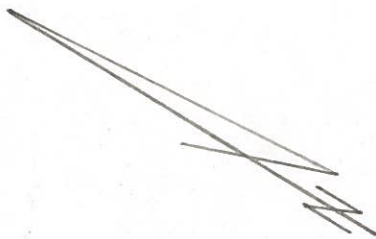
D. Curtis

26P



26-I

Ref. No. 35



Shirazi  
9" tree

31.37'

37'

SR # 65

59.37'

HOLLY

chiseled +  
on curb 1.5' from edge

" + N. Bolt  
E. Hyd.

18.16'

LANE

Fd. PK Nail To Surface  
Sta. 870 + 62.94 = P.O.T.  
7.7' to E. Edge put  
11.8' to W. Edge put.