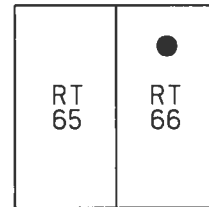


**O.D.O.T. DISTRICT 2 SURVEY OFFICE (USE ONLY)**

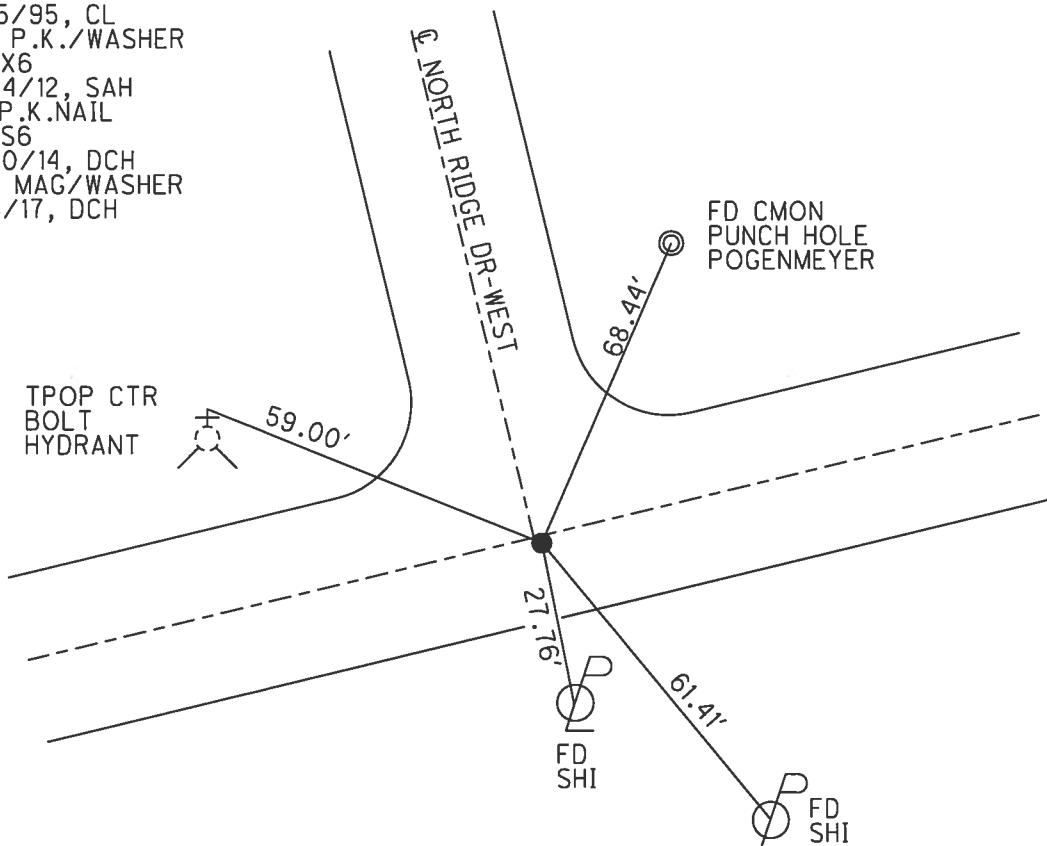
PERSONNEL \_\_\_\_\_ REFERENCE NO. 26 X SHEET 22 OF 25  
 NOTES LEU DATE 8/20/14 ROUTE SR 65  
 H.C. WESTFALL WEATHER PTLY CLOUDY COUNTY WOOD  
 R.C. HOMAN TEMP. 80° TOWNSHIP PERRYSBURG  
 SECTION RT 66  
 T 7 N R 10 E

TYPE MONUMENT P.K.NAIL  
 ON SURFACE - ~~BELOW~~ ON  
~~LEFT~~ - Q PAV'T - RIGHT 0.4'  
11.6' TO RT EDGE PAVEMENT  
 S.L.M. 909+81.10

Grid: Northing: 688073.128 Easting: 1654204.500



RECORD:  
 FD P.K./WASHER  
 5/18/95, SAH  
 SET P.K./WASHER  
 8/15/95, CL  
 FD P.K./WASHER  
 REF X6  
 9/24/12, SAH  
 FD P.K.NAIL  
 REF S6  
 8/20/14, DCH  
 SET MAG/WASHER  
 6/8/17, DCH



# O.D.O.T. DISTRICT 2 SURVEY OFFICE

PERSONNEL \_\_\_\_\_

REFERENCE NO. \_\_\_\_\_

SHEET 88 OF 91

NOTES Huss

H.C. Mason

R.C. Van Dusen

DATE 5-18-95

WEATHER Cloudy

TEMP. +55° F

ROUTE SR 65

COUNTY Wood

TOWNSHIP Perrysburg

SECTION RT 66

T 7 N R 10 E

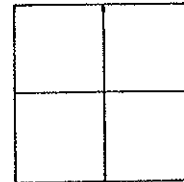
TYPE MONUMENT PK/Washer

ON SURFACE - BELOW on surface

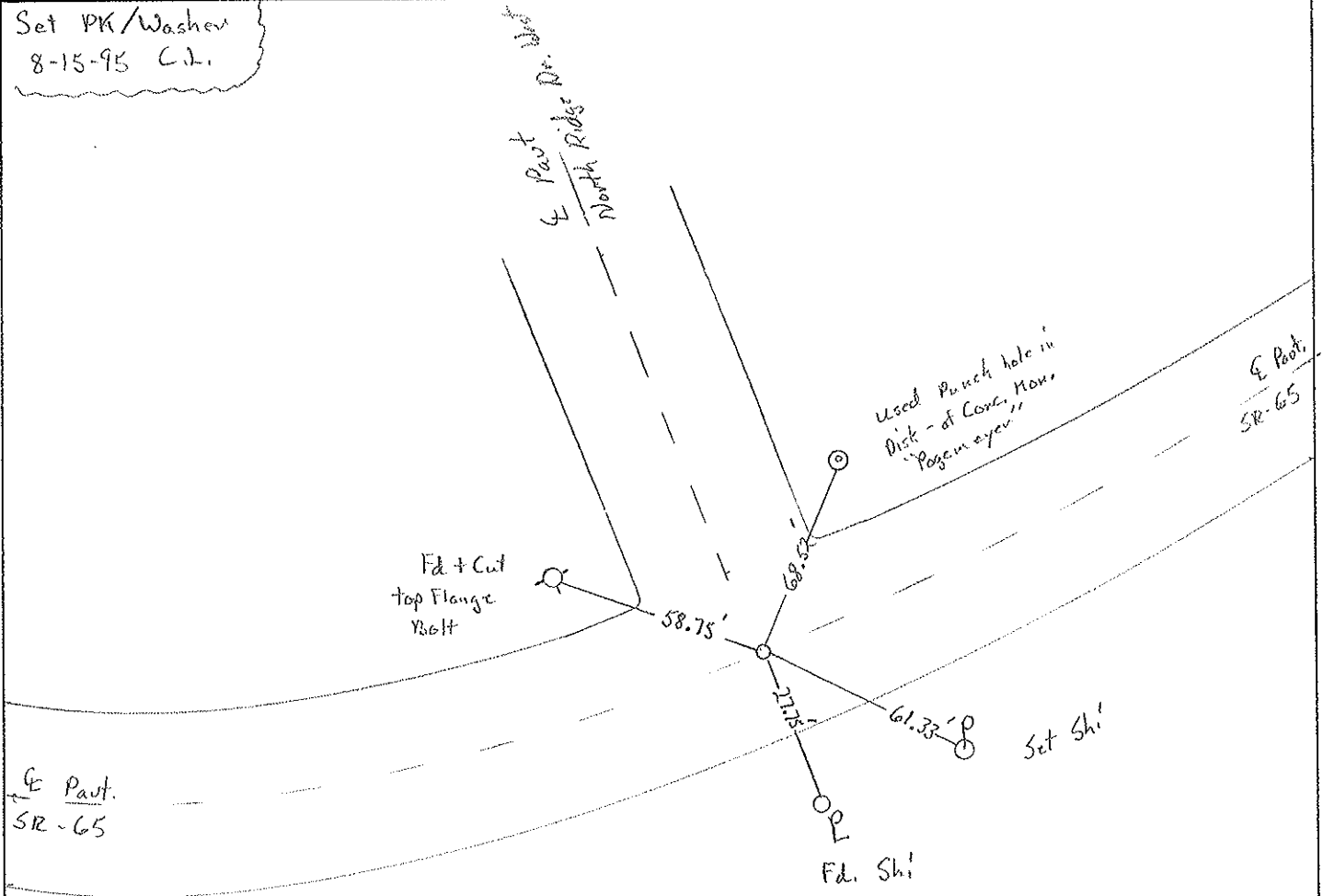
WEST - E PAV'T - RIGHT

11.3 TO RT EDGE PAVEMENT

S.L.M. 905174



Set PK/Washer  
8-15-95 C.L.



(Record)

Fd PK at surface set by Pagemeyer / also PK on either side of main pt. S.H. 5-11-84

County Wood S.R. 65

Date 5-11-84

Township Perryburg

Weather P. CLEAR

Section RT. 66

Temp. 60°

T7N, R10E

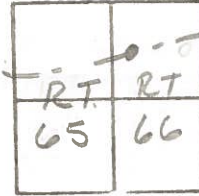
Personnel KOFFMAN

LOEHRE

HOUSEHOLDER H.C.

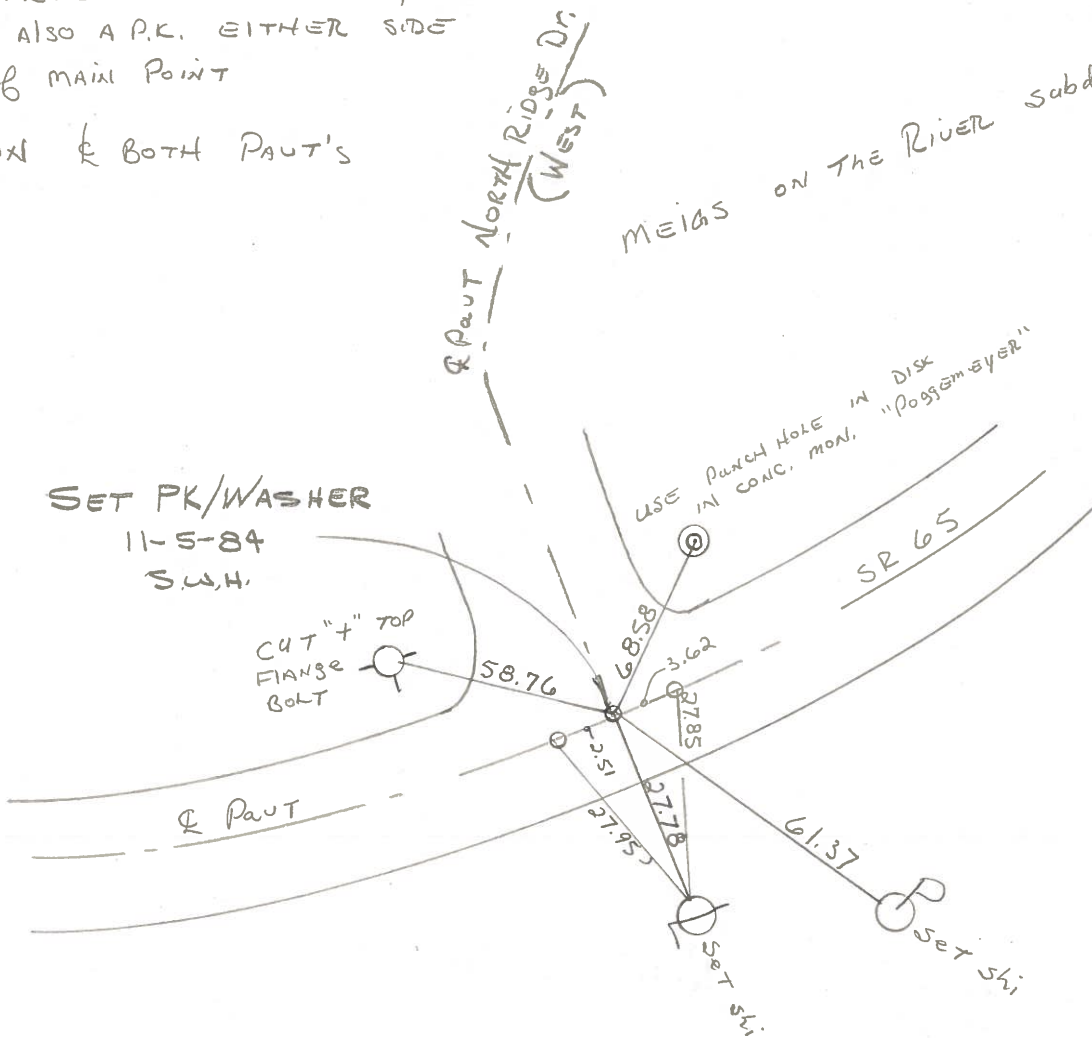
BARNHISEL R.C.

26-X



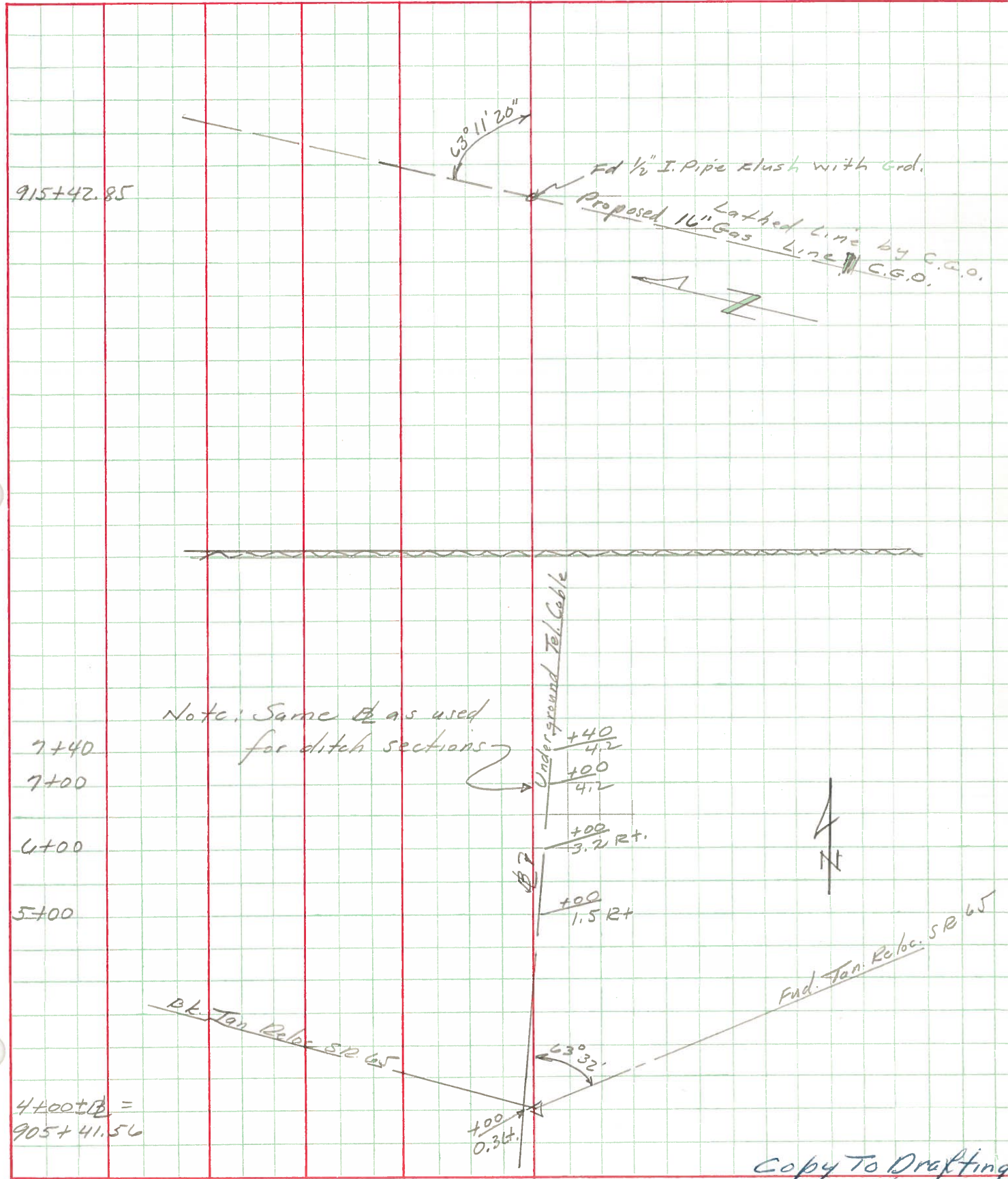
Fd P.K. @ surface set by L. Possemeyer  
 & ALSO A P.K. EITHER SIDE  
 of MAIN POINT  
 ON & BOTH PAUT'S

S.M. = 905 + 74



PERSONNEL	TITLE	PERSONNEL	TITLE	COUNTY	DATE
Radzimascki	M			Wood	11-9-68
Michalak	H.C.			S. R. 65	WEATHER clear-cold
Beck	RC.			SEC. Ft. Meigs	TEMP. 25°
Schroder	P				JOB NO. 02466

DESCRIPTION Additional Topo-Utilities LEFT CENTER LINE RIGHT



Copy To Drafting  
12/10/68