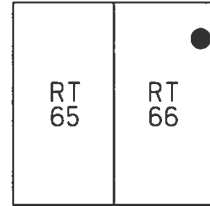


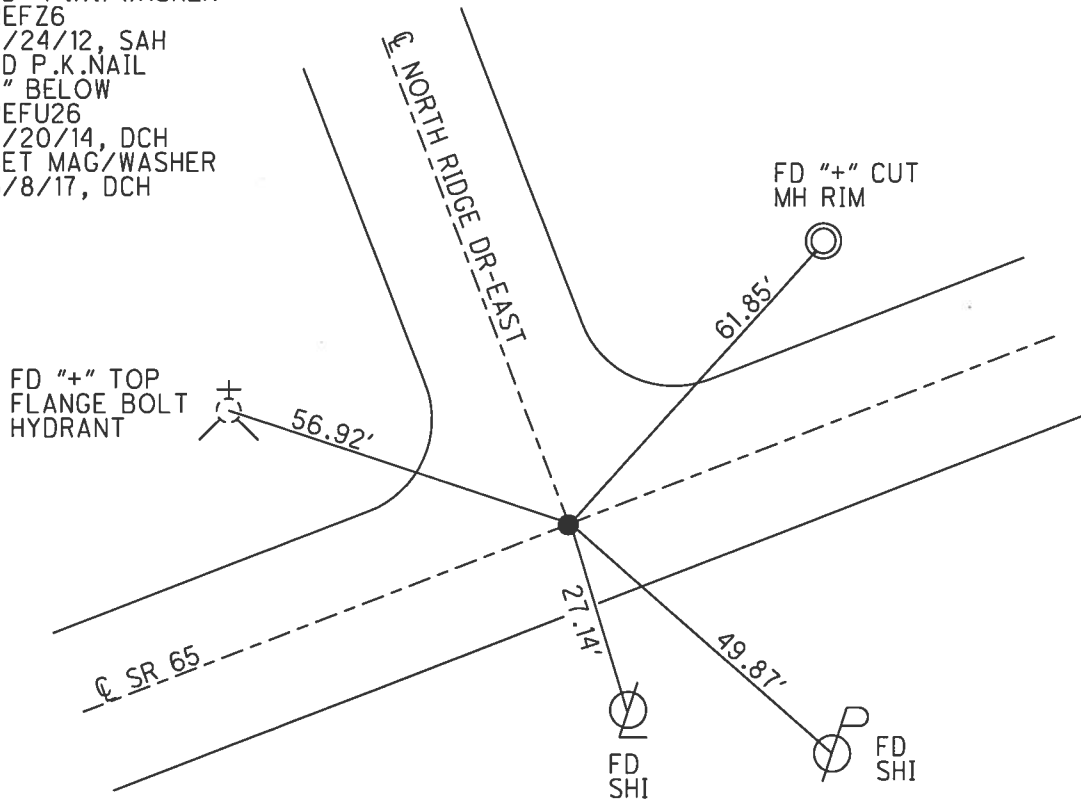
O.D.O.T. DISTRICT 2 SURVEY OFFICE (USE ONLY)

PERSONNEL _____ REFERENCE NO. 26 Z SHEET 24 OF 25
 NOTES LEU DATE 8/20/14 ROUTE SR 65
 H.C. WESTFALL WEATHER PTLY CLOUDY COUNTY WOOD
 R.C. HOMAN TEMP. 80° TOWNSHIP PERRYSBURG
 _____ SECTION RT 66
 _____ T 7 N R 10 E

TYPE MONUMENT P.K.NAIL
~~ON SURFACE~~ - BELOW 3"
 LEFT - ☉ PAV'T - RIGHT ON
11.9' TO RT EDGE PAVEMENT
 S.L.M. 916+82.83
 Grid: Northing: 688347.553 Easting: 1654849.036



RECORD:
 FD P.K./WASHER
 5/18/95, SAH
 SET P.K./WASHER
 8/15/95, CW
 FD P.K./WASHER
 REFZ6
 9/24/12, SAH
 FD P.K.NAIL
 3" BELOW
 REFU26
 8/20/14, DCH
 SET MAG/WASHER
 6/8/17, DCH



O.D.O.T. DISTRICT 2 SURVEY OFFICE

PERSONNEL

REFERENCE NO. Z 26 SHEET 90 OF 91

NOTES VAN DUSEN

H.C. MOSER

R.C. VAN DUSEN

PHUSS

DATE 5-18-95

WEATHER CLOUDY

TEMP. +55° F

ROUTE SR 65

COUNTY WOOD

TOWNSHIP PERRYBORO

SECTION _____

T 7 N R 10 E

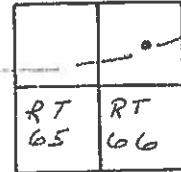
TYPE MONUMENT PK/WASHER

ON SURFACE - BELOW SURFACE

LEFT- ☉ PAV'T. - RIGHT ☉

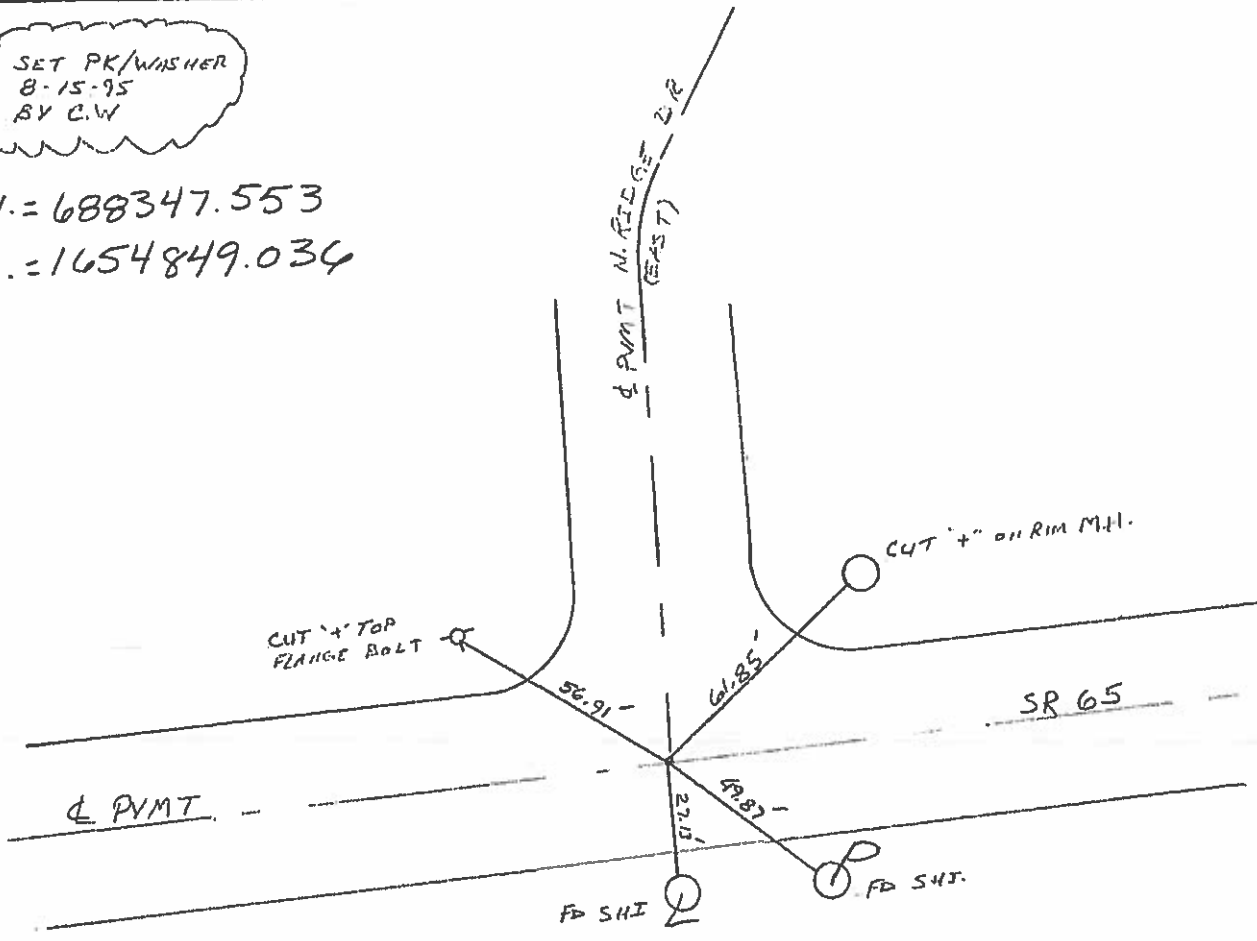
11.9 TO RT EDGE PAVEMENT

S.L.M. 919+78



SET PK/WASHER
 8-15-95
 BY C.W.

N. = 688347.553
 E. = 1654849.034



County Wood S.R. 65

Township Perrysburg

Section RT 66

T2N, R10E

Personnel HOFFMAN

LOEHLKE

HOUSEHOLDER H.C.

BARNTISEL R.C.

Date 5-11-84

Weather P. CLEAR

Temp. 60°

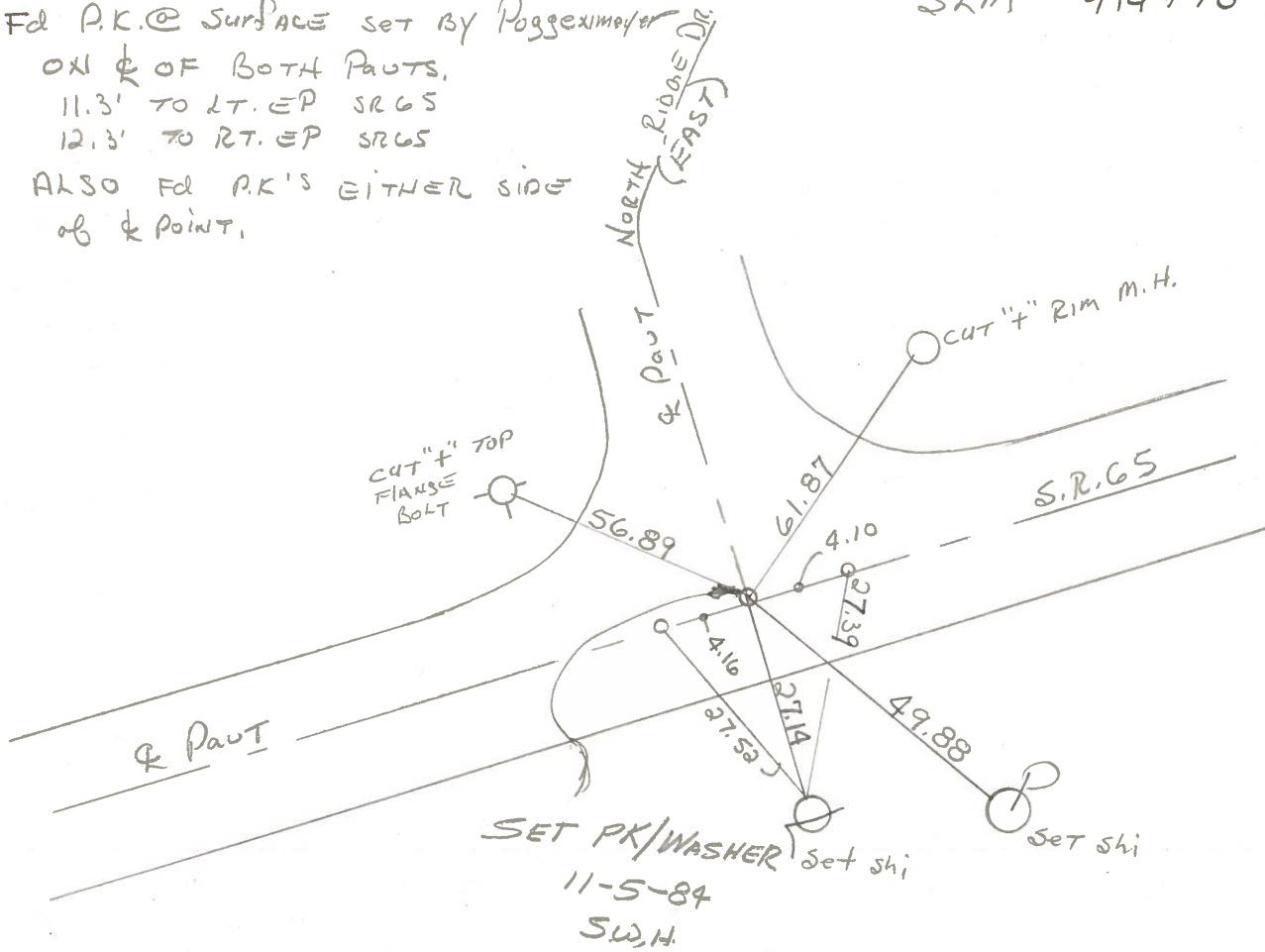
26-2

RT 65	RT 66



Fd P.K. @ SURFACE set BY Poggenmeyer
 ON L & OF BOTH PAUTS.
 11.3' TO LT. EP SR65
 12.3' TO RT. EP SR65
 ALSO Fd P.K.'S EITHER SIDE
 of & POINT.

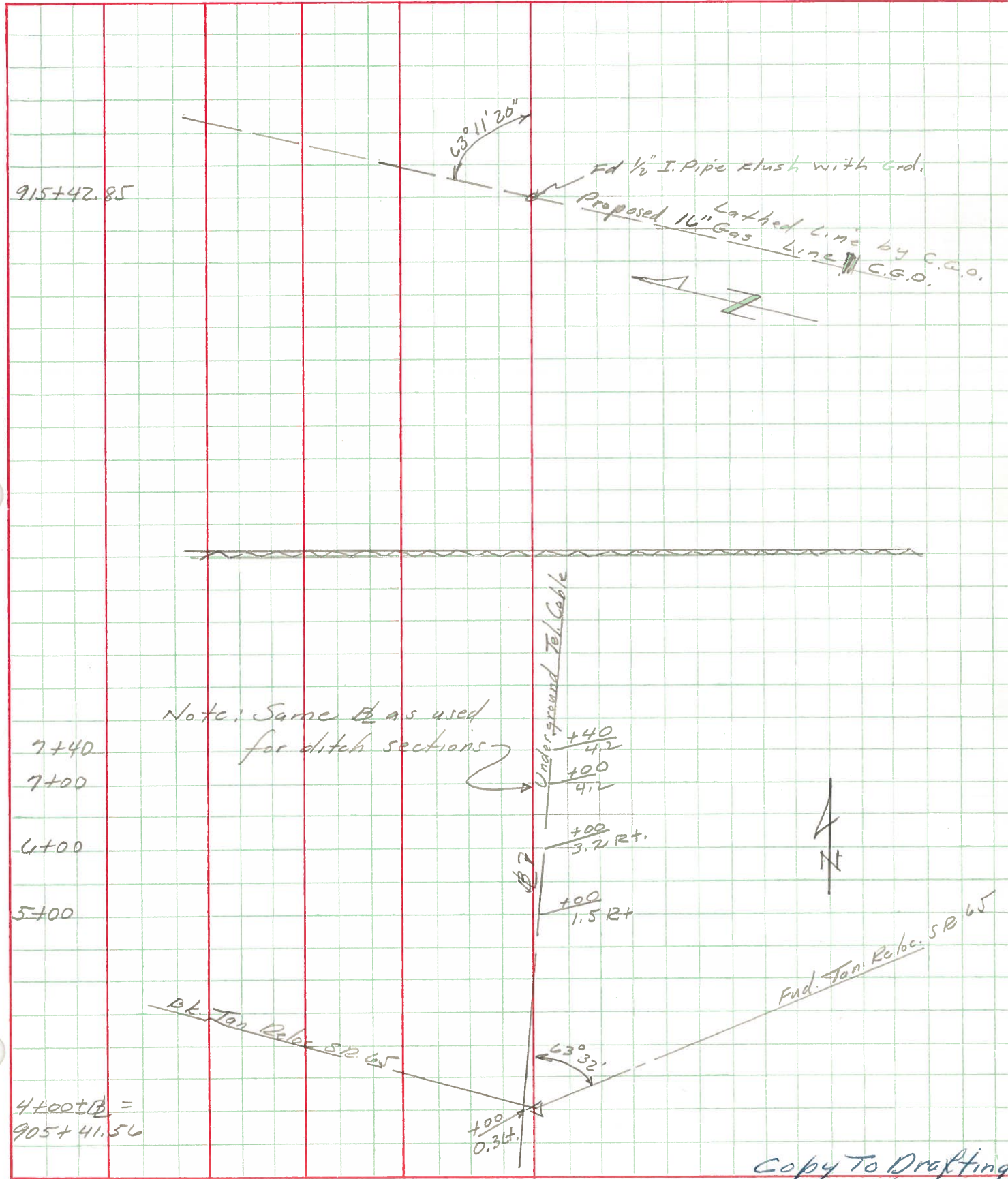
SLM 914+78



SET PK/WASHER
 11-5-84
 S.W.H.

PERSONNEL	TITLE	PERSONNEL	TITLE	COUNTY	DATE
Radzimascki	M			Wood	11-9-68
Michalak	H.C.			S. R. 65	WEATHER clear-cold
Beck	RC.			SEC. Ft. Meigs	TEMP. 25°
Schroder	P				JOB NO. 02466

DESCRIPTION: Additional Topo-Utilities



Copy To Drafting
12/10/68