

O.D.O.T. DISTRICT 2 SURVEY OFFICE (USE ONLY)

PERSONNEL

REFERENCE NO. 29

SHEET 1 OF 9

NOTES LOEHRKE

DATE 6/4/85

ROUTE SR 65

H.C. BARNHISEL

WEATHER CLEAR

COUNTY WOOD

R.C. HOFFMAN

TEMP. 70°

TOWNSHIP PERRYSBURG

DWG BY NIESE PID _____

SECTION 12 MILE RESERVE
T 4 US

TYPE MONUMENT LG.R.R.SPIKE

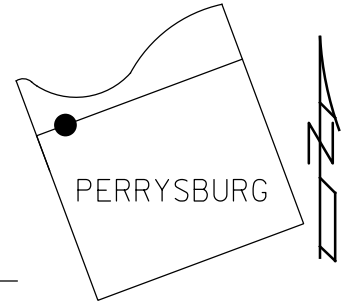
~~ON SURFACE~~ - BELOW 1"

OFFSET \odot PAVEMENT 8.4' LT : ~~RT~~
6.1' TO LT EDGE PAVEMENT

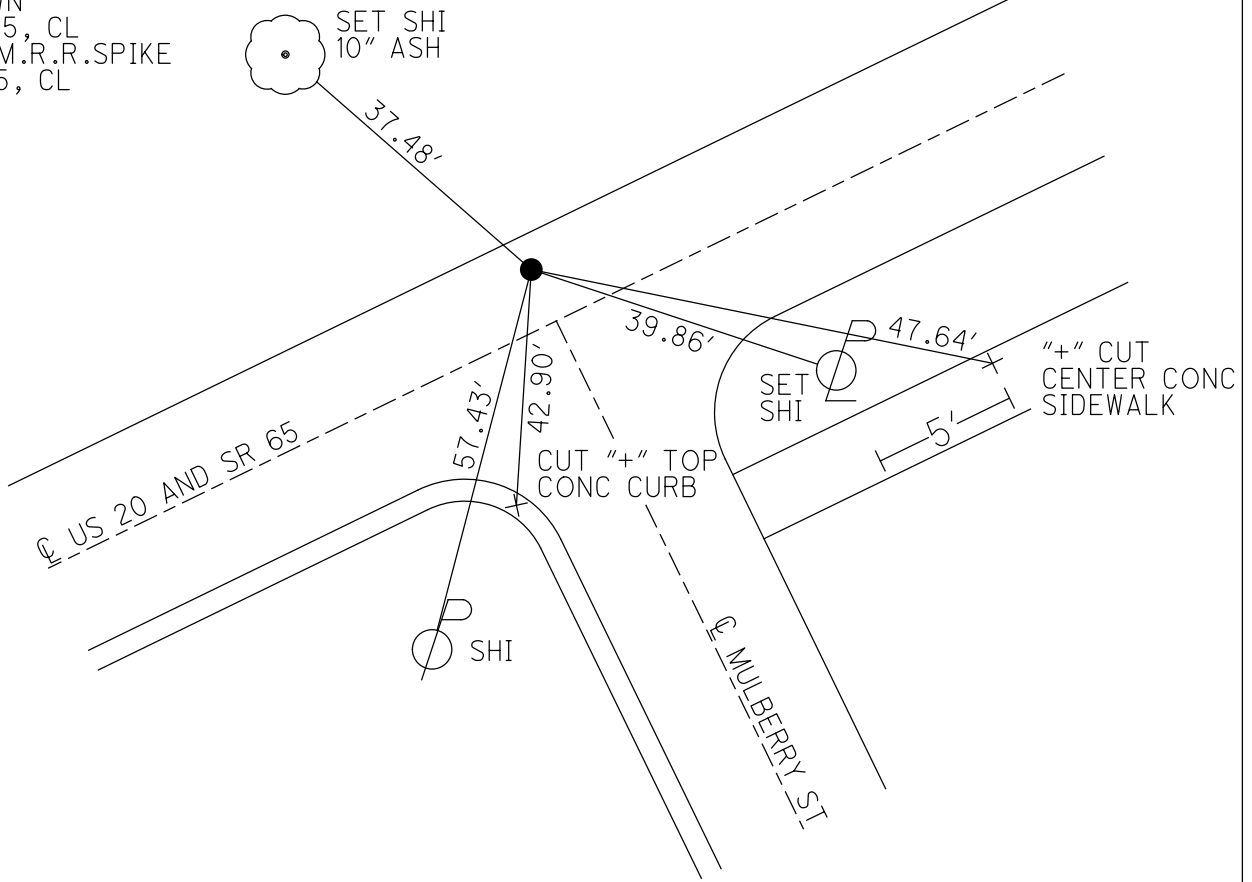
STATION: 941+89

HORZ.DATUM: _____ GEOID: _____

GRID: NORTHING: _____ EASTING: _____



RECORD:
US 20 SLM 34+39
FD LG.R.R.SPIKE
1" DOWN
6/4/85, CL
SET SM.R.R.SPIKE
7/1/85, CL



County WOOD S.R. 65 & US 20

Date 6-4-85

Township PERRYSBURG, C.T.Y

Weather CLEAR

Section _____

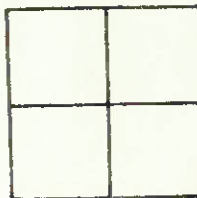
Temp. +70

T N, R E

Personnel LOHRKE

Hoffman

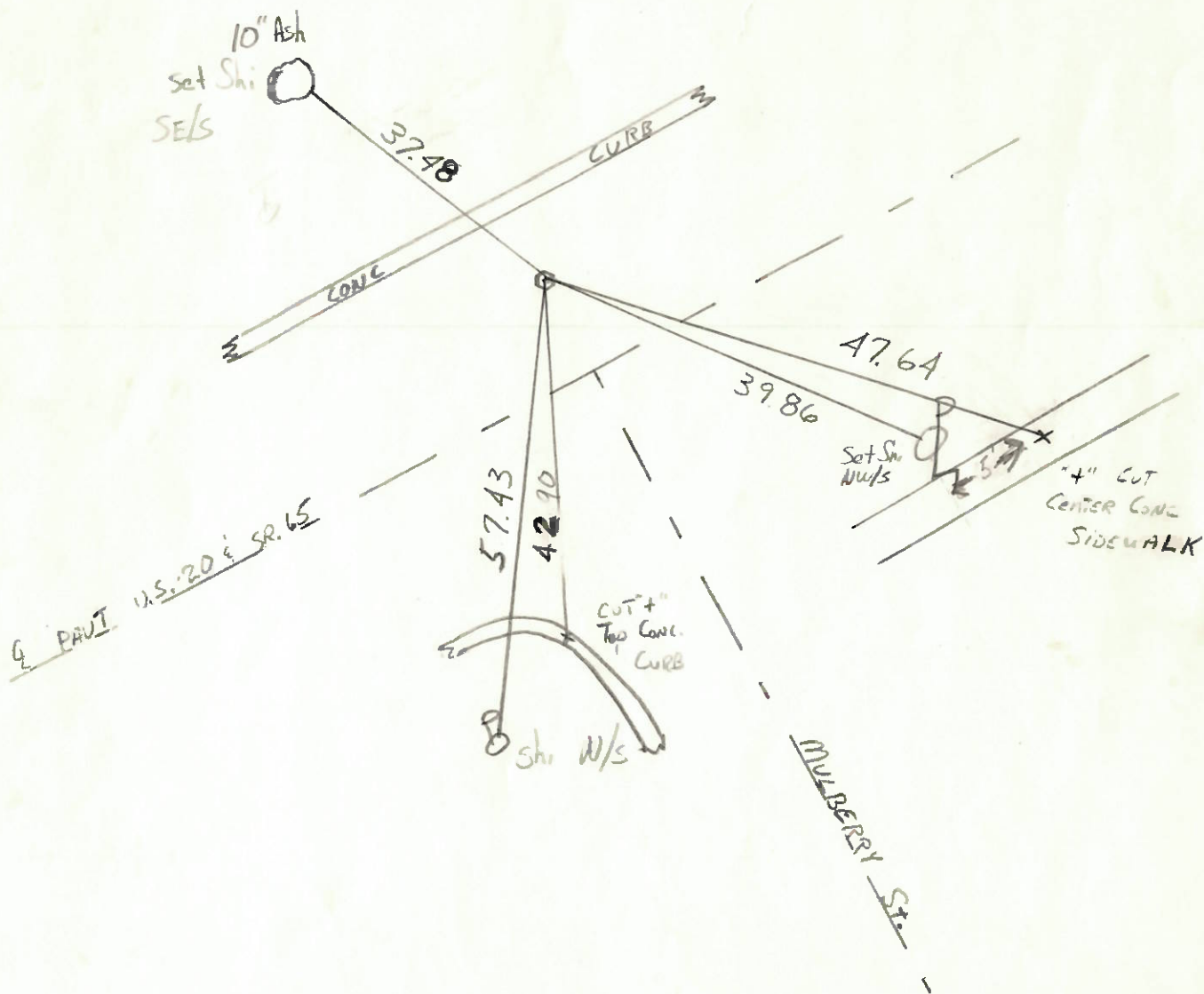
BARNHISEL



8.4 Lf Q PAUT S.R. 65
ON Q PAUT MULBERRY ST
6.1 to Lf Edge

Set Sm R.P. Spike
7-1-85
C.L.

SLM 34+39
Fd: Lg. R.R Spike
1" BELOW SURFACE



O.D.O.T. DISTRICT 2 SURVEY OFFICE

Sht. 2 of 20
S.R. 65

County WOOD

Date 7-31-78

Township PERRYSBURG

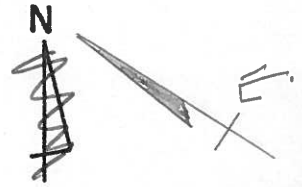
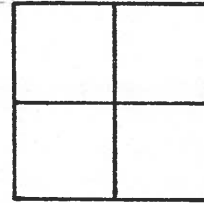
Weather PT. CLOUDY

Section _____

Temp. + 70°

T N, R E

Personnel BURNSIDE



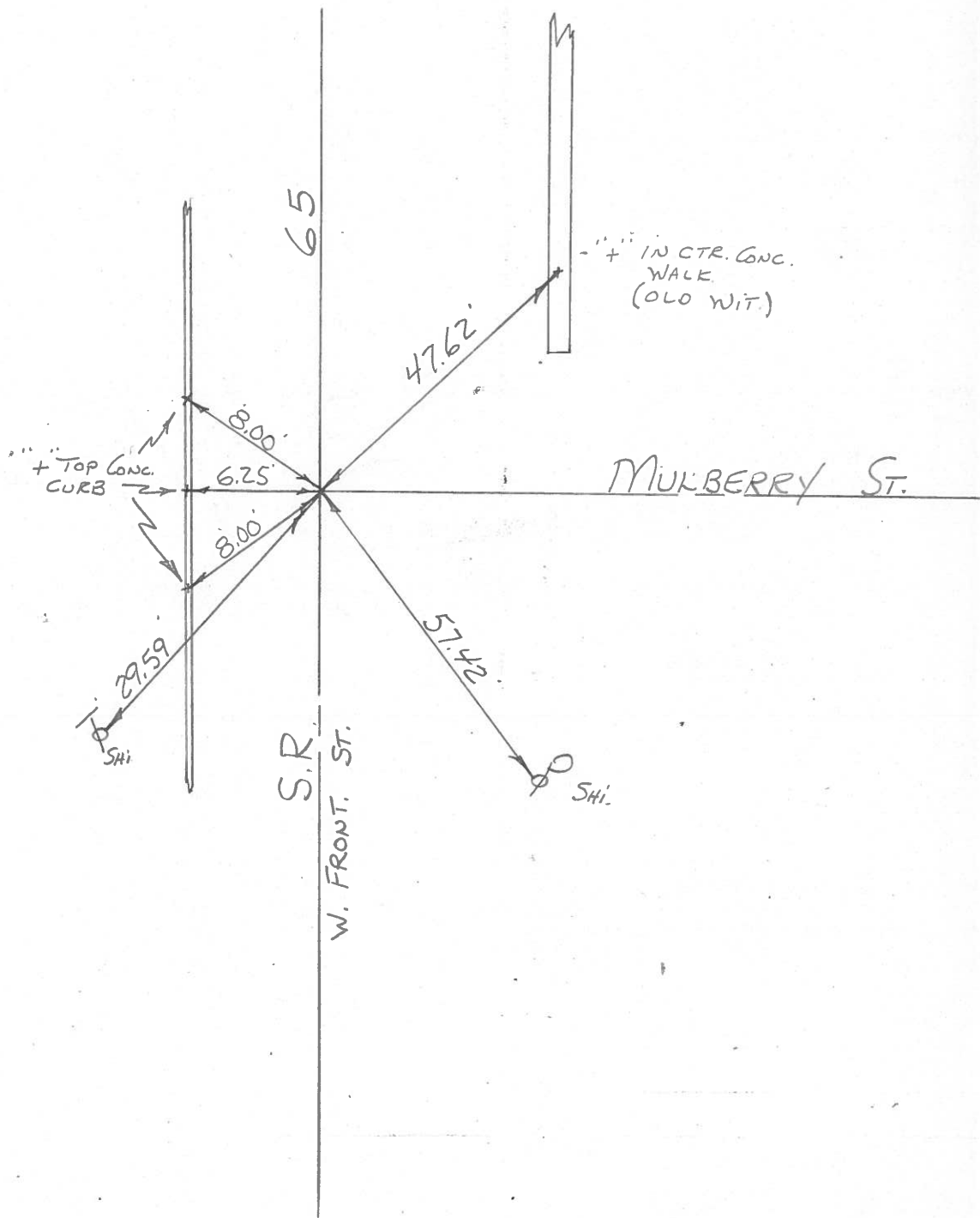
SMITH

BOWERS

KNAPE

MEAD

Fd. R.R. Spk.
@ SURFACE



PERSONNEL TITLE PERSONNEL TITLE

COUNTY Wood DATE 8-25-65

Silvester

S. R. 65 WEATHER _____

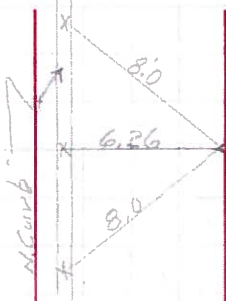
SEC. _____ TEMP _____

DESCRIPTION Perrysburg JOB NO. _____

LEFT CENTER LINE RIGHT

@ front of Main Perry St.

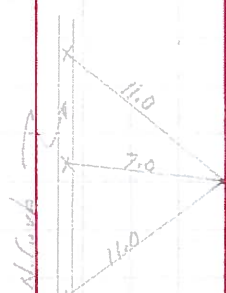
City
R.E. Spk.
8-23-65



from old wit.
found 2" iron Bolt with + on top 5" below Sur.
Set new ties to xs on N. Curb

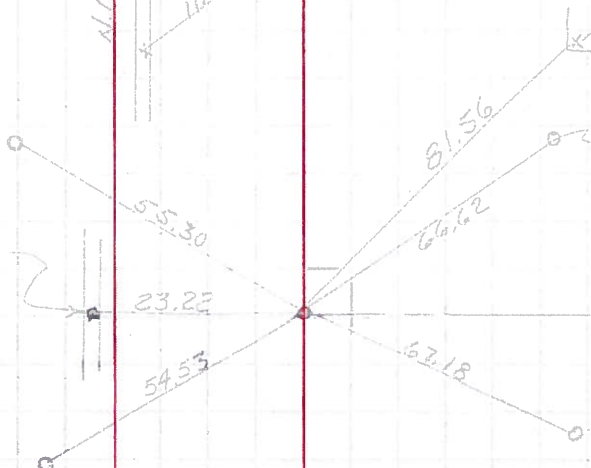
@ front of Pine St.

City
R.E. Spk.
8-13-65



found iron Pipe 1' below Surface
Set new ties to xs on top N. Curb.

Near edge steel S&L Pole
1' above ground



Near Edge Steel S&L Pole
1' above ground

Ed iron Pin Front of Louisiana Ave
4" below Surface

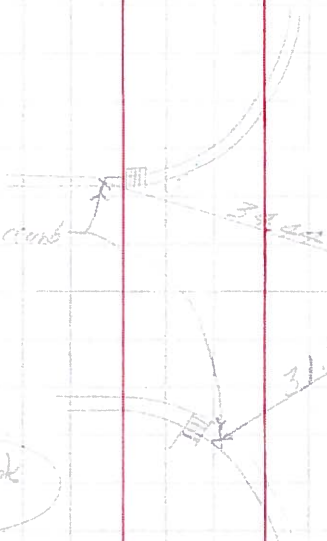
Replaced R.E. Spk
8-24-65

Near Edge Steel S&L Pole
1' above ground

Shim in N. Curb

Front of Elm St.
Ed iron Pin
1" below Surface

Replaced R.E. Spk
8-24-65



in walk in tree

Elm St

PERSONNEL TITLE PERSONNEL TITLE

COUNTY Wood DATE 7/6/65

S. R. 65 WEATHER _____

Crew SEC. _____ TEMP. _____

DESCRIPTION LEFT CENTER LINE RIGHT JOB NO. _____

