

O.D.O.T. DISTRICT 2 SURVEY OFFICE (USE ONLY)

PERSONNEL

REFERENCE NO. 29 A

SHEET 2 OF 9

NOTES LOEHRKE

DATE 6/4/85

ROUTE SR 65

H.C. BARNHISEL

WEATHER CLEAR

COUNTY WOOD

R.C. HOFFMAN

TEMP. 75°

TOWNSHIP PERRYSBURG

SECTION 12 MILE RESERVE

DWG BY NIESE

PID \_\_\_\_\_

T 4 US

TYPE MONUMENT LG.R.R.SPIKE

~~ON SURFACE~~ - BELOW 1"

OFFSET  $\odot$  PAVEMENT 7.5' LT : ~~RT~~

7.2' TO LT EDGE PAVEMENT

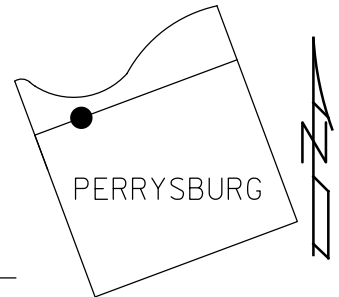
STATION: 948+34

HORZ.DATUM: \_\_\_\_\_

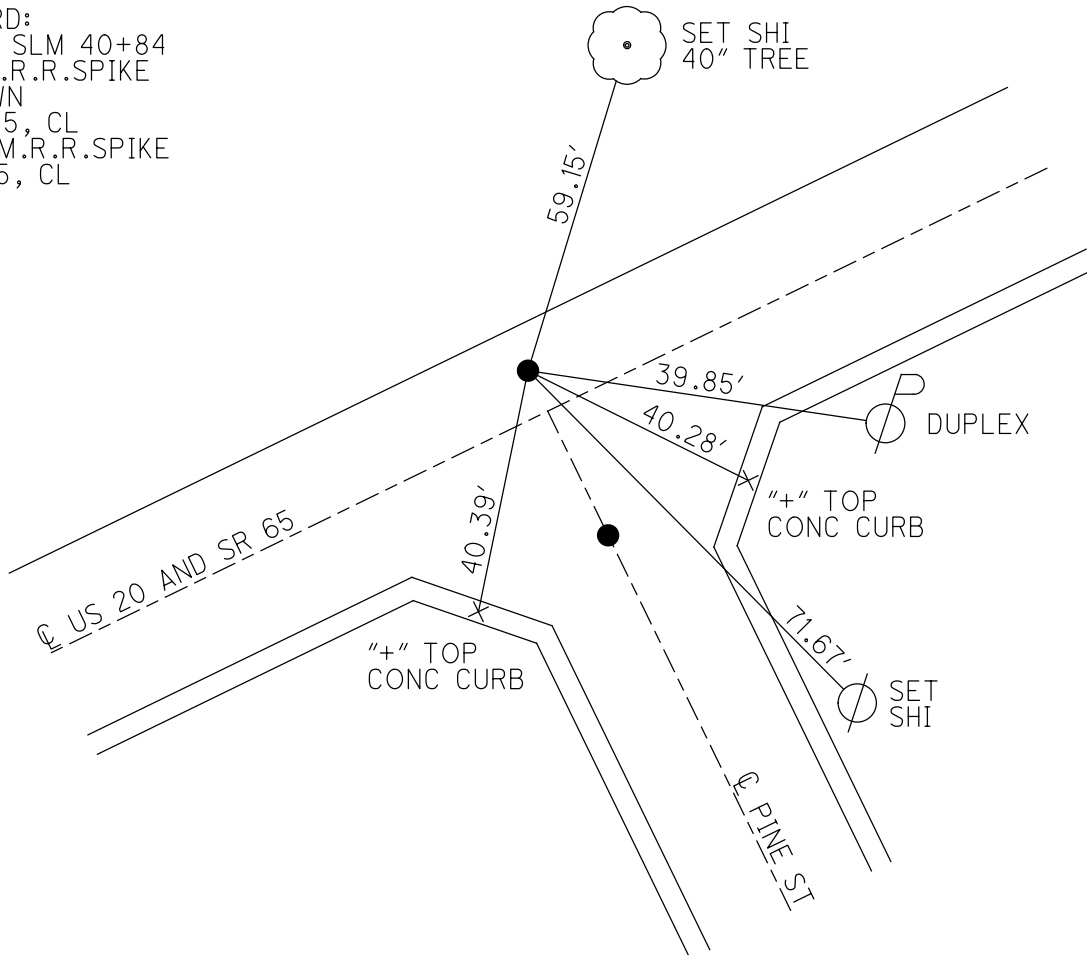
GEOID: \_\_\_\_\_

GRID: NORTHING: \_\_\_\_\_

EASTING: \_\_\_\_\_



RECORD:  
 US 20 SLM 40+84  
 FD LG.R.R.SPIKE  
 1" DOWN  
 6/4/85, CL  
 SET SM.R.R.SPIKE  
 7/1/85, CL





County WOOD

Date 7-31-78

Township PERRYSBURG

Weather PT. CLOUDY

Section \_\_\_\_\_

Temp. +70°

T    N, R    E

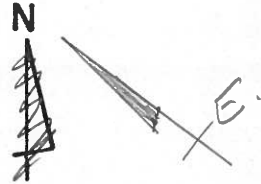
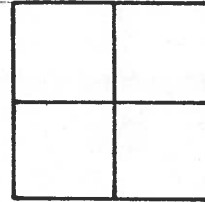
Personnel BURNSIDE

SMITH

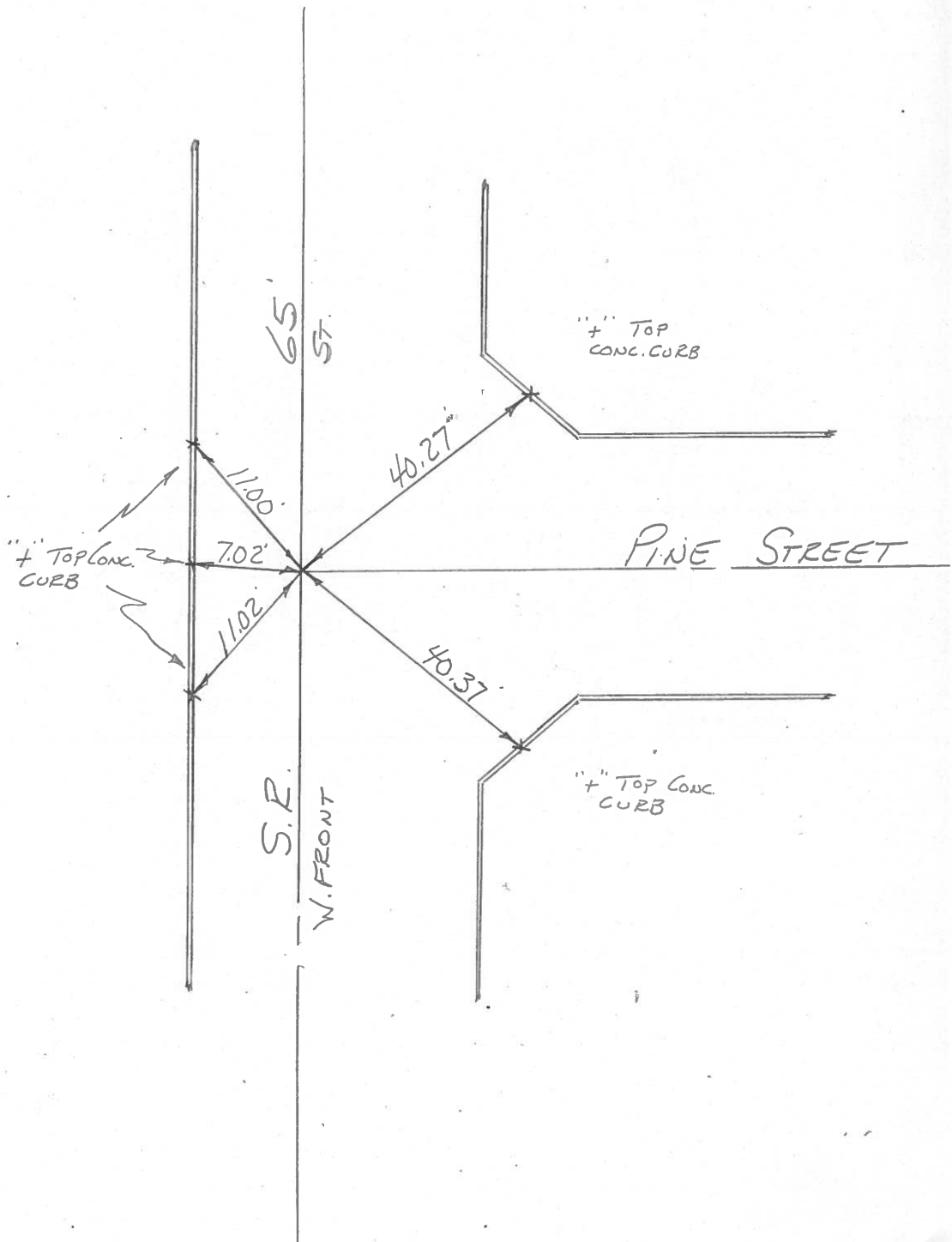
BOWERS

KNAPE

MEAD



FD. R.R. SPK.  
@ SURFACE



PERSONNEL TITLE PERSONNEL TITLE

COUNTY Wood DATE 8-25-65

Silvester

S. R. 65 WEATHER \_\_\_\_\_

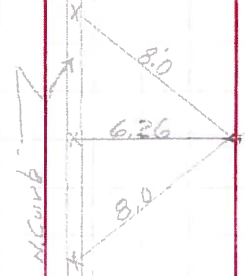
SEC. \_\_\_\_\_ TEMP \_\_\_\_\_

DESCRIPTION Perrysburg JOB NO. \_\_\_\_\_

LEFT CENTER LINE RIGHT

@ front of Mulberry St.

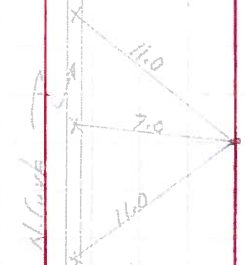
CP  
Ry. 2"  
R  
8-23-65



from old wit.  
found 2" iron Bolt with + on top 5" below Sur.  
Set new ties to x on N. Curb

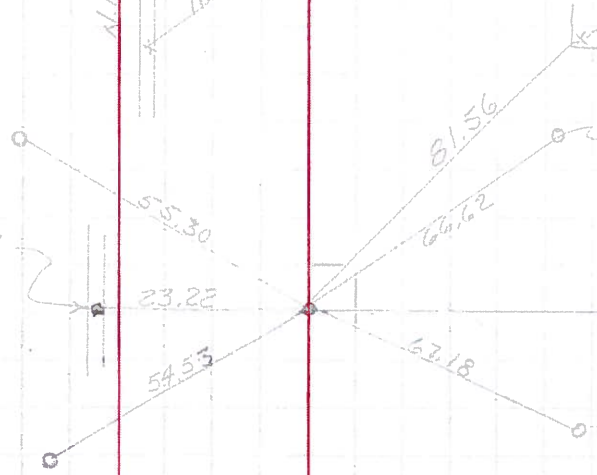
@ front of Pine St.

CP  
Ry. 2"  
R  
8-13-65



found iron Pipe 1' below Surface  
Set new ties to x on top N. Curb.

Near edge of Steel Pipe  
1' above ground



building curb Entrance

Near Edge Steel Pipe  
1' above ground

Ed Iron Pin Front of Louisiana Ave  
4" below Surface

Replaced R.P. Spk  
8-24-65

Near Edge Steel S&L Pipe  
1' above ground

Shower in N. Curb

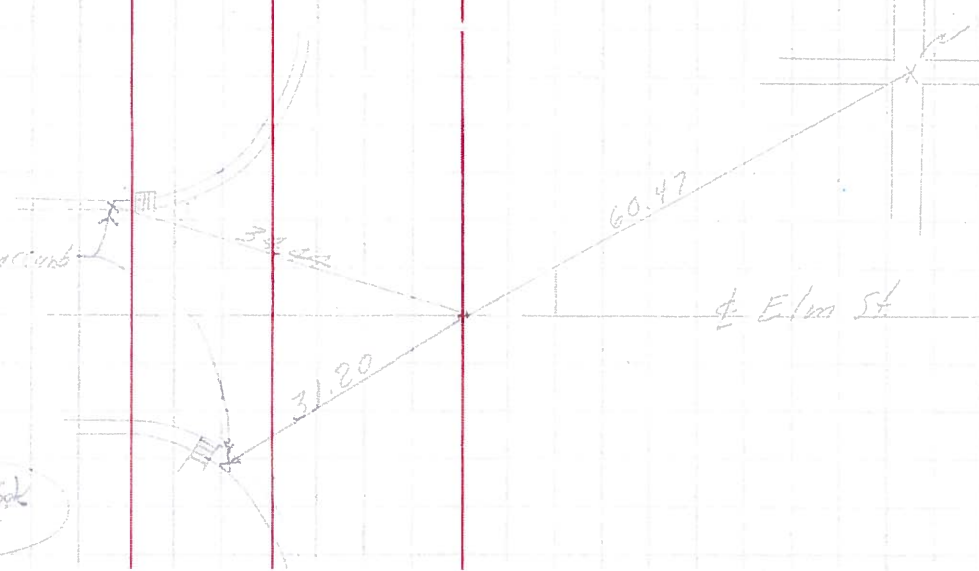


Near edge Steel S&L Pipe 1' above ground

in walk int' sec

Front of Elm St.  
Ed Iron Pin  
1" below Surface

Replaced R.P. Spk  
8-24-65



Elm St

PERSONNEL TITLE PERSONNEL TITLE

Silvester

COUNTY Wood

DATE 7/6/65

E

S. R. 65

WEATHER

Crew

SEC.

TEMP.

DESCRIPTION

LEFT

CENTER LINE

RIGHT

JOB NO.

W. Boundary of front St.  
Mon. Box Station Conc.

OK  
8-29-65

Shiner in A.P.L.C.

19.87

57.89

Hyd

88.93

East of (line)  
Canadian Zone

Shiner in A.P.L.C.

29.06

47.80

in center sidewalk  
old

Front of Mulberry St.  
with grad but find R.K.D.S.N. ?

P.K. 26.75

58.03

Drives car post  
old but good

Shiner in Tel. Pole

61.05

on top curb

front of Pine St. P.K. ?

39.95

40.72

E Pine Street

Shiner in Tel. Pole

42.52

on top curb