

O.D.O.T. DISTRICT 2 SURVEY OFFICE (USE ONLY)

PERSONNEL

REFERENCE NO. 29 D

SHEET 5 OF 9

NOTES LOEHRKE
 H.C. BARNHISEL
 R.C. HOFFMAN

DATE 6/4/85
 WEATHER PT. CLOUDY
 TEMP. 74°

ROUTE SR 65
 COUNTY WOOD
 TOWNSHIP PERRYSBURG
 SECTION 12 MILE RESERVE
 T 4 US

DWG BY NIESE PID _____

TYPE MONUMENT LG.R.R.SPIKE

~~ON SURFACE~~ - BELOW 1"

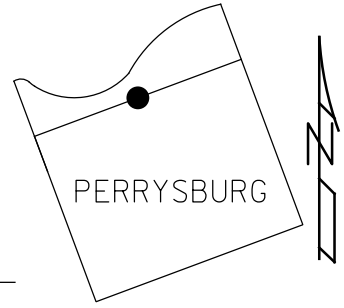
OFFSET \odot PAVEMENT 8.1' LT : ~~RT~~

- TO - EDGE PAVEMENT

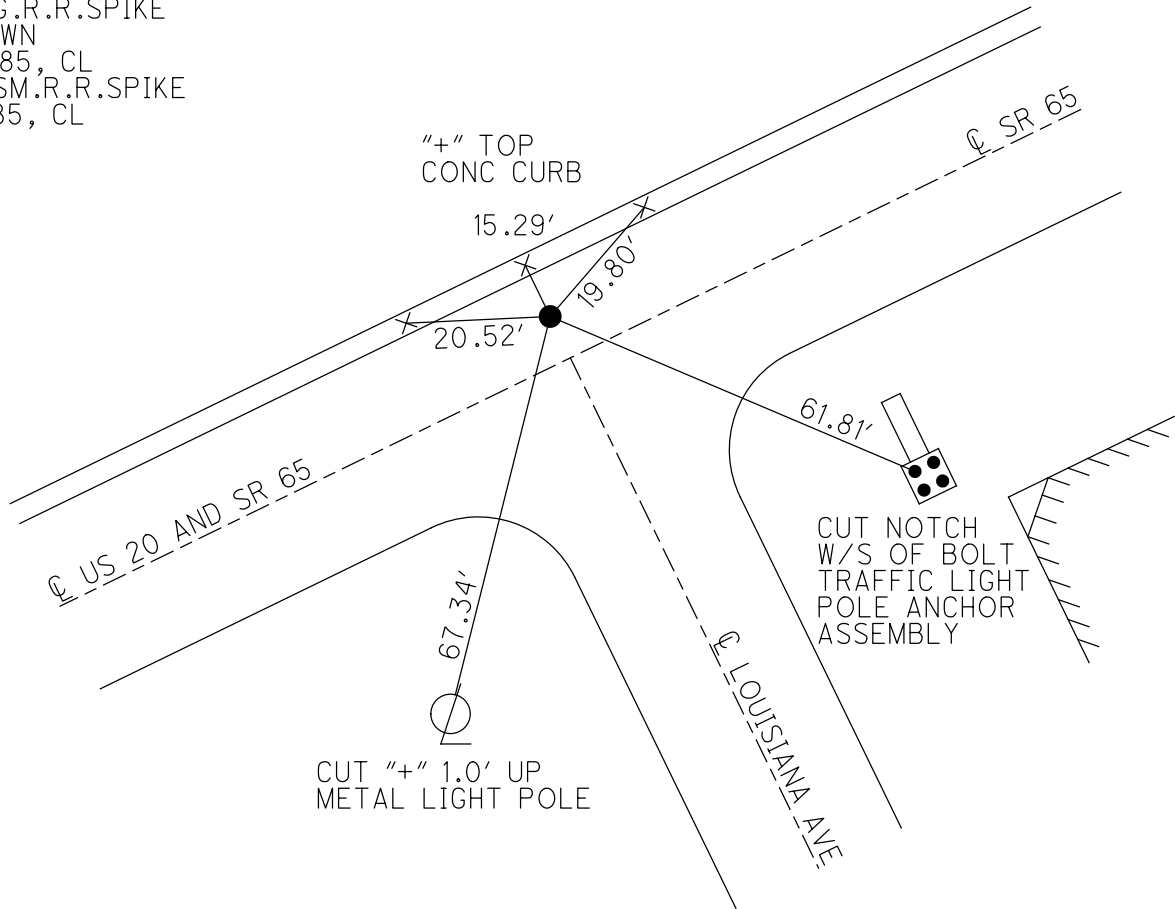
STATION: 967+84

HORZ.DATUM: _____ GEOID: _____

GRID: NORTHING: _____ EASTING: _____



RECORD:
 US 20 SLM 60+34
 FD LG.R.R.SPIKE
 1" DOWN
 6/4/85, CL
 SET SM.R.R.SPIKE
 7/1/85, CL



County WOOD S.R. 65 E U.S. 20

Date 6-4-85

Township PERRYSBURG CITY

Weather PE CLOUDY

Section _____

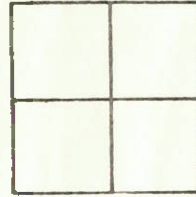
Temp. +75

T N, R E

Personnel LOEHRKE

HARTMAN

BARVHISEL

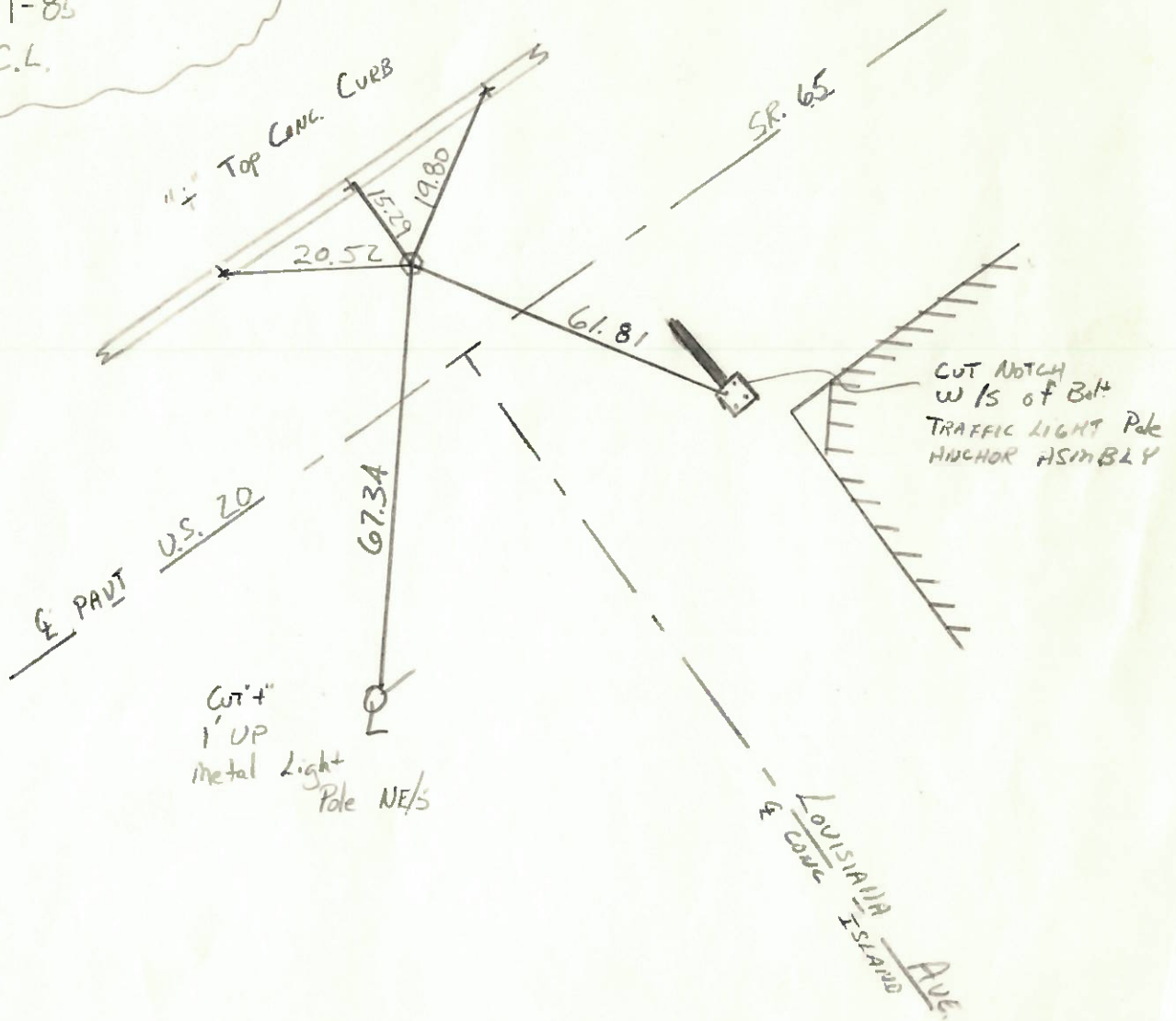


8.1 LF. Q SR. 65
ON. Q LOUISIANA AVE.

Fd. Lg R.R. Spike
1" BELOW

SM 967+84 SP 65
60+34 U.S. 20

Set Sm R.R. Spike
7-1-85
C.L.



County Wood

Date 7-31-78

Township PERRYSBURG

Weather Pt. Cloudy

Section _____

Temp. +73°

T N, R E

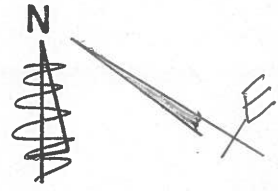
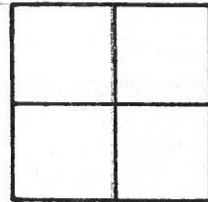
Personnel BURNSIDE

SMITH

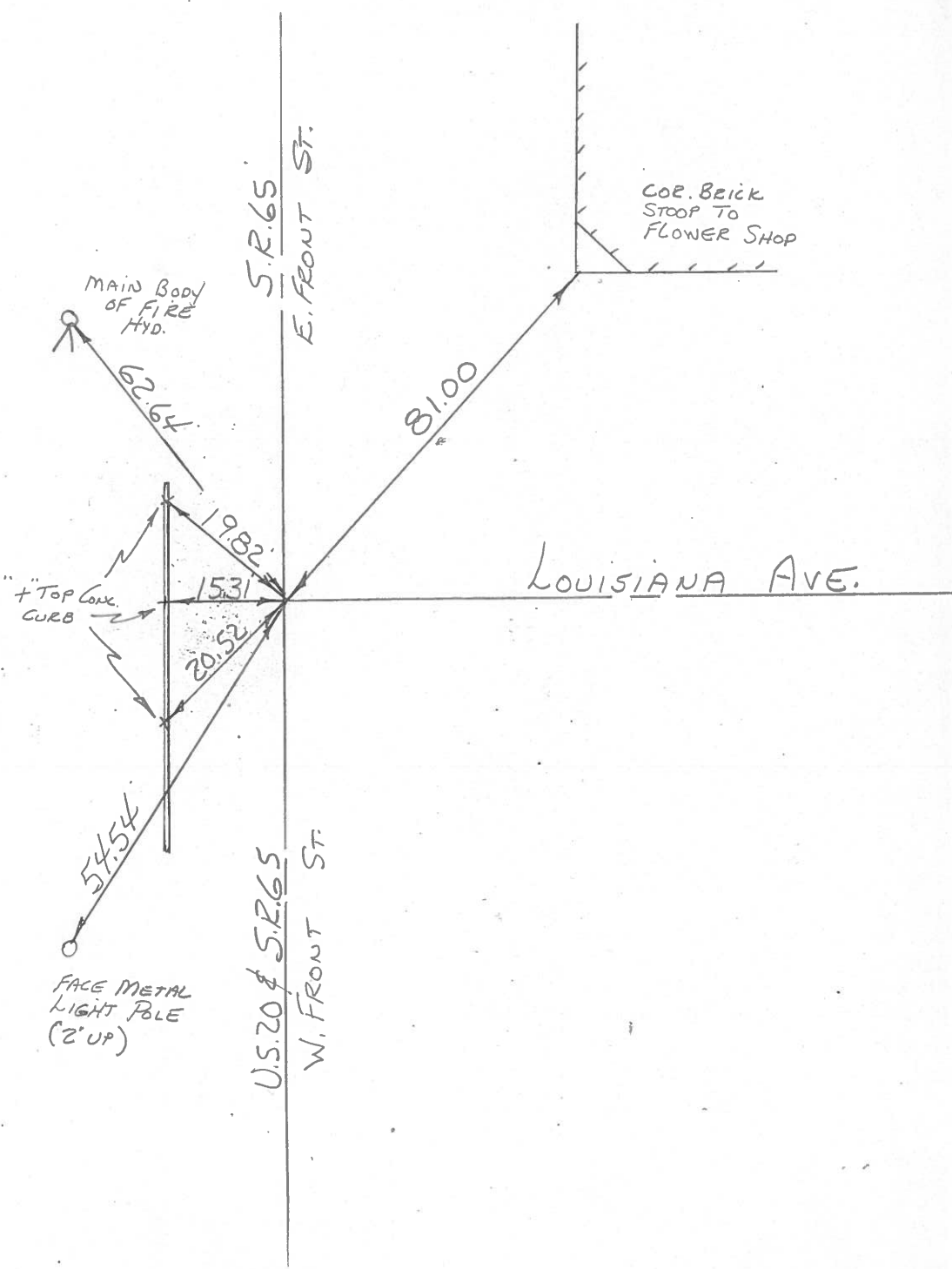
BOWERS

KNAPE

MEAD



FD.R.R. SPK.
@ SURFACE



PERSONNEL TITLE PERSONNEL TITLE

COUNTY Wood DATE 8-25-65

Silvester

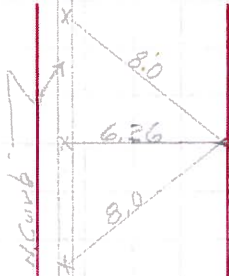
S. R. 65 WEATHER _____

SEC. _____ TEMP _____

DESCRIPTION Perrysburg LEFT CENTER LINE RIGHT JOB NO. _____

@ front of Main Perry St.

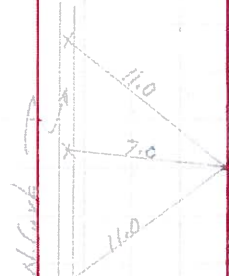
Repl. S&L
R.P.Spk.
8-24-65



from old wlt.
found 2" iron Bolt with + on top 5" below Sur.
Set new ties to x on N. Curb

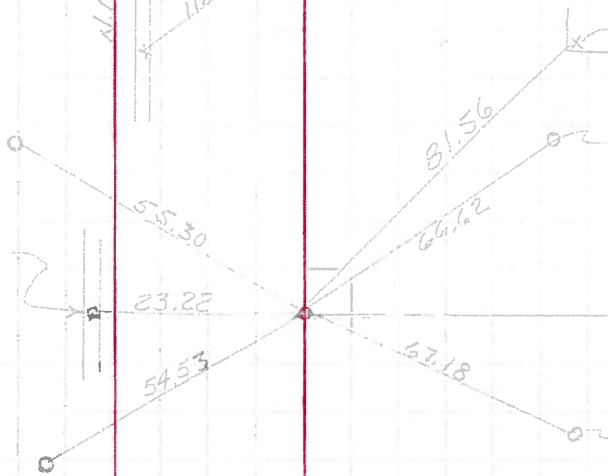
@ front of Pine St.

Repl. S&L
R.P.Spk.
8-13-65



found iron Pipe 1' below Surface
Set new ties to x on top N. Curb.

Near edge of S&L Pole
1' above ground



building curb Entrance

Near Edge Street S&L Pole
1' above ground

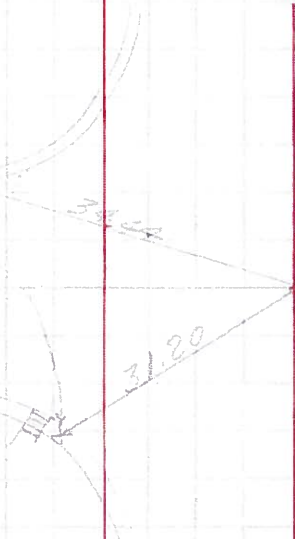
Shinner in N. Curb
Ed iron Pin Front of Louisiana Ave
4" below Surface

Replaced R.P.Spk
8-24-65

Near Edge Street S&L Pole
1' above ground

Front of Elm St
Ed iron Pin
1" below Surface

Replaced R.P.Spk
8-24-65



60.47

Elm St

in walk in Tr Sec

PERSONNEL TITLE PERSONNEL TITLE

SILVESTER
BURNSIDE
SMITH

COUNTY Wood DATE _____
 S. R. 65 WEATHER _____
 SEC. _____ TEMP _____

DESCRIPTION LEFT CENTER LINE RIGHT JOB NO.

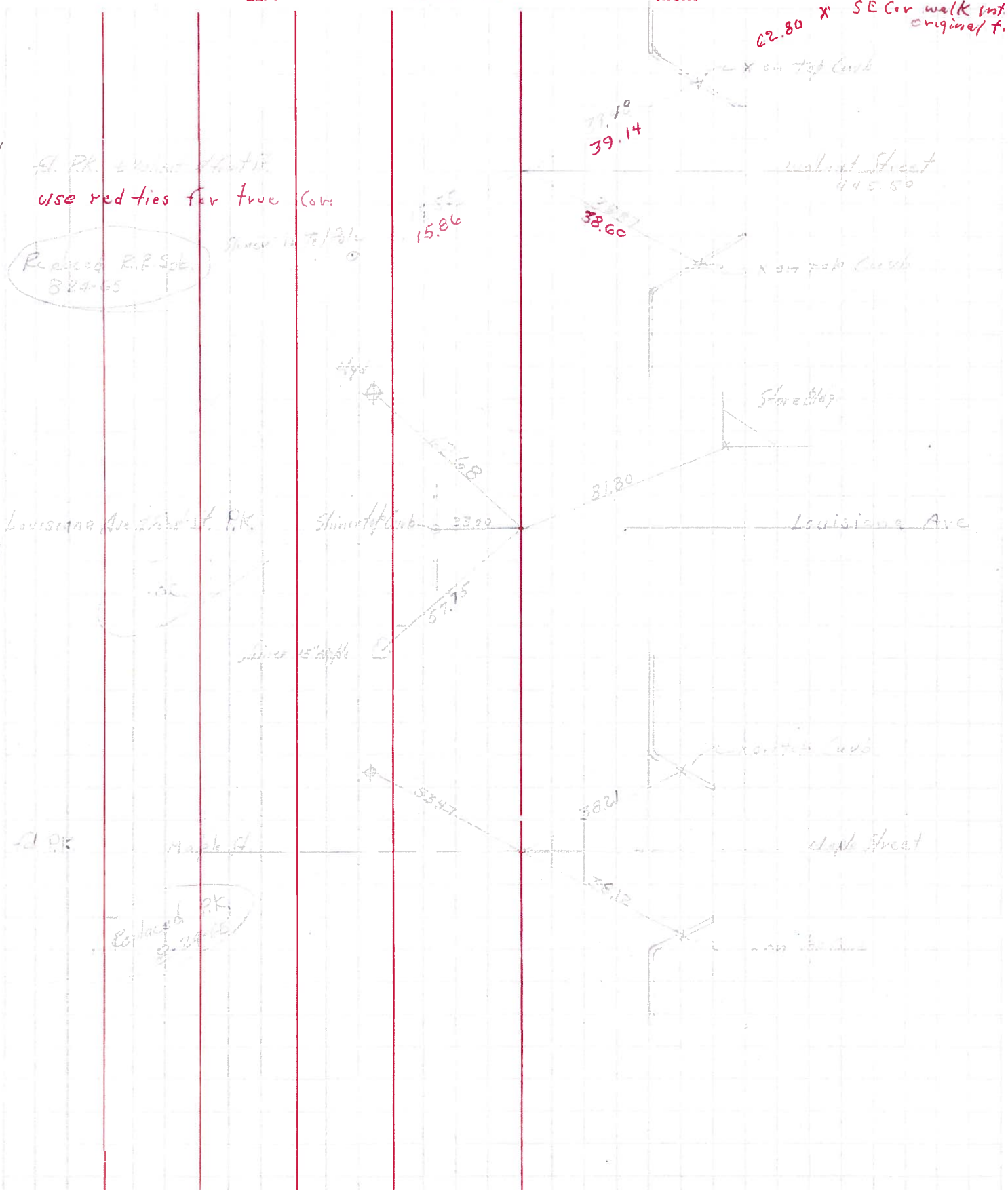
✓
/

Fl. Pk. use red ties for true Cor.
 R. P. Sub. 824-65

○
✓

Louisiana Ave. St. Pk.

St. Pk. Mark of
 Contained Pk. 8-24-65



PERSONNEL TITLE PERSONNEL TITLE

COUNTY Wood DATE

S. R. #65 WEATHER

SEC. Perrysburg TEMP.

DESCRIPTION # LEFT CENTER LINE RIGHT JOB NO.

DESCRIPTION #	LEFT	CENTER LINE	RIGHT	JOB NO.
<p>768 Sta. 0+00 mon. box - mon. in sight. Inter. <u>W. boundary of Front St.</u></p>				
<p>769 Sta. 9+91.08 $\Delta = 0^\circ 02' Lt.$ I. pin</p>			<p>Cross in center of sidewalk S.E. 4 N.E. cor. brick car. past S.W. 58.</p>	
<p>770 Sta. 16+35.55 No. Angle I. pin</p>			<p>Cross in center of sidewalk S.W. 54 Cross in center of sidewalk S.E. 54.</p>	
<p>771 Sta. 29+24.12 No Angle I. pin</p>			<p>Cross in $\frac{1}{2}$ of walk S.W. 47.5 Cross in S.E. cor. of walk inter. S.E. 62.5</p>	
<p>772 Sta. 0+00 <u>Intersection Louisiana Ave. & Front St.</u> No Angle I. pin</p>			<p>Near edge of light pole base N.W. 49.5 Near edge of light pole base S.W. 51.9 Near edge of light pole base S.E. 51.6</p>	
<p>773 Sta. 6+60.8 No angle I. pin</p>			<p>Shiner in 30" maple N.W. 53.5 Shiner in 30" maple S.W. 54.6 N.W. Cor. of inter. of walk S.E. 57.5</p>	