

O.D.O.T. DISTRICT 2 SURVEY OFFICE (USE ONLY)

PERSONNEL

REFERENCE NO. 29 E

SHEET 6 OF 9

NOTES LOEHRKE

DATE 6/4/85

ROUTE SR 65

H.C. BARNHISEL

WEATHER PT. CLOUDY

COUNTY WOOD

R.C. HOFFMAN

TEMP. 60°

TOWNSHIP PERRYSBURG

SECTION 12 MILE RESERVE

DWG BY NIESE

PID _____

T 4 US

TYPE MONUMENT LG.R.R.SPIKE

~~ON SURFACE~~ - BELOW 1"

OFFSET \odot PAVEMENT 8.0' LT : ~~RT~~

- TO - EDGE PAVEMENT

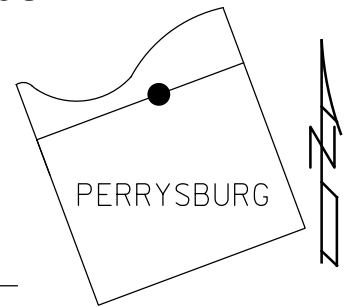
STATION: 974+45

HORZ.DATUM: _____

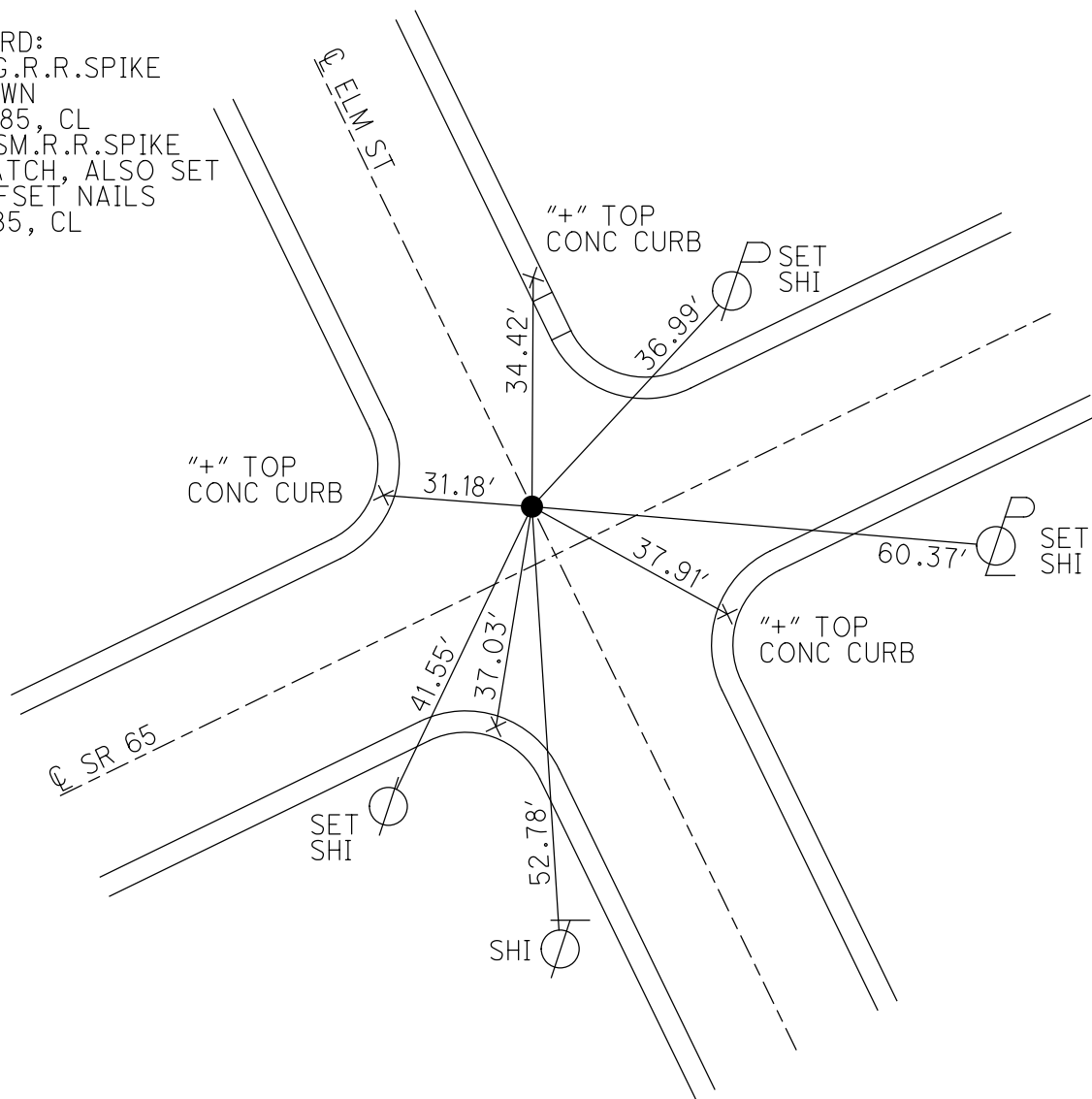
GEOID: _____

GRID: NORTHING: _____

EASTING: _____



RECORD:
 FD LG.R.R.SPIKE
 1" DOWN
 6/4/85, CL
 SET SM.R.R.SPIKE
 IN PATCH, ALSO SET
 4 OFFSET NAILS
 7/1/85, CL



County Wood S.R. 65

Date 6-4-85

Township PERRYSBURG, CITY

Weather Pt CLOUDY

Section _____

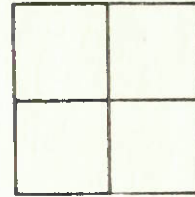
Temp. +60

T N, R E

Personnel LOHRKE

HOFFMAN RC

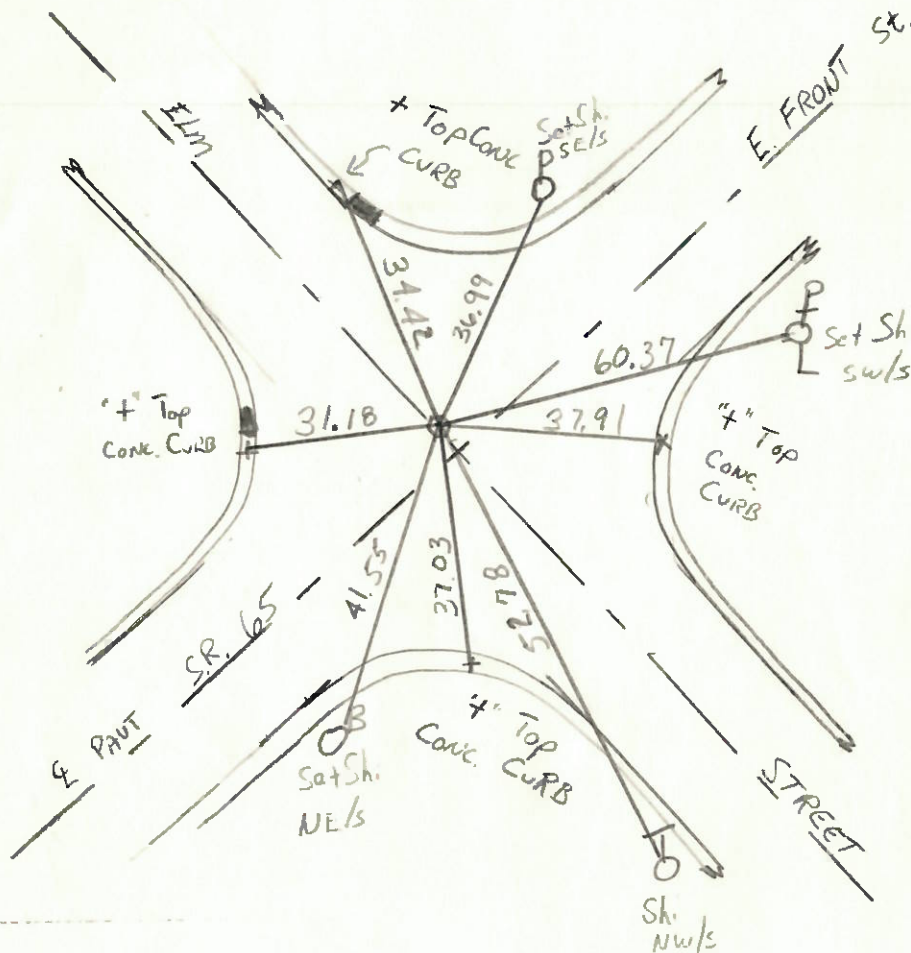
BARNHISEL HC



8.0' Lf of Q PAVT SR 65
ON Q PAVT ELM St. S.
SLM 974+ 45

Fd Lg R.R. Spike
1" Down

Set Sm RR Spike IN PATCH
Also set 4 offset NAILS
7-1-85
CC



O.D.O.T. DISTRICT 2 SURVEY OFFICE

Sht. 6 of 20
S.R. 65

County WOOD

Date 7-31-78

Township PERRYSBURG

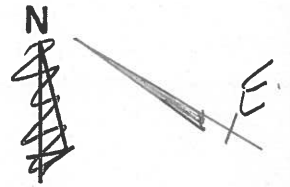
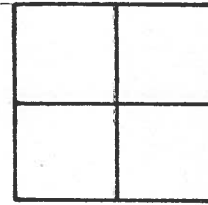
Weather PT. CLOUDY

Section _____

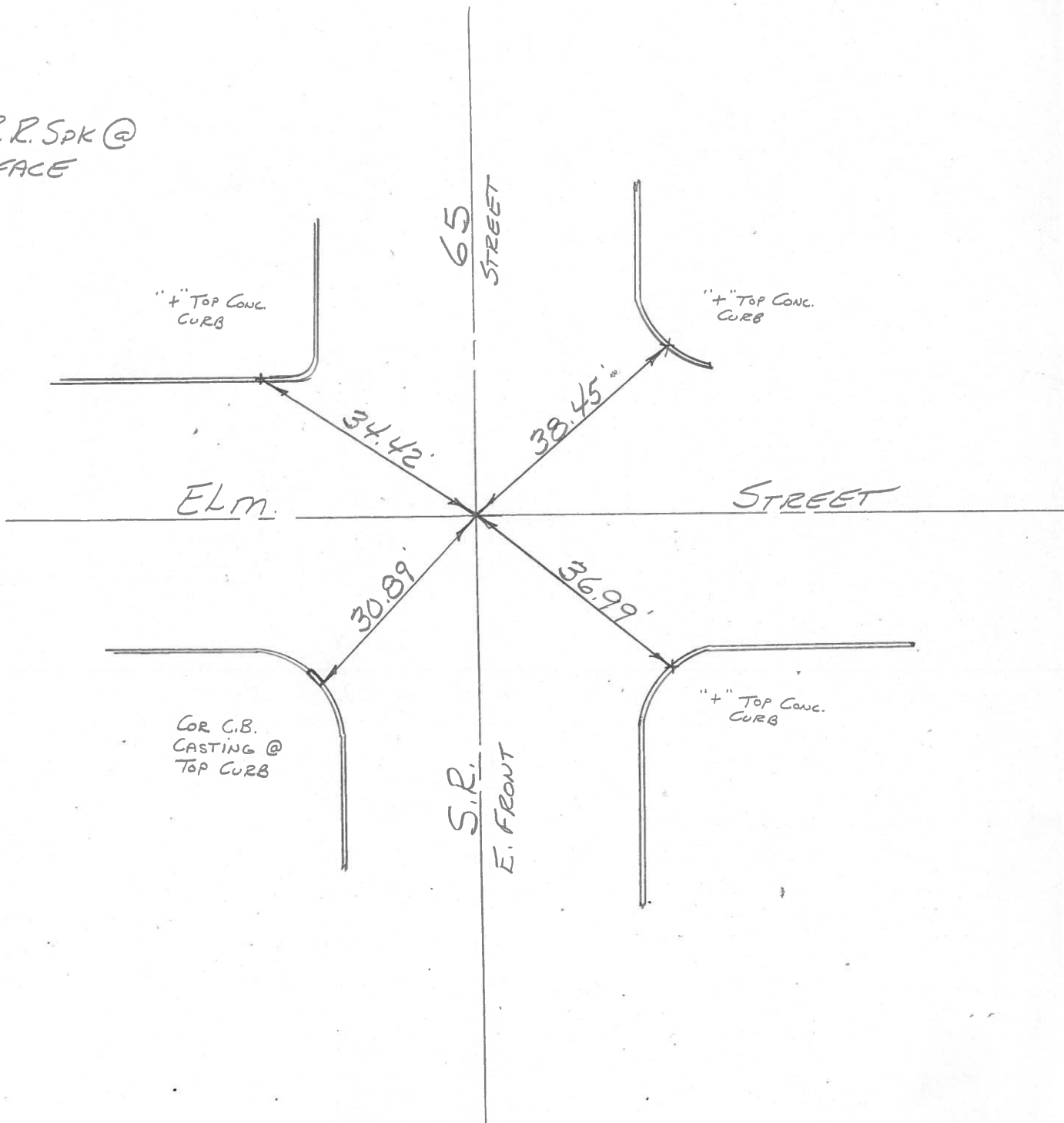
Temp. +72°

T N, R E

Personnel BURNSIDE
SMITH
BOWERS
KNAPE
MEAD



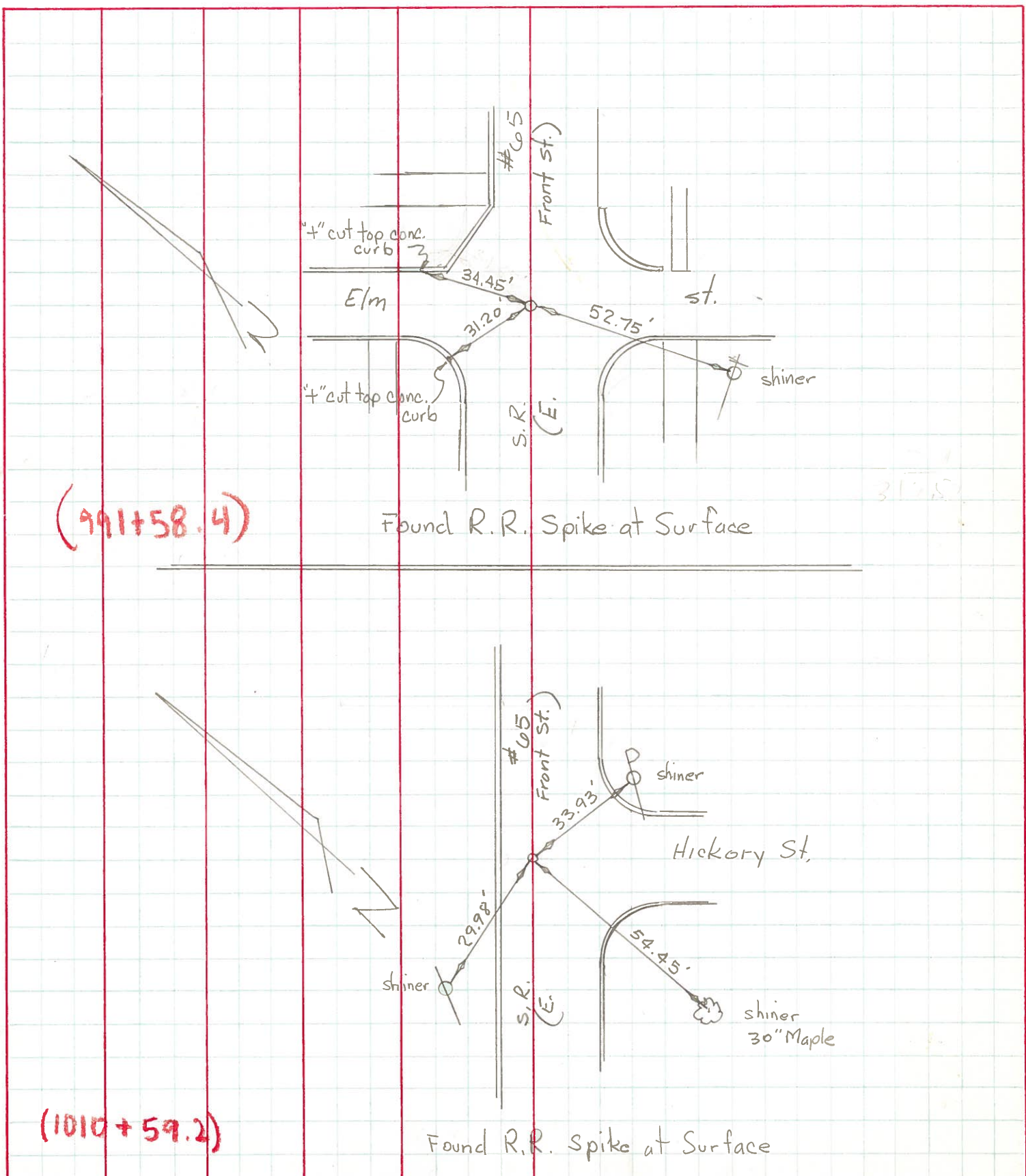
FD. R. R. Spk @
SURFACE



PERSONNEL	TITLE	PERSONNEL	TITLE
Granata			
Vanyo			
Newser			
Jackson			

COUNTY Wood DATE Aug. 16, 1971
 S. R. #65 WEATHER P. Cloudy
 SEC. _____ TEMP. 70's

DESCRIPTION Reference Mon. on S.R. #65 JOB NO. _____



(991+58.4)

Found R.R. Spike at Surface

(1010+59.2)

Found R.R. Spike at Surface

PERSONNEL TITLE PERSONNEL TITLE

COUNTY Wood DATE 8-25-65

Silvester

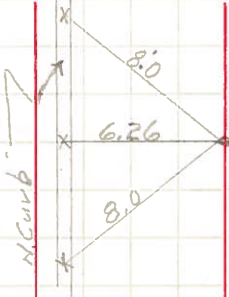
S. R. 65 WEATHER _____

SEC. _____ TEMP. _____

DESCRIPTION Perrysburg JOB NO. _____

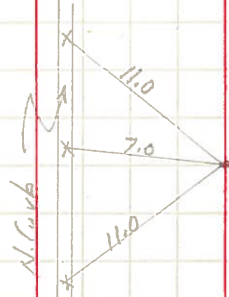
LEFT CENTER LINE RIGHT

@ front of Mulberry St.
C.S. +
R.P. Spk.
8-12-65



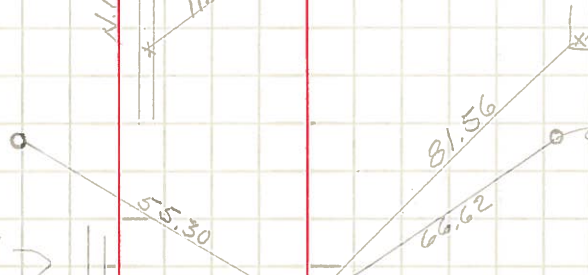
from old wit.
found 2" iron Bolt with + on top 5" below Surface
Set new ties to x on N. Curb

@ front of Pine St.
R.P. Spk.
8-13-65



found iron Pipe 1' below Surface
Set new ties to x on top N. Curb.
building Curb Entrance

Near edge Steel S&L Pole
1' above ground



Near Edge Steel Semaphore Light Pole
1' above ground

Shiner in N. Curb
Ed. iron Pin Front of Louisiana Ave
4" below Surface

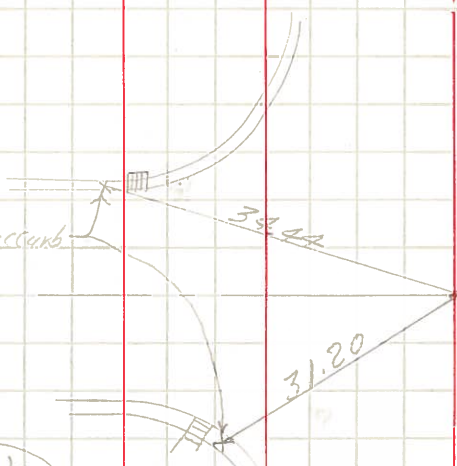
Replaced R.P. Spk
8-24-65

Near Edge Steel S&L Pole
1' above ground

Near edge Steel S&L Pole 1' above ground

Front of Elm St.
Ed. iron Pin
4" below Surface

Replaced R.P. Spk
8-24-65



x in walk in intersect

Elm St