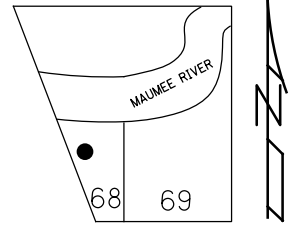


O.D.O.T. DISTRICT 2 SURVEY OFFICE (USE ONLY)

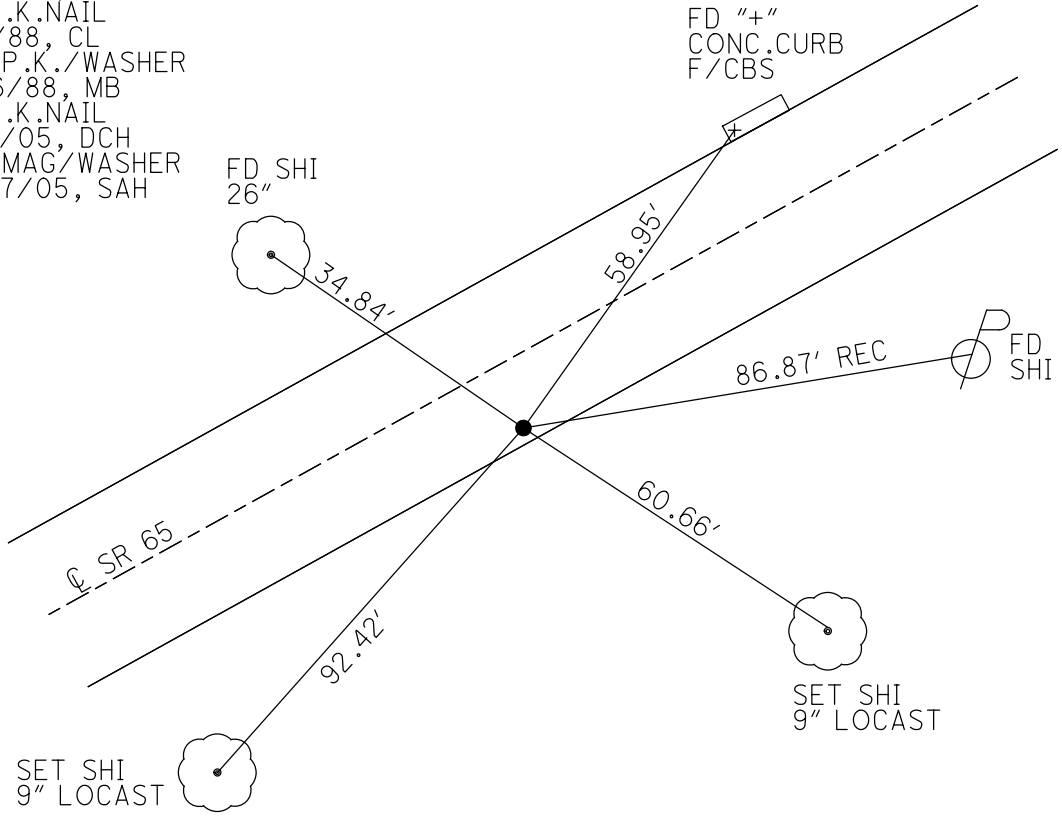
PERSONNEL \_\_\_\_\_ REFERENCE NO. 30 A SHEET 2 OF 23  
 NOTES HUSS DATE 9/13/05 ROUTE SR 65  
 H.C. HOMAN WEATHER SUNNY COUNTY WOOD  
 R.C. MIKLOVIC TEMP. 78° TOWNSHIP PERRYSBURG  
 SECTION RT 68  
 DWG BY RHOADES PID \_\_\_\_\_ T 3 12 MILE RESERVE

TYPE MONUMENT MAG/WASHER  
 ON SURFACE - ~~BELOW~~ ON \_\_\_\_\_  
 OFFSET  $\text{\textcircled{C}}$  PAVEMENT 9.5' ~~ET~~ : RT  
1.6' TO RT EDGE PAVEMENT  
 STATION: 1007+89



HORZ. DATUM: \_\_\_\_\_ GEOID: \_\_\_\_\_  
 GRID: NORTHING: \_\_\_\_\_ EASTING: \_\_\_\_\_

RECORD: P.I.  
 STA. 3+79.55  
 1937 PLANS  
 $\Delta = 12^\circ 50' \text{ LT}$   
 FD R.R. SPIKE  
 FD IRON BLOT  
 ATOP BRASS R/W MON.  
 5/22/72, BURNSIDE  
 SET P.K. NAIL  
 11/13/80, IRS  
 FD P.K. NAIL  
 5/2/88, CL  
 SET P.K./WASHER  
 8/26/88, MB  
 FD P.K. NAIL  
 9/13/05, DCH  
 SET MAG/WASHER  
 10/27/05, SAH



O.D.O.T. DISTRICT 2 SURVEY OFFICE

PERSONNEL

REFERENCE NO. 30-A SHEET 2 OF 14

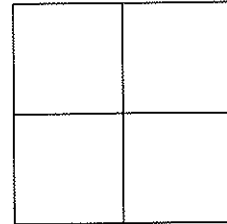
NOTES HUSS  
 H.C. HOMAN  
 R.C. MIKLOVIC

DATE 9-13-05  
 WEATHER SUNNY  
 TEMP. 78°

ROUTE SR 65  
 COUNTY WOOD  
 TOWNSHIP PERRYSBURG  
 SECTION RIVER TRACT

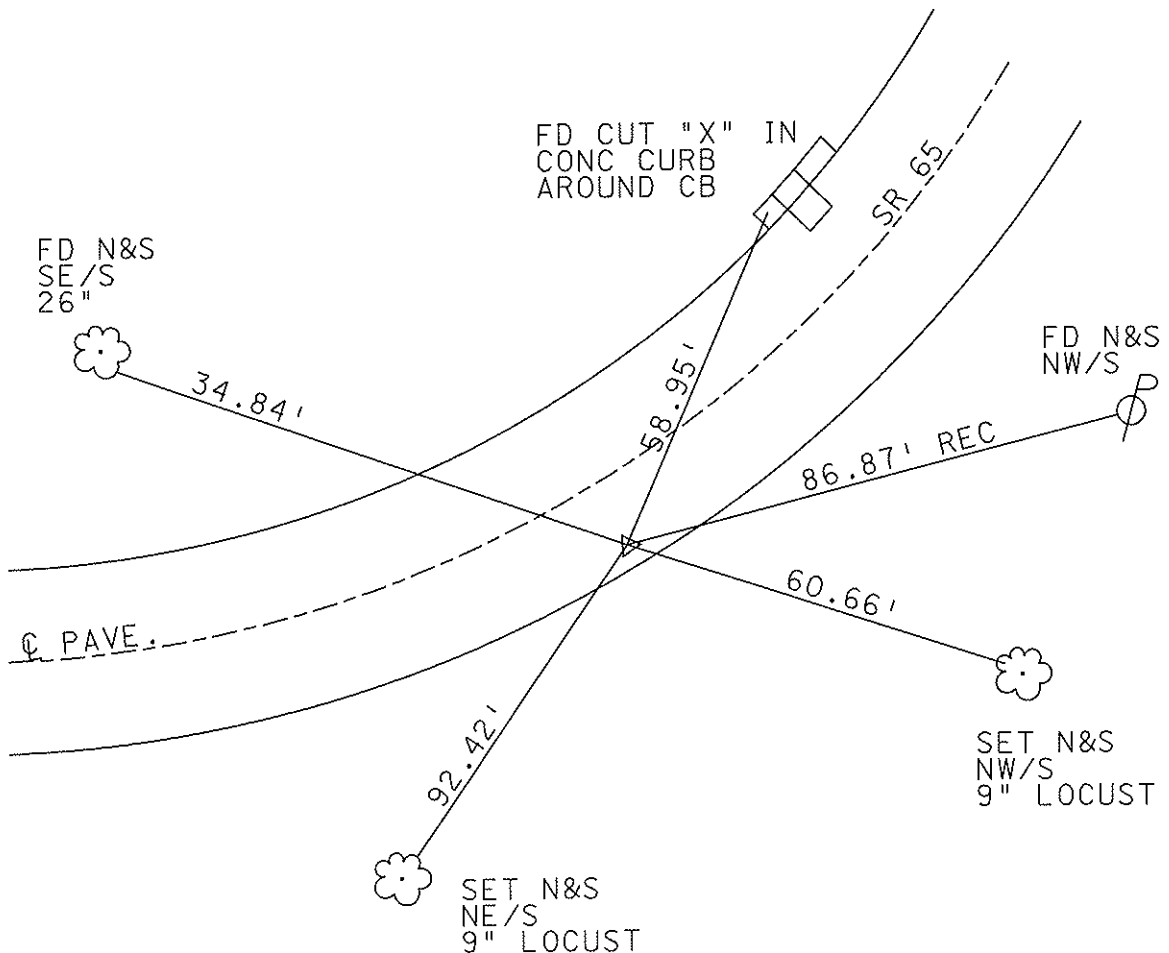
~~T-7-N R-1-E~~  
 Town 3, 12 mile Res.

TYPE MONUMENT PK NAIL  
 ON SURFACE - ~~BELOW~~ ON  
~~LEFT~~ RIGHT 9.5' RT.  
1.6' TO RT EDGE PAVEMENT  
 S.L.M. 1007+89



RECORD  
 STA 3+79.55 (1937 PLANS)  
 DELTA=12°50' LT.

SET MAG NAIL  
 & WASHER  
 10-27-05  
 SAH



# O.D.O.T. DISTRICT 2 SURVEY OFFICE

PERSONNEL

REFERENCE NO. 30-A

SHEET      OF     

NOTES BARNHISEL

H.C. Reed

R.C. Loehrke

HOFFMAN

DATE 5-2-88

WEATHER SUNNY

TEMP. +70°

ROUTE 65

COUNTY WOOD

TOWNSHIP Perrysburg

SECTION LINETRACT

T 7 N R 11 E

TYPE MONUMENT P.K. NAIL

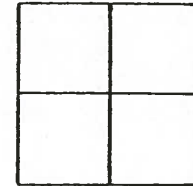
ON SURFACE - ~~BELOW~~ yes

LEFT - & PAV'T. - RIGHT 9.7

5.8 TO Lt EDGE PAVEMENT CURB

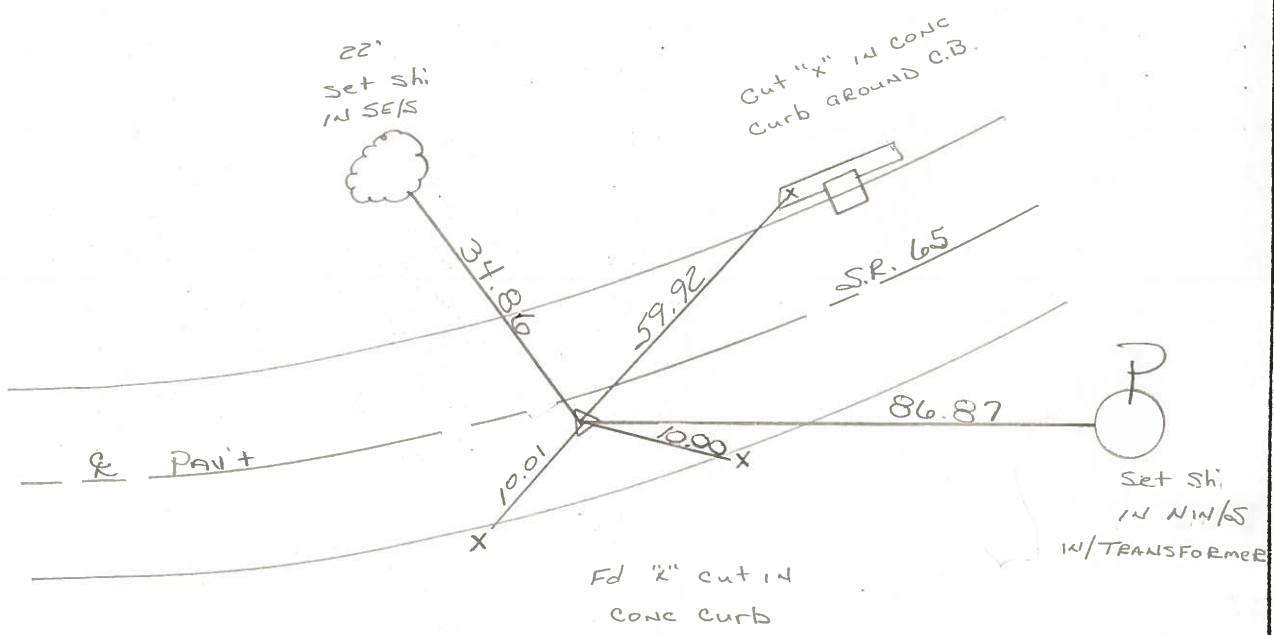
S.L.M. 1007+89

30-A



RECORD  
 STA: 3+79.55 (1937 PLANS)  
 $\Delta = 120^\circ 50' \text{ Lt}$

Set P.K. & Klasher  
 8-26-88  
 m.B.



O.D.O.T. DISTRICT 2 SURVEY OFFICE

SHEET \_\_\_\_\_ OF \_\_\_\_\_

County Wood S.R. 65

Date 13 Nov. 80

Township \_\_\_\_\_

Weather Cloudy

Section \_\_\_\_\_

Temp. 40°

T    N, R    E

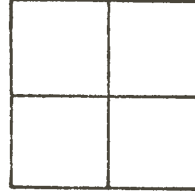
Personnel I. Stone

R. Michalak

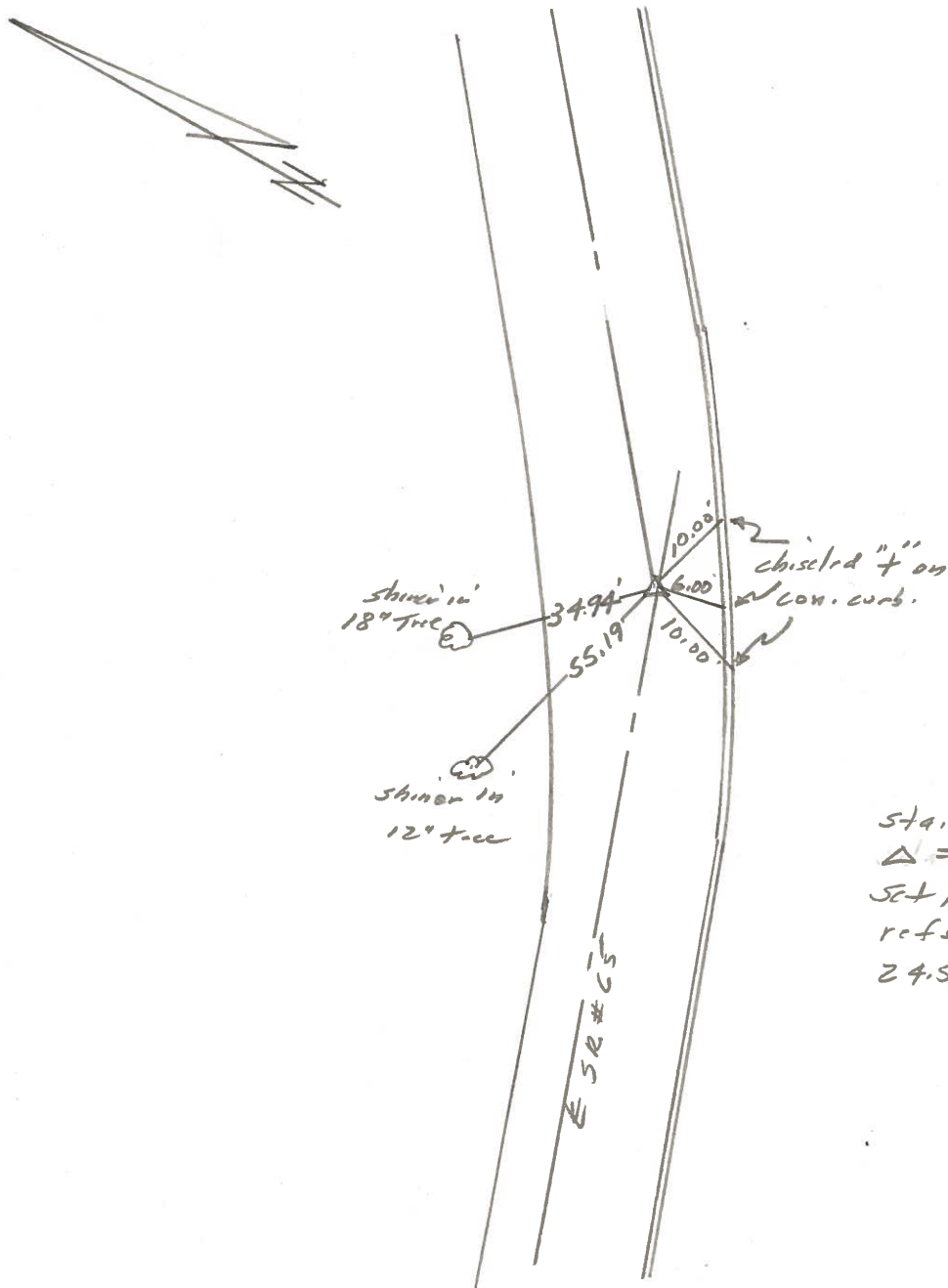
P. Neuser

D. Curtis

H. Mead



REF. No. 30-A



Sta. 3+79.55 (1937 plans)  
 $\Delta = 12^{\circ} 50'$  Lt.  
 Set PK Nail as per 1972  
 refs. 5.7' to S. edge put,  
 24.5' to N. edge put.

