

Q.D.O.T. DISTRICT 2 SURVEY OFFICE

Sht. 9 of 20
S.R. 65

County WOOD

Date 7-31-78

Township PERRYSBURG

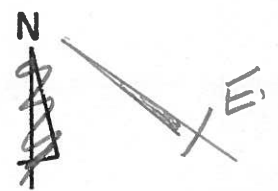
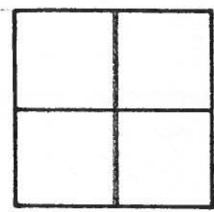
Weather CLEAR

Section _____

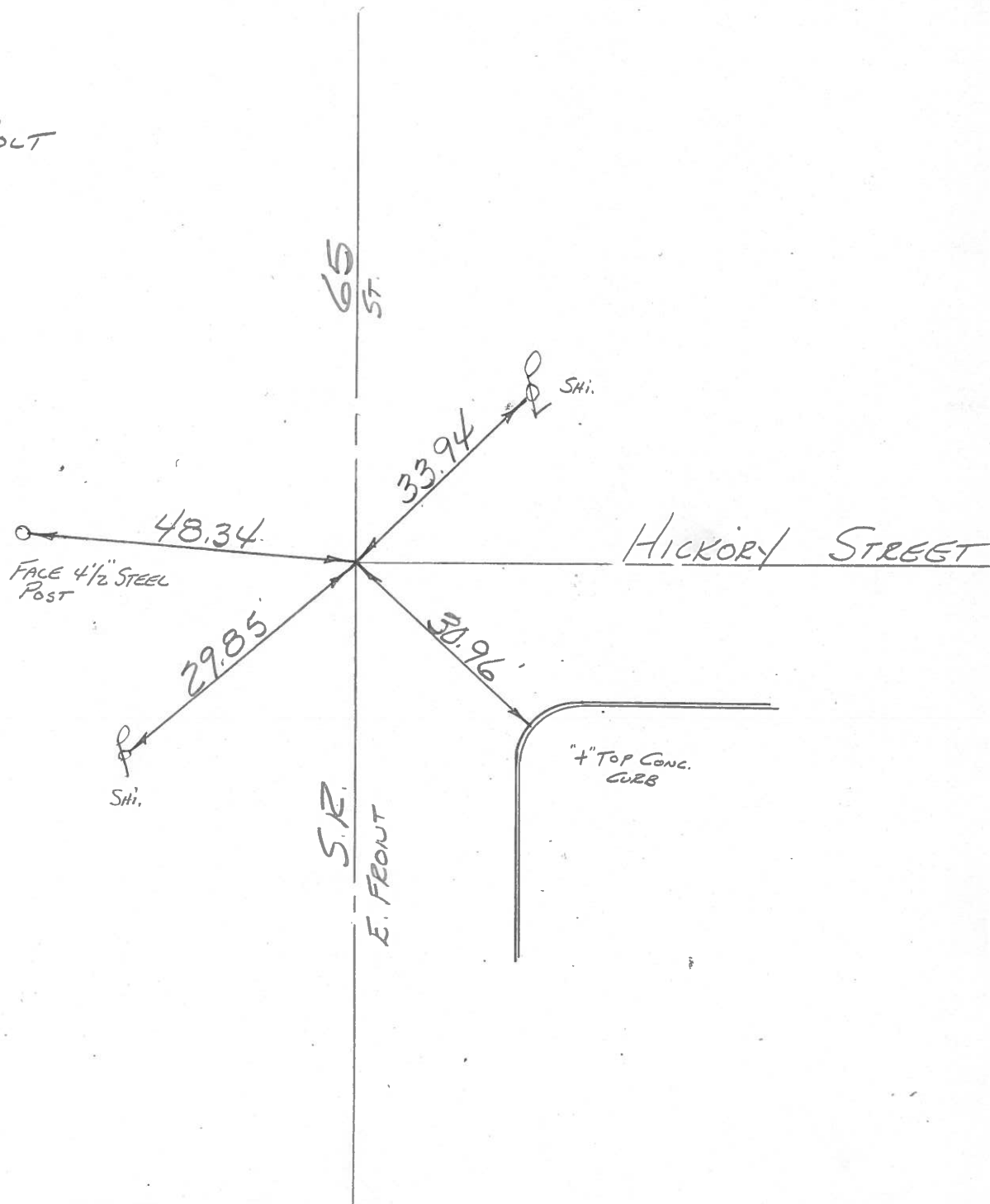
Temp. +74°

T N, R E

Personnel BURNSIDE
SMITH
BOWERS
KNAPE
MEAD



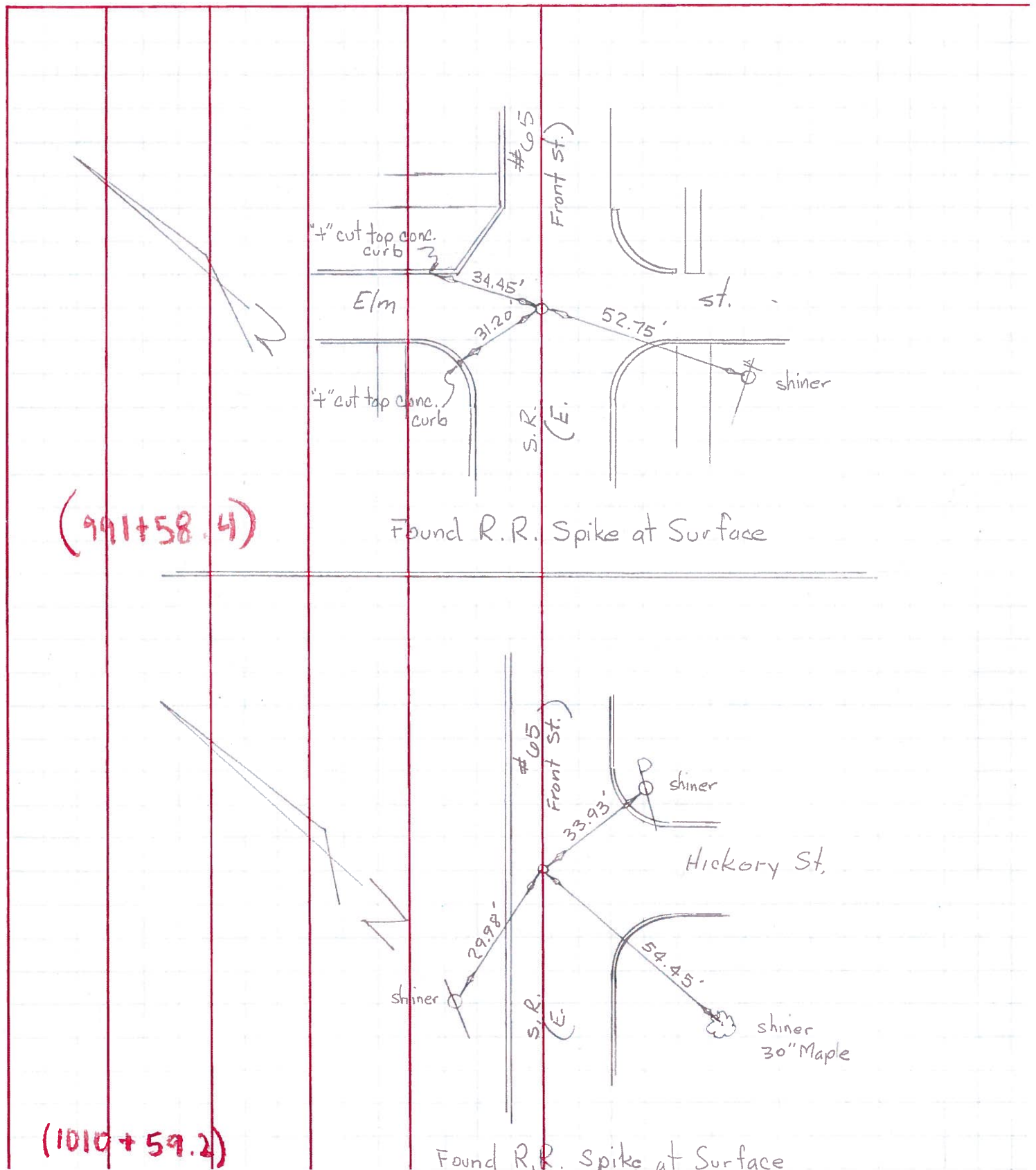
FD LG. I. BOLT
4" DEEP



PERSONNEL	TITLE	PERSONNEL	TITLE
Granata			
Vanyo			
Newser			
Jackson			

COUNTY Wood DATE Aug. 16, 1971
 S. R. #65 WEATHER P. Cloudy
 SEC. _____ TEMP. 70's

DESCRIPTION Reference Mon. on S.R. #65 JOB NO. _____



PERSONNEL TITLE PERSONNEL TITLE

COUNTY Wood

DATE

S. R. 65

WEATHER

SEC. TEMP.

DESCRIPTION LEFT CENTER LINE RIGHT JOB NO.

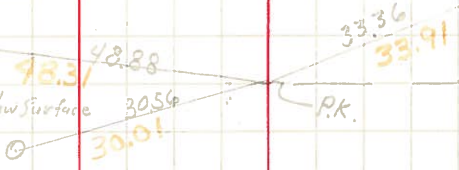
Use ORANGE Dist. for Truc. Cor.

Fd. P.K. 58 South
7.15 East of

5" casing
Iron Bolt 3 1/2" below surface

Replaced P.P. Spk
8-24-65

Shine in A Pale



Shine in PP

Hickory Street

30

Fd. P.K.

Mon. Box
Replaced P.K.
8-24-65

Stone Cor. Post.



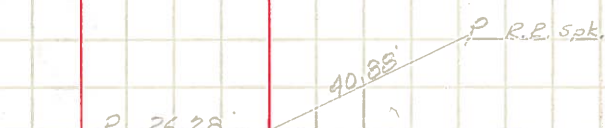
E. BOUNDARY ST.

31

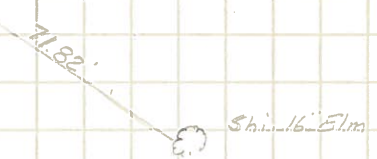
Fd. P.K.

Replaced P.K.
8-24-65

P. 26.28
Shi.



Car. Brick
fence 1' above
Ground.

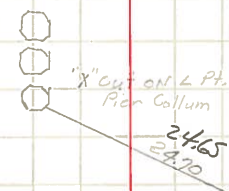


HUFFORD ST.

31-A

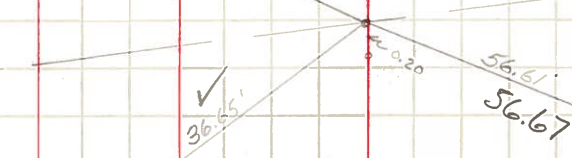
Fd. P.K.

Replaced P.K.
8-24-65



OHIO TURNPIKE

P.K. on 20' West



'X' cut on L Pt. Pier Collum

'X' cut on Face
Pier Collum

PERSONNEL TITLE PERSONNEL TITLE

COUNTY Wood

DATE

S. R. #65

WEATHER

SEC. "C" (pt.)

TEMP.

DESCRIPTION East boundary, Perrysburg

JOB NO.

LEFT CENTER LINE RIGHT

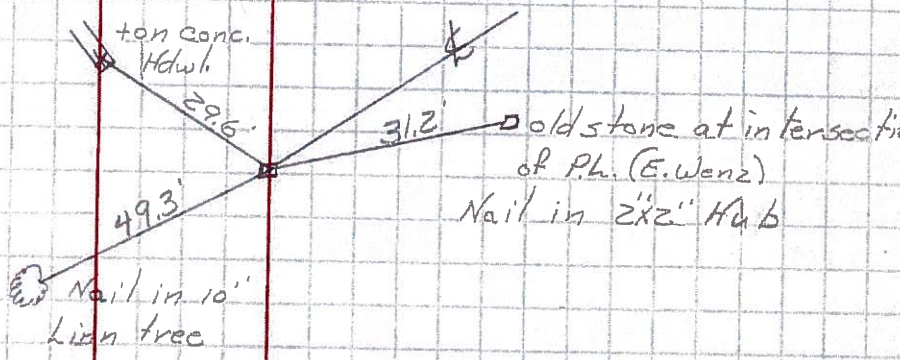
774

Sta. 25+94.0
I. pin

Shiner in 20" Elm N. 32.1
Shiner in 2" Elm N.E. 41.3
Near edge of sewer M.H. S.E. 37.1

775

Sta. 48+54.2
P.I. Δ = 32° 09' R.



776

Sta. 40+25.7
P.I. Δ = 26° 22' 30"

Shiner in 10" Linn S.W. 25.6
Shiner in 18" Linn S.E. 66.2
10" Box Elder E. 36.9

777

Sta. 31+66.4
P.I. Δ = 9° 47' Lt.

