

O.D.O.T. DISTRICT 2 SURVEY OFFICE (USE ONLY)

PERSONNEL

REFERENCE NO. 30 B

SHEET 1 OF 8

NOTES HUSS

DATE 9/13/05

ROUTE SR 65

H.C. HOMAN

WEATHER SUNNY

COUNTY WOOD

R.C. MIKLOVIC

TEMP. 78°

TOWNSHIP PERRYSBURG

SECTION RT 69

DWG BY NIESE

PID -

T 3

12 MILE RESERVE

TYPE MONUMENT SM.R.R.SPIKE

ON SURFACE - ~~BELOW~~ ON

OFFSET 6.5' TO RT PAVEMENT 5.3' ± : RT

6.5' TO RT EDGE PAVEMENT

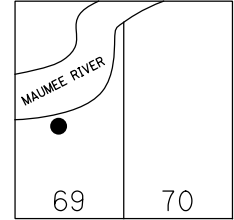
STATION: 1035+75

HORZ.DATUM: NAD83(2011)

GEOID: 2012A

GRID: NORTHING: 695424.330

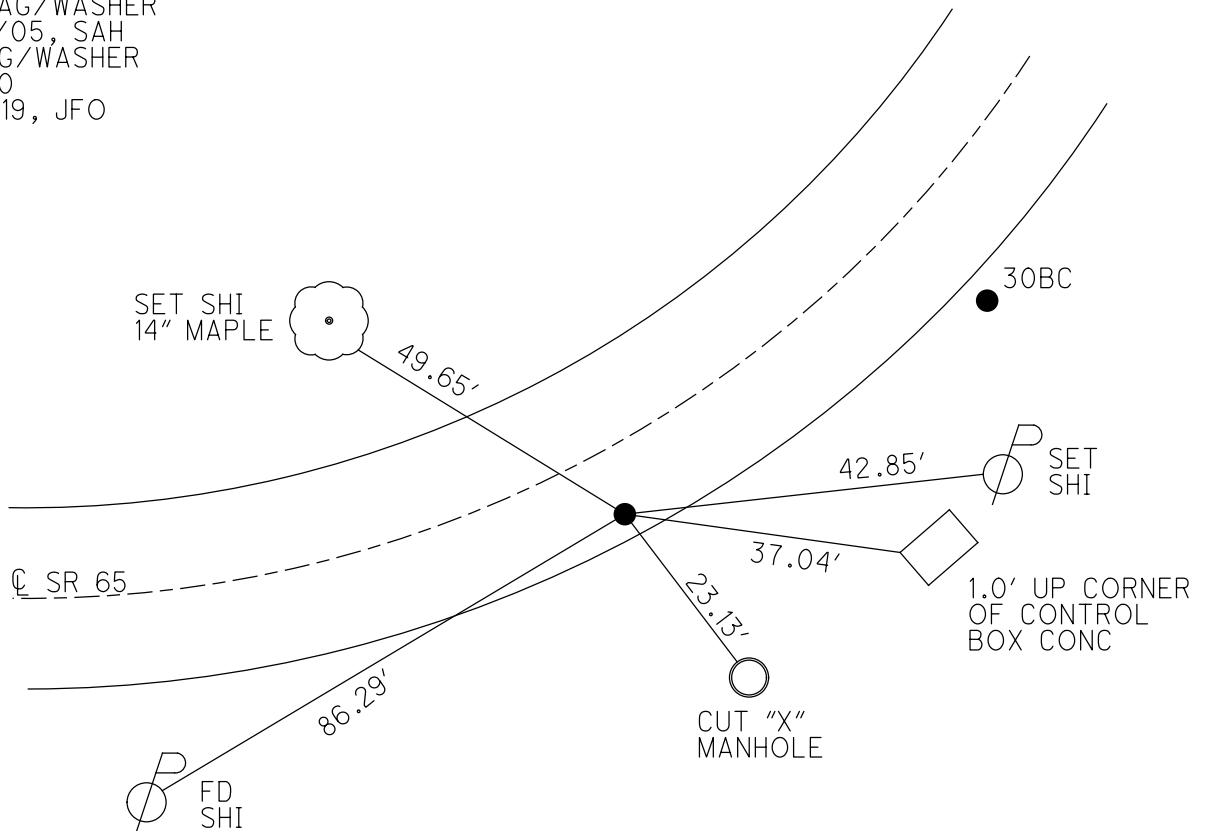
EASTING: 1665032.098



RECORD: P.I.  
1937 CL SURVEY

DIST. 30B-30BC= 64.73'

CL RW  
STA. 31+66.4  
 $\Delta = 9^\circ 50'$  LT  
SET MAG/WASHER  
10/28/05, SAH  
FD MAG/WASHER  
REFB30  
12/16/19, JFO



O.D.O.T. DISTRICT 2 SURVEY OFFICE

PERSONNEL

REFERENCE NO. 30-B

SHEET 3 OF 14

NOTES HUSS

DATE 9-13-05

ROUTE SR 65

H.C. HOMAN

WEATHER SUNNY

COUNTY WOOD

R.C. MIKLOVIC

TEMP. 78°

TOWNSHIP PERRYSBURG

SECTION RIVER TRACT

~~T7-N R11-E~~

78 and 3, 12 mile Res.

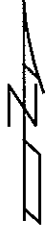
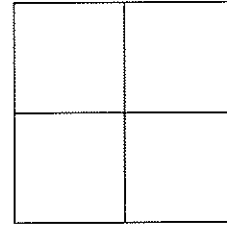
TYPE MONUMENT SM RR SPIKE

ON SURFACE - ~~BELOW~~ ON

~~LEFT~~ Q PAVE - RIGHT 5.3' RT

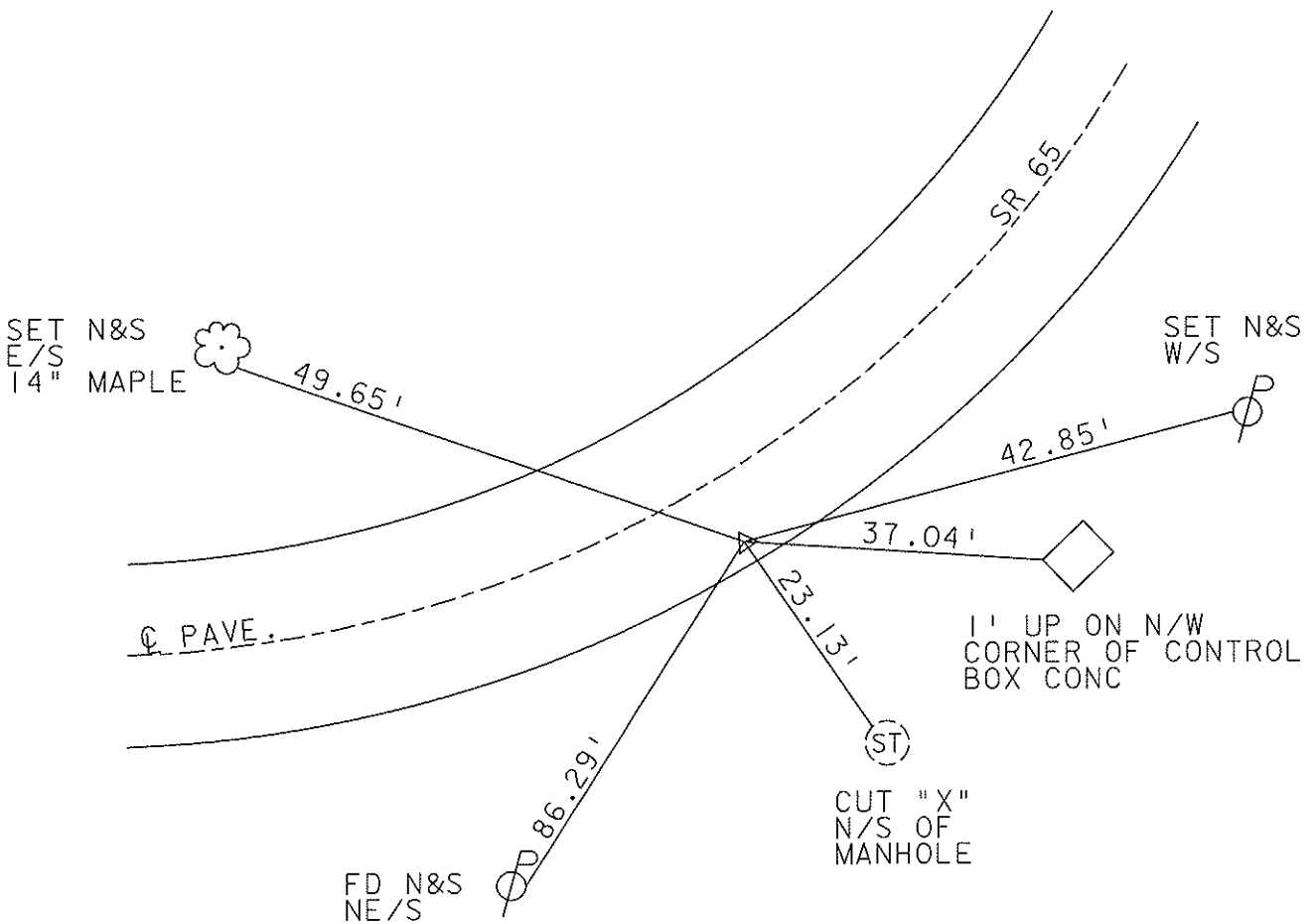
6.5' TO RT EDGE PAVEMENT

S.L.M. 1035+75



1937  $\odot$  SURVEY &  $\odot$  RW STATION=  
P.I. 31+66.4  
DELTA=9°50' LT.

SET MAG NAIL  
& WASHER  
10-28-05  
SAH



# O.D.O.T. DISTRICT 2 SURVEY OFFICE

PERSONNEL

REFERENCE NO. 30-B

SHEET      OF     

NOTES BARNHISEL

H.C. REED

DATE 5-2-88

ROUTE 65

R.C. Loehrke

WEATHER SUNNY

COUNTY WOOD

HOFFMAN

TEMP. +70°

TOWNSHIP Perryburg

SECTION RIVER TRACT 49

T. 7 N. R 11 E

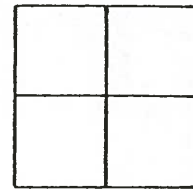
TYPE MONUMENT PI. Pt. A Lg Spk Pt. B. P.K. NAIL

ON SURFACE - BELOW 2" SURFACE

LEFT - 0 PAV'T. - RIGHT 14.2

0.7 TO LT EDGE PAVEMENT curbing

S.L.M. Pt. "A" 1035+75



Pt. A  
Pt. B

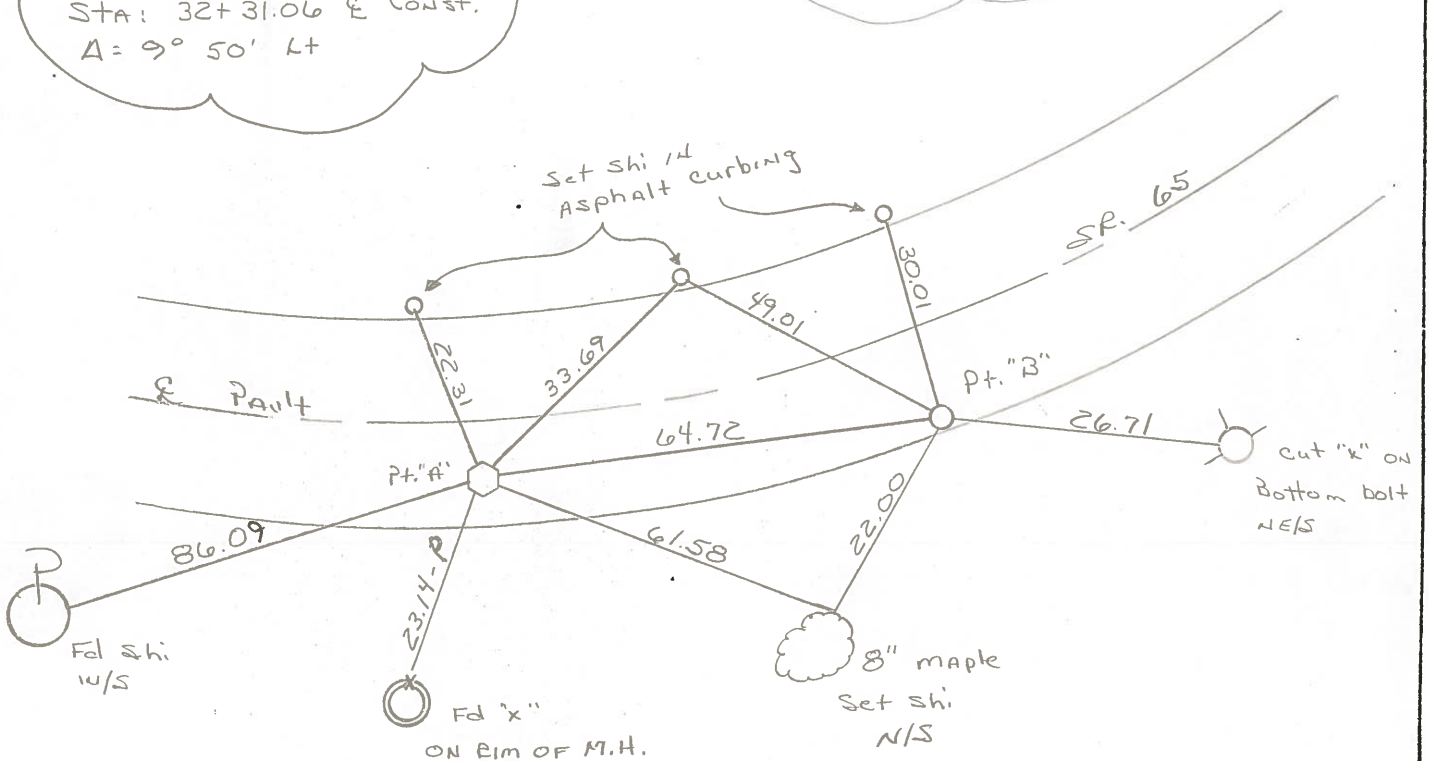
RECORD Pt. "A"

STA: 31+66.4 & Survey  
Δ = 9° 50' Lt

RECORD Pt. "B"

STA: 32+31.06 & Const.  
Δ = 9° 50' Lt

Pt. "A" Set 2m RR Spk  
Pt. "B" Set P.K. & washer  
8-26-88  
m.B.



# O.D.O.T. DISTRICT 2 SURVEY OFFICE

PERSONNEL \_\_\_\_\_

REFERENCE NO. 30-B

SHEET \_\_\_\_\_ OF \_\_\_\_\_

NOTES Hoffman

H.C. Barnhisel

DATE 4-4-85

ROUTE SR 65

R.C. Loehrkens

WEATHER P. Clear

COUNTY Wood

TEMP. 50°

TOWNSHIP Perrysburg

SECTION RIVER TRACT 69

T \_\_\_\_\_ R \_\_\_\_\_

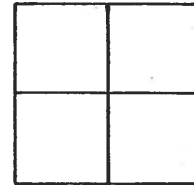
TYPE MONUMENT Small RR SPIKE

ON SURFACE - BELOW 2"

LEFT- & PAV'T. - RIGHT 6.0'

8.8' TO RT EDGE PAVEMENT

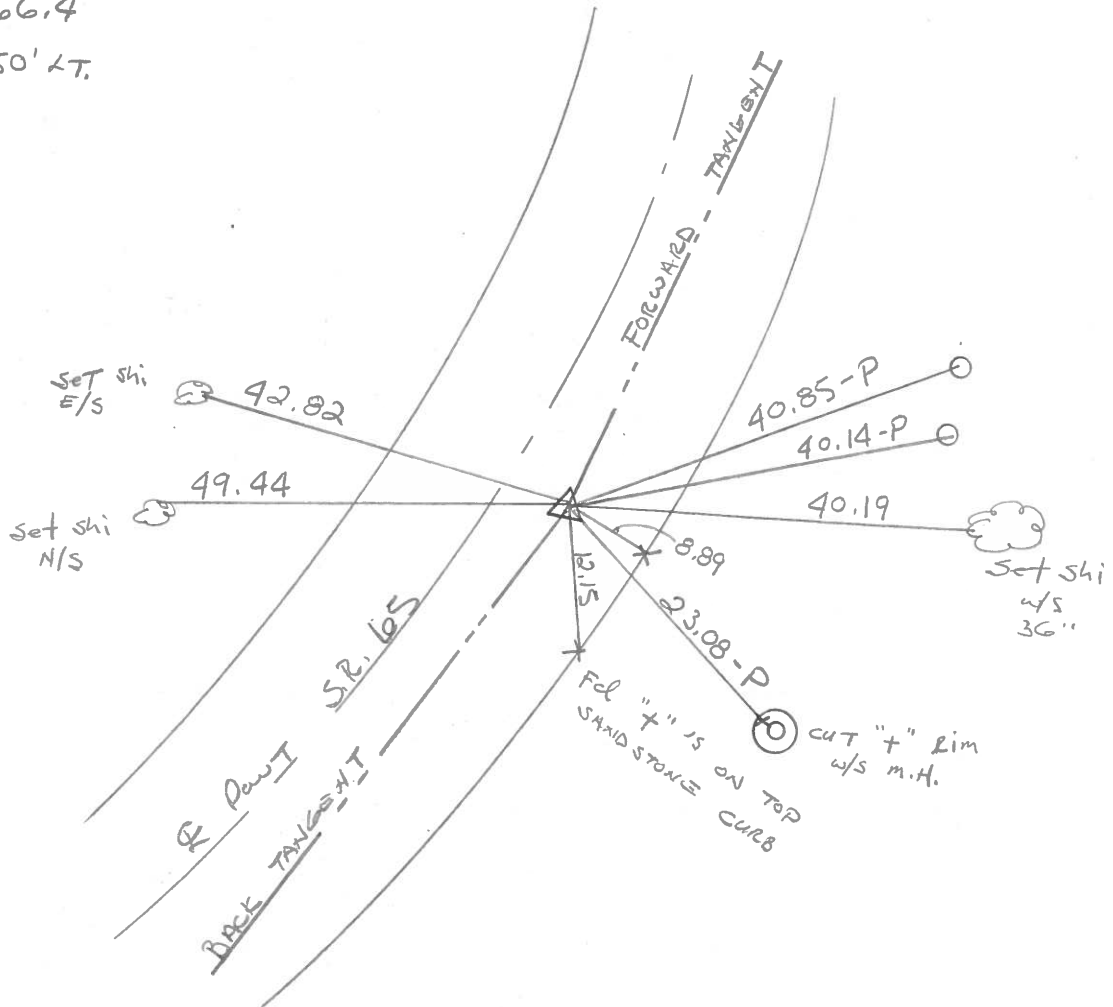
S.L.M. \_\_\_\_\_



1937 E survey & R/W station =

P.I. 31+66.4

$\Delta = 90 - 50' \text{ LT.}$



County Wood S.R. 65

Date 13 Nov. 80

Township \_\_\_\_\_

Weather Cloudy

Section \_\_\_\_\_

Temp. 40°

T    N, R    E

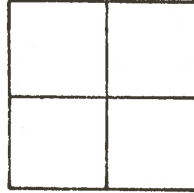
Personnel L. Stone

R. Michalak

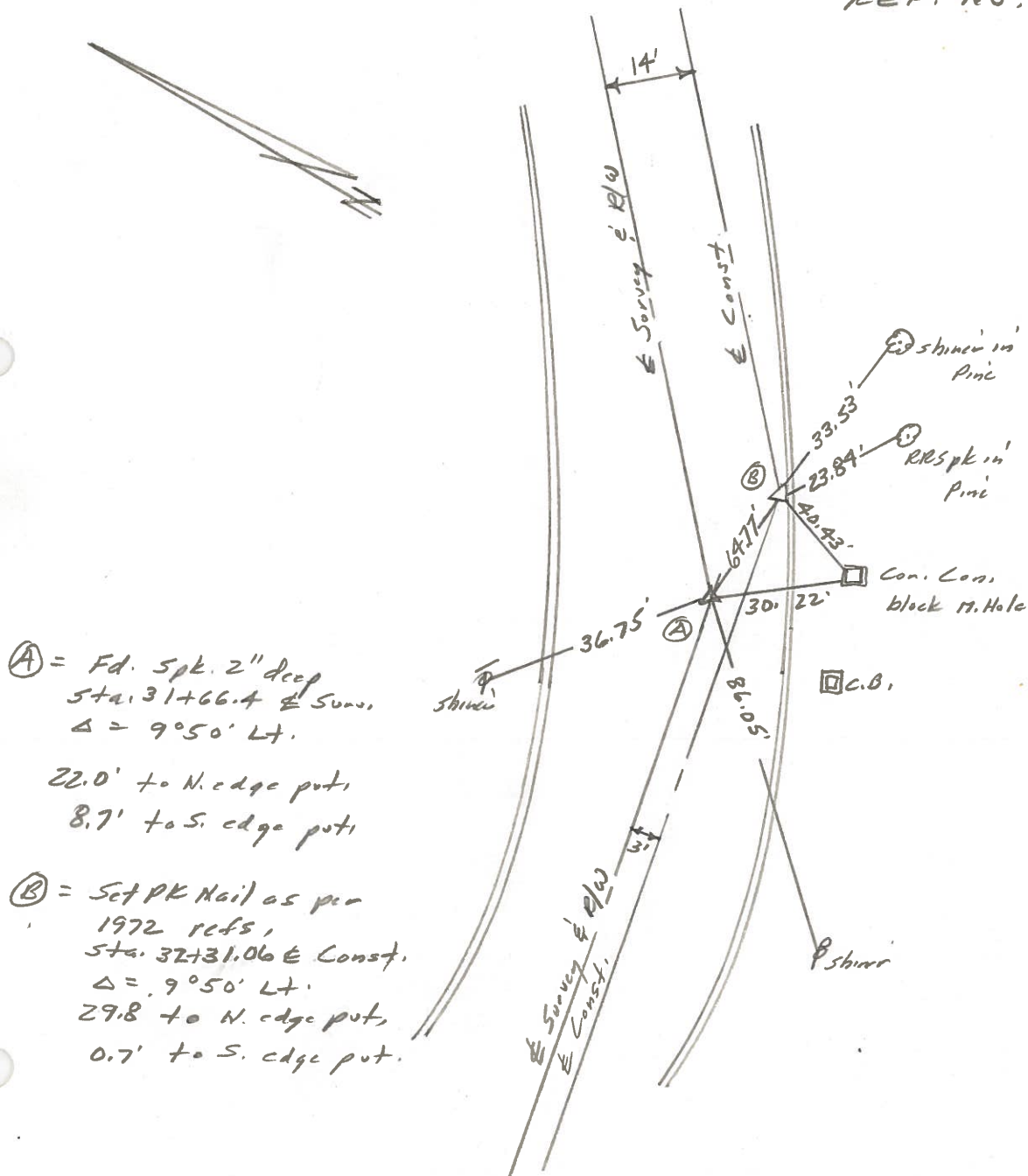
P. Neuse

D. Curtis

H. Mead



REF. NO. 30-B



Ⓐ = Fd. Spk. 2" deep  
Sta. 31+66.4 E Surv.  
Δ = 9°50' Lt.

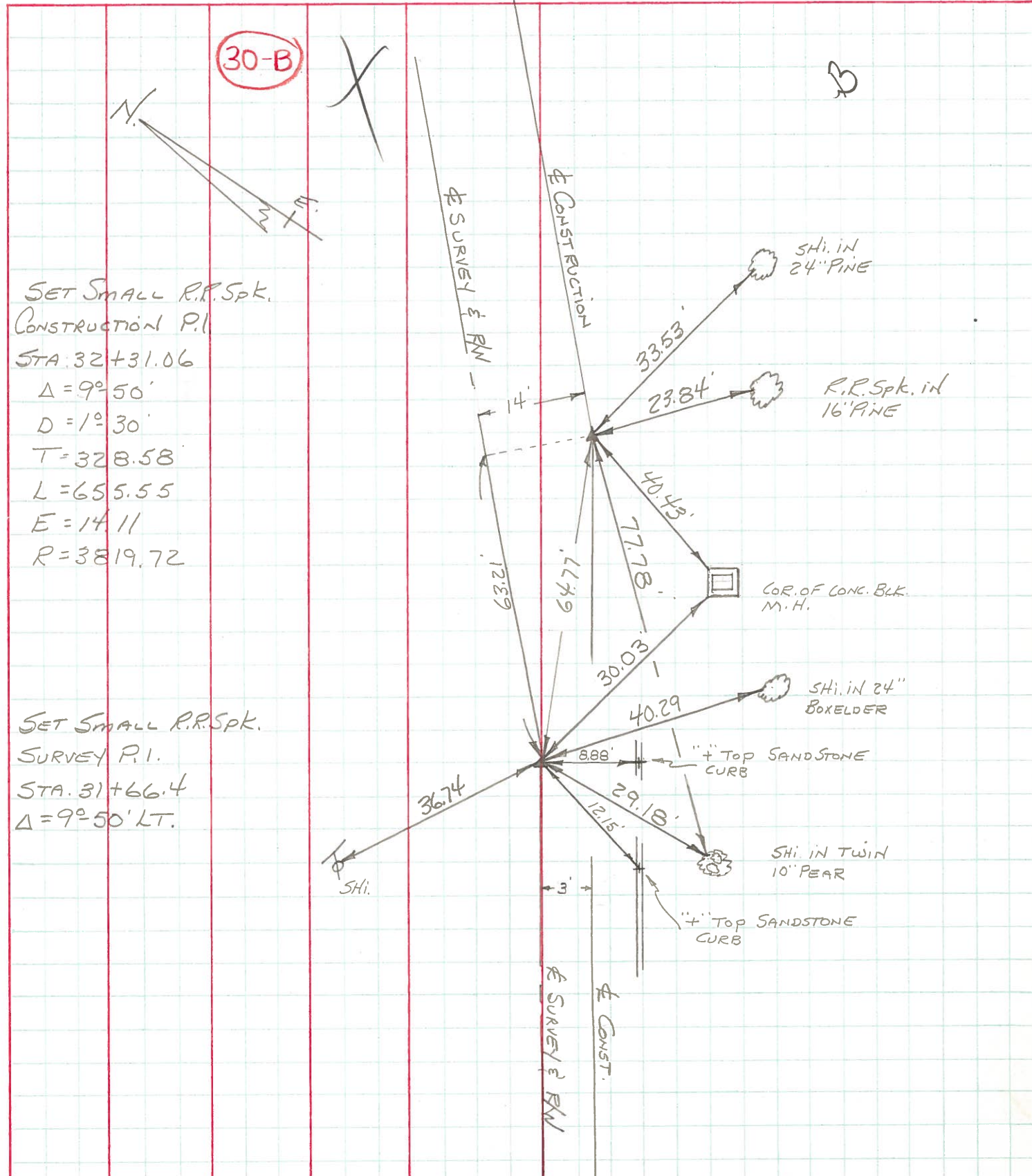
22.0' to N. edge put,  
8.7' to S. edge put

Ⓑ = Set PK Nail as per  
1972 refs,  
Sta. 32+31.06 E Const.  
Δ = 9°50' Lt.  
29.8' to N. edge put,  
0.7' to S. edge put.

PERSONNEL TITLE PERSONNEL TITLE  
BURNSIDE \_\_\_\_\_  
SMITH \_\_\_\_\_  
BOWERS \_\_\_\_\_

COUNTY Wood DATE 5-22-72  
 S. R. 65 WEATHER CLEAR  
 SEC. SEC. C (PT) TEMP. +80°

DESCRIPTION \_\_\_\_\_ PERAYS BURG TWP JOB NO. \_\_\_\_\_



PERSONNEL	TITLE	PERSONNEL	TITLE

COUNTY Wood DATE \_\_\_\_\_

S. R. #65 WEATHER \_\_\_\_\_

SEC. "C" (pt.) TEMP. \_\_\_\_\_

DESCRIPTION East boundary, Perrysburg JOB NO. \_\_\_\_\_

#	LEFT	CENTER LINE	RIGHT
<b>774</b>			
Sta. 25+94.0			
I. pin			
			Shiner in 20" Elm N. 32.1
			Shiner in 2" Elm N.E. 41.3
			Near edge of sewer M.H. S.E. 37.1

<b>775</b>			
Sta. 48+54.2			
P.I. Δ = 32° 09' R.			
			ton conc. Hdwl.
			29.6'
			31.2'
			Old stone at intersection of P.L. (E. Wenz)
			Nail in 2x2" Hub
			49.3'
			Nail in 10" Linn tree

<b>776</b>			
Sta. 40+25.7			
P.I. Δ = 26° 22' 30"			
			Shiner in 10" Linn S.W. 25.6
			Shiner in 18" Linn S.E. 66.2
			10" Box Elder E. 36.9

<b>777</b>			
Sta. 31+66.4			
P.I. Δ = 9° 47' Lt.			
			31.3' S.E.
			P.R. spk. in 30" Willow
			34.6' N.W.
			Nail in 10" maple
			43.1' S.W.
			Nail in 8" Elm